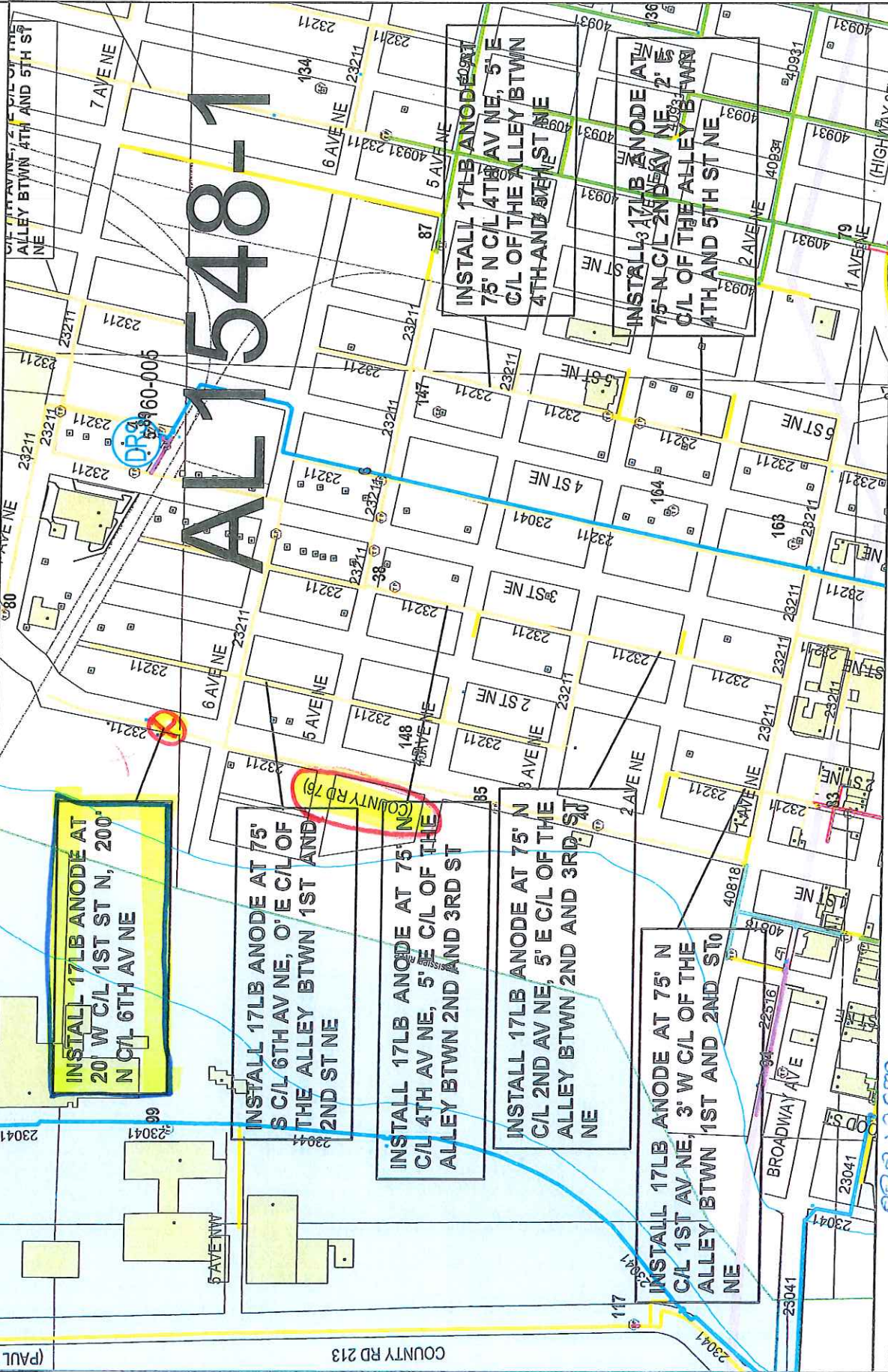




GENERAL LOCATION ONLY.
DO NOT USE TO LOCATE FOR EXCAVATION.
CALL 1-800-252-1166 FOR ONSITE LOCATIONS AND STAKING.

Scale: 1" = 457'



INSTALL 17LB ANODE AT
20' W C/L 1ST ST N, 200'
N C/L 6TH AV NE

INSTALL 17LB ANODE AT 75'
S C/L 6TH AV NE, 0'E C/L OF
THE ALLEY BTWN 1ST AND
2ND ST NE

INSTALL 17LB ANODE AT 75' N
C/L 4TH AV NE, 5'E C/L OF THE
ALLEY BTWN 2ND AND 3RD ST

INSTALL 17LB ANODE AT 75' N
C/L 2ND AV NE, 5' E C/L OF THE
ALLEY BTWN 2ND AND 3RD ST
NE

INSTALL 17LB ANODE AT 75' N
C/L 1ST AV NE, 3' W C/L OF THE
ALLEY BTWN 1ST AND 2ND ST
NE

INSTALL 17LB ANODE AT
75' N C/L 4TH AV NE, 5' E
C/L OF THE ALLEY BTWN
4TH AND 5TH ST NE

INSTALL 17LB ANODE AT
75' N C/L 2ND AV NE, 2' 5"
C/L OF THE ALLEY BTWN
4TH AND 5TH ST NE

AL1548-1

Work Order #: 88840582
Design Date: 01-04-2019
City: LITTLE FALLS
Quad/Sec/Twp/Rng: SE SEC34/T-41/R-32
CP Section #: 23211
CP Area: AL1548-1
Designed By: P TEESELINK
Designer Phone #: 612.910.1378