

PLAN SYMBOLS

| | |
|--|-------|
| STATE LINE..... | ————— |
| COUNTY LINE..... | ————— |
| TOWNSHIP OR RANGE LINE..... | ————— |
| SECTION LINE..... | ————— |
| QUARTER LINE..... | ————— |
| SECTION CORNER..... | ————— |
| RIGHT-OF-WAY LINE..... | ————— |
| TEMPORARY EASEMENT..... | ————— |
| PRESENT RIGHT-OF-WAY LINE..... | ————— |
| CONTROL OF ACCESS LINE..... | ————— |
| PROPERTY LINE(CEPT LAND LINES)..... | ————— |
| VACATED PLATED PROPERTY..... | ————— |
| CORPORATE OR CITY LIMITS..... | ————— |
| ROADWAY CENTERLINE..... | ————— |
| RETAINING WALL..... | ————— |
| RAILROAD..... | ————— |
| RAILROAD RIGHT-OF-WAY LINE..... | ————— |
| RIVER OR CREEK..... | ————— |
| DRY RILL..... | ————— |
| ORANGE DITCH..... | ————— |
| DRAIN TILE..... | ————— |
| CULVERT..... | ————— |
| DROP INLET..... | ————— |
| GUARD RAIL..... | ————— |
| BARBED WIRE FENCE..... | ————— |
| WOOLEN WIRE FENCE..... | ————— |
| CHAIN LINK FENCE..... | ————— |
| RAILROAD SNOW FENCE..... | ————— |
| STONE WALL OR FENCE..... | ————— |
| HERD..... | ————— |
| RAILROAD CROSSING SIGNAL..... | ————— |
| CROSSING GATE..... | ————— |
| UTILITY CORNER..... | ————— |
| SPRINGS..... | ————— |
| WELLS..... | ————— |
| THRESH..... | ————— |
| ORCHARD..... | ————— |
| HONEYBEE..... | ————— |
| BRIDGE..... | ————— |
| BUILDING(ONE STORY FRAMED)..... | ————— |
| F-FRAME C-CONCRETE..... | ————— |
| B-BRICK S-S-TUCCO..... | ————— |
| IRON PIPE OR ROD..... | ————— |
| NON-REINFORCED CONCRETE, OR METAL..... | ————— |
| WOODEN SIGN..... | ————— |
| GRAVEL PIT..... | ————— |
| SAND PIT..... | ————— |
| BORROW PIT..... | ————— |
| ROCK QUARRY..... | ————— |

UTILITIES SYMBOLS

| | |
|--|-------|
| POWER POLE LINE..... | ————— |
| TELEPHONE OR TELEGRAPH POLE LINE..... | ————— |
| POLE LINE AND POWER OR TELEPHONE POLES ON TELEPHONE POLES..... | ————— |
| ANCHOR..... | ————— |
| STEEL TOWER..... | ————— |
| STREET LIGHT..... | ————— |
| PEDestal(TELEPHONE CABLE TERMINAL)..... | ————— |
| Gas MAIN..... | ————— |

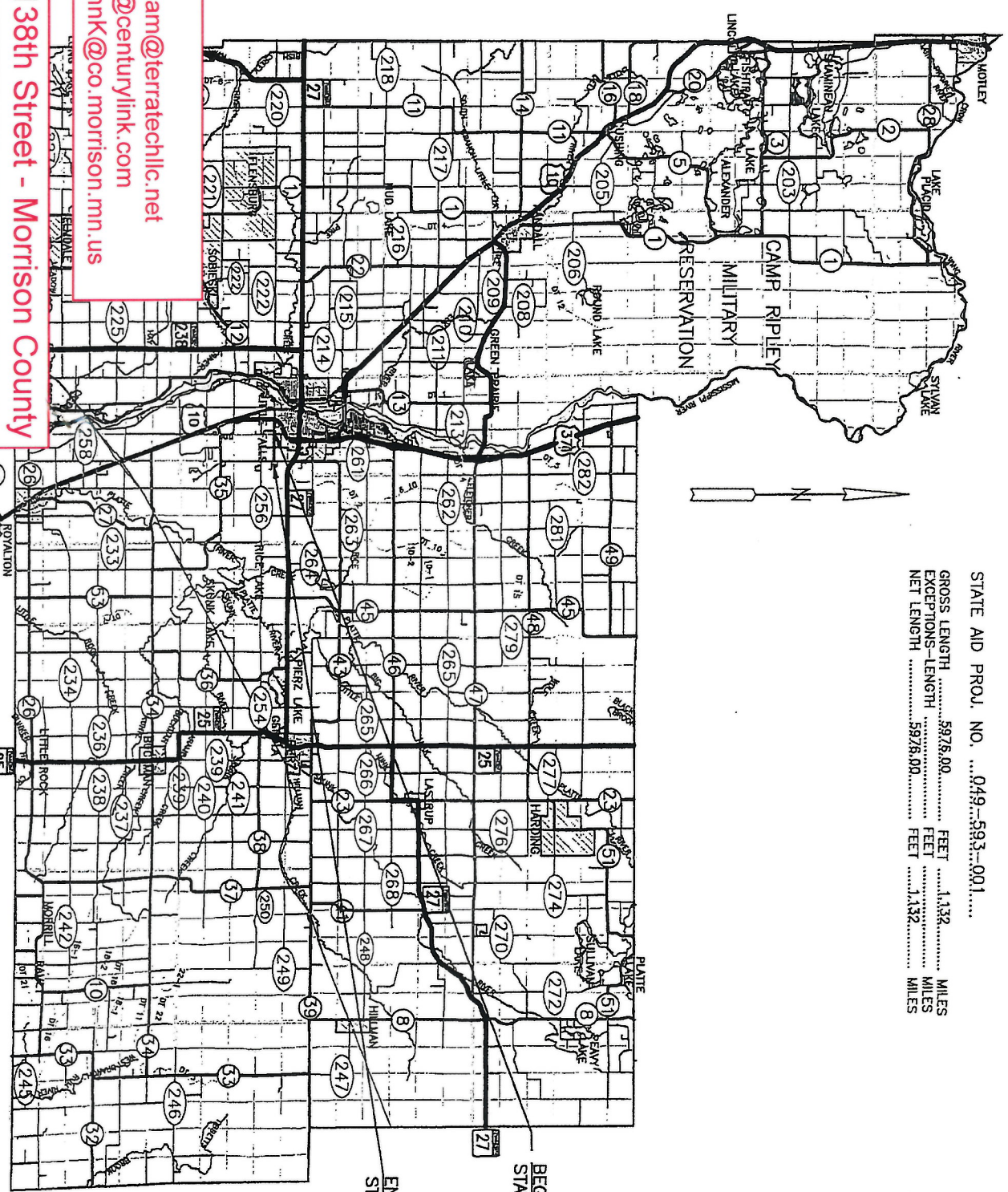
MINNESOTA DEPARTMENT OF TRANSPORTATION

MORRISON COUNTY

CONSTRUCTION PLAN FOR GRADING, AGGREGATE BASE, BITUMINOUS SURFACE, & AGGREGATE SHOULDERING.....

LOCATED ON .138TH STREET BETWEEN CR. 257 AND CR. 258 (0.5 MILE SE. OF LITTLE FALLS) (Geographic Description)
 FROM 609' WEST OF THE WEST QUARTER CORNER OF SEC. 16, T40N, R32W (Legal Description)
 TO THE EAST QUARTER CORNER OF SEC. 16, T40N, R32W (Legal Description)

| | |
|---|--|
| STATE AID PROJ. NO.049-593-001..... | |
| GROSS LENGTH5928.00..... FEET1.332..... MILES | |
| EXCEPTIONS-LENGTH FEET MILES | |
| NET LENGTH5928.00..... FEET1.332..... MILES | |



BEGIN SAP 049-593-001
STATION 19+77.00

END SAP 049-593-001
STATION 79+53.00

MINN. PROJ. NO.
 GOVERNING SPECIFICATIONS
 THE 2018 EDITION OF THE MINNESOTA DEPARTMENT OF TRANSPORTATION "STANDARD SPECIFICATIONS FOR CONSTRUCTION" SHALL GOVERN.

The subsurface utility information in this plan is utility quality level D. This quality level was determined according to the guidelines of C/A/SCE 38-02, entitled "Standard Guidelines for the Collection and Depiction of Existing Subsurface Utility Data."

INDEX

| | |
|------------------|---------------------------------------|
| SHEET NO. 1 | TITLE SHEET |
| SHEET NO. 2 | ESTIMATED QUANTITIES & NOTES |
| SHEET NO. 3 | TYPICAL SECTIONS |
| SHEET NO. 4 | CHART, STD. PLATES, & BASIS OF QUANT. |
| SHEET NO. 5 | EARTHWORK, SURFACING, SEEDING CHARTS |
| SHEET NO. 6 | SEDIMENT CONTROL DETAILS |
| SHEET NO. 7-9 | PLAN & PROFILE |
| SHEET NO. 10-12 | SWPPP NARRATIVE & PLAN SHEETS |
| SHEET NO. 13-14 | TRAFFIC CONTROL |
| SHEET NO. X1-X11 | CROSS-SECTIONS |

THIS PLAN CONTAINS 25 SHEETS
 DESIGN DESIGNATION
 RURAL RECONSTRUCTION
 STA 19+77 TO 79+53

ADT (2019) = .330.....
 Proj. ADT (2039) = 363.....
 Proj. HCADT (2038) = 32.....
 DN18109,000.....
 R VALUE .30.....
 10 TON DESIGN
 Functional Class RURAL, MINOR/URBAN, COLLECTOR,
 2 TRAFFIC LANES - 12' PER LANE
 Shoulder Width .5' PAVED & 1' AGG.....
 Design Speed .55... MPH
 Based on Stopping Sight Distance
 Height of eye 3.5' Height of Object 2.0'

GEODETIC INFORMATION
 NGS NAME 4901 K1
 MAD83(2011) GEODETIC POSITION
 MORRISON COUNTY COORDINATES X 482365.230 Y 168802.116
 NAVD83 ORTHOMETRIC HEIGHT
 ELEVATION= 1127.85

REVISED BY _____ DATE _____
 I HEREBY CERTIFY THAT THIS PLAN, SPECIFICATION, OR REPORT WAS PREPARED BY ME OR UNDER MY DIRECT SUPERVISION AND THAT I AM A DULY LICENSED PROFESSIONAL ENGINEER UNDER THE LAWS OF THE STATE OF MINNESOTA
STEVEN C. BACKOWSKI LICENSE NO 18286 DATE 9/23/18
 COUNTY ENGINEER

District State Aid Engineer/Reviewed for Compliance with State-Aid Rules/Policy
John Gacke DATE 8/30/18
 For State Aid Engineer: Approved for State Aid Funding

STATE AID PROJ. NO.049-593-001..... SHEET NO. 1..... OF .25..... SHEETS

Contacts:
 TT - Lindsey Kirkham 612.867.1145 lkirkham@terratechllc.net
 CTL - Bill Gacke 320.255.8202 bill.gacke@centurylink.com
 Project - John Kostreba 320.631.2865 JohnK@co.morrison.mn.us

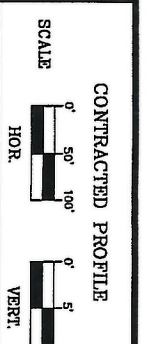
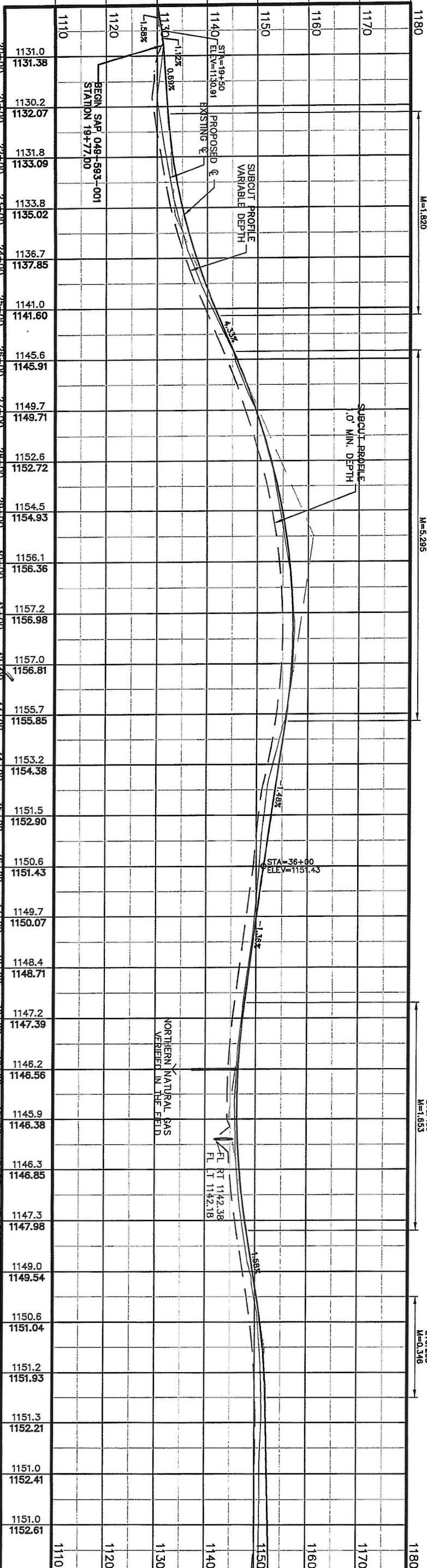
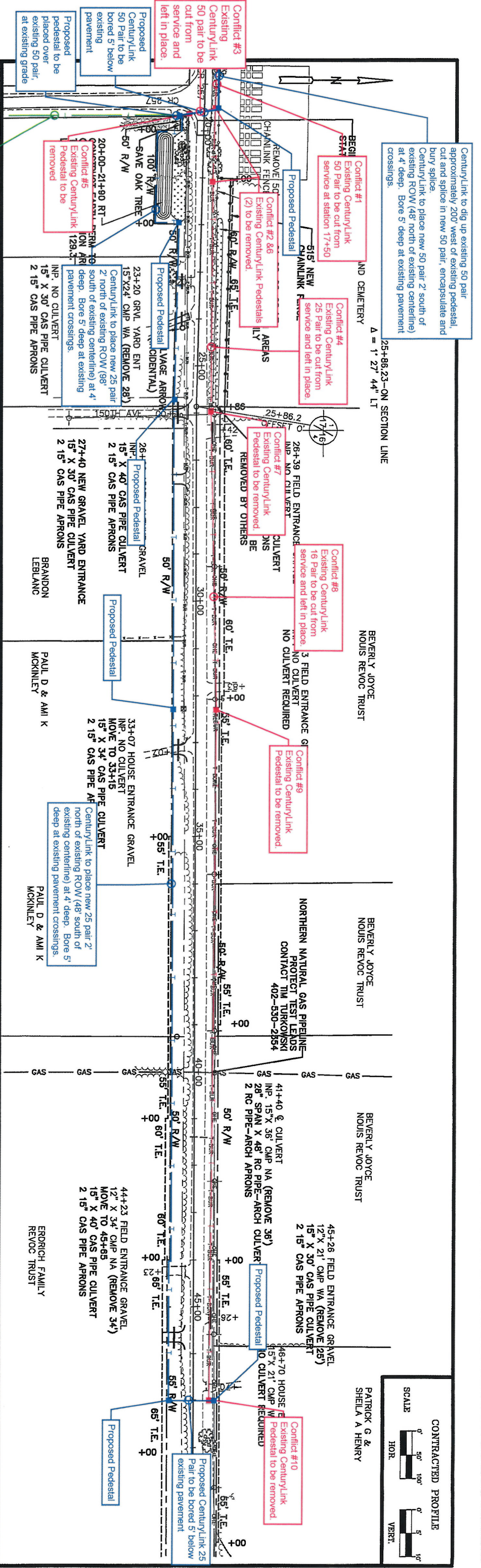
CL19.80110_SP 049-593-001 138th Street - Morrison County

CenturyLink Markups

Wire Center: Little Falls (LTFMLNLF)
 County: Morrison Zip Code: 56345

CenturyLink facilities are approximate
 only and have not been potholed.
 FOR REFERENCE ONLY

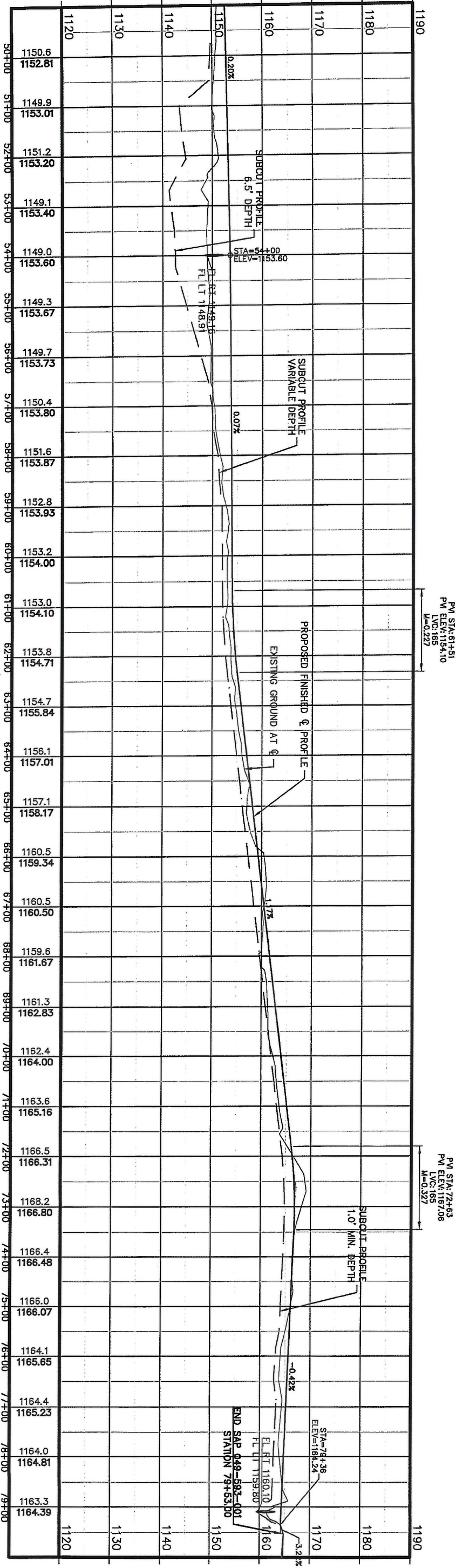
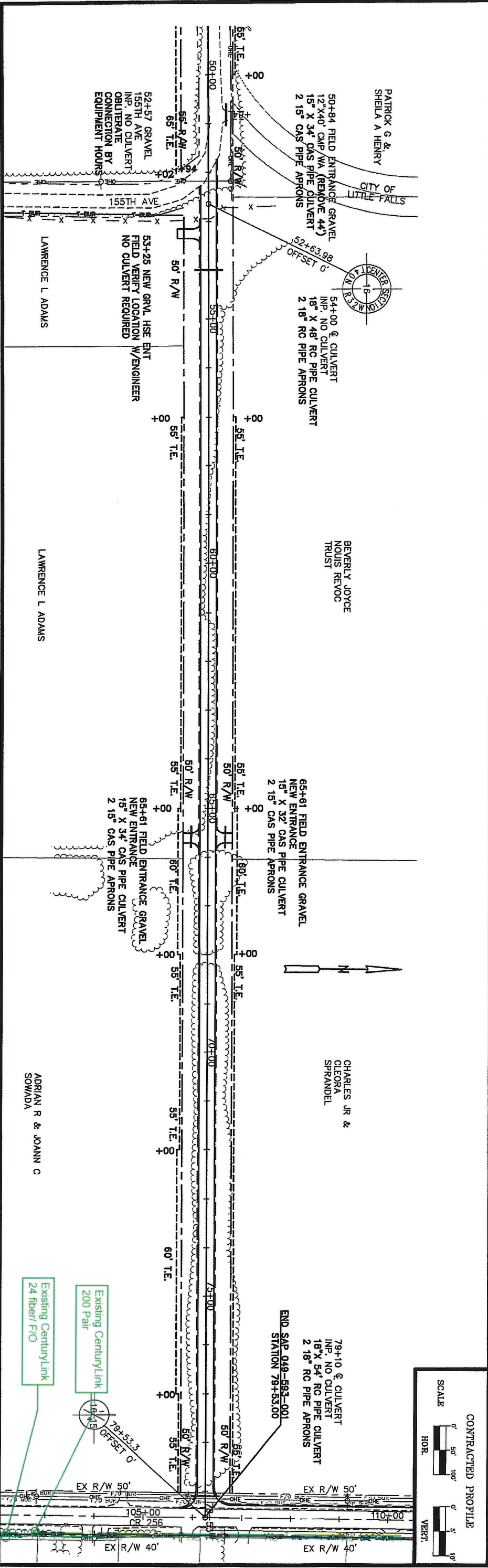
NLS22466



LICENSED PROFESSIONAL ENGINEER

 DATE 3/1/19 LICENSE NO. 18286

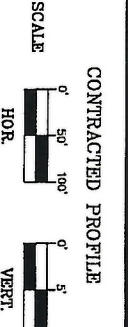
PLAN & PROFILE
 STATE AID PROJ NO. 049-593-001 SHEET NO. 7 OF 25 SHEETS



F.C.B.

LICENSED PROFESSIONAL ENGINEER
DATE 3/11/19 LICENSE NO. 18286

STATE AID PROJ NO. ...049-593-001... SHEET NO. ...8... OF .25... SHEETS



PLAN & PROFILE