



Overview



Legend

- Road Centerlines
- Streams**
- <all other values>
- Protected Stream
- Protected Stream/County Ditch
- Original Path
- County Ditch

This imagery is displayed at a scale of 1 inch=9 inch pixel resolution, (9 inches on the ground is 1 pixel on your screen). In the areas of Pierz and the NW/NE lakes, the image is 1 inch=3 inch pixel resolution and is the highest quality imagery on this site. These images were flown by Pictometry in the spring of 2017 for the 9", and fall of 2017 for the 3".

Date created: 5/8/2019
 Last Data Uploaded: 5/8/2019 3:02:42 AM

Developed by  **Schneider**
 GEOSPATIAL

PI 0+00

POT 4+64.2

PI 16+64.8
Δ=0°26'LT

0+44.2
INP 15"X38' CMC @ 2 APRONS REMOVE
F&I 15"X48' CMC
F&I 2 APRONS

8+95 FE ENT
NO CULV INP
F&I 15"X22' SCP CLASS IV
F&I 2 APRONS

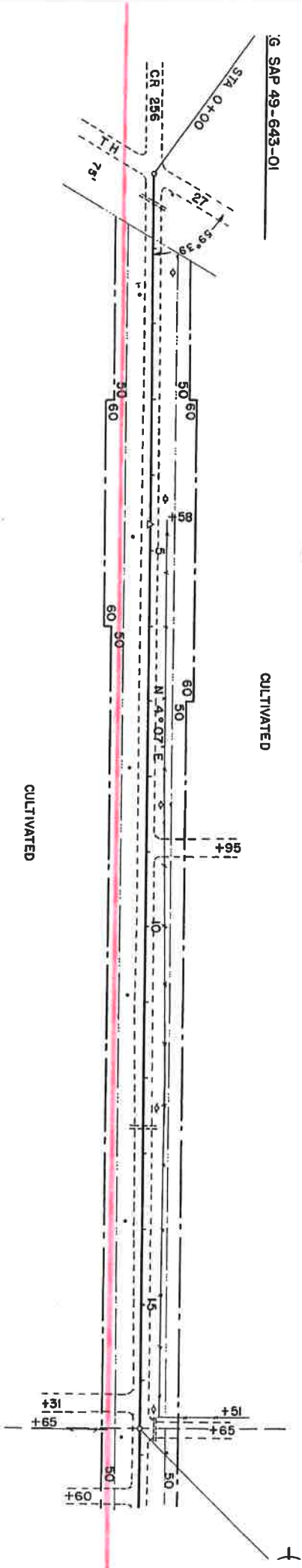
12+66.2
INP 12"X14' CMC REMOVE
F&I 18"X40' SCP CLASS III
F&I 2 APRONS

16+65 FM ENT
INP 12"X18' CMC REMOVE
F&I 15"X22' SCP CLASS
F&I 2 APRONS

G SAP 49-643-01



CULTIVATED



Proposed Route

16+31 FE ENT
NO CULV INP
F&I 15"X22' SCP CLASS III
F&I 2 APRONS

POT 46+75.3



P1 64+44.8
Δ 0° 0' RT

57A 49+00 C
INP 15" X 38" SCP REMOVE
F 8.1 24" X 56" SCP CLASS III
F 8.1 2 APRONS

53+38 FE ENT
NO CULV INP
F 8.1 18" X 22" SCP CLASS
F 8.1 2 APRONS

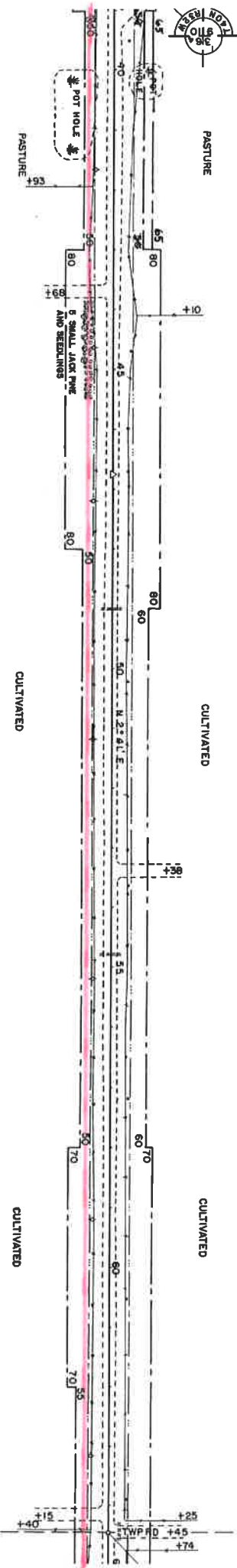
54+80 C
INP 15" X 28" SCP REMOVE
F 8.1 18" X 48" SCP STA 54+00
F 8.1 2 APRONS

CLASS III

64+45 TYP RD
INP 15" X 24" CMC
F 8.1 15" X 28" SC
F 8.1 2 APRONS

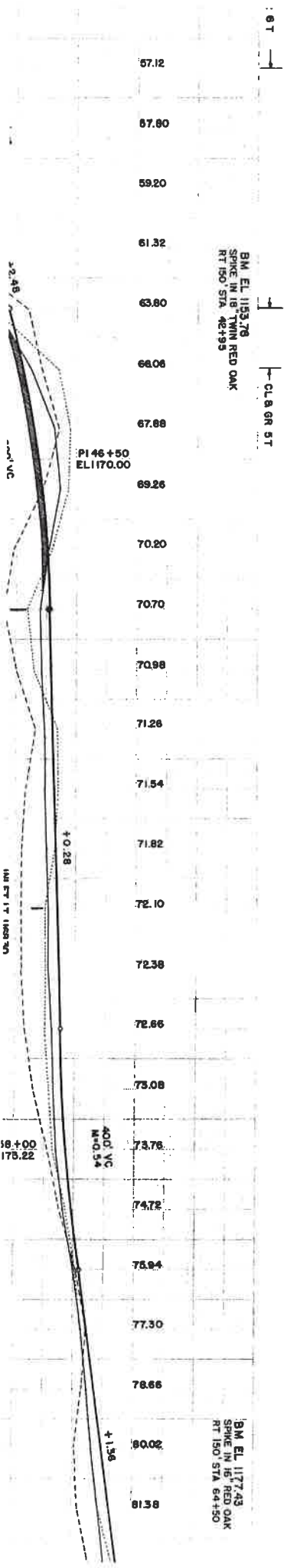
43+68 FE ENT
NO CULV INP
F 8.1 15" X 22" SCP CLASS III
F 8.1 2 APRONS

64+15 FE ENT
NO CULV INP
F 8.1 15" X 22" SCP CL
F 8.1 2 APRONS



BM. EL. 1153.78
SPIKE IN 18" TWIN RED OAK
RT 150 STA 42+93

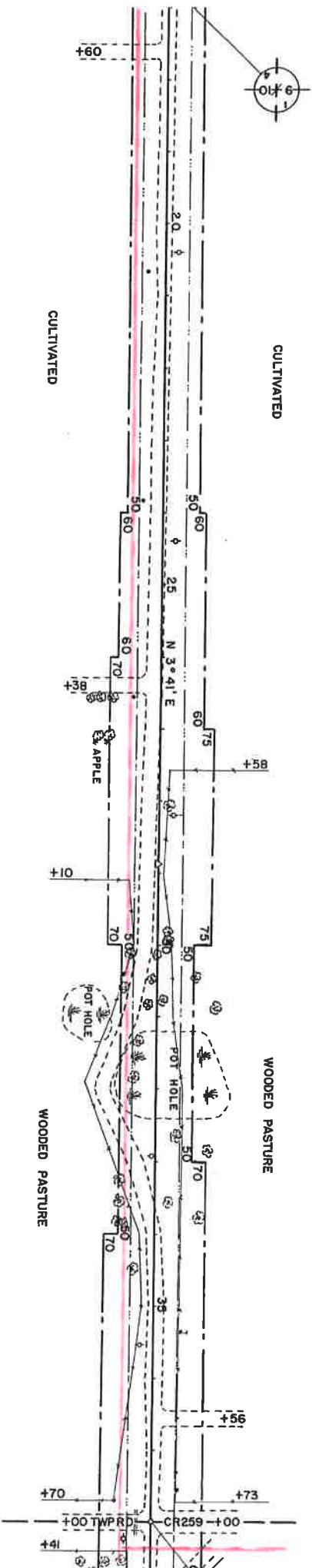
BM. EL. 1177.43
SPIKE IN 15" RED OAK
RT 150 STA 64+50



Proposed Route

POT 28+871

PI 38+00
A=1'00' LT



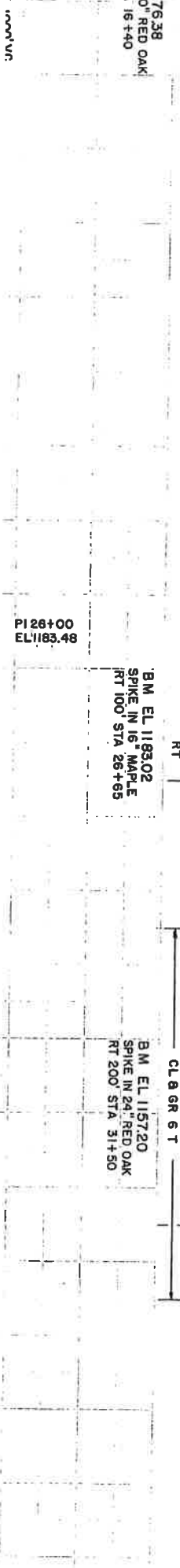
60 FE ENT
 CULV INP
 F 8 1 15" X 22' SCP CLASS III
 F 8 1 2 APRONS

26+38 FM ENT
 NO CULV INP
 F 8 1 15" X 22' SCP CLASS III
 F 8 1 2 APRONS

38+00 TWP RD
 INP 15" X 30' CMC REMOVE
 F 8 1 15" X 28' SCP CL/
 F 8 1 2 APRONS

36+56 FE ENT
 NO CULV INP
 F 8 1 15" X 22' SCP CLASS III
 F 8 1 2 APRONS

EL 1176.38
 IN 10" RED OAK
 STA 16+40



BM EL 1183.02
 SPIKE IN 16" MAPLE
 RT 100' STA 26+65

BM EL 1157.20
 SPIKE IN 24" RED OAK
 RT 200' STA 31+50

Proposed Route