



Overview



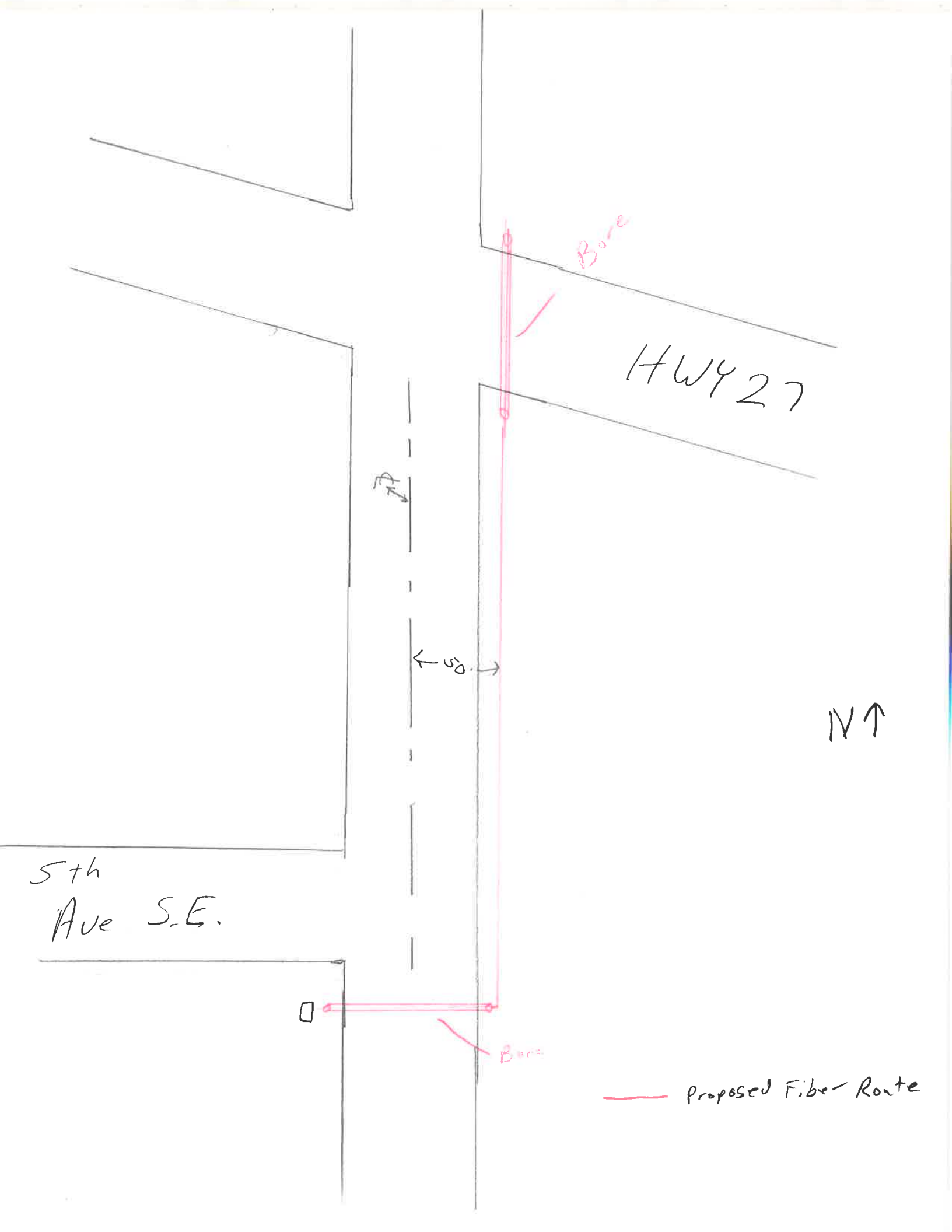
Legend

- Road Centerlines
- Streams**
- <all other values>
- Protected Stream
- ▬ Protected Stream/County Ditch
- ▬ Original Path
- ▬ County Ditch

This imagery is displayed at a scale of 1 inch=9 inch pixel resolution, (9 inches on the ground is 1 pixel on your screen). In the areas of Pierz and the NW/NE lakes, the image is 1 inch=3 inch pixel resolution and is the highest quality imagery on this site. These images were flown by Pictometry in the spring of 2017 for the 9", and fall of 2017 for the 3".

Date created: 5/16/2019
 Last Data Uploaded: 5/16/2019 2:56:38 AM

Developed by Schneider GEOSPATIAL



5th
Ave S.E.

HWY 27

N ↑

Bore

Bore

— Proposed Fiber Route

0.5

↑