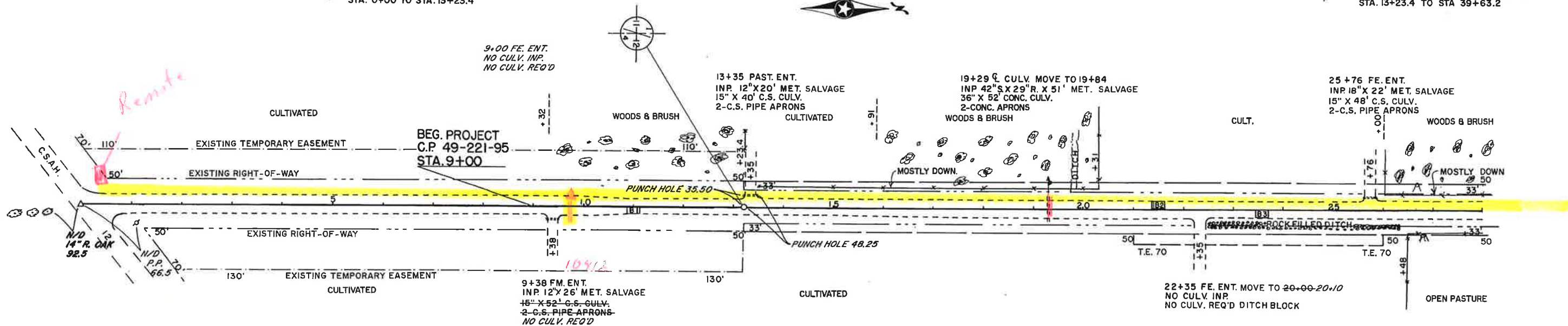


ROT. = 0+00

P.I. = 13+23.4
A = 0° 18' LT

WILLIAM A. JR. & COREEN LEHRKE
STA. 0+00 TO STA. 13+23.4

DEPENDENCES. & JANICE L. LITTLEFIELD
STA. 13+23.4 TO STA. 39+63.2



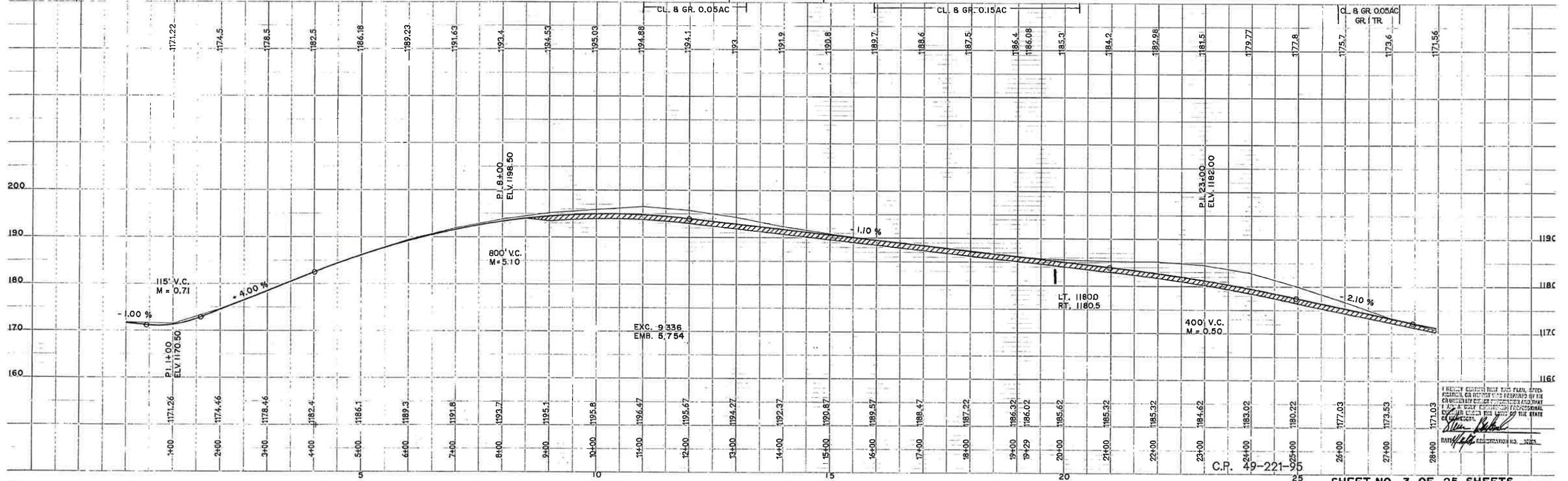
Proposed Route
ped
Bore

AS-BUILT 97

BRUCE L. & AMY M. OLESON
STA. 0+00 TO STA. 39+63.2

CSAH-12
B.M. ELV. 1168.26
SPK. IN 14" R. OAK
STA. 275+25 RT. 62'

B.M. ELV. 1191.77
SPK. IN 8" W. OAK
STA. 13+04 LT. 108'



I HEREBY CERTIFY THAT THIS PLAN, SPECIFICATIONS, AND REPORT WERE PREPARED BY ME OR UNDER MY DIRECT SUPERVISION AND THAT I AM A duly licensed PROFESSIONAL ENGINEER IN THE STATE OF CALIFORNIA.
Alan K. [Signature]
DATE: 1/15/03

DEPENDENCE S. & JANICE L. LITTLEFIELD
STA. 13+23.4 TO STA. 39+63.2

34+22 CULV.
INP. 24" X 42' MET. SALVAGE
24" X 74' CONC. CULV.
2 CONC. APRONS
3.5 CU. YDS. RIPRAP CLASS II
.45

31+34 CULV
INP. 24" X 56' MET. SALVAGE
24" X 72' CONC. CULV.
2 CONC. APRONS

39+00 PAST ENT. 38+60
15" X 48 C.S. CULV.
2 C.S. PIPE APRONS

P.I. 39+63.2
Δ = 0°29'45" LT.

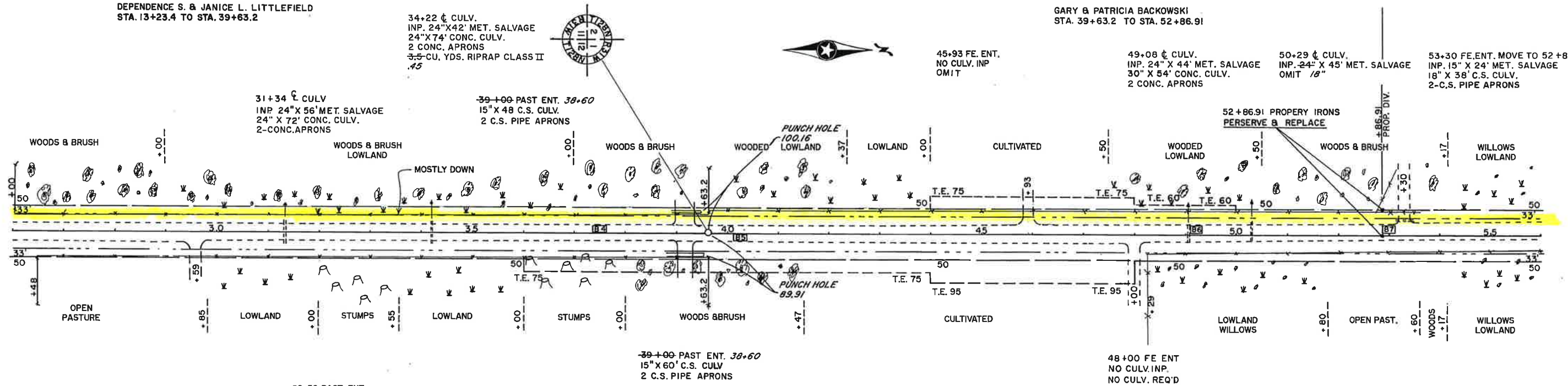
GARY & PATRICIA BACKOWSKI
STA. 39+63.2 TO STA. 52+86.91

45+93 FE. ENT.
NO CULV. INP
OMIT

49+08 CULV.
INP. 24" X 44' MET. SALVAGE
30" X 54' CONC. CULV.
2 CONC. APRONS

50+29 CULV.
INP. 24" X 45' MET. SALVAGE
OMIT 18"

53+30 FE. ENT. MOVE TO 52+87
INP. 15" X 24' MET. SALVAGE
18" X 36' C.S. CULV.
2-C.S. PIPE APRONS



BRUCE L. & AMY M. OLESON
STA. 0+00 TO STA. 39+63.2

29+59 PAST ENT.
NO CULV. INP.
15" X 30' C.S. CULV.
2-C.S. PIPE APRONS

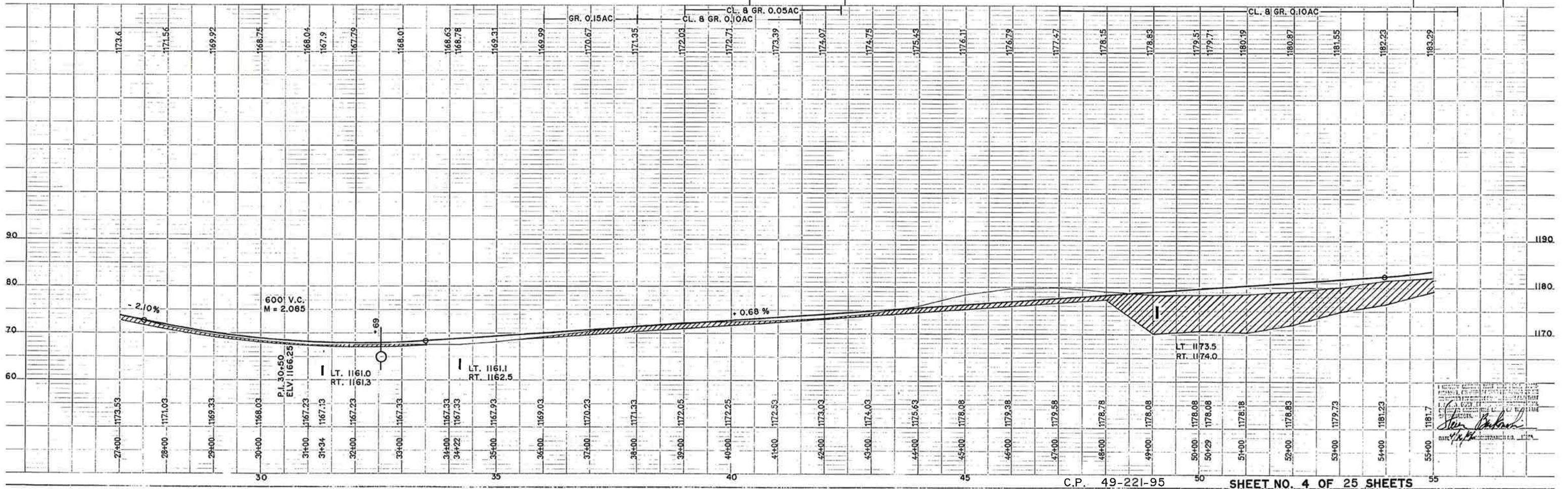
39+00 PAST ENT. 38+60
15" X 60' C.S. CULV.
2 C.S. PIPE APRONS

WAYNE H. OLSON
STA. 39+63.2 TO STA. 66+10.61

AS-BUILT 97

B.M. ELV. 1175.97
SPK. IN 12" W. OAK
STA. 40+60 RT. 85'

B.M. ELV. 1180.54
SPK. IN 14" W. OAK
STA. 54+83 RT. 154'



C.P. 49-221-95

SHEET NO. 4 OF 25 SHEETS

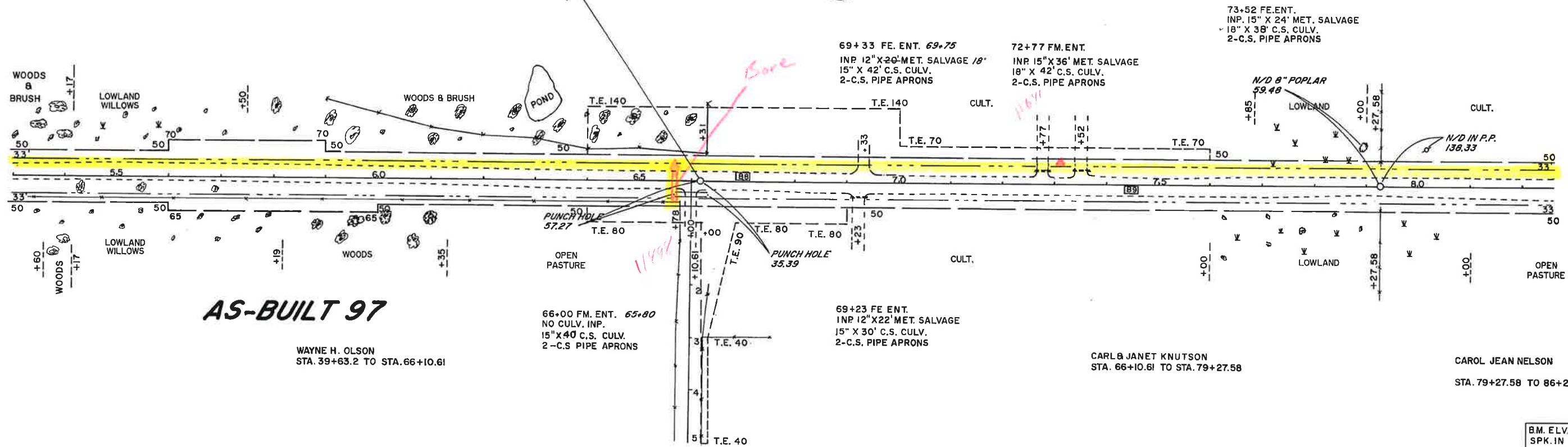
DATE: 7/1/95
DRAWN BY: [Signature]
CHECKED BY: [Signature]

P.I. 66+10.61
 $\Delta = 0^\circ 21' 05''$ RT.

P.I. 79+27.58
 $\Delta = 01^\circ 31' 50''$ LT.

ALBERT P. & KAREN PAGANETTI
 STA. 52+86.91 TO STA. 79+27.58

KENNETH G. & JACKQUELYN S. KUHL
 STA. 79+27.58 TO STA. 92+49.86



AS-BUILT 97

WAYNE H. OLSON
 STA. 39+63.2 TO STA. 66+10.61

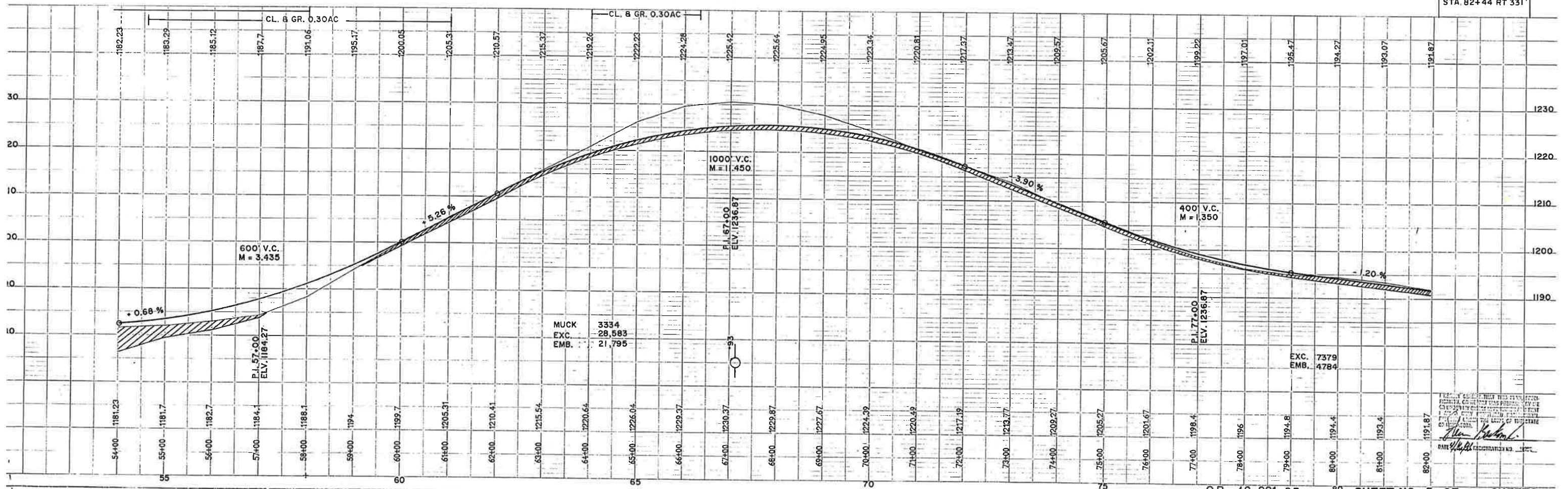
66+00 FM. ENT. 65+80
 NO CULV. INP.
 15" X 40' C.S. CULV.
 2-C.S. PIPE APRONS

69+23 FE ENT.
 INP 12" X 22' MET. SALVAGE
 15" X 30' C.S. CULV.
 2-C.S. PIPE APRONS

CARL & JANET KNUXTON
 STA. 66+10.61 TO STA. 79+27.58

CAROL JEAN NELSON
 STA. 79+27.58 TO 86+23.53

B.M. ELV. 1190.05
 SPK. IN 16" W OAK
 STA. 82+44 RT 331'



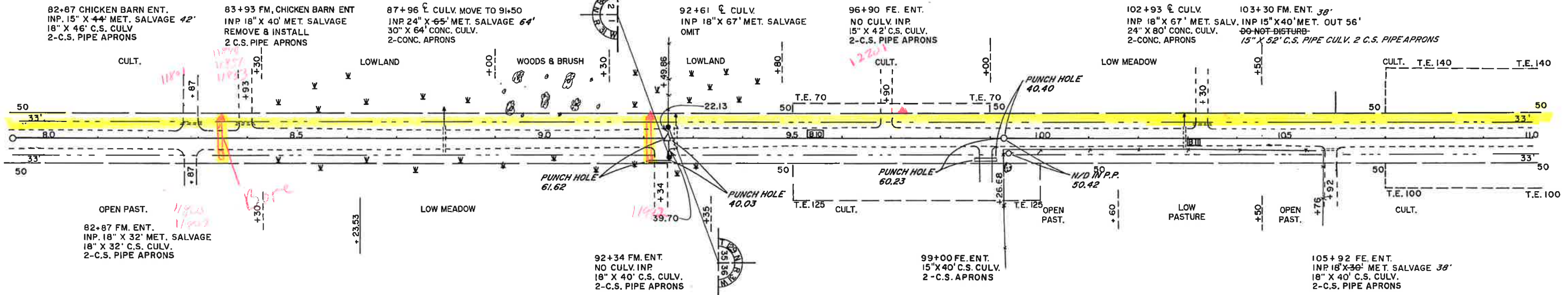
P.I. 79 + 27.58
Δ = 01° 31' 50" LT.

P.O.T. 92 + 49.86

P.I. 99 + 26.68
Δ = 1° 39' 20" RT.

KENNETH G. JACKQUELYN S. KUHL
STA. 79+27.58 TO STA. 92+49.86

GERALD P. & YVONNE E. HARPER
STA 92+49.86 TO STA. 105+76



CAROL JEAN NELSON
STA. 79+27.58 TO STA. 86+23.53

ROBERT L. JR. & SANDRA L. LORENZ
STA. 86+23.53 TO STA. 92+49.86

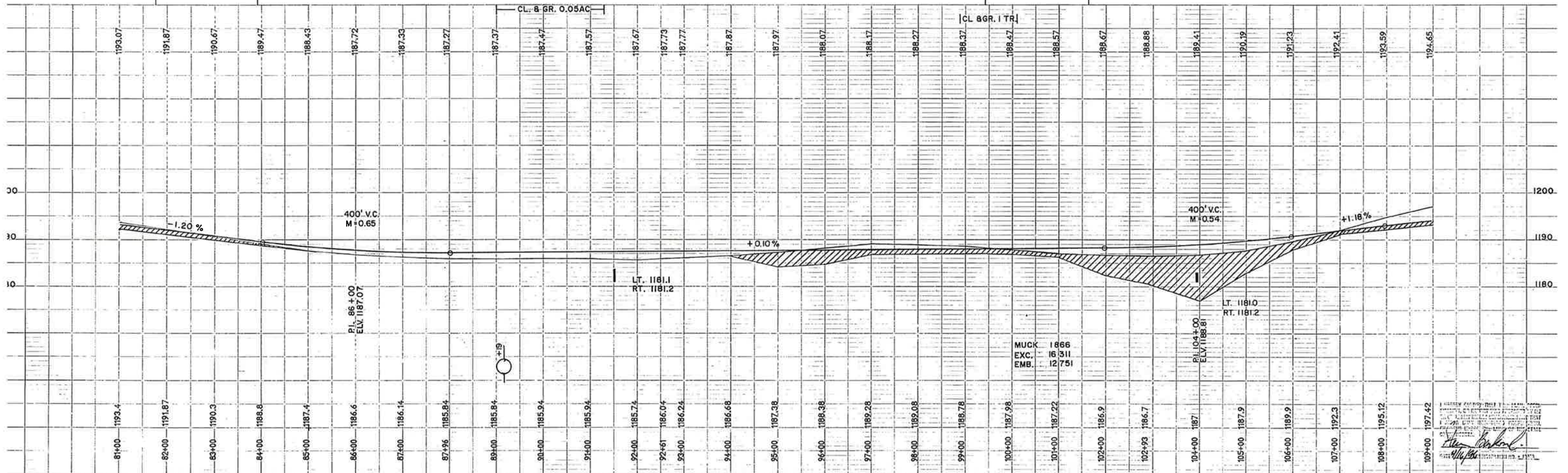
ALVIN R. & PATRICIA A. SOBANIA
STA. 92+49.86 TO STA. 105+76

ROBERT L. JR. & SANDRA L. LORENZ
STA. 105+76 TO STA. 118+84.44

AS-BUILT 97

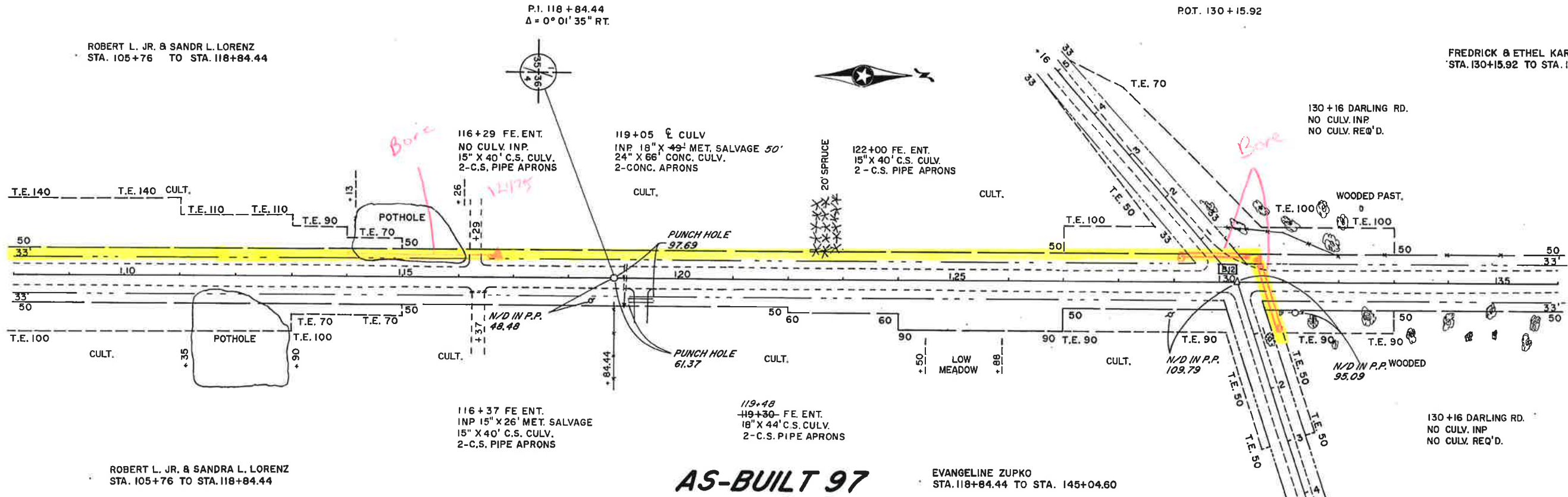
B.M. ELV. 1199.05
SPK. IN 16" W. OAK
STA. 82+44 RT. 331'

B.M. ELV. 1186.27
SPK. IN 30" W. OAK
STA. 100+00 RT. 106'



ROBERT L. JR. & SANDR L. LORENZ
STA. 105+76 TO STA. 118+84.44

FREDRICK & ETHEL KARPINSKI
STA. 130+15.92 TO STA. 138+47

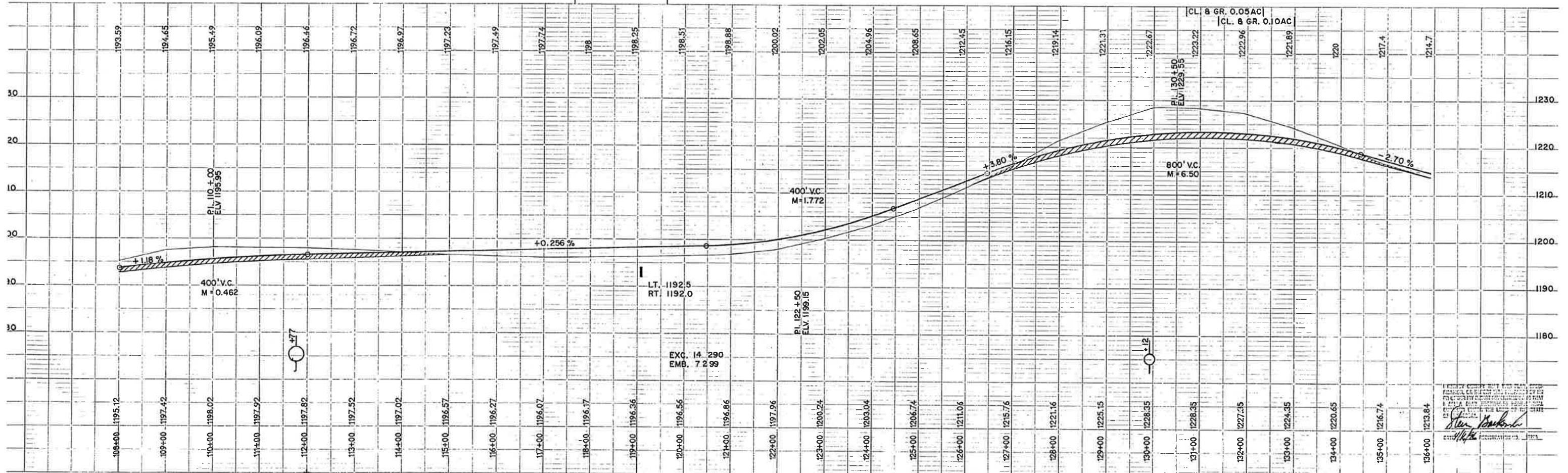


ROBERT L. JR. & SANDR L. LORENZ
STA. 105+76 TO STA. 118+84.44

AS-BUILT 97

EVANGELINE ZUPKO
STA. 118+84.44 TO STA. 145+04.60

B.M. ELV. 1193.78
SPK. IN P.P.
STA. 118+87 L.T. 320'



EVANGELINE ZUPKO
1/1/97

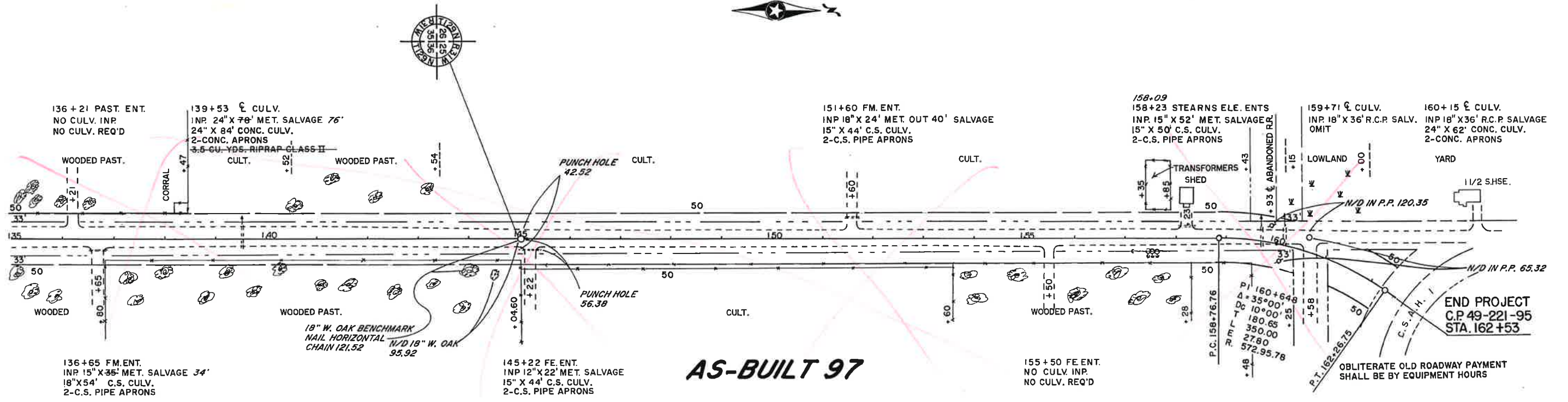
P.I. 145+04.60
 $\Delta = 0^\circ 07' 15''$ RT

P.I. 160+57.41
 $\Delta = 35^\circ 00'$ RT

FREDRICK & ETHEL KARPINSKI
 STA. 130+15.92 TO STA. 138+47

DENNIS P. & ELAINE R. SUPER
 STA. 138+47 TO STA. 157+35

STEARNS CO-OP ELECTRIC ASSN.
 STA. 157+35 TO STA. 159+43



AS-BUILT 97

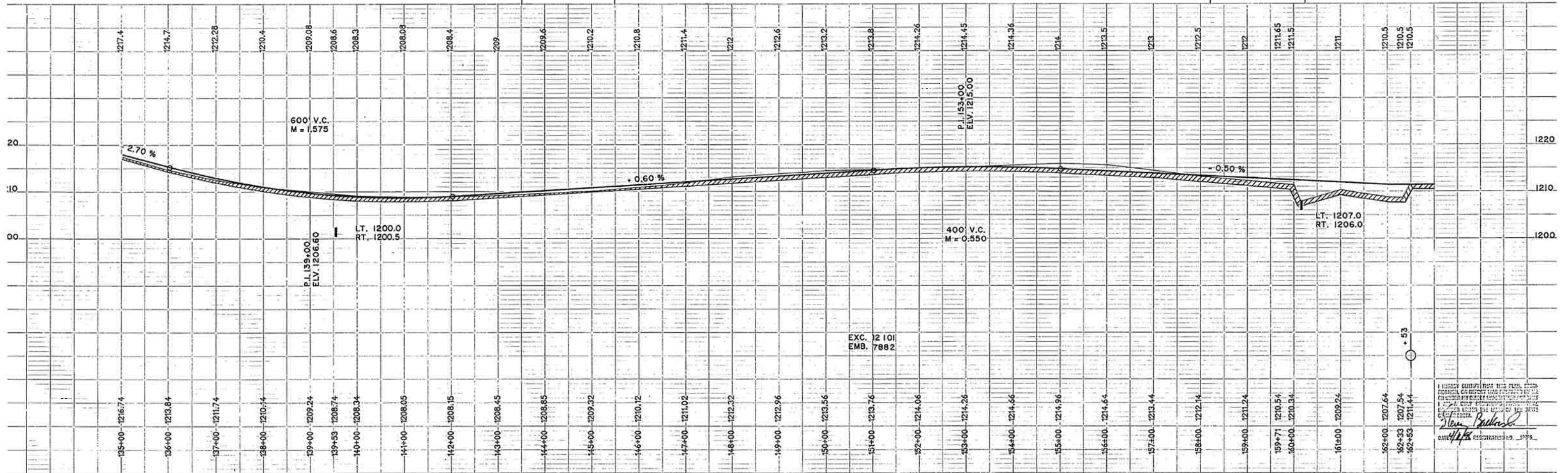
EVANGELINE ZUPKO
 STA. 118+84.44 TO STA. 145+04.60

B.M. ELV. 1205.49
 SPK. IN 18\"/>

DOUGLAS JAMES ZUPKO
 STA. 145+09.60 TO STA. 159+48

B.M. ELV. 1209.43
 SPK. IN 18\"/>

CITY OF FLENSBURG
 STA 161+04 TO STA 162+22



C.P. 49-221-95

SHEET NO. 8 OF 25 SHEETS

I HEREBY CERTIFY THAT THIS PLAN, SPECIFICATIONS, CONTRACT AND PROFILES FOR THE CONSTRUCTION OF THE ABOVE PROJECT HAVE BEEN PREPARED BY ME OR UNDER MY CLOSE PERSONAL SUPERVISION AND THAT I AM A DULY LICENSED PROFESSIONAL ENGINEER IN THE STATE OF PENNSYLVANIA.
Steve Ballou
 DATE 4/17/01 REGISTERED NO. 11979