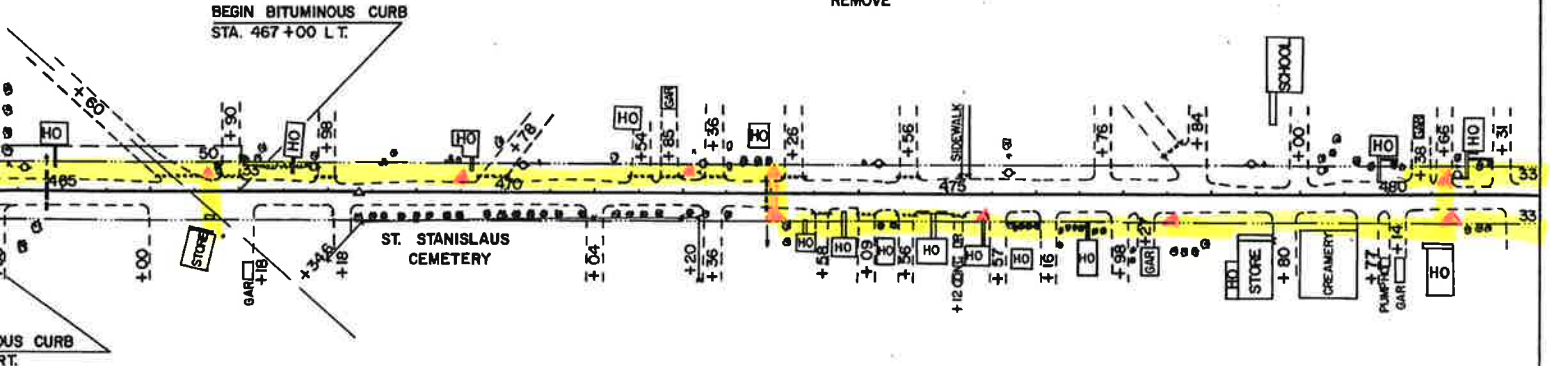


SOPHIE NAGORSKI
 STA. 463+55.0 TO 468+00 P.O.T. 468 + 34.6

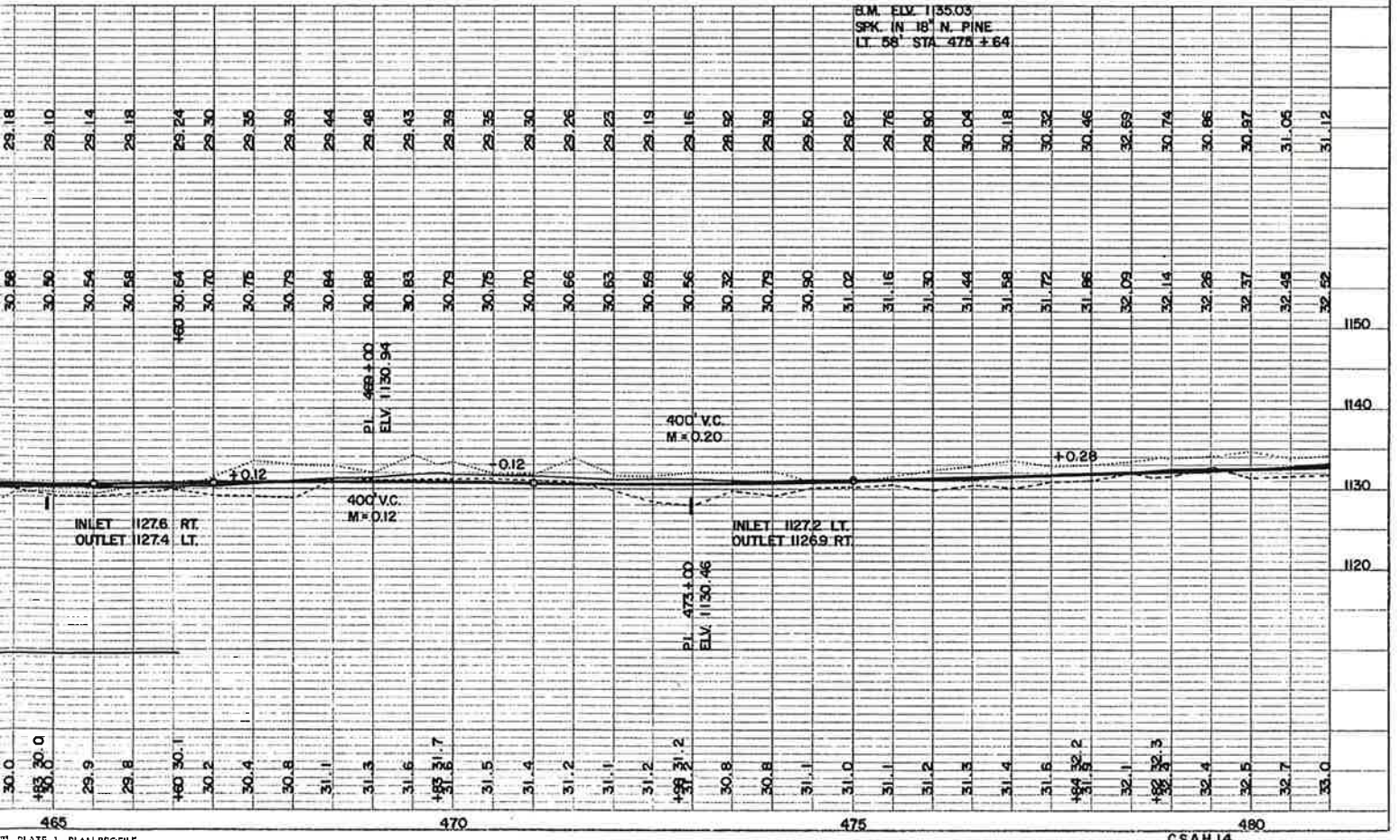
- 466+60 TWP RD.
INP 18"X53' MET. REMOVE
15"X32' R.C. CL.III + 2 APRONS REMOVE
- 467+98 ENT.
INP 12"X24' MET. REMOVE
- 469+78 TWP RD.
INP 15"X24' MET. REMOVE
- 471+85 ENT.
INP 15"X24' MET. REMOVE
- 472+98.5 CULV.
INP 30"X40' MET. REMOVE
29"X18"X52' R.C. CL.II
1 GROOVE END APRON
2 CATCH BASINS
- 474+56 ENT.
INP 18"X30' MET. REMOVE
- 474+21 CHURCH WALK
INP 18"X18' MET. REMOVE
- 476+76 ENT.
INP 15"X26' MET. REMOVE
- 477+84 ENT.
NO CULV. INP
- 479+00 ENT.
NO CULV. INP
- 480+38 ENT.
NO CULV. INP

- 473+26 CHURCH ENT.
INP 18"X24' MET. REMOVE
- 480+66 ENT.
NO CULV.

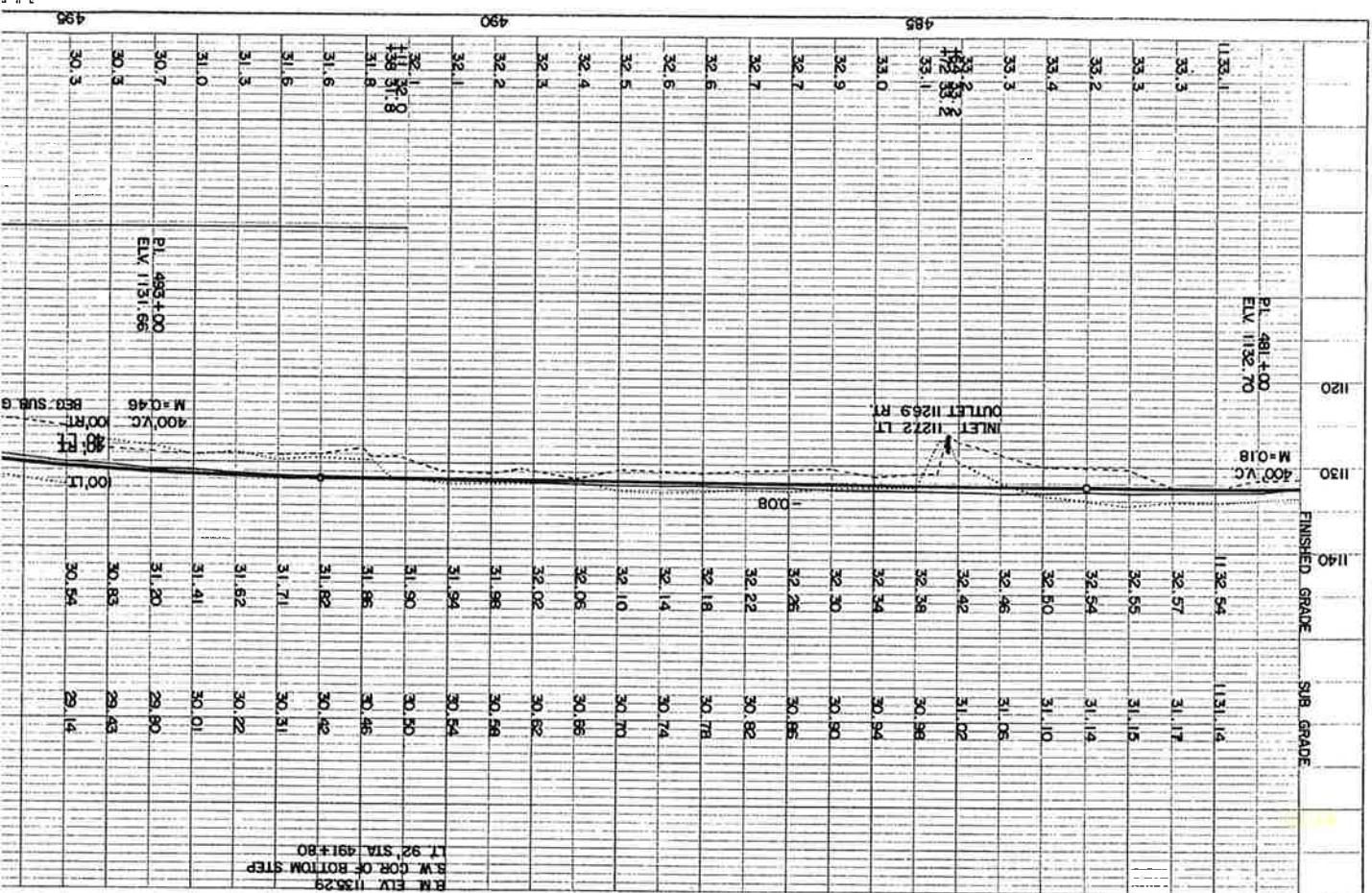


- 464+35 ENT.
NO CULV. INP
- 466+00 TO 467+18 STORE ENT.
NO CULV. INP
- 468+18 ENT.
NO CULV. INP
- 471+04 CEMETERY ENT.
NO CULV. INP
- 472+26 ENT.
INP 15"X24' MET. REMOVE
- 473+58 ENT.
INP 12"X20' MET. REMOVE
- 474+09 ENT.
INP 12"X18' MET. REMOVE
- 474+56 ENT.
INP 12"X20' MET. REMOVE
- 475+12 ENT.
INP 12"X14' MET. REMOVE
- 475+57 ENT.
NO CULV. INP
- 476+16 ENT.
NO CULV. INP
- 476+98 ENT.
NO CULV. INP
- 477+27 ENT.
NO CULV. INP
- 478+71 TO 96 ALLEY
NO CULV. INP
- 479+65 TO 90 ENT.
NO CULV. INP
- 480+14 ENT.
NO CULV. INP

CL. 7 TRS GR. 8 TRS.



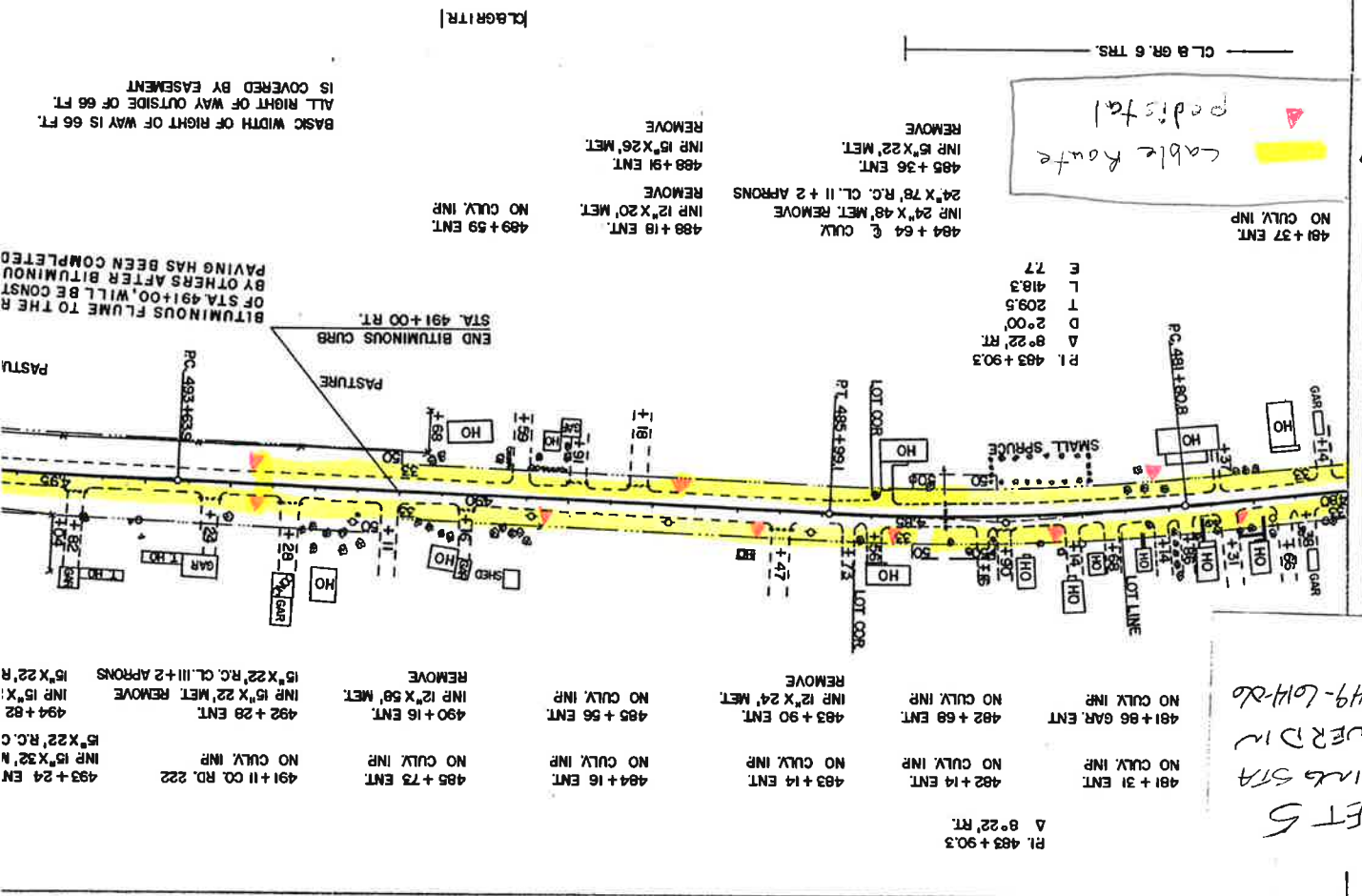
| PROFILE | |
|---------|--|
| DATE | |
| PROJECT | |
| NO. | |
| SCALE | |
| BY | |
| CHECKED | |
| DATE | |



System Legend

Cable Route
 pedistal

| PLAN | |
|---------|--|
| DATE | |
| PROJECT | |
| NO. | |
| SCALE | |
| BY | |
| CHECKED | |
| DATE | |



SHEET 5
 MISSING STA
 IS COVERED IN
 PROJ 49-644-20

PL 483+90.3
 Δ 8°22' RT.

- 481 + 31 ENT NO CULV. INF
- 481 + 66 GAR. ENT NO CULV. INF
- 482 + 14 ENT NO CULV. INF
- 482 + 68 ENT NO CULV. INF
- 483 + 14 ENT NO CULV. INF
- 483 + 90 ENT INF 12" X 24" MET. REMOVE
- 485 + 16 ENT NO CULV. INF
- 485 + 56 ENT NO CULV. INF
- 485 + 73 ENT NO CULV. INF
- 491 + 11 CO. RD. 222 INF 15" X 32" N
- 493 + 24 ENT INF 15" X 22" R.C.
- 494 + 82 INF 15" X 22" R.C. CL. III + 2 APRONS REMOVE
- 494 + 28 ENT INF 15" X 22" MET. REMOVE
- 490 + 16 ENT INF 12" X 58" MET. REMOVE

BITUMINOUS FLUME TO THE R OF STA 491+00, WILL BE CONST BY OTHERS AFTER BITUMINOUS PAVING HAS BEEN COMPLETED

BASIC WIDTH OF RIGHT OF WAY IS 66 FT. ALL RIGHT OF WAY OUTSIDE OF 66 FT. IS COVERED BY EASEMENT

CL 8 GR. 6 TRS.

R.M. ELY 1135.29
 B.W. COR. OF BOTTOM STEP LT 92 STA 491+80

PL 483+00
 ELY 1131.66

PL 481+00
 ELY 1132.70