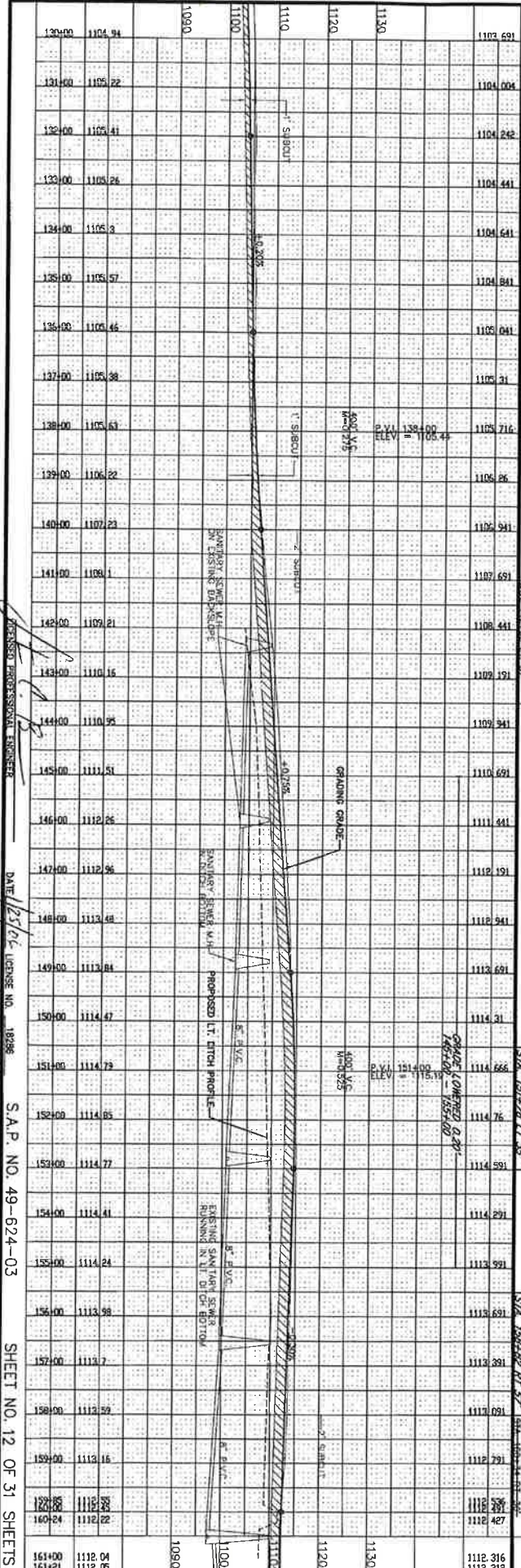


JOSEPH KUSCH & MARY LANGE-KUSCH  
119+77 TO 149+08

# AS BUILT 2004

Fiber Route



140+17 FE. ENT.  
15" X 42" C.S. PIPE REMOVE  
2-C.S. PIPE ARCHONS (STD.)

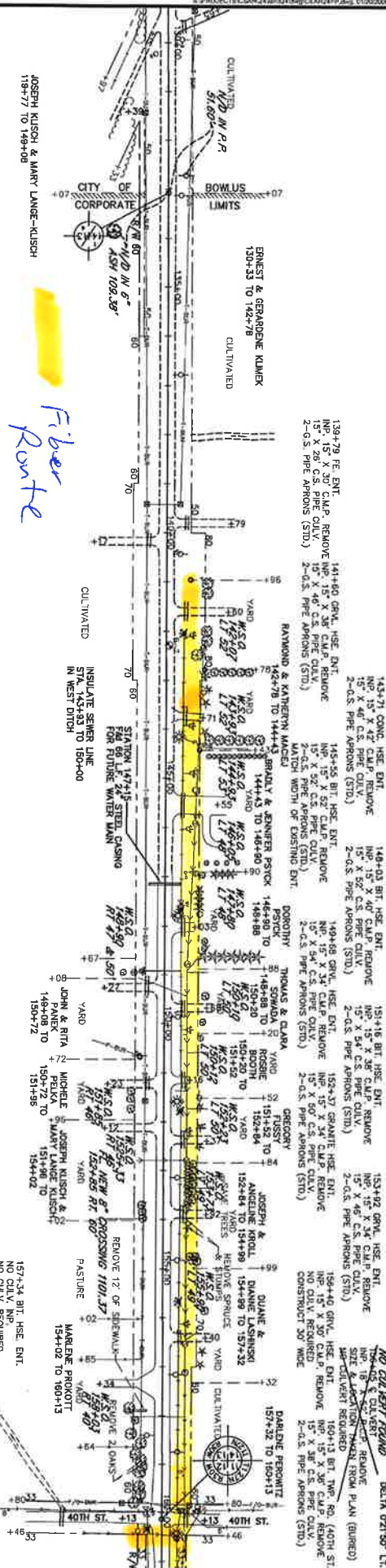
149+27 GRN. HSE. ENT.  
15" X 42" C.S. PIPE REMOVE  
15" X 36" C.S. PIPE CULV.  
2-C.S. PIPE ARCHONS (STD.)

151+23 GRN. HSE. ENT.  
15" X 28" C.S. PIPE REMOVE  
15" X 36" C.S. PIPE CULV.  
2-C.S. PIPE ARCHONS (STD.)

153+13 GRN. HSE. ENT.  
NO CULV. REQUIRED

157+13 BIT. HSE. ENT.  
NO CULV. REQUIRED

24" X 28" C.S. PIPE  
2-C.S. PIPE ARCHONS  
INSTALLED BY D



DATE: 1/23/06 LICENSE NO. 18296

S.A.P. NO. 49-624-03

SHEET NO. 12 OF 31 SHEETS

PLAN  
 DELTA 02/15/00 LT.  
 P.I. 180+12.88

181+21.6 CULVERT  
 24' X 26' R.C. PIPE CULV.  
 2-R.C. PIPE APPROX (STD)

184+05 GRV. HSE. ENT.  
 12' X 24' C.M.P. REMOVE  
 12' C.S. PIPE APPROX (STD)  
 2-C.S. PIPE APPROX (STD)

168+45 BIT. HSE. ENT.  
 15' X 30' C.S. PIPE CULV.  
 2-C.S. PIPE APPROX (STD)

168+55 BIT. HSE. ENT.  
 15' X 30' C.S. PIPE CULV.  
 2-C.S. PIPE APPROX (STD)

171+00 CONSTRUCT FE. ENT.  
 NO CULV. REQ.

171+00 CONSTRUCT FE. ENT.  
 NO CULV. REQ.

186+87 GRV. TWP. RD. (45TH ST)  
 NO CULV. REQ.

187+25 CONSTR  
 RT. 240' NO ENT.  
 NO CULV. REQ.

167+02 BIT. HSE. ENT.  
 12' X 24' C.M.P. REMOVE  
 12' C.S. PIPE APPROX (STD)  
 2-C.S. PIPE APPROX (STD)

182+40 TO 182+40  
 182+40 TO 182+40  
 182+40 TO 182+40

182+40 TO 182+40  
 182+40 TO 182+40  
 182+40 TO 182+40

182+40 TO 182+40  
 182+40 TO 182+40  
 182+40 TO 182+40

182+40 TO 182+40  
 182+40 TO 182+40  
 182+40 TO 182+40

182+40 TO 182+40  
 182+40 TO 182+40  
 182+40 TO 182+40

182+40 TO 182+40  
 182+40 TO 182+40  
 182+40 TO 182+40

182+40 TO 182+40  
 182+40 TO 182+40  
 182+40 TO 182+40

182+40 TO 182+40  
 182+40 TO 182+40  
 182+40 TO 182+40

182+40 TO 182+40  
 182+40 TO 182+40  
 182+40 TO 182+40

182+40 TO 182+40  
 182+40 TO 182+40  
 182+40 TO 182+40

182+40 TO 182+40  
 182+40 TO 182+40  
 182+40 TO 182+40

182+40 TO 182+40  
 182+40 TO 182+40  
 182+40 TO 182+40

182+40 TO 182+40  
 182+40 TO 182+40  
 182+40 TO 182+40

182+40 TO 182+40  
 182+40 TO 182+40  
 182+40 TO 182+40

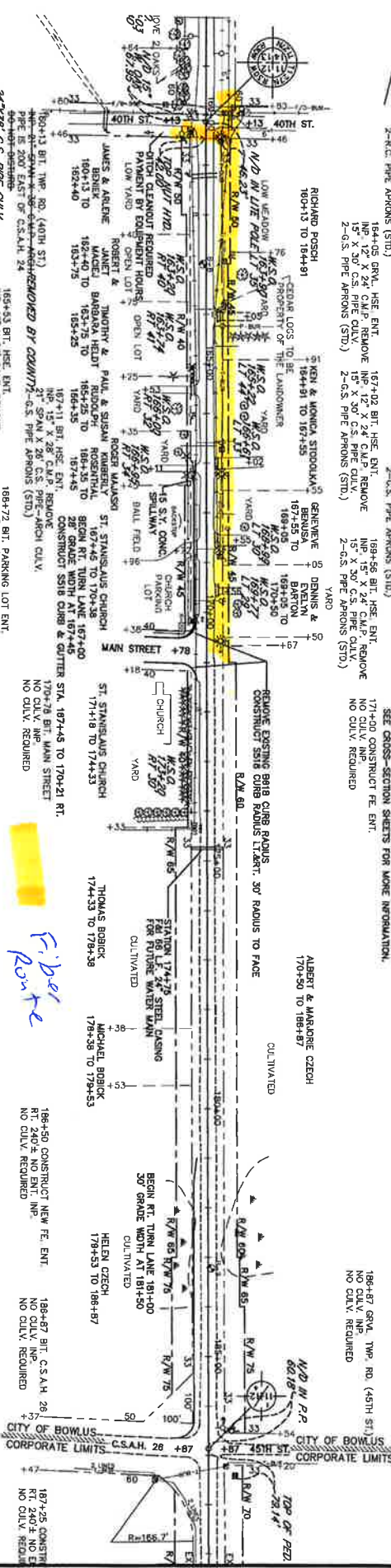
182+40 TO 182+40  
 182+40 TO 182+40  
 182+40 TO 182+40

182+40 TO 182+40  
 182+40 TO 182+40  
 182+40 TO 182+40

182+40 TO 182+40  
 182+40 TO 182+40  
 182+40 TO 182+40

182+40 TO 182+40  
 182+40 TO 182+40  
 182+40 TO 182+40

182+40 TO 182+40  
 182+40 TO 182+40  
 182+40 TO 182+40



**AS BUILT 2004**

Station	Elevation	Remarks
1113.781		
1112.791		
1111.427		
1112.316		
1112.212		
1112.282		
1112.04		
1112.05		
1112.44		
1112.72		
1112.5		
1112.79		
1113.37		
1113.87		
1114.92		
1116.47		
1117.48		
1118.4		
1118.56		
1118.41		
1117.86		
1117.82		
1116.18		
1115.27		
1114.57		
1114.16		
1113.99		
1113.57		
1113.1		
1113.28		
1114.42		
1115.42		
1116.47		
1117.82		
1117.45		
1117.11		
1117.54		
1117.742		

DATE 1/25/04 LICENSE NO. 18286 S.A.P. NO. 49-624-03 SHEET NO. 13 OF 31 SHEETS