

DRAWN BY: [Name]  
DATE: [Date]  
CONTRACT NO. 506-01

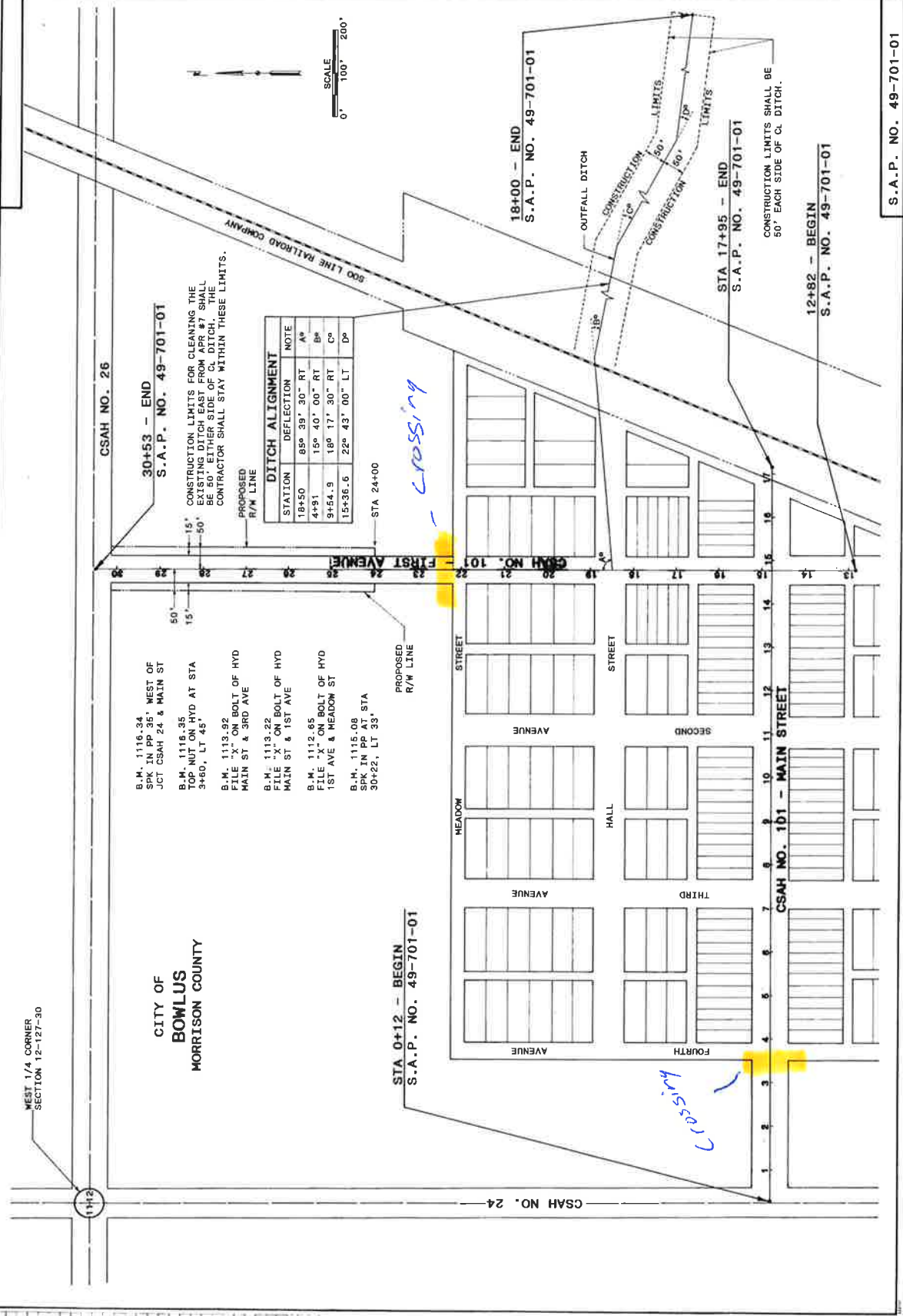
REVISIONS

1. [Description of revision]  
2. [Description of revision]

GENERAL LAYOUT  
AND ALIGNMENT

PROJECT ENGINEER: [Name]  
DESIGNED BY: [Name]  
CHECKED BY: [Name]  
DATE: [Date]

SHEET NO. **D2**



STATION	DEFLECTION	NOTE
18+50	85° 39' 30" RT	A <sup>b</sup>
4+91	15° 40' 00" RT	B <sup>b</sup>
9+54.9	18° 17' 30" RT	C <sup>b</sup>
15+36.6	22° 43' 00" LT	D <sup>b</sup>

- B.M. 1116.34  
SPK IN PP 35' WEST OF  
JCT CSAH 24 & MAIN ST
- B.M. 1116.95  
TOP NUT ON HYD AT STA  
3+60, LT 45'
- B.M. 1113.92  
FILE "X" ON BOLT OF HYD  
MAIN ST & 3RD AVE
- B.M. 1113.22  
FILE "X" ON BOLT OF HYD  
MAIN ST & 1ST AVE
- B.M. 1112.65  
FILE "X" ON BOLT OF HYD  
1ST AVE & MEADOW ST
- B.M. 1115.08  
SPK IN PP AT STA  
30+22, LT 33'

CITY OF  
**BOWLUS**  
MORRISON COUNTY

WEST 1/4 CORNER  
SECTION 12-127-30

S.A.P. NO. 49-701-01