



101
Ret 1032 1/0 ACSR
Ret 344 2 ACSR
Ret 1 35-5
Ret 1 C1.11P
Ret 1 H1.1

4
New 1204 4/0 ACSR
New 1 40-4 CEDAR
New 1 C1.11P
New 1 H1.1

100
Ret 1050 1/0 ACSR
Ret 350 2 ACSR
Ret 1 30-6
Ret 1 C1.11P
Ret 2 E1.1
Ret 2 F2.8
Ret 1 H1.1

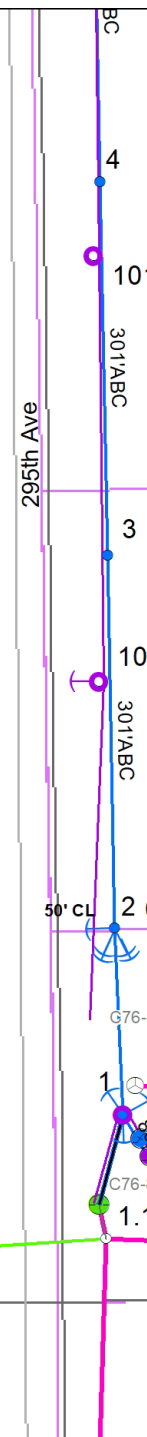
3
New 1204 4/0 ACSR
New 1 40-4 CEDAR
New 1 C1.11P
New 1 H1.1

2 (-1.4°)
New 604 4/0 ACSR
New 1 40-2 CEDAR
New 1 C5.71L.8P
New 4 E1
New 1 E1.1
New 1 F2.8
New 4 F6.6
New 1 H1.1

1
New 1 35-4 CEDAR
New 240 4/0 ACSR
New 1 C5.71L.10P
New 1 C5.71L.8P
New 3 E1
New 2 F2.10
New 1 F6.6
New 1 H1.1
New 3 L1.1
New 1 L2.1
New 1 S1.3 C76-8B
Ret 240 1/0 ACSR
Ret 1 35-4
Ret 1 C2.51
Ret 1 C5.21
Ret 2 E1.1
Ret 1 H1.1
Ret 1 S1.3 C76-8B

1.1
Ext 112 1/0 ACSR
Ext 225 1/0 ACSR
New 100 4/0 ACSR NEUTRAL
Ret 100 2 ACSR NEUTRAL

SUB
New 3 L1.5
Ret 3 L1.5





40
New 1152 4/0 ACSR
New 1 40-4 CEDAR
New 1 C1.11P
New 1 H1.1

125
Ret 897 1/0 ACSR
Ret 299 2 ACSR
Ret 1 40-5
Ret 1 C2.24P
Ret 1 H1.1

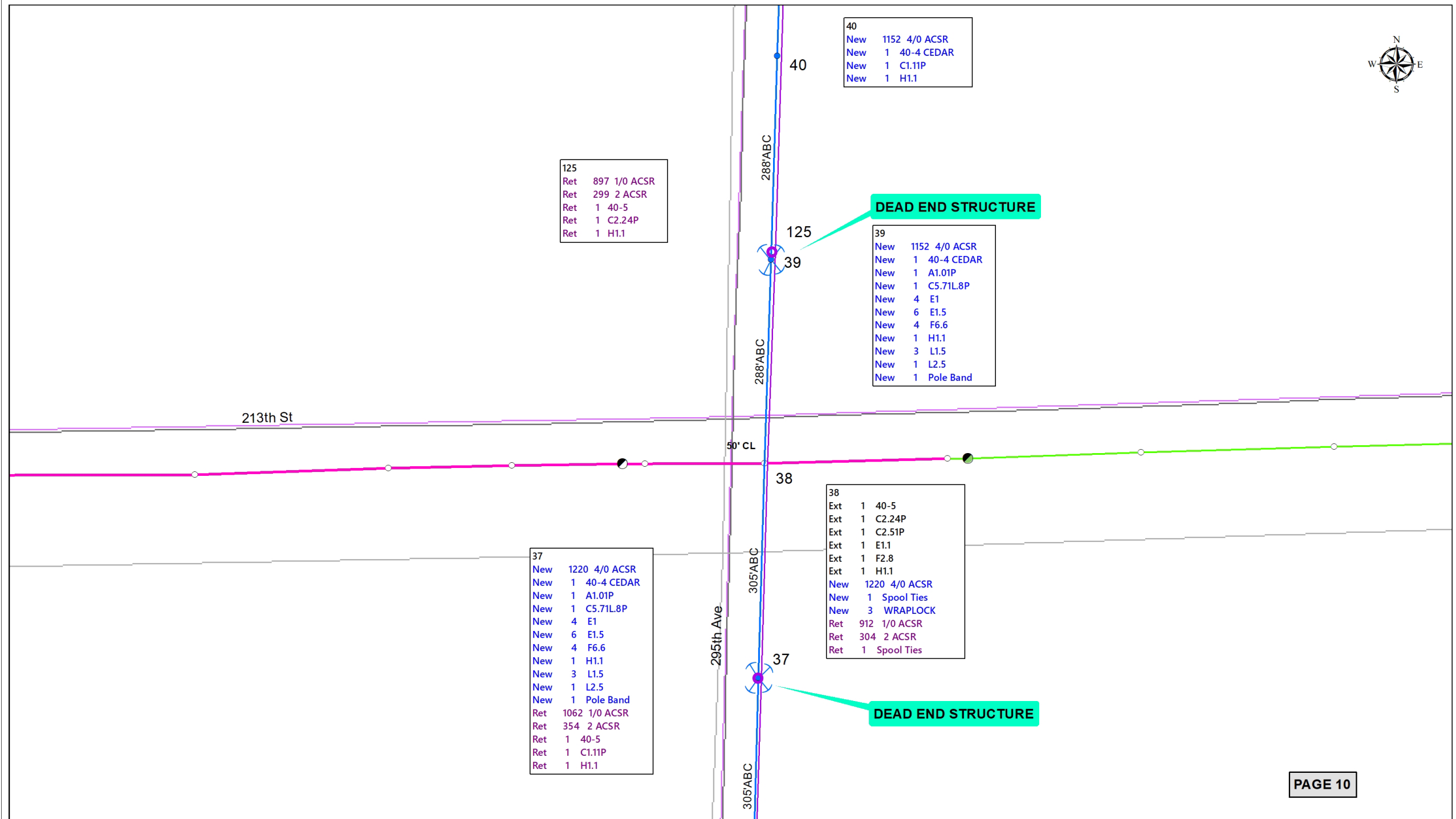
DEAD END STRUCTURE

39
New 1152 4/0 ACSR
New 1 40-4 CEDAR
New 1 A1.01P
New 1 C5.71L.8P
New 4 E1
New 6 E1.5
New 4 F6.6
New 1 H1.1
New 3 L1.5
New 1 L2.5
New 1 Pole Band

38
Ext 1 40-5
Ext 1 C2.24P
Ext 1 C2.51P
Ext 1 E1.1
Ext 1 F2.8
Ext 1 H1.1
New 1220 4/0 ACSR
New 1 Spool Ties
New 3 WRAPLOCK
Ret 912 1/0 ACSR
Ret 304 2 ACSR
Ret 1 Spool Ties

DEAD END STRUCTURE

37
New 1220 4/0 ACSR
New 1 40-4 CEDAR
New 1 A1.01P
New 1 C5.71L.8P
New 4 E1
New 6 E1.5
New 4 F6.6
New 1 H1.1
New 3 L1.5
New 1 L2.5
New 1 Pole Band
Ret 1062 1/0 ACSR
Ret 354 2 ACSR
Ret 1 40-5
Ret 1 C1.11P
Ret 1 H1.1





295th Ave

288'ABC

130
Ret 879 1/0 ACSR
Ret 293 2 ACSR
Ret 1 35-5
Ret 1 C1.11P
Ret 1 H1.1

44
New 1152 4/0 ACSR
New 1 40-4 CEDAR
New 1 C1.11P
New 1 H1.1

43
New 1152 4/0 ACSR
New 1 40-4 CEDAR
New 1 C1.11P
New 1 H1.1

129
Ret 1155 1/0 ACSR
Ret 385 2 ACSR
Ret 1 35-5
Ret 1 C1.11P
Ret 1 H1.1

**10' OF MUCK
NEED CULVERT**

42
New 1152 4/0 ACSR
New 1 40-4 CEDAR
New 1 C1.11P
New 1 H1.1

128
Ret 342 1/0 ACSR
Ret 114 2 ACSR
Ret 1 30-6
Ret 1 C1.11P
Ret 1 H1.1

127
Ret 252 1/0 ACSR
Ret 84 2 ACSR
Ret 1 30-6
Ret 1 C1.11
Ret 1 H1.1

41
New 1152 4/0 ACSR
New 1 40-4 CEDAR SET 7' DEEP
New 1 C1.11P
New 1 H1.1

126
Ret 1077 1/0 ACSR
Ret 359 2 ACSR
Ret 1 30-6
Ret 1 C1.11P
Ret 1 H1.1



- 48
- New 1156 4/0 ACSR
 - New 1 40-4 CEDAR
 - New 1 C1.11P
 - New 1 E1.1
 - New 1 F2.8
 - New 1 G9-10 X9124
 - New 1 H1.1
 - New 1 K15L
 - Ret 741 1/0 ACSR
 - Ret 247 2 ACSR
 - Ret 1 35-5
 - Ret 1 C1.11P
 - Ret 1 E1.1
 - Ret 1 F2.8
 - Ret 1 G9-10 X9124
 - Ret 1 H1.1
 - Ret 1 K15L

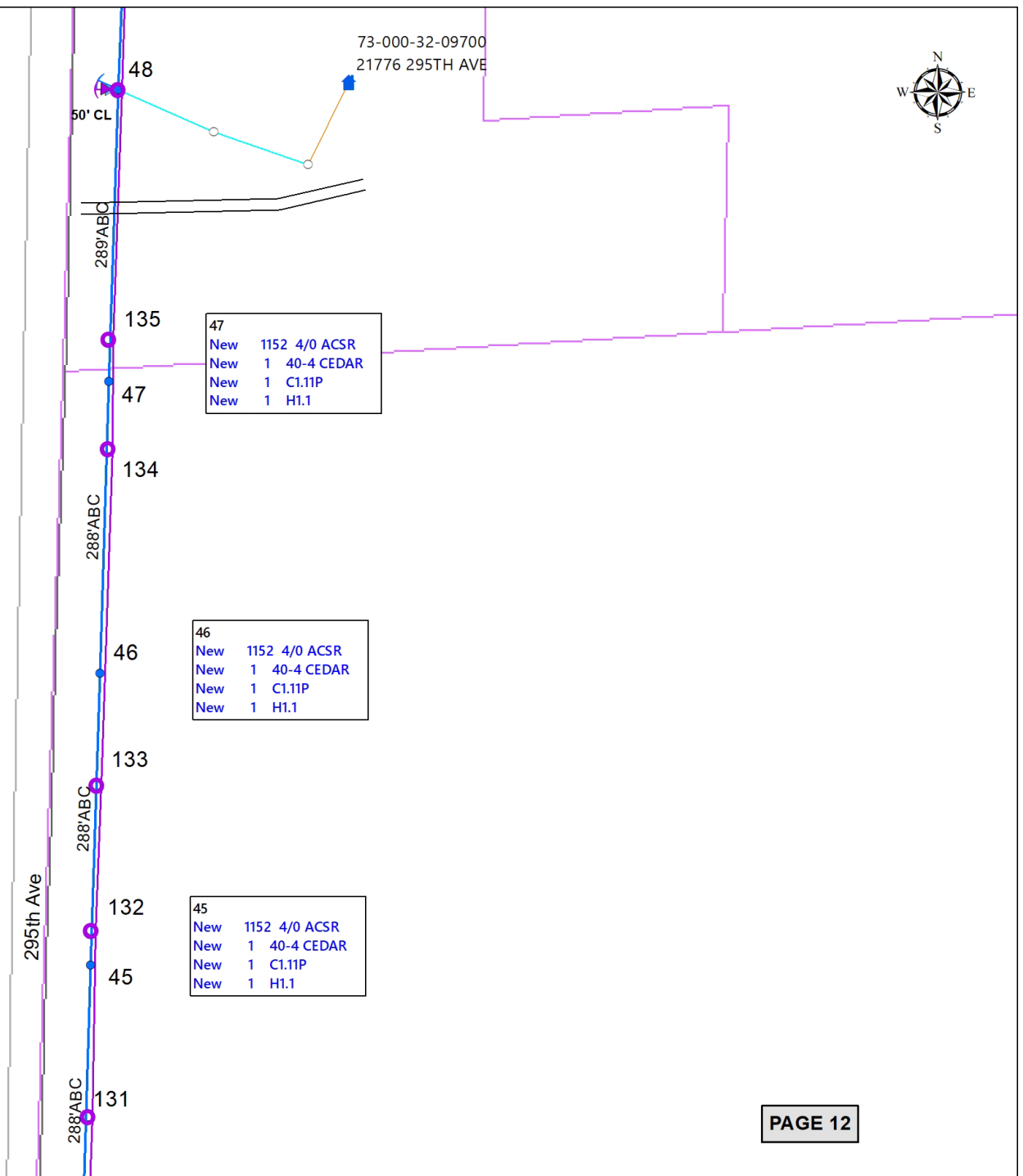
- 135
- Ret 324 1/0 ACSR
 - Ret 108 2 ACSR
 - Ret 1 30-6
 - Ret 1 C1.11
 - Ret 1 H1.1

- 134
- Ret 999 1/0 ACSR
 - Ret 333 2 ACSR
 - Ret 1 30-6
 - Ret 1 C1.11P
 - Ret 1 H1.1

- 133
- Ret 429 1/0 ACSR
 - Ret 143 2 ACSR
 - Ret 1 30-6
 - Ret 1 C1.11P
 - Ret 1 H1.1

- 132
- Ret 552 1/0 ACSR
 - Ret 184 2 ACSR
 - Ret 1 35-6
 - Ret 1 C1.11
 - Ret 1 H1.1

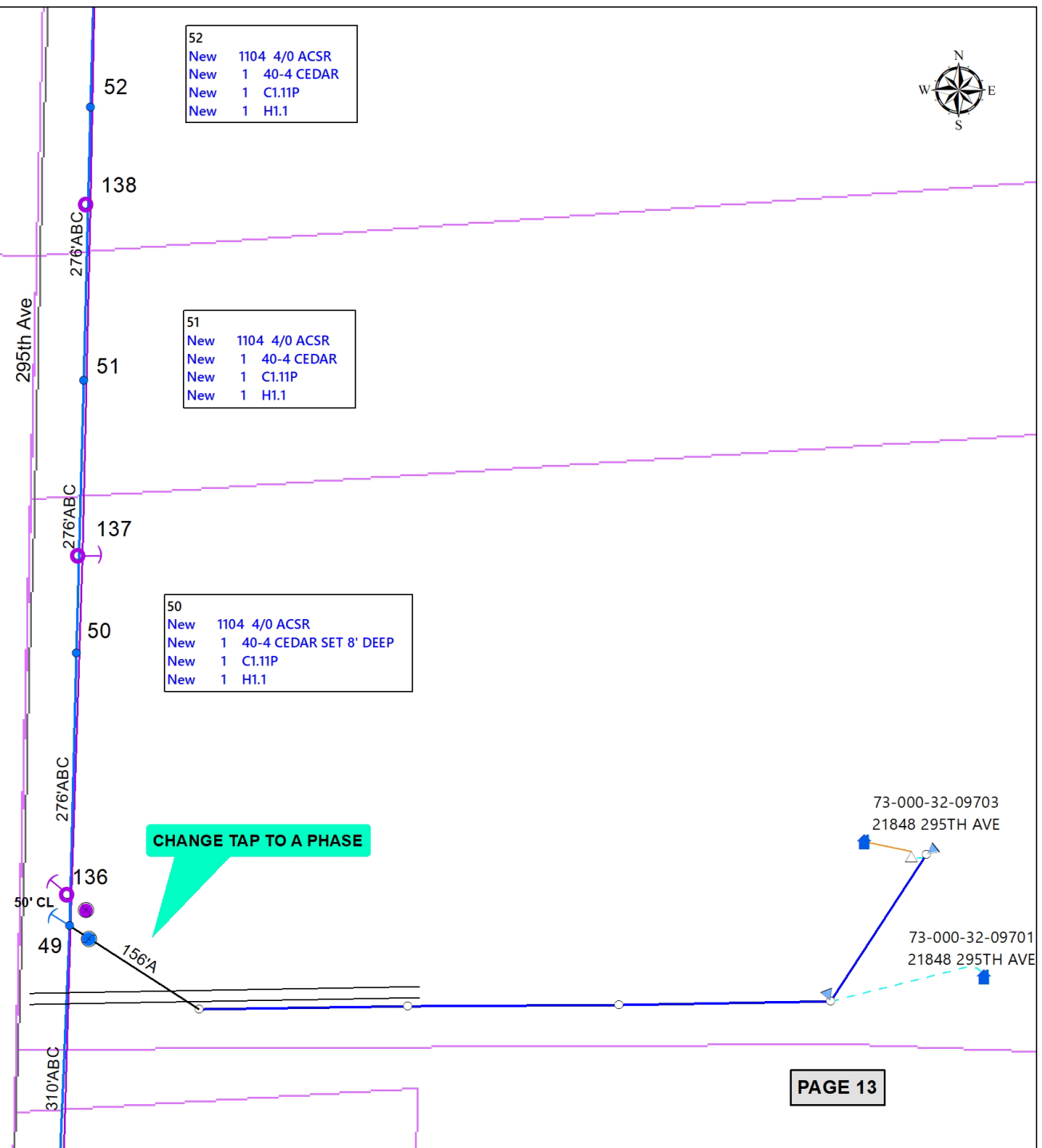
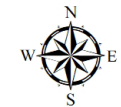
- 131
- Ret 993 1/0 ACSR
 - Ret 331 2 ACSR
 - Ret 1 35-5
 - Ret 1 C1.11P
 - Ret 1 H1.1



- 47
- New 1152 4/0 ACSR
 - New 1 40-4 CEDAR
 - New 1 C1.11P
 - New 1 H1.1

- 46
- New 1152 4/0 ACSR
 - New 1 40-4 CEDAR
 - New 1 C1.11P
 - New 1 H1.1

- 45
- New 1152 4/0 ACSR
 - New 1 40-4 CEDAR
 - New 1 C1.11P
 - New 1 H1.1



52
 New 1104 4/0 ACSR
 New 1 40-4 CEDAR
 New 1 C1.11P
 New 1 H1.1

138
 Ret 1068 1/0 ACSR
 Ret 356 2 ACSR
 Ret 1 30-6
 Ret 1 C1.11P
 Ret 1 H1.1

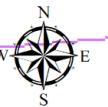
51
 New 1104 4/0 ACSR
 New 1 40-4 CEDAR
 New 1 C1.11P
 New 1 H1.1

137
 Ret 1029 1/0 ACSR
 Ret 343 2 ACSR
 Ret 1 30-6
 Ret 1 C1.11P
 Ret 1 E1.1
 Ret 1 F1.8
 Ret 1 H1.1

50
 New 1104 4/0 ACSR
 New 1 40-4 CEDAR SET 8' DEEP
 New 1 C1.11P
 New 1 H1.1

136
 Ret 1026 1/0 ACSR
 Ret 342 2 ACSR
 Ret 1 35-5 CEDAR
 Ret 1 A5.3
 Ret 1 C1.11P
 Ret 1 E1.1
 Ret 1 F1.8
 Ret 1 H1.1
 Ret 1 S1.01

49
 New 1240 4/0 ACSR
 New 1 40-4 CEDAR
 New 1 A5.3
 New 1 C1.11P
 New 1 E1.1
 New 1 F2.8
 New 1 H1.1
 New 1 S1.01 25T FUSE-A PHASE



142
 Ret 906 1/0 ACSR
 Ret 302 2 ACSR
 Ret 1 35-5
 Ret 1 C2.21P
 Ret 1 E1.1
 Ret 1 F2.8
 Ret 1 H1.1

56 (3.9°)
 New 1184 4/0 ACSR
 New 1 45-4 CEDAR SET 8.5' DEEP
 New 1 C2.21P
 New 1 E1.1
 New 1 F2.10
 New 1 H1.1

141
 Ret 1053 1/0 ACSR
 Ret 351 2 ACSR
 Ret 1 35-6
 Ret 1 C1.11P
 Ret 1 H1.1

55
 New 1144 4/0 ACSR
 New 1 40-4 CEDAR SET 7' DEEP
 New 1 C1.11P
 New 1 H1.1

140
 Ret 1038 1/0 ACSR
 Ret 346 2 ACSR
 Ret 1 30-6
 Ret 1 C1.11P
 Ret 1 H1.1

54
 New 1144 4/0 ACSR
 New 1 40-4 CEDAR
 New 1 C1.11P
 New 1 H1.1

139
 Ret 1077 1/0 ACSR
 Ret 359 2 ACSR
 Ret 1 35-5
 Ret 1 C1.11P
 Ret 1 H1.1
 Ret 1 Y3.3

**RETIRE EXISTING CAP BANK
 NEW BANK TO BE HUNG DOWNLINE**

53
 New 1104 4/0 ACSR
 New 1 40-4 CEDAR
 New 1 C1.11P
 New 1 H1.1

295th Ave

142
 296'ABC
 141
 50' CL
 55
 286'ABC
 140
 54
 286'ABC
 53
 139
 276'ABC



- 144
- Ret 990 1/0 ACSR
- Ret 330 2 ACSR
- Ret 1 40-5
- Ret 1 A2.21
- Ret 1 C2.21P
- Ret 1 H1.1
- Ret 1 S1.01

- 143
- Ret 1077 1/0 ACSR
- Ret 359 2 ACSR
- Ret 1 35-5
- Ret 1 C1.11P
- Ret 1 H1.1

- 60
- New 1380 4/0 ACSR
- New 1 40-4 CEDAR SET 7' DEEP
- New 1 A6.21
- New 1 C1.11P
- New 2 E1.5
- New 1 H1.1
- New 1 S1.01 25T FUSE-A PHASE
- New 1 S1.01 25T FUSE-B PHASE

- 59
- New 1376 4/0 ACSR
- New 1 40-4 CEDAR SET 7' DEEP
- New 1 C1.11P
- New 1 H1.1

- 58
- Ext 1 F2.8
- New 1024 4/0 ACSR
- New 1 40-4 CEDAR
- New 1 C1.11P
- New 1 E1.1
- New 1 G9-15 9228C
- New 1 H1.1
- New 1 K15L
- Ret 1191 1/0 ACSR
- Ret 397 2 ACSR
- Ret 1 40-5
- Ret 1 C1.11P
- Ret 1 E1.1
- Ret 1 G9-15 9228C
- Ret 1 H1.1
- Ret 1 K15L

- 57
- New 1024 4/0 ACSR
- New 1 45-4 CEDAR SET 7.5' DEEP
- New 1 C1.11P
- New 1 H1.1

CHANGE TAP TO A PHASE

7' OF MUCK
NEED CULVERT

73-000-30-08601
22421 295TH AVE

73-000-29-08600
22424 295TH AVE

73-000-30-08603
22313 295TH AVE

50' CL

144

60

345'ABC

143

59

344'ABC

58

50' CL

295th Ave

256'ABC

57

256'ABC

216'B

163'A



73-000-30-08604
22715 295TH AVE

50' CL
148

148
Ret 870 1/0 ACSR
Ret 290 2 ACSR
Ret 1 40-5
Ret 1 A5.21
Ret 1 C1.11
Ret 1 E1.1
Ret 1 H1.1
Ret 1 S1.01

147
Ret 969 1/0 ACSR
Ret 323 2 ACSR
Ret 1 35-5
Ret 1 C1.11P
Ret 1 H1.1

146
Ret 1020 1/0 ACSR
Ret 340 2 ACSR
Ret 1 35-5
Ret 1 C1.11P
Ret 1 H1.1

62
New 1052 4/0 ACSR
New 1 40-4 CEDAR
New 1 A1.01P
New 1 C5.71L.8P
New 4 E1
New 6 E1.5
New 4 F6.6
New 1 H1.1
New 3 L1.5
New 1 L2.5
New 1 Pole Band

145
Ret 1077 1/0 ACSR
Ret 359 2 ACSR
Ret 1 35-6
Ret 1 C1.11P
Ret 1 H1.1

65
Ext 1 F6.6
New 1048 4/0 ACSR
New 1 40-4 CEDAR
New 1 A5.21
New 1 C1.11P
New 1 E1.1
New 1 H1.1
New 1 S1.01 25T FUSE-B PHASE

64
New 1052 4/0 ACSR
New 1 40-4 CEDAR
New 1 C1.11P
New 1 H1.1

63
New 1052 4/0 ACSR
New 1 40-4 CEDAR
New 1 C1.11P
New 1 H1.1

61
New 1052 4/0 ACSR
New 1 40-4 CEDAR
New 1 C1.11P
New 1 H1.1

295th Ave

262'A:BC

263'A:BC

263'A:BC

263'A:BC

263'A:BC



DEAD END STRUCTURE



295th Ave

151
Ret 993 1/0 ACSR
Ret 331 2 ACSR
Ret 1 35-5
Ret 1 C1.11P
Ret 1 H1.1

150
Ret 1062 1/0 ACSR
Ret 354 2 ACSR
Ret 1 35-5
Ret 1 C1.11P
Ret 1 H1.1

149
Ret 1029 1/0 ACSR
Ret 343 2 ACSR
Ret 1 35-5
Ret 1 C1.11
Ret 1 H1.1

307/ABC

151

68

307/ABC

150

67

307/ABC

149

66

307/ABC

68
New 1228 4/0 ACSR
New 1 40-4 CEDAR
New 1 C1.11P
New 1 H1.1

67
New 1228 4/0 ACSR
New 1 40-4 CEDAR
New 1 C1.11P
New 1 H1.1

66
New 1228 4/0 ACSR
New 1 40-4 CEDAR
New 1 C1.11P
New 1 H1.1



295th Ave

154
Ret 1044 1/0 ACSR
Ret 348 2 ACSR
Ret 1 35-5
Ret 1 C1.11P
Ret 1 H1.1

72
New 1228 4/0 ACSR
New 1 40-4 CEDAR
New 1 C1.11P
New 1 H1.1

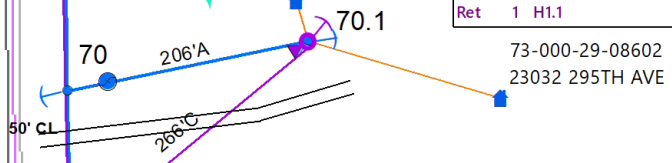
153
Ret 1059 1/0 ACSR
Ret 353 2 ACSR
Ret 1 40-5
Ret 1 C1.11P
Ret 1 H1.1

71
New 1228 4/0 ACSR
New 1 40-4 CEDAR
New 1 C1.11P
New 1 H1.1

70.1
Ext 1 OWNER LOOP
New 1 35-5
New 412 4 ACSR
New 1 A5.1
New 1 E1.1
New 1 F2.8
New 1 G10-10 9058C
New 1 H1.1
Ret 1 35-6
Ret 532 4 ACSR
Ret 1 A5.1
Ret 1 E1.1
Ret 1 F2.8
Ret 1 G10-10 9058C
Ret 1 H1.1

70
New 1224 4/0 ACSR
New 1 40-4 CEDAR
New 1 A5.3
New 1 C1.11P
New 1 E1.1
New 1 F2.8
New 1 H1.1
New 1 S1.01 25T FUSE-A PHASE

CHANGE TAP TO A PHASE



152
Ret 1146 1/0 ACSR
Ret 382 2 ACSR
Ret 1 35-6
Ret 1 C1.11
Ret 1 E1.1
Ret 1 F2.8
Ret 1 H1.1
Ret 1 S1.01

69
New 1228 4/0 ACSR
New 1 45-4 CEDAR SET 7' DEEP
New 1 C1.11P
New 1 H1.1



158
 Ret 741 1/0 ACSR
 Ret 247 2 ACSR
 Ret 1 30-6
 Ret 1 C1.11P
 Ret 1 H1.1

76
 New 1132 4/0 ACSR
 New 1 40-4 CEDAR SET 8' DEEP
 New 1 C1.11P
 New 1 H1.1

157
 Ret 981 1/0 ACSR
 Ret 327 2 ACSR
 Ret 1 35-6
 Ret 1 C1.11P
 Ret 1 H1.1

HANG NEW 150 KVAR FIXED CAP BANK

156
 Ret 894 1/0 ACSR
 Ret 298 2 ACSR
 Ret 1 45-5
 Ret 1 A6.1
 Ret 1 C2.24P
 Ret 1 H1.1
 Ret 1 R1.1
 Ret 1 S1.01

75
 New 1132 4/0 ACSR
 New 1 40-4 CEDAR
 New 1 C1.11P
 New 1 H1.1
 New 1 Y3.3 150KVAR FIXED BANK

233rd St

73-000-30-08700
 29345 233RD ST

CHANGE TAP TO B PHASE

228'B

321'A

74.2

336'A

156

74

74
 New 1224 4/0 ACSR
 New 1 45-4 CEDAR
 New 1 A6.1
 New 1 C1.11P
 New 1 H1.1
 New 1 S1.01 25T FUSE-B PHASE

CHANGE TAP TO A PHASE

74.2
 Ext 1 40-5
 Ext 642 4 ACSR
 New 1 A6.1
 New 1 H1.1
 New 1 R1.2
 Ret 1 A1.1

283'ABC

306'ABC

155
 Ret 1056 1/0 ACSR
 Ret 352 2 ACSR
 Ret 1 35-6
 Ret 1 C1.11

**10' MUCK IN SWAMP
 NEED CULVERT**

155

73

73
 New 1228 4/0 ACSR
 New 1 45-4 CEDAR SET 9.5' DEEP
 New 1 C1.11P
 New 1 H1.1



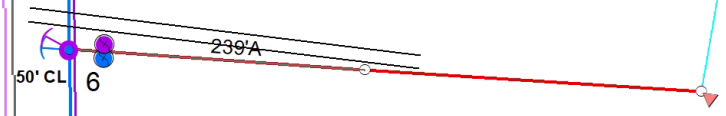
8
New 1200 4/0 ACSR
New 1 40-4 CEDAR
New 1 C1.11P
New 1 H1.1

103
Ret 1158 1/0 ACSR
Ret 386 2 ACSR
Ret 1 35-5
Ret 1 C1.11P
Ret 1 H1.1

7
New 1200 4/0 ACSR
New 1 40-4 CEDAR SET 7' DEEP
New 1 C1.11P
New 1 H1.1

6
New 1204 4/0 ACSR
New 1 40-4 CEDAR SET 7' DEEP
New 1 A5.3
New 1 C1.11P
New 1 E1.1
New 1 F2.8
New 1 H1.1
New 1 S1.01 25T FUSE-A PHASE
Ret 1017 1/0 ACSR
Ret 338 2 ACSR
Ret 1 35-5
Ret 1 A5.3
Ret 1 C1.11P
Ret 1 E1.1
Ret 1 F2.8
Ret 1 H1.1
Ret 1 S1.01

76-000-08-02300
19594 295TH AVE



5
New 1204 4/0 ACSR
New 1 40-4 CEDAR
New 1 C1.11P
New 1 H1.1

102
Ret 969 1/0 ACSR
Ret 323 2 ACSR
Ret 1 35-5
Ret 1 C1.11P
Ret 1 H1.1



84.2
Ext 1 G10-15 F9269
New 1 35-5
New 604 4 ACSR
New 1 A5.1
New 2 E1.1
New 2 F2.8
New 1 H1.1
New 1 K15L
Ret 1 35-6
Ret 630 4 ACSR
Ret 1 A5.1
Ret 1 E1.1
Ret 1 F2.8
Ret 1 H1.1
Ret 1 K15L

166.1
Ret 1 35-6
Ret 214 4 ACSR
Ret 1 A2.21

166
Ret 1 35-5
Ret 1 A5.21
Ret 1 C2.24
Ret 1 E1.1
Ret 1 H1.1
Ret 1 S1.01

85
Ext 849 1/0 ACSR
Ext 283 2 ACSR
New 1 40-4 CEDAR
New 1 C1.11P
New 1 H1.1

84
Ext 849 1/0 ACSR
Ext 283 2 ACSR
New 1 40-4 CEDAR
New 1 A5.21
New 1 C1.11P
New 1 E1.1
New 1 F6.6
New 1 H1.1
New 1 S1.01 25T FUSE-B PHASE

84.1
New 1 35-5
New 210 4 ACSR
New 1 A2.21

83
New 1132 4/0 ACSR
New 1 40-2 CEDAR
New 1 A1.01P
New 1 C5.71L.8P
New 4 E1
New 6 E1.5
New 4 F6.6
New 1 H1.1
New 3 L1.5
New 1 L2.5

165
Ret 639 1/0 ACSR
Ret 213 2 ACSR
Ret 1 35-5
Ret 1 C1.11P
Ret 1 H1.1

164
Ret 888 1/0 ACSR
Ret 296 2 ACSR
Ret 1 35-5
Ret 1 C1.11P
Ret 1 H1.1

DEAD END STRUCTURE

163
Ret 1077 1/0 ACSR
Ret 359 2 ACSR
Ret 1 30-6
Ret 1 C1.11P
Ret 1 H1.1

82
New 1132 4/0 ACSR
New 1 40-4 CEDAR
New 1 C1.11P
New 1 H1.1

73-000-19-06600
23801 295TH AVE

CHANGE TAP TO B PHASE

295th Ave

85
166
84
165
83
164
82
163

283'ABC

283'ABC

283'ABC

283'ABC

302'B

84.1

84.2

166.1

163



295th Ave

282/ABC

280/ABC

50' CL

167

167

73-000-20-06900
24042 295TH AVE

73-000-20-06901
24062 295TH AVE

86 (1.7°)	
Ext	840 1/0 ACSR
Ext	280 2 ACSR
New	1 40-4 CEDAR
New	1 C2.21P
New	1 E1.1
New	1 F6.6
New	1 H1.1

167	
Ret	1 40-5
Ret	1 C1.11P
Ret	1 H1.1



295th Ave

107
 Ret 843 1/0 ACSR
 Ret 281 2 ACSR
 Ret 1 35-5
 Ret 1 C1.11P
 Ret 1 H1.1

106
 Ret 1236 1/0 ACSR
 Ret 412 2 ACSR
 Ret 1 40-5
 Ret 1 C1.11P
 Ret 1 H1.1

105
 Ret 1080 1/0 ACSR
 Ret 360 2 ACSR
 Ret 1 40-5
 Ret 1 C1.11P
 Ret 1 H1.1

104
 Ret 1014 1/0 ACSR
 Ret 338 2 ACSR
 Ret 1 30-6
 Ret 1 C1.11P
 Ret 1 H1.1

12
 107
 300'ABC
 11
 106
 300'ABC
 10
 105
 300'ABC
 9
 300'ABC
 104

5' OF MUCK
 12
 New 1200 4/0 ACSR
 New 1 40-4 CEDAR
 New 1 C1.11P
 New 1 H1.1

5' OF MUCK
 11
 New 1200 4/0 ACSR
 New 1 40-4 CEDAR
 New 1 C1.11P
 New 1 H1.1

**3' OF MUCK
 BRING ROCK**
 10
 New 1200 4/0 ACSR
 New 1 40-4 CEDAR
 New 1 C1.11P
 New 1 H1.1

9
 New 1200 4/0 ACSR
 New 1 40-4 CEDAR SET 8' DEEP
 New 1 C1.11P
 New 1 H1.1



110
 Ret 1071 1/0 ACSR
 Ret 357 2 ACSR
 Ret 1 30-6
 Ret 1 C1.11P
 Ret 1 H1.1

109
 Ret 687 1/0 ACSR
 Ret 229 2 ACSR
 Ret 1 35-5
 Ret 1 A5.3
 Ret 1 C1.11P
 Ret 1 E1.1
 Ret 1 F2.8
 Ret 1 H1.1
 Ret 1 S1.01

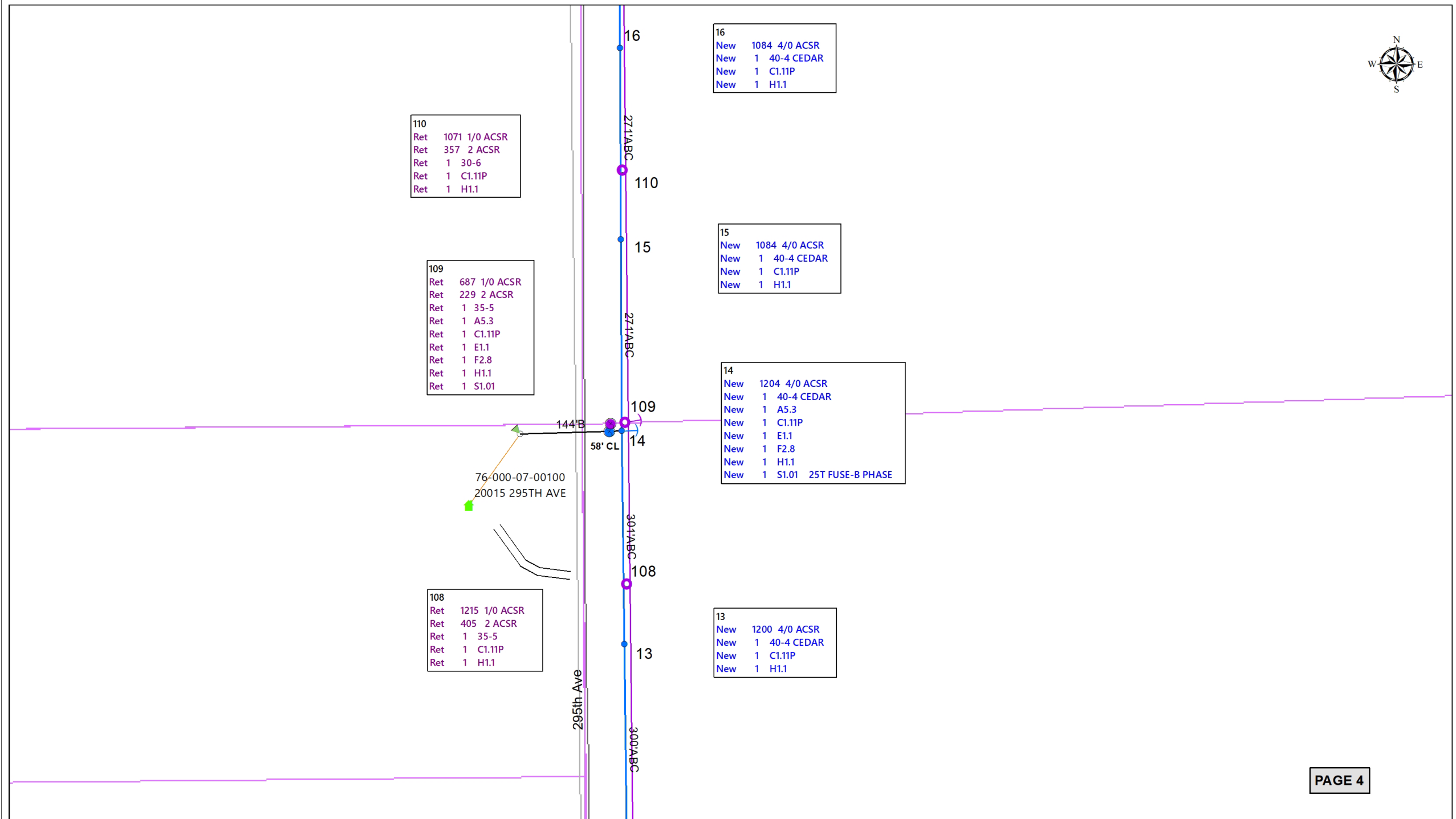
108
 Ret 1215 1/0 ACSR
 Ret 405 2 ACSR
 Ret 1 35-5
 Ret 1 C1.11P
 Ret 1 H1.1

16
 New 1084 4/0 ACSR
 New 1 40-4 CEDAR
 New 1 C1.11P
 New 1 H1.1

15
 New 1084 4/0 ACSR
 New 1 40-4 CEDAR
 New 1 C1.11P
 New 1 H1.1

14
 New 1204 4/0 ACSR
 New 1 40-4 CEDAR
 New 1 A5.3
 New 1 C1.11P
 New 1 E1.1
 New 1 F2.8
 New 1 H1.1
 New 1 S1.01 2ST FUSE-B PHASE

13
 New 1200 4/0 ACSR
 New 1 40-4 CEDAR
 New 1 C1.11P
 New 1 H1.1





20
New 1140 4/0 ACSR
New 1 40-4 CEDAR
New 1 C1.11P
New 1 H1.1

113
Ret 684 1/0 ACSR
Ret 228 2 ACSR
Ret 1 35-5
Ret 1 C1.11P
Ret 1 H1.1

19
New 1080 4/0 ACSR
New 1 40-4 CEDAR
New 1 A6.21
New 1 C2.24P
New 2 E1.5
New 1 H1.1
New 1 S1.01 25T FUSE-B PHASE
New 1 S1.01 25T FUSE-C PHASE
Ret 933 1/0 ACSR
Ret 311 2 ACSR
Ret 1 40-4
Ret 1 A6.1
Ret 1 C2.24P
Ret 1 H1.1
Ret 2 S1.01

18
New 1084 4/0 ACSR
New 1 40-4 CEDAR
New 1 A1.01P
New 1 C5.71L8P
New 4 E1
New 6 E1.5
New 4 F6.6
New 1 H1.1
New 3 L1.5
New 1 L2.5
New 1 Pole Band

112
Ret 993 1/0 ACSR
Ret 331 2 ACSR
Ret 1 35-5
Ret 1 C1.11P
Ret 1 H1.1

17
New 1084 4/0 ACSR
New 1 40-4 CEDAR
New 1 C1.11P
New 1 H1.1

111
Ret 1026 1/0 ACSR
Ret 342 2 ACSR
Ret 1 35-5
Ret 1 C1.11P
Ret 1 H1.1

76-000-06-01700
29416 203RD STREET

76-000-06-01701
NEXT TO 29416 203RD ST

203rd St

49' CL

289'ABC

270'ABC

271'ABC

271'ABC

271'ABC

295th Ave

20

113

19

18

112

17

111

DEAD END STRUCTURE



24
New 1140 4/0 ACSR
New 1 40-4 CEDAR
New 1 C1.11P
New 1 H1.1

116
Ret 1059 1/0 ACSR
Ret 353 2 ACSR
Ret 1 30-6
Ret 1 C1.11P
Ret 1 H1.1

23
New 1140 4/0 ACSR
New 1 40-4 CEDAR
New 1 C1.11P
New 1 H1.1

115
Ret 1038 1/0 ACSR
Ret 346 2 ACSR
Ret 1 30-6
Ret 1 C1.11P
Ret 1 H1.1

22
New 1140 4/0 ACSR
New 1 40-4 CEDAR
New 1 C1.11P
New 1 H1.1

114
Ret 1092 1/0 ACSR
Ret 364 2 ACSR
Ret 1 30-6
Ret 1 C1.11P
Ret 1 H1.1

21
New 1140 4/0 ACSR
New 1 40-4 CEDAR
New 1 C1.11P
New 1 H1.1



28
New 1204 4/0 ACSR
New 1 40-4 CEDAR
New 1 A5.3
New 1 C1.11P
New 1 E1.1
New 1 F2.8
New 1 H1.1
New 1 S1.01 25T FUSE- C PHASE
Ret 903 1/0 ACSR
Ret 301 2 ACSR
Ret 1 35-5
Ret 1 A5.3
Ret 1 C1.11P
Ret 1 E1.1
Ret 1 F2.8
Ret 1 H1.1
Ret 1 S1.01

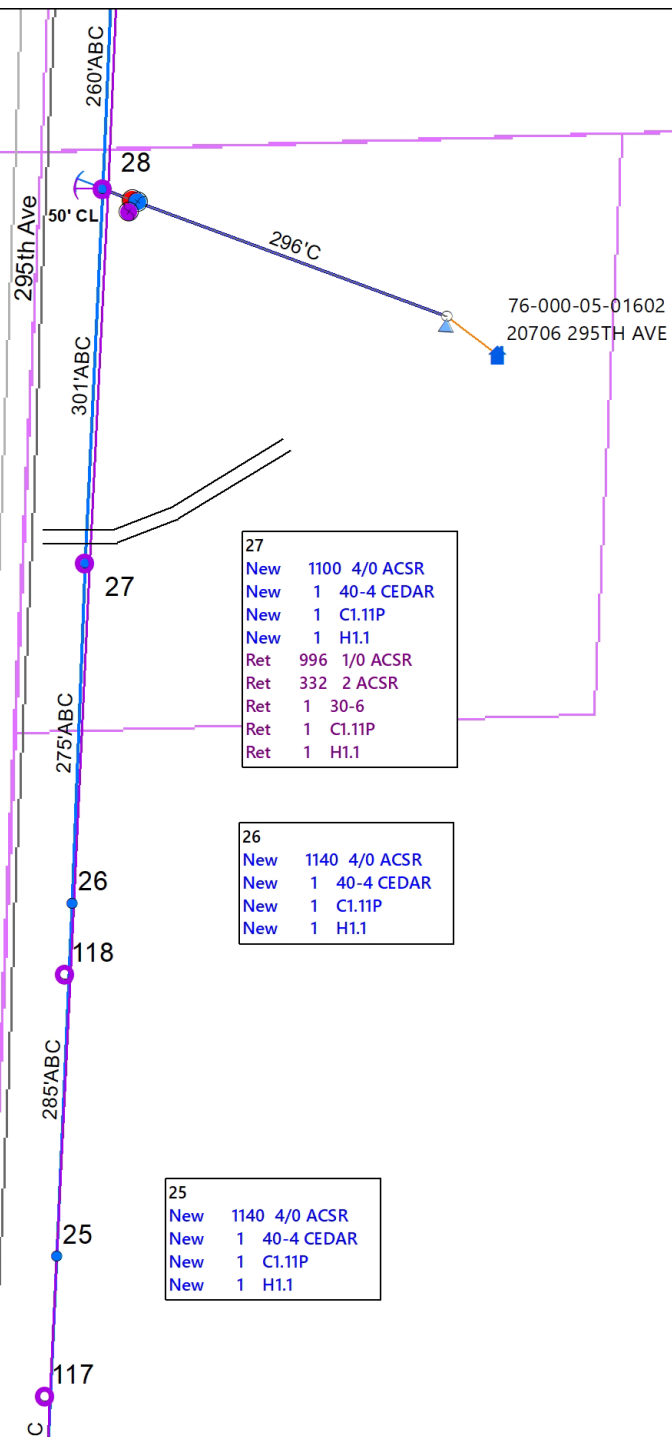
118
Ret 1023 1/0 ACSR
Ret 341 2 ACSR
Ret 1 30-6
Ret 1 C1.11P
Ret 1 H1.1

117
Ret 921 1/0 ACSR
Ret 307 2 ACSR
Ret 1 30-6
Ret 1 C1.11P
Ret 1 H1.1

27
New 1100 4/0 ACSR
New 1 40-4 CEDAR
New 1 C1.11P
New 1 H1.1
Ret 996 1/0 ACSR
Ret 332 2 ACSR
Ret 1 30-6
Ret 1 C1.11P
Ret 1 H1.1

26
New 1140 4/0 ACSR
New 1 40-4 CEDAR
New 1 C1.11P
New 1 H1.1

25
New 1140 4/0 ACSR
New 1 40-4 CEDAR
New 1 C1.11P
New 1 H1.1





121
 Ret 1065 1/0 ACSR
 Ret 355 2 ACSR
 Ret 1 35-5
 Ret 1 C1.11P
 Ret 1 H1.1

32
 New 1216 4/0 ACSR
 New 1 40-4 CEDAR
 New 1 C1.11P
 New 1 H1.1

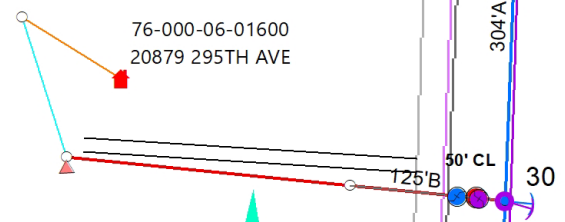
120
 Ret 1077 1/0 ACSR
 Ret 359 2 ACSR
 Ret 1 35-5
 Ret 1 C1.11P
 Ret 1 H1.1

31
 New 1216 4/0 ACSR
 New 1 40-4 CEDAR
 New 1 C1.11P
 New 1 H1.1

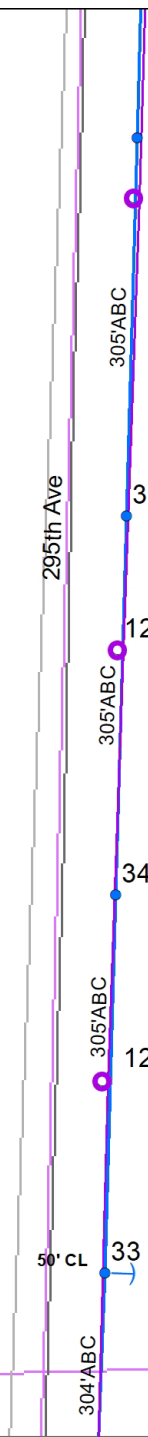
30
 New 1036 4/0 ACSR
 New 1 40-4 CEDAR SET 8' DEEP
 New 1 A5.21
 New 1 C1.11P
 New 1 E1.1
 New 1 F2.8
 New 1 H1.1
 New 1 S1.01 25T FUSE-B PHASE
 Ret 732 1/0 ACSR
 Ret 244 2 ACSR
 Ret 1 40-5
 Ret 1 A5.21
 Ret 1 C1.11P
 Ret 1 E1.1
 Ret 1 F1.8
 Ret 1 H1.1
 Ret 1 S1.01

119
 Ret 825 1/0 ACSR
 Ret 275 2 ACSR
 Ret 1 30-6
 Ret 1 C1.11P
 Ret 1 H1.1

29
 New 1040 4/0 ACSR
 New 1 40-4 CEDAR
 New 1 C1.11P
 New 1 H1.1



CHANGE TAP TO B PHASE



124
Ret 1092 1/0 ACSR
Ret 364 2 ACSR
Ret 1 35-5
Ret 1 C1.11P
Ret 1 H1.1

9' OF MUCK
NEED CULVERT

36
New 1220 4/0 ACSR
New 1 40-4 CEDAR
New 1 C1.11P
New 1 H1.1

123
Ret 1044 1/0 ACSR
Ret 348 2 ACSR
Ret 1 35-5
Ret 1 C1.11P
Ret 1 H1.1

35
New 1220 4/0 ACSR
New 1 40-4 CEDAR
New 1 C1.11P
New 1 H1.1

122
Ret 1056 1/0 ACSR
Ret 352 2 ACSR
Ret 1 35-5
Ret 1 C1.11P
Ret 1 H1.1

34
New 1220 4/0 ACSR
New 1 40-4 CEDAR
New 1 C1.11P
New 1 H1.1

33 (0.6°)
New 1216 4/0 ACSR
New 1 40-4 CEDAR
New 1 C1.11P
New 1 E1.1
New 1 F2.10
New 1 H1.1

LOCATIONS - GRID



Staked By: LUKE M KASELLA	RUS Code: 370	W/O #: 474534
Date: 1/9/2020 12:00:00AM	EXT 740 C:	LOC #: 76-000-08-02402
Signed By:	Loan Nbr: BB8	Name: SUBSTATION-LASTRUP
Date:	Loan Ywr: 2017	Acct #:
Comments 1:		

LOCATIONS - STATUS		PRIMARY CONSTRUCTION				EQUIPMENT / LIGHTS / MISCELLANEOUS			GROUNDING / GUYS / ANCHORS			SECONDARY / SERVICE CONSTRUCTION			
LOCATION	STS	TOTAL	STRUCTURE	(# WIRES)-FT-SIZE	(QTY) - UNITS	TRANSFORMER-KVA	(QTY)-EQUIPMENT	(QTY)-MISC	(QTY)-GRNDS	(QTY)-GUYS	(QTY)-ANCRS	(QTY)-UNITS	TOTAL	(# WIRES)-FT-SIZE	METERING
SUB	RET							(3.00)- L1.5							
	NEW							(3.00)- L1.5							
LAT: -94.000000		LONG: 46.000000													
	RET	240	35-4	(3)-80-1/0 ACSR	(1)- C5.21		(1)- S1.3		(1)- H1.1	(2)- E1.1					
	RET				(1)- C2.51										
	NEW	240	35-4 CEDAR	(3)-80-4/0 ACSR	(1)- C5.71L.8P		(1)- S1.3	(3.00)- L1.1	(1)- H1.1	(3)- E1	(1)- F6.6				
	NEW				(1)- C5.71L.10P			(1.00)- L2.1			(2)- F2.10				
LAT: -94.000000		LONG: 46.000000													
1.1															
	EXS	225		(3)-75-1/0 ACSR											
	EXS	112		(4)-28-1/0 ACSR											
	RET	100		(1)-100-2 ACSR											
	NEW	100		(1)-100-4/0 ACSR											
LAT: -94.000000		LONG: 46.000000													
2	NEW	604	40-2 CEDAR	(4)-151-4/0 ACSR	(1)- C5.71L.8P				(1)- H1.1	(4)- E1	(4)- F6.6				
	NEW									(1)- E1.1	(1)- F2.8				
LAT: -94.000000		LONG: 46.000000													
3	NEW	1204	40-4 CEDAR	(4)-301-4/0 ACSR	(1)- C1.11P				(1)- H1.1						
LAT: -94.000000		LONG: 46.000000													
4	NEW	1204	40-4 CEDAR	(4)-301-4/0 ACSR	(1)- C1.11P				(1)- H1.1						
LAT: -94.000000		LONG: 46.000000													
5	NEW	1204	40-4 CEDAR	(4)-301-4/0 ACSR	(1)- C1.11P				(1)- H1.1						
LAT: -94.000000		LONG: 46.000000													