



74-000-19-07400
23383 360TH AVE
74-000-19-07401
NEXT TO 23383 360TH AVE

1	1434	4/0	25KV	STR
Ext	1			UM33
Ext	1			UM48-2
Ext	4			UM6-1
Ext	5			UM6-10-25
Ext	3			UM6-22-25
New	3			UM6-1
Ret	3			UM6-1

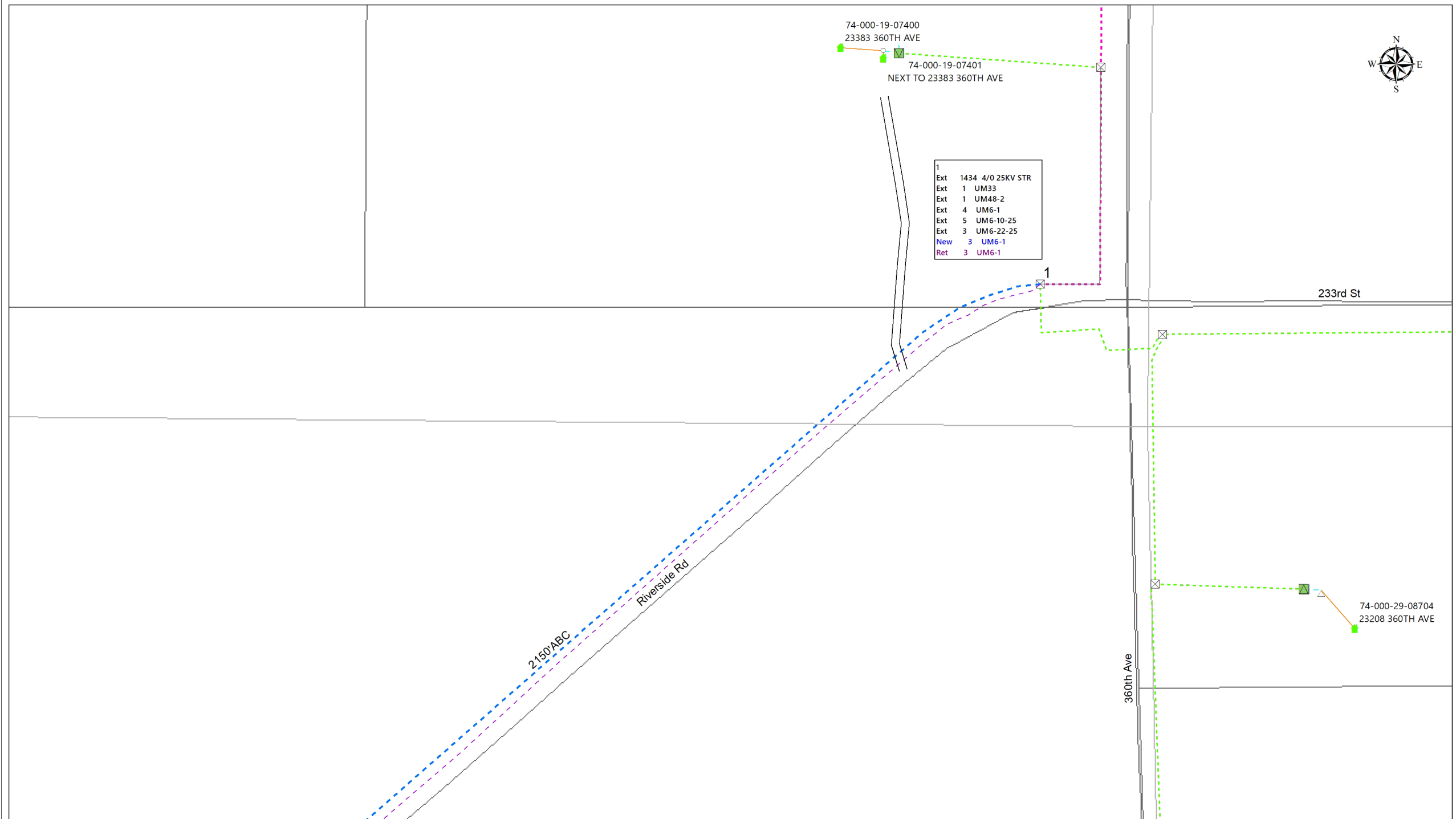
233rd St

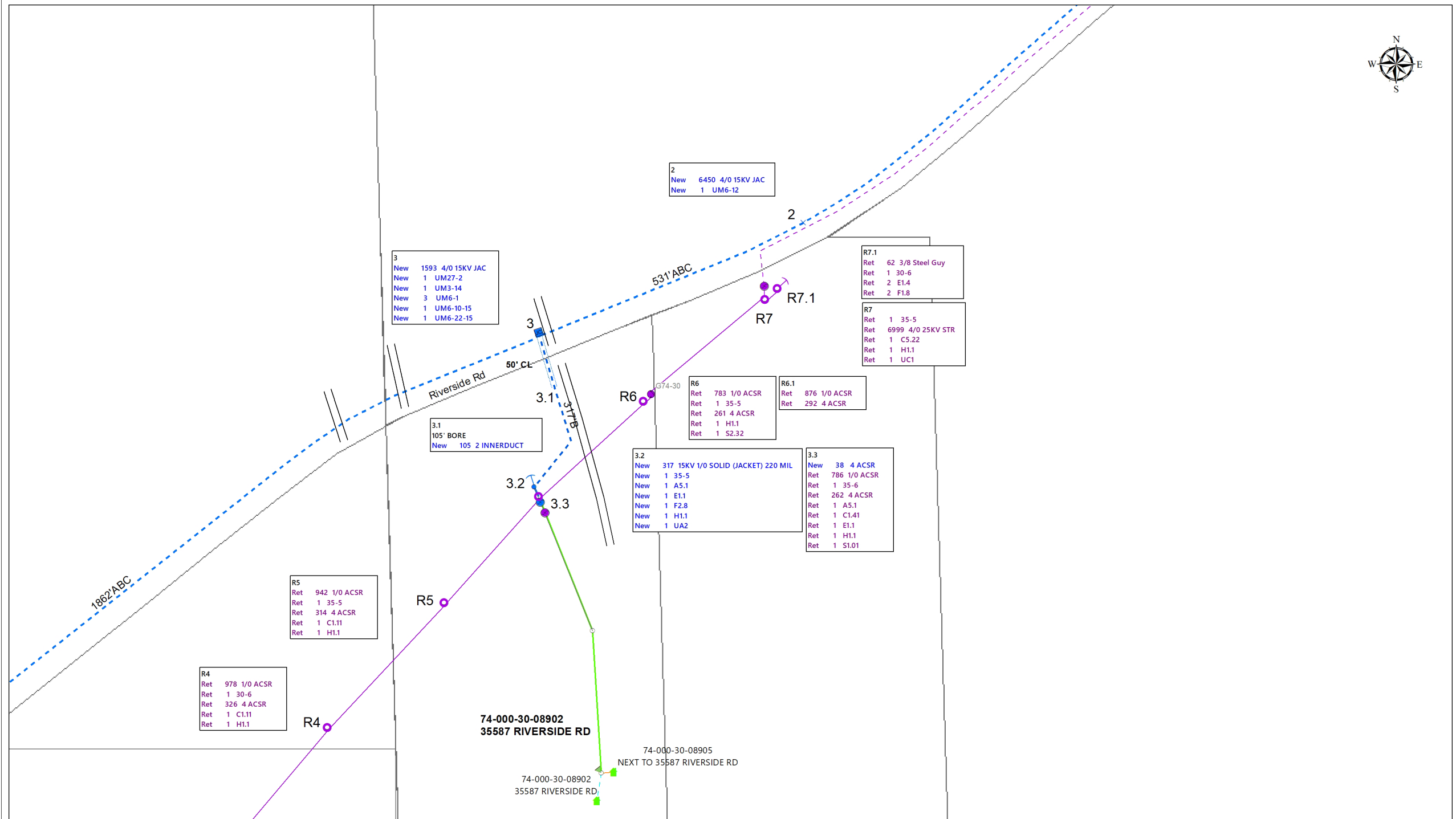
2150/ABC

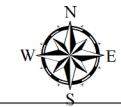
Riverside Rd

360th Ave

74-000-29-08704
23208 360TH AVE







NEW OPEN POINT BETWEEN LASTRUP AND PINE CENTER SUBS (G74-30)

4
New 5586 4/0 15KV JAC
New 1 UM27-2
New 1 UM3-14
New 3 UM6-1
New 1 UM6-10-15
New 1 UM6-22-15

4.1
100' BORE
New 100 2 INNERDUCT

R3
Ret 966 1/0 ACSR
Ret 1 30-6
Ret 322 4 ACSR
Ret 1 C1.11
Ret 1 H1.1

5
48' CL
Ext 897 1/0 ACSR
Ext 299 4 ACSR
New 1161 4/0 15KV JAC
New 1 40-4 CEDAR
New 1 C5.71L8P
New 4 E1
New 4 F2.10
New 1 Pole BandON NEUTRAL
New 1 S2.32UG G74-30

5.1
Ret 1 40-5
Ret 1 C2.24
Ret 1 H1.1

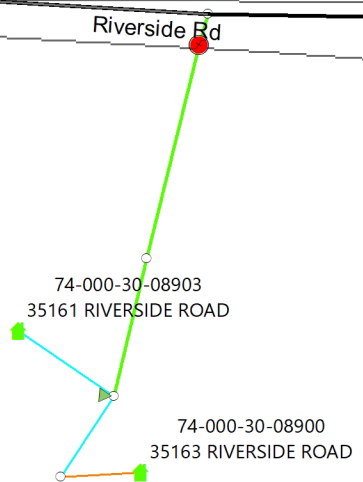
5.2
Ret 897 1/0 ACSR
Ret 299 4 ACSR
Ret 1 40-5
Ret 1 C2.24
Ret 1 H1.1

R1
Ret 948 1/0 ACSR
Ret 1 35-6
Ret 237 4 ACSR
Ret 1 C1.11
Ret 1 H1.1

R2
Ret 1053 1/0 ACSR
Ret 1 35-5
Ret 351 4 ACSR
Ret 1 C3.1
Ret 2 E1.1
Ret 2 F2.8
Ret 1 H1.1

4.2
New 187 15KV 1/0 SOLID (JACKET) 220 MIL
New 1 TRANSFORMER PAD
New 1 UG7-15
New 1 UM27-2
New 1 UM6-1
New 1 UM6-34

4.3
Ext 1 F2.8
New 10 2 INNERDUCT
New 1 30-6
New 10 4/0 USE
New 1 E1.1
New 1 H1.1
New 1 K15L
New 1 UM5
Ret 588 1/0 ACSR
Ret 1 35-6
Ret 196 4 ACSR
Ret 1 C1.11
Ret 1 E1.1
Ret 1 G10-10 BA9005
Ret 1 H1.1
Ret 1 K15L



74-000-30-08904
35297 RIVERSIDE RD

48' CL

5

5.1

387'ABC

4

50' CL

4.2

4.3

R1

R2

R3

5.2

4.2

4.3