

1
Ext 662 4 ACSR
Ext 1 40-5
Ext 1 A5.1
Ext 1 A6.2
Ext 1 E1.1
Ext 1 H1.1
Ext 1 S1.1
Ext 1 F1.8
New 1 L1.5
New 1 L2.5
Ret 1 E1.1
Ret 1 F1.8
Ret 1 L1.5
Ret 1 L2.5

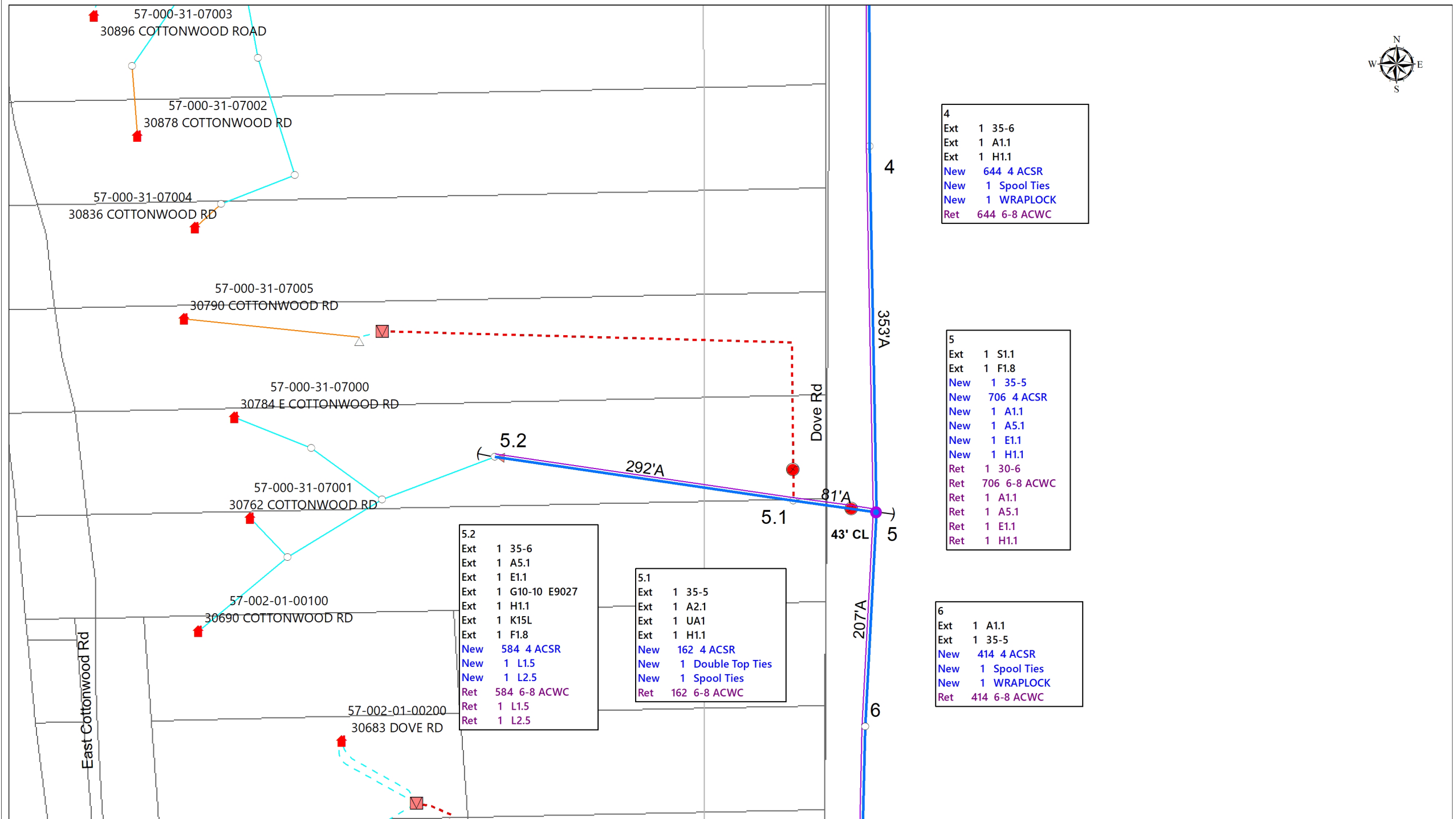
2
Ext 1 A1.1
Ext 1 35-5
New 566 4 ACSR
New 1 Spool Ties
New 1 WRAPLOCK
Ret 566 6-8 ACWC

3.2
Ext 1 40-5
Ext 1 A2.3
Ext 1 E1.1
Ext 1 G9-15 R9441
Ext 1 H1.1
Ext 1 K15L
Ext 1 F1.8
New 682 4 ACSR
New 1 Double Side Ties
New 1 Spool Ties
Ret 682 6-8 ACWC

3.3
Ext 1 35-5
Ext 1 G10-15 N9287
Ext 1 A5.1
Ext 2 E1.1
Ext 2 F2.8
Ext 1 K15L
Ext 1 UM5
New 234 4 ACSR
Ret 234 6-8 ACWC

3.1
Ext 1 35-5
Ext 1 A2.3
Ext 1 E1.1
Ext 1 F1.8
New 592 4 ACSR
New 1 Double Side Ties
New 1 Spool Ties
Ret 592 6-8 ACWC

3
Ext 1 40-5
Ext 1 A1.1
Ext 1 A5.1
Ext 1 E1.1
Ext 1 H1.1
Ext 1 S1.1
Ext 1 F2.8
New 456 4 ACSR
New 1 Spool Ties
New 1 WRAPLOCK
Ret 456 6-8 ACWC



East Cottonwood Rd

Dove Rd

57-000-31-07003
30896 COTTONWOOD ROAD

57-000-31-07002
30878 COTTONWOOD RD

57-000-31-07004
30836 COTTONWOOD RD

57-000-31-07005
30790 COTTONWOOD RD

57-000-31-07000
30784 E COTTONWOOD RD

57-000-31-07001
30762 COTTONWOOD RD

57-002-01-00100
30690 COTTONWOOD RD

57-002-01-00200
30683 DOVE RD

5.2
Ext 1 35-6
Ext 1 A5.1
Ext 1 E1.1
Ext 1 G10-10 E9027
Ext 1 H1.1
Ext 1 K15L
Ext 1 F1.8
New 584 4 ACSR
New 1 L1.5
New 1 L2.5
Ret 584 6-8 ACWC
Ret 1 L1.5
Ret 1 L2.5

5.1
Ext 1 35-5
Ext 1 A2.1
Ext 1 UA1
Ext 1 H1.1
New 162 4 ACSR
New 1 Double Top Ties
New 1 Spool Ties
Ret 162 6-8 ACWC

4
Ext 1 35-6
Ext 1 A1.1
Ext 1 H1.1
New 644 4 ACSR
New 1 Spool Ties
New 1 WRAPLOCK
Ret 644 6-8 ACWC

5
Ext 1 S1.1
Ext 1 F1.8
New 1 35-5
New 706 4 ACSR
New 1 A1.1
New 1 A5.1
New 1 E1.1
New 1 H1.1
Ret 1 30-6
Ret 706 6-8 ACWC
Ret 1 A1.1
Ret 1 A5.1
Ret 1 E1.1
Ret 1 H1.1

6
Ext 1 A1.1
Ext 1 35-5
New 414 4 ACSR
New 1 Spool Ties
New 1 WRAPLOCK
Ret 414 6-8 ACWC

5.2

292'A

5.1

81'A

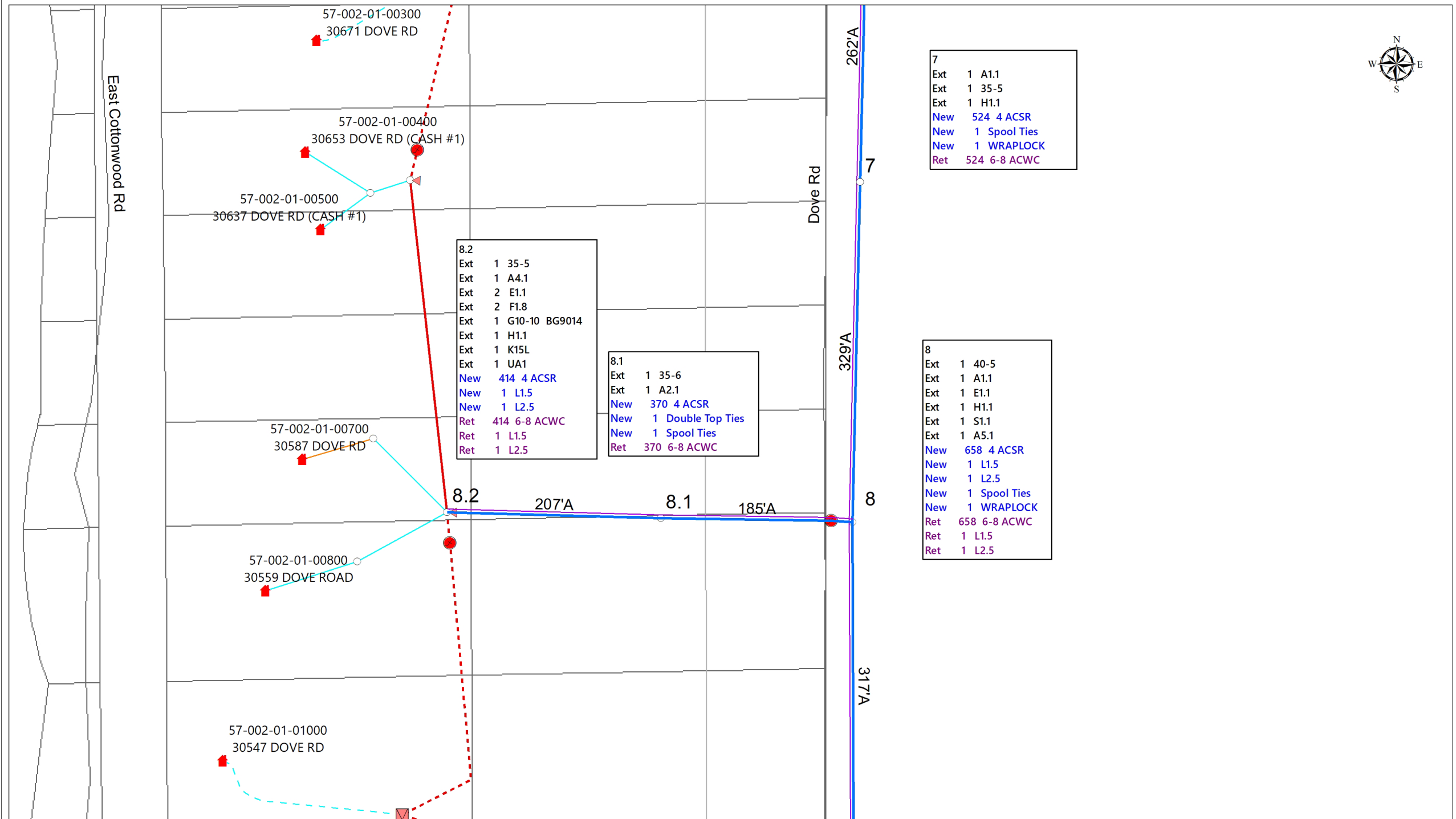
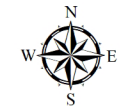
43' CL

5

353'A

207'A

6

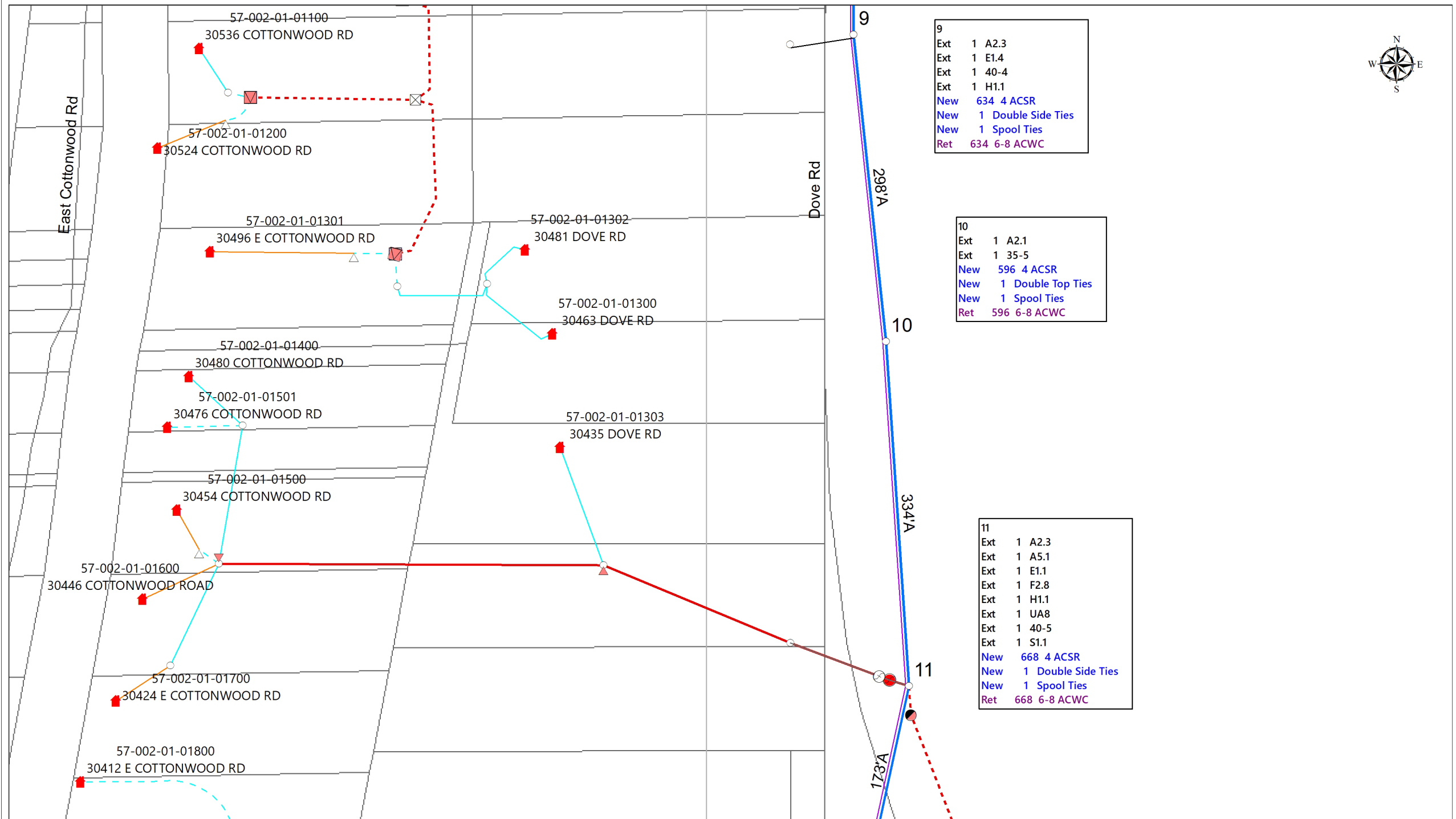
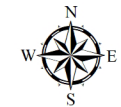


7
Ext 1 A1.1
Ext 1 35-5
Ext 1 H1.1
New 524 4 ACSR
New 1 Spool Ties
New 1 WRAPLOCK
Ret 524 6-8 ACWC

8.2
Ext 1 35-5
Ext 1 A4.1
Ext 2 E1.1
Ext 2 F1.8
Ext 1 G10-10 BG9014
Ext 1 H1.1
Ext 1 K15L
Ext 1 UA1
New 414 4 ACSR
New 1 L1.5
New 1 L2.5
Ret 414 6-8 ACWC
Ret 1 L1.5
Ret 1 L2.5

8.1
Ext 1 35-6
Ext 1 A2.1
New 370 4 ACSR
New 1 Double Top Ties
New 1 Spool Ties
Ret 370 6-8 ACWC

8
Ext 1 40-5
Ext 1 A1.1
Ext 1 E1.1
Ext 1 H1.1
Ext 1 S1.1
Ext 1 A5.1
New 658 4 ACSR
New 1 L1.5
New 1 L2.5
New 1 Spool Ties
New 1 WRAPLOCK
Ret 658 6-8 ACWC
Ret 1 L1.5
Ret 1 L2.5

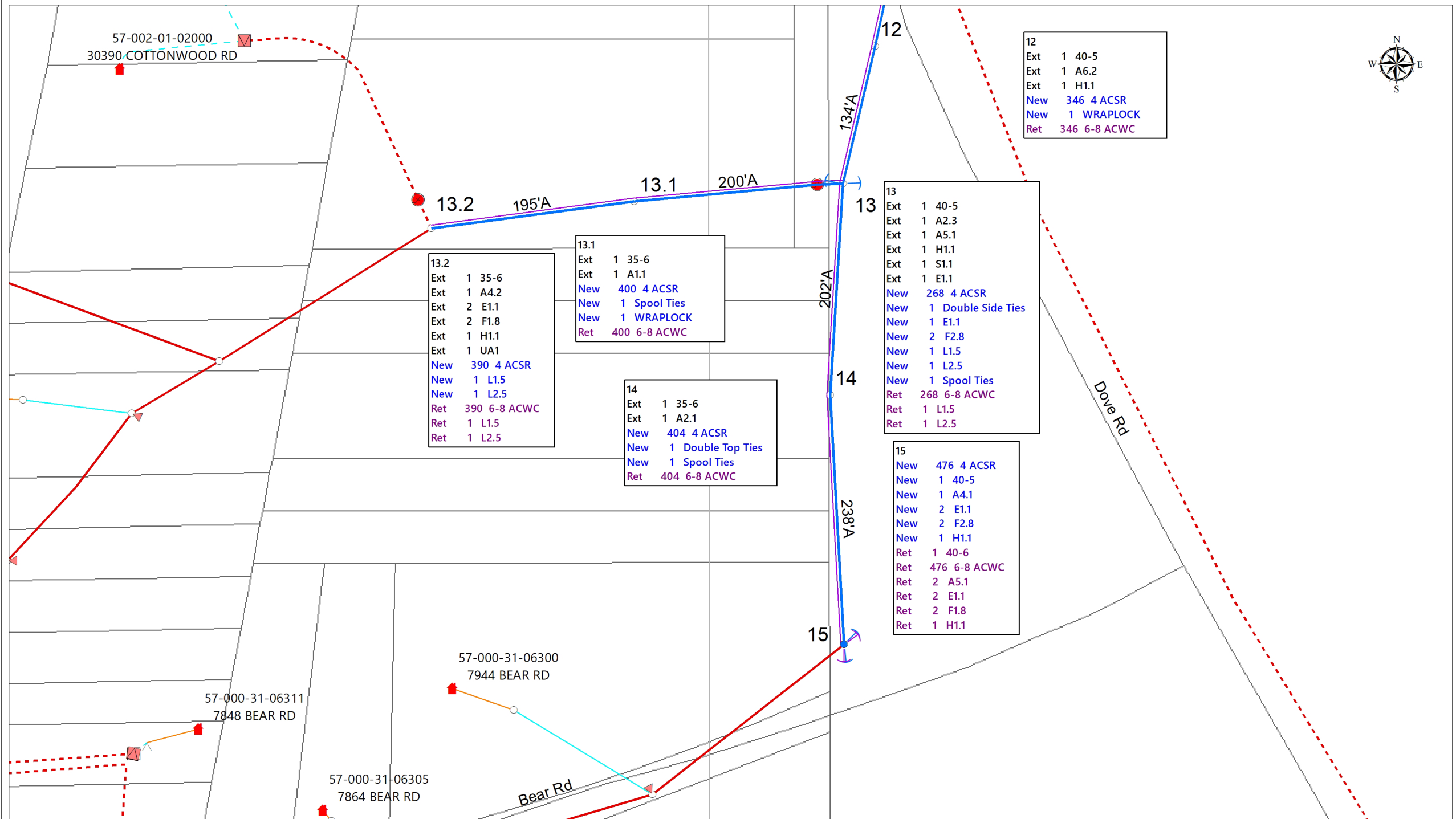
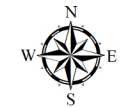


9		
Ext	1	A2.3
Ext	1	E1.4
Ext	1	40-4
Ext	1	H1.1
New	634	4 ACSR
New	1	Double Side Ties
New	1	Spool Ties
Ret	634	6-8 ACWC

10		
Ext	1	A2.1
Ext	1	35-5
New	596	4 ACSR
New	1	Double Top Ties
New	1	Spool Ties
Ret	596	6-8 ACWC

11		
Ext	1	A2.3
Ext	1	A5.1
Ext	1	E1.1
Ext	1	F2.8
Ext	1	H1.1
Ext	1	UA8
Ext	1	40-5
Ext	1	S1.1
New	668	4 ACSR
New	1	Double Side Ties
New	1	Spool Ties
Ret	668	6-8 ACWC

298'A
334'A
173'A



57-002-01-02000
30390.COTTONWOOD RD

13.2

Ext	1	35-6
Ext	1	A4.2
Ext	2	E1.1
Ext	2	F1.8
Ext	1	H1.1
Ext	1	UA1
New	390	4 ACSR
New	1	L1.5
New	1	L2.5
Ret	390	6-8 ACWC
Ret	1	L1.5
Ret	1	L2.5

13.1

Ext	1	35-6
Ext	1	A1.1
New	400	4 ACSR
New	1	Spool Ties
New	1	WRAPLOCK
Ret	400	6-8 ACWC

14

Ext	1	35-6
Ext	1	A2.1
New	404	4 ACSR
New	1	Double Top Ties
New	1	Spool Ties
Ret	404	6-8 ACWC

13

Ext	1	40-5
Ext	1	A2.3
Ext	1	A5.1
Ext	1	H1.1
Ext	1	S1.1
Ext	1	E1.1
New	268	4 ACSR
New	1	Double Side Ties
New	1	E1.1
New	2	F2.8
New	1	L1.5
New	1	L2.5
New	1	Spool Ties
Ret	268	6-8 ACWC
Ret	1	L1.5
Ret	1	L2.5

12

Ext	1	40-5
Ext	1	A6.2
Ext	1	H1.1
New	346	4 ACSR
New	1	WRAPLOCK
Ret	346	6-8 ACWC

15

New	476	4 ACSR
New	1	40-5
New	1	A4.1
New	2	E1.1
New	2	F2.8
New	1	H1.1
Ret	1	40-6
Ret	476	6-8 ACWC
Ret	2	A5.1
Ret	2	E1.1
Ret	2	F1.8
Ret	1	H1.1

57-000-31-06311
7848 BEAR RD

57-000-31-06300
7944 BEAR RD

57-000-31-06305
7864 BEAR RD

Bear Rd

Dove Rd

15

238'A

14

202'A

134'A

12

200'A

13.1

195'A

13.2