

CONSTRUCTION NOTES

Obtain Construction Plans from Designer prior to starting job. They are located in documents in the electronic folder.

Coordinate with Contractor / Engineering Firm for exact locations of proposed structures and facilities prior to installation of gas facilities. Contact Bill Zidon, SEH, 701-360-2390.

Install new main as shown or as directed in field at time of installation.

Long side mains and services to be installed below proposed sub-cuts (See Construction Plans).

All test points should be installed in the boulevard or other acceptable locations and avoid placement in driving lanes.

Verify Coating test results if required prior to abandoning main.

CONSTRUCTION PROCEDURES

Install: Clean and Test; and Put in Service; Proposed new main per CenterPoint Energy Construction and Services Manual.

Procedure for tapping or making tie-ins to existing gas mains: Verify existing gas main size, type, and location prior to tapping or making tie-in. Monitor and verify, using a pressure gauge, existing gas main Pressure Class within the bell hole of tap location or tie-in location prior to tapping or making tie-in.

Purge new main until essentially 100% reading is obtained on Combustible Gas Indicator. See CenterPoint Energy Construction and Service Manual Section CS-B-1.230 for purging mains into service.

Complete all Service / Meter Work as directed. (See Service Survey)

See Abandonment Procedures for abandonment and purging procedures.

Install a marker ball at a new end of main, at a valve, at each end of a horizontal offset, at road crossings and at any fitting or pressure control identified as needing to be located in the future. Refer to CenterPoint Energy Construction and Service Manual section CS-B-1.310 for installation procedures.

ABANDONMENT PROCEDURES

See Construction Procedures for installation of mains and services prior to abandonments.

This project includes work on one-way feed mains. Ensure all proposed main is in service, all taps are completed and all services have been transferred to new main prior to abandonments.

Cut and Abandon existing main as shown. Purge abandoned mains until essentially 0% gas reading is obtained on Combustible Gas Indicator. See CenterPoint Energy Construction and Service Manual Section CS-B-1.110 and Section CS-B-1.230 for purging mains out of service using air movers.

Contact Engineering with questions.

PARTS OF PROJECT JOINT TRENCH WITH MN POWER, MID-CONTINENT & LUMEN (FORMERLY CENTURYLINK), ALL PAVED STREETS AND DRIVEWAYS SHOULD BE BORED. Minimum depth requirements for crossings of state highways and county roads is 60". Minimum depth requirements for crossings of city streets and township roads is 48". Minimum depth for parallel installations on state highways and county roads is 36". Minimum depth for parallel installations on city streets and township roads is 30". All steel pipe welds to be coated with 2 part epoxy.

Pipe < 4-inches Diameter (Unregulated PCB area): Project area cleared for internal impacts. Pipe being removed is unregulated for disposal if coating does not exist or is non-asbestos. Refer to CNP Construction and Service Manual CS-B-1.110, CS-B-1.330, and CS-B-1.100, for pipe to be abandoned.

CORROSION TECH FOR AREA IS
ANDREW KLEVE, CELL 612-441-1213

CP TEST POINT WITH ANODE
AND PLASTIC PIPE LOCATING STATION
ROADWAY INSTALLATION

LOCATING/TRACER WIRE — PIPES

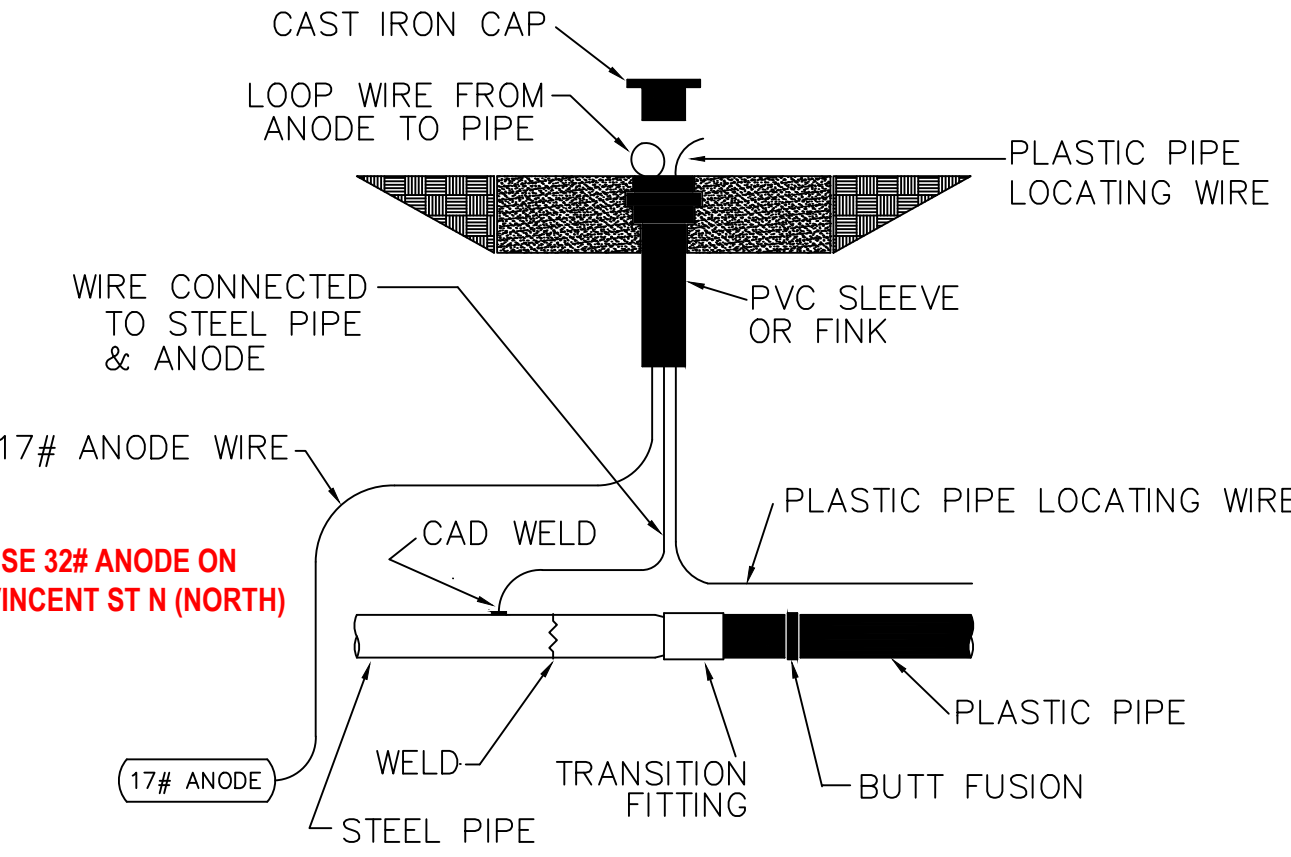
Solid 12 THHN copper tracer wire shall be buried with all plastic pipes.

NOTE: Whenever tracer wires are joined together or connected to plastic pipes or services, the connections shall be coated with moldable sealant/tape.

Tracer wire shall also be terminated with plastic pipes when inserting inside

Where steel pipes and plastic pipe are joined together, the tracer wire will be terminated in a test box as shown in the drawing below. A separate 12 THHN copper wire will be connected to the steel pipe and also terminated in the same test box with the tracer wire.

NOTE:
1. Install roadway cap at final grade.
2. Allow a minimum of 10" of slack in test wires.



LEGEND:
— ACTIVE MAIN
— DESIGNED MAIN
— PROPOSED ABANDONED/
OUT OF SERVICE MAIN
— ABANDONED/
OUT OF SERVICE MAIN

PIPE REQUIRED:
2282' 2" STL CL-5
331' 4" PE CL-6
1805' 4" PE CL-5
4398' PIPE

PROPOSED ABANDONED PIPE:
2201' 2" STL CL-5
311' 4" TR CL-6
1190' 2" TR CL-5
1771' 3" TR CL-5
140' 1 1/4" STL CL-5
5613' PIPE

COPIES:
PIPELINE INTEGRITY PACKET: N
STATION MANAGER: N
DD NUMBER:
CORROSION: ANDREW KLEVE
EMP: N

FOLLOW INTERNAL PIPE
SAMPLING REQUIREMENTS? N

SURVEYOR REQUIRED? N

RETURN PACKET TO ENG? N

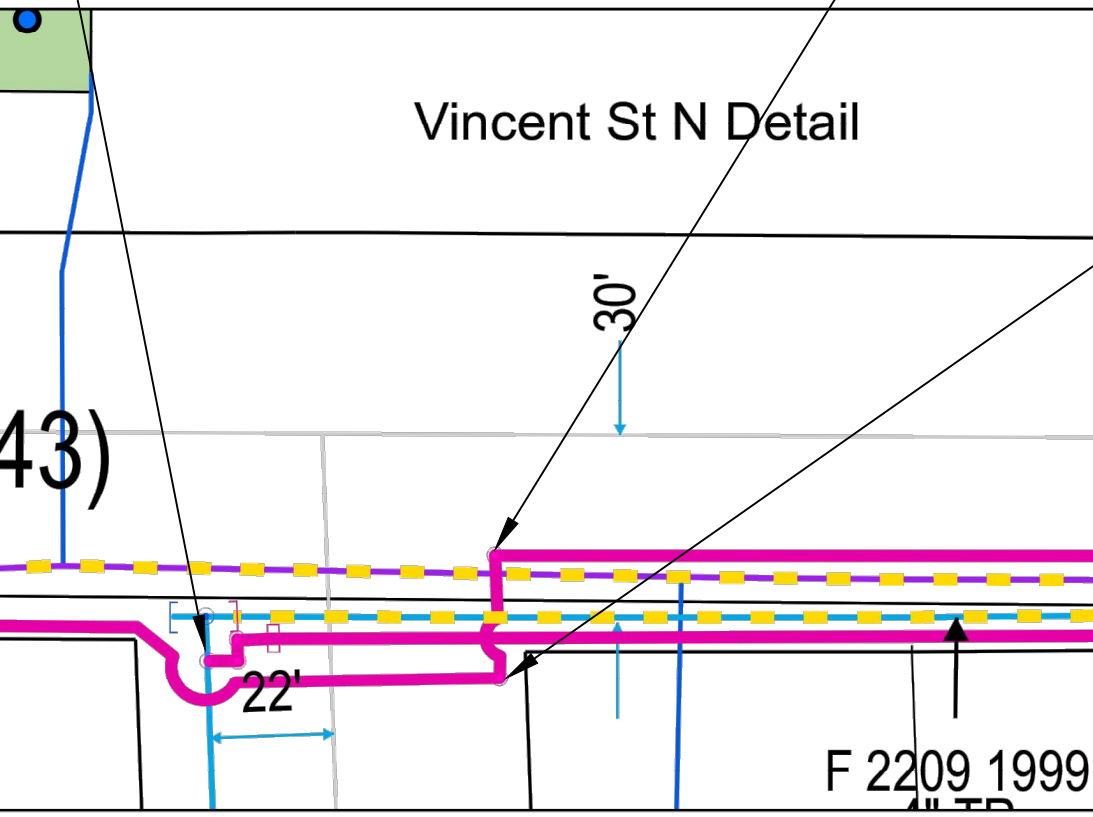
GFIP #:

PERMITS: CITY OF PIERZ
MORRISON COUNTY
MNDOT
BUH TOWNSHIP
NOTIFICATION

PROJECT DESCRIPTION: SREL
3rd Ave NW - Pierz
DESIGNER: Maura Klimisch
PHONE #: 612-321-5319
DRAWN BY: Maura Klimisch
DESIGN DATE: 1/6/2021

REVISION INFO:

Main
SSR 66-2020
SCALE: 1"=100'
SHEET 1 OF 2



F 2209 1999

43)

22'

30'

43)

22'

30'

43)

22'

30'

43)

22'

30'

43)

22'

30'

43)

22'

30'

43)

22'

30'

43)

22'

30'

43)

22'

30'

43)

22'

30'

43)

22'

30'

43)

22'

30'

43)

22'

30'

43)

22'

30'

43)

22'

30'

43)

22'

30'

43)

22'

30'

43)

22'

30'

43)

22'

30'

43)

22'

30'

43)

22'

30'

43)

22'

30'

43)

22'

30'

43)

22'

30'

43)

22'

30'

43)

22'

30'

43)

22'

30'

43)

22'

30'

43)

22'

30'

43)

22'

30'

43)

22'

30'

43)

22'

30'

43)

22'

30'

43)

22'

30'

43)

22'

30'

43)

22'

30'

43)

22'

30'

43)

22'

30'

43)

22'

30'

43)

22'

30'

43)

22'

30'

43)

22'

30'

43)

22'

30'

43)

22'

30'

43)

22'

30'

43)

22'

30'

43)

22'

30'

43)

22'

30'

43)

22'

30'

43)

22'

30'

43)

22'

30'

43)

22'

30'

43)

22'

30'

43)

22'

30'

43)

22'

30'

43)

22'

30'

43)

22'

30'

43)

22'

30'

43)

22'

30'

43)

22'

30'

43)

22'

30'

43)

22'

30'

43)

22'

30'

43)

22'

30'

43)

22'

30'

43)

22'

30'

43)

22'

30'

43)

22'

30'

43)

22'

30'

43)

22'

30'

43)

22'

30'

43)

22'

30'

43)

22'

30'

43)

22'

30'

43)

22'

30'

43)

22'

30'

43)

22'

30'

43)

22'

30'

43)

22'

30'

43)

22'

30'

43)

22'

30'

43)

22'

30'

43)

22'

30'

43)

22'

30'

43)

22'

30'

43)

22'

30'