

CITY OF PIERZ, MN - MORRISON COUNTY

2021 CSAH 43 & 39 RECONSTRUCTION AND SRTS

LOCATED ON CSAH 43 & 39 FROM CENTENNIAL DR TO KAMNIC STREET

LUMEN RELOCATION PLAN

PROJECT N.810896 / CL19.80834

PLANS PREPARED FOR

LUMEN®

LUMEN ENGINEER: BLAYNE LEUTHARD
 EMAIL: BLAYNE.LEUTHARD@LUMEN.COM
 PHONE: 320.255.8350
 LUMEN CONSTRUCTION CONTACT: BLAYNE LEUTHARD
 EMAIL: BLAYNE.LEUTHARD@LUMEN.COM
 PHONE: 320.255.8350
 WIRECENTER: PRZNMXXA

PLANS PREPARED BY



TT ENGINEER: LINDSEY KIRKHAM
 PHONE: 612.867.1145
 EMAIL: L.KIRKHAM@TERRATECHILL.COM

PROJECT CONTACT

OWNER: JOHN KOSTREBA - MORRISON COUNTY
 PHONE: 320.831.2865
 EMAIL: JOHNRK@CO.MORRISON.MN.US
 PROJECT ENGINEER: BILL ZIDON - SEH
 PHONE: 320.229.4499
 EMAIL: BZIDON@SEHINC.COM
 SURVEY/STAKING: BILL ZIDON - SEH
 PHONE: 320.229.4499
 EMAIL: BZIDON@SEHINC.COM
 ROAD CONTRACTOR: TBD
 PHONE: TBD
 EMAIL: TBD



FOR REFERENCE ONLY



NOTES:
 ALL EXISTING AND PROPOSED CONDITIONS ARE BASED ON INFORMATION PROVIDED BY OTHERS. LUMEN CANNOT BE RESPONSIBLE FOR THE ACCURACY OF INFORMATION PROVIDED BY OTHERS. FIELD VERIFICATION OF FACILITY LOCATIONS, DEPTHS AND ELEVATIONS SHOULD BE FIELD VERIFIED PRIOR TO CONSTRUCTION. PROPOSED DESIGN MODIFICATIONS ARE RECOMMENDATIONS ONLY AND SHOULD BE VERIFIED PRIOR TO CONSTRUCTION.

PERMITS REQUIRED: YES NO

CNT: PIERZ

COUNTY: MORRISON

STATE: MINNESOTA

RAILROAD:

PIPELINE:

DNR:

MISCELLANEOUS:

CUTS REQUIRED: YES NO

FIBER OPTIC

COPPER

MIGRATIONS REQUIRED: YES NO

PRECONSTRUCTION MEETING DATE: TBD

EXPECTED ROADWAY CONSTRUCTION START DATE: SPRING 2021

REVISION	DATE

MINNESOTA DEPARTMENT OF TRANSPORTATION

CITY OF

PIERZ, MINNESOTA

CONSTRUCTION PLANS FOR

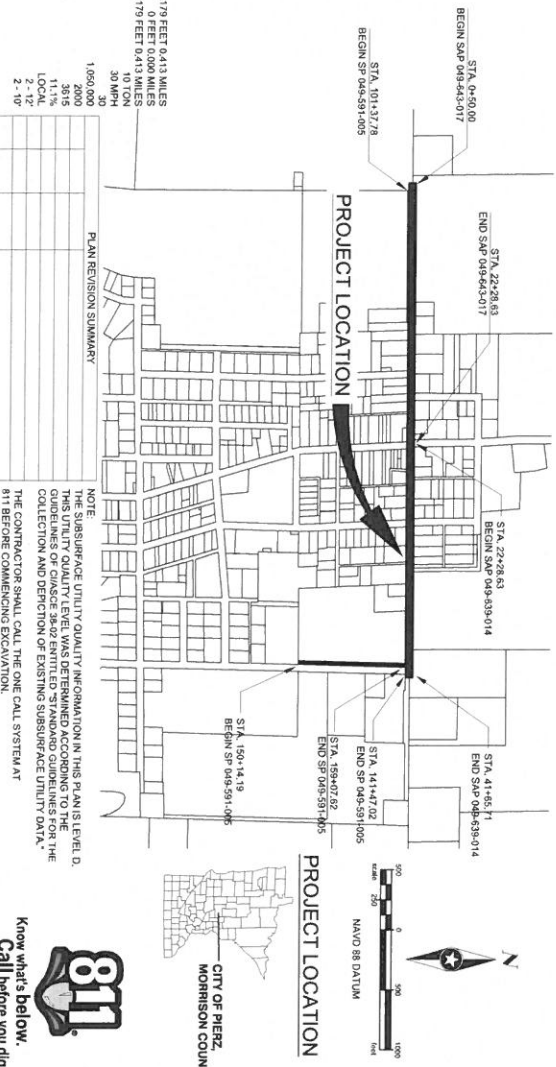
SANITARY SEWER, WATER MAIN, STORM SEWER, STREET & SIDEWALK RECONSTRUCTION, OVERLAY, AND PEDESTRIAN CROSSINGS

2021 CSAH 43 & 39 RECONSTRUCTION AND SRTS

CITY PROJECT NO. MORR156439
 SAP 049-643-017; SAP 049-639-014; SP 049-591-005

3RD AVENUE NW (CSAH 43) FROM CENTENNIAL DRIVE TO TH25, 3RD AVENUE NE (CSAH 39) FROM TH25 TO KAMNIC STREET, AND KAMNIC STREET FROM KAMNIC LANE TO 3RD AVENUE NE. LOCATED IN THE CITY OF PIERZ, MORRISON COUNTY, MINNESOTA SECTION 8 & 7, T40N, R30W AND SECTION 34 & 35, T41N, R30W

- | | | | | | | | | | | | | | | | | | | | | | | | | | | | | | | | | | | | | | | | | | | | | | | | | | | | | | | | | | |
|----------|--------------|--------------------|---------------|--------------------------|-----------|---------------|----------------------------|-----------------------------|-----------------------------------|----------------------------|-----------------------------|----------------------------|---------------------------------|----------|--------------------------------------|--|---------------------------------------|---|----------------------------------|----------------|------------------|------------------------|-----------------|-------------------------------|------------------------|---------------------|---------|----------|----------------------|-------------------|------------------|---------------------|------------|------------------|----------------------|-----------------|----------------|----------------|----------|-------------------|--------------|--------------------|--------------------|---------------------|--------------------------------------|------------|-------------------------------|--|--|--------------------------------------|--------------------------|---------------|--------|------------------|------------------------|----------------|---|
| EXISTING | RIGHT-OF-WAY | PERMANENT EASEMENT | PROPERTY LINE | HORIZONTAL CONTROL POINT | BENCHMARK | SURVEY MARKER | SANITARY SEWER AND MANHOLE | FORCE MAIN AND LIFT STATION | SANITARY SEWER SERVICE & CLEANOUT | WATER MAIN AND CATCH BASIN | STORM SEWER AND CATCH BASIN | CULVERT AND ABRON DRAINAGE | GAS MAIN, VALVE, VENT AND METER | HANDHOLE | BURNED FIBER OPTIC CABLE AND MANHOLE | BURNED PHONE CABLE, PEDESTAL AND MANHOLE | BURNED TV CABLE, PEDESTAL AND MANHOLE | BURNED ELECTRIC CABLE, PEDESTAL, MANHOLE, TRANSFORMER AND METER | 0" LIGHT POLE, POLE AND GUY WIRE | TRAFFIC SIGNAL | STREET NAME SIGN | SIGN (NON STREET NAME) | RAILROAD TRACKS | DECIDUOUS AND CONIFEROUS TREE | BUSH / SHRUB AND STUMP | EDGE OF WOODED AREA | WETLAND | BUILDING | FENCE (UNIDENTIFIED) | BARBED WIRE FENCE | CHAIN LINK FENCE | ELECTRIC WIRE FENCE | WOOD FENCE | WOMEN WIRE FENCE | PLATE BEAM GUARDRAIL | CABLE GUARDRAIL | POST / BOLLARD | RETAINING WALL | PROPOSED | STREET CENTERLINE | RIGHT-OF-WAY | PERMANENT EASEMENT | TEMPORARY EASEMENT | CONSTRUCTION LIMITS | SANITARY SEWER, BULKHEAD AND MANHOLE | FORCE MAIN | SANITARY SERVICE AND CLEANOUT | WATER MAIN, TEE, HYDRANT, BULKHEAD AND VALVE | WATER VALVE, MANHOLE, REPAIRER BOX AND CROSS | STORM SEWER, MANHOLE AND CATCH BASIN | CULVERT AND ABRON ENWALL | DRY TIE SWALE | RR/PAV | STREET NAME SIGN | SIGN (NON STREET NAME) | RETAINING WALL | STOPPING SIGHT DISTANCE BASED ON:
3.5' HEIGHT OF OBJECT
Z' HEIGHT OF OBJECT |
|----------|--------------|--------------------|---------------|--------------------------|-----------|---------------|----------------------------|-----------------------------|-----------------------------------|----------------------------|-----------------------------|----------------------------|---------------------------------|----------|--------------------------------------|--|---------------------------------------|---|----------------------------------|----------------|------------------|------------------------|-----------------|-------------------------------|------------------------|---------------------|---------|----------|----------------------|-------------------|------------------|---------------------|------------|------------------|----------------------|-----------------|----------------|----------------|----------|-------------------|--------------|--------------------|--------------------|---------------------|--------------------------------------|------------|-------------------------------|--|--|--------------------------------------|--------------------------|---------------|--------|------------------|------------------------|----------------|---|



MANDOT # _____

INDEX

SHEET NO.	TITLE SHEET	DESCRIPTION
1	STATEMENT OF ESTIMATED QUANTITIES	
23	CONTRACT NOTES	
54	TABULATIONS	
74	CONSTRUCTION DETAILS	
1019	MINDOT STANDARD PLAN SHEETS	
20	RIGHT OF WAY PLAN	
22-24	REMOVAL PLAN	
25-27	SANITARY SEWER & WATER MAIN PLAN	
28-42	STORM SEWER PROFILES	
43	POND DETAILS	
50	SRTS PLAN	
51-57	EROSION CONTROL & TYPE ESTABLISHMENT PLAN	
58-61	SWPPP	
62-63	CONTRACT PLAN	
67-69	PATIENT MARKING & SIGNING PLAN	
70-76	LIGHTING PLAN	
77-78	INTERSECTION & PEDESTRIAN RAMP DETAIL	
79-87	CROSS SECTIONS	

THIS PLAN CONTAINS 97 SHEETS.

DESIGN DESIGNATION

STOPPING SIGHT DISTANCE BASED ON: 4.5' HEIGHT OF OBJECT
 0' HEIGHT OF OBJECT
 DESIGN SPEED: 20 MPH

DATE: 10/07/2020
 SCALE: 1" = 4000'

APPROVED: _____
 CITY ENGINEER OF MORRISON COUNTY

APPROVED: _____
 COUNTY ENGINEER

RECOMMENDED FOR APPROVAL: _____
 DISTRICT STATE AND FEDERAL, AND BUREAU/AGENCY

RECOMMENDED FOR APPROVAL: _____
 APPROVED FOR STATE AND FEDERAL, AND FINANCING STATE AND ENGINEER

PIERZ, MINNESOTA

FILE NO. MORR156439
 SHEET NO. 97



THE 2018 EDITION OF THE MINNESOTA DEPARTMENT OF TRANSPORTATION STANDARD SPECIFICATIONS FOR CONSTRUCTION SHALL GOVERN EXCEPT AS MODIFIED BY THE SPECIFICATIONS FOR THIS PROJECT.

ALL EXISTING UTILITIES SHOWN SHALL BE CORROBORATED TO THE LATEST EDITION OF THE MINNESOTA DEPARTMENT OF TRANSPORTATION STANDARD SPECIFICATIONS FOR CONSTRUCTION. THE CONTRACTOR SHALL CALL THE ONE CALL SYSTEM AT 811 BEFORE COMMENCING EXCAVATION.

NOTE: THE SURFACE UTILITY QUALITY INFORMATION IN THIS PLAN IS LEVEL D. THIS UTILITY QUALITY LEVEL WAS DETERMINED ACCORDING TO THE MINNESOTA DEPARTMENT OF TRANSPORTATION STANDARD SPECIFICATIONS FOR THE COLLECTION AND DETECTION OF EXISTING SURFACE UTILITY DATA.

THE CONTRACTOR SHALL CALL THE ONE CALL SYSTEM AT 811 BEFORE COMMENCING EXCAVATION.

DESIGNED BY: JHG
 CHECKED BY: SJH
 DESIGN TEAM: JHG

NO. REV. DATE

REVISIONS

PHONE: 320.329.3400
 1500 24TH AVENUE SOUTH
 ST. CLOUD, MN 56301-1117
 WWW.SEH.COM

SCOTT D. HEDLUND, PE (MINN)
 LICENSE NO. 4068
 1500 24TH AVENUE SOUTH
 ST. CLOUD, MN 56301-1117
 WWW.SEH.COM

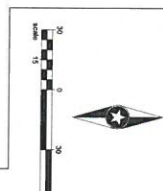
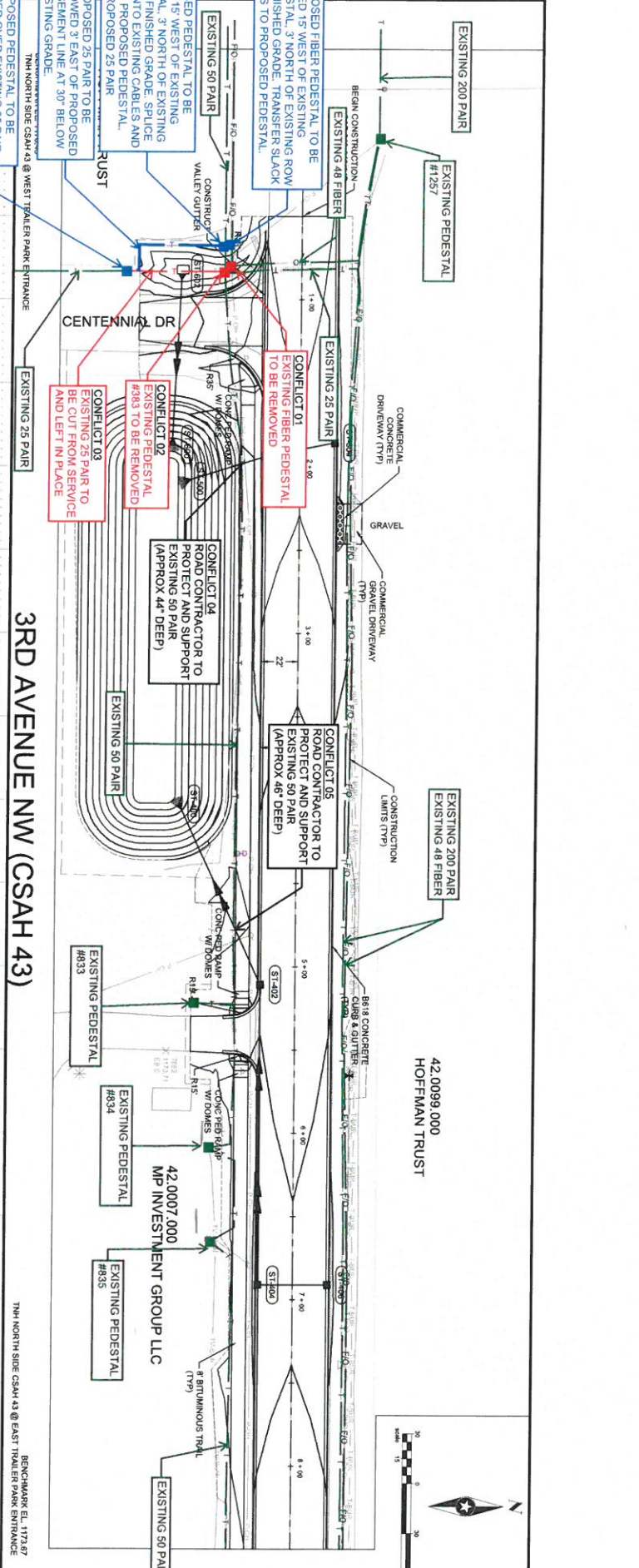
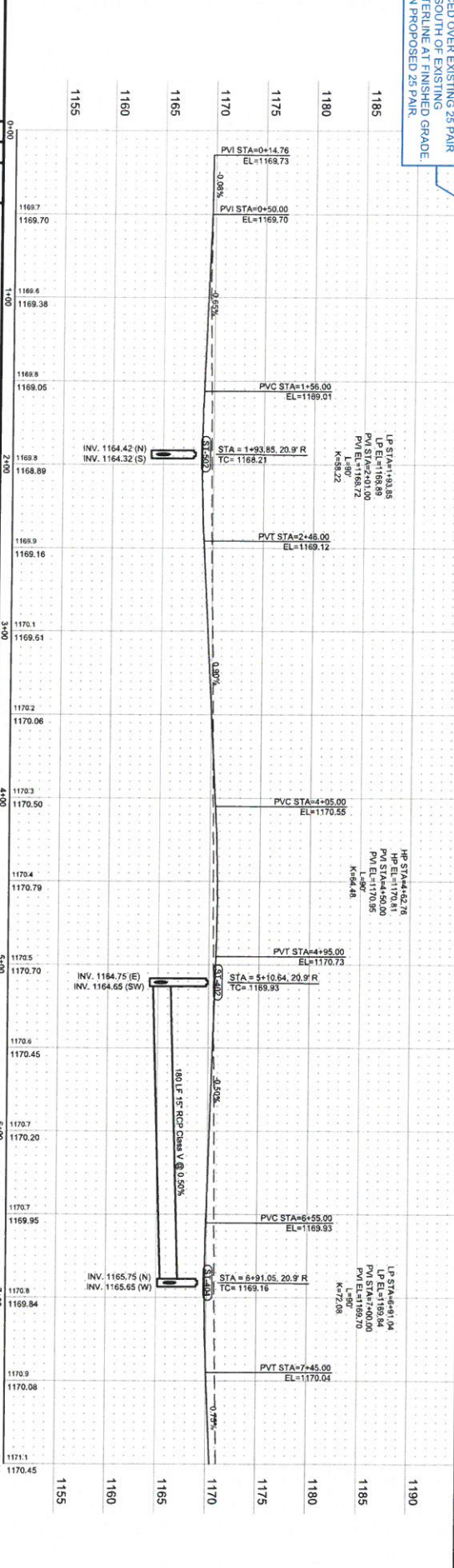
MORRISON COUNTY, MINNESOTA
 SAP 048-44-017 SAP 048-49-014
 SP 048-91-005

STREET & STORM SEWER PLAN & PROFILE
 2021 CSAH 43 & 39 RECONSTRUCTION AND SRTS

FILE NO. MORRIS 150439

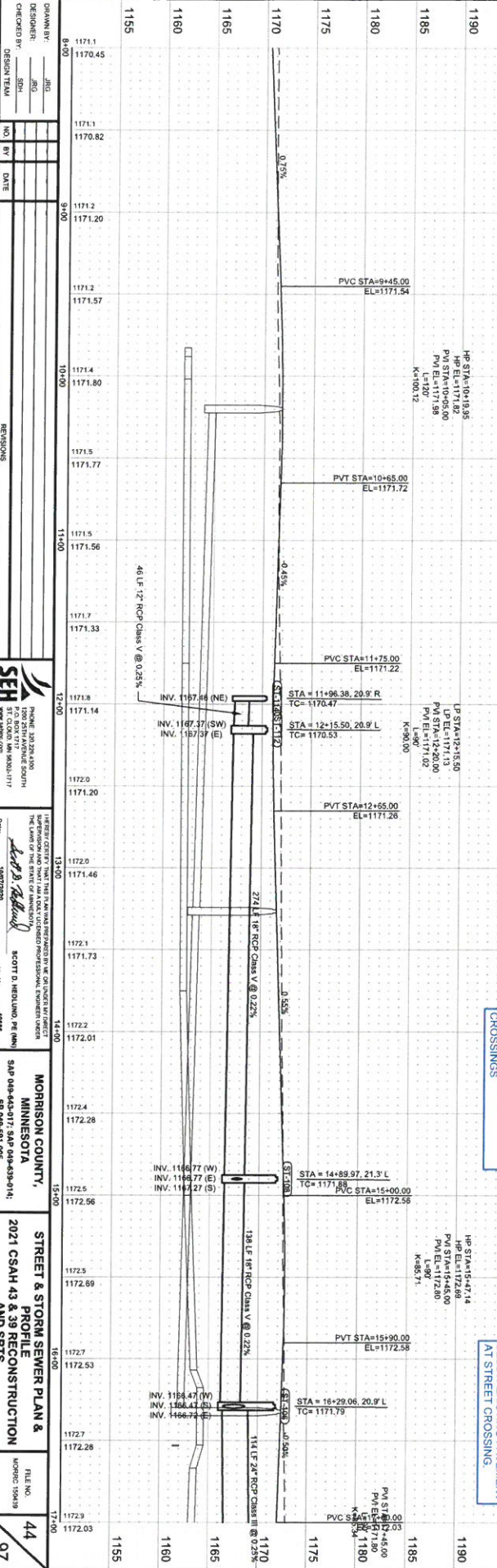
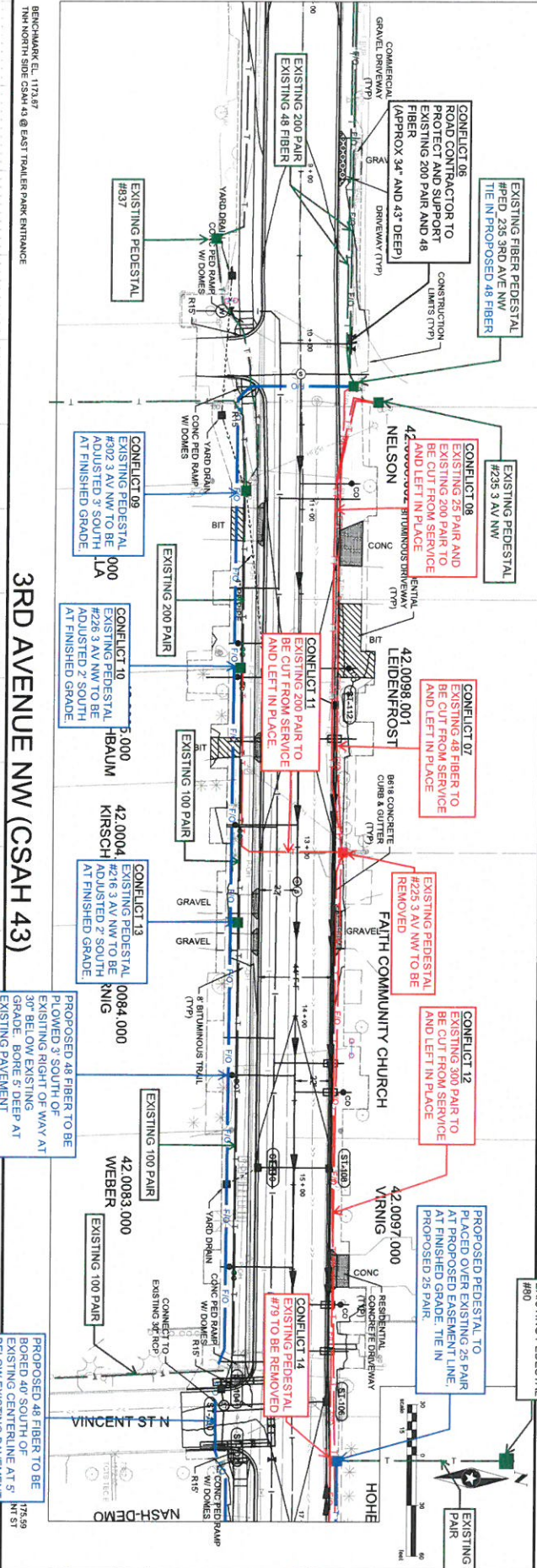
43

97



3RD AVENUE NW (CSAH 43)

BENCHMARK EL. 1173.67
 1/4" NORTH SIDE CSAH 43 @ EAST TRAILER PARK ENTRANCE



3RD AVENUE NW (CSAH 43)

STATION	ELEVATION
1170	1170.82
1171	1171.20
1172	1171.57
1173	1171.80
1174	1171.77
1175	1171.56
1176	1171.33
1177	1171.14
1178	1171.20
1179	1171.46
1180	1171.73
1181	1172.01
1182	1172.28
1183	1172.56
1184	1172.89
1185	1173.14
1186	1173.41
1187	1173.68
1188	1173.95
1189	1174.22
1190	1174.49

DESIGNER: JAMES H. MORRISON, INC. 1700 STATE STREET SOUTH, MINNEAPOLIS, MN 55401-1717

CHECKED BY: DESIGN TEAM

REVISIONS:

NO.	BY	DATE

SEH SCOTT D. HEDLUND, P.E. (MN) 15077283

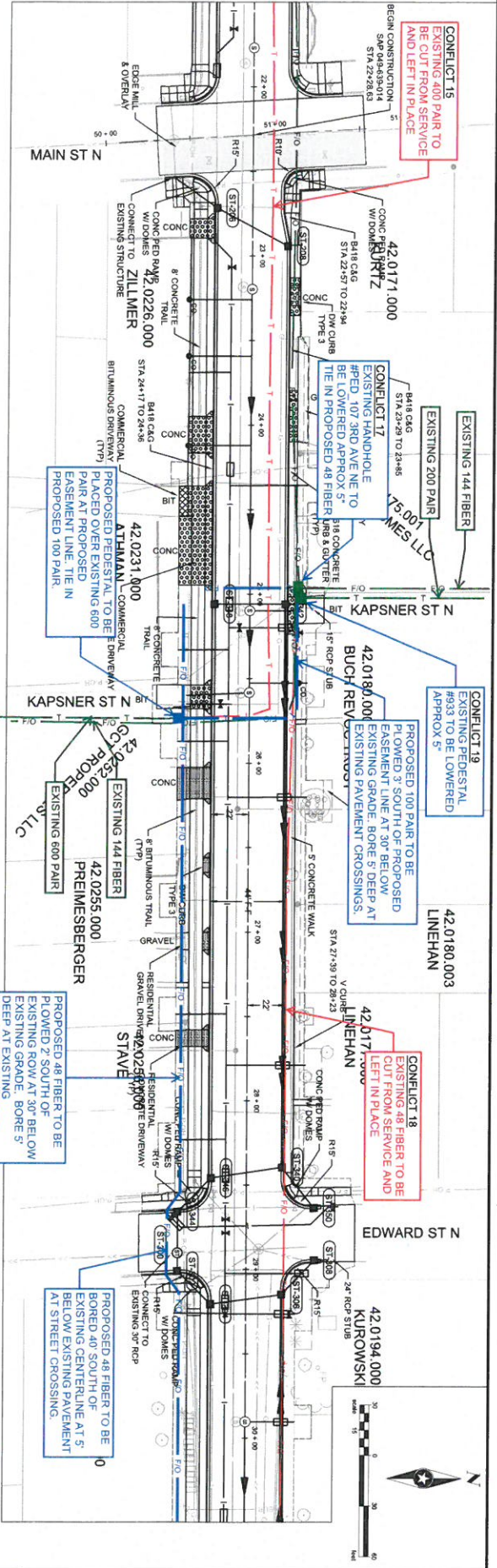
MORRISON COUNTY, MINNESOTA 54P 046-44-017; 54N 046-43-014; 5P 046-91-005

STREET & STORM SEWER PLAN & PROFILE 2021 CSAH 43 & 39 RECONSTRUCTION AND SRIS

FILE NO. MORRIS 150439

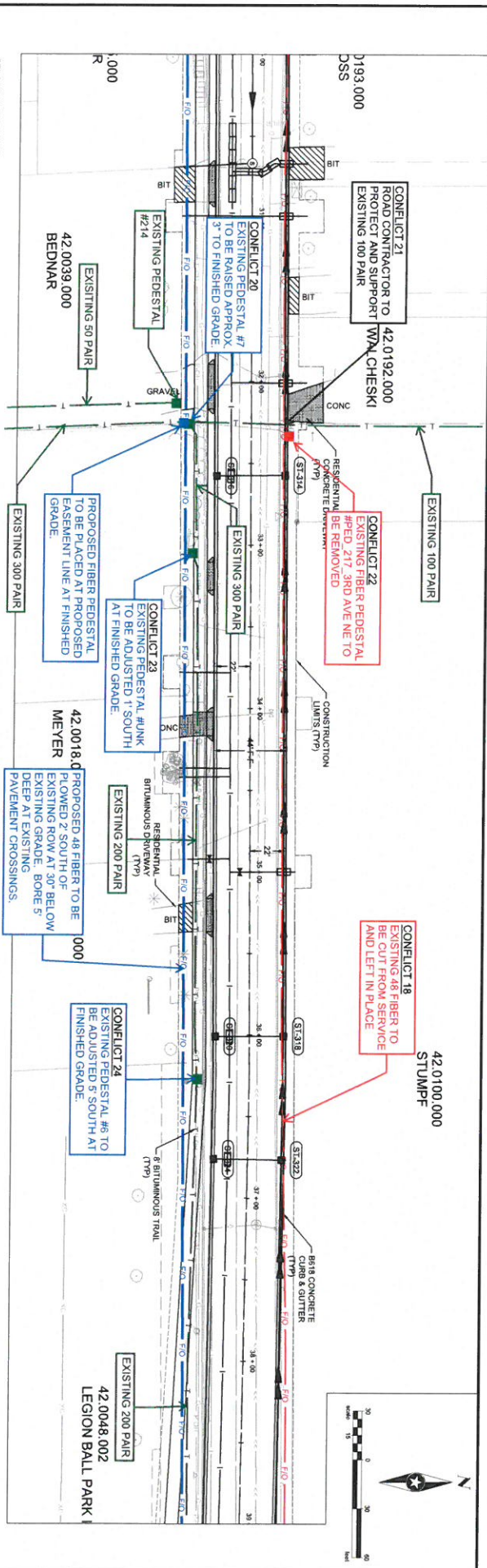
44

97



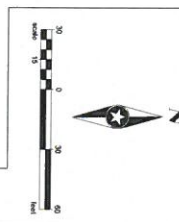
STATION	VERTICAL ELEVATION	VERTICAL CURVE DATA	PROFILES
1175	1174.61		HP STA=23+19.03 HP EL=1174.507 PVI EL=1174.507 PVI STA=23+19.03 L=800 K=51.94
1180	1174.82		PVI STA=22+07.97 EL=1174.48 PVI STA=22+28.63 EL=1174.71 PVI STA=22+44.38 EL=1174.54 PVC STA=22+55.00 EL=1174.67 STA=22+71.61, 20.9' R TC=1174.06 STA=22+94.14, 20.9' L TC=1174.82
1185	1174.98		PVT STA=23+45.00 EL=1175.00
1190	1175.03		
1195	1175.03		
1200	1174.98		
1205	1174.82		
1210	1174.73		
1215	1174.48		
1220	1174.23		
1225	1174.11		
1230	1173.98		
1235	1173.73		
1240	1173.58		
1245	1173.48		
1250	1173.23		
1255	1172.98		
1260	1172.73		
1265	1172.48		
1270	1172.23		
1275	1171.98		
1280	1171.73		
1285	1171.48		
1290	1171.23		
1295	1170.98		
1300	1170.73		
1305	1170.48		
1310	1170.23		
1315	1170.00		
1320	1169.75		
1325	1169.50		
1330	1169.25		
1335	1169.00		
1340	1168.75		
1345	1168.50		
1350	1168.25		
1355	1168.00		
1360	1167.75		
1365	1167.50		
1370	1167.25		
1375	1167.00		
1380	1166.75		
1385	1166.50		
1390	1166.25		
1395	1166.00		
1400	1165.75		
1405	1165.50		
1410	1165.25		
1415	1165.00		
1420	1164.75		
1425	1164.50		
1430	1164.25		
1435	1164.00		
1440	1163.75		
1445	1163.50		
1450	1163.25		
1455	1163.00		
1460	1162.75		
1465	1162.50		
1470	1162.25		
1475	1162.00		
1480	1161.75		
1485	1161.50		
1490	1161.25		
1495	1161.00		
1500	1160.75		
1505	1160.50		
1510	1160.25		
1515	1160.00		

DRAWN BY: JRG CHECKED BY: JRG DESIGN TEAM: JRG	DATE: 10/30/2020 REVISIONS:	 SEH ENGINEERING 1000 25TH AVENUE SOUTH SUITE 100 DENVER, CO 80202	SCOTT D. MEDLUND, PE (AW) LICENSE NO. 40485 10/30/2020	MORRISON COUNTY, MINNESOTA SAP 048-645-017; SAP 048-639-014; SP 048-291-005	STREET & STORM SEWER PLAN & PROFILE 2021 CSAH 43 & 39 RECONSTRUCTION AND SRTS	FILE NO. 150439 SHEET NO. 97
--	--------------------------------	--	--	--	--	---------------------------------



3RD AVENUE NW (CSAH 39)

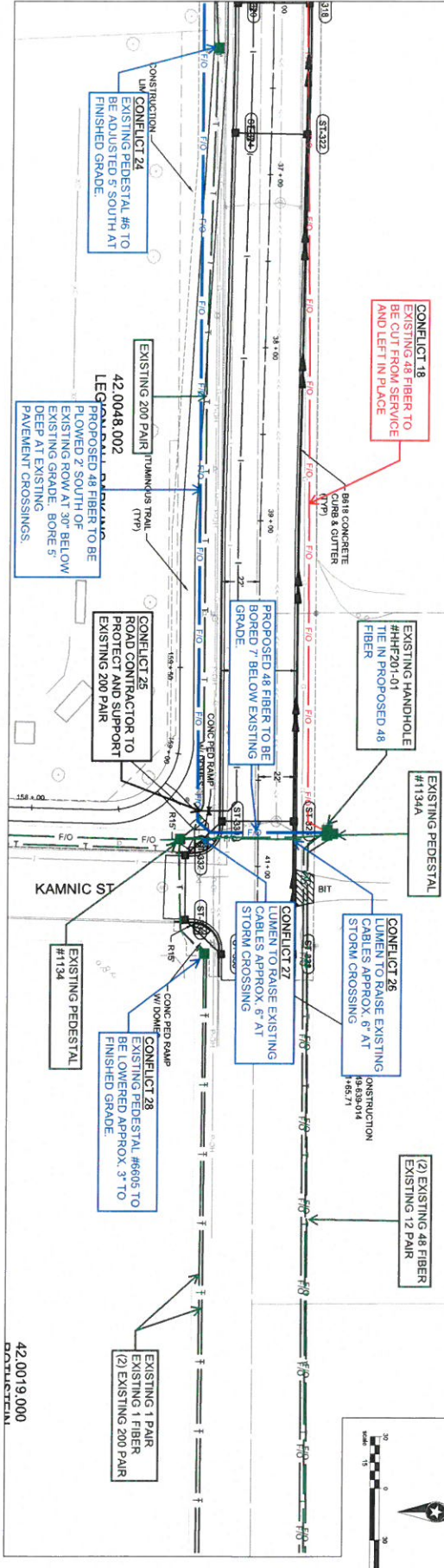
STATION	ELEVATION	DESCRIPTION
1195	1172.68	BENCHMARK EL. 1175.58
1190	1172.93	THN SE QUAD CSAH 39 & EDWARD ST
1185	1173.2	
1180	1173.18	
1175	1173.1	
1170	1173.43	
1165	1173.3	
1160	1173.68	
1155	1173.5	
1150	1173.93	
1145	1174.17	
1140	1174.26	
1135	1173.9	
1130	1174.17	
1125	1174.1	
1120	1173.93	
1115	1174.2	
1110	1174.17	
1105	1174.1	
1100	1173.93	
1095	1174.2	
1090	1174.17	
1085	1174.1	
1080	1173.93	
1075	1174.2	
1070	1174.17	
1065	1174.1	
1060	1173.93	
1055	1174.2	
1050	1174.17	
1045	1174.1	
1040	1173.93	
1035	1174.2	
1030	1174.17	
1025	1174.1	
1020	1173.93	
1015	1174.2	
1010	1174.17	
1005	1174.1	
1000	1173.93	
995	1174.2	
990	1174.17	
985	1174.1	
980	1173.93	
975	1174.2	
970	1174.17	
965	1174.1	
960	1173.93	
955	1174.2	
950	1174.17	
945	1174.1	
940	1173.93	
935	1174.2	
930	1174.17	
925	1174.1	
920	1173.93	
915	1174.2	
910	1174.17	
905	1174.1	
900	1173.93	
895	1174.2	
890	1174.17	
885	1174.1	
880	1173.93	
875	1174.2	
870	1174.17	
865	1174.1	
860	1173.93	
855	1174.2	
850	1174.17	
845	1174.1	
840	1173.93	
835	1174.2	
830	1174.17	
825	1174.1	
820	1173.93	
815	1174.2	
810	1174.17	
805	1174.1	
800	1173.93	
795	1174.2	
790	1174.17	
785	1174.1	
780	1173.93	
775	1174.2	
770	1174.17	
765	1174.1	
760	1173.93	
755	1174.2	
750	1174.17	
745	1174.1	
740	1173.93	
735	1174.2	
730	1174.17	
725	1174.1	
720	1173.93	
715	1174.2	
710	1174.17	
705	1174.1	
700	1173.93	
695	1174.2	
690	1174.17	
685	1174.1	
680	1173.93	
675	1174.2	
670	1174.17	
665	1174.1	
660	1173.93	
655	1174.2	
650	1174.17	
645	1174.1	
640	1173.93	
635	1174.2	
630	1174.17	
625	1174.1	
620	1173.93	
615	1174.2	
610	1174.17	
605	1174.1	
600	1173.93	
595	1174.2	
590	1174.17	
585	1174.1	
580	1173.93	
575	1174.2	
570	1174.17	
565	1174.1	
560	1173.93	
555	1174.2	
550	1174.17	
545	1174.1	
540	1173.93	
535	1174.2	
530	1174.17	
525	1174.1	
520	1173.93	
515	1174.2	
510	1174.17	
505	1174.1	
500	1173.93	
495	1174.2	
490	1174.17	
485	1174.1	
480	1173.93	
475	1174.2	
470	1174.17	
465	1174.1	
460	1173.93	
455	1174.2	
450	1174.17	
445	1174.1	
440	1173.93	
435	1174.2	
430	1174.17	
425	1174.1	
420	1173.93	
415	1174.2	
410	1174.17	
405	1174.1	
400	1173.93	
395	1174.2	
390	1174.17	
385	1174.1	
380	1173.93	
375	1174.2	
370	1174.17	
365	1174.1	
360	1173.93	
355	1174.2	
350	1174.17	
345	1174.1	
340	1173.93	
335	1174.2	
330	1174.17	
325	1174.1	
320	1173.93	
315	1174.2	
310	1174.17	
305	1174.1	
300	1173.93	
295	1174.2	
290	1174.17	
285	1174.1	
280	1173.93	
275	1174.2	
270	1174.17	
265	1174.1	
260	1173.93	
255	1174.2	
250	1174.17	
245	1174.1	
240	1173.93	
235	1174.2	
230	1174.17	
225	1174.1	
220	1173.93	
215	1174.2	
210	1174.17	
205	1174.1	
200	1173.93	
195	1174.2	
190	1174.17	
185	1174.1	
180	1173.93	
175	1174.2	
170	1174.17	
165	1174.1	
160	1173.93	
155	1174.2	
150	1174.17	
145	1174.1	
140	1173.93	
135	1174.2	
130	1174.17	
125	1174.1	
120	1173.93	
115	1174.2	
110	1174.17	
105	1174.1	
100	1173.93	
95	1174.2	
90	1174.17	
85	1174.1	
80	1173.93	
75	1174.2	
70	1174.17	
65	1174.1	
60	1173.93	
55	1174.2	
50	1174.17	
45	1174.1	
40	1173.93	
35	1174.2	
30	1174.17	
25	1174.1	
20	1173.93	
15	1174.2	
10	1174.17	
5	1174.1	
0	1173.93	



DESIGNED BY: JIS	CHECKED BY: JIS	DESIGN TEAM: JIS	NO. BY: JIS	DATE: 10/30/2020
PROJECT: 3RD AVENUE NW 1500 25TH AVENUE SOUTH ST. CLOUD, MN 56303-1117 WWW.SEH.COM				
I HEREBY CERTIFY THAT I AM A LICENSED PROFESSIONAL ENGINEER IN THE STATE OF MINNESOTA. THE SEAL OF THE ENGINEER IS A TRUE AND CORRECT REPRESENTATION OF MY LICENSE. SCOTT O. HEALD, P.E. (M)				
MORRISON COUNTY, MINNESOTA SAP 048-65-017 5AF 048-03-014 SP 048-91-005				
STREET & STORM SEWER PLAN & PROFILE 2021 CSAH 43 & 39 RECONSTRUCTION AND SRTS				
FILE NO. MORPC 150439	47			
97				

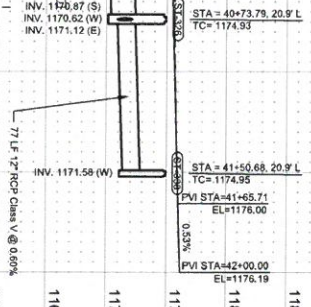
42.0100.000
STUMPF

05.0313.000
ROTHSTEIN



3RD AVENUE NE (CSAH 39)

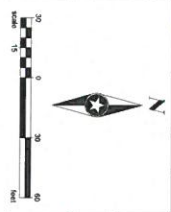
1195	1175.3	38+00
1190	1174.67	
1185	1175.4	
1180	1174.92	
1175	1175.5	40+00
1170	1175.17	
1165	1175.6	
1160	1175.42	
1155	1175.7	41+00
	1175.67	
	1176.0	
	1175.93	
	1176.2	42+00
	1176.16	
	1175.98	
	1175.82	
	1175.66	
	1175.50	
	1175.34	




DRAWN BY: JRG	CHECKED BY: SEH	DESIGN TEAM	NO.	REV.	DATE
			REVISIONS		
PUBLIC: 301 328-1400 1500 25TH AVENUE SOUTH SUITE 200 ST. CLOUD, MN 56301-1117 www.seh.com					
I HEREBY CERTIFY THAT THE INFORMATION CONTAINED HEREIN IS TRUE AND CORRECT AND THAT I AM A duly licensed professional engineer in the State of Minnesota. Scott O. Merlino, P.E. License No. 46688					
MORRISON COUNTY, MINNESOTA SAP 048-648-017; SAP 048-638-014; SP 048-591-005		STREET & STORM SEWER PLAN & PROFILE 2021 CSAH 43 & 39 RECONSTRUCTION AND SRTS		FILE NO. MORRC 150439	48
					97

BENCHMARK EL. 1176.83
TIN SOUTH SIDE CSAH 39 @ 228 3RD AVE NE

BENCHMARK EL. 1176.51
TIN SW QUAD CSAH 39 @ KAMNIC ST



DESIGNED BY	JRG	NO.	BY	DATE	REVISIONS	DATE	BY
CHECKED BY	SEH						
DESIGNED TEAM							

 SEH ENGINEERING 1700 SOUTH AVENUE SOUTH SUITE 200 MINNEAPOLIS, MN 55405-1117 WWW.SEH-ENGINEERING.COM	I hereby certify that I am a duly Licensed Professional Engineer in the State of Minnesota. THE NAME OF THE STATE OF MINNESOTA SCOTT D. HENNING, PE (MN) License No. 40885	MORRISON COUNTY, MINNESOTA SAP 048-443-017; SAP 048-439-014; SP 048-491-005	SRTS PLAN & PROFILE 2021 CSAH 43 & 39 RECONSTRUCTION AND SRTS	FILE NO. MORRIS 150439	57 97
--	---	--	---	---------------------------	----------

