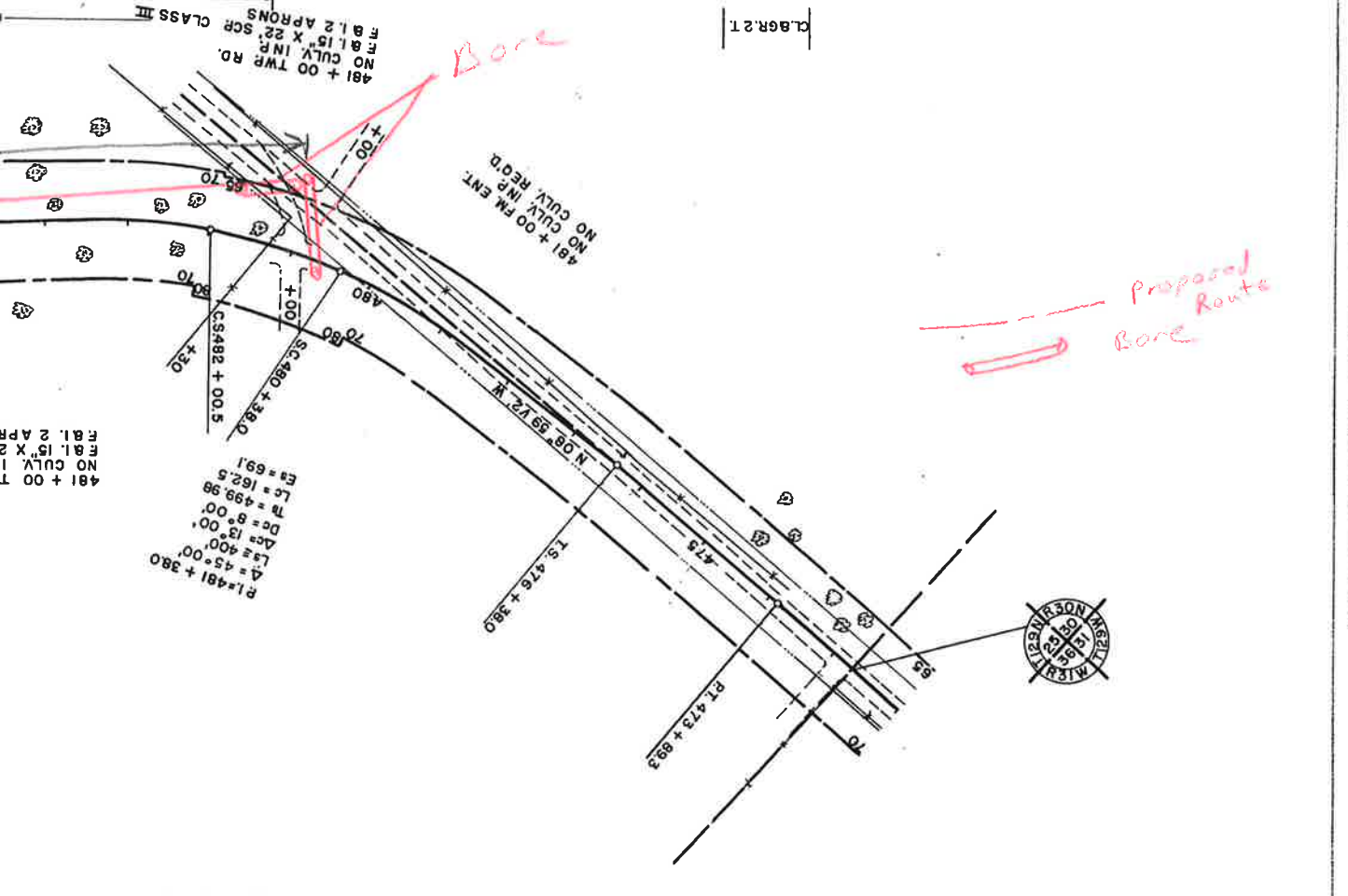
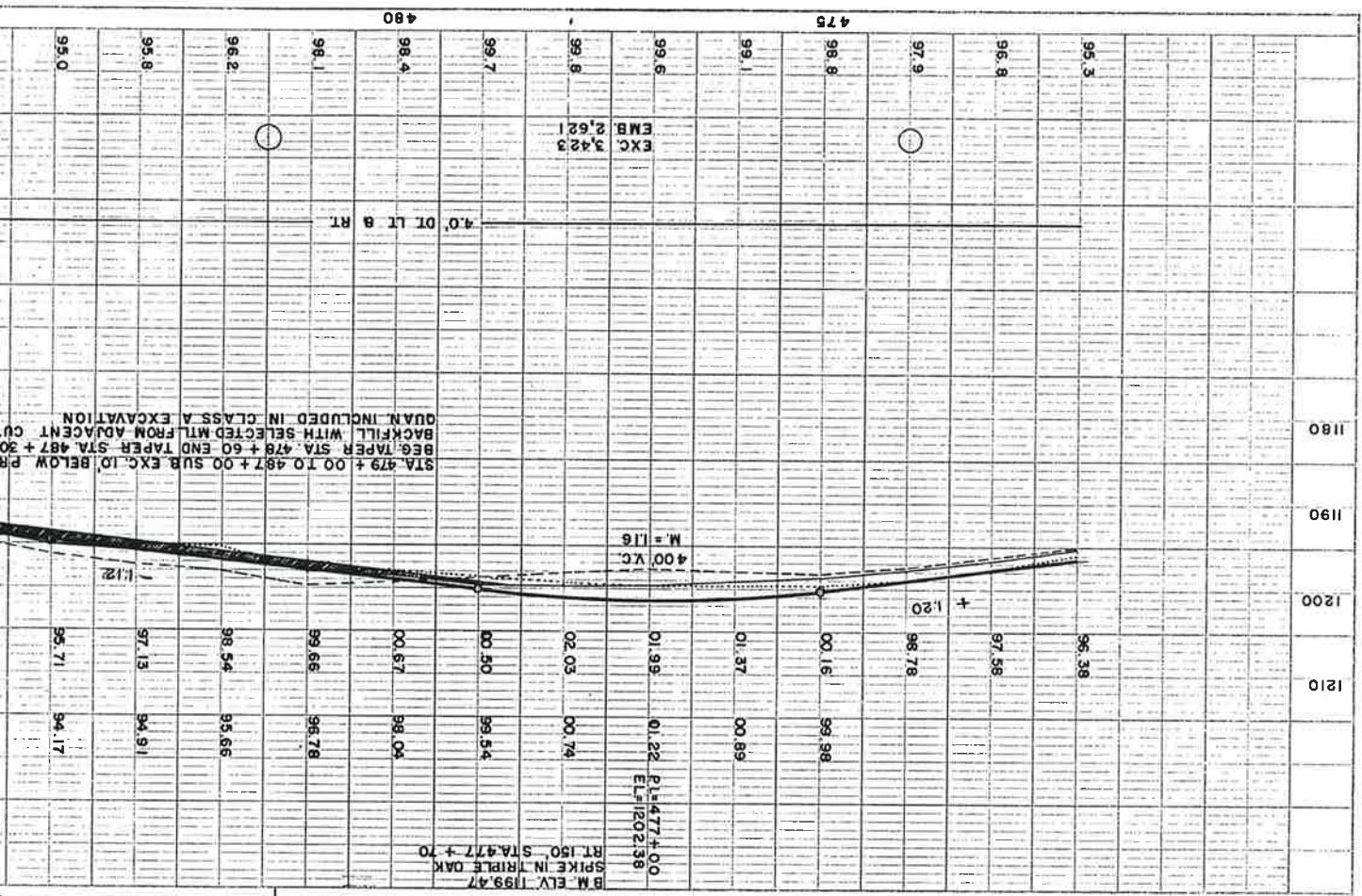


PROFILE
 PROJECT NO. 1180
 DATE 11/80
 DRAWN BY [illegible]

PLAN
 PROJECT NO. 1180
 DATE 11/80
 DRAWN BY [illegible]



Bore

Proposed Route



$P = 481 + 380$
 $\Delta = 45' - 00"$
 $L_2 = 400'$
 $D_c = 13' - 00"$
 $T = 8' - 00"$
 $L_c = 499.98'$
 $E_s = 69.1'$

481 + 00 T
 NO CULV. 1
 F&I 15' X 22'
 F&I 2 APR

481 + 00 TWR RD.
 NO CULV. IN R.
 F&I 15' X 22' SCR
 F&I 2 APRONS
 CLASS III

CLASR 21

B.M. ELY 1199.47
 SPIKE IN TRIPLE OAK
 RT 150 STA. 477 + 70
 400 VC
 M = 1.16

STA. 479 + 00 TO 487 + 00 SUB. EXC. 10' BELOW PR.
 BEG. TAPER STA. 478 + 60 END TAPER STA. 487 + 30
 BACKFILL WITH SELECTED MTL FROM ADJACENT CU
 QUAN. INCLUDED IN CLASS A EXCAVATION

STATE OF MINNESOTA
DEPARTMENT OF HIGHWAYS

CONSTRUCTION PLAN FOR GRADING

County State Aid Highway No. 6

BETWEEN T.H. 238 IN ELMDALE CSAH 14 AND 1 MI. WEST & 1 MI. NORTH FLENSBURG

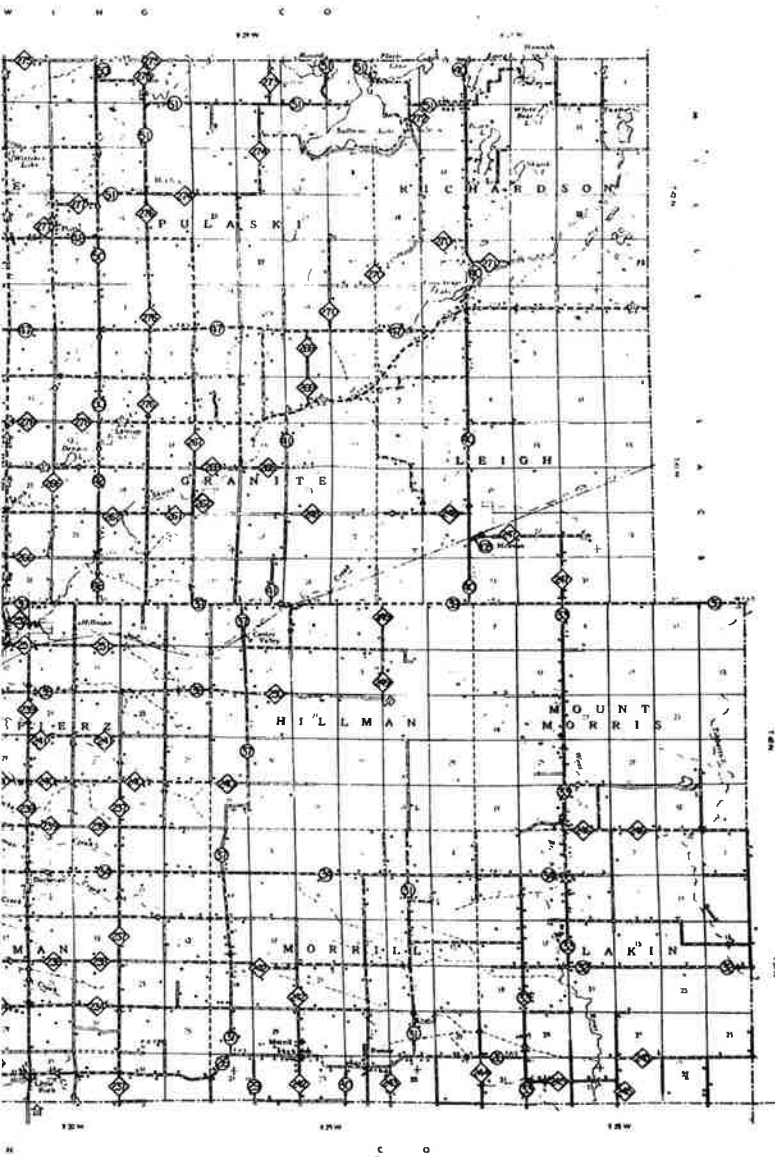
From SE. COR. SEC. 6 T127N R30W To 242' FT. NO. OF NW. COR. SEC. 6 T127N R30W
AND SW. COR. SEC. 7, T128N R30W TO 1,734' N. & 635.8' W. OF S. 1/4 COR. SEC. 25 T129N R31W
GROSS LENGTH 30,706.2 FEET 5.8156 MILES
BRIDGES LENGTH 0 FEET 0 MILES
EXCEPTIONS LENGTH 0 FEET 0 MILES
NET LENGTH 30,706.2 FEET 5.8156 MILES

MINN. PROJ.

Plan 1 inch = 200 Feet
PROFILE Horiz. 1 inch = 200 Feet Vert. 1 inch = 20 Feet
WORKING PLANS Horiz. 1 inch = 100 Feet Vert. 1 inch = 10 Feet Cross-Section 1 inch = 10 FEET
LAYOUT
Scale 1 inch = 10560 Feet

INDEX OF SHEETS
Sheet No. 1. Title Sheet & Layout Map
" No. 2. Est. Quantities & Typical Sec.
" No. 3. To 15 Plan & Profile
" No. 16 To 31 Cross Sections

DESIGN SPEED 50 M.P.H.



CONVENTIONAL SIGNS

STATE LINE	TWEEB	
COUNTY LINE	ROUGH	
TOWNSHIP OR RANGE LINE	OCCEARD	
SECTION LINE	ROCK LEDGE	
QUARTER LINE	SAND	
SIXTEENTH LINE	EDGE OF CUT	
RIGHT-OF-WAY LINE	TIE OF EMBANKMENT	
PRESENT ROAD 7/8 LINE	CATCH BASIN	
LIMITED ACCESS	HANDS	
PROPERTY LINE (Except Land Univ.)	DROP INLET	
VACATED PLATTED PROPERTY	FIRE HYDRANT	
CORPORATE OR CITY LIMITS	ICE LEAP	
TRUCK HIGHWAY CENTER LINE	STEEL LEAPS (Span 4-6)	
RETAINING WALL	RAILROAD CROSSING SIGN	
STEAM RAILROAD	RAILROAD CROSSING SIGN	
ELECTRIC RAILROAD	ELECTRIC WARNING SIGN	
RAILROAD RIGHT-OF-WAY LINE	CROSSING GATE	
CLEAR	CATTLE GUARD	
DAMPS OR WATERFALL	OVERHEAD (Highway Over)	
DAY SIGN	ABUTMENT, WALL & PIER	
DRAINAGE DITCH	BRIDGE	
HIGH TENSION LINE	CONCRETE	
POWER POLE LINE	CONCRETE (Over Bridge)	
TELEPHONE OR TELEGRAPH LINE	CONCRETE B-STONE PILE & BRCH 31-ETUCC	
TELEPHONE CONDUIT	WOOD	
WIRE FENCE	IRON PIPE	
RAILROAD SHOW LINE	STONE MOUNTAIN	
DAMPS OR HIGHWAY SHOW FENCE	WOOD STAKE OR PILE	
STONE WALL OR FENCE	BRIDGE CENTER	
GAP MAIN		
WATER PIPE		
SEWER PIPE		
DRAIN TILE		
GRAVEL PIT		
SAND PIT		
CLAY PIT		
ROCK QUARRY		
SPRINGS		
WEEP		

NOTE SECTION NUMBERS READ FROM THE SOUTH

ALL APPLICABLE FEDERAL, STATE AND LOCAL LAWS AND ORDINANCES WILL BE COMPLIED WITH IN THE CONSTRUCTION OF THIS PROJECT.
I HEREBY CERTIFY THAT THIS PLAN WAS PREPARED BY ME OR UNDER MY DIRECT SUPERVISION AND THAT I AM A DULY REGISTERED PROFESSIONAL ENGINEER UNDER THE LAWS OF THE STATE OF MINNESOTA

J. A. McMillan COUNTY ENGINEER DATE 1/14/61

MORRISON COUNTY REG NO 3635

RECOMMENDED FOR APPROVAL *R. A. Larson* 1-6-61 DISTRICT ENGINEER 19

RECOMMENDED FOR APPROVAL *J. A. McMillan* 1/10 1961

APPROVED _____ 1961 ENGINEER OF COUNTY DIVISION

DEPARTMENT OF COMMERCE
BUREAU OF PUBLIC ROADS
DISTRICT ENGINEER DATE

Minn. Project No. MICRO-FILMED S.A.P. 49-606-01 State Project No. _____