

STATE OF MINNESOTA  
 DEPARTMENT OF HIGHWAYS  
 CONSTRUCTION PLAN FOR  
**County State Aid Highway No. 12**

22 1962

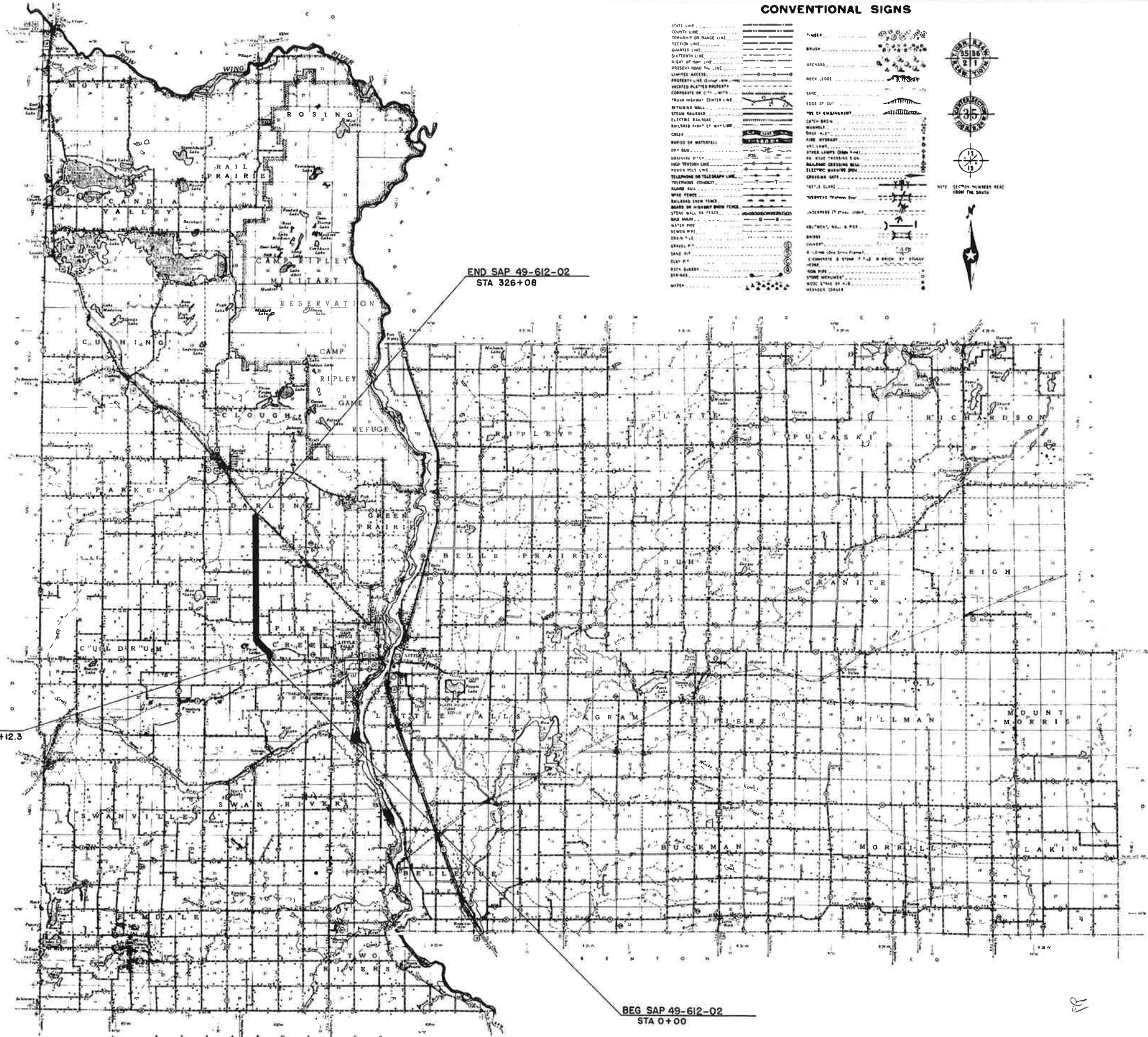
BETWEEN TH 28 AND TH 10  
 From S 1/4 COR SEC 16 T 129 N R 30 W To A POINT 4661 FT N OF SW COR SEC 21 T 130 N R 30 W

GROSS LENGTH 32,306.1 FEET 6.1185 MILES  
 BRIDGES LENGTH 0 FEET 0 MILES  
 EXCEPTIONS LENGTH 0 FEET 0 MILES  
 NET LENGTH 32,306.1 FEET 6.1185 MILES

Plan 1 inch = 200 Feet  
 PROFILE 1 inch = 200 Feet Vert 1 inch = 20 Feet  
 WORKING PLANS 1 inch = 10 Feet  
 LAYOUT Scale 1 inch = Feet

CONVENTIONAL SIGNS

STATE LINE	.....	WEEK	.....
COUNTY LINE	.....	BRIDGE	.....
TOWNSHIP OR RANGE LINE	.....	DECHAD	.....
SECTION LINE	.....	ROCK LEDGE	.....
QUARTER LINE	.....	SAND	.....
SIXTEENTH LINE	.....	EDGE OF CUT	.....
RIGHT OF WAY LINE	.....	TYPE OF EMBANKMENT	.....
PRESENT ROAD PA LINE	.....	GRAVEL	.....
UNIMPROVED ACCESS	.....	MASSIVE	.....
PRESENTLY UNIMPROVED	.....	GRAVEL	.....
ASBESTOS PLATED PROPERTY	.....	GRAVEL	.....
CONCRETE OR STEEL	.....	GRAVEL	.....
HOUSING CENTER LINE	.....	GRAVEL	.....
RETAINING WALL	.....	GRAVEL	.....
STEAM RAILROAD	.....	GRAVEL	.....
ELECTRIC RAILROAD	.....	GRAVEL	.....
RAILROAD RIGHT OF WAY LINE	.....	GRAVEL	.....
CRACK	.....	GRAVEL	.....
BARRELS OR WATERFALL	.....	GRAVEL	.....
DAY RUN	.....	GRAVEL	.....
DECHASED BY	.....	GRAVEL	.....
HIGH TENSION LINE	.....	GRAVEL	.....
POWER POLE LINE	.....	GRAVEL	.....
TELEPHONE OR TELEGRAPH LINE	.....	GRAVEL	.....
TELEPHONE CONDUIT	.....	GRAVEL	.....
GUARD RAIL	.....	GRAVEL	.....
WIRE FENCE	.....	GRAVEL	.....
RAILROAD TOWN FENCE	.....	GRAVEL	.....
BOARD OR WEATHER SHED FENCE	.....	GRAVEL	.....
STEEL WALL OR FENCE	.....	GRAVEL	.....
WATER PIPE	.....	GRAVEL	.....
SEWER PIPE	.....	GRAVEL	.....
SEWER	.....	GRAVEL	.....
SAND PIT	.....	GRAVEL	.....
CLAY	.....	GRAVEL	.....
ROCK QUARRY	.....	GRAVEL	.....
SPRINGS	.....	GRAVEL	.....
WATER	.....	GRAVEL	.....



END SAP 49-612-02  
 STA 326+08

BEG SAP 49-612-02  
 STA 0+00

EQUATION  
 18+10.4 = 21+12.3

INDEX OF SHEETS

Sheet No. 1	Title Sheet & Layout Map
No. 2	Est. Quantities & Typical Sec.
No. 3 To 14	Plan & Profile
No. 15 To 20	Cross Sections
No. 21	Borrow Cross Sections

DESIGN SPEED 50 MPH  
 EXCEPTING APP TO TH 28 STA 1 TO 22.

SPECIFICATIONS  
 THE "SPECIFICATIONS FOR HIGHWAY CONSTRUCTION" DATED MAY 1, 1959, AND SUBMITTED FOR APPROVAL BY THE DIVISION ENGINEER OF THE BUREAU OF PUBLIC ROADS ON MARCH 26, 1959, SHALL GOVERN.

ALL APPLICABLE FEDERAL, STATE AND LOCAL LAWS AND ORDINANCES WILL BE COMPLIED WITH IN THE CONSTRUCTION OF THIS PROJECT.

I HEREBY CERTIFY THAT THIS PLAN WAS PREPARED BY ME OR UNDER MY DIRECT SUPERVISION AND THAT I AM A DULY LICENSED PROFESSIONAL ENGINEER UNDER THE LAWS OF THE STATE OF MINNESOTA.

*J.M. Chapman* DATE Jan. 2, 1962

MORRISON COUNTY REG. NO. 3635

RECOMMENDED FOR APPROVAL *R. Johnson* 1-4 1962  
 ASST. DISTRICT ENGINEER

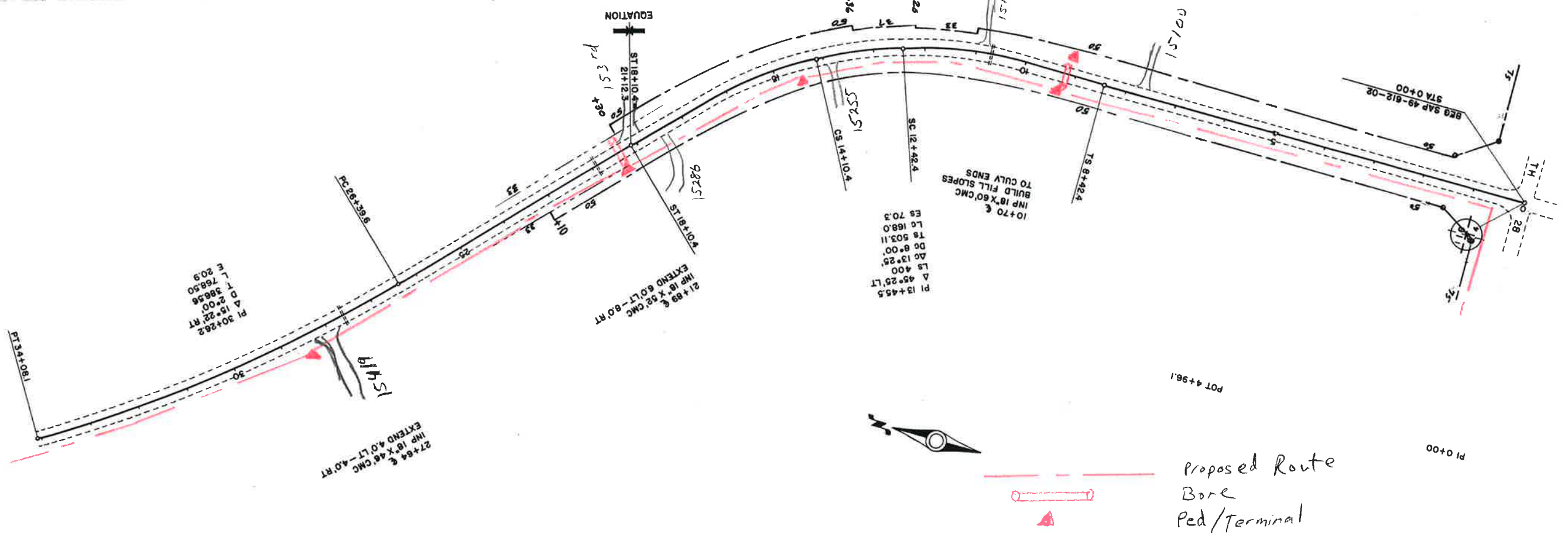
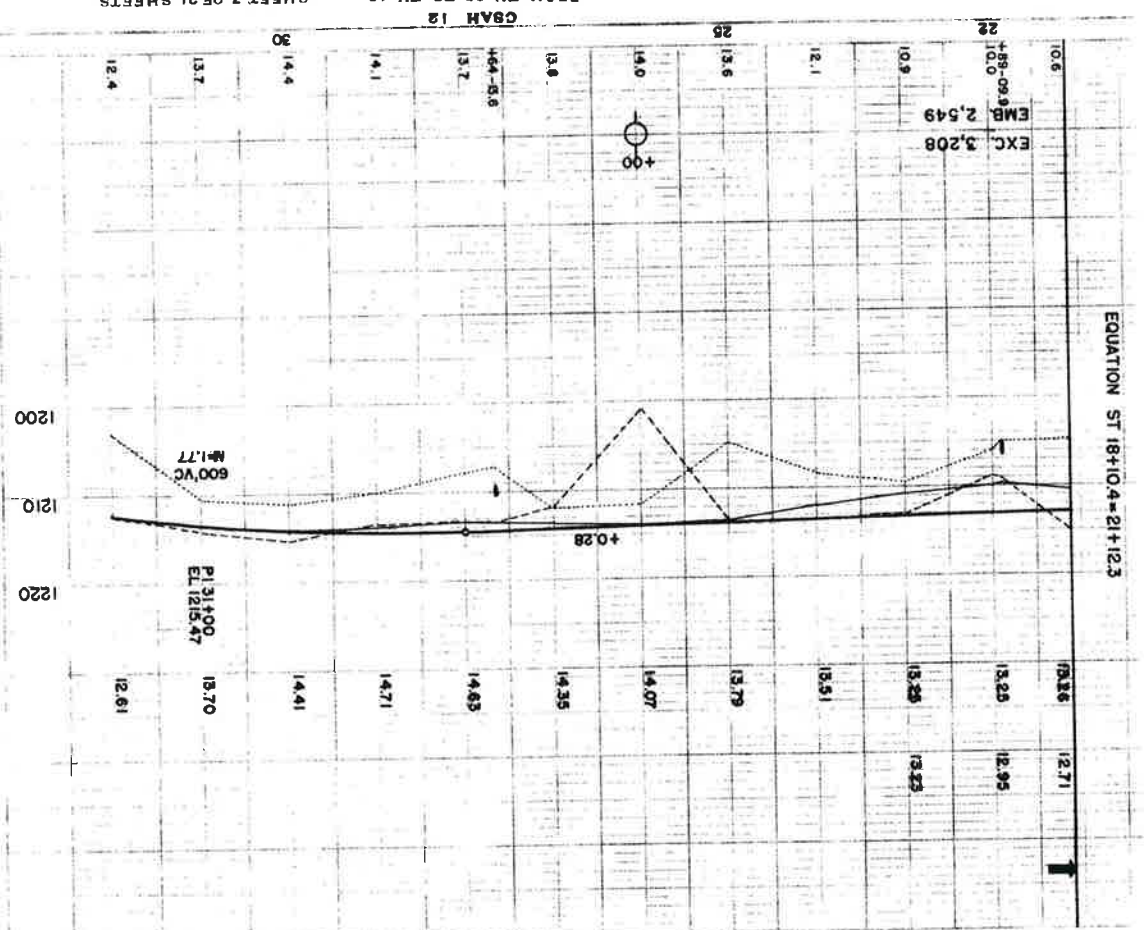
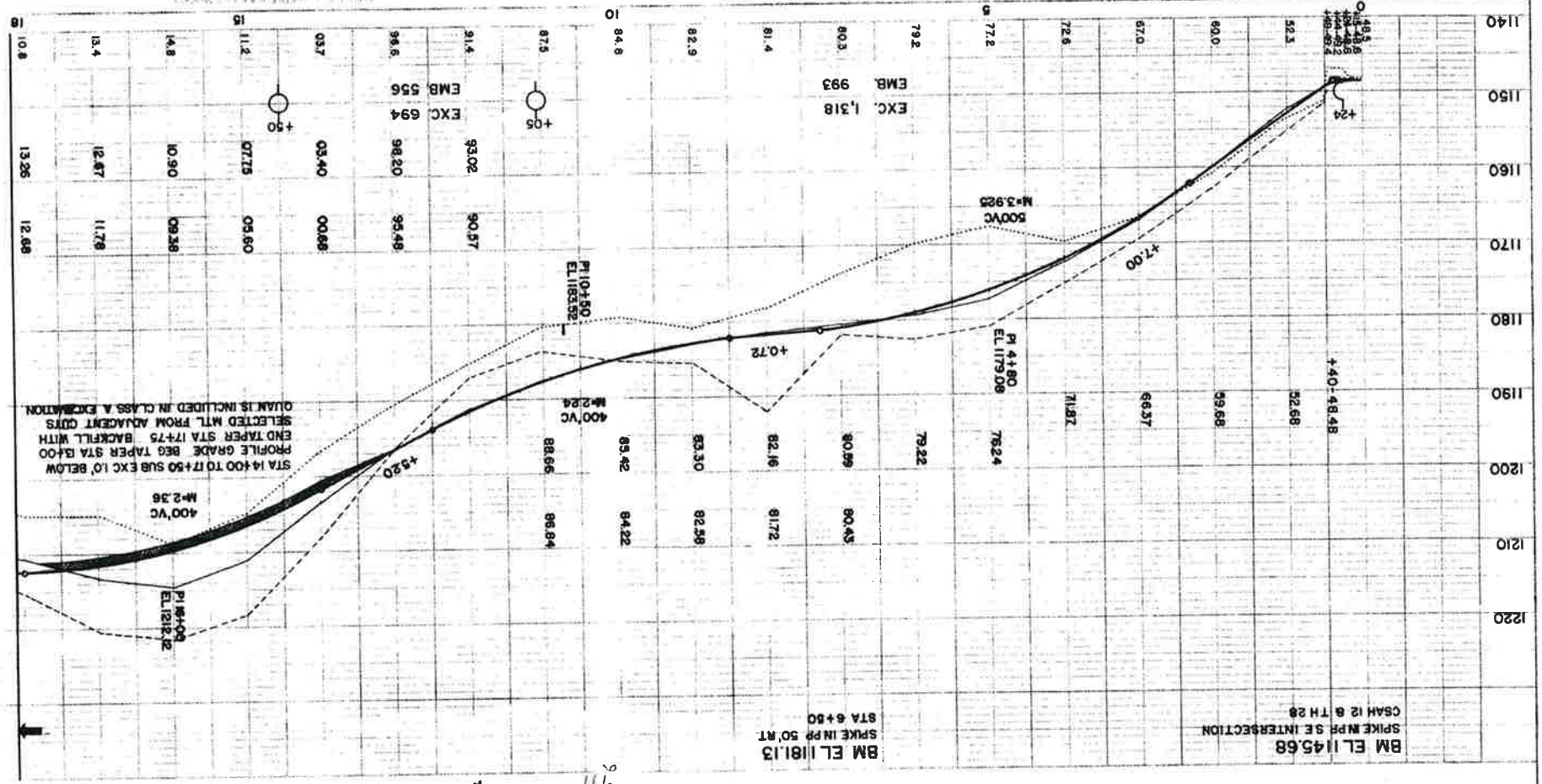
RECOMMENDED FOR APPROVAL *J.D. McMillan* 1/18 1962

APPROVED *J.M. Chapman* 1962  
 STATE AID ENGINEER

MICRO-FILMED  
 S.A.P. 49-612-02

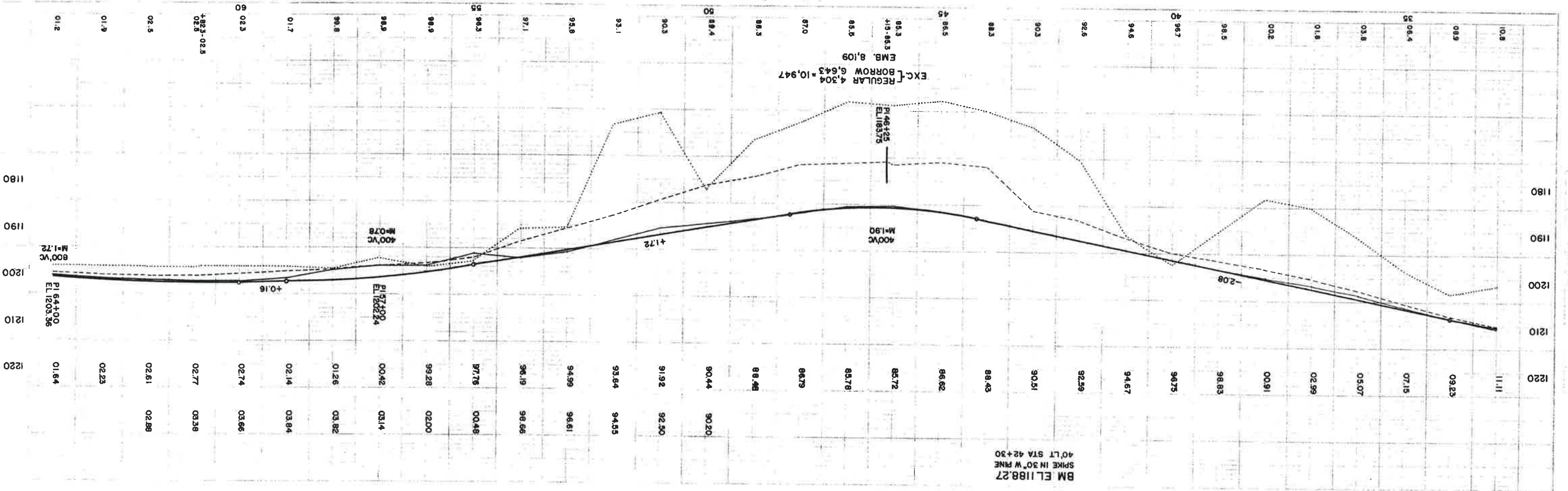
PROFILE  
 DATE: 10/1/02  
 DRAWN BY: J. W. BROWN  
 CHECKED BY: J. W. BROWN

PLAN  
 DATE: 10/1/02  
 DRAWN BY: J. W. BROWN  
 CHECKED BY: J. W. BROWN



SAP 49-612-02  
 SHEET 3 OF 21 SHEETS  
 FROM TH 28 TO TH 10  
 CSAH 12

Proposed Route  
 Bore  
 Ped/Terminal



SAP 49-612-02  
FROM TH 28 TO TH 10  
SHEET 4 OF 21 SHEETS

