

SP 49-502-02
MINN. PROJ. 3420(2)
END PROJECT
STA. 716+77.7

STATE OF MINNESOTA DEPARTMENT OF HIGHWAYS

Plan and Profile of State Road No. 35

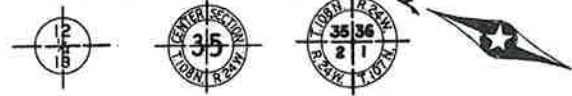
MORRISON COUNTY
From 438' South & 1874' East of the West 1/4 Cor. Sec. 25 T129N R31W To Sec. 24 T129N R31W
T.H. No. 28 N.W. Cor. T. Sec. 24 T129N R31W
(See proper reference to Section, Township and Range)

The Specifications for Highway Construction Dated July 1, 1947, and submitted for approval by the Division Engineer of the Public Roads Administration, Oct. 15, 1947, shall govern

GROSS LENGTH 10,777.7 FEET 2.0412 MILES
LENGTH OF EXCEPTIONS NONE FEET NONE MILES
NET LENGTH 10,777.7 FEET 2.0412 MILES

PLAN 1 Inch = 200 Feet
PROFILE Horiz. 1 Inch = 200 Feet. Vert. 1 Inch = 20 Feet
WORKING PLANS Horiz. 1 Inch = 100 Feet
Vert. 1 Inch = 10 Feet
Cross-Section, 1 Inch = Feet
LAYOUT Scale 1 Inch = 10560 Feet

CONVENTIONAL SIGNS	ABBREVIATIONS
STATE LINE	EXCAVATION
COUNTY LINE	EARTH
TWP OR RANGE LINE	LOOSE ROCK
SECTION LINE	SOLID ROCK
RIGHT OF WAY LINE	EMBANKMENT
CORPORATE OR CITY LIMITS	OVERHAUL
ROAD CENTER LINE	SURFACING
RETAINING WALL	HAND DITCHING
RAILROADS	SPECIAL EXCAVATION
CREEK	SPECIAL FLOWING
DRY RUN	GUARD RAIL
DRAINAGE DITCH	CORRUGATED METAL CULVERT
POWER POLE LINE	SECTIONAL CONCRETE CULVERT
TELEPHONE OR TELEGRAPH LINE	SECTIONAL CONCRETE CULVERT (heavy type)
CULVERTS - PLAN	TON MILES
WITH ENDWALLS	TELEPHONE POLE
WITH WINEWALLS	POWER POLE
DROP INLET	PLACE
FENCE LINE	IN PLACE
GRAVEL PIT	REPLACE
SAND PIT	RIGHT
CLAY PIT	LEFT
ROCK QUARRY	INTERSECTION ANGLE
SPRINKLES	RADIUS
MARSH	TANGENT
BRUSH OR TIMBER	LENGTH OF CURVE
HEEDGE	POINT OF CURVE
ROCK LEDGE	POINT OF TANGENCY
SAND	POINT OF INTERSECTION
EDGE OF CUT	VERTICAL CURVE
TOE OF EMBANKMENT	BENCH MARK
RAILROAD R/W LINE	ELEVATION
BUILDING (One Story Frame)	ACRES



- INDEX OF SHEETS
- Sheet No. 1. Title Sheet and Layout Map
 - " No. 2. Typical Cross-Sections and Statement
 - " No. 3. Plan and Profile Sta. 671+00 to Sta. 716+77.7
 - " No. 4. to 12. Cross Sections

RECOMMENDED FOR APPROVAL

District Engineer
Public Roads Administration
Federal Works Agency

APPROVED

Division Engineer
Public Roads Administration
Federal Works Agency

Planned By *P.H. Carlson*

HIGHWAY ENGINEER FOR MORRISON COUNTY

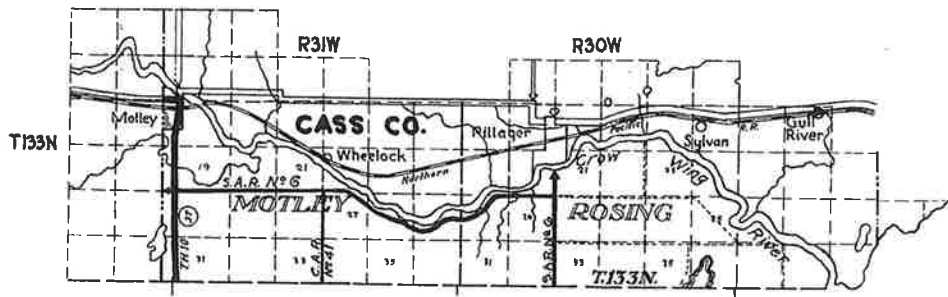
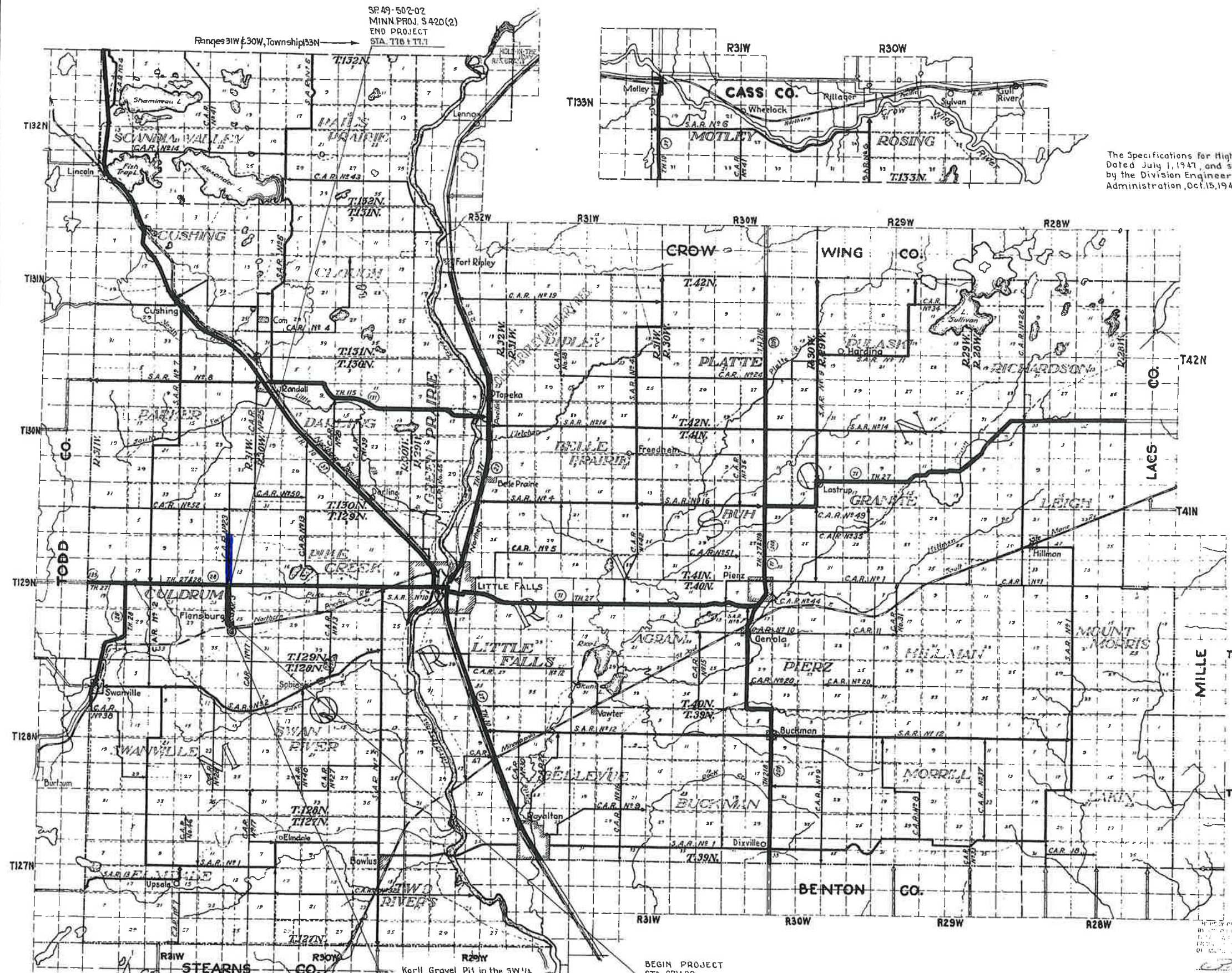
Recommended for Approval *Carlson* DISTRICT ENGINEER 2-23-50

Recommended for Approval *S.M. E...* ENGINEER OF COUNTY DIVISION 3-3-50

Approved *P.H. Carlson* DISTRICT ENGINEER OF PLANS AND SURVEYS 1950

I HEREBY CERTIFY THAT THIS PLAN WAS PREPARED BY ME OR UNDER MY SUPERVISION AND TO THE BEST OF MY KNOWLEDGE AND BELIEF IT COMPLIES WITH ALL THE REQUIREMENTS OF THE LAWS OF THE STATE OF MINNESOTA.

DATE Jan 30, 1950 REG. NO. 2451



Korll Gravel Pit in the SW 1/4 Sec. 25 T129N R31W Dead Haul to Sta. 689+00 = 0.54 Mi.

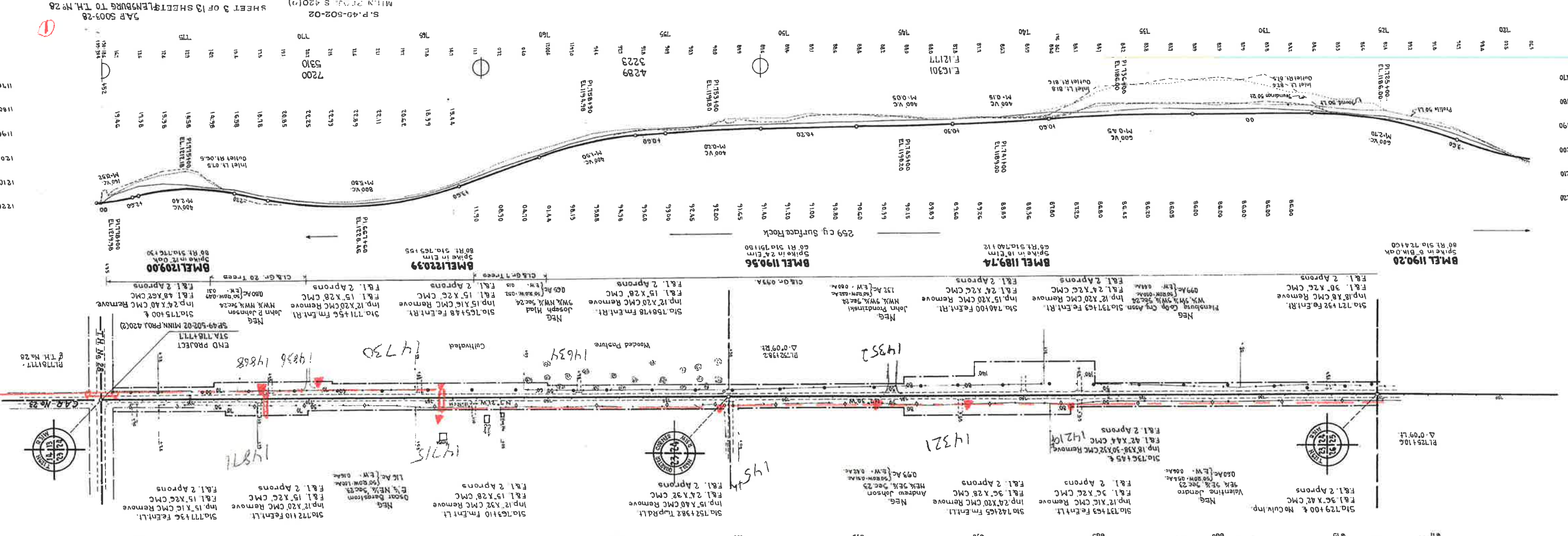
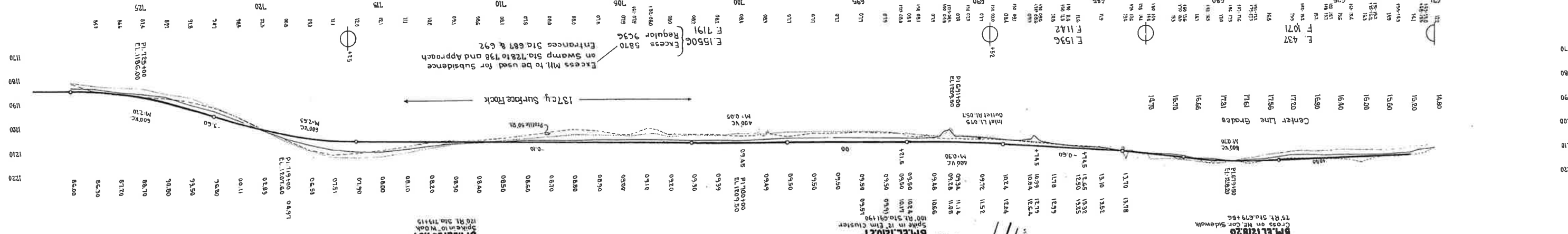
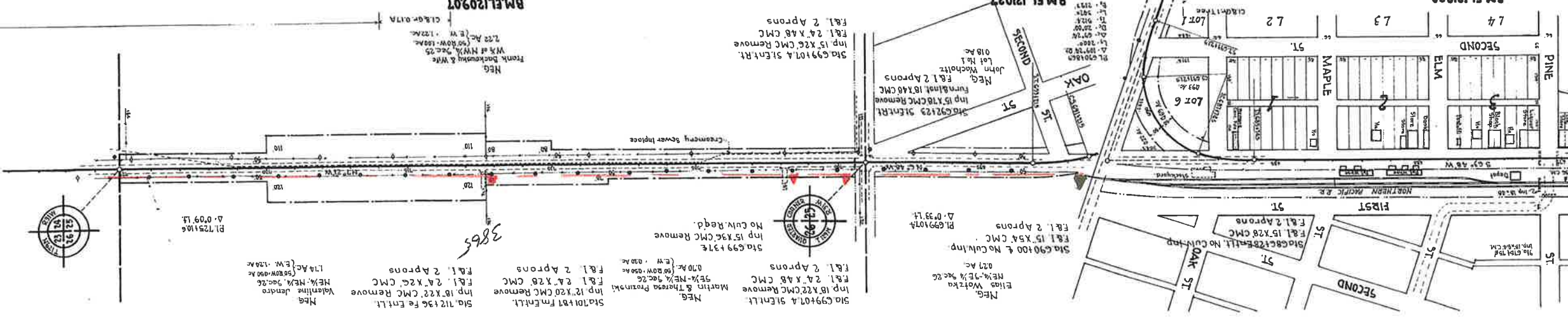
BEGIN PROJECT STA. 671+00

SP 49-502-02 MINN. PROJ. 3420(2)

P.W.S. 3 Item 522

BEGIN PROJECT
STA. 671+00
SP. 49-502-02
MINN. PROJ. S420 (2)

FLensburg



PI. 0+00
Δ = 0°28' RT.

PI. 26+21.7
Δ = 0°21' LT.

STA. 0+30 ±
INP. 24" X 30" CMC. REMOVE
DO NOT DISTURB

STA. 2+75 FE. ENT. LT.
INP. 10" X 20" CMC. REMOVE
F&I. 15" X 22" SCP.
F&I. 2 APRONS

STA. 12+90 FM. ENT. LT.
INP. 12" X 20" CMC. REMOVE
F&I. 15" X 22" SCP.
F&I. 2 APRONS

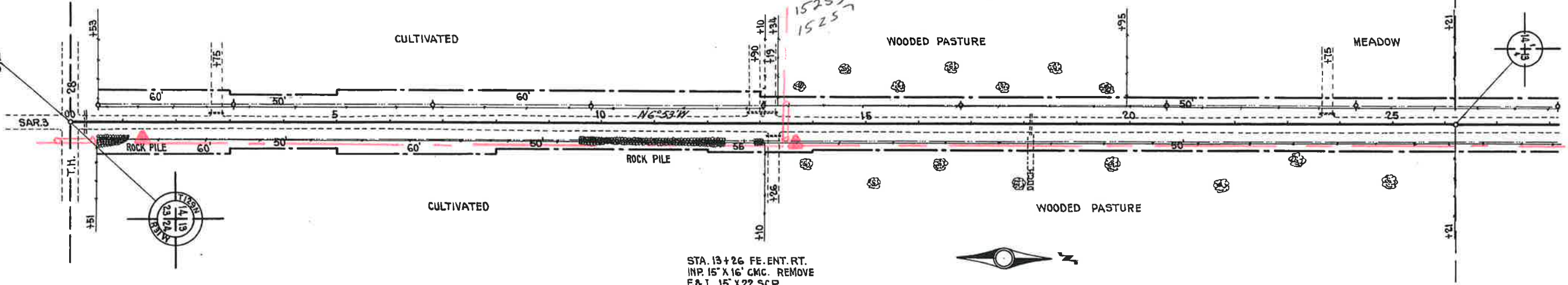
STA. 13+19 FM. ENT. LT.
INP. 12" X 20" CMC. REMOVE
F&I. 15" X 22" SCP.
F&I. 2 APRONS

STA. 18+15 ±
INP. 24" X 38" CMC. REMOVE
F&I. 30" X 38" SCP.
F&I. 2 APRONS

STA. 23+75 FE. ENT. LT.
INP. 18" X 16" CMC. REMOVE
F&I. 15" X 22" SCP.
F&I. 2 APRONS

STA. 13+26 FE. ENT. RT.
INP. 15" X 16" CMC. REMOVE
F&I. 15" X 22" SCP.
F&I. 2 APRONS

BEG. SP. 49-523-01
S420(1) STA. 0+00

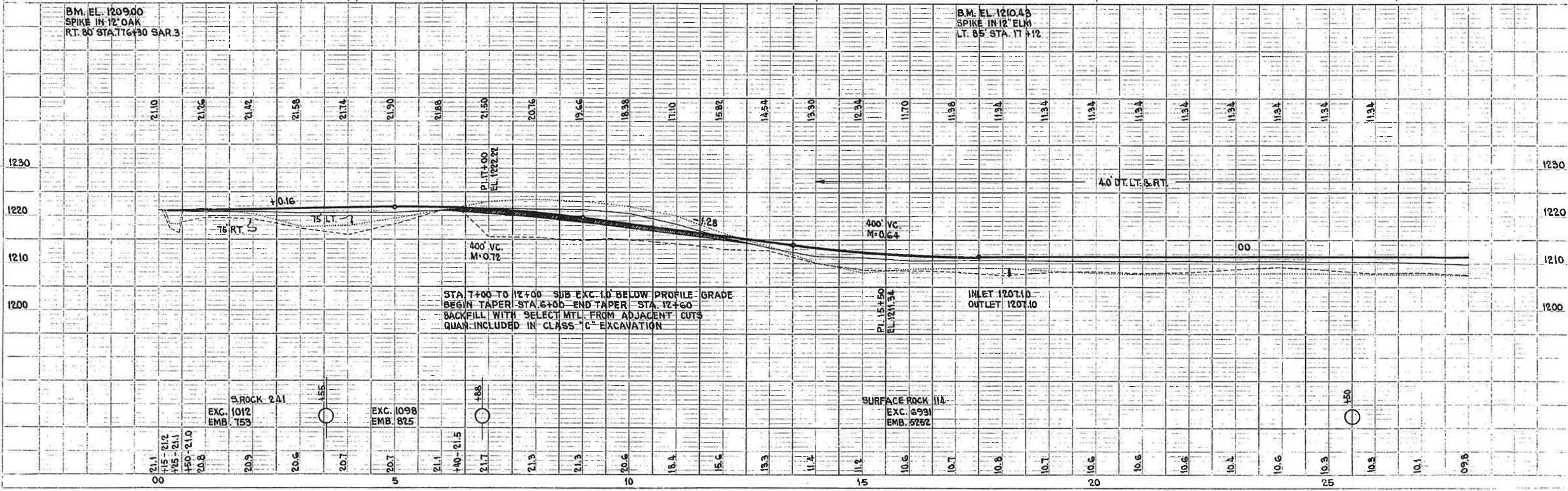


CL & GR. RT. +18
 CL & GR. 0.05 A. RT.
 CL & GR. 0.05 A. LT.
 CL & GR. 0.30 A. RT. +45

2

B.M. EL. 1209.00
SPIKE IN 12" OAK
RT. 80' STA. 116+30 SAR. 3

B.M. EL. 1210.45
SPIKE IN 12" ELM
LT. 85' STA. 17+12



PI. 26+21.7
Δ=0°21' LT.

PI. 52+36.2
Δ=0°10' RT.

30+82 ±
INP 24' X 40' CMC REMOVE
F&I. 24' X 44' SCP.
F&I. 2 APRONS

31+58 FE. ENT. LT.
INP 12' X 16' CMC REMOVE
F&I. 15' X 22' SCP.
F&I. 2 APRONS

39+45 TWP. RD. LT.
NO CULV. INP.
NO CULV. REQ'D

44+33 FE. ENT. LT.
INP 10' X 12' CMC. REMOVE
F&I. 15' X 22' SCP.
F&I. 2 APRONS

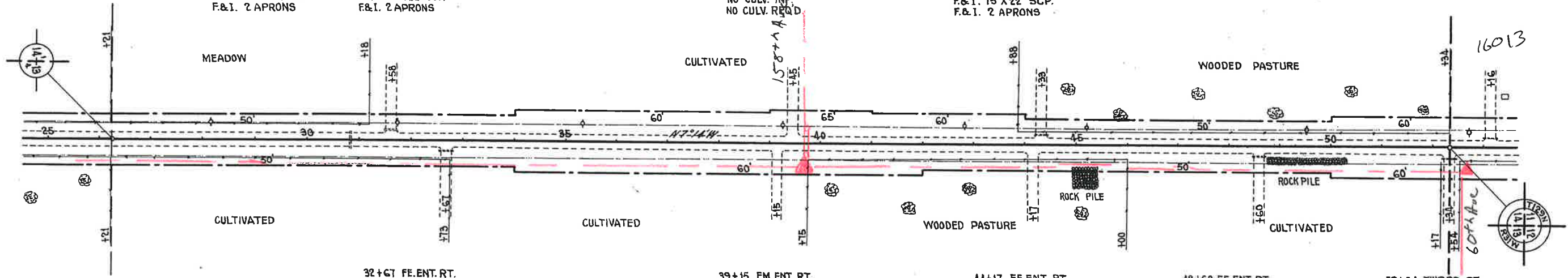
32+67 FE. ENT. RT.
INP 12' X 20' CMC REMOVE
F&I. 15' X 22' SCP.
F&I. 2 APRONS

39+15 FM. ENT. RT.
NO CULV. INP.
NO CULV. REQ'D.

44+17 FE. ENT. RT.
NO CULV. INP.
F&I. 15' X 22' SCP.
F&I. 2 APRONS

48+60 FE. ENT. RT.
INP 20' X 18' CMC. REMOVE
F&I. 15' X 22' SCP.
F&I. 2 APRONS

52+34 TWP. RD. RT.
INP 15' X 30' CMC. REMOVE
F&I. 18' X 26' SCP.
F&I. 2 APRONS



CL&GR. 2.1 RT.

CL & GR. 0.05 A. RT.

CL & GR. 0.05 A. RT.

3

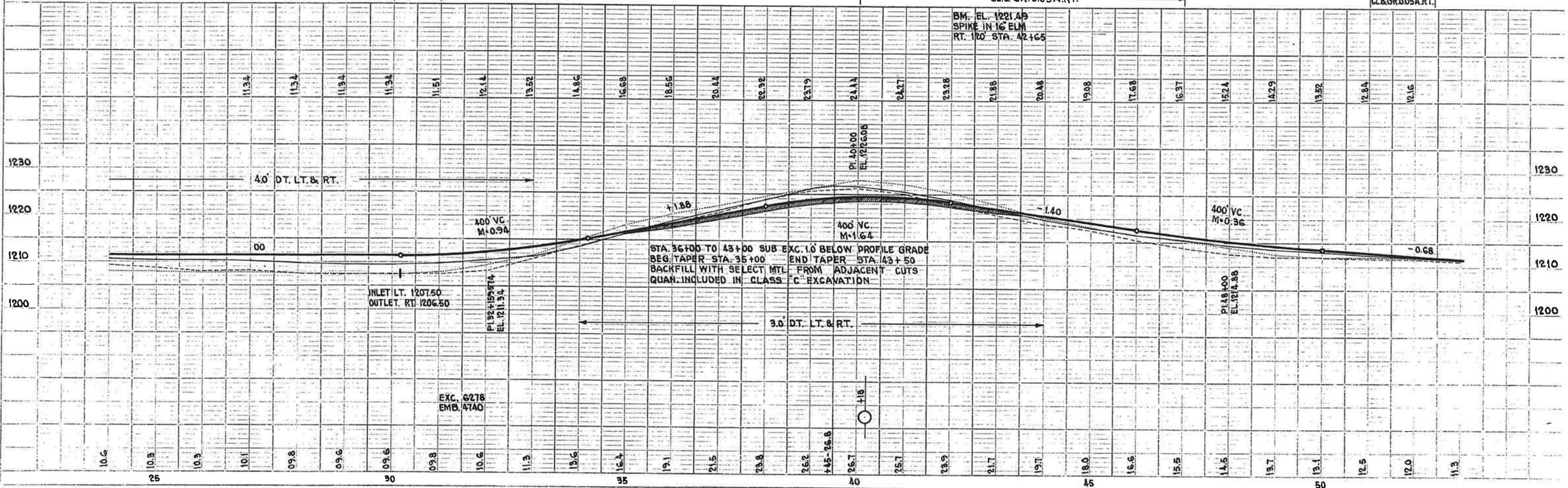


PLATE 1 - PLAN PROFILE, C. & G. STANDARDS
FOR FEDERAL ROAD DISTRICTS