

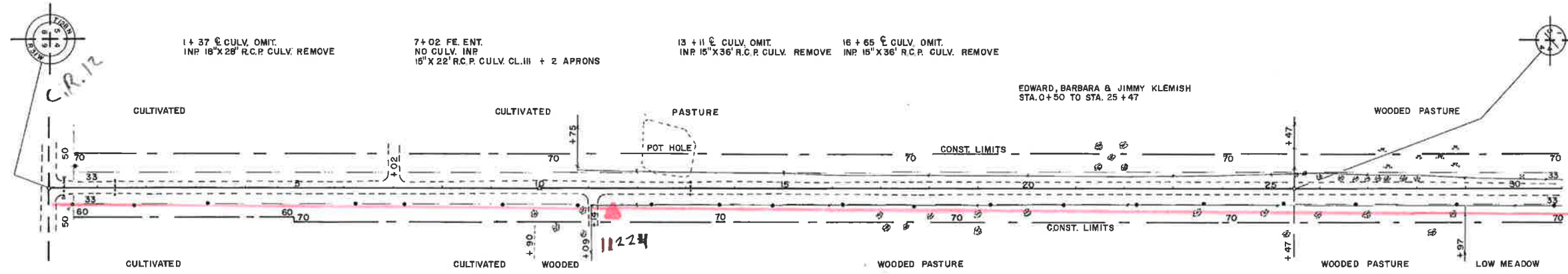


BASIC WIDTH OF RIGHT OF WAY IS 66 FT.  
ALL RIGHT OF WAY OUTSIDE OF 66 FT.  
IS COVERED BY SLOPE EASEMENT.

P.I. 0+00

P.O.T. 10+00

P.I. 25+47.2  
Δ = 0° 12' LT.



1+37 CULV. OMIT.  
INP 16'X28' R.C.P. CULV. REMOVE

7+02 FE ENT.  
NO CULV. INP  
15'X22' R.C.P. CULV. CL.III + 2 APRONS

13+11 CULV. OMIT.  
INP 15'X36' R.C.P. CULV. REMOVE

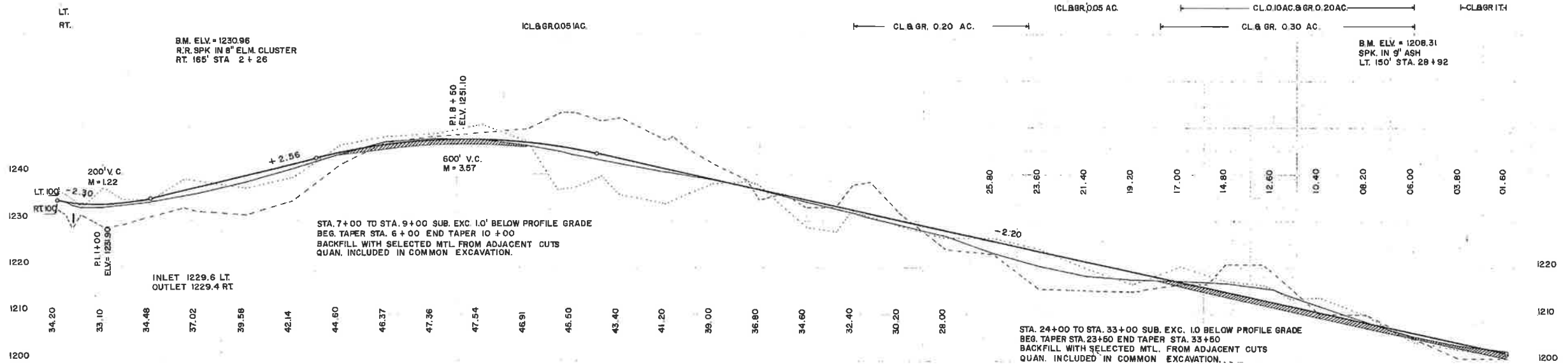
16+65 CULV. OMIT.  
INP 15'X36' R.C.P. CULV. REMOVE

0+33 CULV.  
INP 15'X32' R.C.P. CULV. + 2 APRONS REMOVE  
24'X48' R.C.P. CULV. CL.III + 2 APRONS

11+14 FE ENT.  
NO CULV. INP  
15'X22' R.C.P. CULV. CL.III + 2 APRONS

ARTHUR & ESTHER BLIESE  
STA 0+50 TO STA. 11+09

RUTH DAHN & EDWARD, BARBARA & JIMMY KLEMISH  
STA. 11+09 TO STA 50+09



B.M. ELV. = 1230.96  
R.R. SPK IN 8' ELM. CLUSTER  
RT. 165' STA. 2+26

1 CL. 6 GR. 0.05 AC.

CL. 6 GR. 0.20 AC.

1 CL. 6 GR. 0.05 AC.

CL. 6 GR. 0.30 AC.

1 CL. 6 GR. 0.10 AC.

B.M. ELV. = 1208.31  
SPK. IN 9' ASH  
LT. 150' STA. 28+92

STA. 7+00 TO STA. 9+00 SUB. EXC. 1.0' BELOW PROFILE GRADE  
BEG. TAPER STA. 6+00 END TAPER 10+00  
BACKFILL WITH SELECTED MTL. FROM ADJACENT CUTS  
QUAN. INCLUDED IN COMMON EXCAVATION.

INLET 1229.6 LT.  
OUTLET 1229.4 RT.

STA. 24+00 TO STA. 33+00 SUB. EXC. 1.0' BELOW PROFILE GRADE  
BEG. TAPER STA. 23+50 END TAPER STA. 33+50  
BACKFILL WITH SELECTED MTL. FROM ADJACENT CUTS  
QUAN. INCLUDED IN COMMON EXCAVATION.

3.5' DT. LT. & RT.

0+34.2  
+16=33.8  
+20=33.1  
+30=32.6

32.8  
+37=33.8

33.9  
+70=35.2  
+75=35.8

39.2  
+41=41.1

44.3  
+46=46.8

47.6  
+47=47.5

46.2  
+69=45.0  
+44=44.3

+59=43.2  
+42=42.4

40.5  
+10=40.3  
+41=38.9

39.0  
+73=37.3  
+36=36.6

+50=35.3  
+34=34.1

+65=32.6  
+31=31.9  
+38=30.9

29.2  
+26=26.8

23.2  
+20=20.2

18.3  
+17=17.5

17.3  
+60=16.9  
+16=16.6

+74=15.9  
+15=15.4  
+40=13.9

11.9  
+08=08.4

05.4  
+03=03.4

02.4  
+02=02.4

CO. RD. - 220

73 - 220

SHEET 3 OF 37 SHEETS

BASIC WIDTH OF RIGHT OF WAY IS 66 FT.  
ALL RIGHT OF WAY OUTSIDE OF 66 FT.  
IS COVERED BY SLOPE EASEMENT.

P.I. 46 + 16.3  
 $\Delta = 4^\circ 22' \text{ LT.}$

P.I. 62 + 69.7  
 $\Delta = 2^\circ 25' 30'' \text{ LT.}$

HERBERT & ANNICE BESEMAN  
STA. 32+75 TO STA. 36+70

WALTER & ESTHER MILLER  
STA. 28+47 TO STA. 32+75  
STA. 36+70 TO STA. 50+96

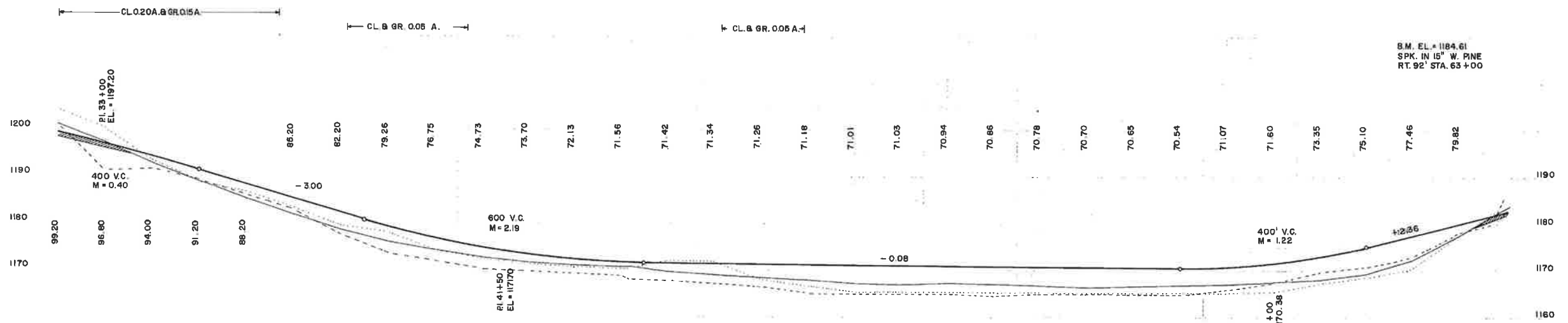
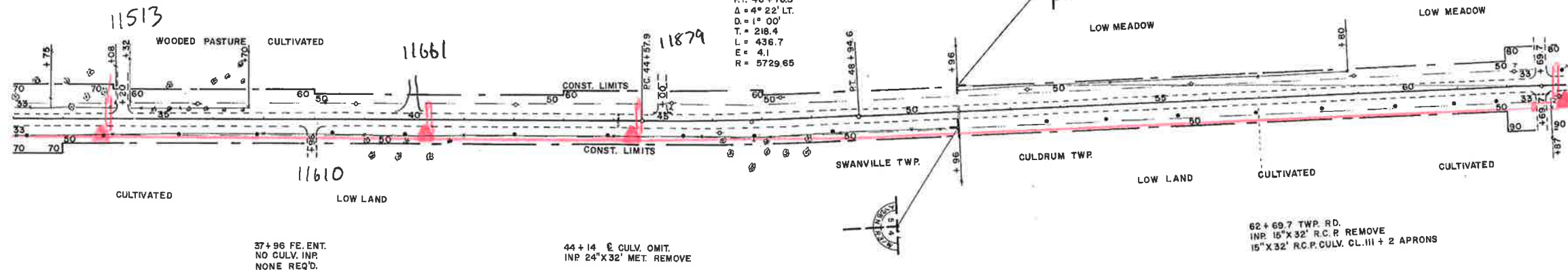
34+20 FM. ENT.  
INP. 12" X 20" R.C.P. CULV. REMOVE  
15" X 26" R.C.P. CULV. CL. III + 2 APRONS

45+00 FM. ENT.  
INP. 16" X 28" MET. REMOVE  
18" X 26" R.C.P. CULV. CL. III + 2 APRONS

P.I. 46 + 76.3  
 $\Delta = 4^\circ 22' \text{ LT.}$   
D. = 1" 00"  
T. = 218.4  
L. = 436.7  
E. = 4.1  
R. = 5729.65

62 + 69.7 TWP RD.  
NO CULV. INP.  
15" X 32" R.C.P. CULV. CL. III + 2 APRONS

*Badger Creek Rd.*



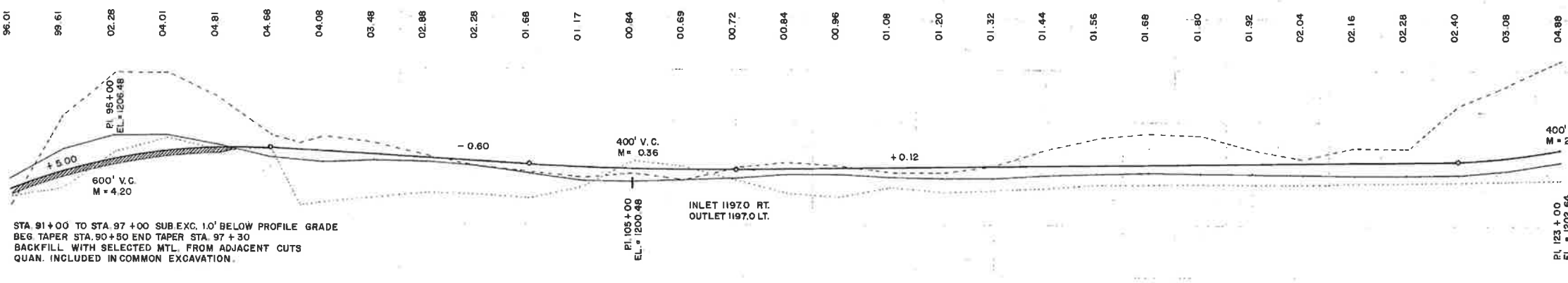
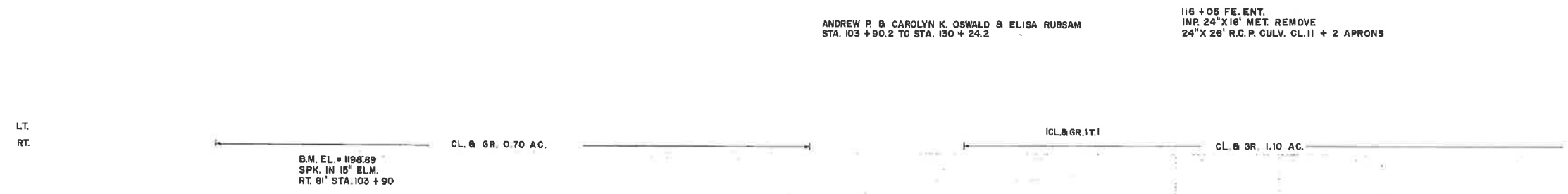
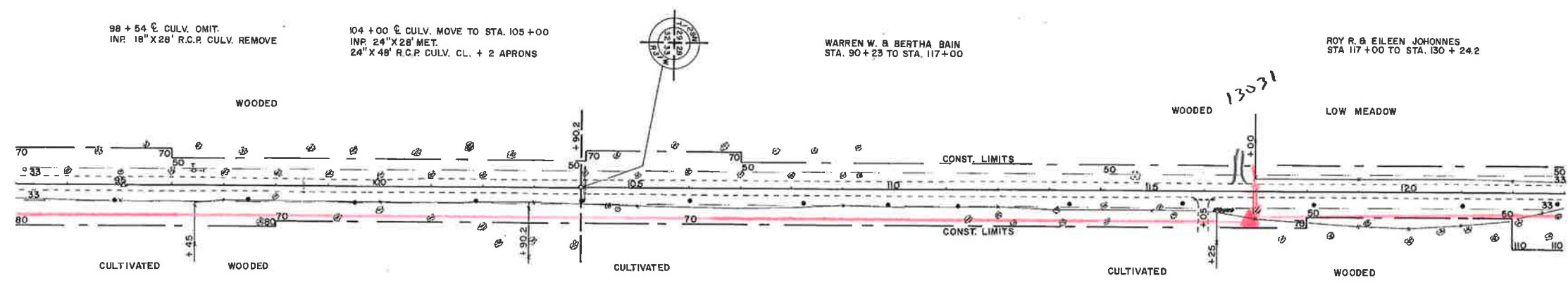
176 = 01.6	97.0	92.5	88.8	85.0	81.6	78.4	75.9	74.3	72.7	71.9	71.1	70.8	69.8	69.3	68.7	68.0	67.1	67.4	67.2	67.2	66.9	66.7	66.8	67.0	67.3	67.8	68.6	69.6	72.7	77.9	+ 69.7 = 82.1
01.0			3.5					4.0				1.4	4.6					8.0					8.5				6.0				
							EXC. 10,363 EMB. 7,589																EXC. 30,070 EMB. 21,828								





P.O.T. 95 + 07.1

PI = 103 + 90.2  
Δ = 0° 26' RT.

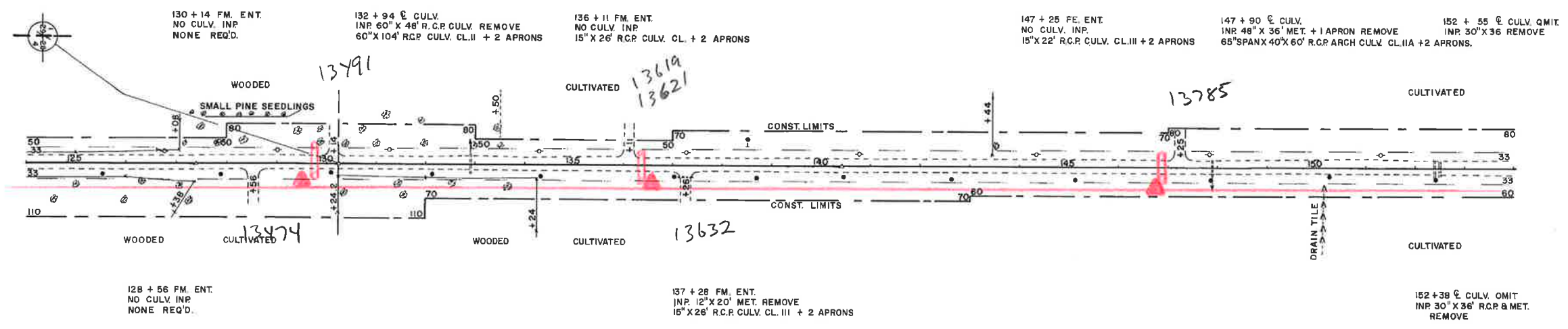


P.O.T. 127 + 39.40  
 P.I. 130 + 24.2  
 $\Delta = 0^{\circ} 02' 30''$  LT.  
 R.O.T. 140 + 41.2

BASIC WIDTH OF RIGHT OF WAY IS 66 FT.  
 ALL RIGHT OF WAY OUTSIDE OF 66 FT.  
 IS COVERED BY SLOPE EASEMENT.

ARNOLD & CLARA EPLING & RUDOLPH & CLARA SUKKE  
 STA 130+24.2 TO STA. 143+44

VERDELL & IDA MAY PFEIFFER  
 STA 143+44 TO STA. 169+83



130 + 14 FM. ENT.  
 NO CULV. INP.  
 NONE REQ'D.

132 + 94 C. CULV.  
 INP. 60" X 48" R.C.P. CULV. REMOVE  
 60" X 104" R.C.P. CULV. CL.II + 2 APRONS

136 + 11 FM. ENT.  
 NO CULV. INP.  
 15" X 26" R.C.P. CULV. CL. + 2 APRONS

147 + 25 FE. ENT.  
 NO CULV. INP.  
 15" X 22" R.C.P. CULV. CL.III + 2 APRONS

147 + 90 C. CULV.  
 INP. 48" X 36" MET. + 1 APRON REMOVE  
 65" SPAN X 40" X 60" R.C.P. ARCH CULV. CL.III + 2 APRONS.

152 + 55 C. CULV. QMIT  
 INP. 30" X 36" REMOVE

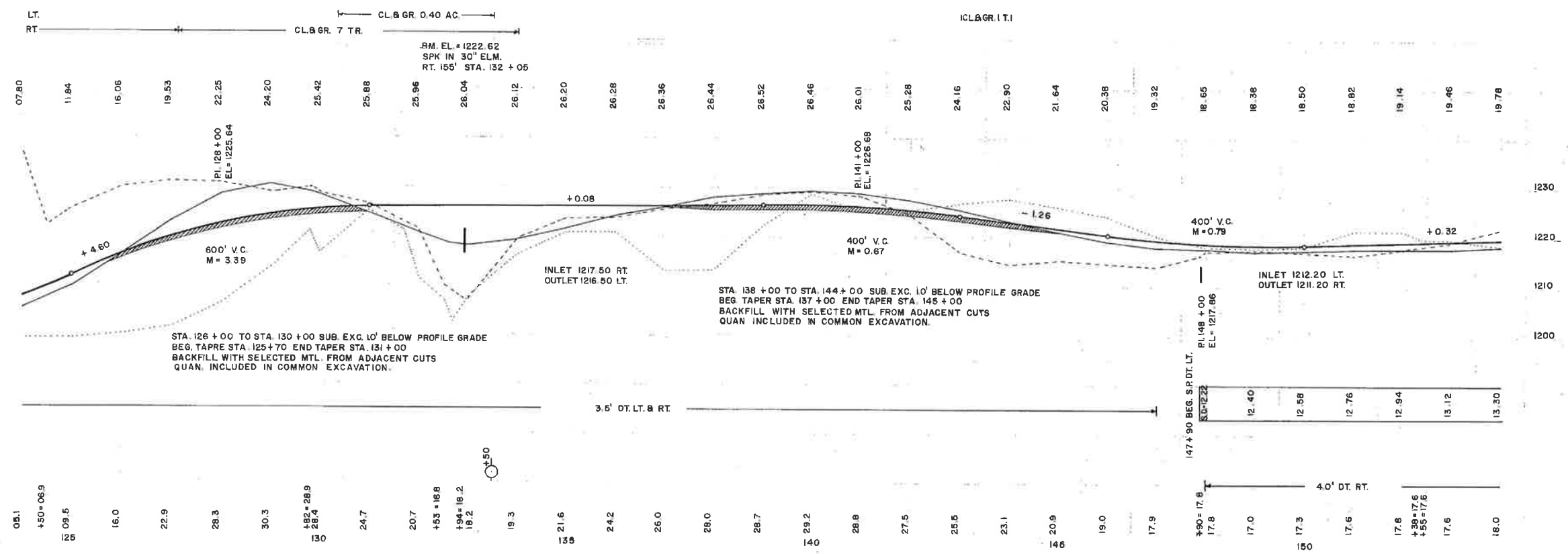
128 + 56 FM. ENT.  
 NO CULV. INP.  
 NONE REQ'D.

137 + 28 FM. ENT.  
 INP. 12" X 20" MET. REMOVE  
 15" X 26" R.C.P. CULV. CL. III + 2 APRONS

152 + 38 C. CULV. OMIT  
 INP. 30" X 36" R.C.P. & MET.  
 REMOVE

OTTO & HULDA LADWIG  
 STA. 130+24.2 TO STA. 143+44

JOHN & ROSEMARY CAPKO & ANNA CAPKO  
 STA. 143+44 TO STA. 169+83



146+03.7  
 05.1  
 150+06.9  
 12 09.5  
 16.0  
 22.9  
 28.3  
 30.3  
 182+28.9  
 28.4  
 130  
 24.7  
 20.7  
 153+18.8  
 194+18.2  
 18.2  
 19.3  
 21.6  
 24.2  
 26.0  
 28.0  
 28.7  
 29.2  
 28.8  
 27.5  
 25.5  
 23.1  
 20.9  
 19.0  
 17.9  
 147+90 BEG. S.P. DT. LT.  
 140+12.22  
 147+90 BEG. S.P. DT. LT.  
 17.8  
 17.0  
 17.3  
 17.6  
 17.6  
 139+17.6  
 155+17.6  
 17.6  
 18.0

STA. 126+00 TO STA. 130+00 SUB. EXC. 10' BELOW PROFILE GRADE  
 BEG. TAPER STA. 125+70 END TAPER STA. 131+00  
 BACKFILL WITH SELECTED MTL. FROM ADJACENT CUTS  
 QUAN. INCLUDED IN COMMON EXCAVATION.

INLET 1217.50 RT.  
 OUTLET 1216.50 LT.

STA. 136+00 TO STA. 144+00 SUB. EXC. 10' BELOW PROFILE GRADE  
 BEG. TAPER STA. 137+00 END TAPER STA. 145+00  
 BACKFILL WITH SELECTED MTL. FROM ADJACENT CUTS  
 QUAN. INCLUDED IN COMMON EXCAVATION.

INLET 1212.20 LT.  
 OUTLET 1211.20 RT.

PI 156 + 61.5  
 $\Delta = 0^\circ 43' 30''$  LT.

BASIC WIDTH OF RIGHT OF WAY IS 66 FT.  
 ALL RIGHT OF WAY OUTSIDE OF 66 FT.  
 IS COVERED BY SLOPE EASEMENT.

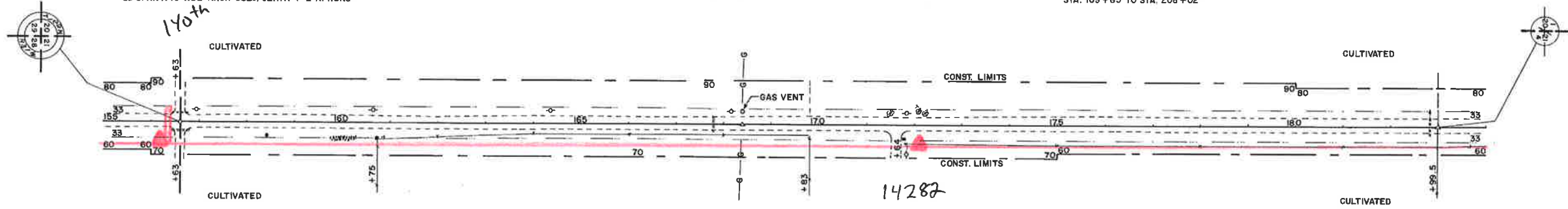
POT. 168 + 40.0 @  $\frac{1}{2}$   
 NORTHERN NATURAL GASLINE

P.O.T. 182 + 99.5

156 + 63 TWP RD.  
 INR 48" X 38" MET. + 1 APRON REMOVE  
 65' SPAN X 40" X 32" ARCH CULV. CL. II + 2 APRONS

167 + 77  $\frac{1}{2}$  CULV. OMIT.  
 INR 18" X 35" MET. REMOVE

OTTO & CLARA TRAMPE  
 STA. 169 + 83 TO STA. 208 + 02



156 + 63 TWP RD.  
 INR 15" X 32" R.C.P. CULV. REMOVE  
 24" X 32" R.C.P. CULV. CL. II + 2 APRONS

171 + 64 FM. ENT.  
 NO CULV. INR  
 15" X 26" R.C.P. CULV. CL. III + 2 APRONS

182 + 81  $\frac{1}{2}$  CULV.  
 INR 16" X 34" MET. REMOVE  
 24" X 58" R.C.P. CULV. CL. III + 2 APRONS

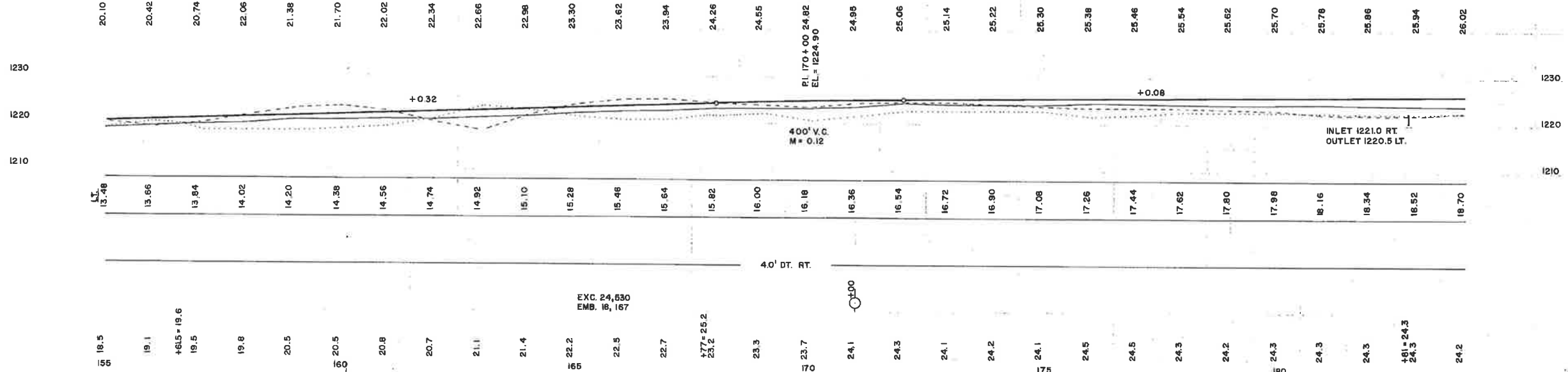
JEROME & MARYANNE CICHON & HURBERT A. & INEZ BERGSTROM  
 STA. 169 + 83 TO STA. 182 + 99.5

LT.  
 RT.

B.M. EL. = 1222.50  
 SPK IN RP  
 RT. 155' STA. 156 + 65

B.M. EL. = 1225.22  
 SPK IN 18" ELM.  
 RT. 243' STA. 169 + 70

CL. & GR. 4 TR.



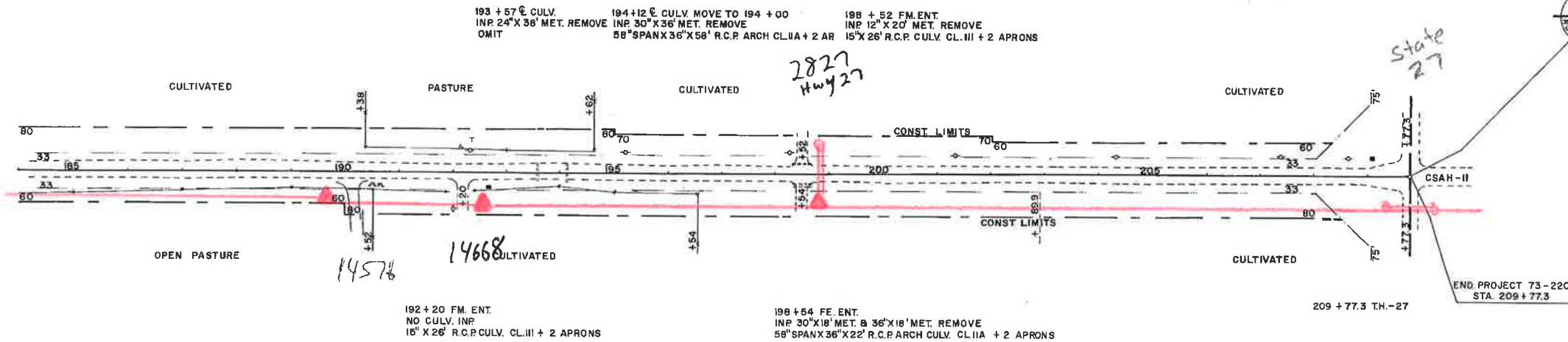
CO. RD. - 220

73 - 220

SHEET 8 OF 37 SHEETS

BASIC WIDTH OF RIGHT OF WAY IS 66 FT.  
ALL RIGHT OF WAY OUTSIDE OF 66 FT.  
IS COVERED BY SLOPE EASEMENT.

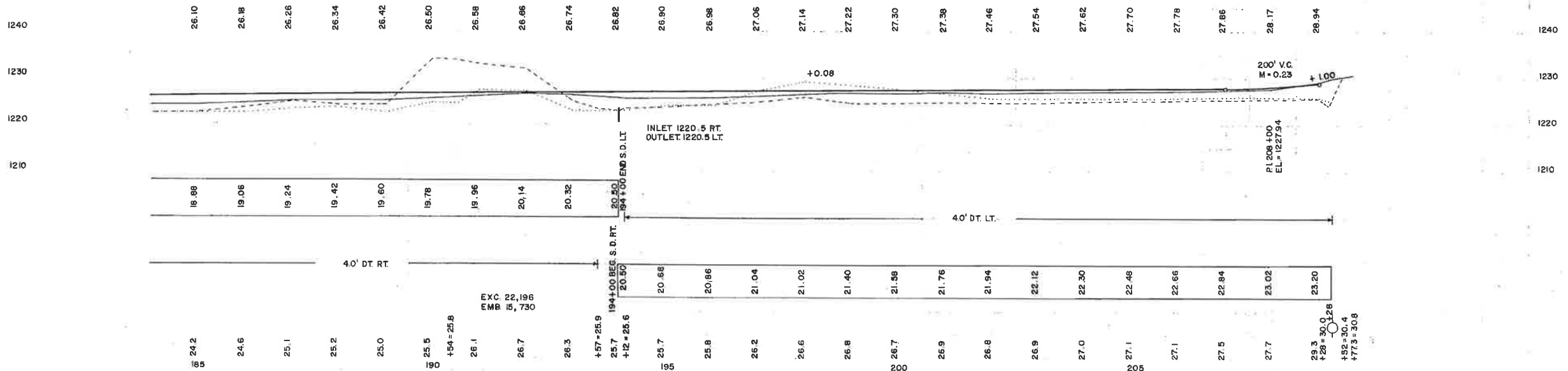
P 1 209 + 77.3



LT.  
RT.

GR 2 TR. 1

B.M. EL = 1227.94  
USGS BRASS MON.  
LT. 90' STA 313 + 37 ON T.H. - 27



CO. RD. - 220

73 - 220

SHEET 9 OF 37 SHEETS