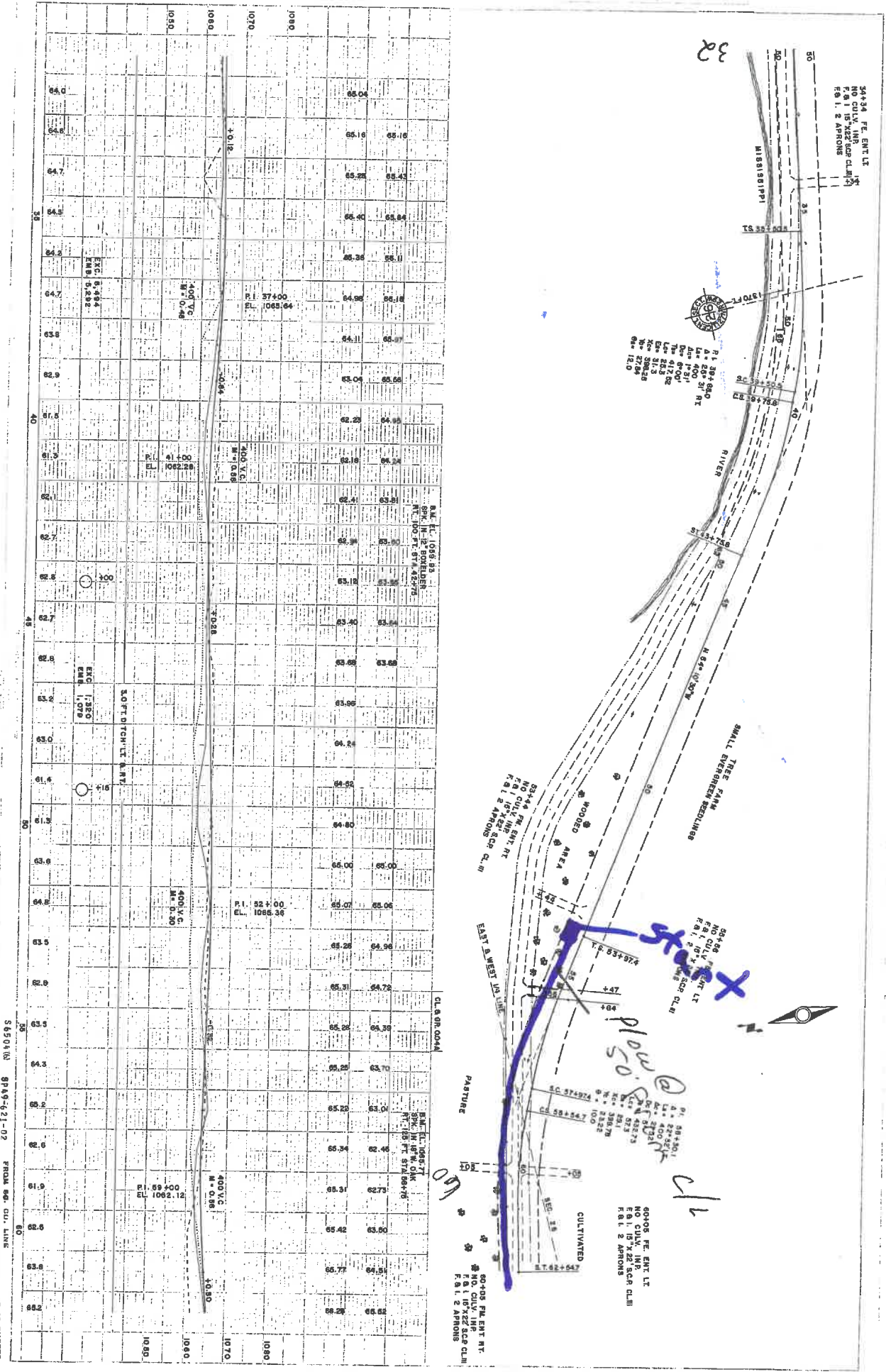


1 of 7



32

54+34 FE. ENT LT
 NO CULV. IMP.
 F&I 15' X 22' SCA CLM
 F&I 2 APRONS

R1 384+850
 A = 384+850
 Lot 400 S1 RT
 Dist P 81'
 The 41' 20"
 Lot 25.3
 Sec 50.3
 Twp 27S
 R. 12.0

53+44 PM. ENT. RT
 NO CULV. IMP.
 F&I 15' X 22' SCA CLM
 F&I 2 APRONS

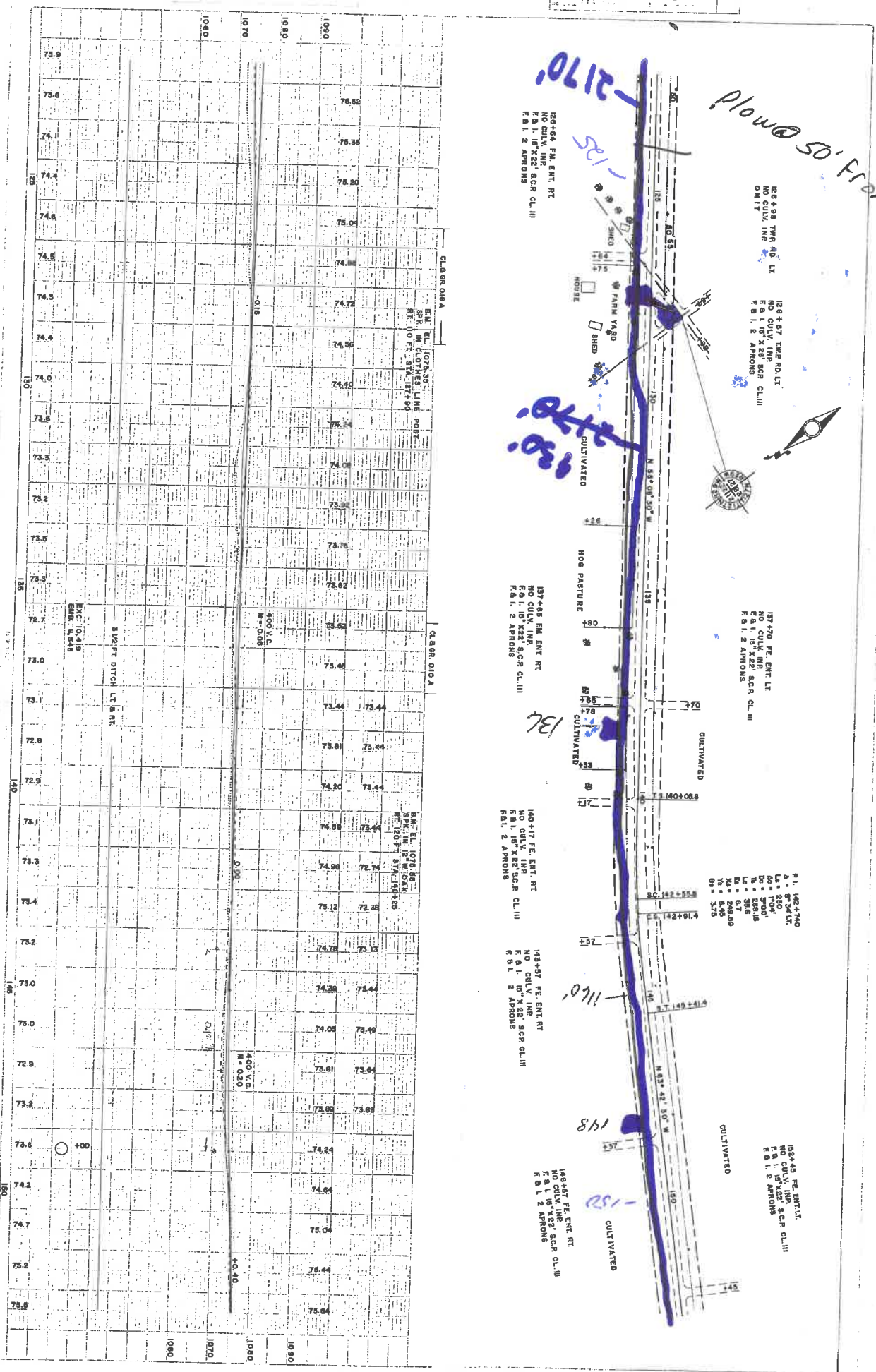
54+56 PM. ENT LT
 NO CULV. IMP.
 F&I 15' X 22' SCA CLM
 F&I 2 APRONS

50+05 FE. ENT LT
 NO CULV. IMP.
 F&I 15' X 22' SCA CLM
 F&I 2 APRONS

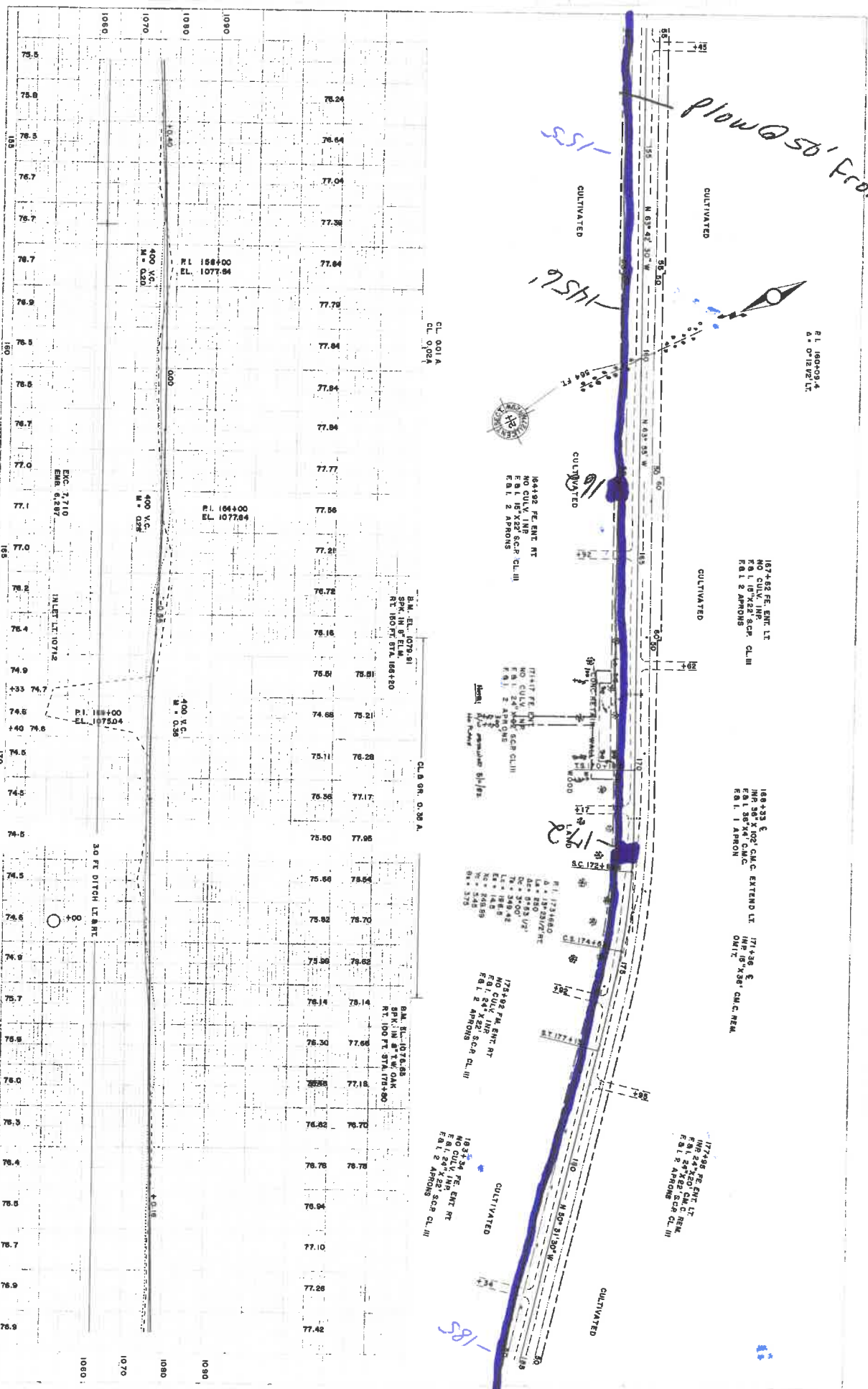
50+05 PM. ENT RT
 NO CULV. IMP.
 F&I 15' X 22' SCA CLM
 F&I 2 APRONS

56501 (W) 8P49-621-02 FROM 86- CU. LINE SHEET 4 OF 32 SHEETS
 1000000 20

Plowed 50' From d/c



4 of 7



Flow @ 50' From c/l

155

151

5 of 7

R.L. 160409.4
E.L. 107272.1

167450 CE. ENT. LT.
NO CULV. IMP.
F&I 10'x22' ASP. CL. III
F&I 2 APRONS

168435 E
IMP. 36' X 102' C.M.C. EXTEND LT.
IMP. 18' X 38' CUR. C. REAR
F&I 1 APRON

177495 PE. ENT. LT.
F&I 24' X 22' C.M.C. REAR
F&I 8' X 24' ASP. CUR. CL. III

164492 PE. ENT. RT.
NO CULV. IMP.
F&I 10' X 22' ASP. CL. III
F&I 2 APRONS

171472 FE. ENT.
NO CULV. IMP.
F&I 12' X 102' ASP. CL. III
F&I 2 APRONS

173492 PE. ENT. RT.
NO CULV. IMP.
F&I 10' X 22' ASP. CL. III
F&I 2 APRONS

163434 PE. ENT. RT.
NO CULV. IMP.
F&I 10' X 22' ASP. CL. III
F&I 2 APRONS

CL. 001A
CL. 002A

CL. 89N. 0.38 A.

S.M. R.L. 1078.81
S.P.K. IN 8' T.W. OAK
RT. 100 FT. STA. 164+80

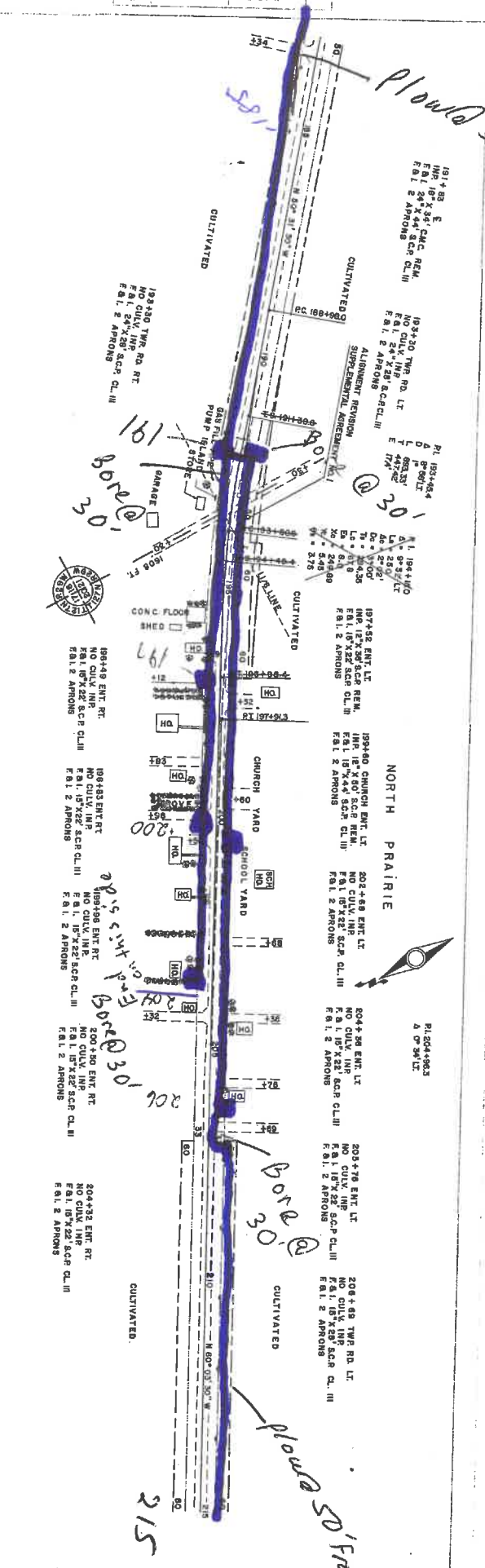
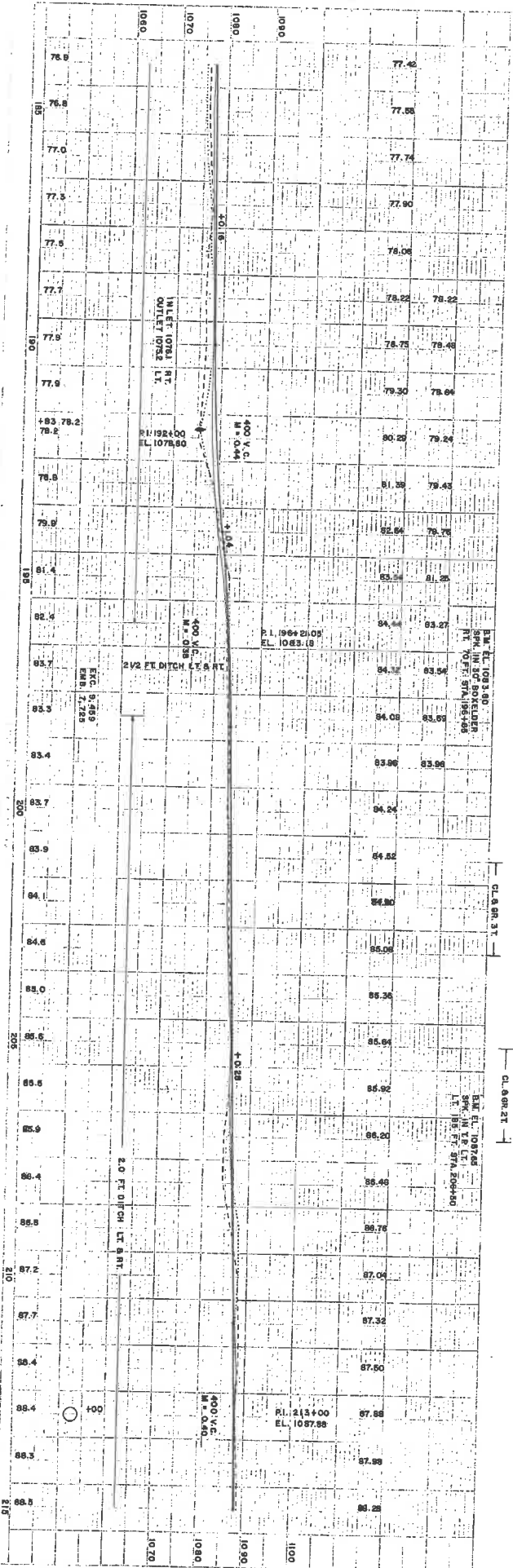
S.M. R.L. 1076.68
S.P.K. IN 8' T.W. OAK
RT. 100 FT. STA. 173+90

R.L. 168400
E.L. 1077.84

R.L. 164400
E.L. 1077.84

R.L. 168400
E.L. 1075.04

1080	75.5	76.24
1070	75.8	76.64
1080	76.5	77.04
1090	76.7	77.38
1080	76.7	77.84
1070	76.9	77.75
1080	76.5	77.94
1090	76.5	77.84
1070	76.7	77.84
1080	77.0	77.77
1070	77.1	77.56
1080	77.0	77.21
1070	78.2	76.72
1080	76.4	76.16
1090	74.9	75.81
1070	74.3	75.21
1080	74.6	76.28
1090	74.0	76.56
1070	74.5	77.17
1080	74.5	75.80
1090	74.5	77.95
1070	74.5	75.86
1080	74.5	78.54
1070	74.6	75.82
1080	74.6	76.70
1070	74.6	73.96
1080	74.9	76.62
1070	75.7	76.14
1080	75.9	75.14
1070	76.0	77.66
1080	76.0	77.12
1070	76.3	76.82
1080	76.3	76.70
1070	76.5	76.82
1080	76.4	76.76
1070	76.5	76.76
1080	76.5	76.94
1070	76.7	77.10
1080	76.9	77.26
1070	76.9	77.42
1080	76.9	77.42



Plowd 50' From c/c

Bore @ 30'

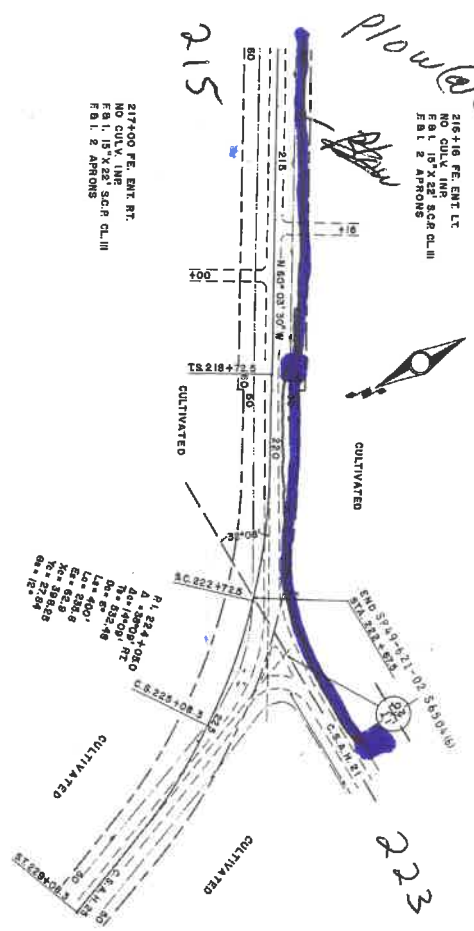
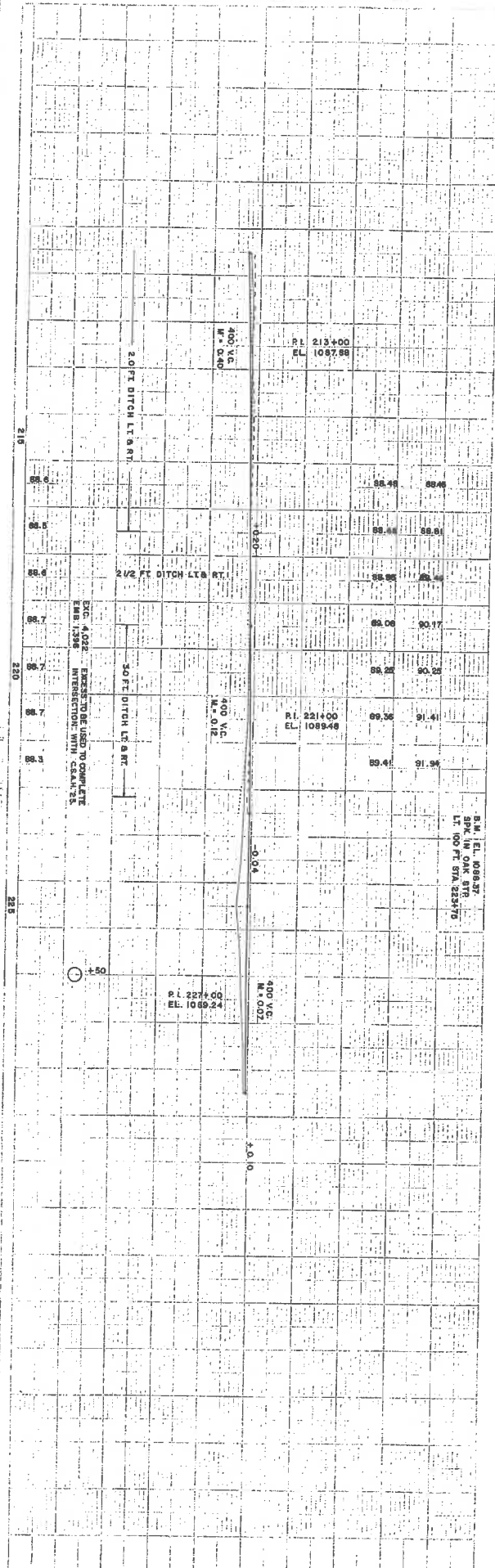
NORTH PRAIRIE

LOF 7

Bore @ 30'

Plowd 50' From c/c

215



Plow @ 50' From CL

215+16 FE. ENT. LT.
 NO CULV. IMP. S&R CL. III
 F.B.I. 2' APPROX

217+00 FE. ENT. RT.
 NO CULV. IMP. S&R CL. III
 F.B.I. 15' X 22' S.C.R. CL. III
 F.B.I. 2' APPROX

R.L. 224+00.00
 EL. 1089.48
 M = 0.12
 L = 400'
 Sta. 223+70
 Sta. 224+70
 Sta. 225+70

S.M. EL. 1089.27
 SPL. IN OAK STR.
 LT. 100 FT. STA. 223+70

ENC. 4-022 EXERCISE OF USES OF ADJACENT
 EMB. 1-1396 INTERSECTION WITH C&A 1/2