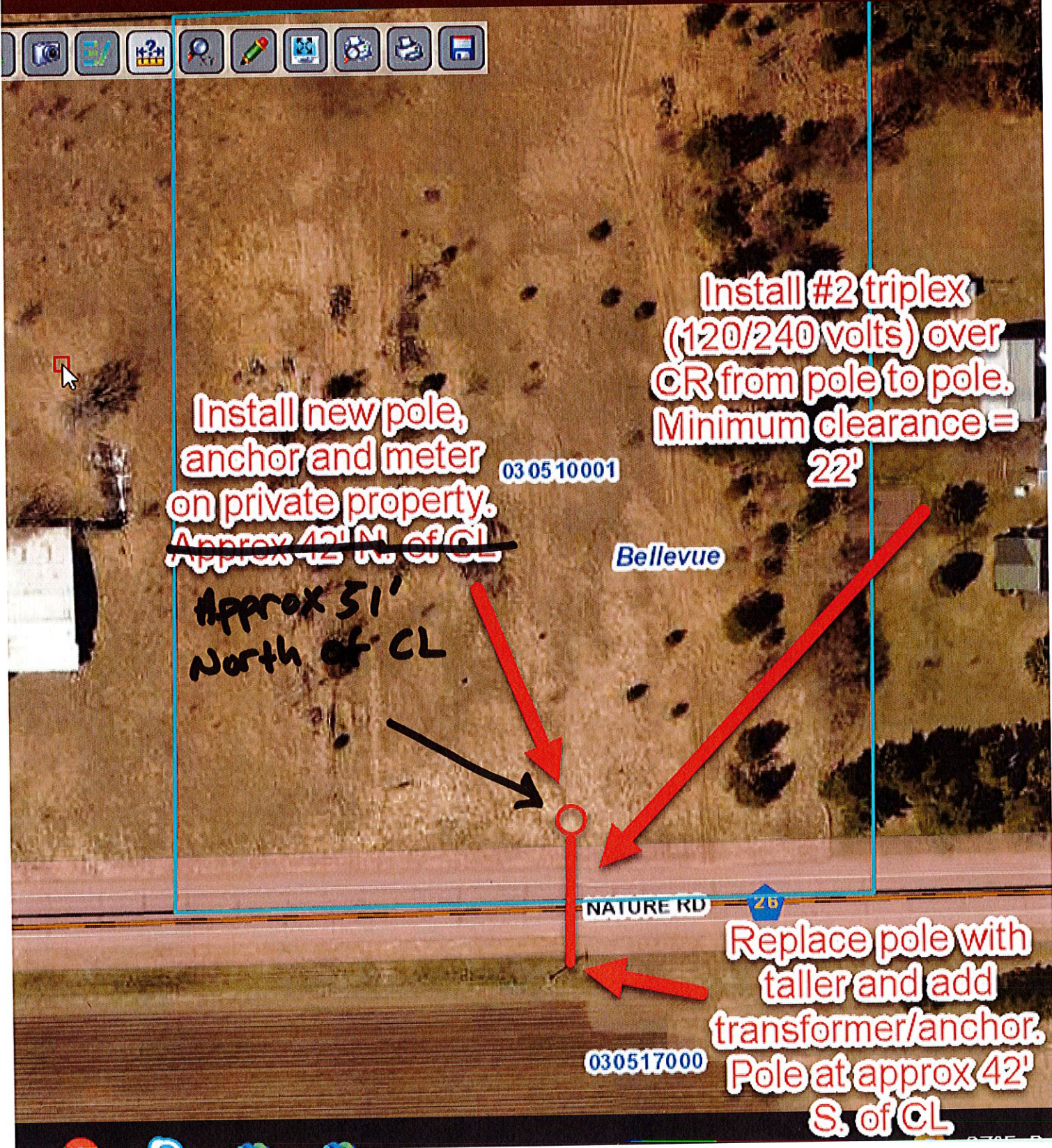


N

Comp Results Sales Results Sales List Report Pictometry Imagery More



Install new pole, anchor and meter on private property. Approx 42' N. of CL

03 05 10001

Install #2 triplex (120/240 volts) over CR from pole to pole. Minimum clearance = 22'

Approx 51' North of CL

Bellevue

NATURE RD

26

Replace pole with taller and add transformer/anchor. Pole at approx 42' S. of CL

030517000