

MINNESOTA DEPARTMENT OF TRANSPORTATION
S.P. 4911-15 T.H. 25
 LOCATED ON T.H. 25 FROM 0.25 MILES N OF SKUNK RIVER TO CROW WING COUNTY LINE

LUMEN RELOCATION PLANS
 PROJECT N.958616 / TERR-1006841

PLANS PREPARED FOR



LUMEN ENGINEER: BLAYNE LEUTHARD
 EMAIL: BLAYNE.LEUTHARD@LUMEN.COM
 PHONE: 320.255.8350
 LUMEN CONSTRUCTION CONTACT: BLAYNE LEUTHARD
 EMAIL: BLAYNE.LEUTHARD@LUMEN.COM
 PHONE: 320.255.8350
 WIRECENTER: PIRZANNYA

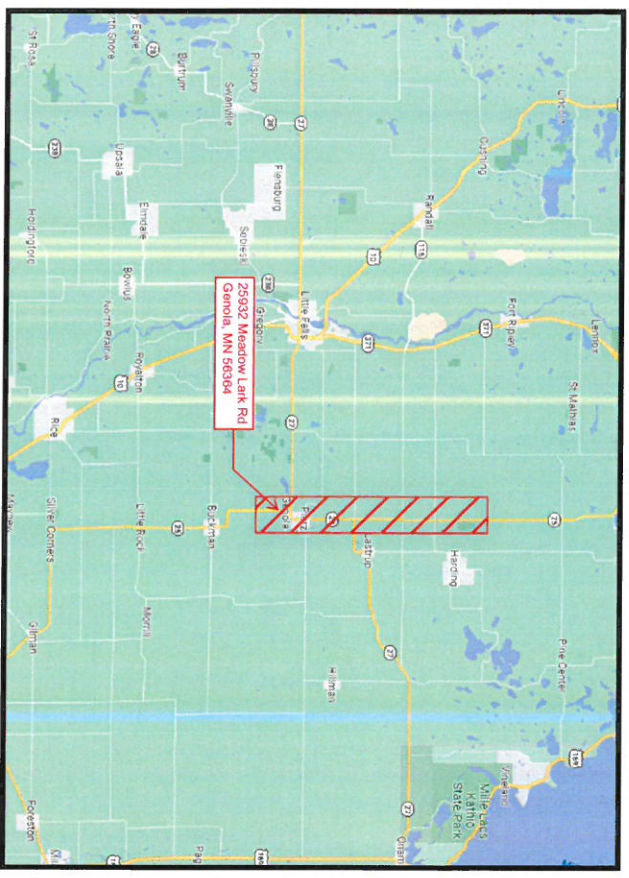
PLANS PREPARED BY



TT ENGINEER: LINDSEY KIRKHAM
 PHONE: 612.867.1145
 EMAIL: LKIRKHAM@TERRATECHLLC.NET

PROJECT CONTACT

OWNER: TODD GRATER - MNDOT
 PHONE: 218.582.8782
 EMAIL: TGRATER@TERRATECHLLC.NET
 PROJECT ENGINEER: MICHAEL ZANIDA - ISTHMUS ENGINEERING
 PHONE: 612.979.6236
 EMAIL: MZANIDA@ISTHMUSENGINEERING.COM
 SURVEY/STAKING: MICHAEL ZANIDA - ISTHMUS ENGINEERING
 EMAIL: MZANIDA@ISTHMUSENGINEERING.COM
 ROAD CONTRACTOR: TBD
 PHONE: TBD
 EMAIL: TBD



FOR REFERENCE ONLY

NOTES:
 ALL EXISTING AND PROPOSED CONDITIONS ARE BASED ON INFORMATION PROVIDED BY OTHER PARTIES. FACILITY LOCATION, DEPTHS AND ELEVATIONS SHOULD BE FIELD VERIFIED PRIOR TO CONSTRUCTION. PROPOSED DESIGN MODIFICATIONS ARE RECOMMENDATIONS ONLY AND SHOULD BE VERIFIED PRIOR TO CONSTRUCTION.

PERMITS REQUIRED: YES NO
 CITY: CITY
 COUNTY: COUNTY
 STATE: MNDOT LONG FORM
 RAILROAD: RR
 PIPELINE: PIPE
 DNR: DNR
 MISCELLANEOUS: EASEMENT

CUTS REQUIRED: YES NO
 FIBER OPTIC
 COPPER

MIGRATIONS REQUIRED: YES NO

PRECONSTRUCTION MEETING DATE: TBD
 EXPECTED ROADWAY CONSTRUCTION START DATE: SUMMER 2022



OWNER STATE ONE CALL
 1-800-252-1100 OR
 WWW.ONECALLMINN.COM

REVISION	DATE

FOR UTILITY DESIGN MEETING AND UTILITY RELOCATION PLANS

5/6/2022

14546 PM

c:\p\l\l\l\l\l\dms04375\049955_tah.dgn

PIT DATA:
 STATE PIT NO. 49027
 COUNTY MORRISON
 NW 1/4, SW 1/4 OF ST 140N R31W
 STATE PIT NO. 49066
 COUNTY MORRISON
 SW 1/4, NE 1/4 OF S12 T41N R29W
 STATE PIT NO. 49069
 COUNTY MORRISON
 NW 1/4, SW 1/4 OF S20 T40N R30W

MINNESOTA DEPARTMENT OF TRANSPORTATION
CONSTRUCTION PLAN FOR GRADING, BITUMINOUS MILLING & SURFACING, RWIS, BRIDGE NOS. 49X12, 49K07, & 49X13
 LOCATED ON T.H. 25 FROM 140' SOUTH OF 123RD ST. TO MORRISON/CROW WING COUNTY LINE



STATE PROJ. NO. 4910-31
 GROSS LENGTH 1183.15 FEET 2.118 MILES
 BRIDGES-LENGTH FEET MILES
 EXCEPTIONS-LENGTH FEET MILES
 NET LENGTH 1183.15 FEET 2.118 MILES
 REF. POINT 126+00.072 TO REF. POINT 128+00.223

STATE PROJ. NO. 4911-15
 GROSS LENGTH 68464.37 FEET 12.967 MILES
 BRIDGES-LENGTH FEET MILES
 EXCEPTIONS-LENGTH 4875.35 FEET 0.923 MILES
 NET LENGTH 63589.02 FEET 12.043 MILES
 REF. POINT 128+00.223 TO REF. POINT 141+00.245

T.H. 25 (IMP25) EQUATIONS:
 STA. 509+81.39 (BK) R1 = STA. 509+84.72 (AH) R2
 STA. 517+21.17 (BK) R3 = STA. 517+23.08 (AH) R4
 STA. 524+01.09 (BK) R5 = STA. 524+03.73 (AH) R6
 STA. 531+01.09 (BK) R7 = STA. 531+03.73 (AH) R8
 STA. 538+01.09 (BK) R9 = STA. 538+03.73 (AH) R10
 STA. 545+01.09 (BK) R11 = STA. 545+03.73 (AH) R12
 STA. 552+01.09 (BK) R13 = STA. 552+03.73 (AH) R14
 STA. 559+01.09 (BK) R15 = STA. 559+03.73 (AH) R16
 STA. 566+01.09 (BK) R17 = STA. 566+03.73 (AH) R18
 STA. 573+01.09 (BK) R19 = STA. 573+03.73 (AH) R20
 STA. 580+01.09 (BK) R21 = STA. 580+03.73 (AH) R22
 STA. 587+01.09 (BK) R23 = STA. 587+03.73 (AH) R24
 STA. 594+01.09 (BK) R25 = STA. 594+03.73 (AH) R26
 STA. 601+01.09 (BK) R27 = STA. 601+03.73 (AH) R28
 STA. 608+01.09 (BK) R29 = STA. 608+03.73 (AH) R30
 STA. 615+01.09 (BK) R31 = STA. 615+03.73 (AH) R32
 STA. 622+01.09 (BK) R33 = STA. 622+03.73 (AH) R34
 STA. 629+01.09 (BK) R35 = STA. 629+03.73 (AH) R36
 STA. 636+01.09 (BK) R37 = STA. 636+03.73 (AH) R38
 STA. 643+01.09 (BK) R39 = STA. 643+03.73 (AH) R40
 STA. 650+01.09 (BK) R41 = STA. 650+03.73 (AH) R42

T.H. 25 (IMP25) EQUATIONS:
 STA. 72+26.97 (BK) R1 = STA. 71+85.43 (AH) R2
 STA. 84+81.26 (BK) R3 = STA. 84+84.38 (AH) R4
 STA. 97+35.50 (BK) R5 = STA. 100+91.64 (AH) R6
 STA. 110+39.74 (BK) R7 = STA. 113+46.00 (AH) R8
 STA. 123+43.98 (BK) R9 = STA. 126+50.24 (AH) R10
 STA. 136+48.22 (BK) R11 = STA. 139+53.48 (AH) R12
 STA. 149+52.46 (BK) R13 = STA. 152+57.72 (AH) R14
 STA. 162+56.70 (BK) R15 = STA. 165+61.96 (AH) R16
 STA. 175+60.94 (BK) R17 = STA. 178+66.20 (AH) R18
 STA. 188+65.18 (BK) R19 = STA. 191+70.44 (AH) R20
 STA. 201+69.42 (BK) R21 = STA. 204+74.68 (AH) R22
 STA. 214+73.66 (BK) R23 = STA. 217+78.92 (AH) R24
 STA. 227+77.90 (BK) R25 = STA. 230+83.16 (AH) R26
 STA. 240+82.14 (BK) R27 = STA. 243+87.40 (AH) R28
 STA. 253+86.38 (BK) R29 = STA. 256+91.64 (AH) R30
 STA. 266+90.62 (BK) R31 = STA. 269+95.88 (AH) R32
 STA. 279+94.86 (BK) R33 = STA. 282+100.12 (AH) R34
 STA. 292+99.10 (BK) R35 = STA. 295+104.36 (AH) R36
 STA. 305+103.34 (BK) R37 = STA. 308+108.60 (AH) R38
 STA. 318+107.58 (BK) R39 = STA. 321+112.84 (AH) R40
 STA. 331+111.82 (BK) R41 = STA. 334+117.08 (AH) R42

REF. POINT/STATION COMPARISONS

T.H. 25 (IMP25)	STATION	REF. PT.
126	504+00.00 R1	45+18.20 R1
127	554+41.45 R2	90+56.34 R3
128	607+52.47 R6	135
		131
		132
		133
		134
		135
		136
		137
		138
		139
		140
		141
		142

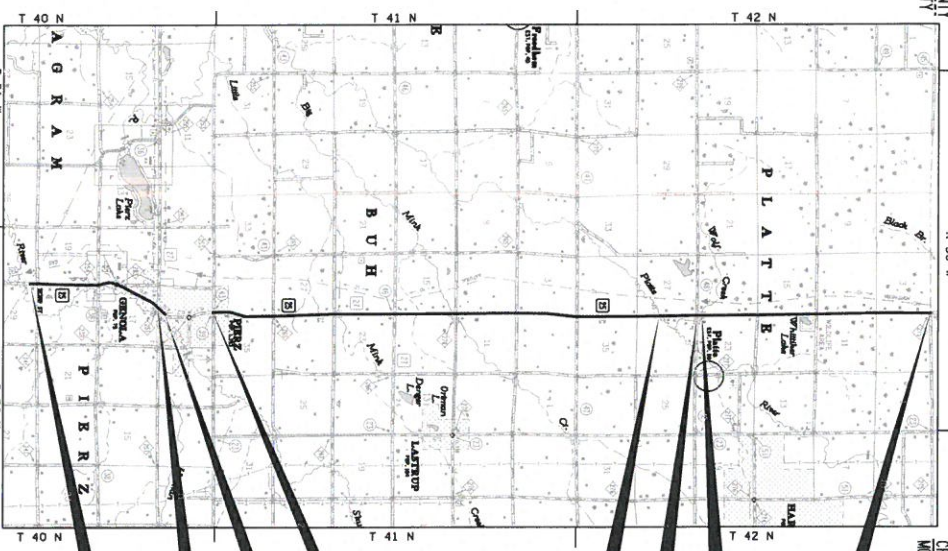
DATE	PLAN REVISIONS	APPROVER

DESIGN DESIGNATION

Design Speed 60 MPH
 Design Year 2022
 Design Year 2042
 Design Hr. Val. 2230
 Design Speed not achieved at STA. TO STA.
 Design Speed not achieved at STA. TO STA.



PROJECT LOCATION
 COUNTY: MORRISON
 DISTRICT: 3



WARNING!
 HIGH PRESSURE GAS
 PIPELINE CROSSING!

END S.P. 4911-15
 T.H. 25 STA. 684+61.00 R12
 R.P. 141+00.245

REMOVE EXISTING BRIDGE NO. 88062
 CONSTRUCT BRIDGE NO. 49X13

REMOVE EXISTING BRIDGE NO. 88081
 CONSTRUCT BRIDGE NO. 49K07

REMOVE EXISTING BRIDGE NO. 6321
 CONSTRUCT BRIDGE NO. 49X12

STATE PROJ. NO. 4910-31 (T.H. 25 = 209)
STATE PROJ. NO. 4911-15 (T.H. 25 = 209)

CHARGE IDENTIFIER
 4910-31

DESIGN IDENTIFIER
 4911-15

FOR PLANS AND UTILITIES SYMBOLS SEE TECHNICAL MANUAL.

RECOMMENDED FOR APPROVAL	DISTRICT TRANSPORTATION ENGINEER	20
RECOMMENDED FOR APPROVAL	DISTRICT MATERIALS ENGINEER	20
RECOMMENDED FOR APPROVAL	DISTRICT WATER RESOURCES/INFRASTRUCTURE ENGINEER	20
RECOMMENDED FOR APPROVAL	DISTRICT TRAFFIC ENGINEER	20
RECOMMENDED FOR APPROVAL	STATE THE-LETTING ENGINEER	20
RECOMMENDED FOR APPROVAL	DIRECTOR, LAND MANAGEMENT	20
APPROVED	STATE DESIGN ENGINEER	20

I HEREBY CERTIFY THAT THIS PLAN WAS PREPARED BY ME OR UNDER MY DIRECT SUPERVISION AND THAT I AM A DULY LICENSED PROFESSIONAL ENGINEER UNDER THE LAWS OF THE STATE OF MINNESOTA.

DATE: _____ **SIGNATURE:** _____ **LICENSE #:** _____

DESIGN SQUAD D. POWERS, K. ANASTROSKEL, R. ANASTROSK, R. DEE, K. REKENTZ



INDEX

SHEET NO.	DESCRIPTION
1	GENERAL LAYOUT
2-3	STATEMENT OF ESTIMATED QUANTITIES
4-6	SOILS & CONSTRUCTION NOTES & STANDARD PLATES
7	QUANTITY TABULATIONS
8-19	TYPICAL SECTIONS
20-21	MISCELLANEOUS DETAILS
22-31	STANDARD PLANS
32-56	ALIGNMENT TABULATION
57-58	DRAPAGE UTILITIES & CONSTRUCTION PLANS
74-75	CONSTRUCTION PLAN DETAILS
76-77	PROFILES
78-105	DRAINAGE PLANS & UTILITY CONFLICTS
106-110	STORMWATER POLLUTION PREVENTION PLAN
111-130	EROSION CONTROL PLAN
	BOX CULVERT PLANS (BR. NO. 49X12)
	BOX CULVERT PLANS (BR. NO. 49K07)
	BOX CULVERT PLANS (BR. NO. 49X13)
	RWIS PLANS
	TRAFFIC CONTROL PLAN
	STANDING & PAVEMENT WARNING PLANS
	CROSS SECTIONS

THIS PLAN CONTAINS 194 SHEETS

FED. PROJ. NO. _____ **TO BE PROVIDED AT A LATER DATE**

GOVERNING SPECIFICATIONS
 THE 2000 EDITION OF THE MINNESOTA DEPARTMENT OF TRANSPORTATION STANDARD SPECIFICATIONS FOR CONSTRUCTION SHALL GOVERN.

DATE: _____ **SIGNATURE:** _____ **LICENSE #:** _____

FOR UTILITY DESIGN MEETING AND UTILITY RELOCATION PLANS

NO LUMEN CONFLICTS
ANTICIPATED

NOTE:
SEE SHEET 59 FOR UTILITY CONFLICT LEGEND.

LEGEND	
[Symbol]	LEGEND APPLIES TO SHEETS 78 TO 105
[Symbol]	EXISTING RIGHT OF WAY
[Symbol]	TEMPORARY EASEMENT
[Symbol]	NEW RIGHT OF WAY
[Symbol]	AREAS OF ENVIRONMENTAL SENSITIVITY
[Symbol]	CONSTRUCTION LIMITS
[Symbol]	LIMITS OF DISTURBANCE
[Symbol]	EXISTING COLVERT
[Symbol]	EXISTING STORM SEWER
[Symbol]	EXISTING APRON / CATCH BASIN
[Symbol]	PROPOSED COLVERT
[Symbol]	PROPOSED STORM SEWER
[Symbol]	PROPOSED APRON / CATCH BASIN
[Symbol]	SURFACE FLOW ARROW

NO.	DATE	BY	DESCRIPTION

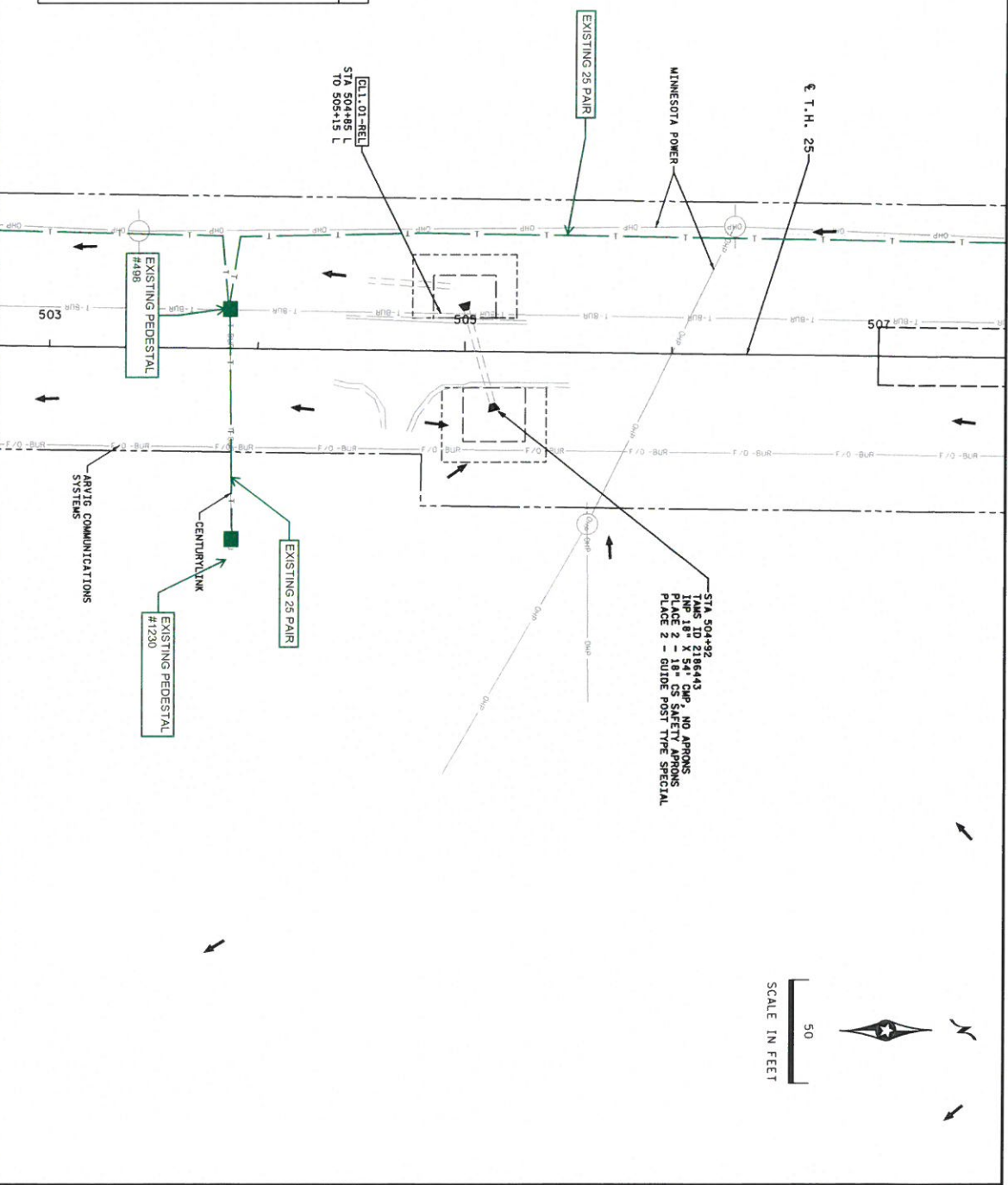
DATE: 5/6/2022
 LICENSE: 58931
 PROJECT: RAIN ARMSTRONG

ISTHMUS ENGINEERING
 N. MISKOWSKI
 N. MISKOWSKI
 K. THORSON

MINNESOTA STATE PROJECT NO. 491-15 (T.H. 25)

MINNESOTA DEPARTMENT OF TRANSPORTATION
 DRAINAGE PLANS & UTILITY CONFLICTS
 T.H. 25
 TAMS ID 2186443

SHEET 78 OF 130



STA 504+92
 TAMS ID 2186443
 PLACE 1 - 18" CS SAFETY APRONS
 PLACE 2 - GUIDE POST TYPE SPECIAL

FOR UTILITY DESIGN MEETING AND UTILITY RELOCATION PLANS

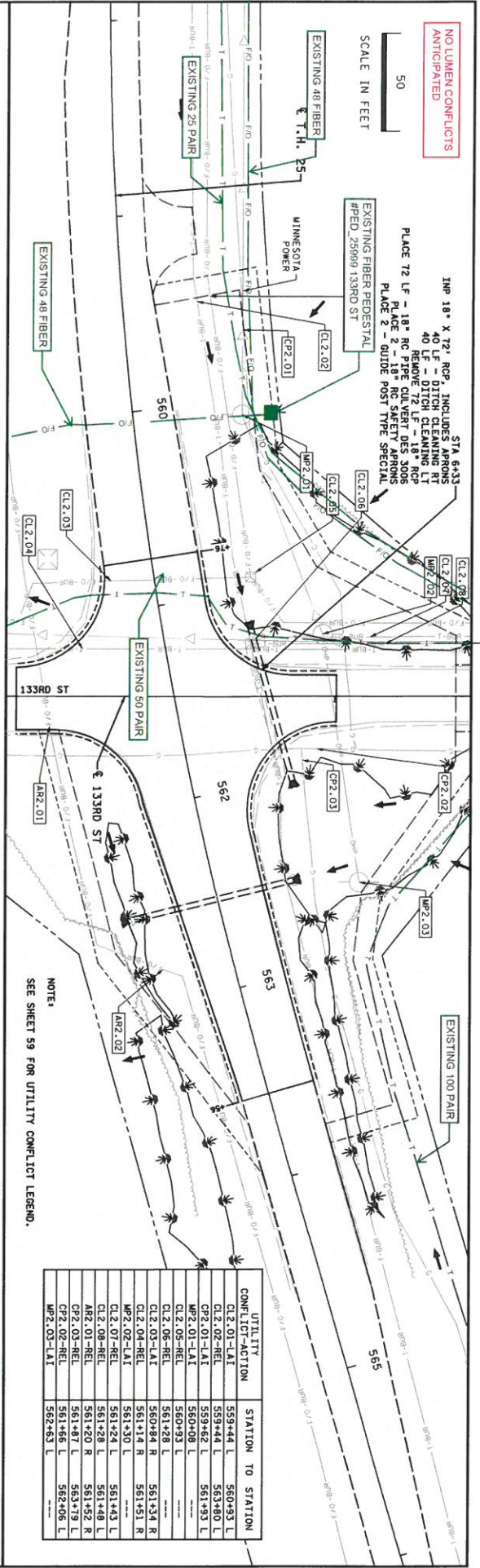
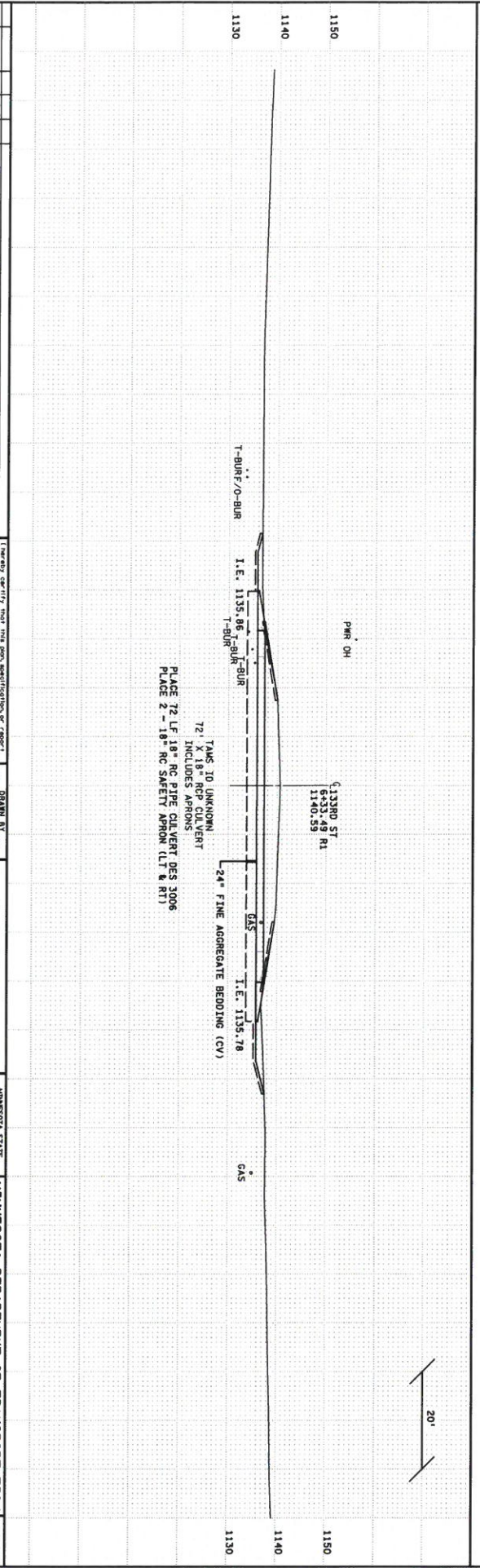
NO. DATE BY (CO) (PR) REVISION
 1150 11/14/22
 1140 11/14/22
 1130 11/14/22

DATE: 5/6/2022
 PROJECT: 133RD ST. CULVERT
 DRAWN BY: N. MISKOWSKI
 CHECKED BY: K. THOMPSON
 LICENSE: 58891

ISTHMUS ENGINEERING
 MINNESOTA STATE PROJECT NO. 4911-15 (T.H. 25)
 MINNESOTA DEPARTMENT OF TRANSPORTATION
 DRAINAGE PLANS & UTILITY CONFLICTS
 T.H. 25
 133RD ST. CULVERT

ISTHMUS ENGINEERING

MINNESOTA STATE PROJECT NO. 4911-15 (T.H. 25)
 MINNESOTA DEPARTMENT OF TRANSPORTATION
 DRAINAGE PLANS & UTILITY CONFLICTS
 T.H. 25
 133RD ST. CULVERT
 SHEET 79 OF 130

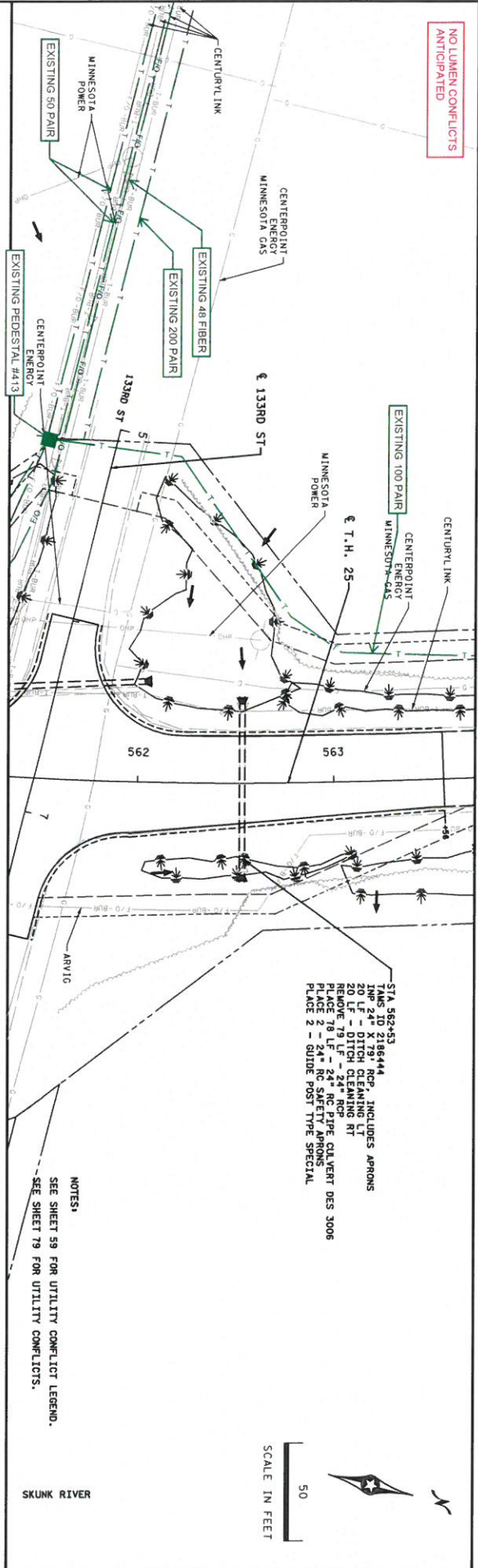


NOTE:
 SEE SHEET 59 FOR UTILITY CONFLICT LEGEND.

UTILITY CONFLICT-ACTION	STATION TO	STATION
CL2.01-LAI	559+44 L	560+93 L
CL2.02-REL	559+44 L	563+80 L
MP2.01-LAI	559+62 L	561+93 L
MP2.01-LAI	560+08 L	560+93 L
CL2.05-REL	560+93 L	561+28 L
CL2.06-REL	561+28 L	561+48 R
CL2.03-LAI	560+84 R	561+34 R
CL2.04-REL	561+14 R	561+51 R
MP2.02-LAI	561+30 L	561+43 L
CL2.07-REL	561+28 L	561+48 R
AR2.01-REL	561+20 R	561+52 R
MP2.03-REL	561+87 L	563+19 L
MP2.02-REL	561+86 L	562+06 L
MP2.03-LAI	562+83 L	562+83 L

FOR UTILITY DESIGN MEETING AND UTILITY RELOCATION PLANS

NO LUMEN CONFLICTS
ANTICIPATED



STA 562+53
 TANK 210 2186444
 20 LF - 24" RCP, INCLUDES APRONS
 20 LF - DITCH CLEANING LT
 20 LF - DITCH CLEANING RT
 REMOVE 79 LF - 24" RCP
 REMOVE 79 LF - 24" RCP
 PLACE 2 - 24" RC SAFETY APRONS
 PLACE 2 - GUIDE POST TYPE SPECIAL

NOTES:
 SEE SHEET 59 FOR UTILITY CONFLICT LEGEND.
 SEE SHEET 79 FOR UTILITY CONFLICTS.



TANK 2186444
 79' X 24" RCP CULVERT
 INCLUDES APRONS
 PLACE 79 LF - 24" RC PIPE CULVERT DES 3006
 PLACE 2 - 24" RC SAFETY APRON (LT & RT)

NO.	DATE	BY	T.O.	APP'D.	REVISION
1. THE DESIGNER SHALL BE RESPONSIBLE FOR THE ACCURACY OF ALL INFORMATION AND DATA PROVIDED TO THE ENGINEER. THE ENGINEER SHALL BE RESPONSIBLE FOR THE ACCURACY OF ALL INFORMATION AND DATA PROVIDED TO THE CONTRACTOR. THE CONTRACTOR SHALL BE RESPONSIBLE FOR THE ACCURACY OF ALL INFORMATION AND DATA PROVIDED TO THE FIELD.					
DATE: 5/6/2022 LICENSE: 58891					
DANIEL J. N. MISZKOWSKI N. MISZKOWSKI N. MISZKOWSKI K. THOMPSON			MINNESOTA STATE PROJECT NO. 4911-15 (T.H. 25)		
MINNESOTA DEPARTMENT OF TRANSPORTATION DRAINAGE PLANS & UTILITY CONFLICTS T.H. 25 TANK ID 2186444			SHEET 80 OF 130		

FOR UTILITY DESIGN MEETING AND UTILITY RELOCATION PLANS

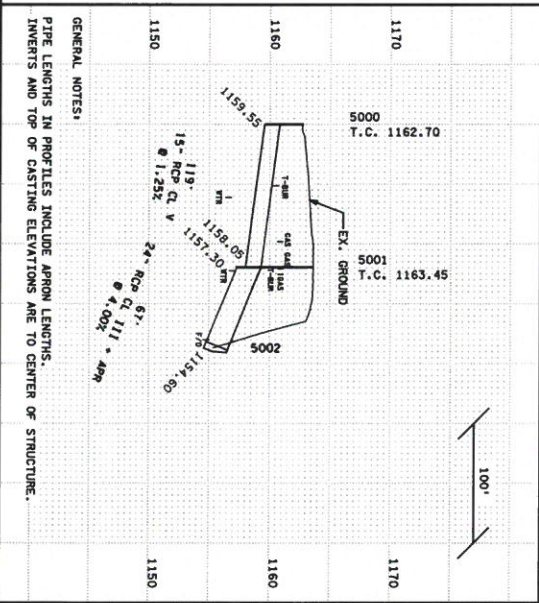
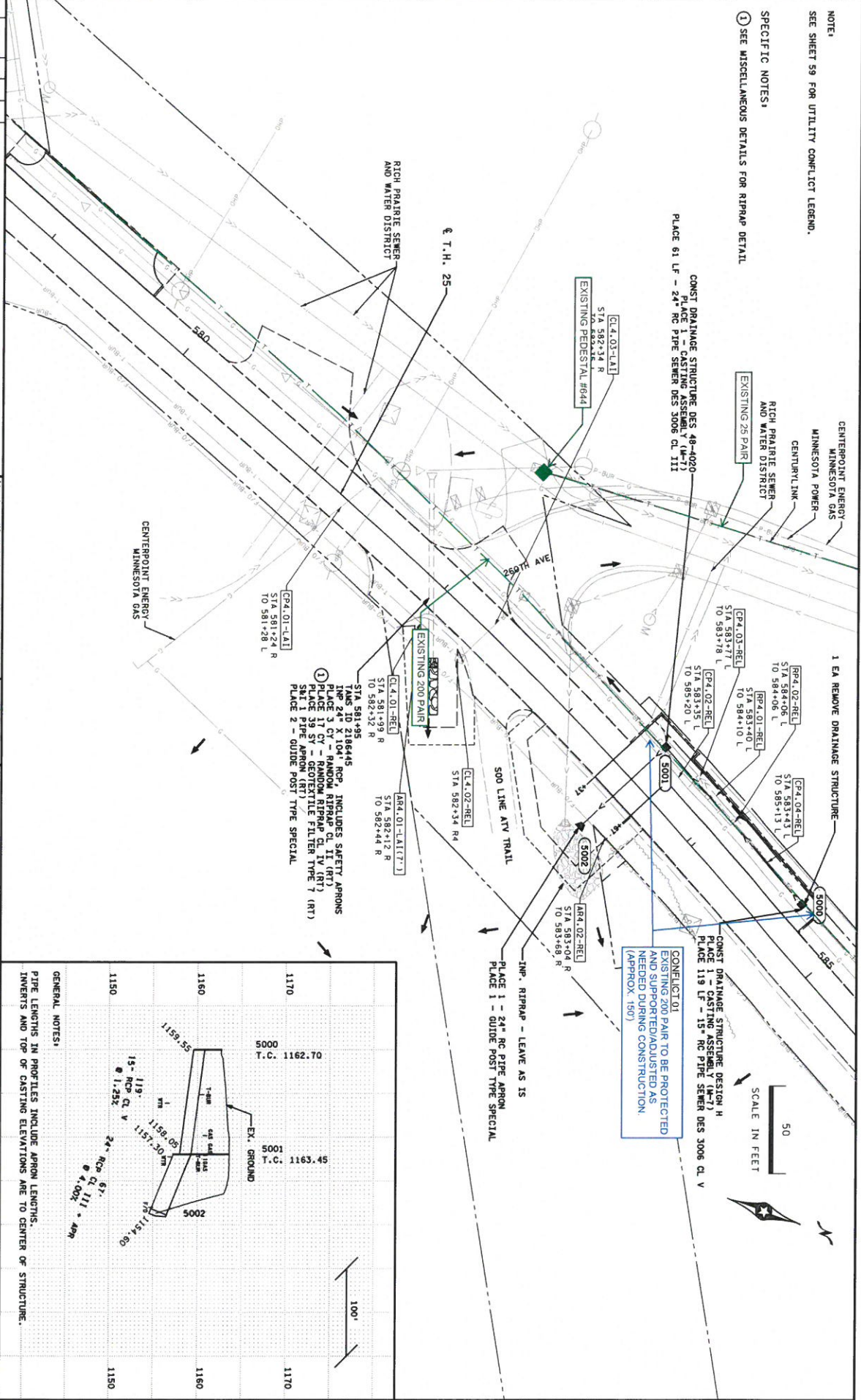
NO.	DATE	BY	CHKD	APPRD

NO.	DATE	BY	CHKD	APPRD

DATE: 5/6/2022 LICENSE: 58991

DESIGNED BY: R. ARMSTRONG
 CHECKED BY: R. ARMSTRONG
 K. THOMPSON

MINNESOTA STATE PROJECT NO. 4911-15 (T.H. 25)
 MINNESOTA DEPARTMENT OF TRANSPORTATION
 DRAINAGE PLANS & UTILITY CONFLICTS
 T.H. 25
 TAMS ID 2186445 & STORM SEWER PROFILES
 SHEET 81 OF 130



NOTE:
 SEE SHEET 59 FOR UTILITY CONFLICT LEGEND.
 SPECIFIC NOTES:
 ① SEE MISCELLANEOUS DETAILS FOR RIRRAP DETAIL.

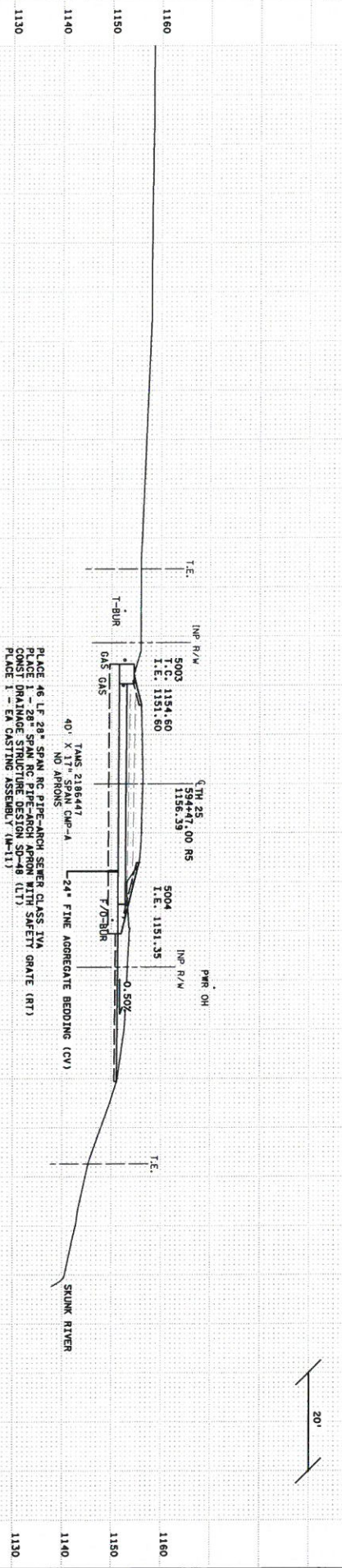
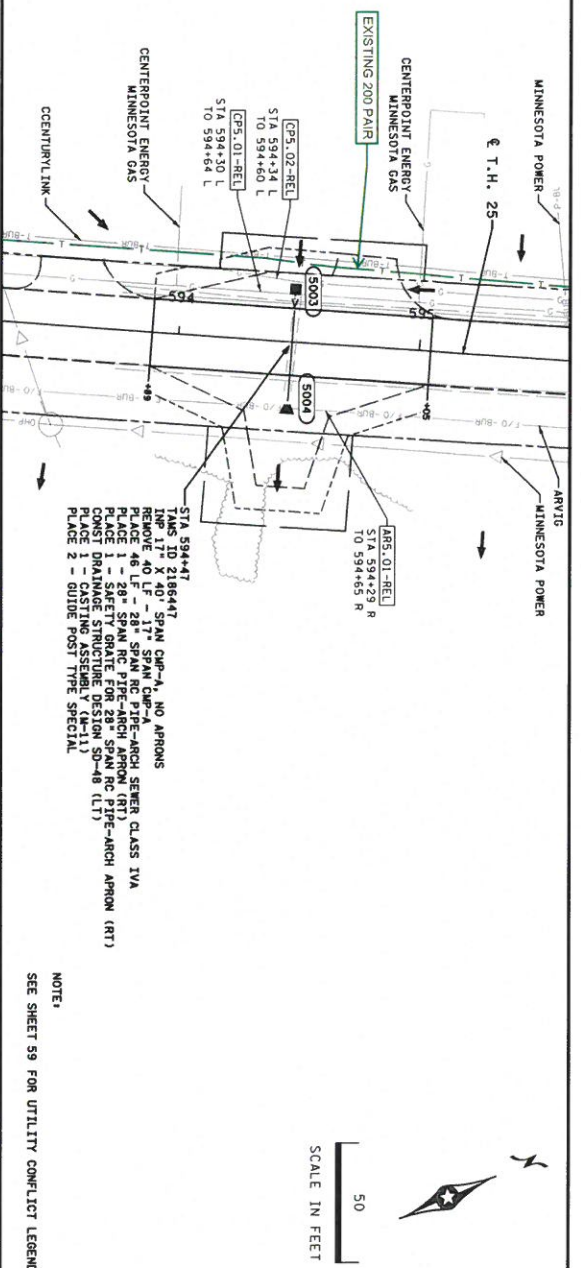
CONST. DRAINAGE STRUCTURE DESIGN H
 PLACE 1 - CASTING ASSEMBLY (M-7)
 PLACE 119 LF - 15" RC PIPE SEWER DES 3006 CL. V

CONST. DRAINAGE STRUCTURE DESIGN H
 PLACE 1 - CASTING ASSEMBLY (M-7)
 PLACE 119 LF - 15" RC PIPE SEWER DES 3006 CL. V
 EXISTING 200 PAIR TO BE PROTECTED
 AND SUPPORTED/ADJUSTED AS
 NEEDED DURING CONSTRUCTION
 (APPROX. 150')



FOR UTILITY DESIGN MEETING AND UTILITY RELOCATION PLANS

NO LUMEN CONFLICTS
ANTICIPATED



NO.	DATE	BY	EXG	APPR	REVISION

DATE	REVISION
5/6/2022	

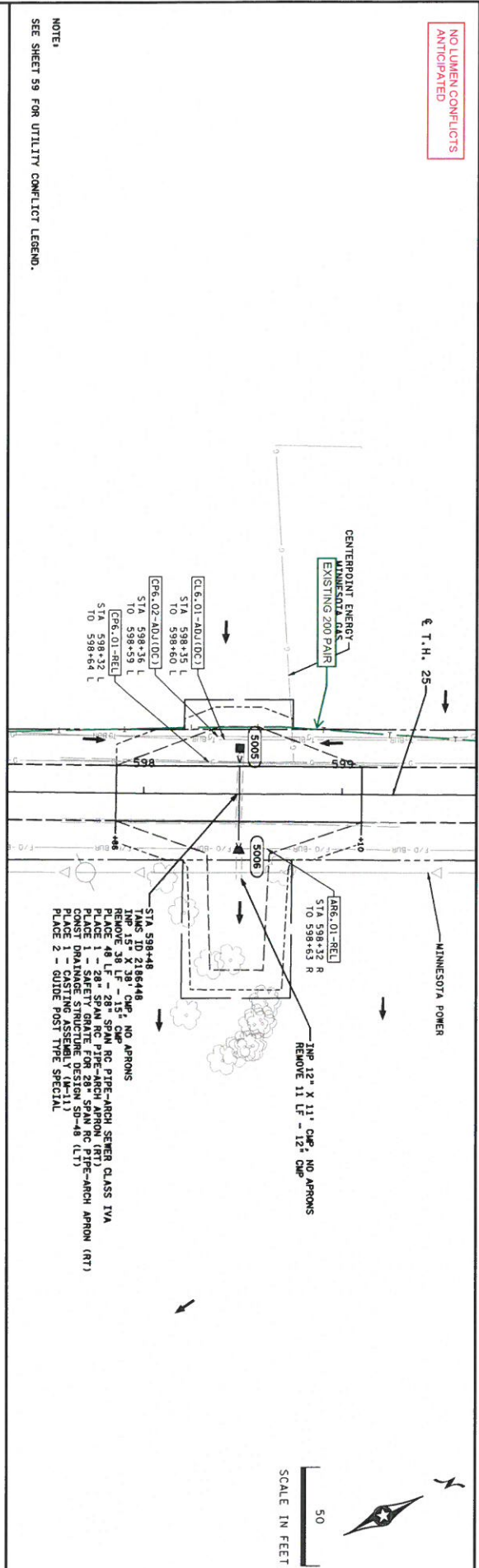
I hereby certify that the work represented on this drawing was done by me or under my direct supervision and that I am a duly Licensed Professional Engineer under the laws of the State of Minnesota.	N. DEVLIN, P.E. N. WESTGATE K. THOMPSON CHIEF ENGINEER
Ryan Armstrong Project Name	License # 56931

MINNESOTA STATE PROJECT NO. 4911-15 (T.H. 25)	MINNESOTA DEPARTMENT OF TRANSPORTATION DRAINAGE PLANS & UTILITY CONFLICTS T.H. 25 TAMS ID 2186447	SHEET 82 OF 130
--	--	--------------------------

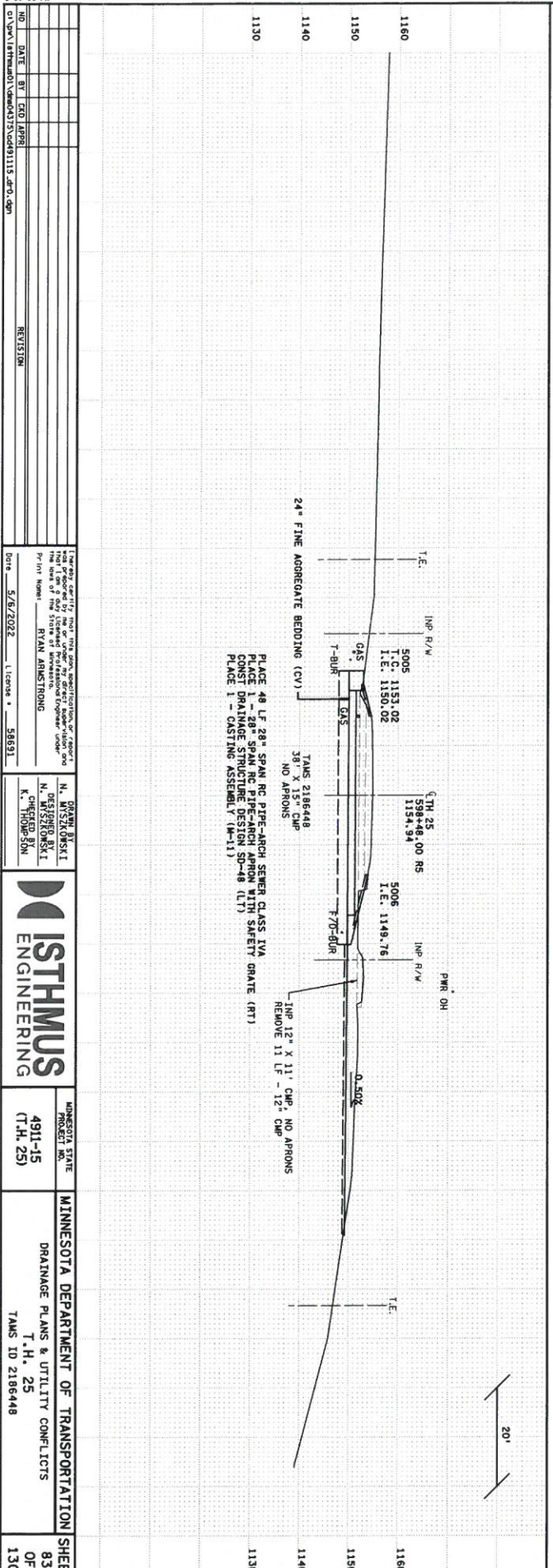
11/15/2022
150/27
04/23
01/29/18
18784441
1502413
5/20/22
1115

FOR UTILITY DESIGN MEETING AND UTILITY RELOCATION PLANS

NO LUMEN CONFLICTS
ANTICIPATED



NOTE:
SEE SHEET 59 FOR UTILITY CONFLICT LEGEND.

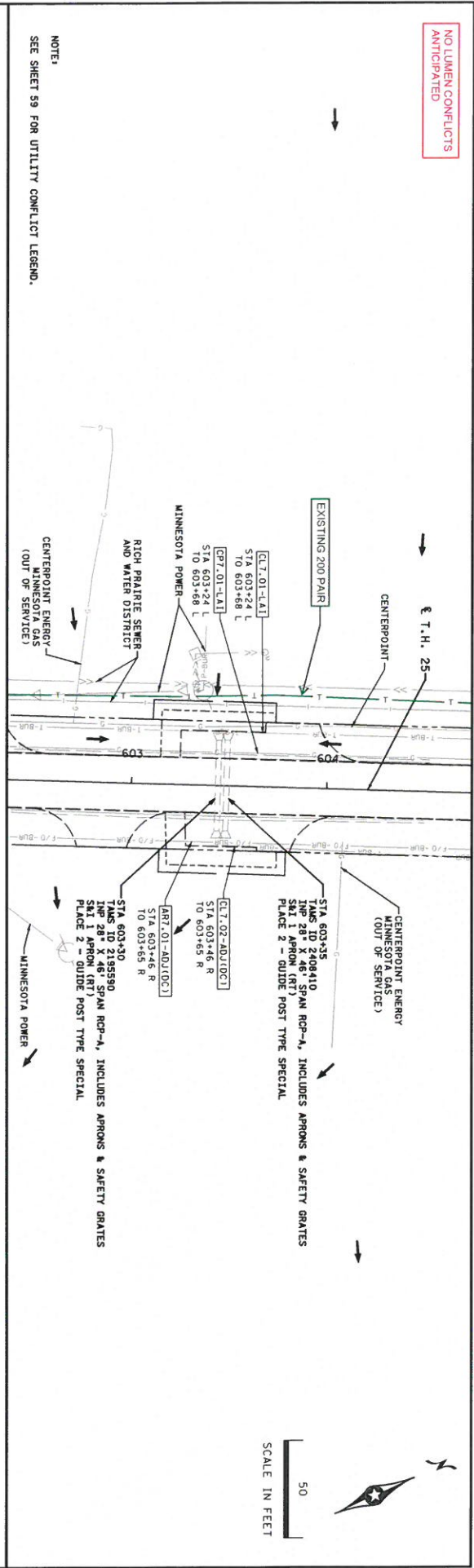


NO.	DATE	BY	CHKD	APPROV	REVISION

1. THE DESIGNER'S LIABILITY FOR THIS DESIGN, RELOCATION, OR REPAIR OF ANY UTILITY OR STRUCTURE IS LIMITED TO THE DESIGN AND RELOCATION OF THE UTILITY OR STRUCTURE ONLY. THE DESIGNER SHALL NOT BE RESPONSIBLE FOR THE DESIGN OR RELOCATION OF ANY OTHER UTILITY OR STRUCTURE.	2. THE DESIGNER'S LIABILITY FOR THIS DESIGN, RELOCATION, OR REPAIR OF ANY UTILITY OR STRUCTURE IS LIMITED TO THE DESIGN AND RELOCATION OF THE UTILITY OR STRUCTURE ONLY. THE DESIGNER SHALL NOT BE RESPONSIBLE FOR THE DESIGN OR RELOCATION OF ANY OTHER UTILITY OR STRUCTURE.
DATE: 5/6/2022 LICENSE: 56893	DESIGNER: N. HISSAUMSKI CHECKED BY: K. THOMSON PROJECT NO.: 4911-15 (T.H. 25) MINNESOTA DEPARTMENT OF TRANSPORTATION DRAINAGE PLANS & UTILITY CONFLICTS T.H. 25 TAMS ID 2186448

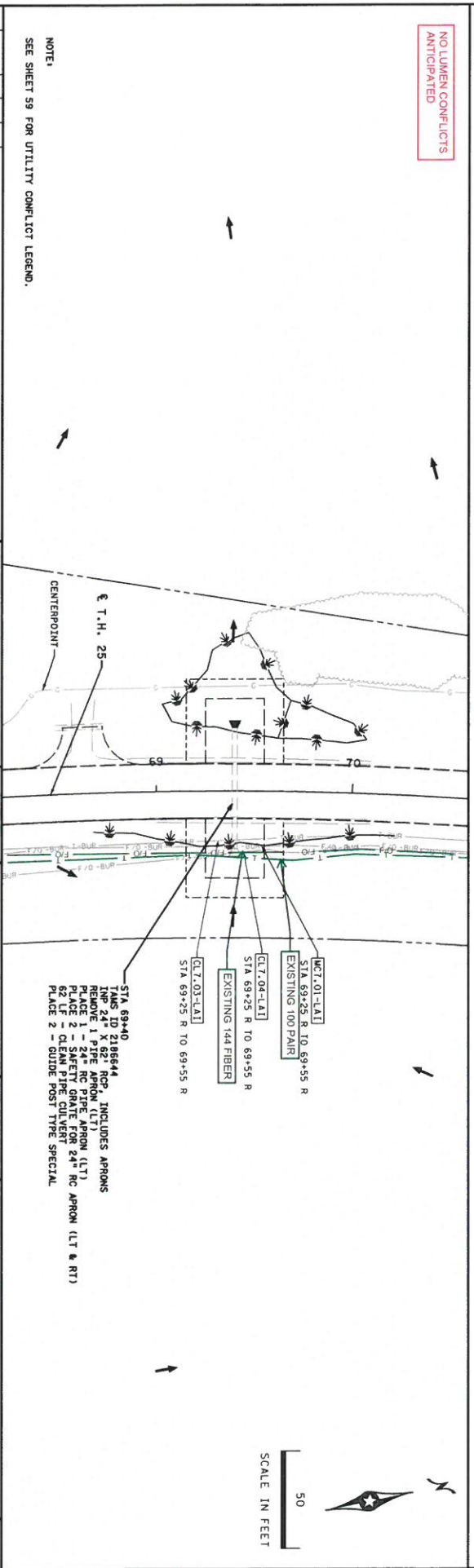
FOR UTILITY DESIGN MEETING AND UTILITY RELOCATION PLANS

NO LUMEN CONFLICTS
ANTICIPATED



NOTE:
SEE SHEET 59 FOR UTILITY CONFLICT LEGEND.

NO LUMEN CONFLICTS
ANTICIPATED

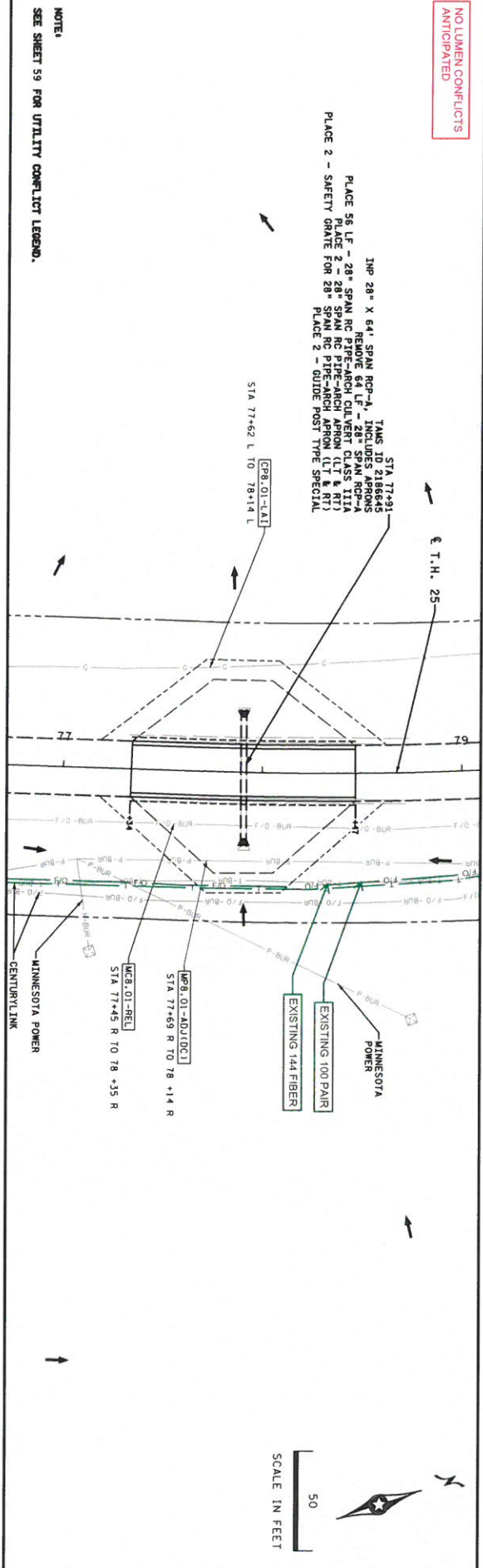


NOTE:
SEE SHEET 59 FOR UTILITY CONFLICT LEGEND.

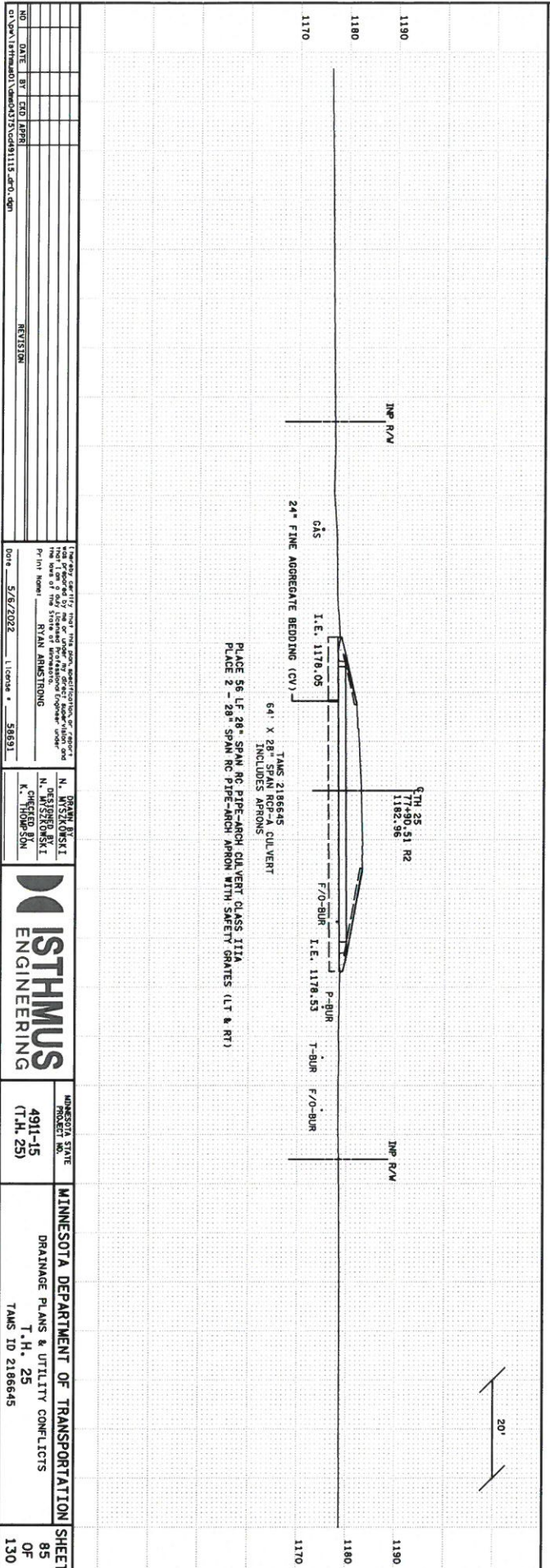
DATE	BY	CHECKED BY	DATE	REVISION	
5/26/2022					
<p style="font-size: small;">I hereby certify that the above information is a true and correct copy of the original as prepared by me or under my direct supervision and that I am a duly Licensed Professional Engineer under the laws of the State of Minnesota.</p> <p style="font-size: small;">Professional Engineer License No. 58591</p> <p style="font-size: small;">Name: RYAN ARMSTRONG</p>					
<p style="font-size: small;">N. DORAN, B.S. N. RYSZKOWSKI N. RYSZKOWSKI K. THOMPSON</p>			<p style="font-size: small;">MINNESOTA STATE PROJECT NO. 4911-15 (T.H. 25)</p>		
<p style="font-size: small;">MINNESOTA DEPARTMENT OF TRANSPORTATION SHEET DRAINAGE PLANS & UTILITY CONFLICTS T.H. 25</p>			<p style="font-size: small;">TAMS ID 2195590, 2409410, 2186644</p>		
<p style="font-size: small;">84 OF 130</p>					

FOR UTILITY DESIGN MEETING AND UTILITY RELOCATION PLANS

NO LUMEN CONFLICTS
ANTICIPATED



NOTE:
SEE SHEET 59 FOR UTILITY CONFLICT LEGEND.



NO.	DATE	BY	CHKD	RPR	REVISION

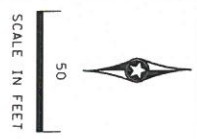
License No. 5672922 License Type: L License Status: Active License Expiration: 5/6/2022	License No. 56931 License Type: L License Status: Active License Expiration: 5/6/2022
--	--

Project Name: RAIN ARMSTRONG Project No.: 4911-15 (T.H. 25) Project Location: T.H. 25 Project Description: DRAINAGE PLANS & UTILITY CONFLICTS Project Manager: T.H. 25 Project ID: 2186645	Designer: N. MISKOWSKI Checker: K. THOMPSON Engineer: N. MISKOWSKI License No.: 56931 License Type: L License Status: Active License Expiration: 5/6/2022
---	---

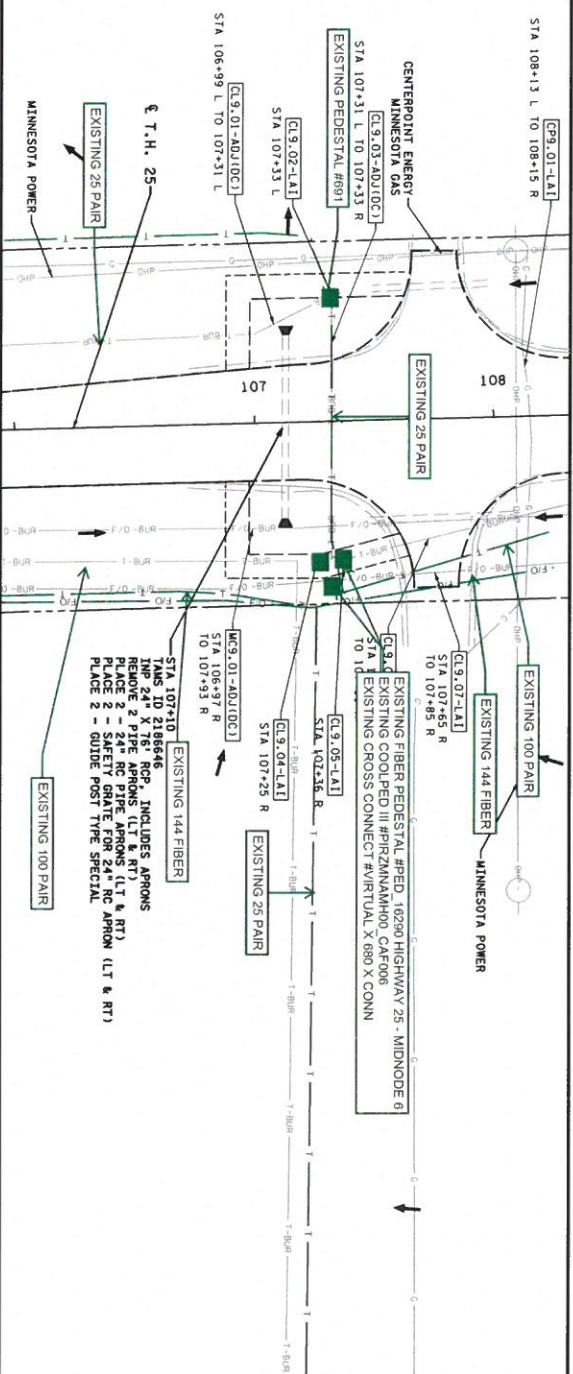
MINNESOTA STATE PROJECT NO. 4911-15 (T.H. 25)	MINNESOTA DEPARTMENT OF TRANSPORTATION	SHEET 85 OF 130
---	--	-----------------

FOR UTILITY DESIGN MEETING AND UTILITY RELOCATION PLANS

NO LUMEN CONFLICTS
ANTICIPATED

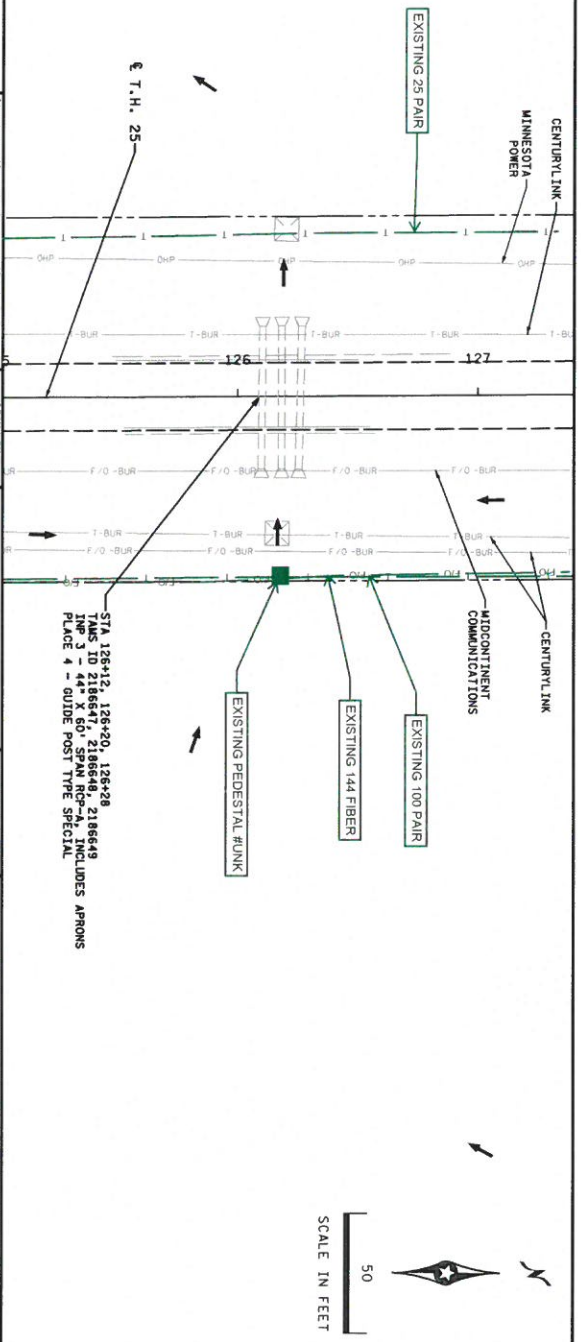


NOTE:
SEE SHEET S9 FOR UTILITY CONFLICT LEGEND.



NO LUMEN CONFLICTS
ANTICIPATED

NOTE:
SEE SHEET S9 FOR UTILITY CONFLICT LEGEND.

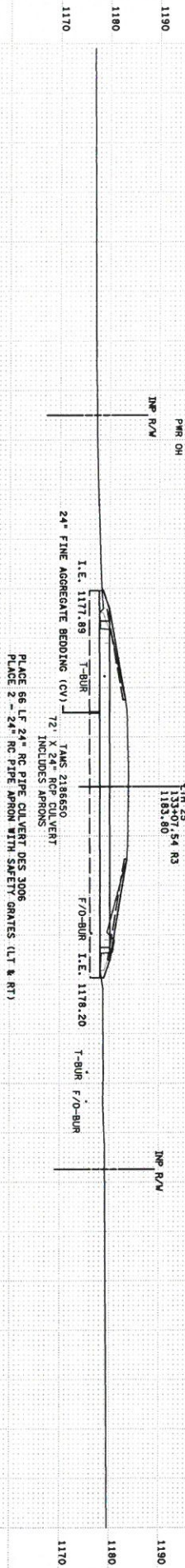
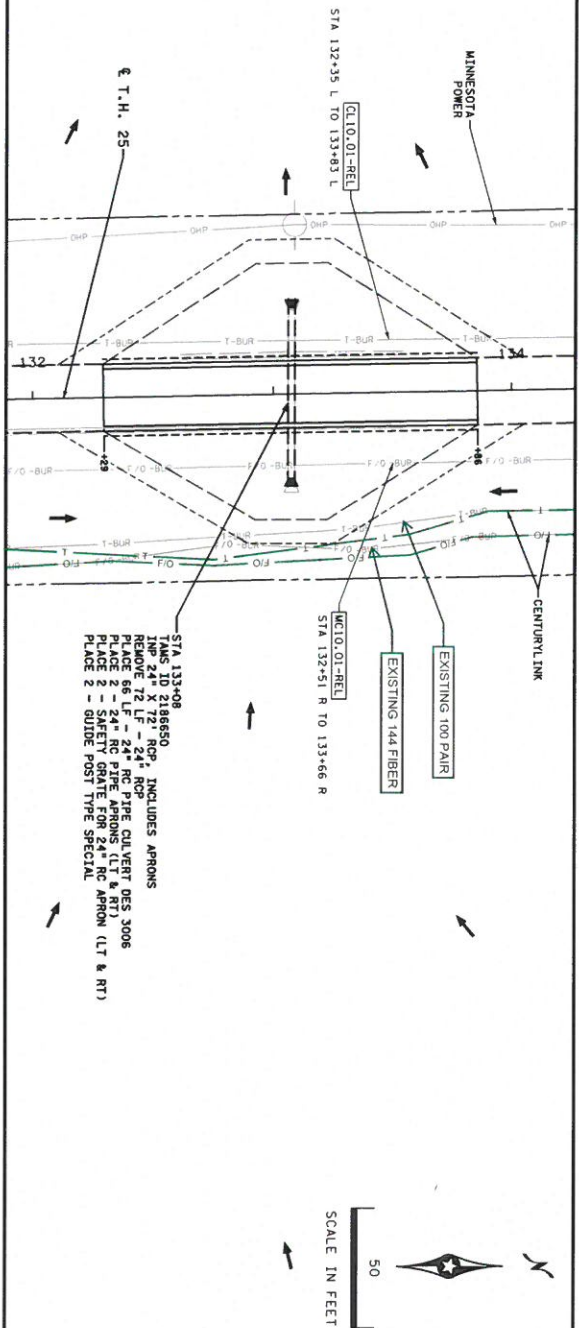


NO	DATE	BY	EXG	APPR	REVISION
<p style="font-size: small;">I hereby certify that this plan, specification, or report is the work of me or under my direct supervision and that I am a duly Licensed Professional Engineer under the laws of the State of Minnesota. My license number is 58691.</p> <p style="font-size: small;">Date: 5/6/2022 License # 58691</p>					
<p>DAVID R. BERT N. STATE ST. #111 CHEROKEE, MN K. THOMPSON</p>					
<p>ISTHMUS ENGINEERING</p>					
MINNESOTA STATE PROJECT NO.			MINNESOTA DEPARTMENT OF TRANSPORTATION SHEET		
4911-15 (T.H. 25)			DRAINAGE PLANS & UTILITY CONFLICTS		
T.M.S. ID 2186646, 2186647, 2186648, 2186649			T.H. 25		
T.M.S. ID 2186646, 2186647, 2186648, 2186649			130		

FOR UTILITY DESIGN MEETING AND UTILITY RELOCATION PLANS

NO LUMEN CONFLICTS
ANTICIPATED

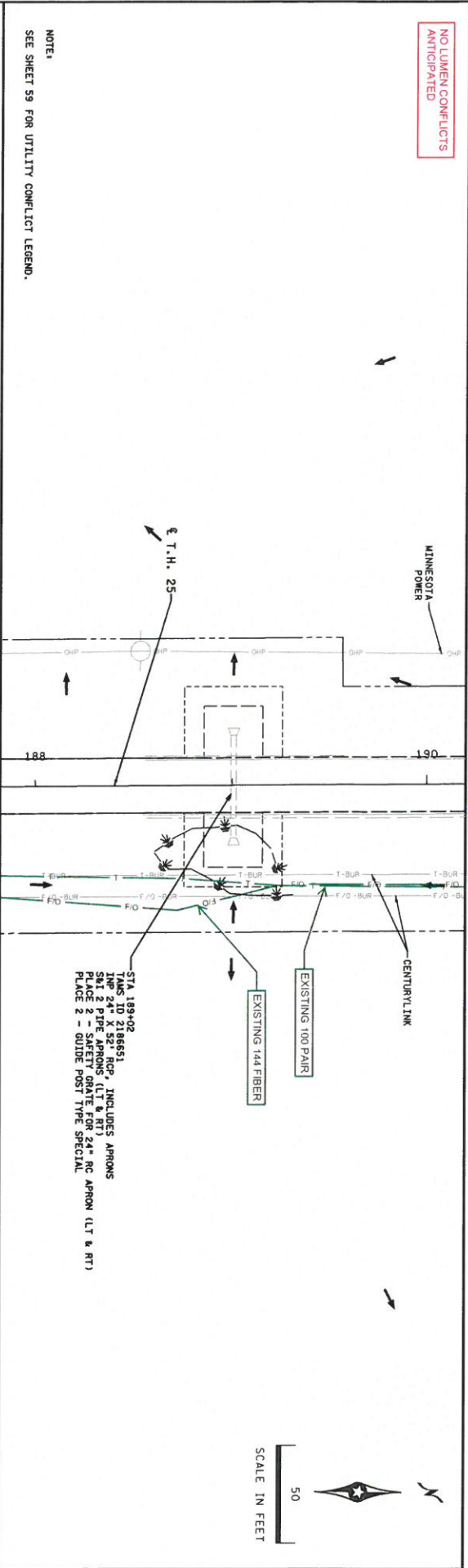
NOTE:
SEE SHEET 59 FOR UTILITY CONFLICT LEGEND.



NO.	DATE	BY	JOB	APPR	REVISION
<p style="font-size: small;">I hereby certify that the above description of work is a true and correct copy of the original as shown to me and that I am a duly Licensed Professional Engineer under the laws of the State of Minnesota.</p> <p style="text-align: right;">Date: 5/6/2022 License # 58891</p>					
<p style="font-size: small;">DRAWN BY: N. HANSEN CHECKED BY: N. HANSEN K. THOMPSON</p>			<p style="font-size: small;">DESIGNED BY: RIAN ARMSTRONG</p>		
			<p style="font-size: small;">MINNESOTA STATE PROJECT NO. 4911-15 (T.H. 25)</p>		
<p style="font-size: small;">MINNESOTA DEPARTMENT OF TRANSPORTATION SHEET 87 OF 130</p>			<p style="font-size: small;">DRAINAGE PLANS & UTILITY CONFLICTS T.H. 25 TAMS ID 2186650</p>		

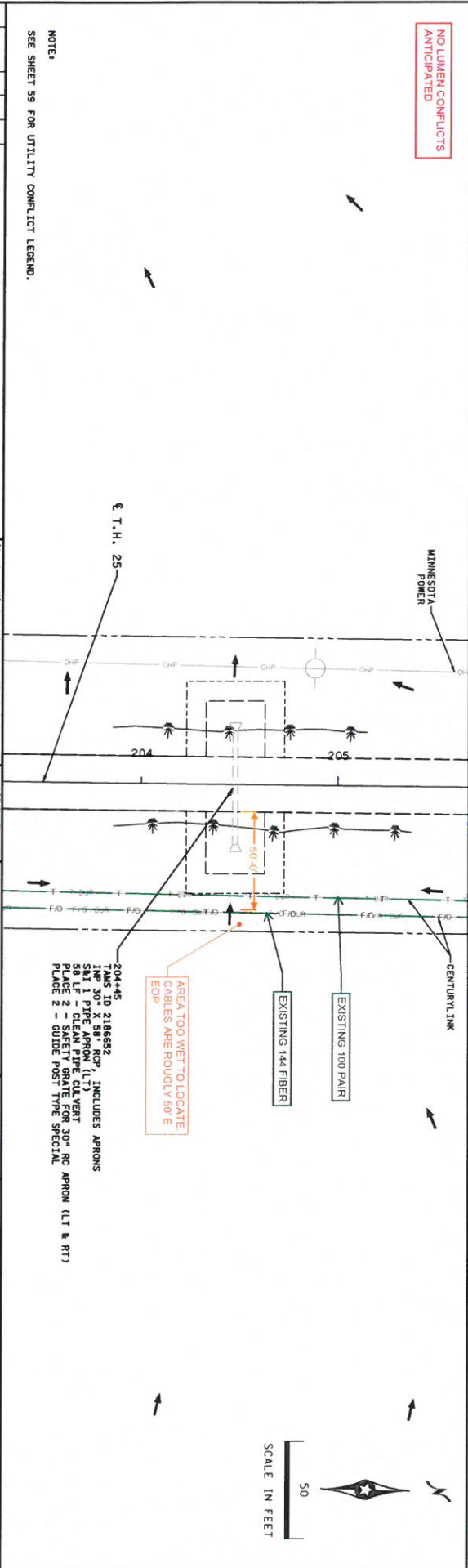
FOR UTILITY DESIGN MEETING AND UTILITY RELOCATION PLANS

NO LUMEN CONFLICTS
ANTICIPATED



NOTE:
SEE SHEET S9 FOR UTILITY CONFLICT LEGEND.

NO LUMEN CONFLICTS
ANTICIPATED



NOTE:
SEE SHEET S9 FOR UTILITY CONFLICT LEGEND.

NO	DATE	BY	CHKD	APPD	REVISION

I hereby certify that the plan, specification, or report herein is a true and correct representation of the work done by me or under my direct supervision and that I am a duly Licensed Professional Engineer under the laws of the State of Minnesota. License No. 58691

Date: 5/6/2022 License # 58691

Print Name: RYAN ARMSTRONG

N. DAWN BERT
N. DUSTIN BERT
N. KEVIN BERT
K. THOMAS BERT

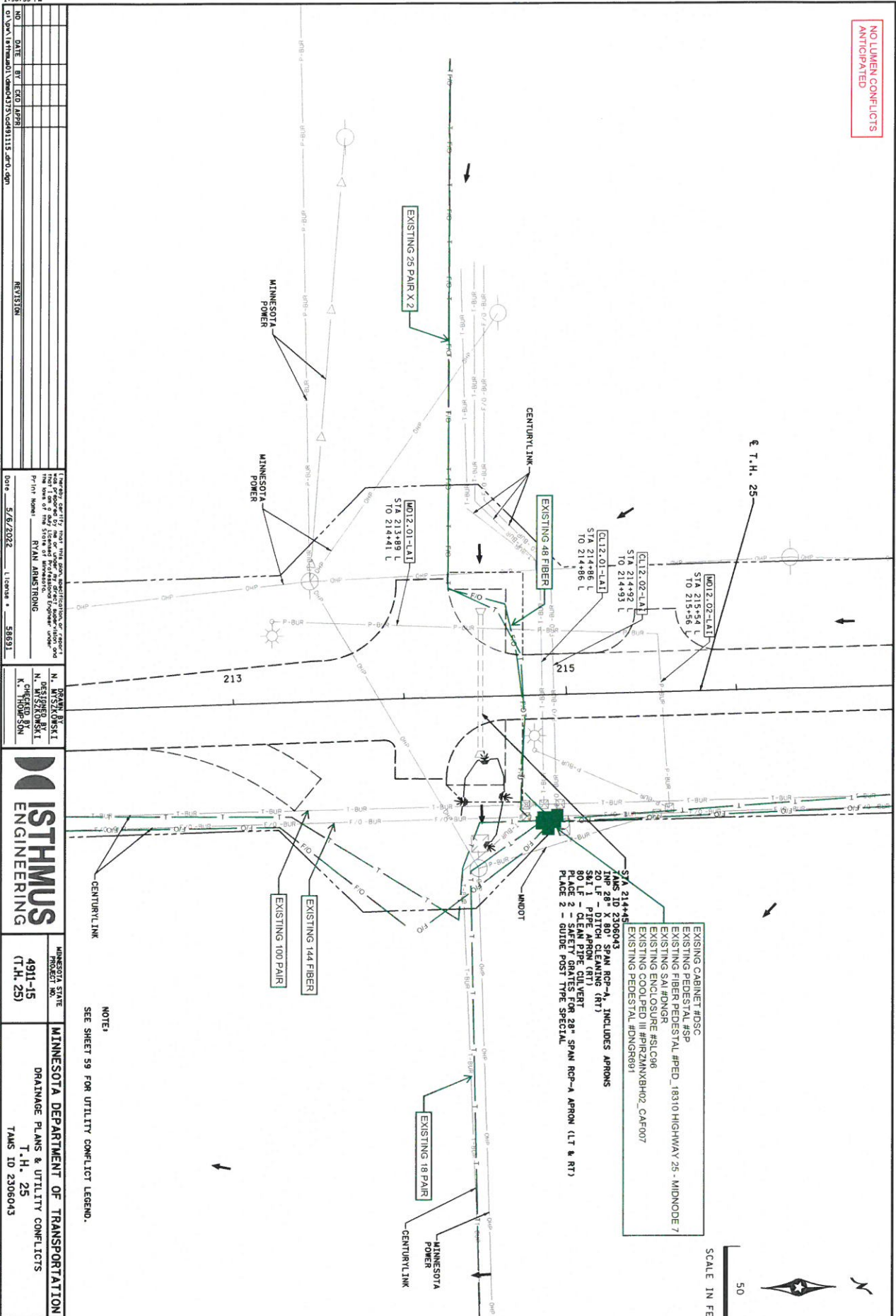
ISTHMUS ENGINEERING

MINNESOTA STATE PROJECT NO. 4911-15 (T.H. 25)

MINNESOTA DEPARTMENT OF TRANSPORTATION SHEET 88 OF 130
DRAINAGE PLANS & UTILITY CONFLICTS
T.H. 25
TAMS ID 218651 & 218652

FOR UTILITY DESIGN MEETING AND UTILITY RELOCATION PLANS

NO LUMEN CONFLICTS
ANTICIPATED



NO.	DATE	BY	CHKD	APPD	REVISION

I, the undersigned, hereby certify that I am a duly Licensed Professional Engineer in the State of Minnesota, License No. 56891, and that I am the author of the above described plans and specifications. My office is located at 1000 Hennepin Avenue, Suite 1000, Minneapolis, MN 55402.

Date: 5/6/2022 License: 56891
 Ryan Armstrong

M. AUSTIN
 N. STOKES
 K. THOMPSON
 Checked By



MINNESOTA STATE
 PROJECT NO. 4911-15
 (T.H. 25)

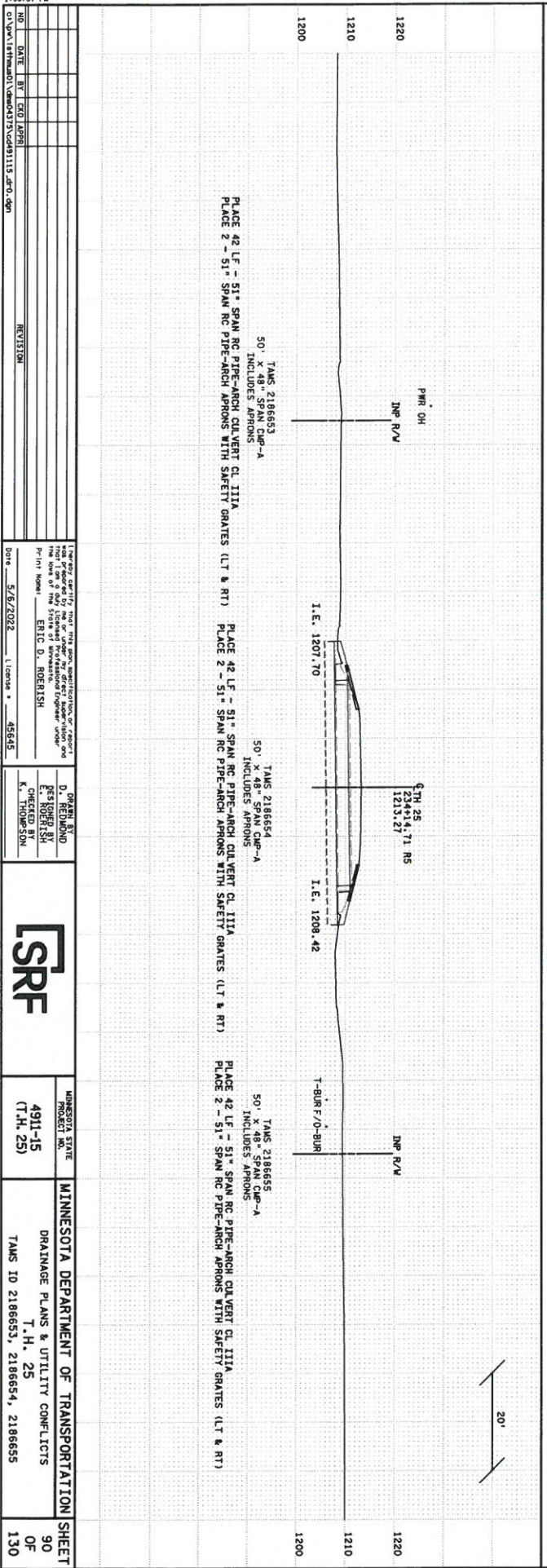
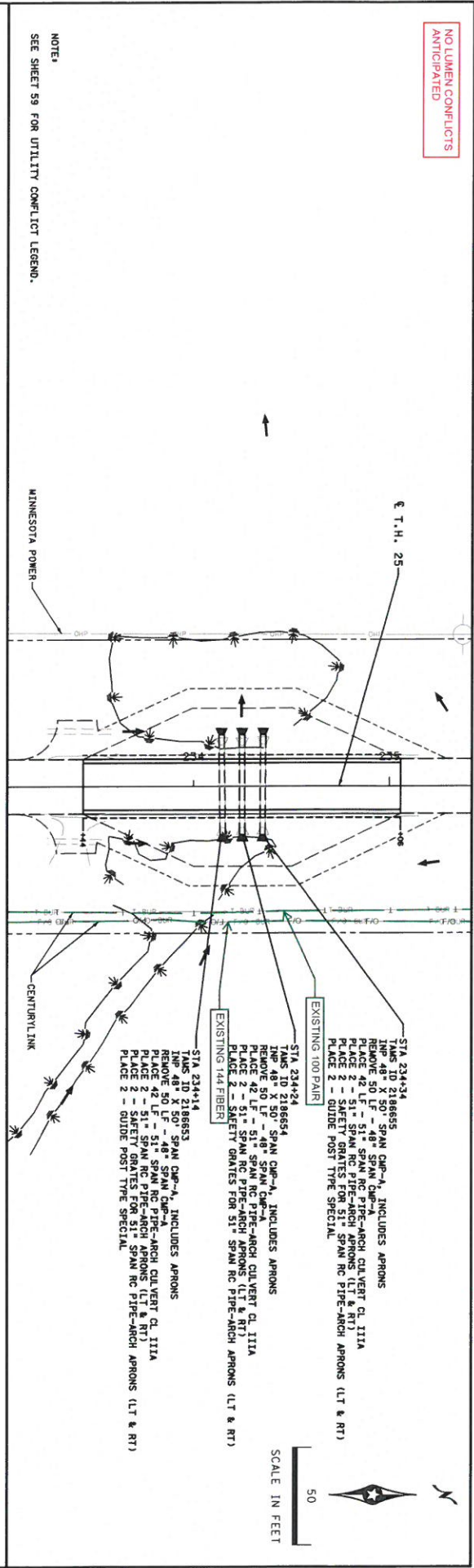
MINNESOTA DEPARTMENT OF TRANSPORTATION SHEET
 DRAINAGE PLANS & UTILITY CONFLICTS
 T.H. 25
 TAMS ID 2306043

89
 OF
 130

NOTE:
 SEE SHEET 59 FOR UTILITY CONFLICT LEGEND.

FOR UTILITY DESIGN MEETING AND UTILITY RELOCATION PLANS

NO LUMEN CONFLICTS
ANTICIPATED



NO.	DATE	BY	JOB	REVISION					
1	5/6/2022	ERIC D. ROBERTSH	DRAINAGE PLANS & UTILITY CONFLICTS						
2									
3									

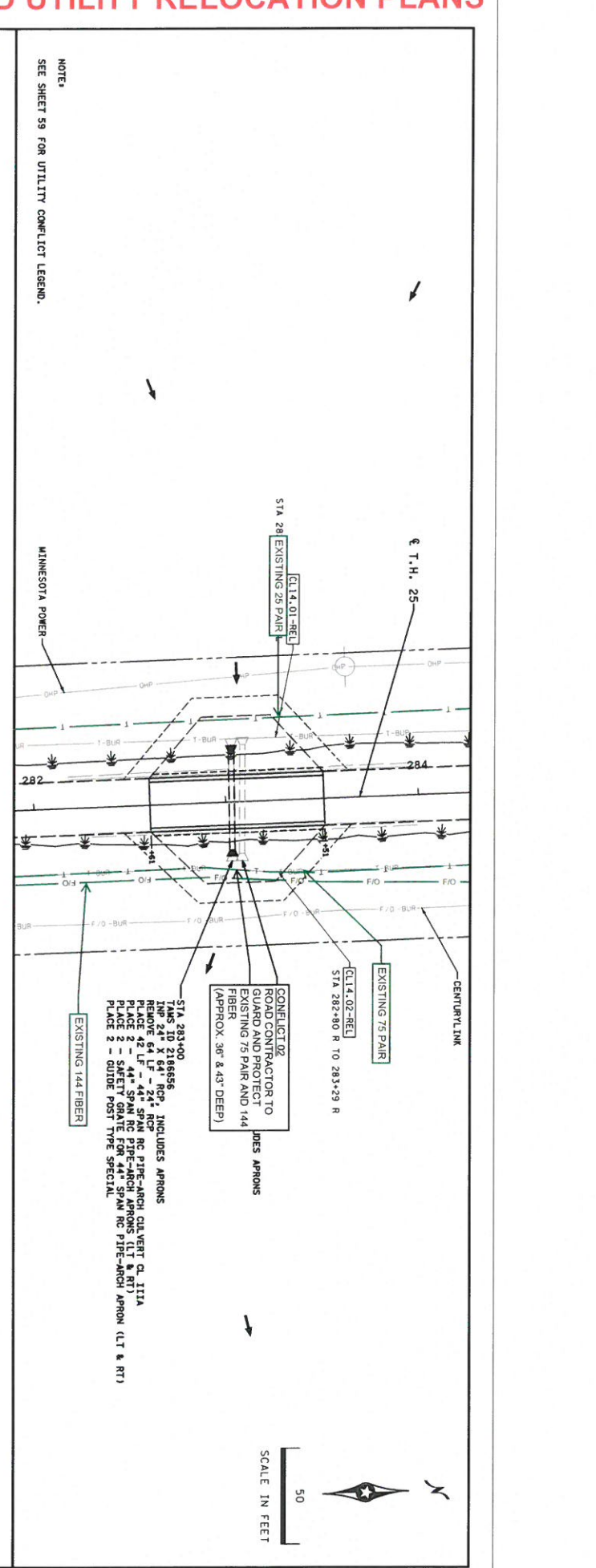
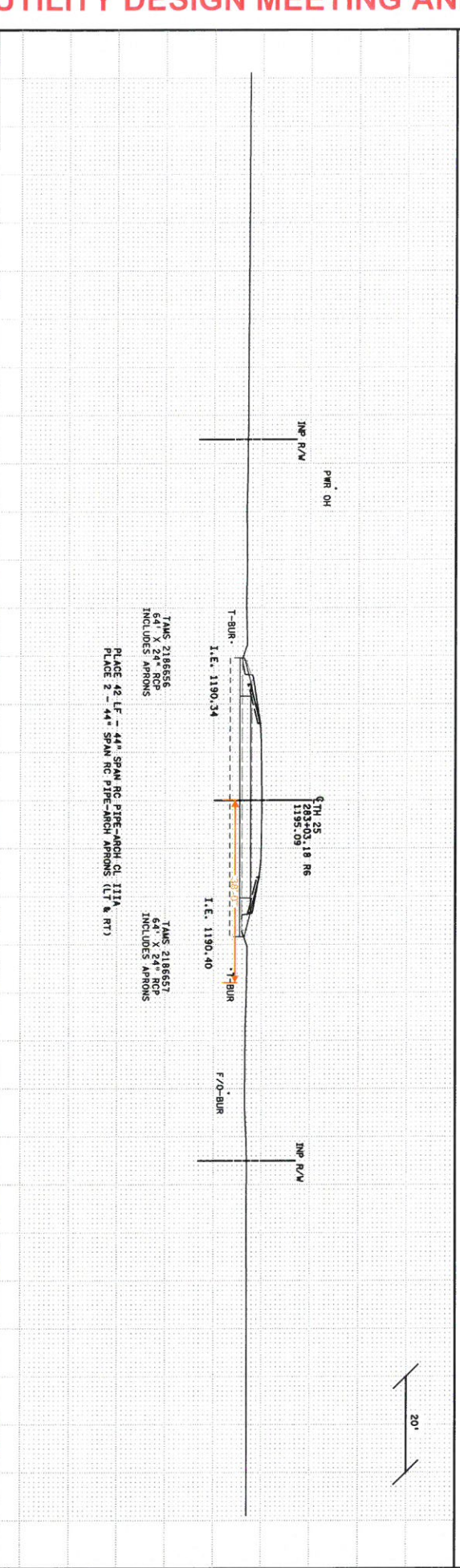
I hereby certify that the above representation of facts is true and correct to the best of my knowledge and belief, and that I am a duly Licensed Professional Engineer under the laws of the State of Minnesota. Project Name: DRAINAGE PLANS & UTILITY CONFLICTS Project Number: 4911-15 (T.H. 25) License Number: 45645	I hereby certify that the above representation of facts is true and correct to the best of my knowledge and belief, and that I am a duly Licensed Professional Engineer under the laws of the State of Minnesota. Project Name: DRAINAGE PLANS & UTILITY CONFLICTS Project Number: 4911-15 (T.H. 25) License Number: 45645
--	--

DRAIN BY ERIC D. ROBERTSH K. THOMPSON	MINNESOTA STATE PROJECT NO. 4911-15 (T.H. 25)
MINNESOTA DEPARTMENT OF TRANSPORTATION SHEET 90 OF 130	MINNESOTA DEPARTMENT OF TRANSPORTATION SHEET DRAINAGE PLANS & UTILITY CONFLICTS T.H. 25 TAMS 10 2186653, 2186654, 2186655

FOR UTILITY DESIGN MEETING AND UTILITY RELOCATION PLANS

NO.	DATE	BY	CHK'D	REVISED	REVISION

PROJECT NO. 4911-15 (T.H. 25) PROJECT NAME: DRAINAGE PLANS & UTILITY CONFLICTS T.H. 25 TAMS ID 2186556, 2186557	MINNESOTA STATE PROJECT NO. 4911-15 (T.H. 25) MINNESOTA DEPARTMENT OF TRANSPORTATION SHEET 91 OF 130
--	---



NOTE:
SEE SHEET 59 FOR UTILITY CONFLICT LEGEND.

MINNESOTA POWER

CENTURYLINK

CONFLICT 02
ROAD CONTRACTOR TO
GUARD AND PROTECT
EXISTING 75 PAIR AND 144
FIBER
(APPROX. 36" & 43" DEEP)

STA 283+00
TAMS ID 2186556
REMOVE 64 LF - 24" RCP
PLACE 42 LF - 44" SPAN RC PIPE-ARCH APRONS (LT & RT)
PLACE 2 - 44" SPAN RC PIPE-ARCH APRONS (LT & RT)
PLACE 2 - 44" SPAN RC PIPE-ARCH APRONS (LT & RT)
PLACE 2 - 44" SPAN RC PIPE-ARCH APRONS (LT & RT)
PLACE 2 - 44" SPAN RC PIPE-ARCH APRONS (LT & RT)
INCLUDES APRONS

TAMS 2186556
64" X 24" RCP
INCLUDES APRONS
PLACE 42 LF - 44" SPAN RC PIPE-ARCH APRONS (LT & RT)
PLACE 2 - 44" SPAN RC PIPE-ARCH APRONS (LT & RT)

TAMS 2186557
64" X 24" RCP
INCLUDES APRONS

DESIGNED BY: ERIC D. ROBRISH
CHECKED BY: K. THOMPSON
DATE: 5/6/2022
LICENSE # 45645



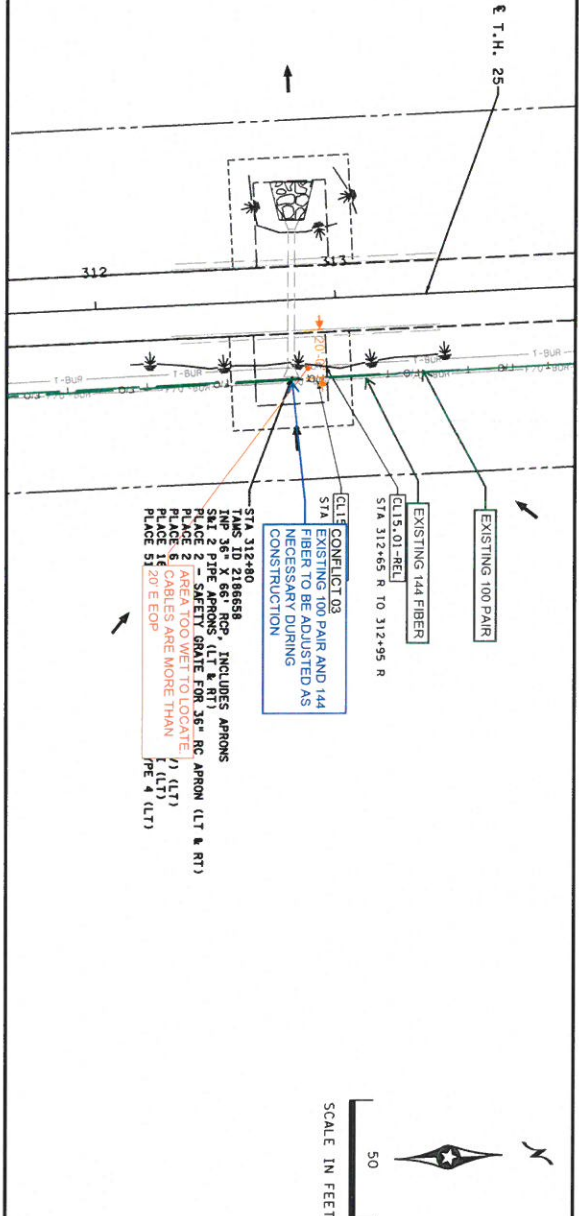
MINNESOTA STATE PROJECT NO. 4911-15 (T.H. 25)

MINNESOTA DEPARTMENT OF TRANSPORTATION SHEET 91 OF 130
DRAINAGE PLANS & UTILITY CONFLICTS
T.H. 25
TAMS ID 2186556, 2186557

FOR UTILITY DESIGN MEETING AND UTILITY RELOCATION PLANS

NO LUMEN CONFLICTS
ANTICIPATED

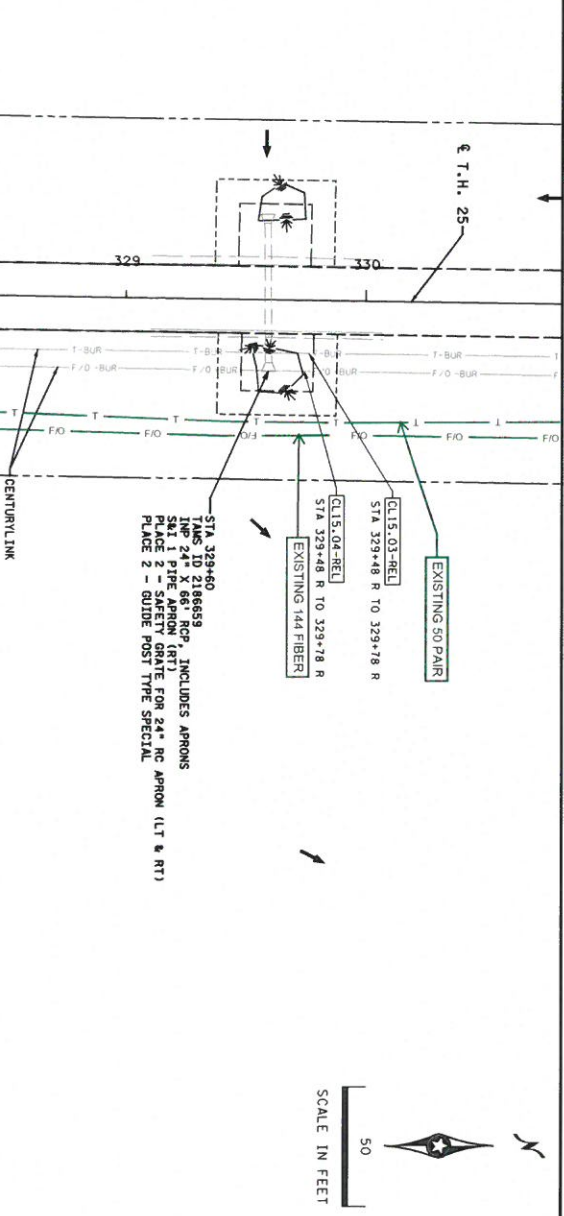
NOTE:
SEE SHEET 59 FOR UTILITY CONFLICT LEGEND.
FILL EXISTING SCOUR HOLE WITH COMMON EMBANKMENT (CV).



SCALE IN FEET
50

NO LUMEN CONFLICTS
ANTICIPATED

NOTE:
SEE SHEET 59 FOR UTILITY CONFLICT LEGEND.



SCALE IN FEET
50

DATE	BY	REV	NO	
5/6/2022	E.D.	1	1	DATE
REVISION				
DATE				
5/6/2022				
LICENSE # 45643				
DATE				
5/6/2022				
LICENSE # 45643				
DATE				
5/6/2022				
LICENSE # 45643				
DATE				
5/6/2022				
LICENSE # 45643				



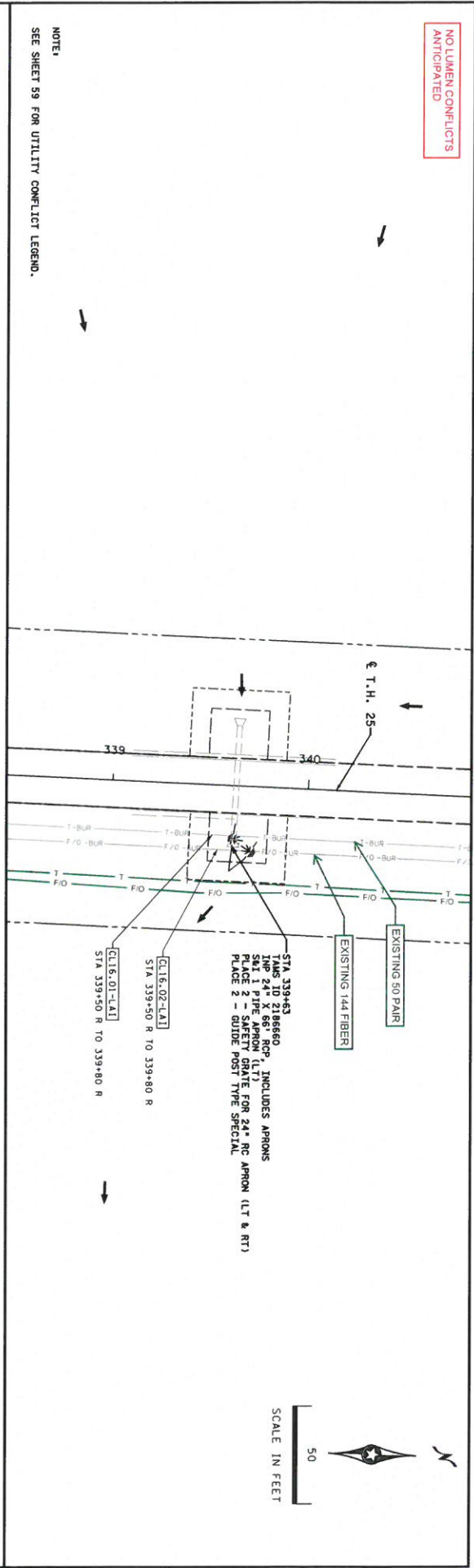
MINNESOTA STATE
PROJECT NO. 4911-15
(T.H. 25)

MINNESOTA DEPARTMENT OF TRANSPORTATION SHEET
DRAINAGE PLANS & UTILITY CONFLICTS
T.H. 25
TAMS ID 2186558, 2186559

92
OF
130

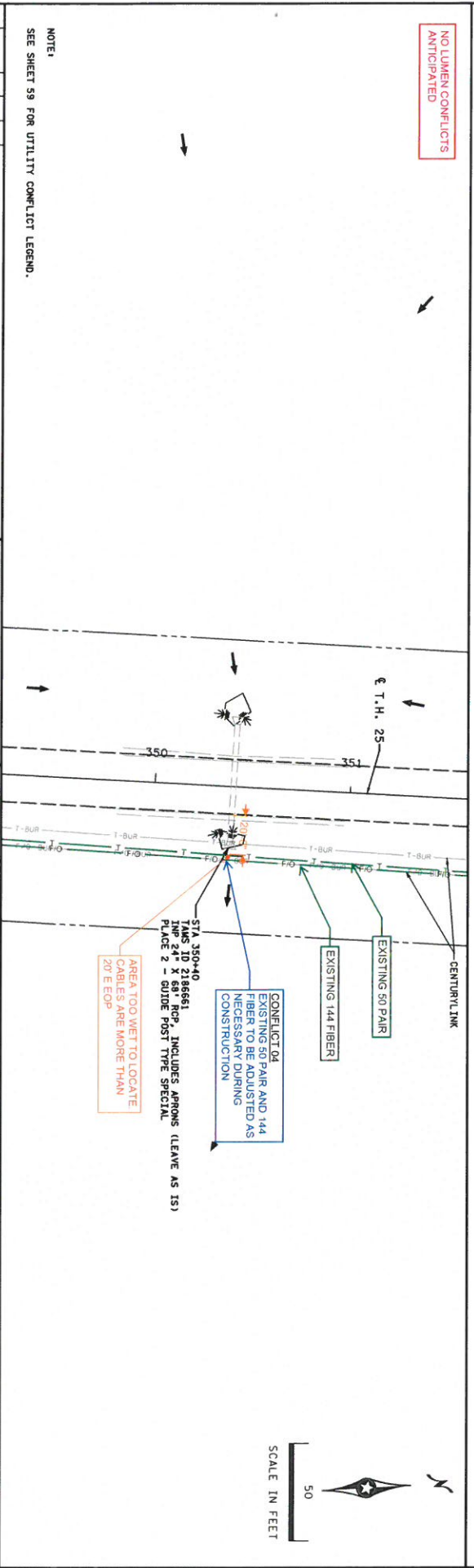
FOR UTILITY DESIGN MEETING AND UTILITY RELOCATION PLANS

NO LUMEN CONFLICTS ANTICIPATED



NOTE:
SEE SHEET 59 FOR UTILITY CONFLICT LEGEND.

NO LUMEN CONFLICTS ANTICIPATED



NOTE:
SEE SHEET 59 FOR UTILITY CONFLICT LEGEND.



CONFLICT OF EXISTING 50 PAIR AND 144 FIBER TO BE ADJUSTED AS NECESSARY DURING CONSTRUCTION

STA 339+40
IMP 24" X 66" RCP, INCLUDES APRONS (LEAVE AS IS)
PLACE 2 - GUIDE POST TYPE SPECIAL

AREA TOO WET TO LOCATE MANHOLE DEPTH MORE THAN 20' E.O.P.

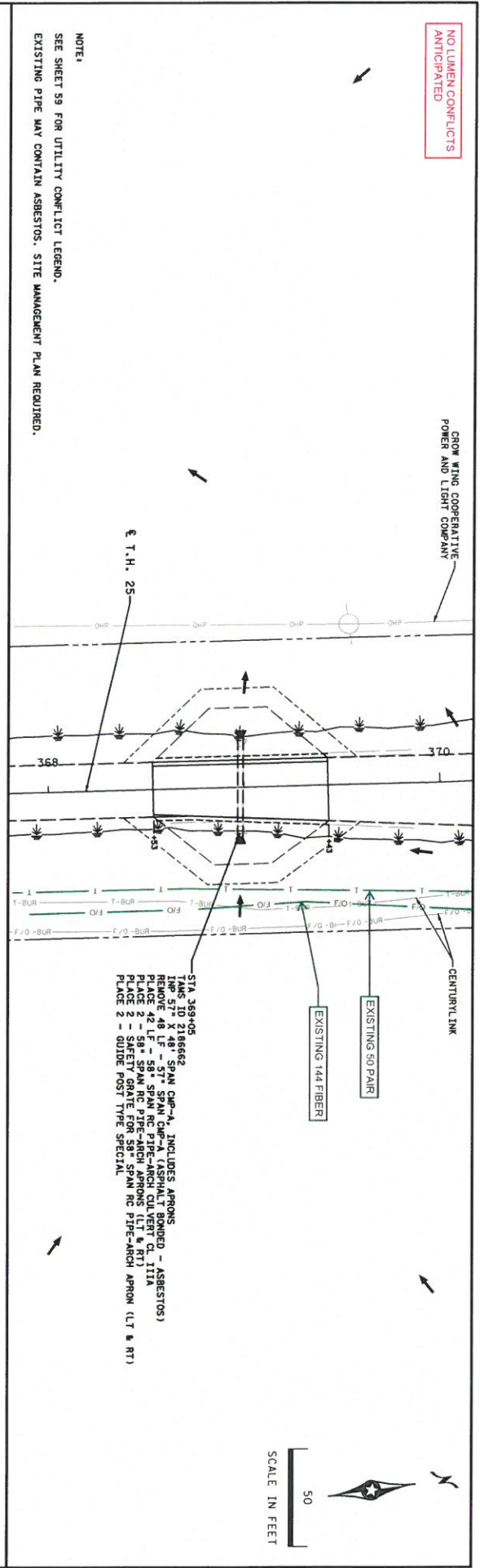
NO.	DATE	BY	DESCRIPTION	REVISION
1	05/15/22	DR	ISSUE FOR PERMIT	
2	05/15/22	DR	ISSUE FOR PERMIT	
3	05/15/22	DR	ISSUE FOR PERMIT	
4	05/15/22	DR	ISSUE FOR PERMIT	
5	05/15/22	DR	ISSUE FOR PERMIT	
6	05/15/22	DR	ISSUE FOR PERMIT	
7	05/15/22	DR	ISSUE FOR PERMIT	
8	05/15/22	DR	ISSUE FOR PERMIT	
9	05/15/22	DR	ISSUE FOR PERMIT	
10	05/15/22	DR	ISSUE FOR PERMIT	

DATE	5/6/2022	LICENSE #	45643
PROJECT NO.	4911-15 (T.H. 25)	CHECKED BY	K. THOMPSON
PROJECT NAME	DRAINAGE PLANS & UTILITY CONFLICTS	DESIGNED BY	D. REDMOND
PROJECT LOCATION	T.H. 25	PROJECT MANAGER	E. ROBERTS
PROJECT NUMBER	TAMS ID 2186660, 2186661	PROJECT ENGINEER	ERIC D. ROBERTS
PROJECT TITLE	MINNESOTA DEPARTMENT OF TRANSPORTATION SHEET 93 OF 130	PROJECT SUPERVISOR	

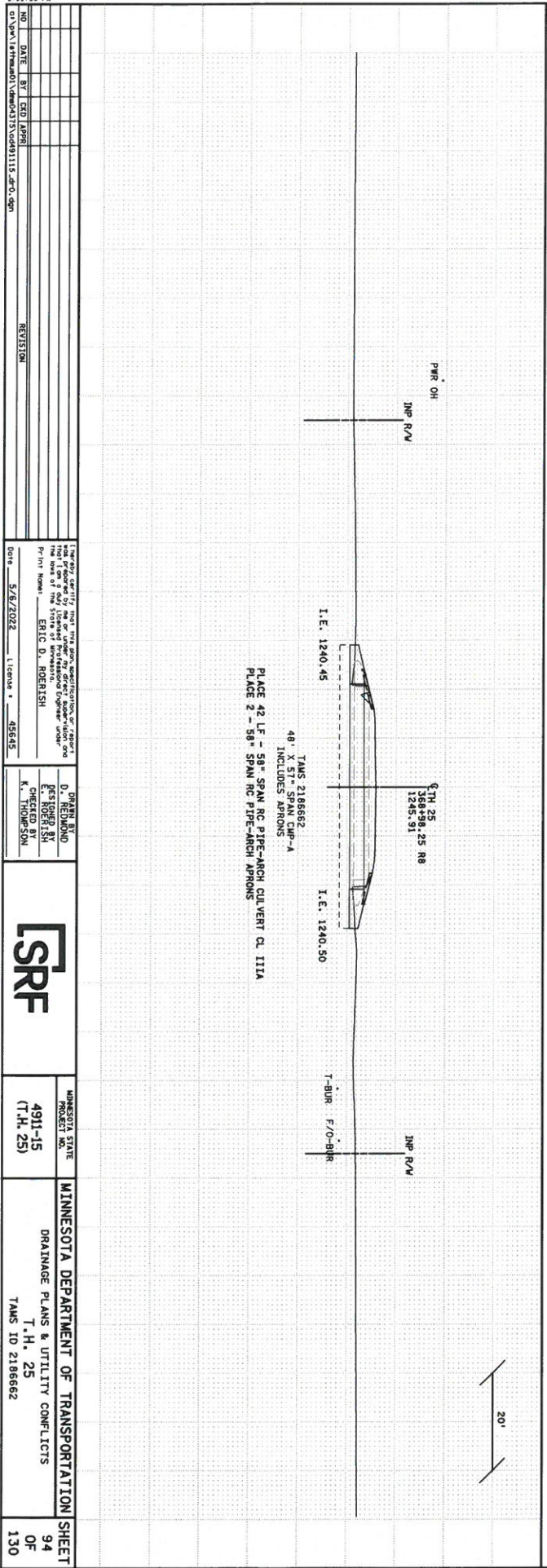
FOR UTILITY DESIGN MEETING AND UTILITY RELOCATION PLANS

NO LUMEN CONFLICTS ANTICIPATED

SHOW WIND COOPERATIVE POWER AND LIGHT CORP. MAIN



NOTE:
SEE SHEET 59 FOR UTILITY CONFLICT LEGEND.
EXISTING PIPE MAY CONTAIN ASBESTOS. SITE MANAGEMENT PLAN REQUIRED.



NO.	DATE	BY	CDD	APP'D	REVISION

PROJECT NO. 4911-15 (T.H. 25) PROJECT NAME: DRAINAGE PLANS & UTILITY CONFLICTS T.H. 25 TAMS ID 2186662	DRAWN BY: D. DRABIN, BUD ROEBER CHECKED BY: E. ROEBER, K. THOMPSON DATE: 5/6/2022 LICENSE: 45545
---	---

	MINNESOTA STATE PROJECT NO. 4911-15 (T.H. 25) MINNESOTA DEPARTMENT OF TRANSPORTATION SHEET DRAINAGE PLANS & UTILITY CONFLICTS T.H. 25 TAMS ID 2186662
--	---

FOR UTILITY DESIGN MEETING AND UTILITY RELOCATION PLANS

NO LUMEN CONFLICTS ANTICIPATED

NO.	DATE	BY	CHKD	REVISION
1	5/6/2022	ERIC D. ROERISH		
2				
3				
4				
5				
6				
7				
8				
9				
10				

DATE: 5/6/2022
 LICENSE # 45545
 PROJECT NO. 4911-15 (T.H. 25)
 TAMS ID 2186663

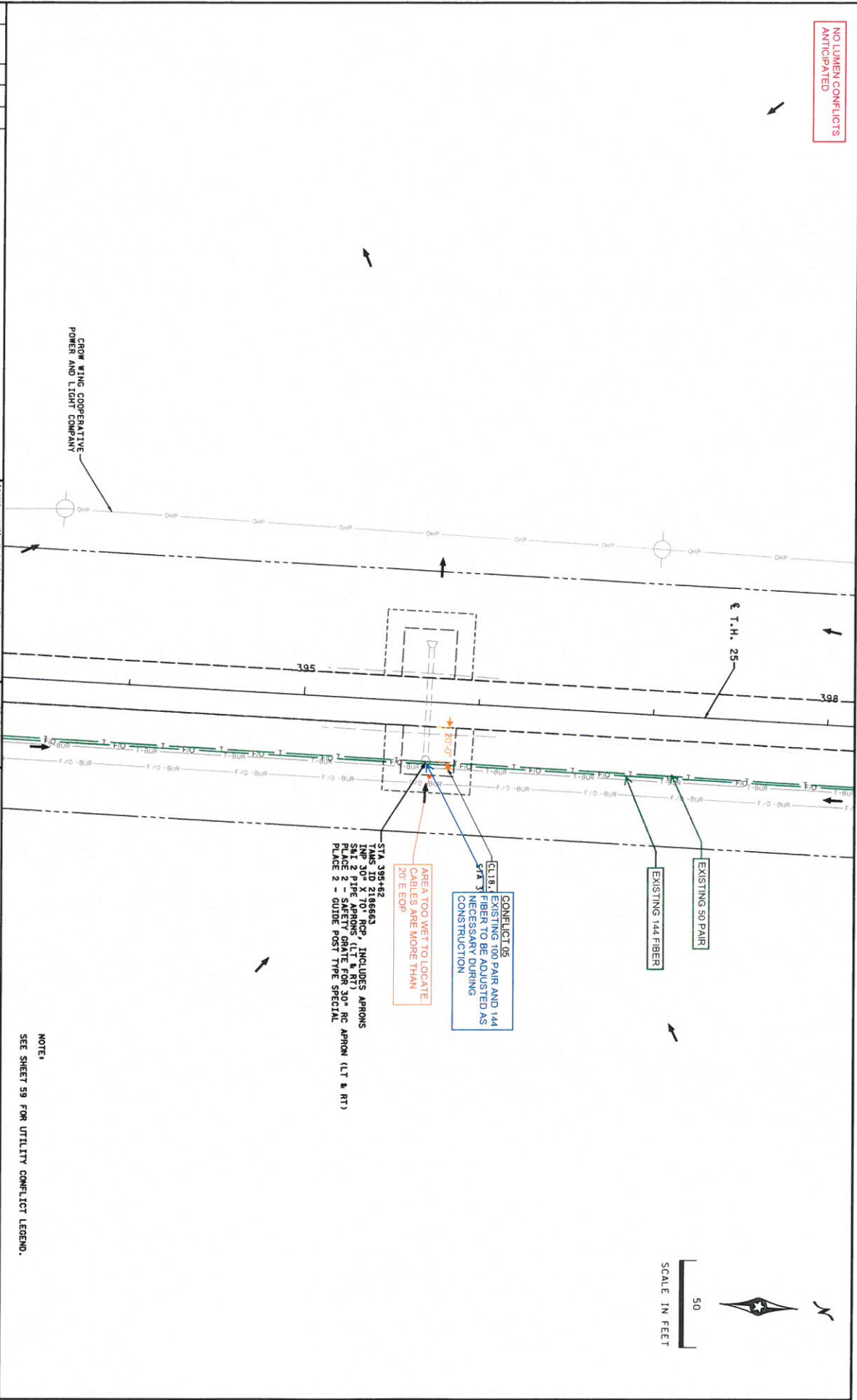
DRAWN BY: D. HELDING
 CHECKED BY: E. ROERISH
 K. THOMPSON



MINNESOTA STATE PROJECT NO. 4911-15 (T.H. 25)

MINNESOTA DEPARTMENT OF TRANSPORTATION
 DRAINAGE PLANS & UTILITY CONFLICTS
 T.H. 25
 TAMS ID 2186663

SHEET 95 OF 130



CONFLICT 05
 EXISTING 100 PAIR AND 144
 FIBER TO BE ADJUSTED AS
 NECESSARY DURING
 CONSTRUCTION

EXISTING 50 PAIR

EXISTING 144 FIBER

AREA TOO WET TO LOCATE
 CABLES ARE MORE THAN
 20' E EOP

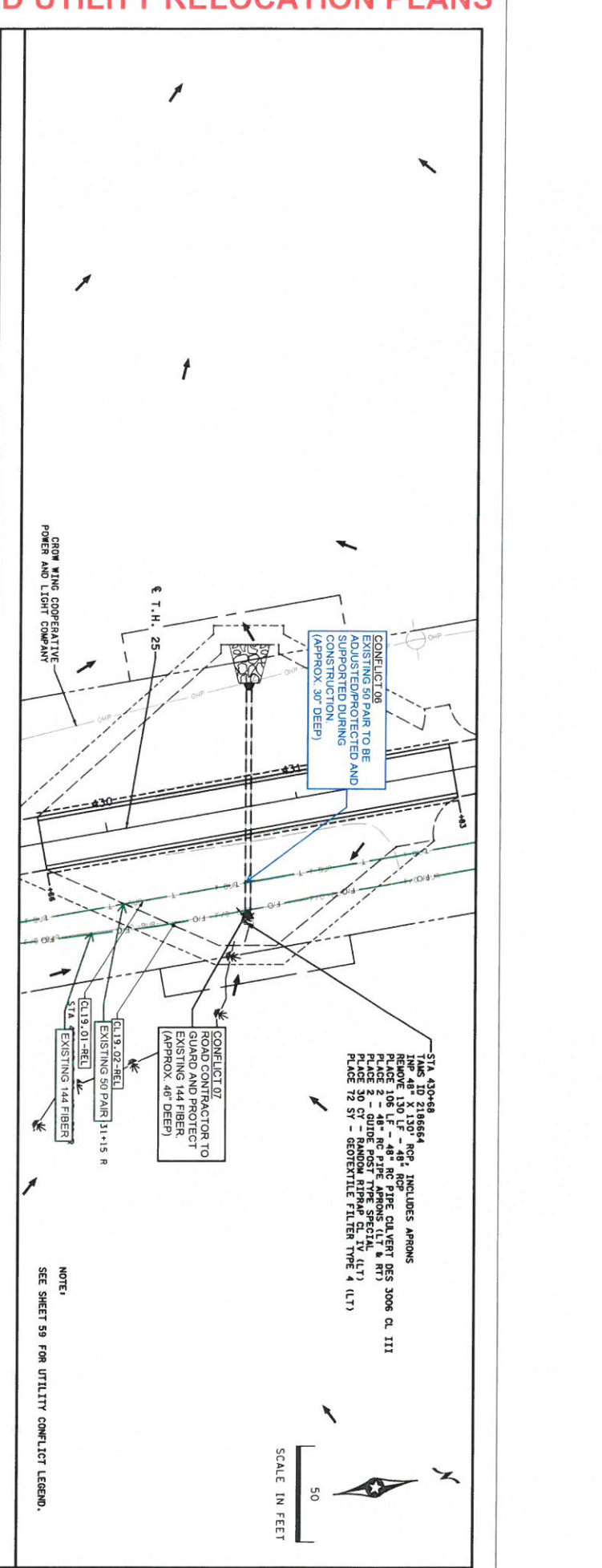
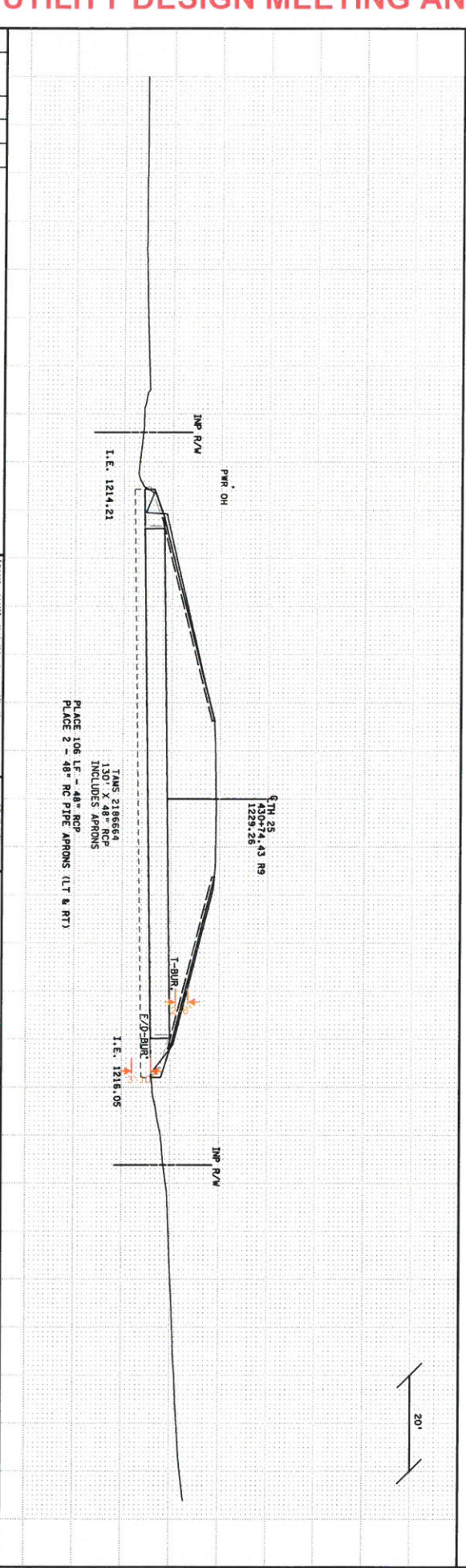
STA 395+62
 TAMS ID 2186663
 MANHOLE TO TOP, INCLUDES APRONS
 30" PIPE TO APRON (LT & RT)
 PLACE 2 - SAFETY GRATE FOR 30" RC APRON (LT & RT)
 PLACE 2 - GUIDE POST TYPE SPECIAL

NOTE:
 SEE SHEET 59 FOR UTILITY CONFLICT LEGEND.

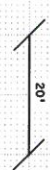


FOR UTILITY DESIGN MEETING AND UTILITY RELOCATION PLANS

NO.	DATE	BY	REVISION
PROJECT NO. 4911-15 (T.H. 25) SHEET 96 OF 130			
DRAWN BY: D. J. HEDRUND CHECKED BY: E. ROERLICH K. THOMPSON			
MINNESOTA STATE DEPARTMENT OF TRANSPORTATION DRAINAGE PLANS & UTILITY CONFLICTS T.H. 25 TAMS 10 2186664			

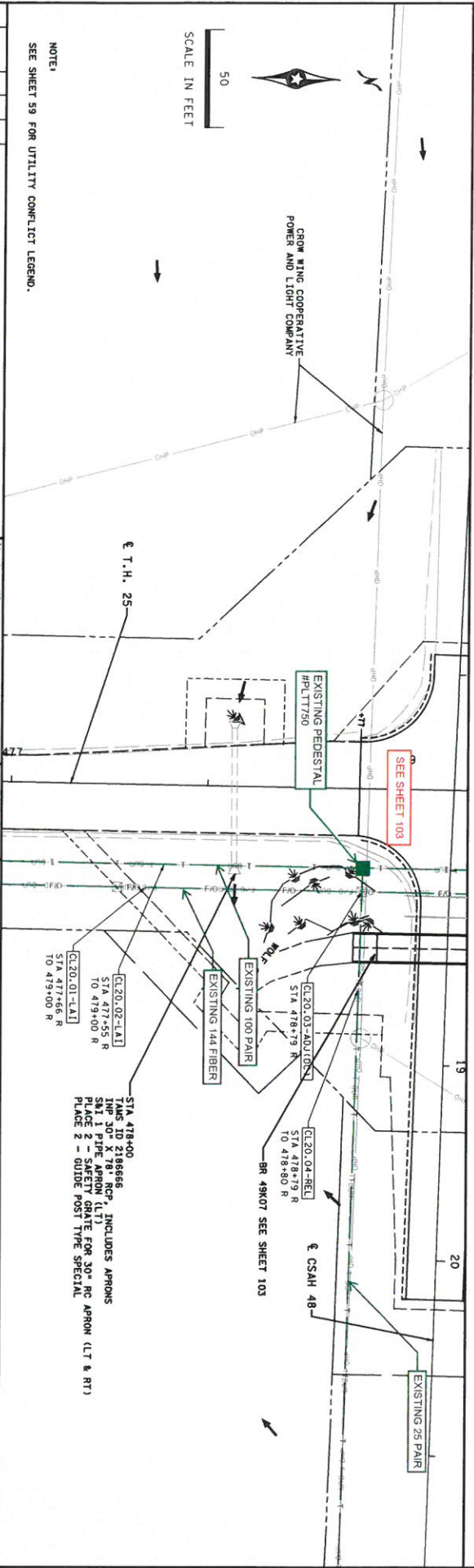
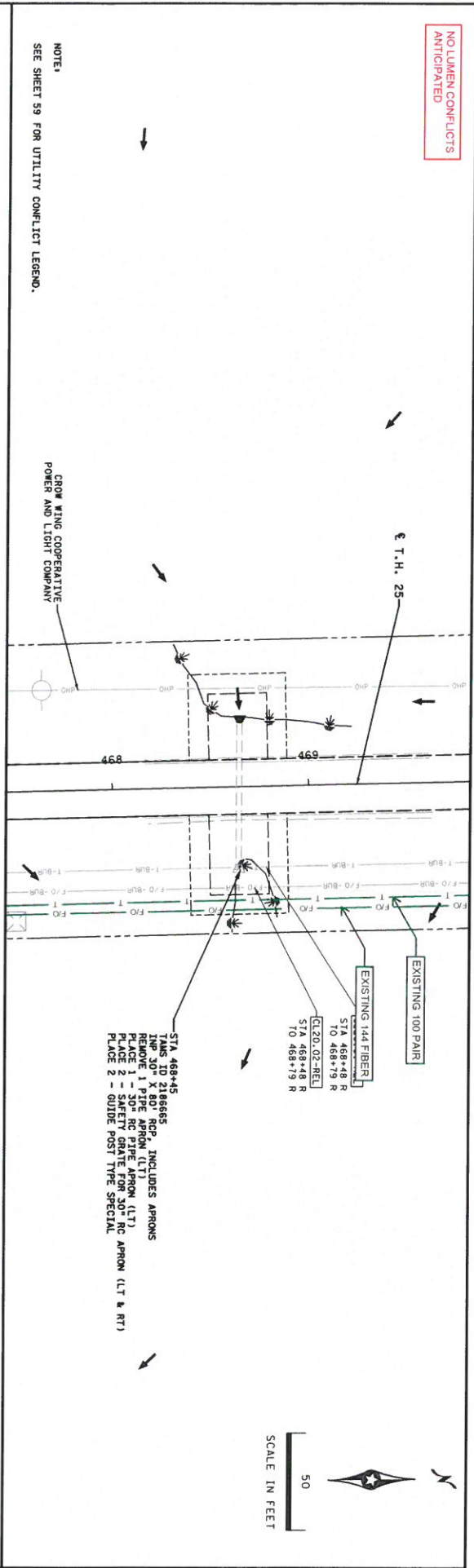


NOTE:
SEE SHEET 59 FOR UTILITY CONFLICT LEGEND.



FOR UTILITY DESIGN MEETING AND UTILITY RELOCATION PLANS

NO LUMEN CONFLICTS
ANTICIPATED

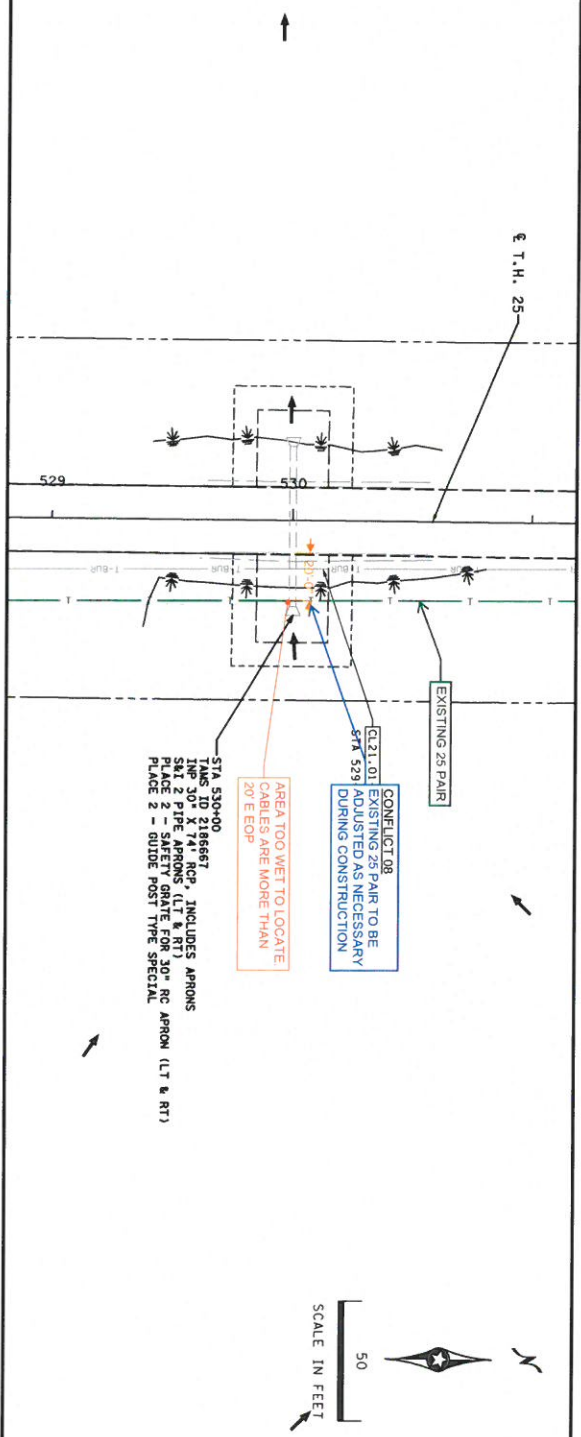


NO.	DATE	BY	FOR	REVISION
I hereby certify that this work was prepared by me or under my direct supervision and that I am a duly Licensed Professional Engineer under the laws of the State of Minnesota.				
License No. ERIC D. ROERISH				
Date: 5/6/2022 License # 455143				
D. REDMOND ERIC D. ROERISH CHECKED BY K. THOMPSON				
SRF		MINNESOTA STATE 4911-15 (T.H. 25)		MINNESOTA DEPARTMENT OF TRANSPORTATION DRAINAGE PLANS & UTILITY CONFLICTS T.H. 25 TAMS ID 2186655, 2186666
SHEET		97		130

FOR UTILITY DESIGN MEETING AND UTILITY RELOCATION PLANS

NO LUMEN CONFLICTS
ANTICIPATED

NOTE:
SEE SHEET 59 FOR UTILITY CONFLICT LEGEND.



CONFLICT 08
EXISTING 25 PAIR TO BE ADJUSTED AS NECESSARY DURING CONSTRUCTION

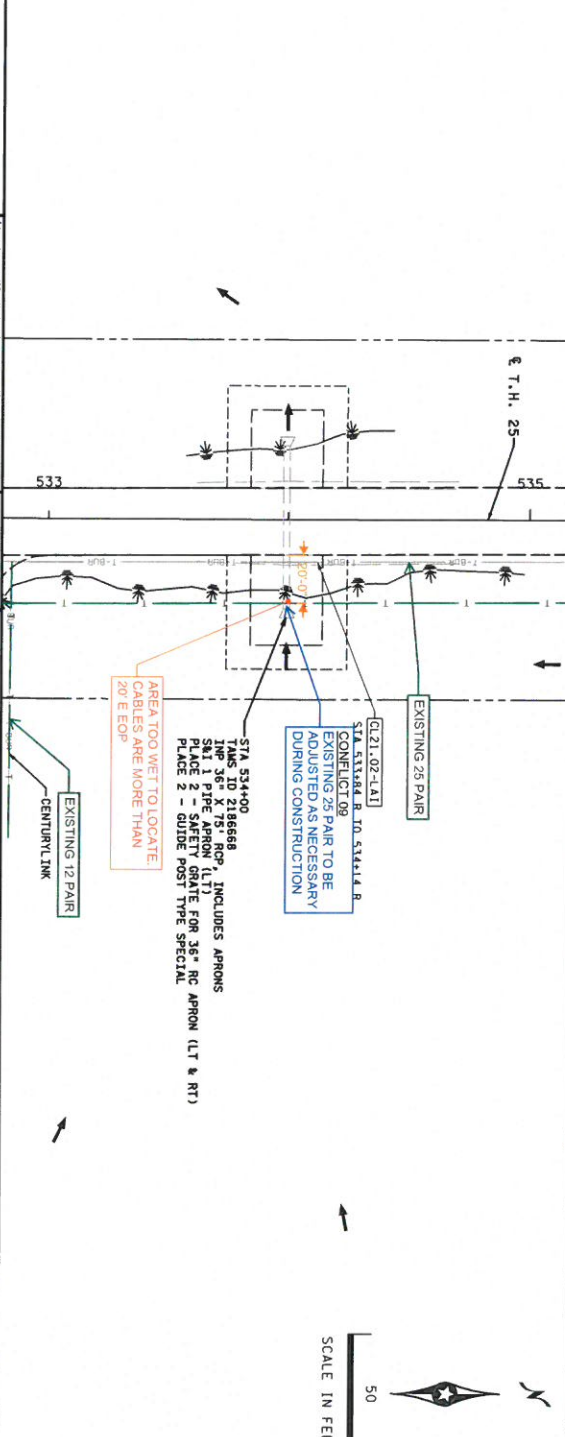
STA 529.01

AREA TOO WET TO LOCATE
CABLES ARE MORE THAN 20' E EOP

STA 530+00
TAMS ID 2186667, INCLUDES APRONS
SHT 1 - PIPE APRON (LT & RT)
PLACE 2 - SAFETY GRATE FOR 30" RC APRON (LT & RT)
PLACE 2 - GUIDE POST TYPE SPECIAL

NO LUMEN CONFLICTS
ANTICIPATED

NOTE:
SEE SHEET 59 FOR UTILITY CONFLICT LEGEND.



CONFLICT 09
EXISTING 25 PAIR TO BE ADJUSTED AS NECESSARY DURING CONSTRUCTION

STA 534+00
TAMS ID 2186668, INCLUDES APRONS
SHT 1 - PIPE APRON (LT)
SHT 2 - SAFETY GRATE FOR 30" RC APRON (LT & RT)
PLACE 2 - GUIDE POST TYPE SPECIAL

AREA TOO WET TO LOCATE
CABLES ARE MORE THAN 20' E EOP

NO.	DATE	BY	CHKD	APPD	REVISION
1	5/6/2022	ERIC D. ROBERTSON	ERIC D. ROBERTSON		

Eric D. Robertson, P.E.
Professional Engineer
License # 455445
Date: 5/6/2022

D. HEDRICK
Checked by
K. THOMPSON



MINNESOTA STATE
PROJECT NO. 4911-15
(T.H. 25)

MINNESOTA DEPARTMENT OF TRANSPORTATION
DRAINAGE PLANS & UTILITY CONFLICTS
T.H. 25
TAMS ID 2186667, 2186668

SHEET 98 OF 130

FOR UTILITY DESIGN MEETING AND UTILITY RELOCATION PLANS

NO LUMEN CONFLICTS
ANTICIPATED

NO.	DATE	BY	CHKD	APPRI.

NO.	DATE	REVISION

DATE: 5/6/2022
 PROJECT: 4911-15
 DRAWN BY: D. REDMOND
 CHECKED BY: E.S. ROBERTSH
 K. THOMPSON
 DATE: 5/6/2022
 LICENSE # 45645

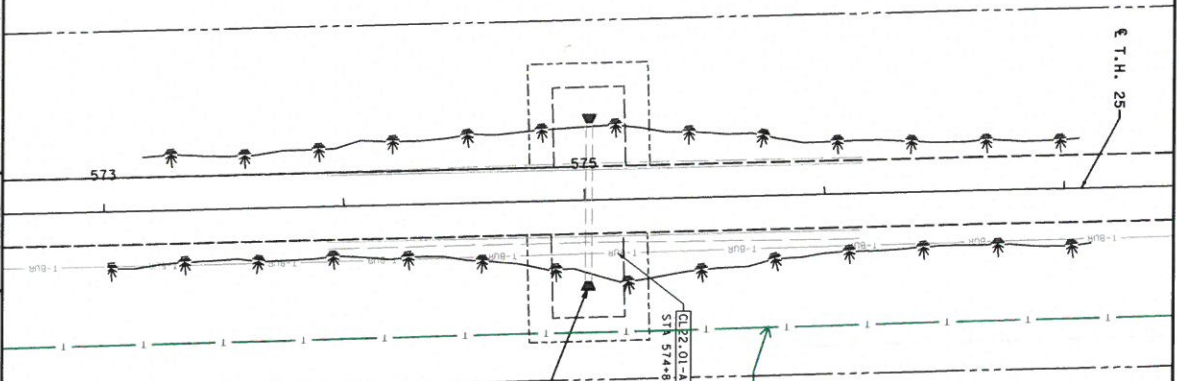
PROFESSIONAL ENGINEER
 ERIC D. ROBERTSH
 LICENSE # 45645



MINNESOTA STATE
 PROJECT NO. 4911-15
 (T.H. 25)

MINNESOTA DEPARTMENT OF TRANSPORTATION
 DRAINAGE PLANS & UTILITY CONFLICTS
 T.H. 25
 TAMS ID 2196669

SHEET 99
 OF 130



STA 575+00
 TAMS ID 2196669
 REMOVE 2 PIPE RC SAFETY APRONS (LT & RT)
 PLACE 2 - 36" RC SAFETY APRONS (LT & RT)
 PLACE 2 - GUIDE POST TYPE SPECIAL

EXISTING 26 PAIR
 STA 574+85 R TO 575+16 R

VINEGAR LAKE



NOTE:
 SEE SHEET 99 FOR UTILITY CONFLICT LEGEND.

FOR UTILITY DESIGN MEETING AND UTILITY RELOCATION PLANS

DATE: 5/6/2022
 TIME: 11:51:42 PM

NO.	DATE	BY	DESCRIPTION	REVISION
1				
2				
3				
4				
5				
6				
7				
8				
9				
10				

PROJECT NO. 1504801115
 DATE 5/6/2022
 LICENSE # 45545

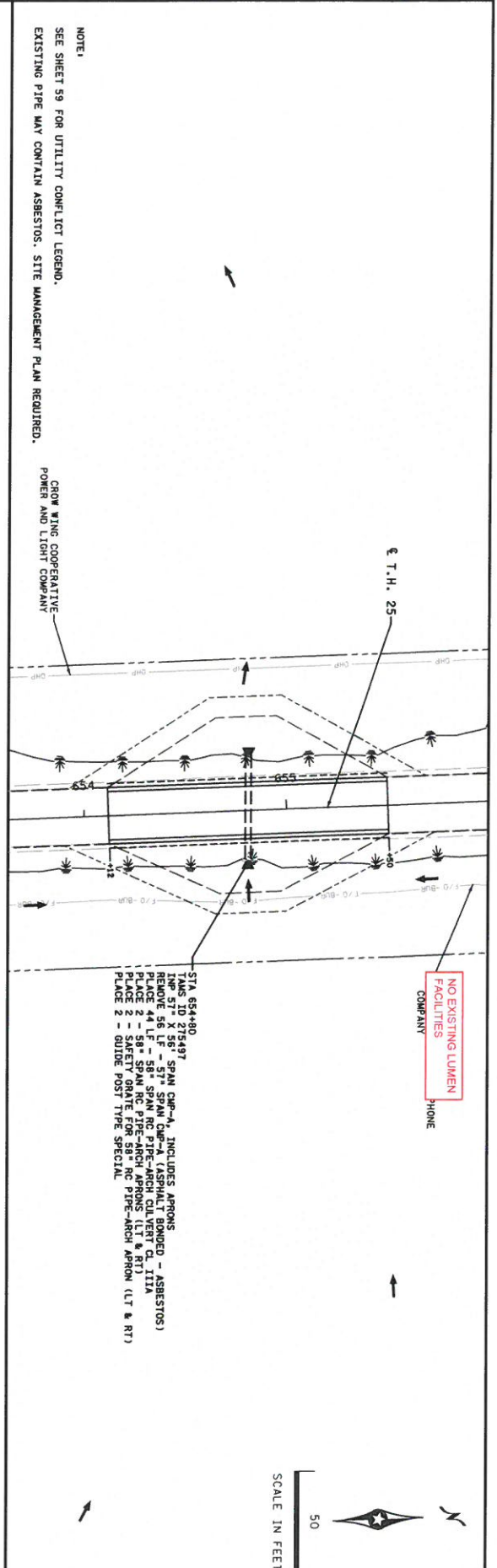
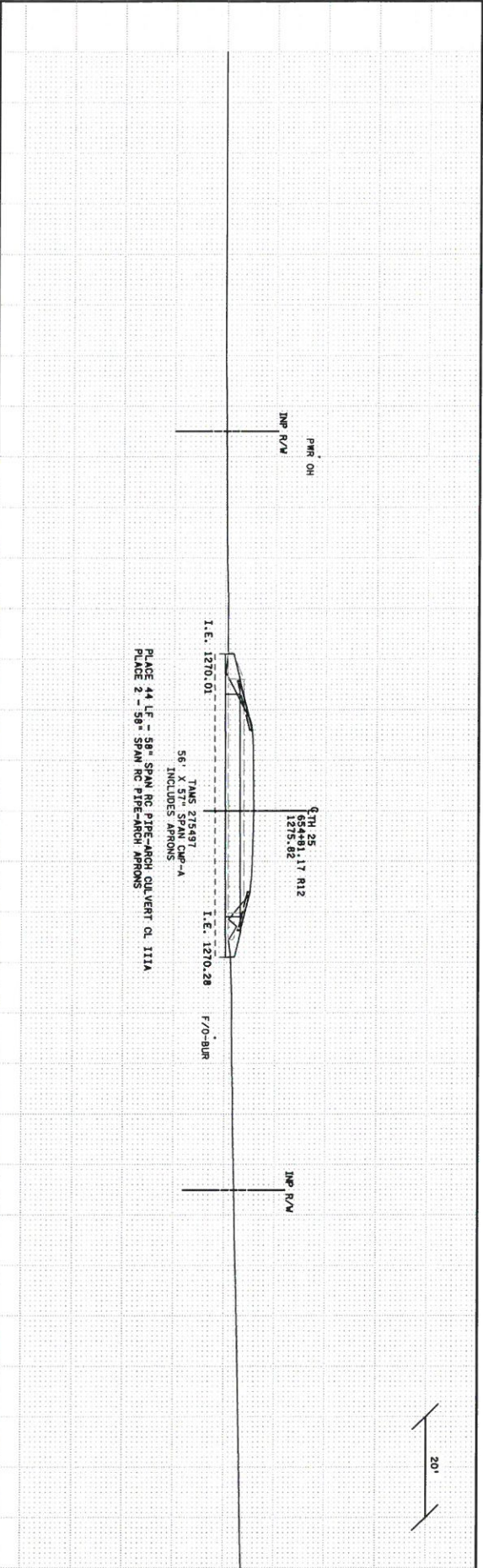
DRAWN BY: D. HEDRANO
 DESIGNED BY: E. ROBERTSON
 CHECKED BY: K. THOMPSON



MINNESOTA STATE PROJECT NO. 4911-15 (T.H. 25)

MINNESOTA DEPARTMENT OF TRANSPORTATION
 DRAINAGE PLANS & UTILITY CONFLICTS
 T.H. 25
 TAMS ID 275497

SHEET 100 OF 130



NOTE:
 SEE SHEET 59 FOR UTILITY CONFLICT LEGEND.
 EXISTING PIPE MAY CONTAIN ASBESTOS. SITE MANAGEMENT PLAN REQUIRED.

CONTRACTOR COOPERATIVE
 POWER AND LIGHT COMPANY

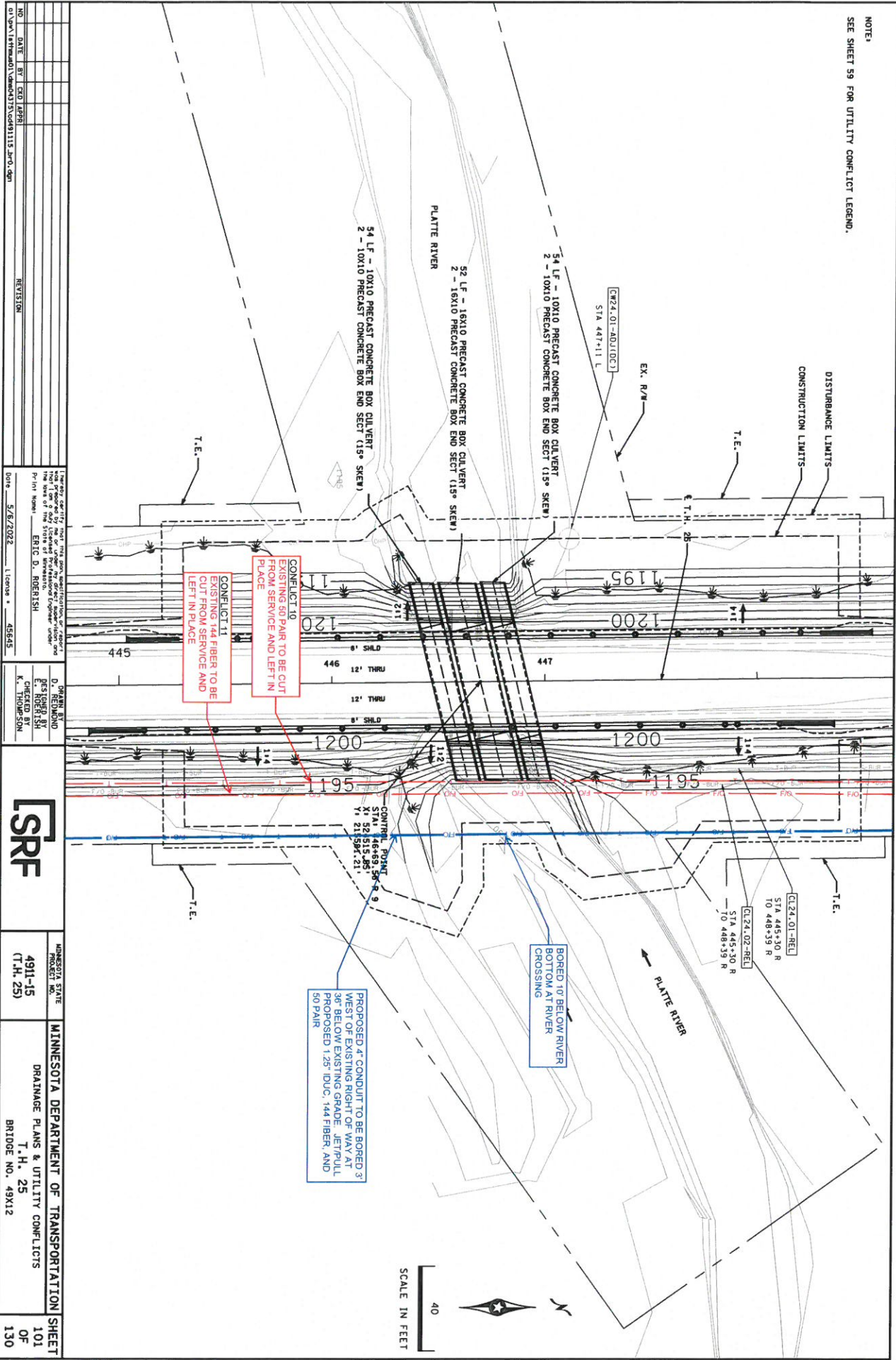
NO EXISTING LUMEN FACILITIES PHONE COMPANY
 STA 554+80
 TAMS ID 275497
 TAMS 57' X 56' SPAN CMP-A, INCLUDES APRONS
 BEFORE 58' LF - 57' SPAN CMP-A (ASPHALT BOUNDED - ASBESTOS)
 PLACE 1 - SAFETY GRATE FOR 58' RC PIPE-ARCH APRONS (LT & RT)
 PLACE 2 - 58' SPAN RC PIPE-ARCH APRONS (LT & RT)
 PLACE 2 - SAFETY GRATE FOR 58' RC PIPE-ARCH APRON (LT & RT)
 PLACE 2 - GUIDE POST TYPE SPECIAL



20'

FOR UTILITY DESIGN MEETING AND UTILITY RELOCATION PLANS

NOTE:
SEE SHEET 59 FOR UTILITY CONFLICT LEGEND.



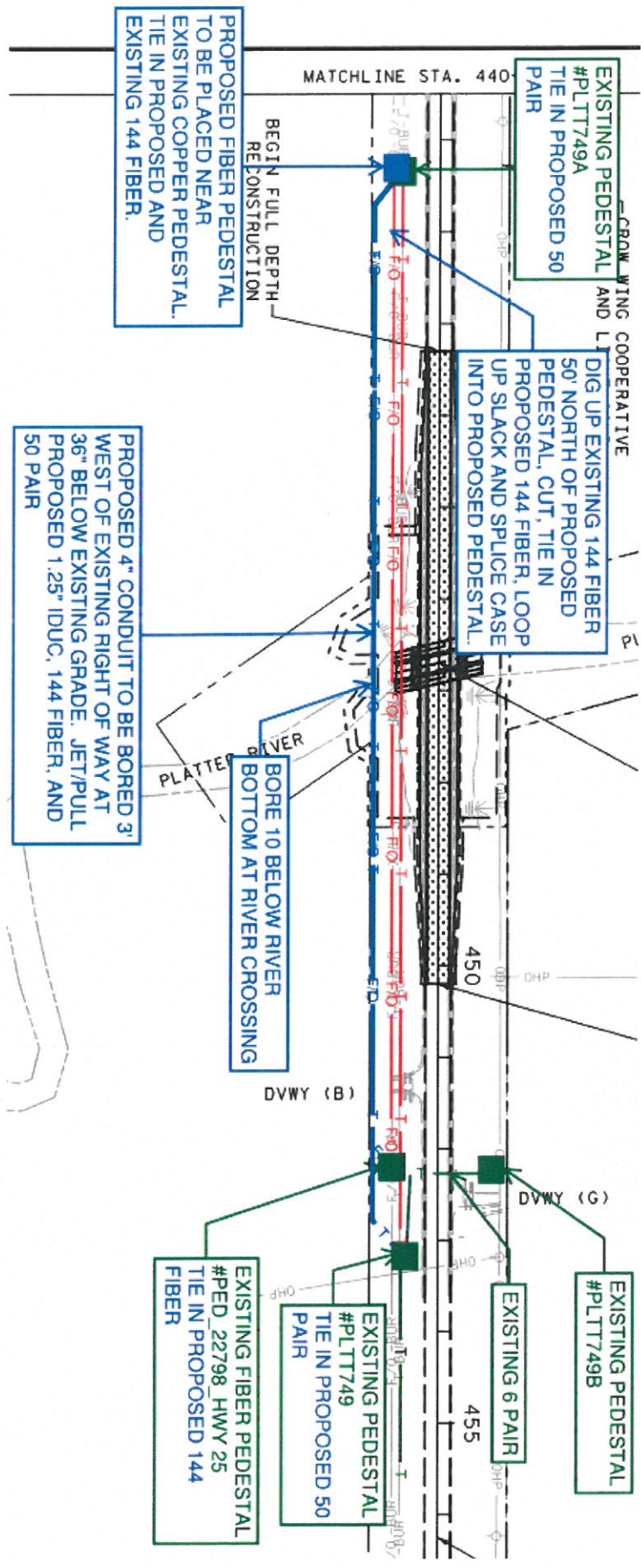
NO.	DATE	BY	CHKD	REVISION
1	5/6/2022	ER	CDJ	18281
DRAWN BY: ERIC D. ROBRISH				
CHECKED BY: K. THOMPSON				
DATE: 5/6/2022				

PROJECT NO. 4911-15
T.H. 25
BRIDGE NO. 49X12

SRF MINNESOTA STATE PROJECT NO. 4911-15 (T.H. 25) MINNESOTA DEPARTMENT OF TRANSPORTATION SHEET 101 OF 130

DRAINAGE PLANS & UTILITY CONFLICTS
T.H. 25
BRIDGE NO. 49X12

MINNESOTA STATE PROJECT NO. 4911-15
T.H. 25
BRIDGE NO. 49X12



PROPOSED FIBER PEDESTAL TO BE PLACED NEAR EXISTING COPPER PEDESTAL. TIE IN PROPOSED AND EXISTING 144 FIBER.

EXISTING PEDESTAL #PLTT749A TIE IN PROPOSED 50 PAIR

DIG UP EXISTING 144 FIBER 50' NORTH OF PROPOSED PEDESTAL. CUT, TIE IN PROPOSED 144 FIBER. LOOP UP SLACK AND SPLICE CASE INTO PROPOSED PEDESTAL.

PROPOSED 4" CONDUIT TO BE BORED 3' WEST OF EXISTING GRADE. JET/PULL PROPOSED 1.25" IDUC, 144 FIBER, AND 50 PAIR

BORING 10 BELOW RIVER BOTTOM AT RIVER CROSSING

EXISTING PEDESTAL #PLTT749B

EXISTING 6 PAIR

EXISTING PEDESTAL #PLTT749 TIE IN PROPOSED 50 PAIR

EXISTING FIBER PEDESTAL #PED_22798 HWY 25 TIE IN PROPOSED 144 FIBER

MATCHLINE STA. 440

BEGIN FULL DEPTH RECONSTRUCTION

CROW WING COOPERATIVE

PLATTER RIVER

DVWY (B)

DVWY (G)

450

455

FOR UTILITY DESIGN MEETING AND UTILITY RELOCATION PLANS

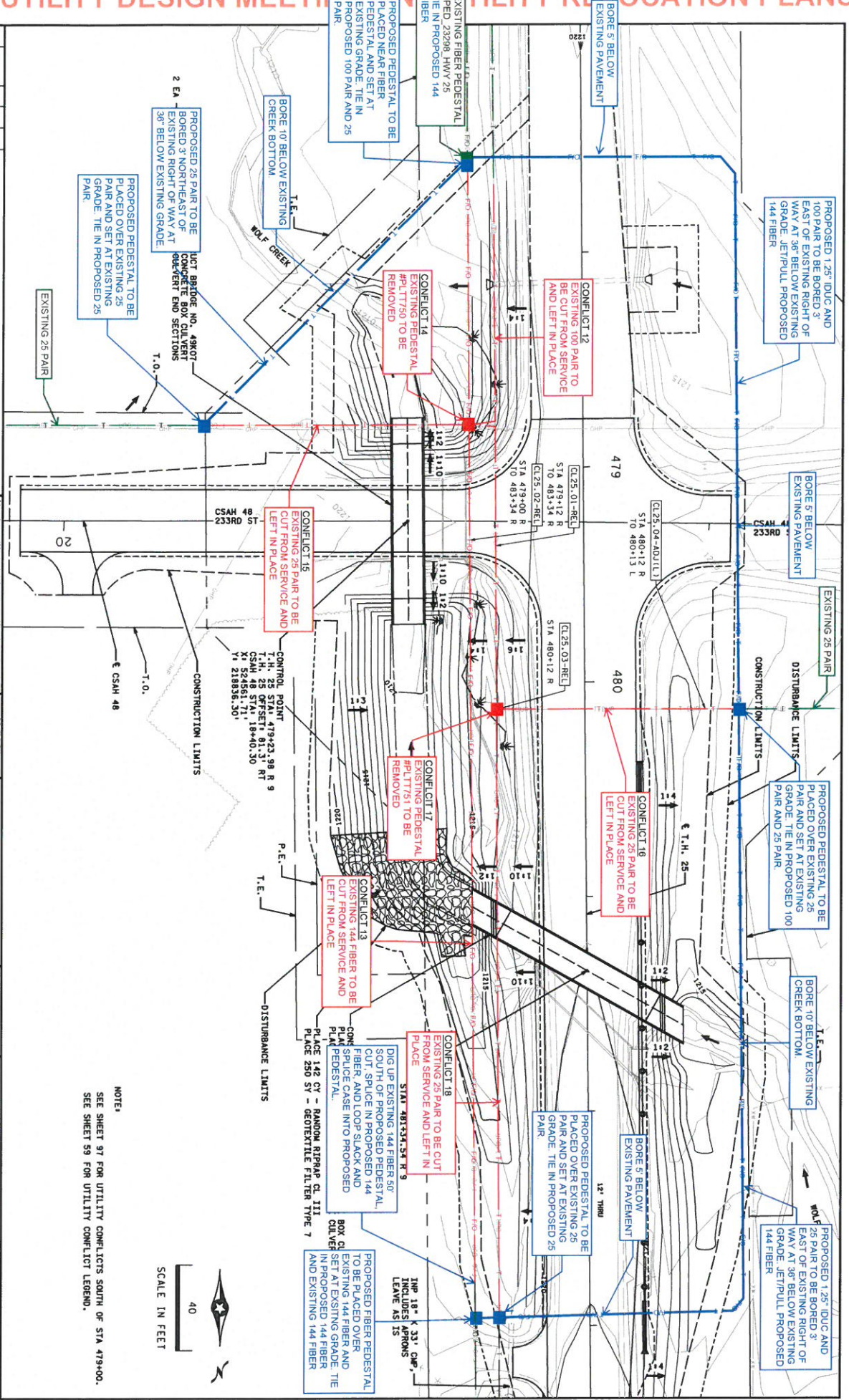
NO.	DATE	BY	CHKD	APP'D	REVISION
1	05/11/2022	RAAN	RAAN	RAAN	
2	05/11/2022	RAAN	RAAN	RAAN	
3	05/11/2022	RAAN	RAAN	RAAN	
4	05/11/2022	RAAN	RAAN	RAAN	
5	05/11/2022	RAAN	RAAN	RAAN	
6	05/11/2022	RAAN	RAAN	RAAN	
7	05/11/2022	RAAN	RAAN	RAAN	
8	05/11/2022	RAAN	RAAN	RAAN	
9	05/11/2022	RAAN	RAAN	RAAN	
10	05/11/2022	RAAN	RAAN	RAAN	
11	05/11/2022	RAAN	RAAN	RAAN	
12	05/11/2022	RAAN	RAAN	RAAN	
13	05/11/2022	RAAN	RAAN	RAAN	
14	05/11/2022	RAAN	RAAN	RAAN	
15	05/11/2022	RAAN	RAAN	RAAN	
16	05/11/2022	RAAN	RAAN	RAAN	
17	05/11/2022	RAAN	RAAN	RAAN	
18	05/11/2022	RAAN	RAAN	RAAN	
19	05/11/2022	RAAN	RAAN	RAAN	
20	05/11/2022	RAAN	RAAN	RAAN	

DATE: 05/11/2022
 BY: RAAN
 CHKD: RAAN
 APP'D: RAAN

PROJECT NO. 4911-15
 SHEET NO. 103 OF 130

MINNESOTA STATE
 PROJECT NO. 4911-15
 SHEET NO. 103 OF 130

MINNESOTA DEPARTMENT OF TRANSPORTATION
 SHEET 103 OF 130
 DRAINAGE PLANS & UTILITY CONFLICTS
 T.H. 25
 BRIDGE NO. 49Y13 & 49K07



NOTE:
 SEE SHEET 97 FOR UTILITY CONFLICTS SOUTH OF STA. 479+00.
 SEE SHEET 59 FOR UTILITY CONFLICT LEGEND.

