

CONSTRUCTION PROCEDURES

Install, Clean and Test; and Put in Service; Proposed new main per CenterPoint Energy Construction and Services Manual.

Procedure for tapping or making tie-ins to existing gas mains: Verify existing gas main size, type, and location prior to tapping or making tie-in. Monitor and verify, using a pressure gauge, existing gas main Pressure Class within the bell hole of tap location or tie-in location prior to tapping or making tie-in.

Purge new main until essentially 100% reading is obtained on Combustible Gas Indicator. See CenterPoint Energy Construction and Service Manual Section CS-B-1.230 for purging mains into service.

Complete all Service / Meter Work as directed. (See Service Survey)

See Abandonment Procedures for abandonment and purging procedures.

Install a marker ball at a new end of main, at a valve, at each ell of a horizontal offset, at road crossings and at any fitting or pressure control identified as needing to be located in the future. Refer to CenterPoint Energy Construction and Service Manual section CS-B-1.310 for installation procedures.

CONSTRUCTION NOTES

Obtain Construction Plans from Designer prior to starting job.

Coordinate with Contractor / Engineering Firm for exact locations of proposed structures and facilities prior to installation of gas facilities.

Install new main as shown or as directed in field at time of installation. Contact Engineering for approval of field generated changes.

Long side mains and services to be installed below proposed sub-cuts (See Construction Plans).

All test points should be installed in the boulevard or other acceptable locations and avoid placement in driving lanes.

Verify Coating test results if required prior to abandoning main.

ABANDONMENT PROCEDURES

See Construction Procedures for installation of mains and services prior to abandonments.

▲ This project includes work on one-way feed mains.
▲ Ensure all proposed main is in service, all taps are completed and all services have been transferred to new main prior to abandonments.

Cut and Abandon existing main as shown. Purge abandoned mains until essentially 0% gas reading is obtained on Combustible Gas Indicator. See CenterPoint Energy Construction and Service Manual Section CS-B-1.110 and Section CS-B-1.230 for purging mains out of service using air movers.

Contact Engineering with questions.

When butt fusing to existing in-service polyethylene, visually inspect for the presence of hydrocarbon permeation immediately after removing fusion iron. If any bubbling is identified on the heated surface, do not join to new PE pipe. Allow to cool and cut this end off (12" length) and send to the Golden Valley Lab with street location and W.O. #. Complete tie-in/extension using an electrofusion coupling(s).

Document in field notes.

NOTE: BORE ALL PAVED STREETS AND DRIVEWAYS

Minimum depth requirements for crossings of state highways and county roads is 60". Minimum depth requirements for crossings of city streets and township roads is 48". Minimum depth for parallel installations on state highways and county roads is 36". Minimum depth for parallel installations on city streets and township roads is 30". All steel pipe welds to be coated with 2 part epoxy.

Pipe < 4-inches Diameter (Unregulated PCB area):
Project area cleared for internal impacts. Pipe being removed is unregulated for disposal if coating does not exist or is non-asbestos. Refer to CNP Construction and Service Manual CS-B-1.110, CS-B-1.330, and CS-B-1.100, for pipe to be abandoned.

ⓐ DENOTES COATING SAMPLE LOCATION. CONTACT MADDIE NIERENGARTEN (612-321-5469) IN THE ENVIRONMENTAL DEPARTMENT TO SCHEDULE SAMPLING OF PIPE COATING. GIVE 48 HOURS NOTICE WHEN POSSIBLE TO ARRANGE FOR A LICENSED INSPECTOR.

LOCATION MAP

NO SCALE

SHEET 3

SHEET 2



MINNESOTA REGION

PROPRIETARY AND CONFIDENTIAL

PROJECT #: 102446150

M16100 GENOLA
M15900 PIERZ TOWNSHIP
M16200 PIERZ
ONE CALL:
Morrison
*SW17 T40/R30
*SE18 T40/R30
*SW5 T40/R30
*NE19 T40/R30
*NW20 T40/R30
*NW17 T40/R30
* = this Page

LEGEND:
— ACTIVE MAIN
— DESIGNED MAIN
- - - PROPOSED/ABANDONED/
OUT OF SERVICE MAIN
- - - ABANDONED/
OUT OF SERVICE MAIN

PIPE REQUIRED:
5014' 4" PE CL-6
35' 2" PE CL-6
38' 6" PE CL-6
5087' PIPE

PROPOSED ABANDONED PIPE:
4124' 3" TR CL-6
218' 4" TR CL-6
4553' 2" STL CL-6
145' 2" AA CL-6
59' 3" STL CL-6
5' 2" TR CL-6
9104' PIPE

COPIES:
PIPELINE INTEGRITY PACKET: N
STATION MANAGER: N
DD NUMBER: N/A
CORROSION: ANDREW KLEVE
EMP: 15741977

SITE CONTACT: MIKE ZMUDA
ISTHMUS ENGINEERING
MZMUDA@ISTHMUSENGINEERING.COM
612-979-6326

SURVEYOR REQUIRED? N

RETURN PACKET TO ENG? N

JOB BRIEFING REQUIRED? Y

GFIP #: N/A

PERMITS: GENOLA NOTIFICATION
MORRISON COUNTY
MNDOT
PIERZ TWP NOTIFICATION
PIERZ

CORROSION TECH FOR AREA IS:
ANDREW KLEVE, CELL 612-441-1213

CP TEST POINT WITH ANODE
AND PLASTIC PIPE LOCATING STATION
ROADWAY INSTALLATION

LOCATING/TRACER WIRE — PIPES

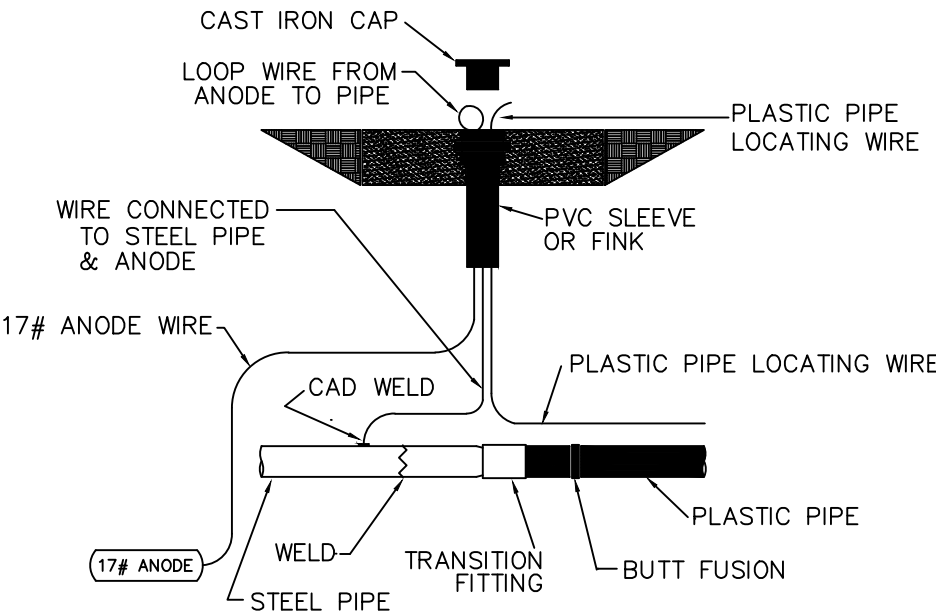
Solid 12 THHN copper tracer wire shall be buried with all plastic pipes.

NOTE: Whenever tracer wires are joined together or connected to plastic pipes or services, the connections shall be coated with moldable sealant/tape.

Tracer wire shall also be terminated with plastic pipes when inserting inside

Where steel pipes and plastic pipe are joined together, the tracer wire will be terminated in a test box as shown in the drawing below. A separate 12 THHN copper wire will be connected to the steel pipe and also terminated in the same test box with the tracer wire.

NOTE:
1. Install roadway cap at final grade.
2. Allow a minimum of 10" of slack in test wires.



I hereby certify that this plan, specification, or report was prepared by me or under my direct supervision and that I am a duly Licensed Professional Engineer under the laws of the state of Minnesota.

Signature: Eric Yang

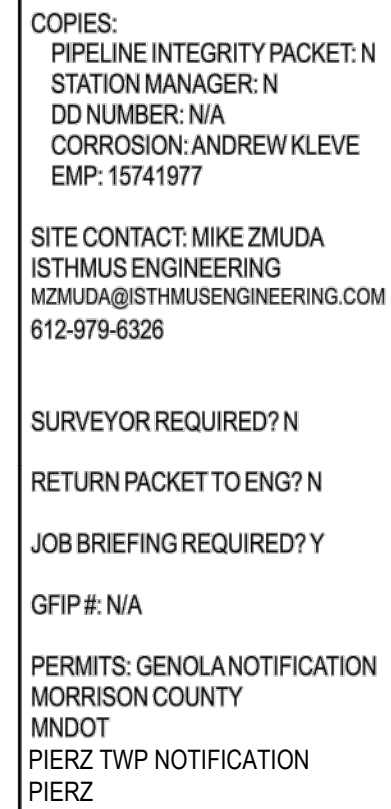
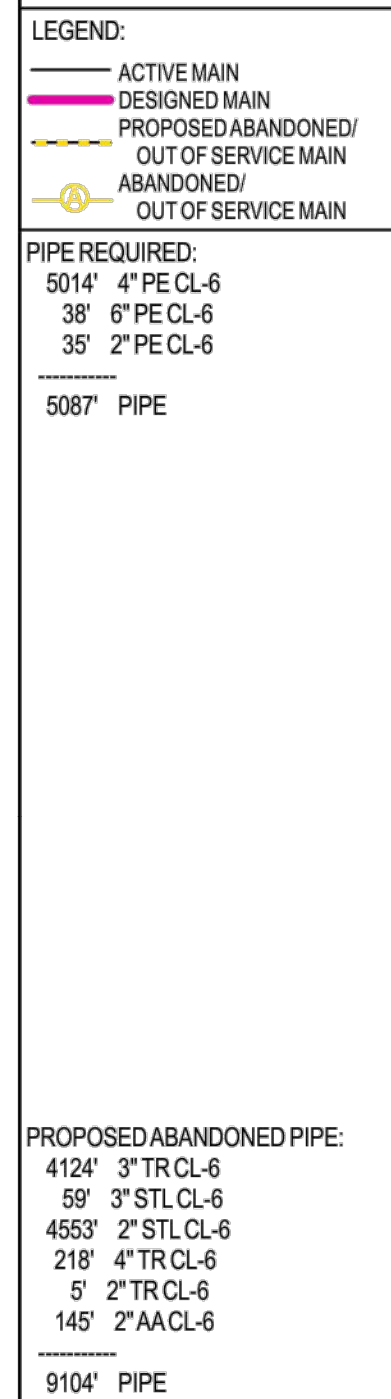
Typed or Printed Name: Eric Yang

Date: 9/22/2022 License Number: 56613

Main
SSR 200-2022

SCALE 1" = 200'
SHEET 1 OF 3

SHEET 3
1 INCH = 100 FEET



Signature: Eric Yang
Typed or Printed Name: Eric Yang
Date: 9/22/2022 License Number: 56613

PROJECT DESCRIPTION: SREL HWY 25 - GENOLA	
DESIGNER: Maura Klimisch PHONE #: 612-321-5319 DRAWN BY: Michelle Bramsen DESIGN DATE: 5/11/2022	
REVISION INFO:	
Main SS# 200-2022	SCALE 1" = 100' SHEET 3 OF 3