

1
Ext 1036 4/0 ACSR
Ext 1 40-4 CEDAR
Ext 1 C5.71L.8H
Ext 4 E1
Ext 1 H1.1
New 3 L1.5
New 1 L2.5
Ret 1 L1.5
Ret 1 L2.5
Ret 1 R1.2

2.1
Ret 1 35-5
Ret 548 4 ACSR
Ret 1 A1.1

2
New 1300 4 ACSR
New 1 45-4
New 1 C1.11
New 1 H1.1

3.1
Ret 1 35-5
Ret 546 4 ACSR
Ret 1 A1.1

3
New 1300 4 ACSR
New 1 45-4
New 1 C1.11
New 1 H1.1

4.1
Ret 1 35-5
Ret 754 4 ACSR
Ret 1 A1.1
Ret 1 H1.1

4
New 1300 4 ACSR
New 1 40-5
New 1 C1.11
New 1 H1.1

5.1
Ret 1 35-6
Ret 748 4 ACSR
Ret 1 A1.1

5
New 1300 4 ACSR
New 1 40-5
New 1 C1.11
New 1 H1.1

295th Ave

213th St

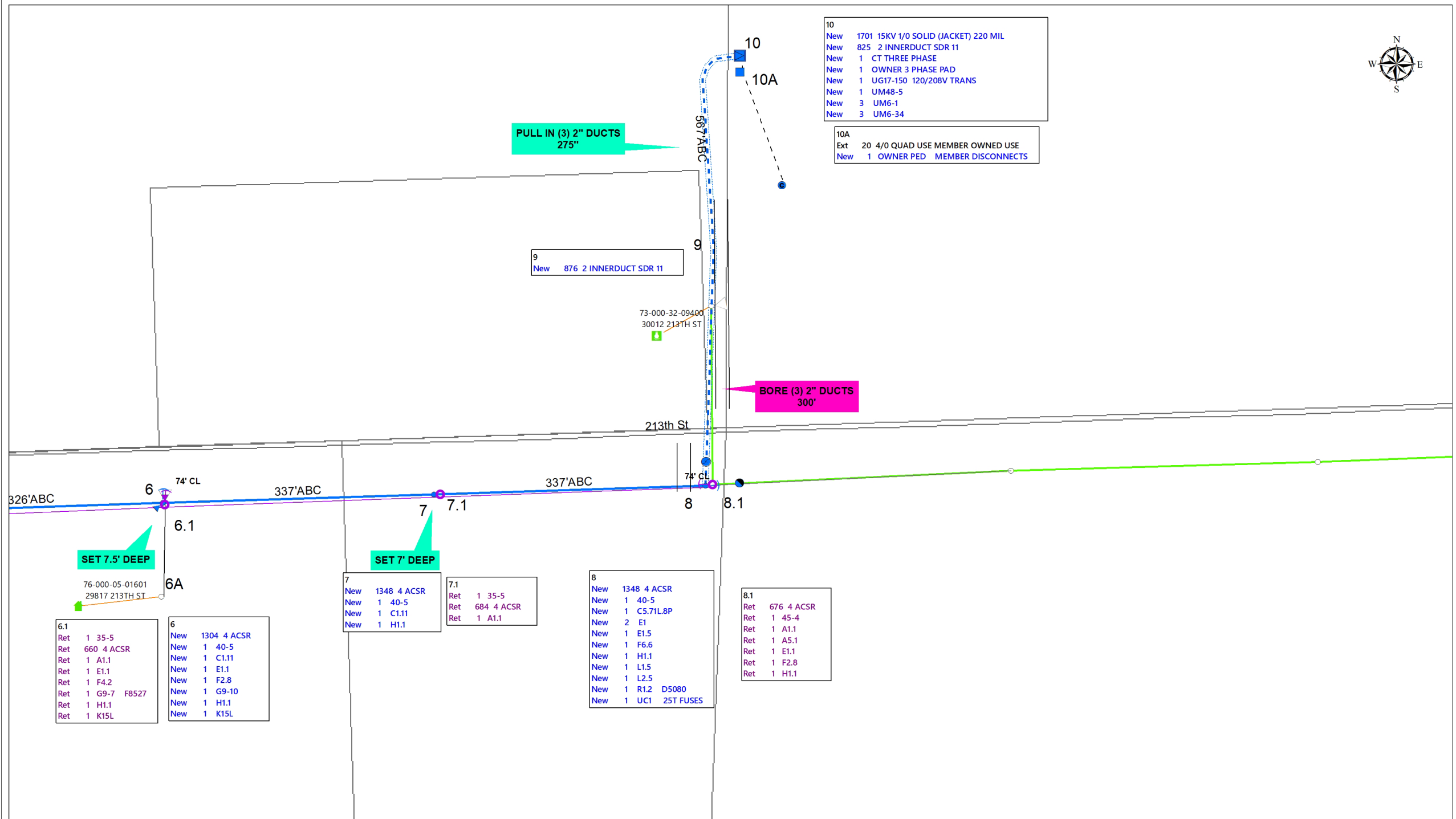
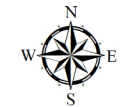
74' CL

325' ABC

325' ABC

325' ABC

325' ABC



10
New 1701 15KV 1/0 SOLID (JACKET) 220 MIL
New 825 2 INNERDUCT SDR 11
New 1 CT THREE PHASE
New 1 OWNER 3 PHASE PAD
New 1 UG17-150 120/208V TRANS
New 1 UM48-5
New 3 UM6-1
New 3 UM6-34

10A
Ext 20 4/0 QUAD USE MEMBER OWNED USE
New 1 OWNER PED MEMBER DISCONNECTS

PULL IN (3) 2" DUCTS 275"

BORE (3) 2" DUCTS 300'

9
New 876 2 INNERDUCT SDR 11

73-000-32-09400
30012 213TH ST

326'ABC 6 74' CL 337'ABC 7 7.1 337'ABC 8 74' CL 8.1

SET 7.5' DEEP

SET 7' DEEP

76-000-05-01601
29817 213TH ST

6.1
Ret 1 35-5
Ret 660 4 ACSR
Ret 1 A1.1
Ret 1 E1.1
Ret 1 F4.2
Ret 1 G9-7 F8527
Ret 1 H1.1
Ret 1 K15L

6
New 1304 4 ACSR
New 1 40-5
New 1 C1.11
New 1 E1.1
New 1 F2.8
New 1 G9-10
New 1 H1.1
New 1 K15L

7
New 1348 4 ACSR
New 1 40-5
New 1 C1.11
New 1 H1.1

7.1
Ret 1 35-5
Ret 684 4 ACSR
Ret 1 A1.1

8
New 1348 4 ACSR
New 1 40-5
New 1 C5.71L8P
New 2 E1
New 1 E1.5
New 1 F6.6
New 1 H1.1
New 1 L1.5
New 1 L2.5
New 1 R1.2 D5080
New 1 UC1 25T FUSES

8.1
Ret 676 4 ACSR
Ret 1 45-4
Ret 1 A1.1
Ret 1 A5.1
Ret 1 E1.1
Ret 1 F2.8
Ret 1 H1.1