

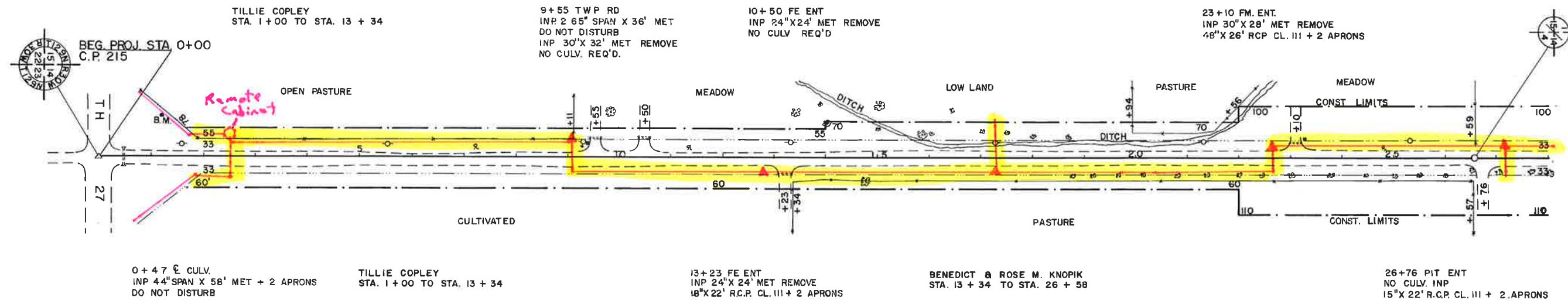
POT 0+00

P.I - 26 + 58.1  
Δ - 0° 05' 30" LT

BASIC WIDTH OF RIGHT OF WAY IS 66 FT.  
ALL RIGHT OF WAY OUTSIDE OF 66 FT.  
IS COVERED BY SLOPE EASEMENT

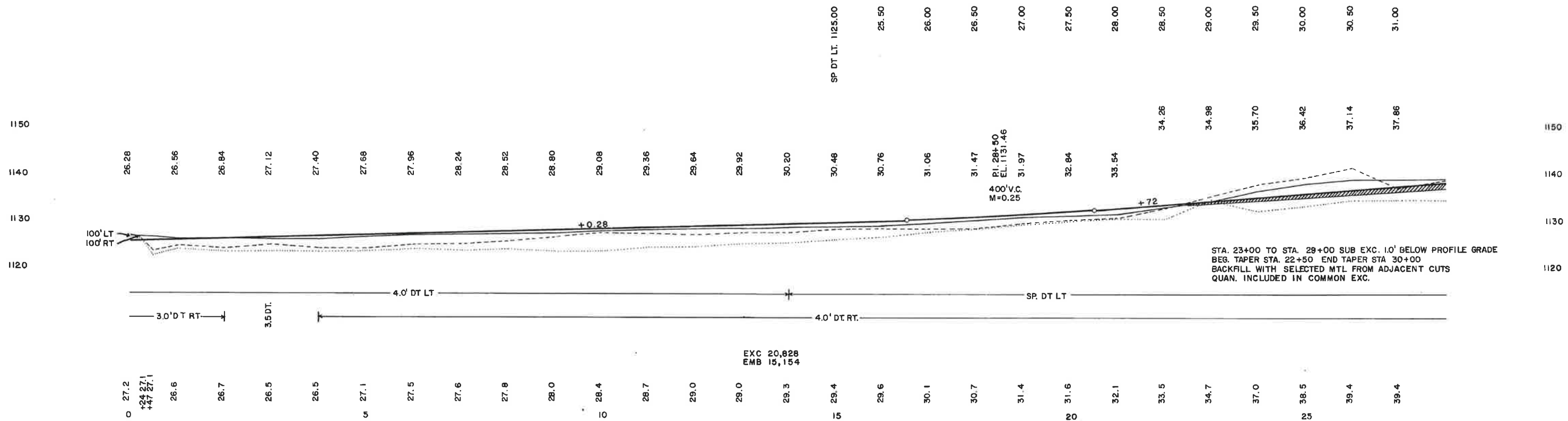
CARL J. & ELLEN O. JOHNSON  
STA. 13 + 34 TO STA. 19 + 94

OSCAR L. & CARL E. BENSON  
STA. 19 + 94 TO STA. 26 + 58



BM EL. 1124.76 TOP OF DISC IN CONC MON  
STATE BM NO 4904  
LT 80' STA 1+19

CL & GR 0.15 AC & GR 0.05 AC & CL & GR. 1 TR.  
CL & GR 2 TREES | GR. 1 TR. | CL & GR 0.05 ACRES & CL. & GR. 3 TRS.  
B.M. EL. 1133.25  
SPK IN 18" W. OAK  
LT 157' STA 21+86



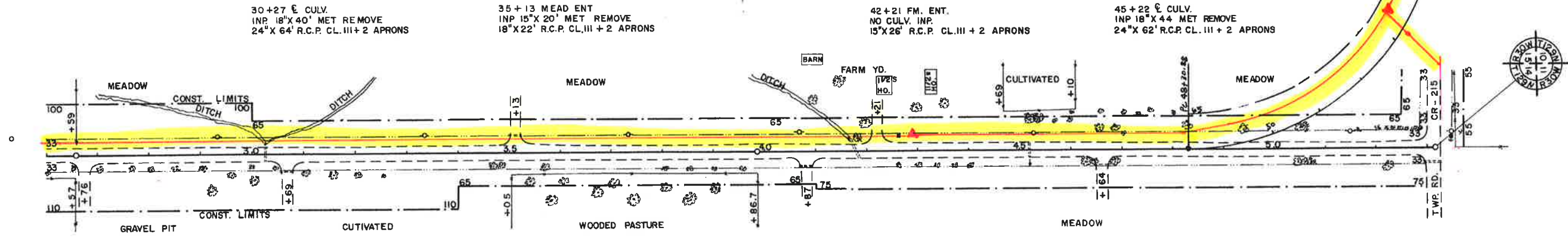
EXC 20,828  
EMB 15,154

BASIC WIDTH OF RIGHT OF WAY IS 66 FT.  
ALL RIGHT OF WAY OUTSIDE 66 FT  
IS COVERED BY SLOPE EASEMENT.

P.I. - 39 + 86.7  
 $\Delta = 0^\circ 21' \text{ LT.}$

MARION E. & NEIL A. OLSON  
STA. 26 + 58 TO STA. 66 + 33

P.I. - 53 + 17.5  
 $\Delta = 87^\circ 23' 30'' \text{ LT.}$   
D.C. 11' 15"  
T 484.62  
L 776.81  
E 195.11  
R 509.29



30+27 CULV.  
INP 18"X40' MET REMOVE  
24"X64' R.C.P. CL.III+2 APRONS

35+13 MEAD ENT  
INP 15"X20' MET REMOVE  
18"X22' R.C.P. CL.III+2 APRONS

42+21 FM. ENT.  
NO CULV. INP.  
15"X26' R.C.P. CL.III+2 APRONS

45+22 CULV.  
INP 18"X44' MET REMOVE  
24"X62' R.C.P. CL.III+2 APRONS

30+69 PIT ENT  
INP 18"X23' MET REMOVE  
18"X22' R.C.P. CL.III+2 APRONS

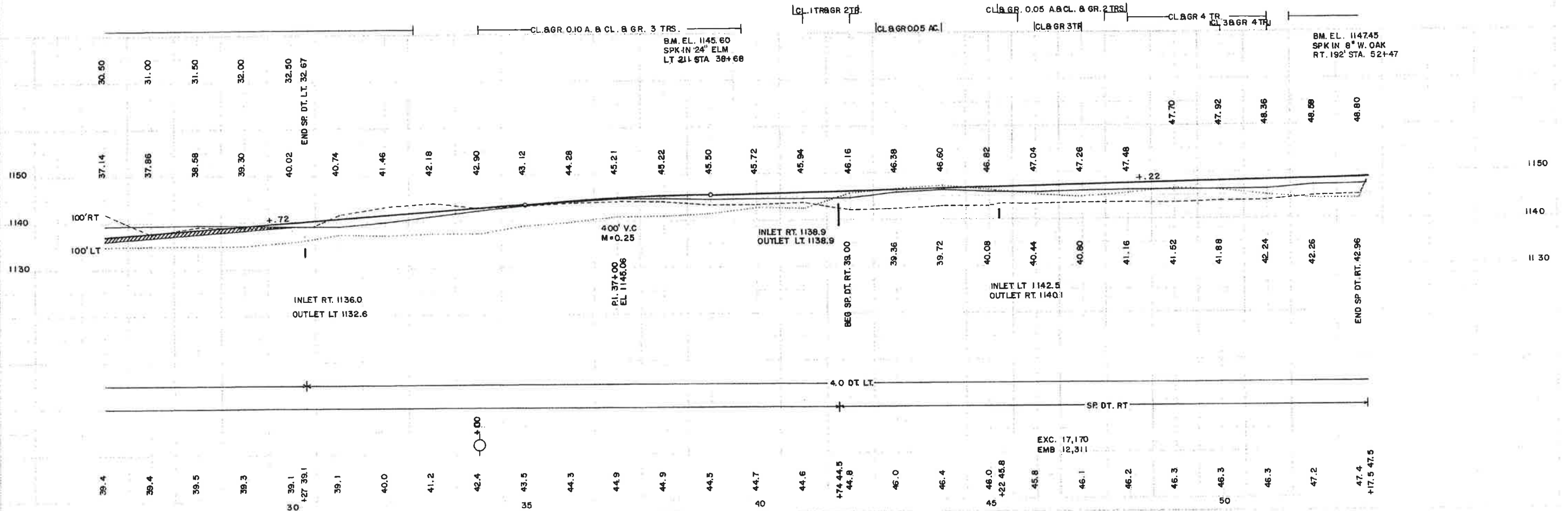
MARION E. & NEIL A. OLSON  
STA. 26 + 58 TO STA. 52 + 84

39+87 FE & PAST ENT.  
INP 12"X36' MET REMOVE  
18"X26' R.C.P. CL.III+2 APRONS

41+74 CULV.  
INP 48"X30' R.C.P. REMOVE  
48"X86' R.C.P. CL.III+2 APRONS (SKEW)

46+64 MEAD ENT.  
INP 24"X20' MET REMOVE  
36"X22' RCP CL.III+2 APRONS

53+17.5 TWP RD.  
INP 24"X40' MET REMOVE  
36"X40' R.C.P. CL.III+2 APRONS



BASIC WIDTH OF RIGHT OF WAY IS 66 FT.  
ALL RIGHT OF WAY OUTSIDE 66 FT  
IS COVERED BY SLOPE EASEMENT.

P.O.T. 66+33.4



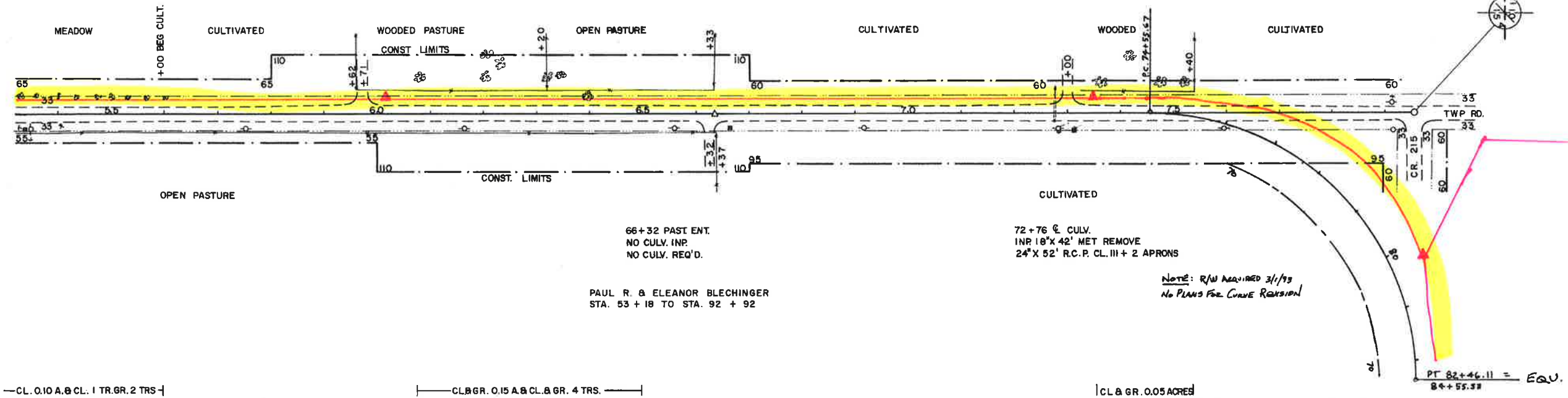
P.I. 79+55.5  
Δ = 88° 55' 30" RT.  
D<sub>c</sub> 11° 15'  
T 499.83  
L 790.44  
E 204.29  
R 509.29

59+71 PAST. ENT  
NO CULV. INP  
15" X 22' R.C.P. CL. III + 2 APRONS

JOSEPH E. & ANNETTE M. ZIMMERMAN  
STA. 66+33 TO STA. 79+06

73+00 FM ENT.  
NO CULV. INP.  
15" X 26' R.C.P. CL. III + 2 APRONS

79+55.5 TWP RD  
NO CULV. INP.  
NO CULV. REQ'D.



66+32 PAST. ENT.  
NO CULV. INP.  
NO CULV. REQ'D.  
PAUL R. & ELEANOR BLECHINGER  
STA. 53+18 TO STA. 92+92

72+76 C. CULV.  
INP 18" X 42" MET REMOVE  
24" X 52" R.C.P. CL. III + 2 APRONS

NOTE: R/W ACQUIRED 3/1/93  
NO PLANS FOR CURVE REVISION

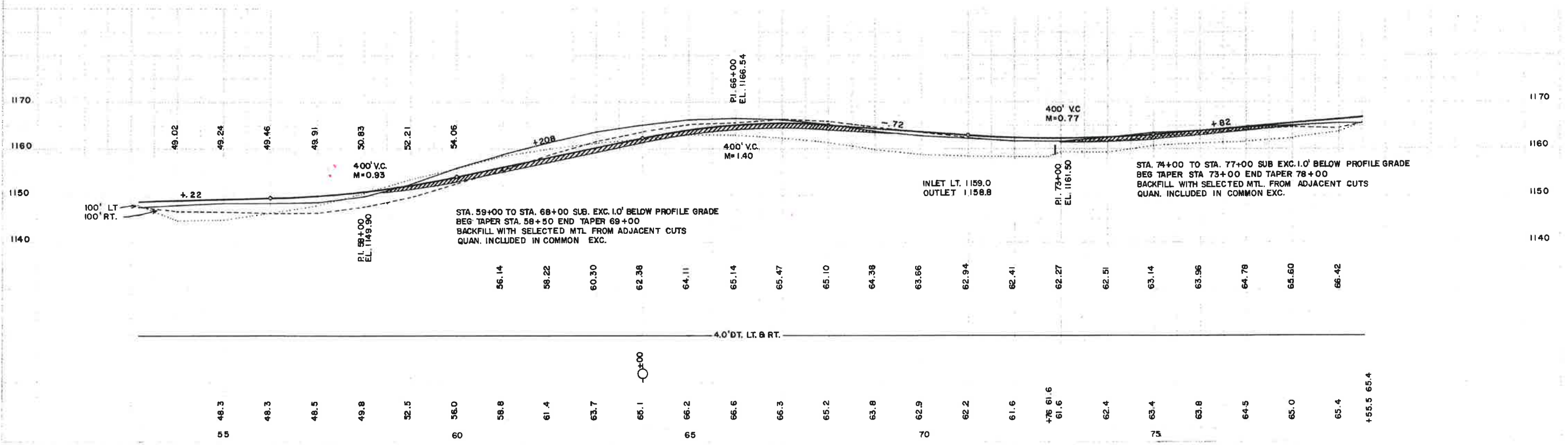
PT 82+46.11 = E.O.V.  
84+55.33

CL. 0.10 A. & CL. 1 TR. GR. 2 TRS

CL. B GR. 0.15 A. & CL. B GR. 4 TRS.

CL. B GR. 0.05 ACRES

B.M. EL. 1161.80  
SPK. IN 15" W. OAK  
LT. 125' STA. 75+40



STA. 59+00 TO STA. 68+00 SUB. EXC. 1.0' BELOW PROFILE GRADE  
BEG TAPER STA. 58+50 END TAPER 69+00  
BACKFILL WITH SELECTED MTL FROM ADJACENT CUTS  
QUAN. INCLUDED IN COMMON EXC.

STA. 74+00 TO STA. 77+00 SUB EXC. 1.0' BELOW PROFILE GRADE  
BEG TAPER STA. 73+00 END TAPER 78+00  
BACKFILL WITH SELECTED MTL. FROM ADJACENT CUTS  
QUAN. INCLUDED IN COMMON EXC.

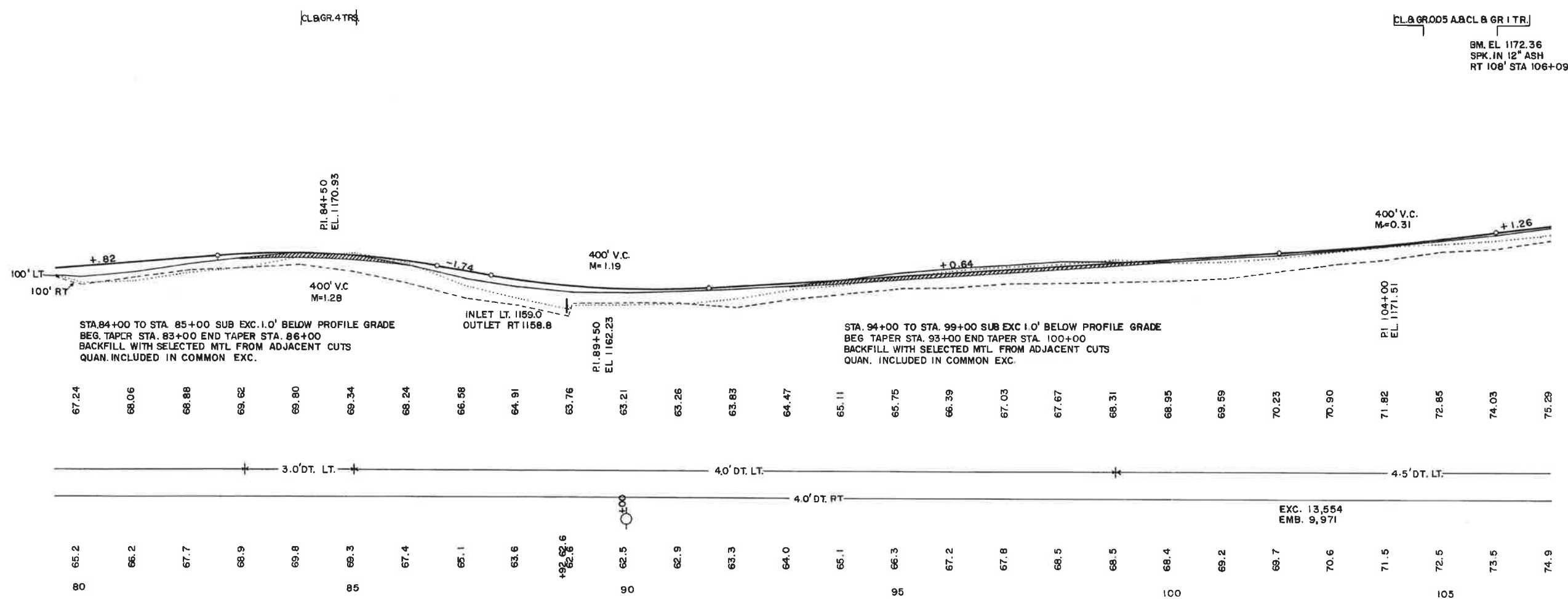
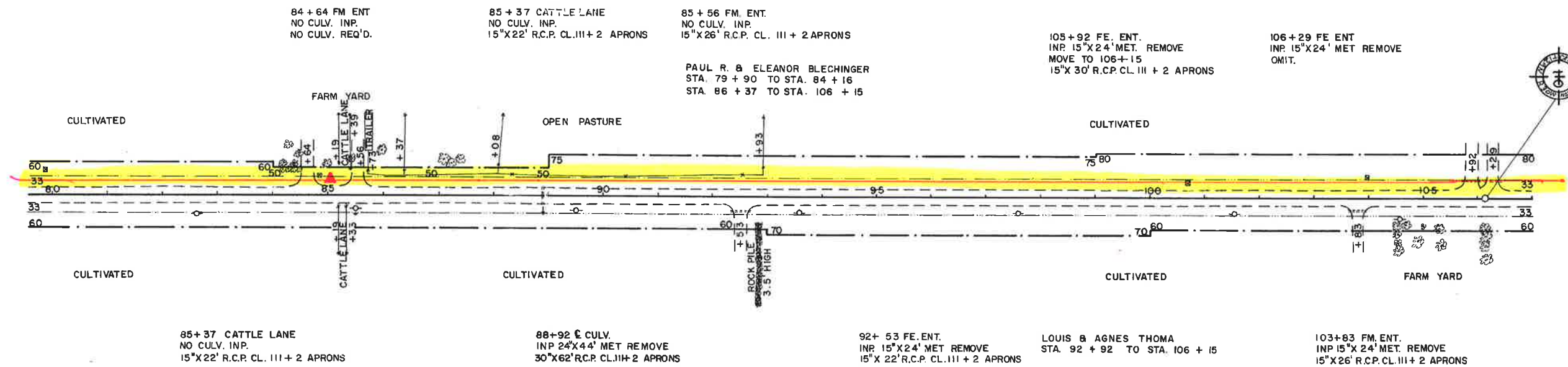
INLET LT. 1159.0  
OUTLET 1158.8

PI. 79+00  
EL. 1161.90

4.0' DT. LT. & RT.

BASIC WIDTH OF RIGHT OF WAY IS 66 FT.  
ALL RIGHT OF WAY OUTSIDE 66 FT.  
IS COVERED BY SLOPE EASEMENT

P.I. = 106+15.3  
 $\Delta = 0^\circ 13' \text{ LT.}$





POT 132 + 76.4

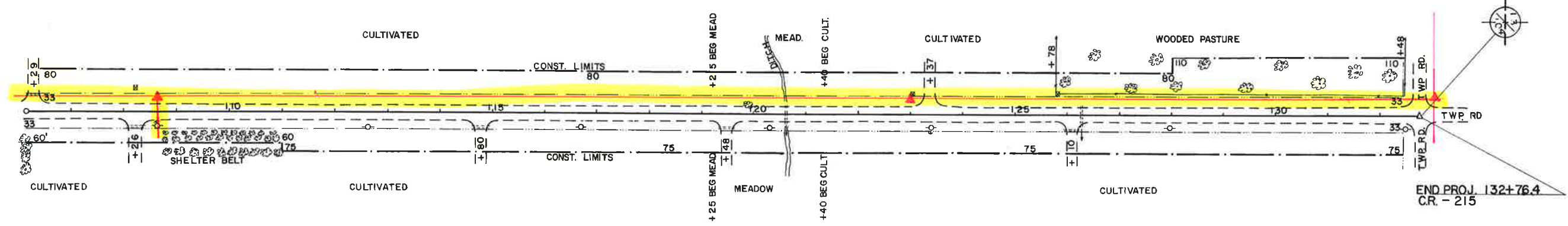
BASIC WIDTH OF RIGHT OF WAY IS 66 FT.  
ALL RIGHT OF WAY OUTSIDE 66 FT.  
IS COVERED BY SLOPE EASEMENT.

ALBERT & AGNES THOMA  
STA. 106 + 15 TO STA. 132 + 76

120+65 CULV.  
INP 56' SPAN X 44' MET REMOVE  
48' X 48' R.C.P. CL. 111 + 2 APRONS

123+37 FM. ENT.  
NO CULV. INP.  
15' X 26' R.C.P. CL. 111 + 2 APRONS

132 + 76.4 TWP. RD.  
NO CULV. INP.  
NO CULV. REQ'D.



END PROJ. 132+76.4  
C.R. - 215

108+26 FM ENT  
INP 15' X 30' MET REMOVE  
15' X 26' R.C.P. CL. 111 + 2 APRONS

114 + 80 FE. ENT.  
INP 15' X 24' MET REMOVE  
15' X 22' R.C.P. CL. 111 + 2 APRONS

119 + 48 MEAD ENT.  
INP 15' X 24' MET. REMOVE  
18' X 22' R.C.P. CL. 111 + 2 APRONS

126 + 10 FE. ENT.  
INP 18' X 24' MET REMOVE  
NO CULV. REQ'D.

126 + 27 CULV  
INP 18' X 47' MET REMOVE  
24' X 54' R.C.P. CL. 111 + 2 APRONS

132 + 76.4 TWP. RD.  
NO CULV. INP.  
NO CULV. REQ'D.

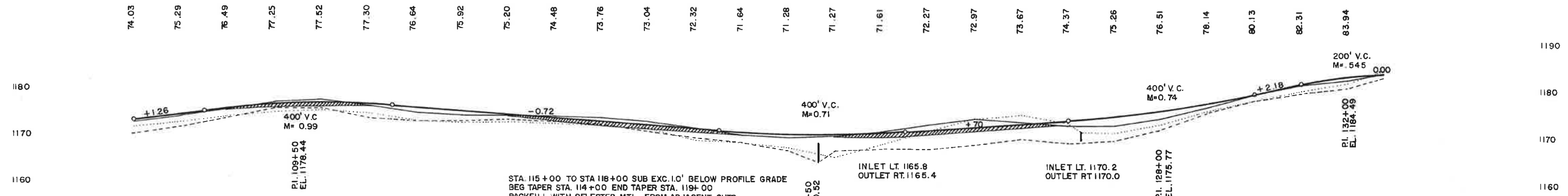
FRED J. & DELORES THOMA  
STA. 106 + 15 TO STA. 119 + 45

ALBERT & AGNES THOMA  
STA. 119 + 45 TO STA. 132 + 76

CL. & GR. 1 TR.

CL. & GR. 0.75 ACRES

BM EL. 1182.90  
SPK IN 28' W. OAK  
LT 106' STA. 131 + 63



STA. 109+00 TO STA. 110+00 SUB EXC. 1.0' BELOW PROFILE GRADE  
BEG TAPER STA. 109+00 END TAPER STA. 111+00  
BACKFILL WITH SELECTED MTL. FROM ADJACENT CUTS  
QUAN INCLUDED IN COMMON EXC.

STA. 115+00 TO STA. 118+00 SUB EXC. 1.0' BELOW PROFILE GRADE  
BEG TAPER STA. 114+00 END TAPER STA. 119+00  
BACKFILL WITH SELECTED MTL. FROM ADJACENT CUTS  
QUAN INCLUDED IN COMMON EXC.

STA. 122+00 TO STA. 125+00 SUB EXC. 1.0' BELOW PROFILE GRADE  
BEG TAPER STA. 121+00 END TAPER STA. 125+70  
BACKFILL WITH SELECTED MTL. FROM ADJACENT CUTS  
QUAN INCLUDED IN COMMON EXC.

