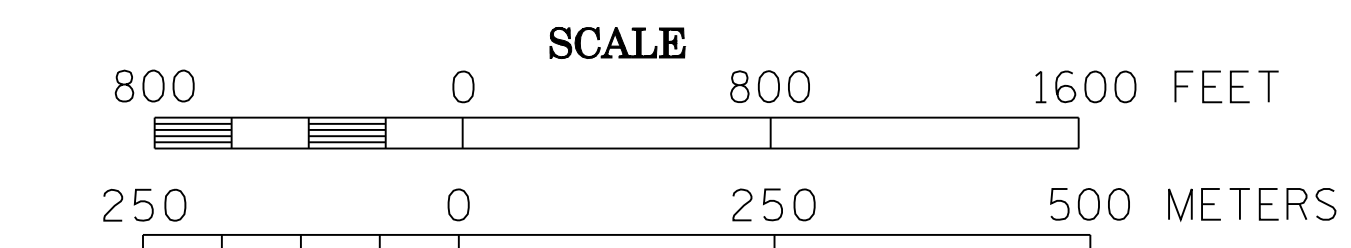


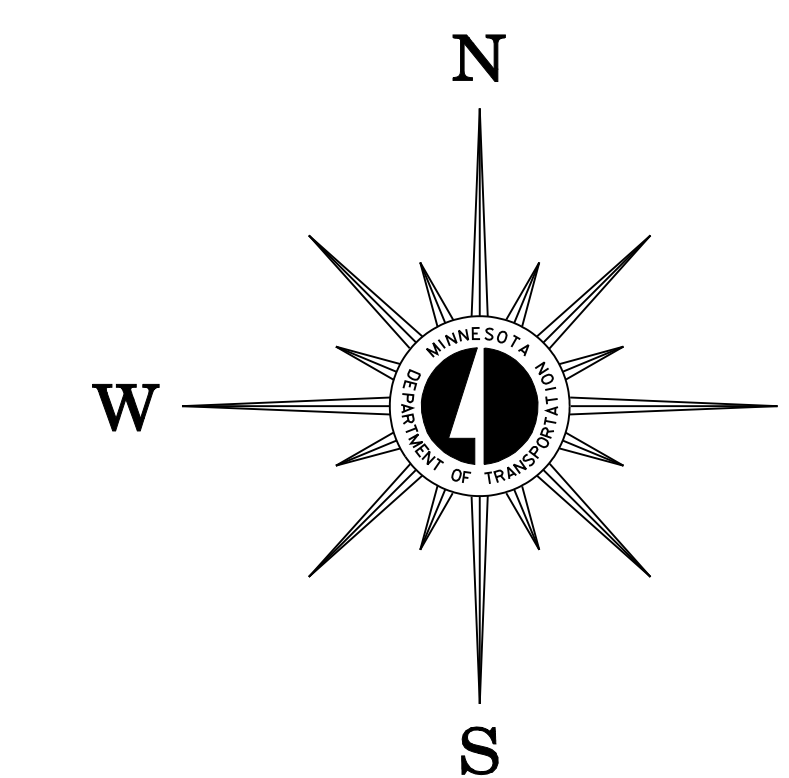
# 2005 TRAFFIC VOLUMES

## MUNICIPALITIES OF MORRISON CO.

PREPARED BY THE  
 MINNESOTA DEPARTMENT OF TRANSPORTATION  
 OFFICE OF TRANSPORTATION DATA & ANALYSIS  
 IN COOPERATION WITH  
 U.S. DEPARTMENT OF TRANSPORTATION  
 FEDERAL HIGHWAY ADMINISTRATION

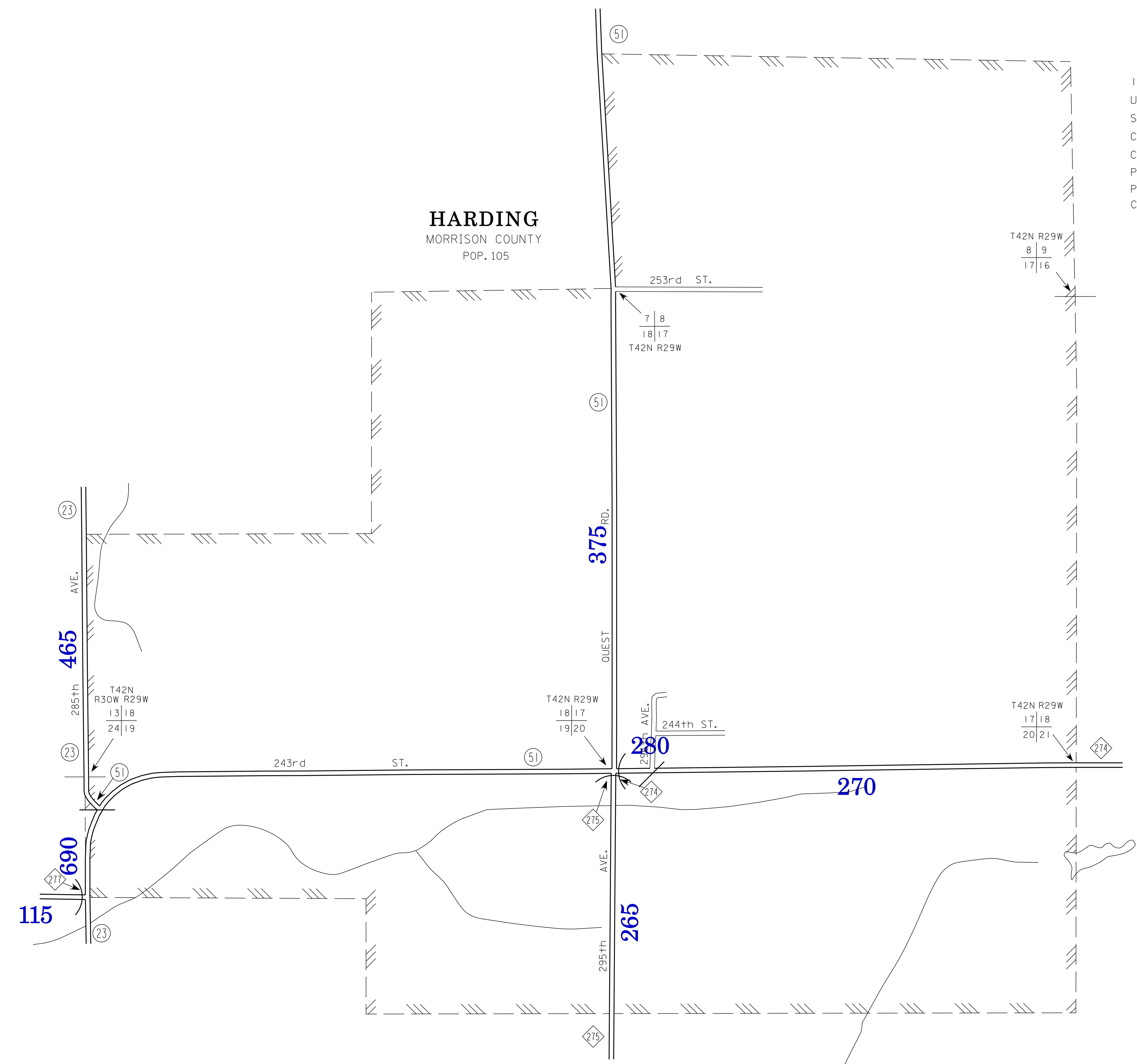
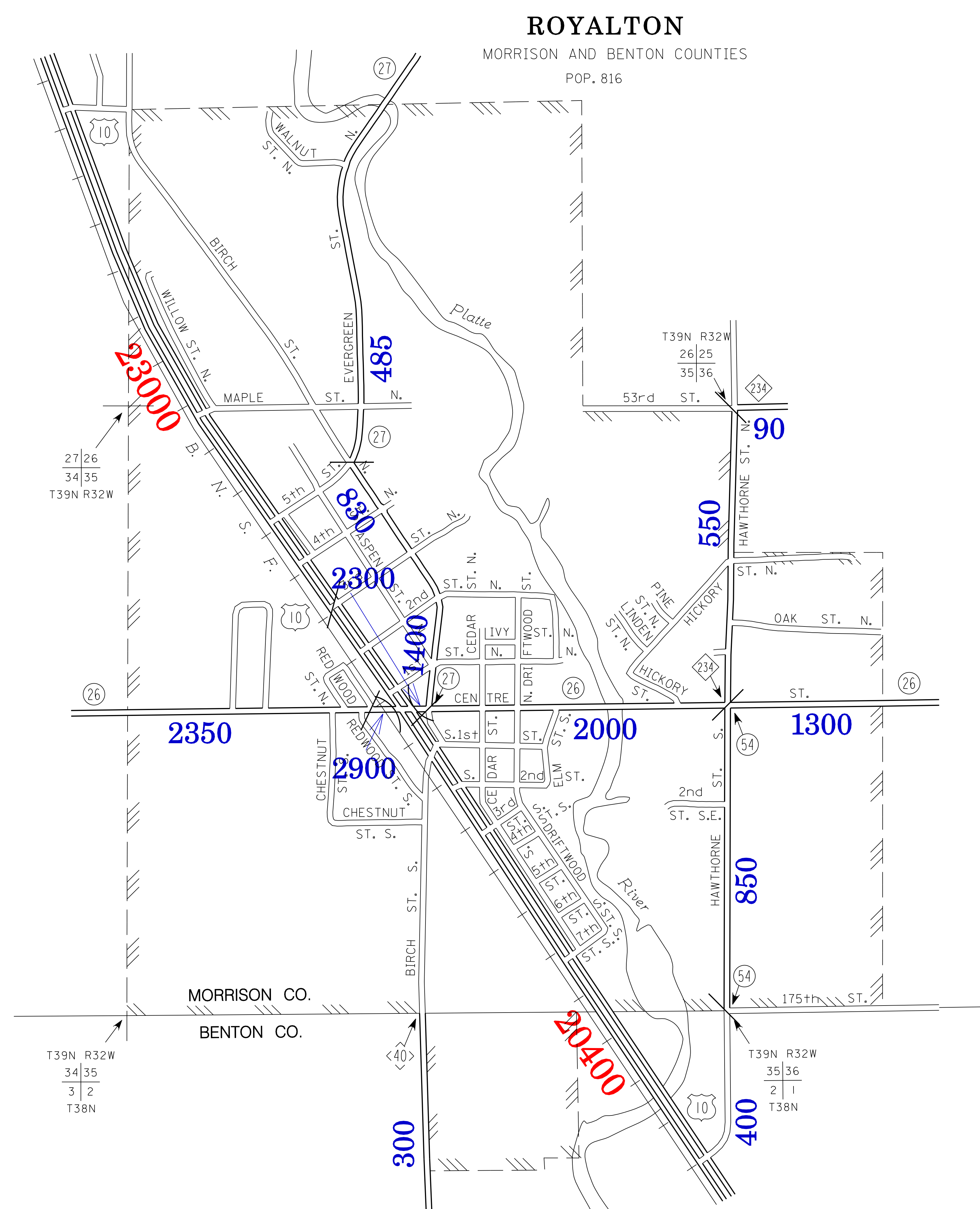


2005  
 BASIC DATA - 1977



### LEGEND

- INTERSTATE TRUNK HIGHWAY..... (I-95)
- U.S. TRUNK HIGHWAY..... (10)
- STATE TRUNK HIGHWAY..... (55)
- COUNTY STATE AID HIGHWAY..... (2)
- COUNTY ROAD..... (23)
- PUBLIC ROAD.....
- PRIVATE ROAD.....
- CORPORATE LIMITS.....



VOLUMES PREPARED BY  
 THE OFFICE OF  
 TRANSPORTATION DATA & ANALYSIS

NUMERALS INDICATE AVERAGE DAILY  
 TRAFFIC VOLUMES ON DESIGNATED ROADS.

TRUNK HIGHWAY ROUTES ARE 2004 A.A.D.T. VOLUMES.  
 COUNTY SYSTEM ROADS ARE 2005 A.A.D.T. VOLUMES.

FOR DESIGNATED ROADS :  
 / = SEGMENT ENDPOINT FOR ALL  
 ROADS INTERSECTED BY HATCH  
 ( = SEGMENT ENDPOINT ONLY FOR  
 ROAD SEPARATED FROM INTERSECTING  
 ROAD BY ARC

MUNICIPALITIES SHOWN  
 ON THIS SHEET  
 HARDING  
 ROYALTON

NOTE: 2000 U.S. CENSUS FIGURES SHOWN FOR ALL MUNICIPALITIES UNLESS OTHERWISE STATED.