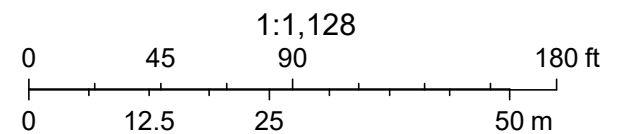


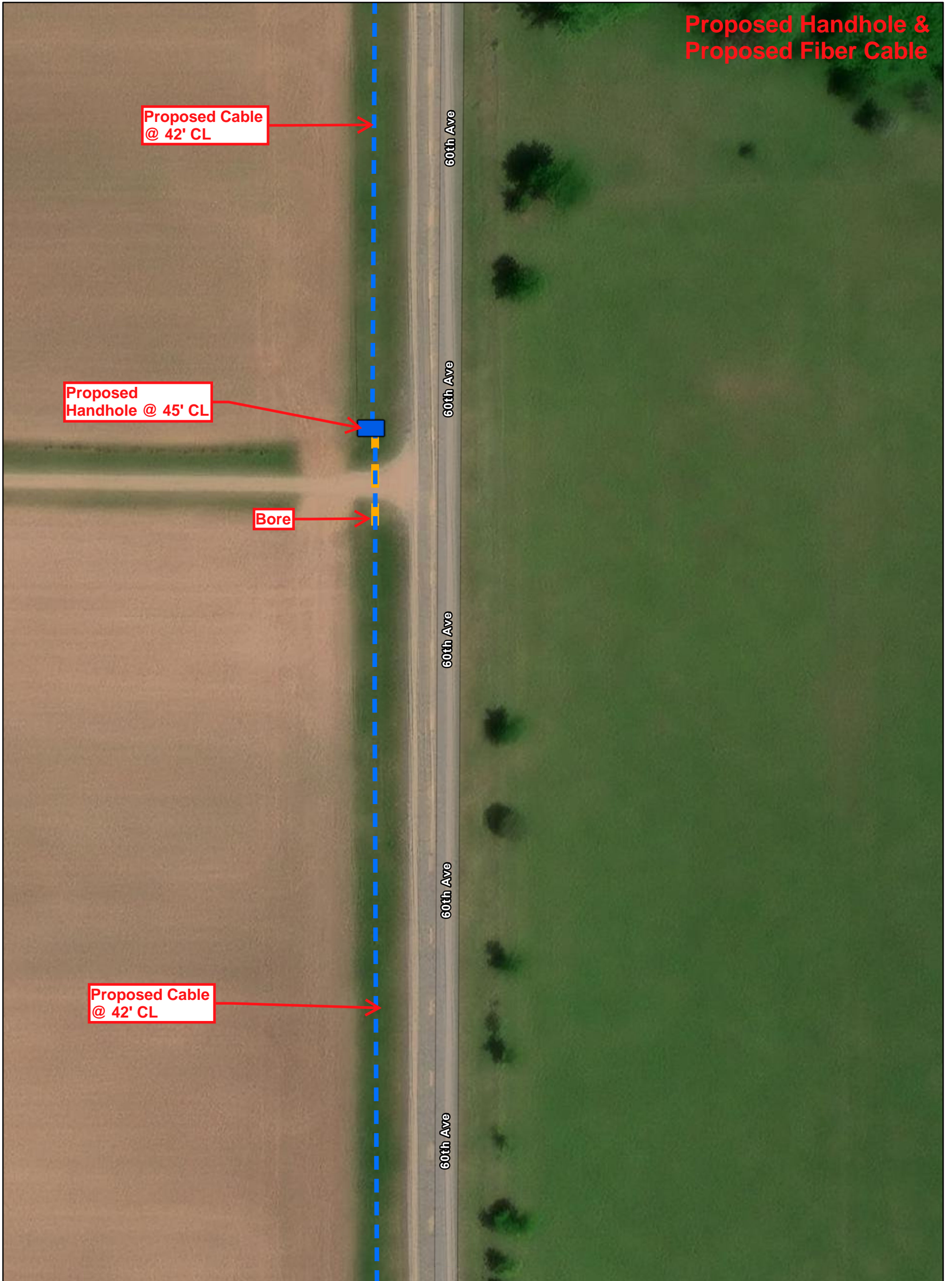
8/29/2024, 5:30:29 PM

Customer Location Network Cable

- P Potential
- Proposed Handhole
- Proposed Conduit
- Exchange Boundary
- UG Network - Proposed



Esri Community Maps Contributors, © OpenStreetMap, Microsoft, Esri, TomTom, Garmin, SafeGraph, GeoTechnologies, Inc, METI/ NASA, USGS, EPA, NPS, US Census Bureau, USDA, USFWS Maxar



8/29/2024, 5:31:59 PM

Handhole

Proposed

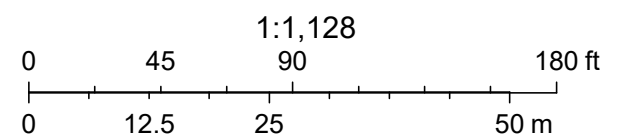
Network Cable

UG Network - Proposed

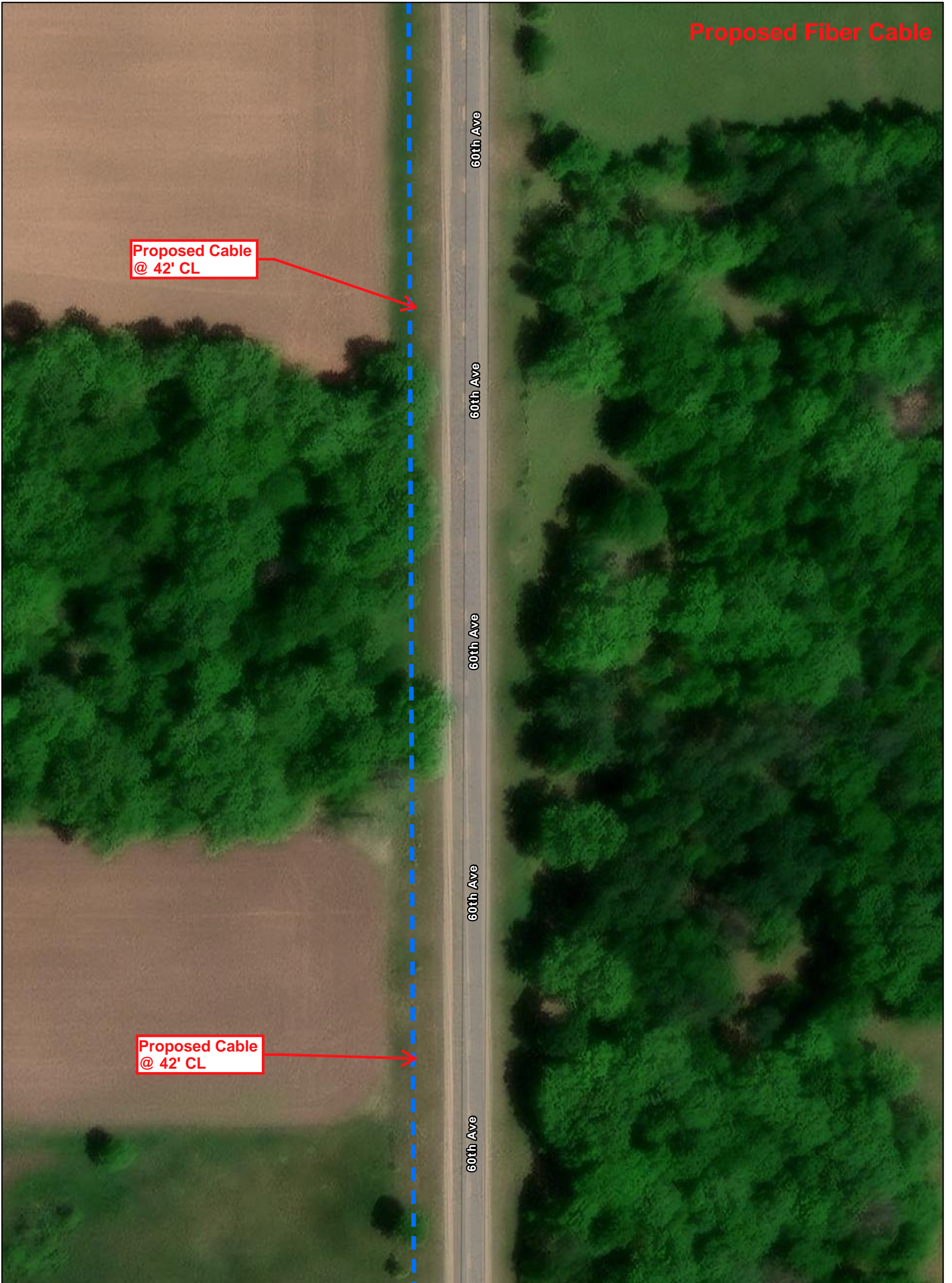
Conduit

Proposed

Exchange Boundary




Esri Community Maps Contributors, © OpenStreetMap, Microsoft, Esri, TomTom, Garmin, SafeGraph, GeoTechnologies, Inc, METI/ NASA, USGS, EPA, NPS, US Census Bureau, USDA, USFWS Maxar

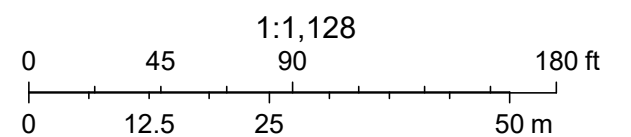


8/29/2024, 5:32:56 PM

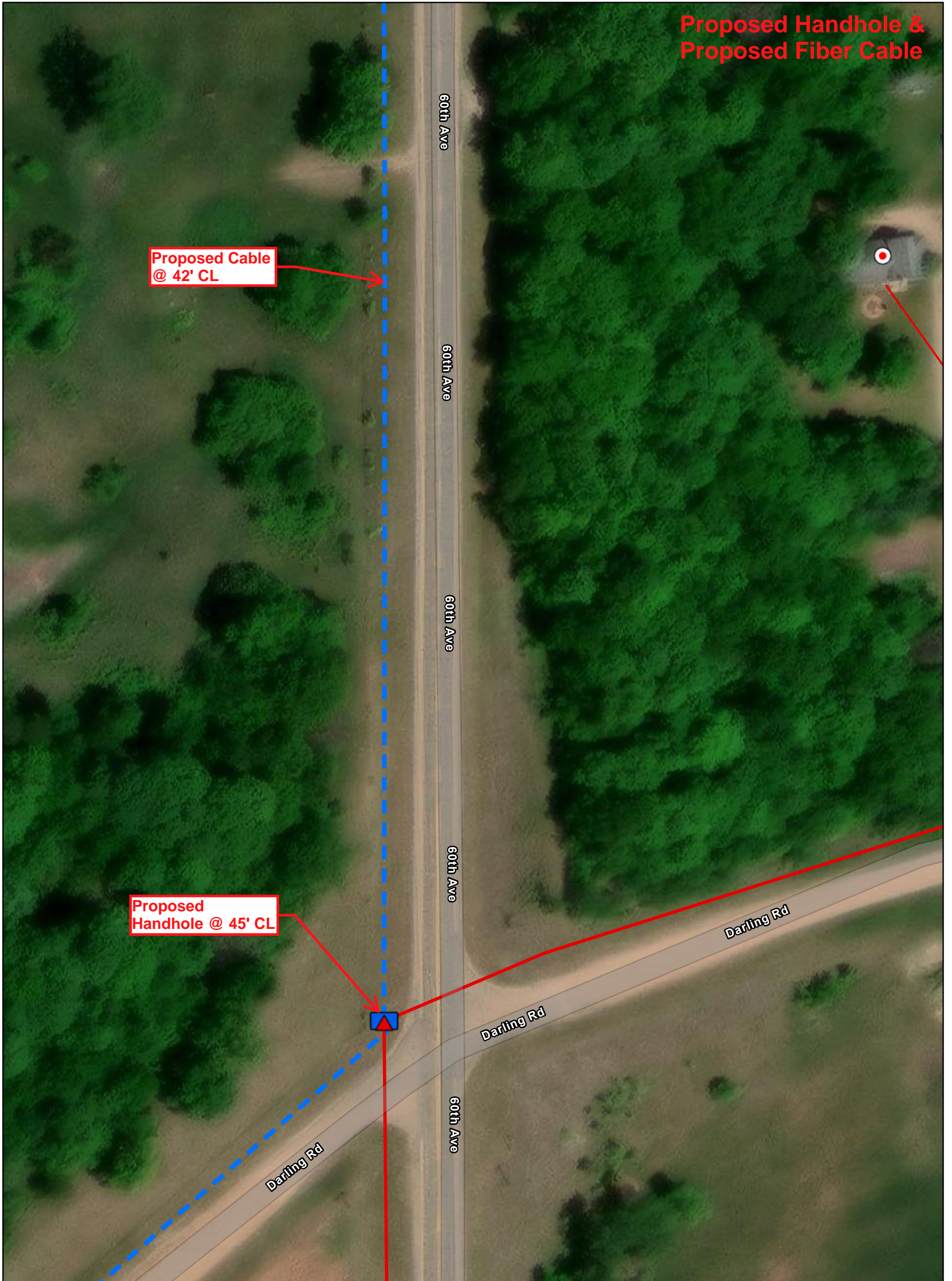
Network Cable

 UG Network - Proposed

 Exchange Boundary



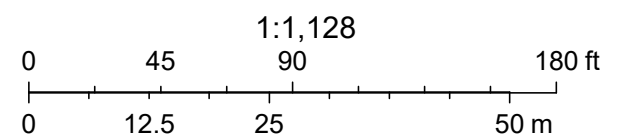
Esri Community Maps Contributors, © OpenStreetMap, Microsoft, Esri, TomTom, Garmin, SafeGraph, GeoTechnologies, Inc, METI/ NASA, USGS, EPA, NPS, US Census Bureau, USDA, USFWS Maxar



8/29/2024, 5:34:08 PM

Customer Location Drop Cable

- | | | | |
|--|-------------------|--|--------------------------------|
| | Active | | Buried Service Drop - Existing |
| | Existing | | UG Distribution - Existing |
| | Proposed | | UG Network - Proposed |
| | Exchange Boundary | | |



Esri Community Maps Contributors, © OpenStreetMap, Microsoft, Esri, TomTom, Garmin, SafeGraph, GeoTechnologies, Inc, METI/ NASA, USGS, EPA, NPS, US Census Bureau, USDA, USFWS Maxar