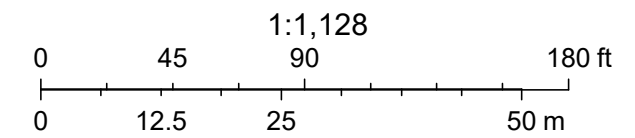
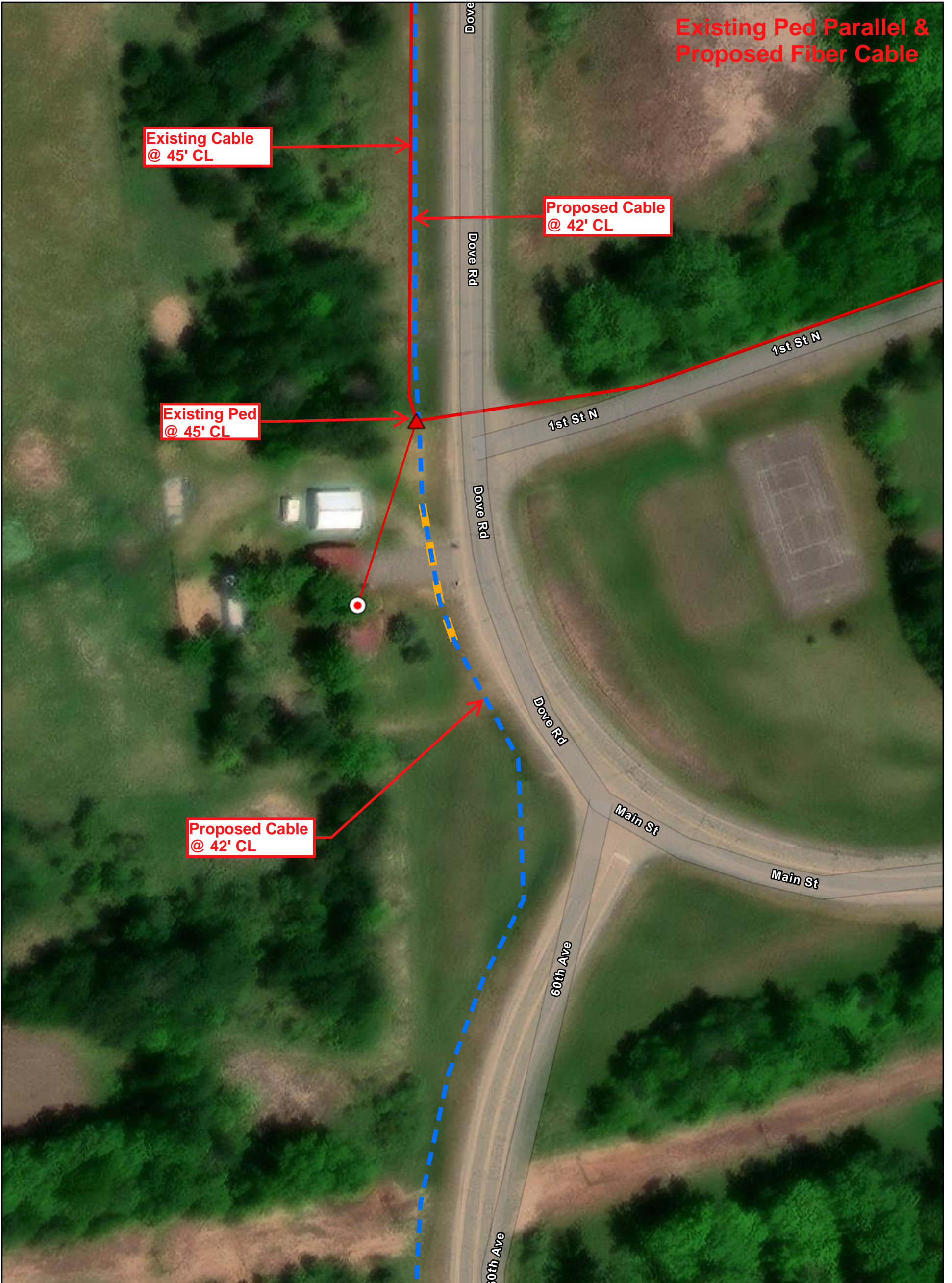


8/29/2024, 12:35:44 PM

- | | | |
|--------------------------|----------------------------|-----------------------|
| Handhole | Cross Connect Cabinet | Network Cable |
| Proposed CO and Cabinets | UG Distribution - Existing | UG Network - Proposed |
| Cabinet | UG Distribution - Proposed | Conduit |
| | Exchange Boundary | Proposed |



Esri Community Maps Contributors, © OpenStreetMap, Microsoft, Esri, TomTom, Garmin, SafeGraph, GeoTechnologies, Inc, METI/ NASA, USGS, EPA, NPS, US Census Bureau, USDA, USFWS Maxar



8/29/2024, 4:52:22 PM

Customer Location

● Active

Pedestals

▲ Existing

Drop Cable

— Buried Service Drop - Existing

Distribution Cable

— UG Distribution - Existing

Network Cable

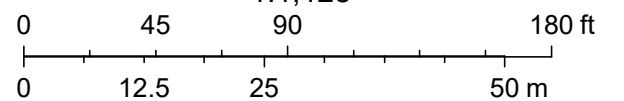
— UG Network - Proposed

Conduit

— Proposed

▭ Exchange Boundary

1:1,128



Esri Community Maps Contributors, © OpenStreetMap, Microsoft, Esri, TomTom, Garmin, SafeGraph, GeoTechnologies, Inc, METI/ NASA, USGS, EPA, NPS, US Census Bureau, USDA, USFWS Maxar