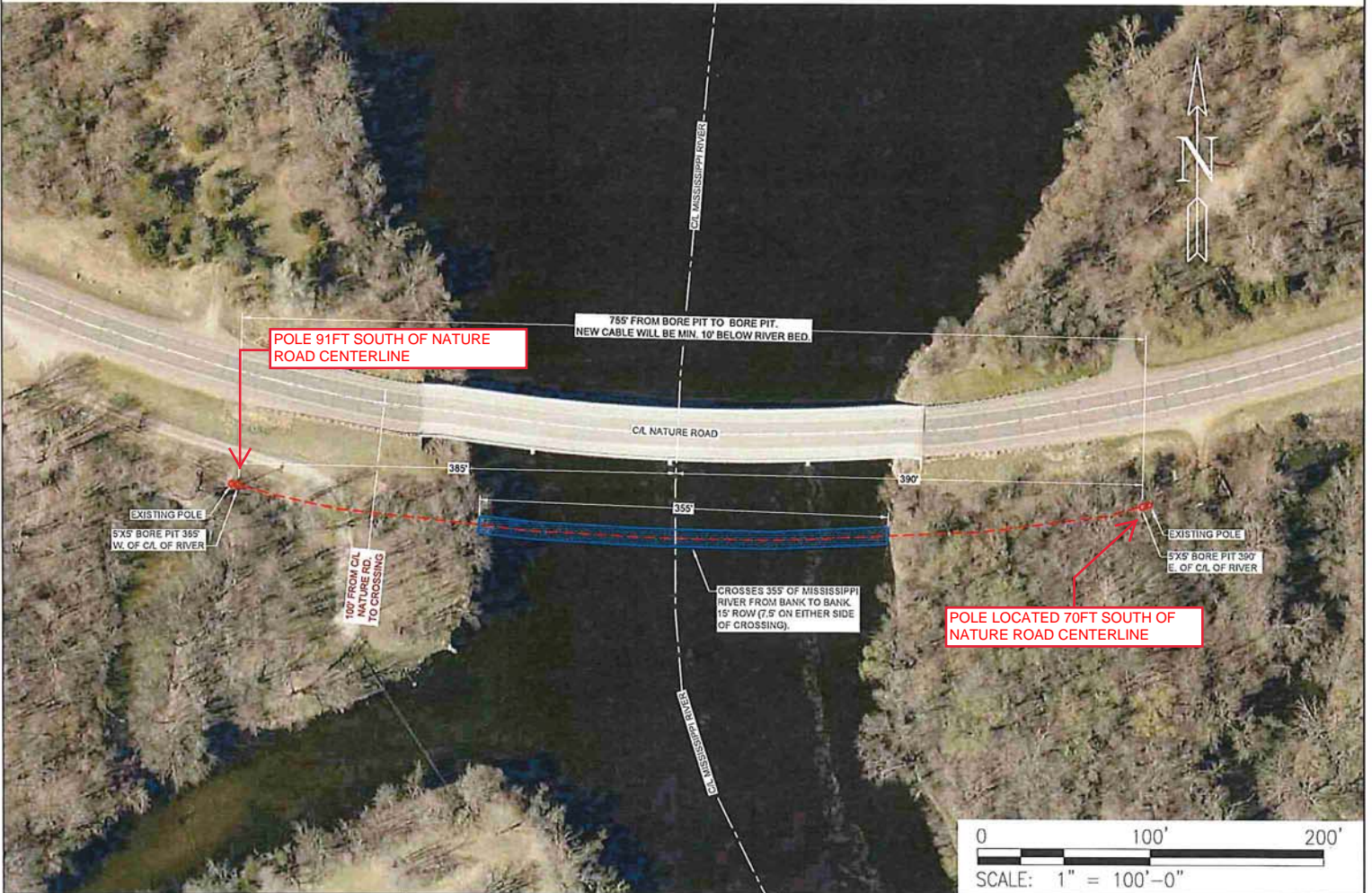
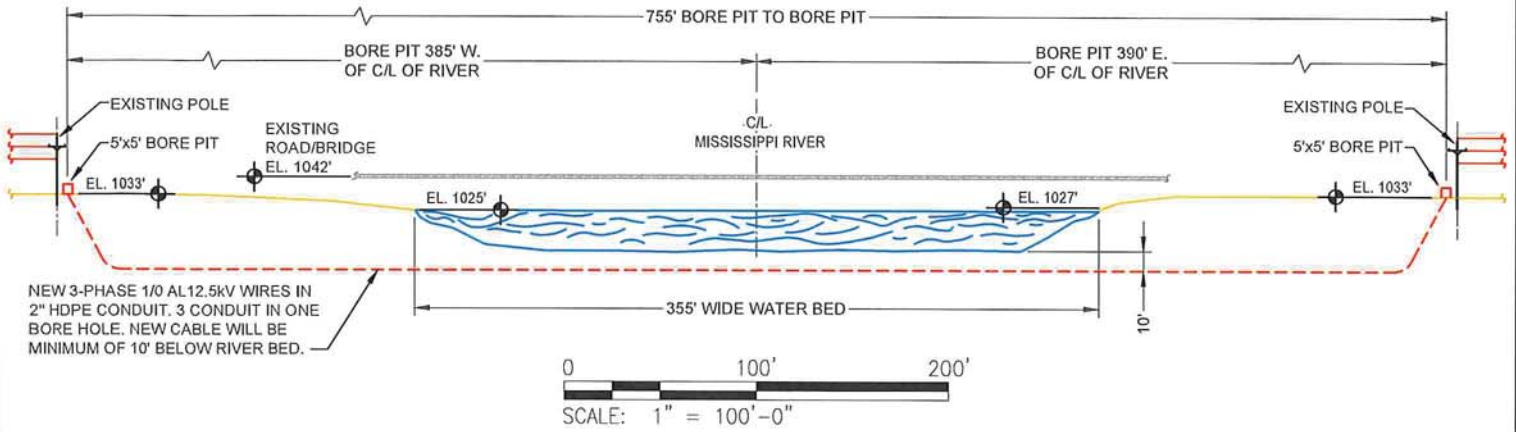


MN DNR LICENSE REQ'D

That part of Mississippi River
NE/SW 8-127-29 and
SE/SE 32-39-32 Morrison County



| | | | | | |
|-------------------------------------|---------|-----------------|----------|--|---------------|
| TYPE OF CONSTRUCTION UNDERGROUND | | DRAWN BY: KJS | APP: . | MINNESOTA POWER DULUTH, MINNESOTA 218-722-2641 | SHEET: 1 OF 1 |
| START: . | COMP: . | DATE: 3-30-23 | ENG: . | | |
| | | SCALE: AS NOTED | W/O: N/A | REVISED: . | |