

STATE OF MINNESOTA DEPARTMENT OF HIGHWAYS Plan and Profile of State Road No. 6

MORRISON COUNTY

From TH. 28 SW. COR. SEC. 13 T129N R31W To SAR. 8 SW. COR. SEC. 6 T130N R30W

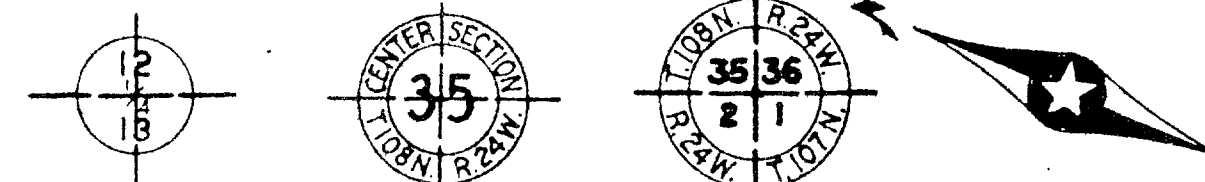
GROSS LENGTH 46,840.4 FEET 8.8713 MILES
LENGTH OF EXCEPTIONS 30 FEET .0051 MILES
NET LENGTH 46,810.4 FEET 8.8662 MILES

PLAN. 1 Inch = 200 Feet.
PROFILE, Horiz. 1 Inch = 200 Feet. Vert. 1 Inch = 20 Feet
SCALES: WORKING PLANS { Horiz. 1 Inch = 100 Feet
Vert. 1 Inch = 10 Feet
Cross-Section, 1 Inch = Feet
LAYOUT
Scale. 1 Inch = 10560 Feet

THE "SPECIFICATIONS FOR HIGHWAY CONSTRUCTION" DATED JULY 1, 1947, AND SUBMITTED FOR APPROVAL BY THE DIVISION ENGINEER OF THE BUREAU OF PUBLIC ROADS, OCT. 15, 1947, AS MODIFIED BY "SUPPLEMENT 1" THERETO DATED APRIL 15, 1953 AND SUBMITTED FOR APPROVAL BY THE DIVISION ENGINEER OF THE BUREAU OF PUBLIC ROADS ON MAR. 25, 1953, SHALL GOVERN.

CONVENTIONAL SIGNS	ABBREVIATIONS
STATE LINE	EXCAVATION
COUNTY LINE	EARTH
TWP OR RANGE LINE	LOOSE ROCK
SECTION LINE	SOLID ROCK
RIGHT OF WAY LINE	EMBANKMENT
CORPORATE OR CITY LIMITS	OVERHAUL
ROAD CENTER LINE	SURFACING
RETAINING WALL	HAND DITCHING
RAILROADS	SPECIAL EXCAVATION
CREEK	SPECIAL FLOWING
DRY RUN	GUARD RAIL
DRAINAGE DITCH	CORRUGATED METAL CULVERT
POWER POLE LINE	SECTIONAL CONCRETE CULVERT
TELEPHONE OR TELEGRAPH LINE	TON MILES
CULVERTS - PLAIN	TELEPHONE POLE
WITH ENDWALLS	POWER POLE
WITH WINGWALLS	PLACE
DROP INLET	IN PLACE
FENCE LINE	REPLACE
GRAVEL PIT	RIGHT
SAND PIT	LEFT
CLAY PIT	INTERSECTION ANGLE
ROCK QUARRY	RADIUS
SPRINGS	TANGENT
MARSH	LENGTH OF CURVE
BRUSH OR TIMBER	POINT OF CURVE
HEDGE	POINT OF TANGENT
ROCK LEDGE	POINT OF INTERSECTION
SAND	VERTICAL CURVE
EDGE OF CUT	BENCH MARK
TOE OF EMBANKMENT	ELEVATION
RAILROAD R/W LINE	ACRES
BUILDING (One Story Frame)	

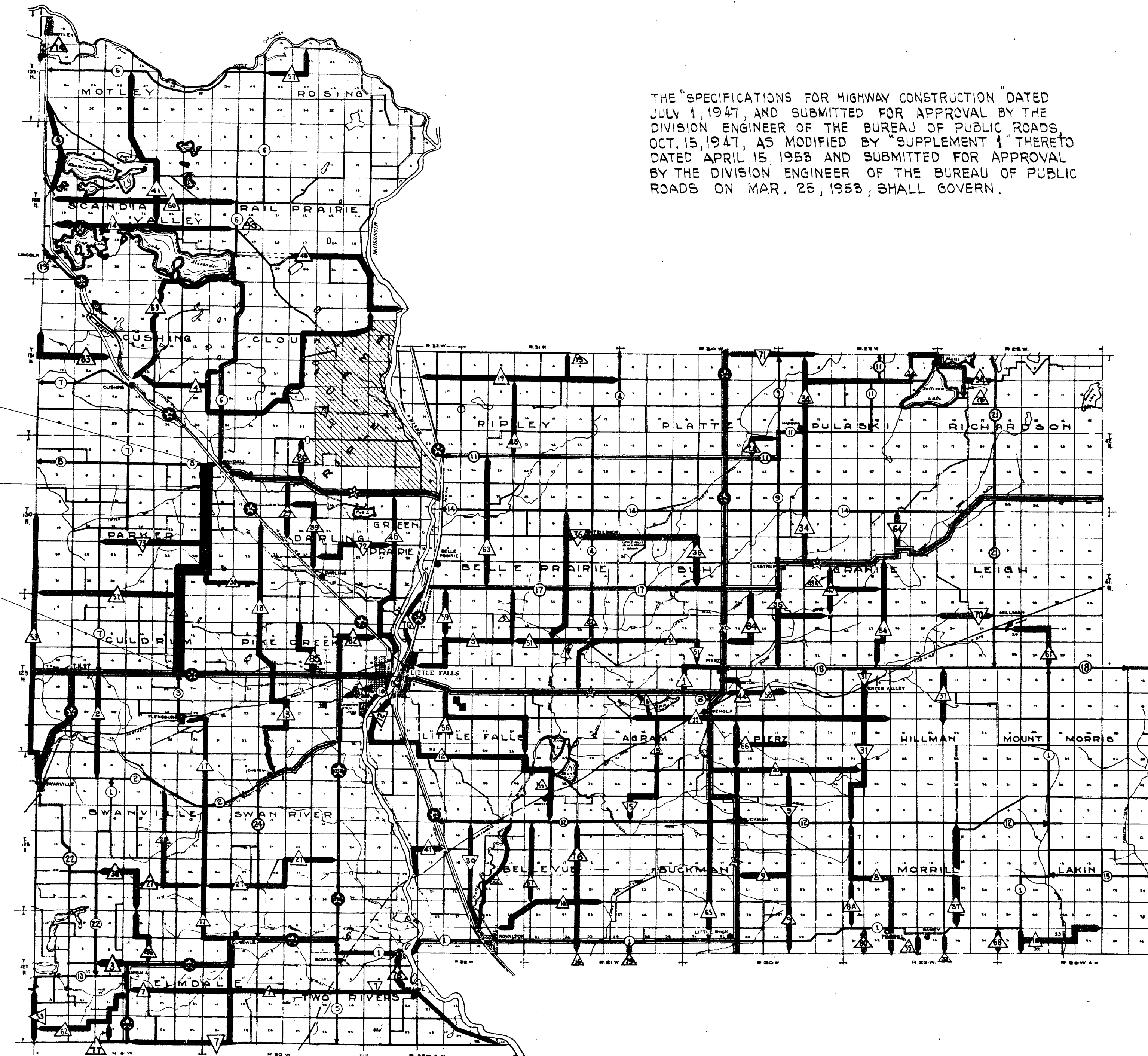
NOTE: SECTION NUMBERS READ FROM THE SOUTH



END PROJ. STA. 468+40.4
SP. 49-523-01 MINN. S 420(1)

GRADING EXCEPTION 30'
BRIDGE NO 3001
STA. 419+47 TO 419+77

BEG PROJ. STA. 0+00
SP. 49-523-01 MINN. S 420(1)



INDEX OF SHEETS

- Sheet No. 1. Title Sheet and Layout Map
" No. 2. Typical Cross-Sections and Statement
" No. 3-20 Plan and Profile, Sta. 0+00. to Sta. 468+40.4
" No. 21-48 Cross Sections

MINN. PROJ. S 420(1)

DEPARTMENT OF COMMERCE BUREAU OF PUBLIC ROADS	
RECOMMENDED FOR APPROVAL:	
DISTRICT ENGINEER	DATE
APPROVED:	
DIVISION ENGINEER	DATE

PLANNED BY _____ 19____
COUNTY ENGINEER FOR _____ COUNTY

RECOMMENDED FOR APPROVAL _____ 19____
DISTRICT ENGINEER

RECOMMENDED FOR APPROVAL *S. M. E.* 19____
ENGINEER OF COUNTY DIVISION

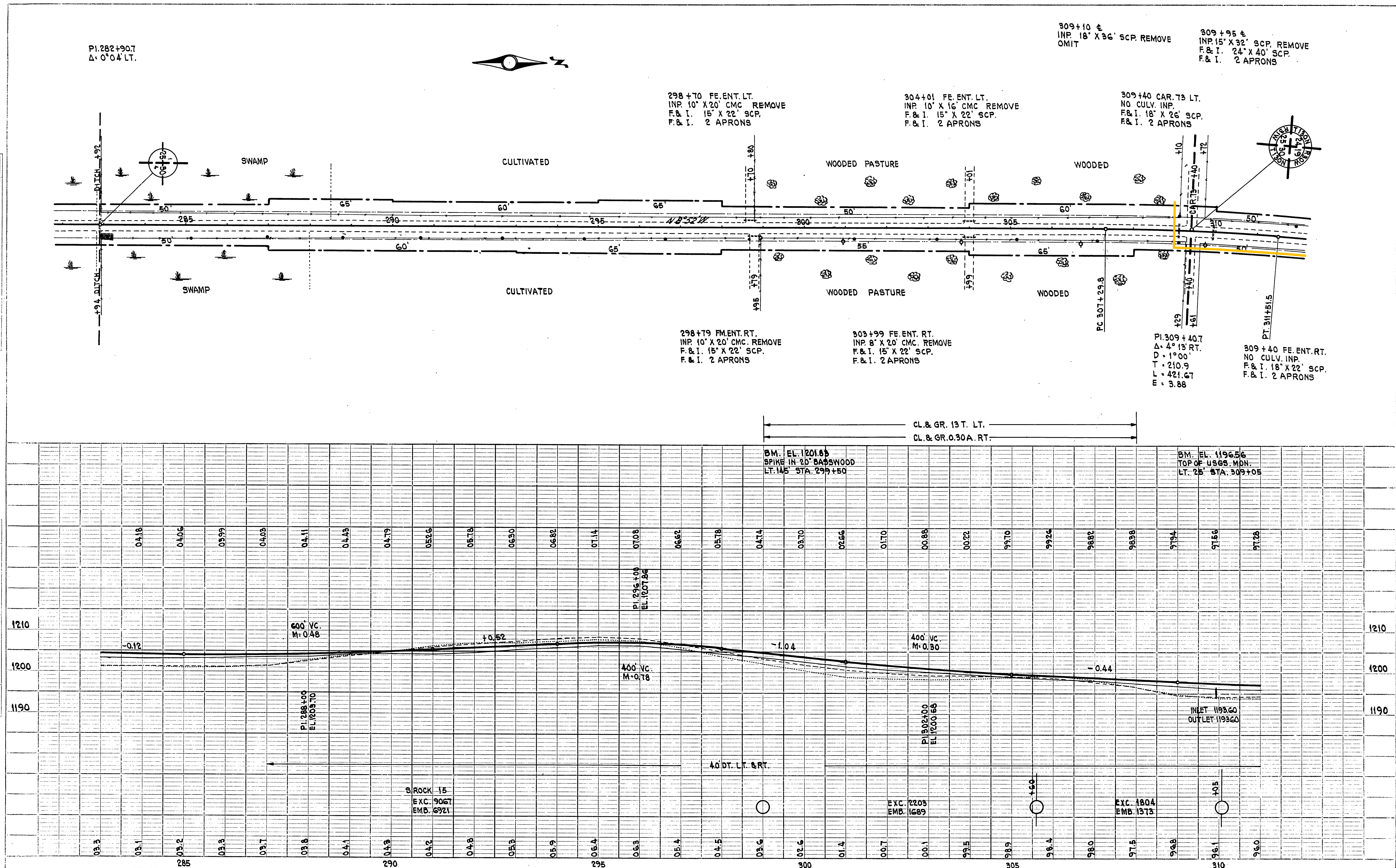
APPROVED *3/16/54* 1954 *T. T. T.*
ENGINEER OF PLANS AND SURVEYS

S. M. E.
MAR. 2, 1954 3635

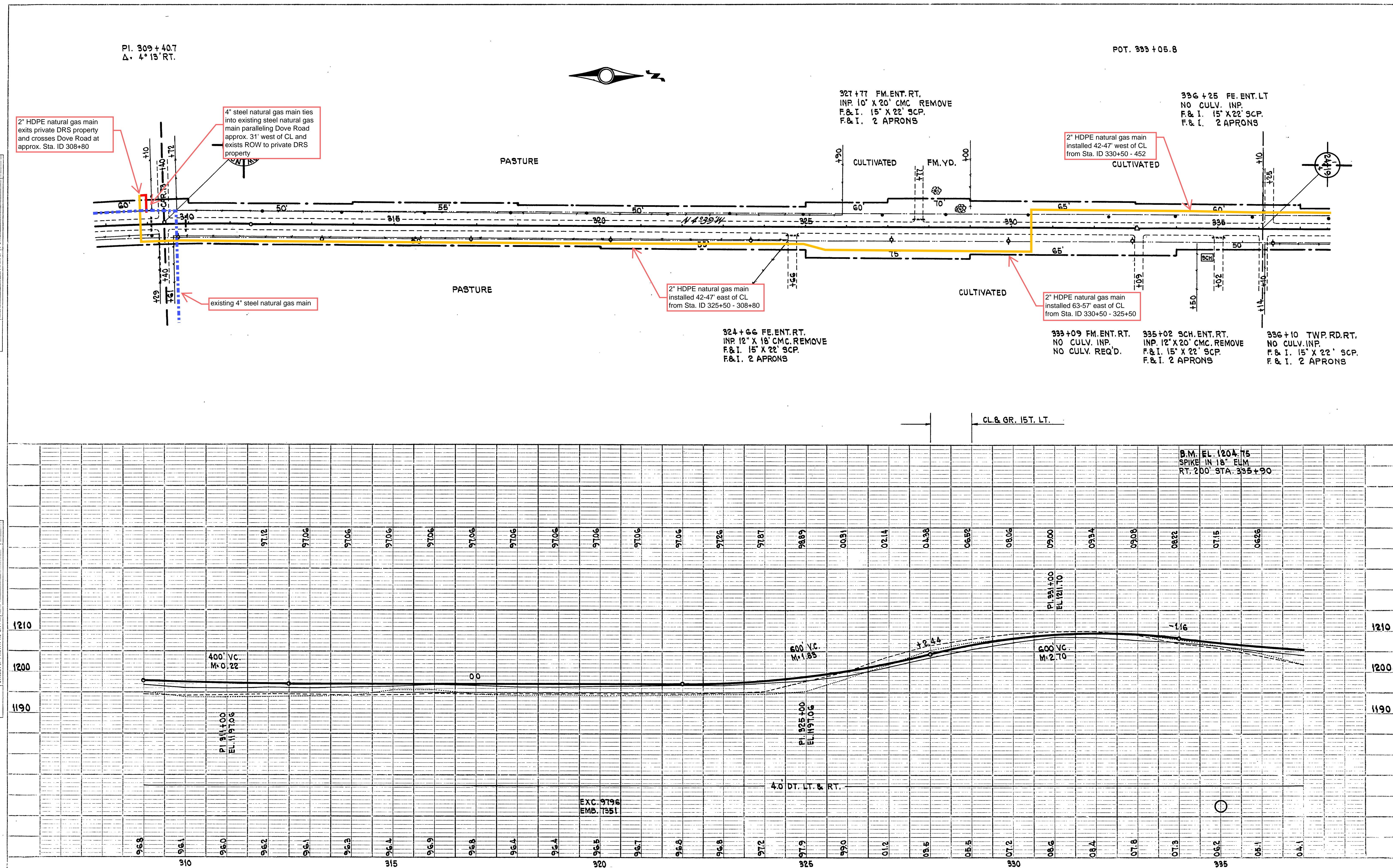
SP. 49-523-01 MINN. S 420(1)

DATE	
BY	
PROJECT	
DESCRIPTION	
REVISIONS	
NO.	DESCRIPTION
1	AS SHOWN

DATE	
BY	
PROJECT	
DESCRIPTION	
REVISIONS	
NO.	DESCRIPTION
1	AS SHOWN

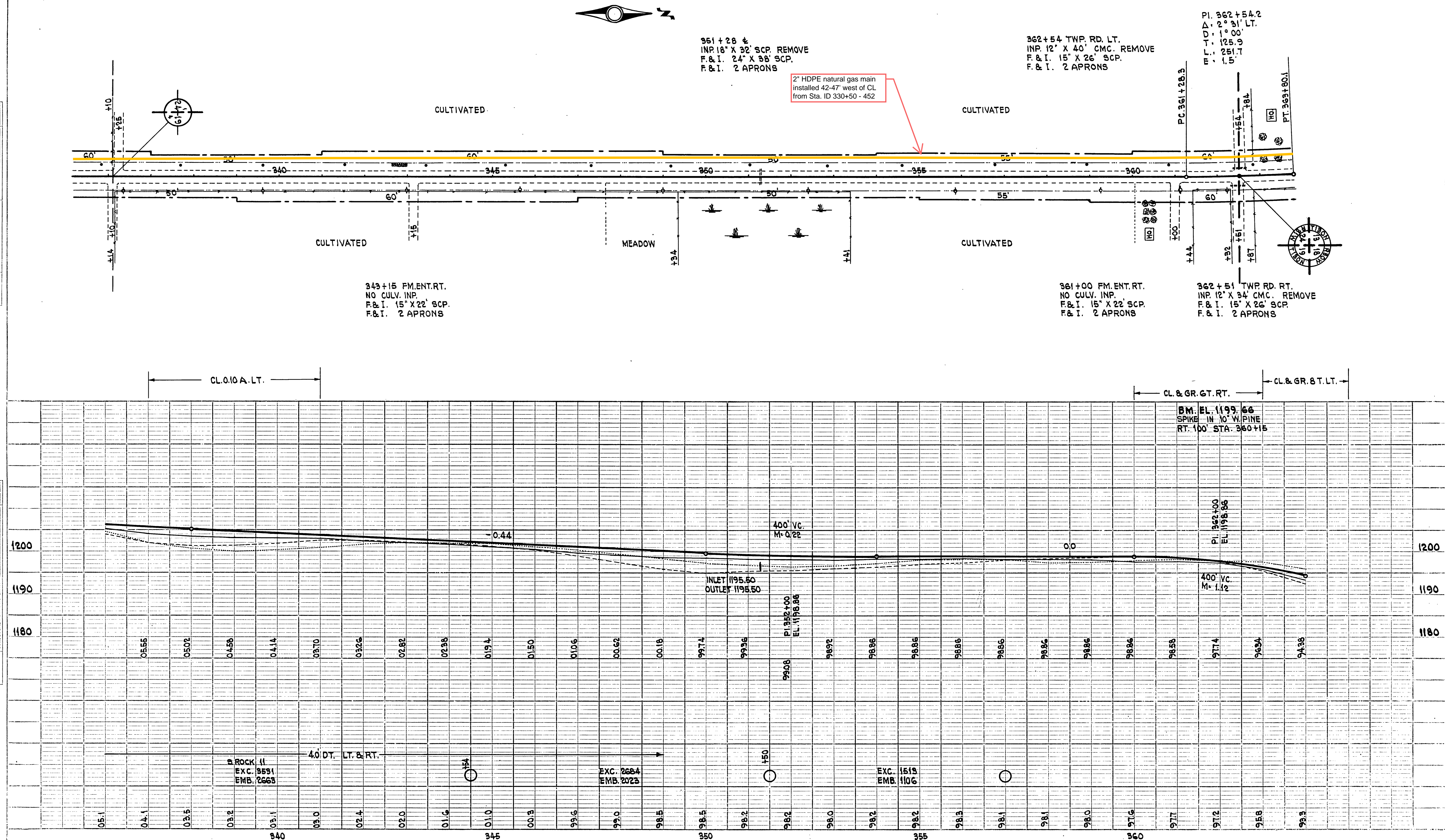


SEARCHED INDEXED SERIALIZED FILED MAR 19 1964 FBI - NEW YORK	FILED MAR 19 1964 FBI - NEW YORK	BY [Signature]	DATE MAR 19 1964
---	--	-------------------	---------------------



DATE	
BY	
CHECKED	
DESIGNED	
IN CHARGE	
PROJECT	
LOCATION	
SCALE	
NOTES	

DATE	
BY	
CHECKED	
DESIGNED	
IN CHARGE	
PROJECT	
LOCATION	
SCALE	
NOTES	



DATE	
BY	
CHECKED	
DESIGNED	
IN CHARGE	
NO.	

DATE	
BY	
CHECKED	
DESIGNED	
IN CHARGE	
NO.	

PI. 362+54.2
Δ = 2° 31' LT.

363+88 FM. ENT. LT.
INP. 12" X 20' CMC. REMOVE
F&I. 15" X 22' SCP.
F&I. 2 APRONS

374+75 ±
INP. 18" X 38' CMC. REMOVE
F&I. 24" X 50' SCP.
F&I. 2 APRONS

376+45 FE. ENT. LT.
INP. 12" X 16' CMC. REMOVE
F&I. 15" X 22' SCP.
F&I. 2 APRONS

385+60 ±
INP. 18" X 32' SCP. REMOVE
F&I. 24" X 38' SCP.
F&I. 2 APRONS

PI. 388+67.0
Δ = 0° 05' RT.

388+78 FE. ENT. LT.
INP. 12" X 16' CMC. REMOVE
F&I. 15" X 22' SCP.
F&I. 2 APRONS

2" HDPE natural gas main
installed 42-47' west of CL
from Sta. ID 330+50 - 452

379+09 FM. ENT. RT.
NO CULV. INP.
NO CULV. REQ'D.

383+04 FM. ENT. RT.
INP. 12" X 24' CMC. REMOVE
F&I. 15" X 22' SCP.
F&I. 2 APRONS

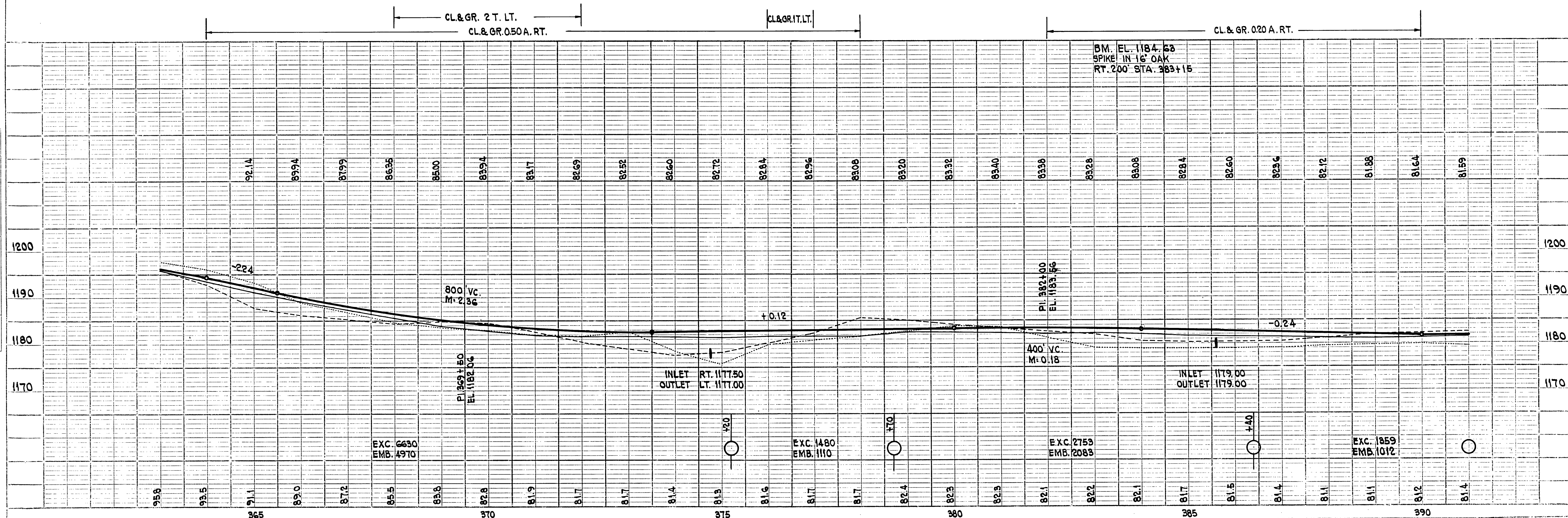


PLATE 1 - PLAN/PROFILE OF P.R. & C. STANDARD
1/4" = 1' HORIZ. DIST. 1/4" = 1' VERT. DIST.

DATE	
BY	
CHECKED	
DESIGNED	
APPROVED	
NO.	

DATE	
BY	
CHECKED	
DESIGNED	
APPROVED	
NO.	

PI. 388+67.0
Δ: 0°05' RT.

POT. 405+00

392+43 FE. ENT. LT.
NO CULV. INP.
F&I. 15' X 22' SCP.
F&I. 2 APRONS

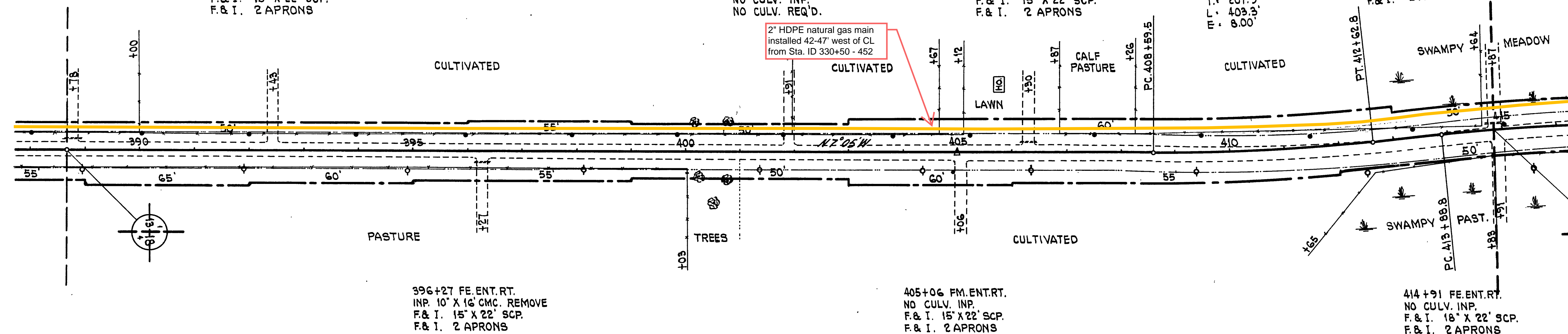
401+95 FE. ENT. LT.
NO CULV. INP.
NO CULV. REQ'D.

406+30 FM. ENT. LT.
INP. 10' X 24' CMC. REMOVE
F&I. 15' X 22' SCP.
F&I. 2 APRONS

PI. 410+61.4
Δ: 6°03' LT.
D: 1°30'
T: 201.9'
L: 403.3'
E: 8.00'

414+87 FE. ENT. LT.
INP. 18' X 30' CMC. REMOVE
F&I. 18' X 22' SCP.
F&I. 2 APRONS

2" HDPE natural gas main
installed 42-47' west of CL
from Sta. 1D 330+50 - 452



396+27 FE. ENT. RT.
INP. 10' X 16' CMC. REMOVE
F&I. 15' X 22' SCP.
F&I. 2 APRONS

405+06 FM. ENT. RT.
NO CULV. INP.
F&I. 15' X 22' SCP.
F&I. 2 APRONS

414+91 FE. ENT. RT.
NO CULV. INP.
F&I. 18' X 22' SCP.
F&I. 2 APRONS

CL&GR. IT. RT.

CL&GR. 2T. LT.
CL&GR. 2T. RT.

CL&GR. 5T. LT.

BM. EL. 1185.88
SPIKE IN 18" OAK
RT. 225' STA. 396+25

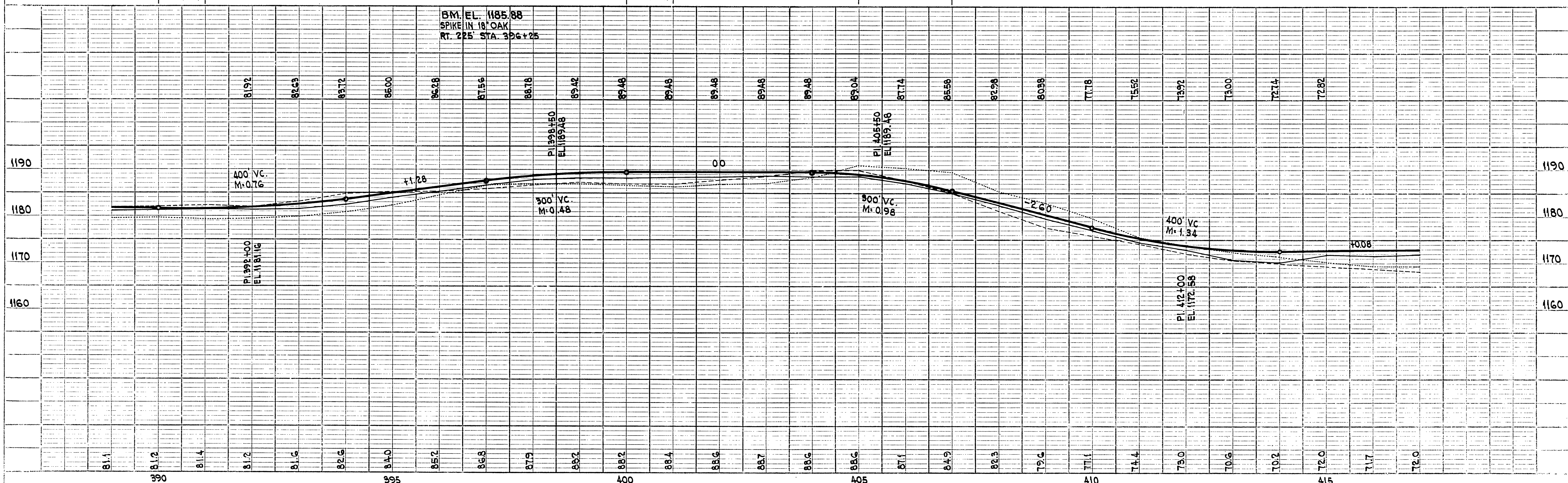


PLATE 1—PLAN/PROFILE OF P.H.D.E. STANDARDS
THE FREDERICK POST CO., CHICAGO

DATE	
BY	
PROJECT	
SECTION	
DATE	
BY	
PROJECT	
SECTION	
DATE	
BY	
PROJECT	
SECTION	

DATE	
BY	
PROJECT	
SECTION	
DATE	
BY	
PROJECT	
SECTION	
DATE	
BY	
PROJECT	
SECTION	



PI. 432+55.3
Δ = 2° 12' LT.

POT. 441+47.3

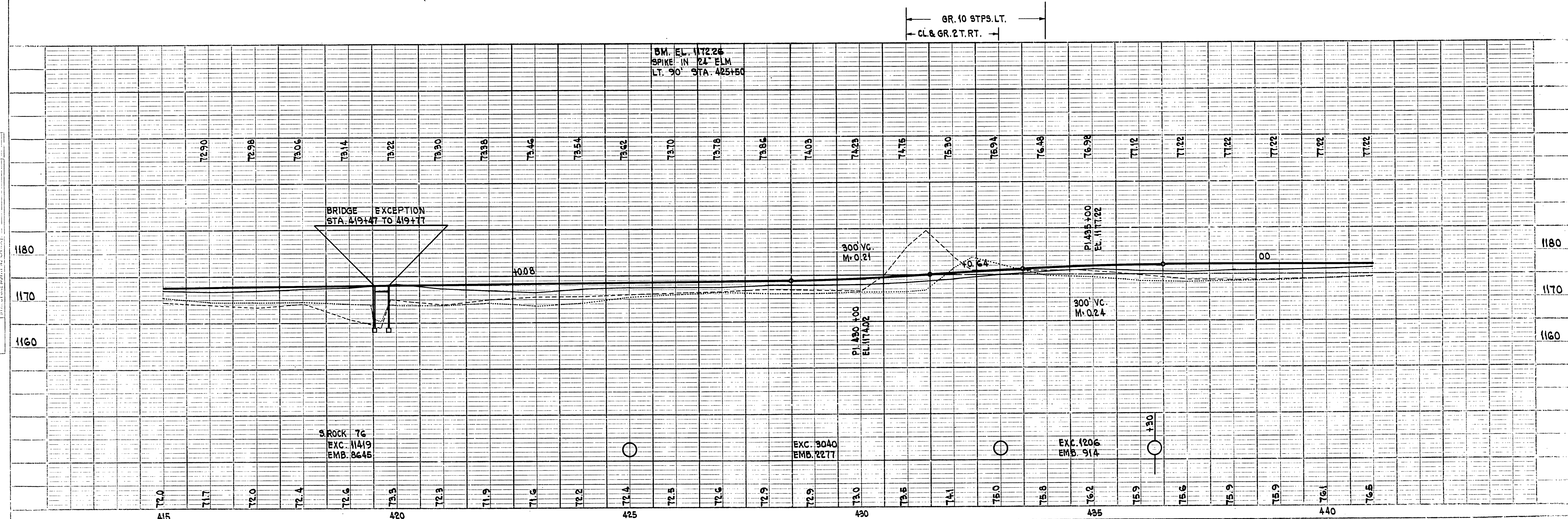
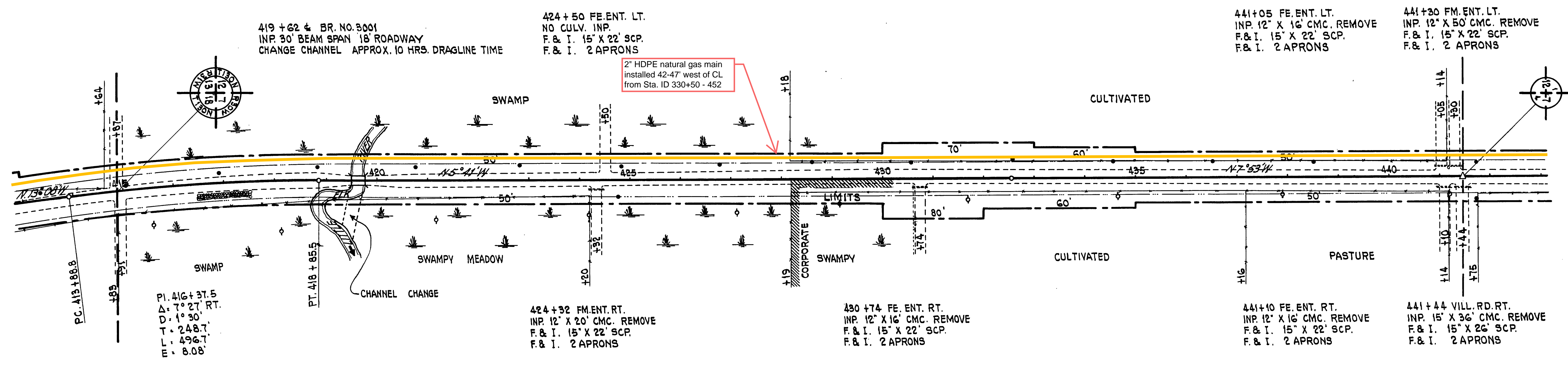


PLATE 1-PLAN/PROFILE O.P.R. & E. STANDARD
THE FREDERICK POST CO., CHICAGO

DATE	
BY	
CHECKED	
DATE	
NO.	
NOTE	
DATE	
NO.	

DATE	
BY	
CHECKED	
DATE	
NO.	
NOTE	
DATE	
NO.	

POT. 447+47.3

POT. 458+36.9

POT. 468+40.4

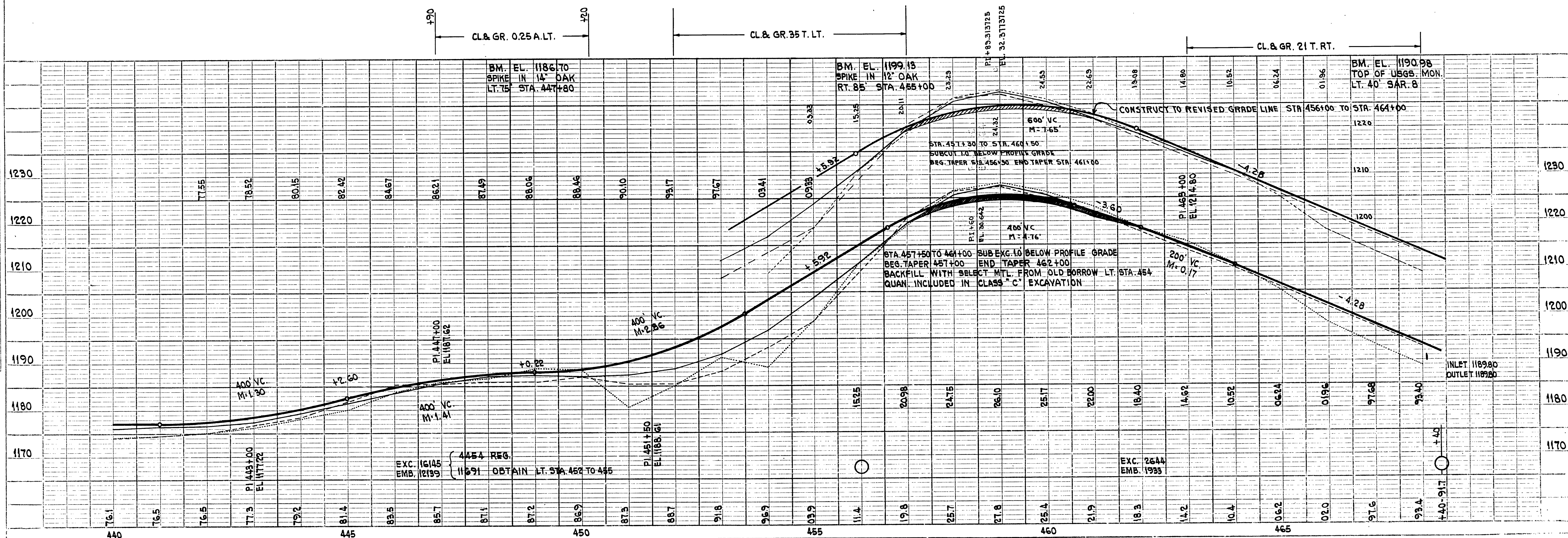
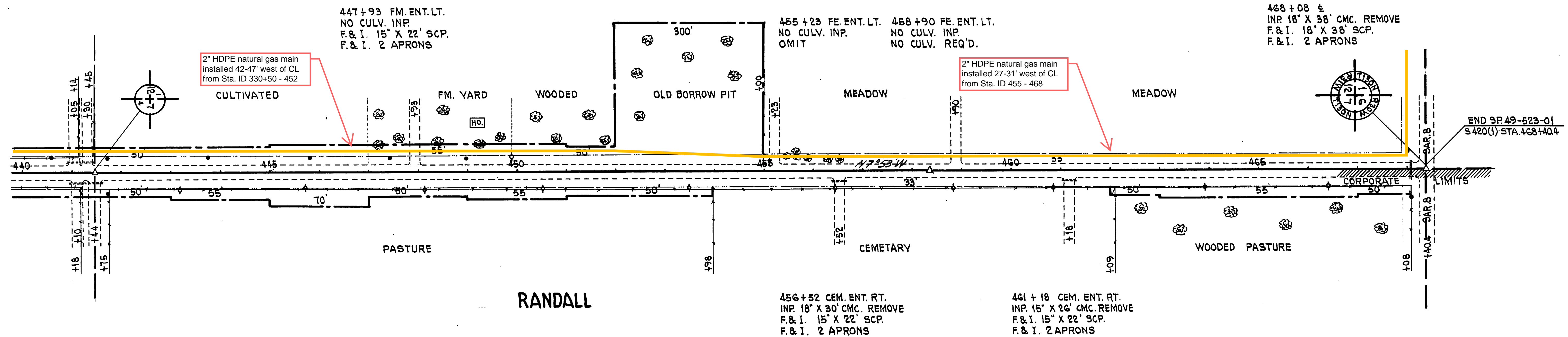


PLATE 1-PLAN-PROFILE OF R.R. & STANDARD
THE FREDRICK POST CO., CHICAGO

SAR 6
T.H. 28 TO SAR 8 SHEET 20 OF 48 SHEETS SP. 49-523-01 S 420(1)