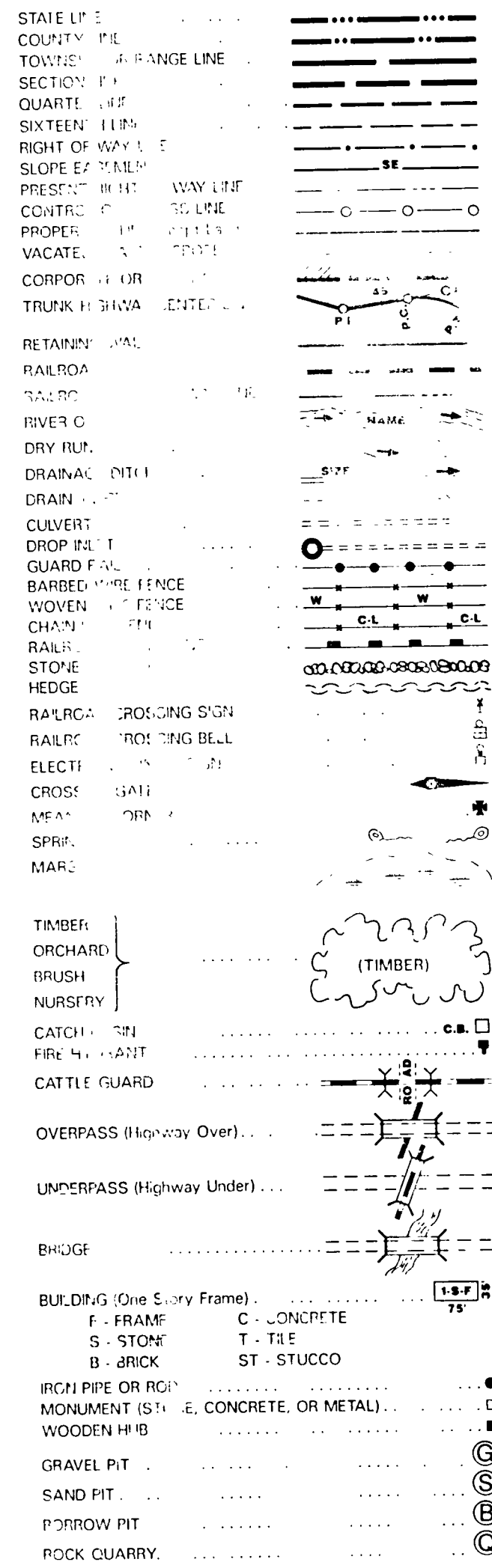
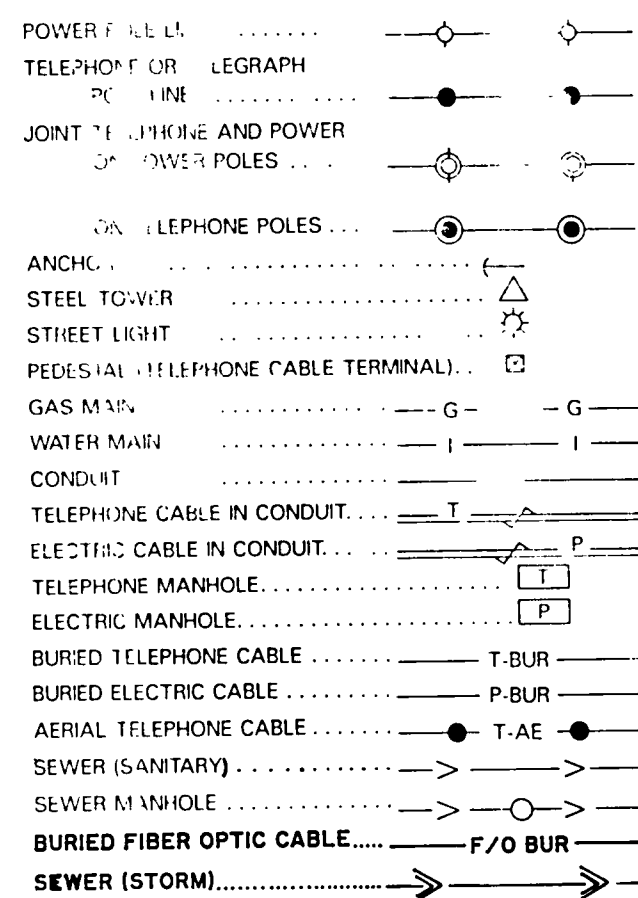


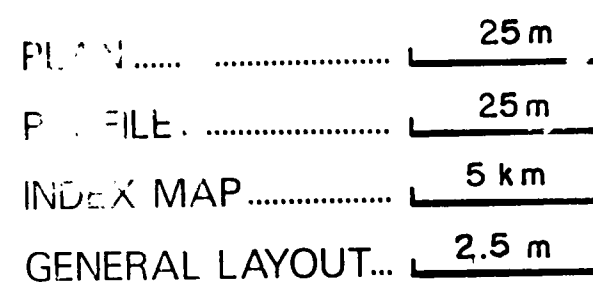
PLANS SYMBOLS



UTILITIES SYMBOLS



SCALES



MINNESOTA DEPARTMENT OF TRANSPORTATION MORRISON COUNTY

CONSTRUCTION PLAN FOR GRADING, AGG. BASE, BIT. SURF., AGG. SHOULDER, CULVERT REPLACEMENT, CURB AND GUTTER & STORM SEWER

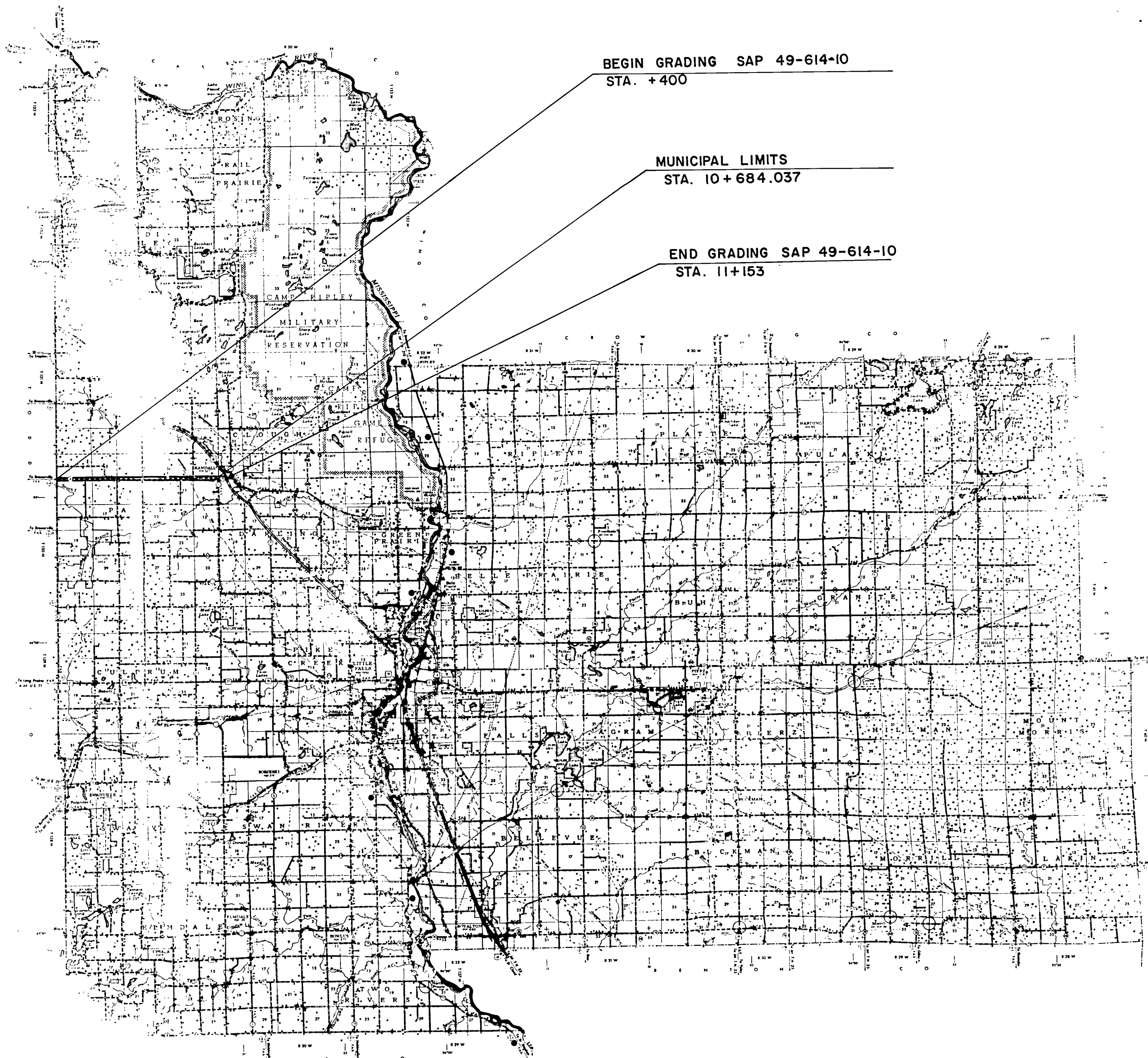
LOCATED ON CSAH 14 BETWEEN WEST COUNTY LINE AND TH 10 in RANDALL (Geographic Description)
FROM NW COR SEC 7-130-31 TO 490m E OF NW COR SEC 7-130-30 (Legal Description)

STATE AID PROJ. NO. 49-614-10

STATE AID PROJ. NO.

GROSS LENGTH 10 753 meters 10.753 km
BRIDGES-LENGTH
EXCEPTIONS-LENGTH
NET LENGTH 10 753 m 10.753 km

GROSS LENGTH 35 279 FEET 6.682 MILES
BRIDGES-LENGTH
EXCEPTIONS-LENGTH
NET LENGTH 35 279 FEET 6.682 MILES



MINN. PROJ. NO.
MINN. PROJ. NO.

GOVERNING SPECIFICATIONS

THE 1995 EDITION OF THE MINNESOTA DEPARTMENT OF TRANSPORTATION SPECIFICATIONS FOR CONSTRUCTION

INDEX

SHEET NO. 1
SHEET NO. 2-3 EST. QUANT. & TYP. SECTION
SHEET NO. 4 EROSION & TRAFFIC CONTROL
SHEET NO. 5-21 PLAN & PROFILE
SHEET NO. 22-48 CROSS SECTION
SHEET NO. 49-50 APRON RD. (TWP) PLAN, PROFILE, CROSS SECTION

THIS PLAN CONTAINS 49

DESIGN DESIGNATION

RURAL / MUNICIPAL

ΣN1820 209 000 / 752 000

R Value 20 / 12

ADT (1999) = 440 / 1537

Proj. ADT (2019) = 704 / 2459

Proj. HCADT () =

Soil Factor

9.1 tonne Design

Shoulder Width 2 m / 12.2m

FUNCTIONAL CLASSIFICATION MAJOR COLLECTOR

MUNICIPAL SECTION 2 - 3.6 m TRAFFIC LANES
2 - 2.4 m PARKING LANES

Design Speed 90 km/h / 50km/h

Based on STOPPING Sight Distance

Height of eye 1070mm height of object 150 mm

Design Speed not achieved at:

STA. +400 TO STA. +800 KPH 80

STA. TO STA. PH

STA. TO STA. PH

I HEREBY CERTIFY THAT THIS PLAN WAS PREPARED BY ME OR UNDER MY DIRECT SUPERVISION AND THAT I AM A DULY REGISTERED PROFESSIONAL ENGINEER UNDER THE LAWS OF THE STATE OF MINNESOTA.

DATE 2/16/20 REG. NO. 18286 ENGR. J. E. B.

COUNTY MORRISON

Recommended for Approval 19

DISTRICT STATE AID ENGINEER

Approved 3-7-2020 K. J. Harrison

STATE AID ENGINEER

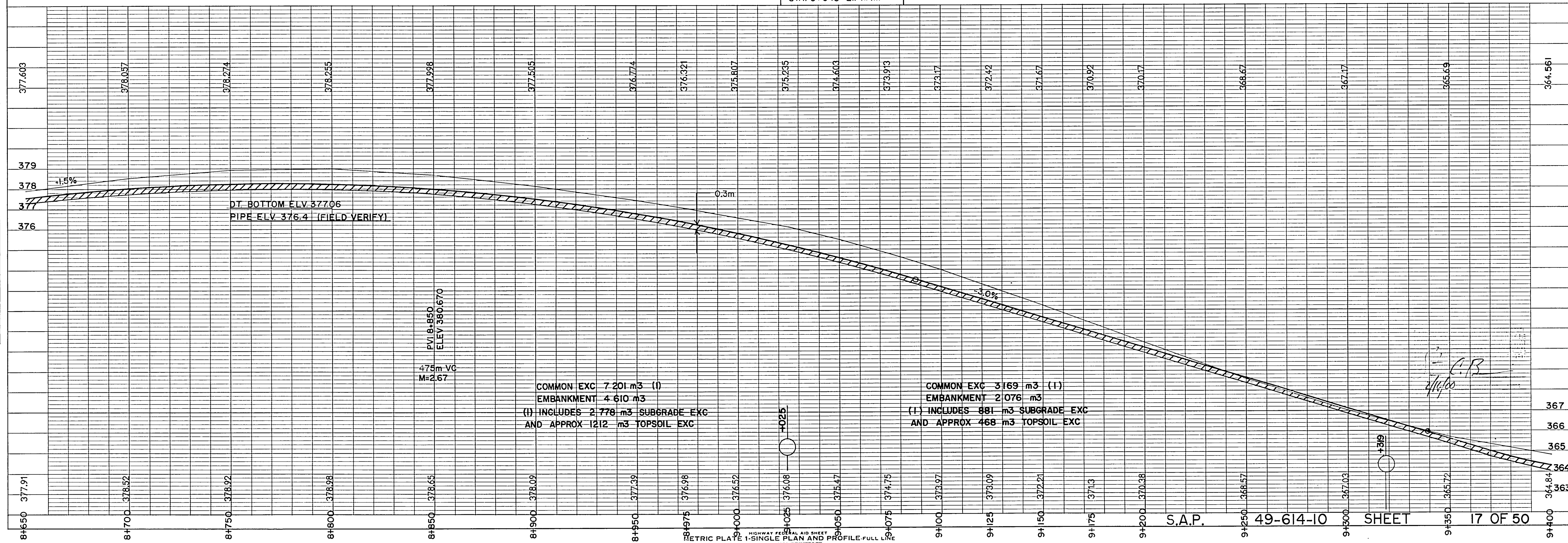
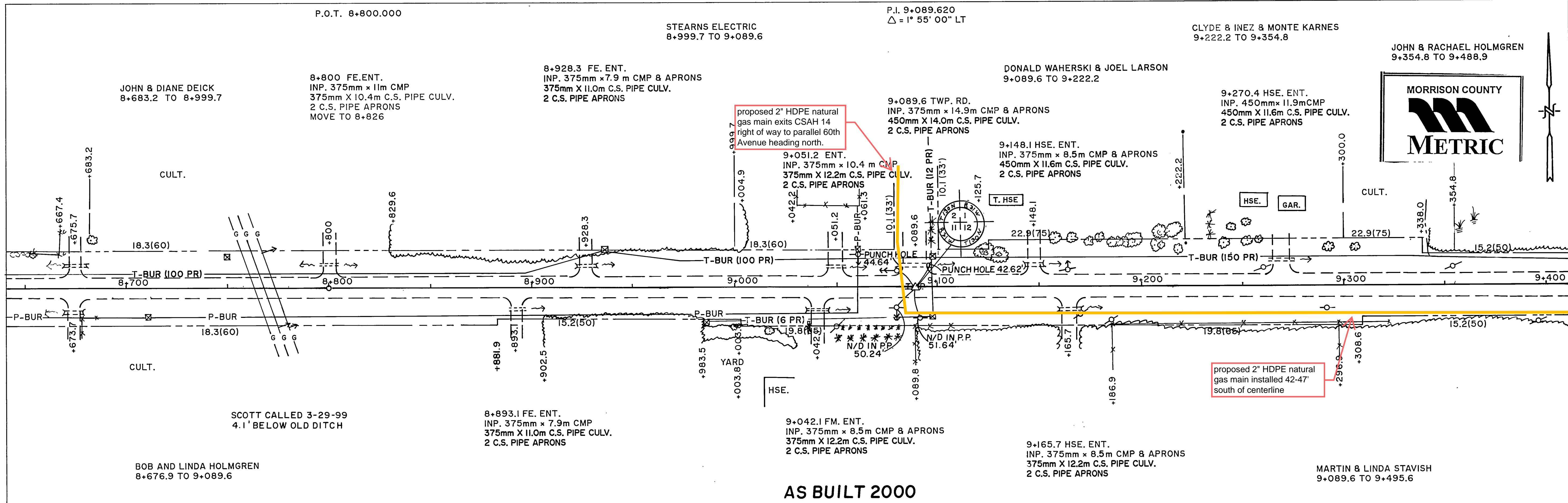
STATE AID PROJ. NO. 49-614-10

STATE PROJ. NO.

SHEET NO. 1 OF 50 SHEETS

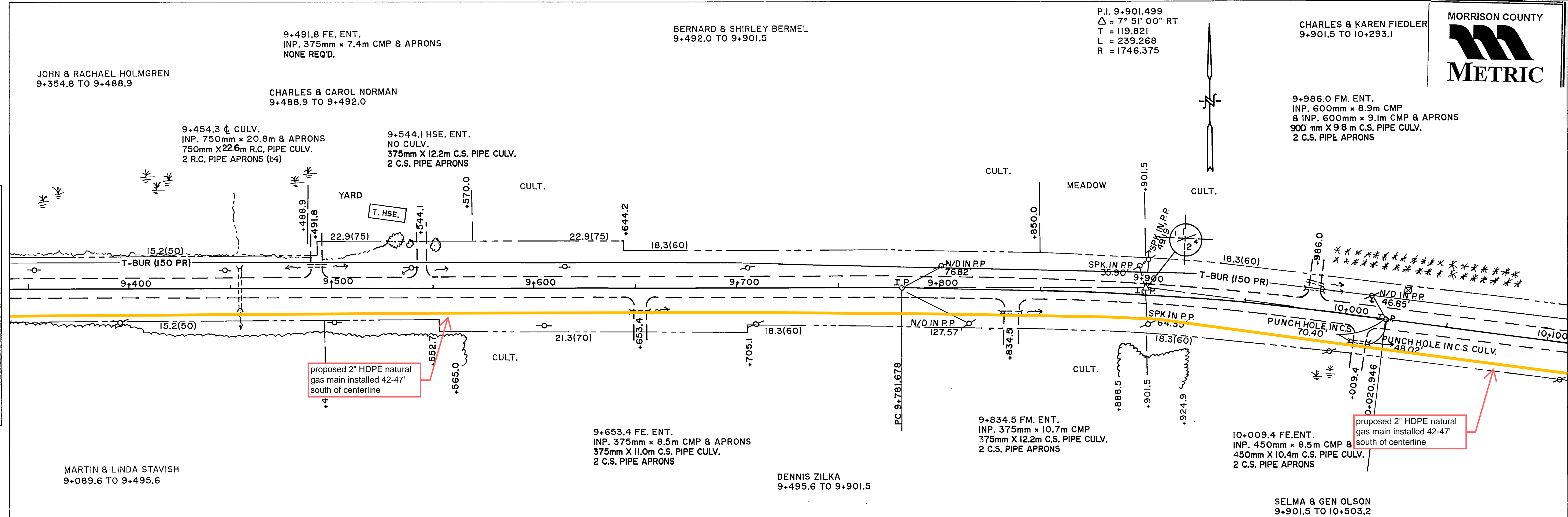
PLAN	SURVEYED	DATE
	NOTED	
	NOTE BOOK	
	NO. OF WAY CHECKED	

PROFILE	SURVEYED	DATE
	NOTED	
	NOTE BOOK	
	NO. OF NOTATIONS CHECKED	



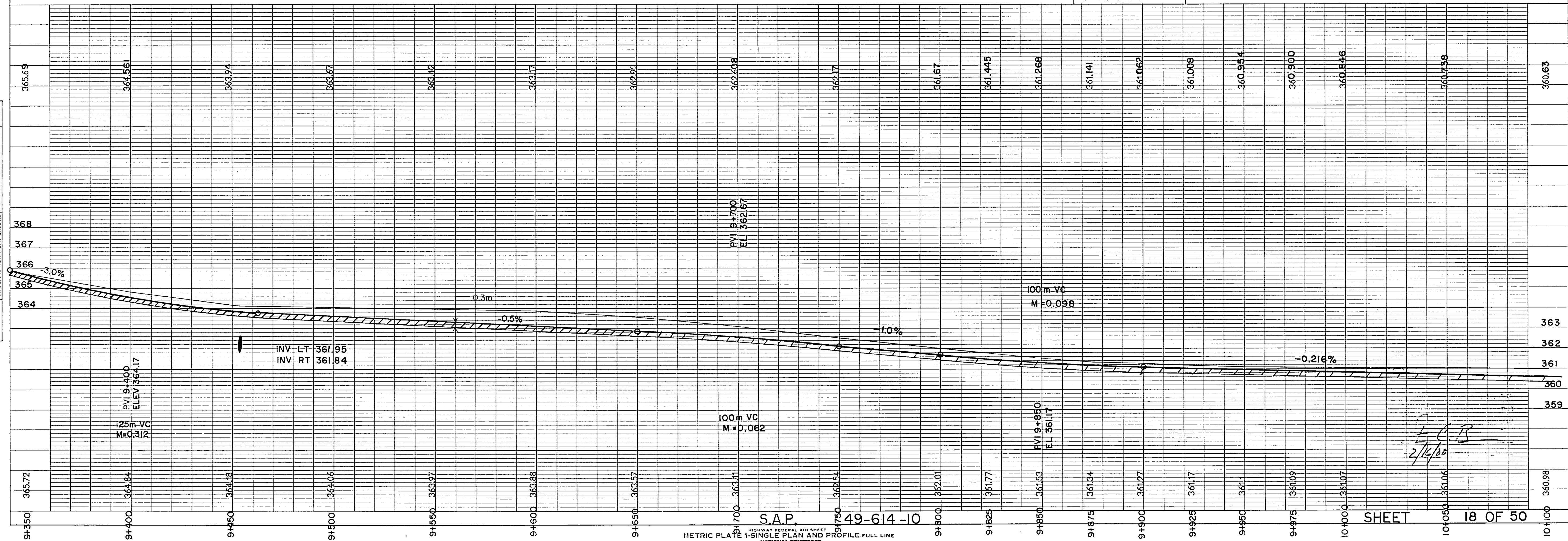
PLAN	SURVEYED	DATE
	NOTED	BY
	NOTED	BY
	NOTED	BY
	NOTED	BY

PROFILE	SURVEYED	DATE
	NOTED	BY
	NOTED	BY
	NOTED	BY
	NOTED	BY



AS BUILT 2000
NE, NW, 12

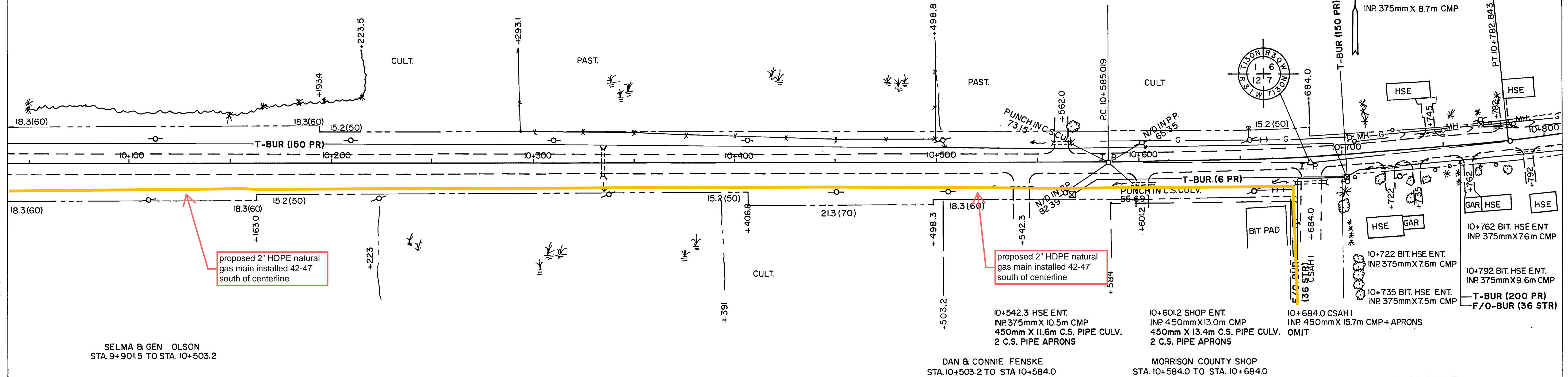
BM. ELEV. 360.280
SPK. IN GUY POLE
STA. 9+905 LT. 14.4m



10+334.9 CULV.
INP 900mmX13.7mCMP+APRONS
1110mm SPAN X 15.8m R.C. PIPE - ARCH CULV.
2 R.C. PIPE - ARCH APRONS (STD)

IO+562.0 HSE ENT.
INP.375mm X 7.9 m CMP+APRONS
375mm X 12.2m C.S. PIPE CULV.
2 C.S. PIPE APRONS

Pl. 10+684.037
 $\Delta = 6^{\circ} 29' 25'' \text{LT}$
 T = 99.018m
 L = 197.824m
 R = 1746.378m
 CH = 197.718m
 E = 2.805m



CONSTRUCT RIGHT TURN LANE
EXTEND GRADING P.I. OUT 2.1 M FOR A DIST. OF
145 M THEN A 1:15 TAPER FOR A DIST. OF 31 M
QUANTITY INCLUDED IN COMMON EXCAVATION

