

## COVERSHEET



42880

RUS Code:	W/O #:	428807
EXT 740 C:	WP #:	
Loan Nbr: BB8	LOC #:	76-000-08-02402
Loan Ywr: 2017	Name:	SUBSTATION-LASTRUP
AFF #:	(H) Phone #:	4680144
Elec:	(W) Phone #:	
RFCd:	(C) Phone #:	
By:	Acct #:	

City:	Staked By:	LUKE M KASELLA
Sec: 20	Date:	1/19/2018 9:13:27AM
Twp: 41	Signed By:	
Rg: 29	Date:	10/12/2017

Job Steps:	Tailgate Session
PPE Needed:	Work Procedures:
Source Control Verified/Size:	Job Hazards:
Personal Tools:	Equipment Needed:
Crew:	1-Shot/K-Fuse Size:
Comments:	Date:

Locate #:	Gopher State
	Date OK:

Comments 1:
Comments 2:
Comments 3:

Septic:	Row 1:	Rd Permit:	✓
Priv Elec:	Row 2:	Cty Permit:	
LP Line:	Line Ext \$	Fees:	
Sprinkler:	Backfill Comments:	TWP Permit:	
Final Grade:		State Permit:	
Brushing:		DNR Permit:	
Trees:		Joint Trench:	
Easements:		Notify TWP:	

Type of Device:	Size of Device:	Box/Switch #:
-----------------	-----------------	---------------

Reel ID:	Start Ftg:	End Ftg:
Reel ID:	Start Ftg:	End Ftg:
Reel ID:	Start Ftg:	End Ftg:

CONDUCTOR SUMMARY		
STATUS	CONDUCTOR	QTY (FT)
	PRIMARY	762
	PRIMARY	270
INSTALL	1/0 ACSR	97998
INSTALL	4 ACSR	416
	1/0 ACSR	723
	2 ACSR	307
	4 ACSR	76
RETIRE	1/0 ACSR	16001
RETIRE	2 ACSR	10529
RETIRE	4 ACSR	18616
INSTALL	1/0 TX	158



1.1	New	1196	1/0 ACSR
	New	1	40-5
	New	1	C5.71L 8' PUPIARM
	New	3	E1.3L
	New	1	E1.5
	New	3	E3-10
	New	3	F2.10
	New	1	H1.1
	New	1	L1.5
	New	1	L2.5
	New	1	S1.01 CØ-15T FUSE
	Ret	1	35-5
	Ret	598	4 ACSR
	Ret	1	A1.1

CHANGE TAP TO THE NORTH TO CØ

1.1

299'ABC

76-000-20-07601  
PLEASE CALL IN CORRECT

173rd St

RETIRE OCR 5050

1	Ext	1252	1/0 ACSR
	Ext	1	40-5
	Ext	1	C2.21P
	Ext	1	E1.1
	Ext	1	H1.1
	New	1	C2.51
	Ret	1	A5.3
	Ret	1	E1.5
	Ret	1	L1.5
	Ret	1	L2.5
	Ret	1	R1.1 5050
	Ret	1	S1.01

PHASING  
2 1 3  
W C E

1

183'ABC

76-000-28-09100  
17256 305TH AVE

2

233'ABC

2	Ext	1	F2.8
	Ext	1	G9-25 AØ-V9610
	New	732	1/0 ACSR
	New	1	35-5
	New	1	C1.11
	New	1	E1.1
	New	1	E3-10
	New	1	H1.1
	New	1	K1.5
	Ret	183	1/0 ACSR
	Ret	183	2 ACSR
	Ret	1	35-5
	Ret	1	A1.1
	Ret	1	E1.1
	Ret	1	E3-10
	Ret	1	H1.1
	Ret	1	K1.5

3

242'ABC

3	New	932	1/0 ACSR
	New	1	35-5
	New	1	C1.11
	New	1	H1.1
	Ret	233	1/0 ACSR
	Ret	233	2 ACSR
	Ret	1	35-5
	Ret	1	A1.1

4

264'ABC

4	New	968	1/0 ACSR
	New	1	35-5
	New	1	C1.11
	New	1	H1.1
	Ret	242	1/0 ACSR
	Ret	242	2 ACSR
	Ret	1	35-5
	Ret	1	A1.1

5

259'ABC

5	New	1056	1/0 ACSR
	New	1	35-5
	New	1	C1.11
	New	1	H1.1
	Ret	264	1/0 ACSR
	Ret	264	2 ACSR
	Ret	1	35-5
	Ret	1	A1.1



36.2  
 Ext 1 35-5  
 Ext 1 E1.1  
 Ext 1 F1.8  
 Ext 1 H1.1  
 Ext 1 E3-10  
 Ext 1 OWNER LOOP  
 New 87 1/0 TX  
 New 1 K15L  
 Ret 174 4 ACSR  
 Ret 1 A5.1  
 Ret 1 G10-10 9106A

36.1  
 Ext 1 35-5  
 Ext 1 H1.1  
 New 71 1/0 TX  
 New 1 K15L  
 Ret 290 1/0 ACSR  
 Ret 290 2 ACSR  
 Ret 1 A1.1  
 Ret 1 A5.1  
 Ret 1 E1.1  
 Ret 1 E3-10  
 Ret 1 F2.8

76-000-32-10601  
 15463 305TH AVE  
 36.2 87'A 71'A 36  
 36.1

36  
 33' CL  
 New 1132 1/0 ACSR  
 New 1 40-4  
 New 1 C1.11  
 New 1 E1.1  
 New 1 E3-10  
 New 1 F2.8  
 New 1 G9-15 AØ  
 New 1 H1.1  
 New 1 K15L

37  
 New 924 1/0 ACSR  
 New 1 40-4  
 New 1 C1.11  
 New 1 H1.1

113  
 Ret 230 1/0 ACSR  
 Ret 230 2 ACSR  
 Ret 1 35-5  
 Ret 1 A1.1

PHASING  
 W C E  
 2 1 3

39.1  
 53' CL  
 New 1076 1/0 ACSR  
 New 1 40-5  
 New 1 C5.71L 8' PUPI ARM  
 New 2 E1.3L  
 New 1 E1.5  
 New 3 E3-10  
 New 2 F2.10  
 New 1 F2.8  
 New 1 H1.1  
 New 1 L1.5  
 New 1 L2.5  
 New 1 R1.2 AØ 50H OCR  
 Ret 74 1/0 ACSR  
 Ret 74 2 ACSR

39.1  
 Ret 303 1/0 ACSR  
 Ret 303 2 ACSR  
 Ret 1 35-5  
 Ret 1 A2.1

114  
 Ret 237 1/0 ACSR  
 Ret 237 2 ACSR  
 Ret 1 35-5  
 Ret 1 A1.1

38  
 New 924 1/0 ACSR  
 New 1 40-5  
 New 1 C1.11  
 New 1 H1.1

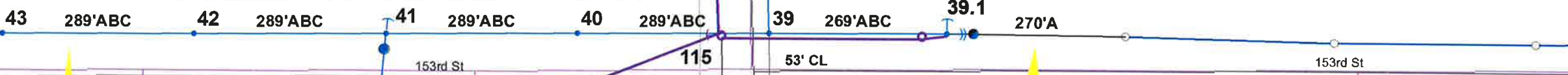
39  
 50' CL-C5.82G DRILL GUIDE  
 New 920 1/0 ACSR  
 New 1 45-4  
 New 1 C2.24  
 New 1 C5.71L 8' PUPI ARM  
 New 2 E1.4  
 New 1 H1.1

43  
 New 1156 1/0 ACSR  
 New 1 40-5  
 New 1 C1.11  
 New 1 H1.1

42  
 New 1156 1/0 ACSR  
 New 1 40-5  
 New 1 C1.11  
 New 1 H1.1

41  
 New 1156 1/0 ACSR  
 New 1 40-5  
 New 1 A5.3  
 New 1 C1.11  
 New 1 E1.1  
 New 1 E3-10  
 New 1 F2.8  
 New 1 H1.1  
 New 1 S1.01 CØ:15T FUSE

40  
 New 1156 1/0 ACSR  
 New 1 40-5  
 New 1 C2.24  
 New 1 H1.1



PHASING  
 N 2  
 C 1  
 S 3

41.1  
 Ext 1 35-5  
 Ext 1 G10-10 AT9121  
 Ext 1 H1.1  
 Ext 1 OWNER LOOP  
 New 416 4 ACSR  
 New 1 A5.1  
 New 1 E1.1  
 New 1 E3-10  
 New 1 F2.8  
 Ret 496 4 ACSR  
 Ret 1 A5.1  
 Ret 1 E1.1  
 Ret 1 E3-10  
 Ret 1 F2.8

80-000-12-01106  
 30377 153RD STREET

115.1  
 Ret 1 35-5  
 Ret 632 4 ACSR  
 Ret 1 A2.1

115  
 Ret 227 1/0 ACSR  
 Ret 227 2 ACSR  
 Ret 1 40-4  
 Ret 1 A5.1  
 Ret 1 A6.1  
 Ret 2 E1.1  
 Ret 1 E1.4  
 Ret 2 E3-10  
 Ret 2 F2.10  
 Ret 1 H1.1

39A  
 50' CL-OH GUY POLE  
 New 1 35-5  
 New 1 E3.1LG  
 New 3 E3-10  
 New 3 F2.10

115A  
 Ret 1 30-6  
 Ret 1 E1.1  
 Ret 1 F2.10

CHANGE LINE EAST TO 'A' PHASE  
 NEW 50H OCR

PHASING  
W C E  
2 1 3

CHANGE TAP WEST TO 'A' PHASE  
NEW 35H OCR

TAP EAST ON 'C' PHASE  
NEW 50H OCR



145
Ret 1 35-5
Ret 654 4 ACSR
Ret 1 A1.1

83
New 1292 1/0 ACSR
New 1 40-5
New 1 C1.11
New 1 H1.1

84.1
Ext 164 1/0 ACSR
Ext 1 35-5
Ext 1 A6.1
Ext 1 H1.1
New 82 1/0 ACSR NEUTRAL
New 1 E1.1
New 1 E3-10
New 1 F2.10
New 1 R1.1 AØ 35H OCR
Ret 82 2 ACSR NEUTRAL

84
32'-50' CL
New 1288 1/0 ACSR
New 1 40-5 SET 8' DEEP
New 1 A5.3
New 1 C2.24
New 1 E1.5
New 1 H1.1
New 1 L1.5
New 1 L2.5

87
Ext 488 1/0 ACSR
Ext 1 35-5
Ext 1 A6.1
Ext 1 H1.1
Ext 492 1/0 ACSR
New 1 R1.1 CØ 50H OCR

146
Ret 1 35-5
Ret 238 4 ACSR
Ret 1 A2.1

85
New 520 1/0 ACSR
New 1 35-5
New 1 C2.24
New 1 H1.1

86
New 1128 1/0 ACSR
New 1 40-5
New 1 C5.71L 8' PUPIARM
New 3 E1.3L
New 3 E3-10
New 3 F2.10
New 1 H1.1
Ret 586 4 ACSR
Ret 1 40-5
Ret 1 A1.1

TAP SOUTH ON 'B' PHASE

OCR B3508