

 1" = 5000'	Route PIERZ EAST	City Pierz	County Morrison	Filename PIERZ EAST ROUTE	Work Order # N.152214
	Signed By OSP 2/14/17	Drawn By MTR 2/2/17	Permit List	Prepared by  compass CONSULTANTS INC. 1400 W. 13th St. Pierz, MN 56571	
GSOC GOPHER STATE ONE CALL 1-800-252-1116 www.gopherstateonecall.org					
Overview					

Legend












Fiber Linetypes

-  Proposed Underground Fiber - Bore
-  Proposed Underground Fiber - Flow
-  Proposed UG Fiber in Existing Duct


Other Linetypes

-  RW - Right of Way
-  CL - Center Line

Other Utility Linetypes

-  Storm Sewer
-  Sanitary Sewer
-  Gas Line
-  Tele./Comm. Line
-  Water Line
-  Electric Line
-  Street light/Traffic signal
-  District Cooling
-  District Heating
-  Force Main
-  Other Utility or Unknown

Symbols

-  Proposed Handhole
-  Existing Handhole
-  Proposed Pad
-  Existing Pad
-  Proposed Node
-  Existing Node
-  Culvert
-  Manhole
-  Proposed Splice Point
-  Existing Splice Point

Abbreviations

- CL - Center Line
- R/W - Right of Way
- BOC - Back of Curb
- EOR - Edge of Road
- SMW - Sidewalk
- HH - Handhole
- MH - Manhole
- HDPE - High Density Polyethylene



1" = 100'

Route
PIERZ EAST

City
Pierz

County
Morrison

Filename
PIERZ EAST ROUTE

Work Order #
N.152214



TRACKING

Drawn By: 2/14/17
 OSP
 MTR 2/2/17

Permit List

Prepared By:  **compass**
 CONSULTANTS, INC.
 1400 W. 11th St.
 Fort Collins, CO 80504

GSOC
 GOPHER STATE ONE CALL
 1-800-252-1116
 www.gopherstateonecall.org

Legend



E-8

E-9.1

E-10

TRACKING

Signed By: 2/14/17
OSR

Drafted By: 2/2/17
MRT

Permit List

MORRISON COUNTY 29
MORRISON COUNTY 23

1" = 100'

Route: PIERZ EAST
City: Pierz
County: Morrison
Firmname: PIERZ EAST ROUTE
Work Order #: N.152214

Prepared By: **compass**
Morrison, MN 55360-5300
Tel: 763.293.3333

GSOC
GOPHER STATE ONE CALL
1-800-252-1116
www.gopherstateonecall.org

E-9



E-9

E-9.2



1" = 100'

Route	PIERZ EAST
City	Pierz
County	Morrison
Parish/precinct	PIERZ EAST ROUTE
Work Order #	N.152214



TRACKING
 Served By: 2/14/17
 OSP:
 Drawn By:

Permit List
 MORRISON COUNTY 23

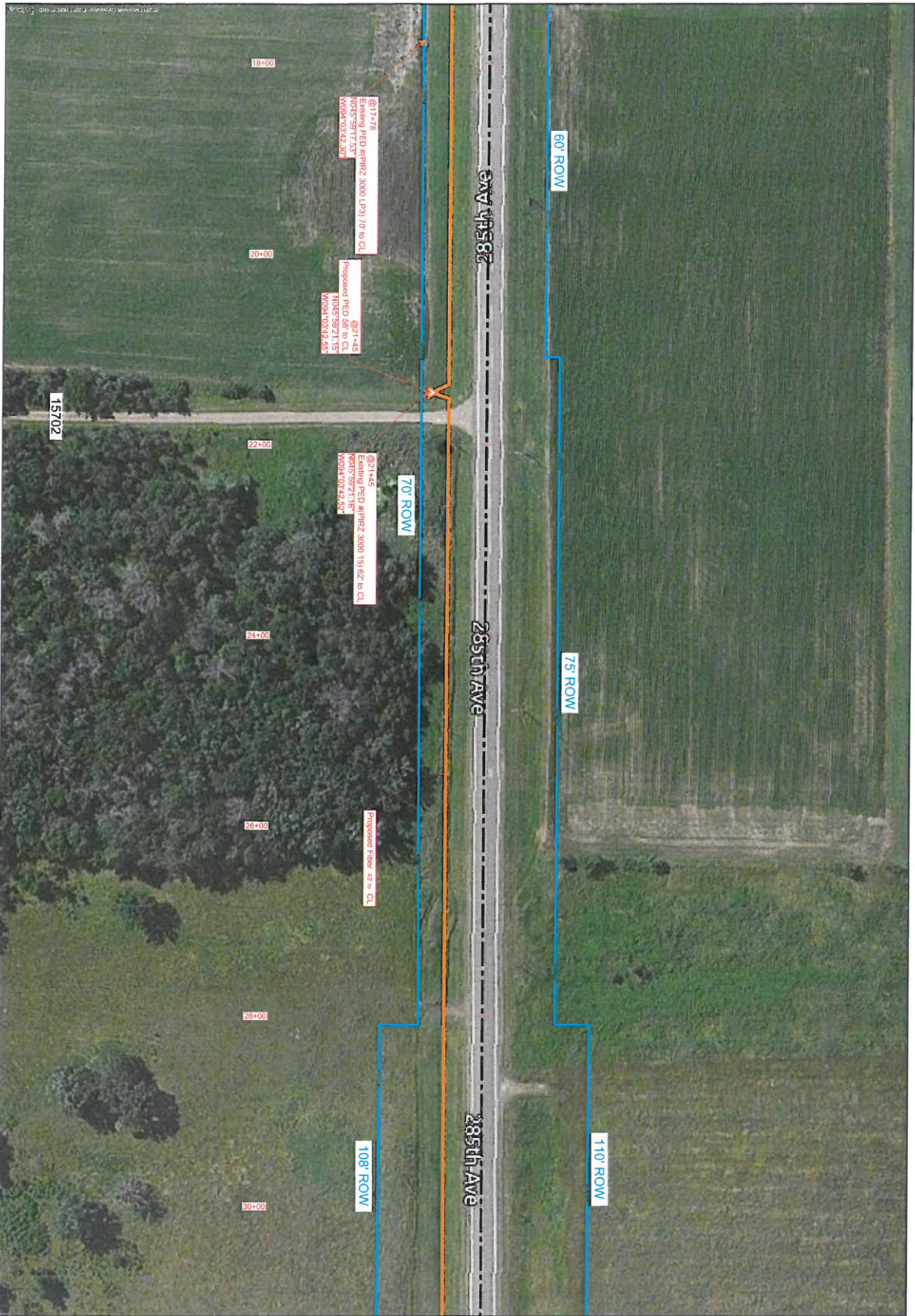
Prepared by:



GSOC
 GOPHER STATE ONE CALL
 1-800-252-1116
 www.gopherstateoncall.org

Permit No. N.152214-100
 N.152214-100

E-9.1



E-9.1

E-9.3



1" = 100'

Route	PIERZ EAST
City	Pierz
County	Morrison
File Name	PIERZ EAST ROUTE
Work Order #	N.152214



TRACKING

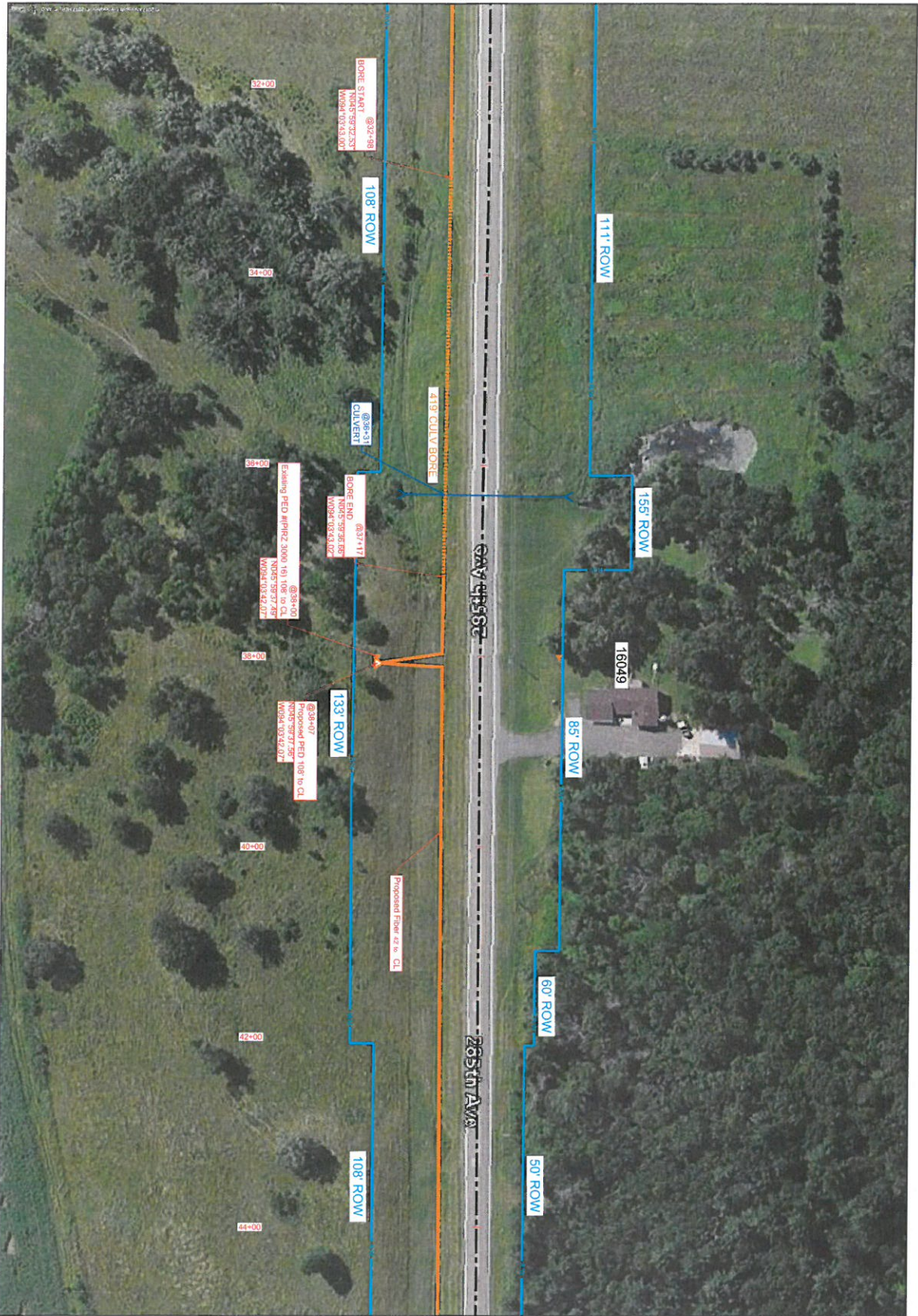
Signed By: [Signature]
 Date: 2/14/17

Permit List
 MORRISON COUNTY 23

GSOC
 GOPIER STATE ONE CALL
 1-800-252-1116
 www.gopherstateonecall.org

Prepared by:
compass
 CONSULTANTS, INC.
 PIERZ, MN 56154-3600
 1-800-252-1116

E-9.2



E-9.2

E-9.3



1" = 100'


Route	PIERZ EAST
City	Pierz
County	Morrison
Filename	PIERZ EAST ROUTE
Work Order #	N.152214



Survey By: 2/14/17
 Drawn By:

Permit List
 MORRISON COUNTY 23

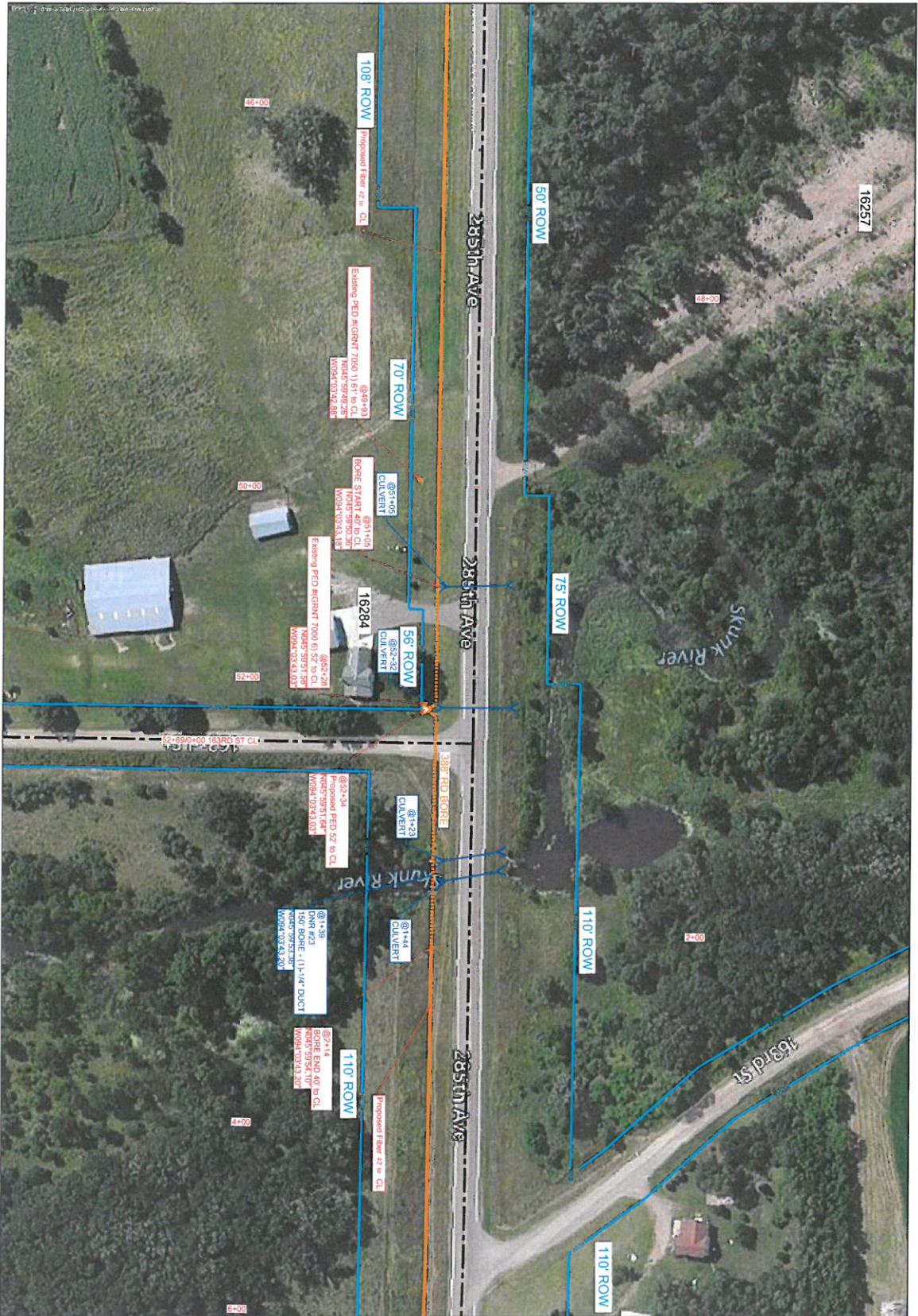
Prepared by:




GSOC
 GOPHER STATE ONE CALL
 1-800-252-1116
 www.gopherstateonecall.org


Pennell, MN 218.946-3000
 1-800-252-1116

E-9.3





1" = 100'



Route	PIERZ EAST
City	Pierz
County	Morrison
Filename	PIERZ EAST ROUTE
Work Order #	N.152214

Served By	Z/14/17
CSR	
Drawn By:	
Permit List	
MORRISON COUNTY 23	
DNR	

GSOC
GOPHER STATE ONE CALL
1-800-252-1116
www.gopherstateonecall.org

Prepared by
compass
consultants, inc.
Pierz, MN 56158-3600
1-800-352-3333

E-9.4



E-9.4

E-9.6



1" = 100'

Route	PIERZ EAST
City	Pierz
County	Morrison
Parish	PIERZ EAST ROUTE
Work Order #	N.152214



TRACKING

Survey By: 2/14/17
 Drawn By: .

Permit List

MORRISON COUNTY 23

GSOC
 GOPHER STATE ONE CALL
 1-800-252-1116
 www.gopherstateonecall.org

Prepared by:
compass
 CONSULTANTS, INC.
 PIERZ, MN 55955-3000
 TEL: 507.335.2200

E-9.5



1" = 100'

Route	PIERZ EAST
City	Pierz
County	Morrison
Filename	PIERZ EAST ROUTE
Work Order #	N.152214

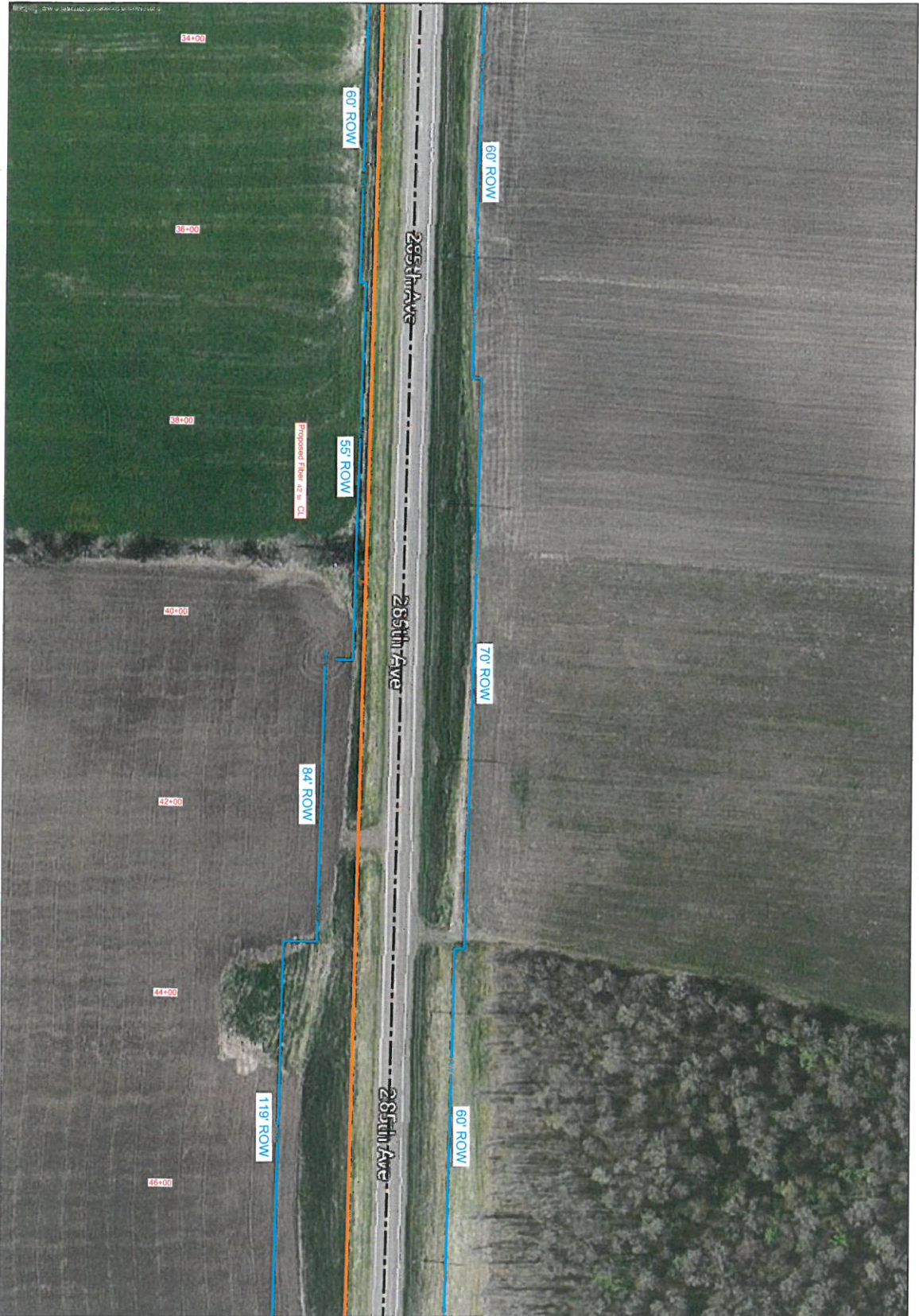


Signed By	2/14/17
Checked By	
Permit List	
MORRISON COUNTY 23	

GSOC
 GOPHER STATE ONE CALL
 1-800-252-1116
 www.gopherstateonecall.org

Prepared by:
compass
 CONSULTANTS INC.
 PIERZ, MN 55134-56-300
 (612) 252-1116

E-9.6



1" = 100'

Route	PIERZ EAST
City	Pierz
County	Morrison
Parasite	PIERZ EAST ROUTE
Work Order #	N.15214



Drawn By: 2/14/17
 OSP: -
 Checked By: -

Permit List
 MORRISON COUNTY 23

GSOC
 GOPHER STATE ONE CALL
 1-800-252-1116
 www.gopherstateonecall.org

Prepared by:
compass
 CONSULTANTS, INC.
 PIERZ, MN 56158-3500
 PHONE: 507.735.3500
 FAX: 507.735.3500

E-9-7



1" = 100'

Route	PIERZ EAST
City	Pierz
County	Morrison
Filename	PIERZ EAST ROUTE
Work Order #	N.19214



TRACKING

Survey By: OSP 2/14/17
Drawn By:

Permit List
MORRISON COUNTY 23

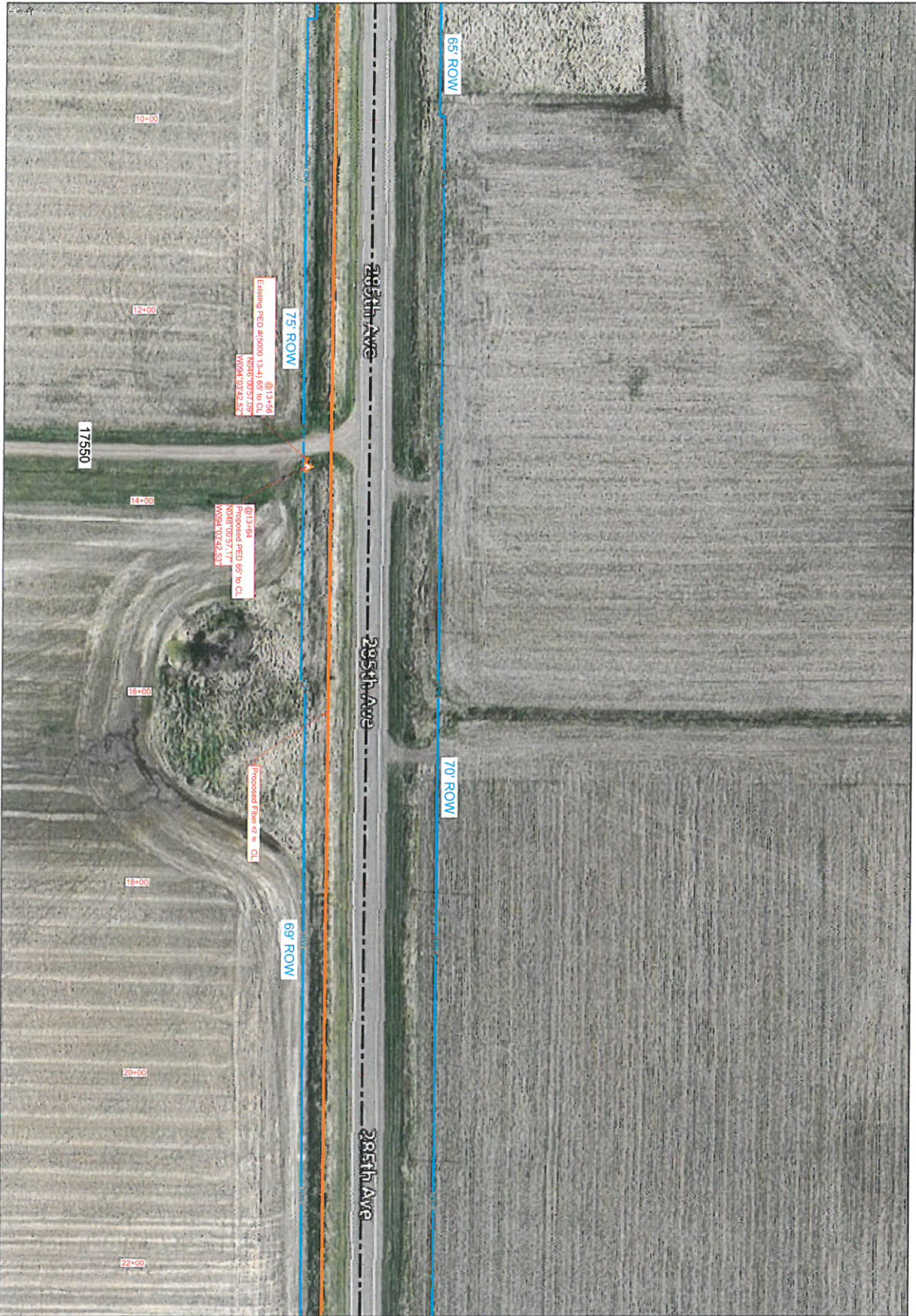
Prepared by:



GSOC
GOPHER STATE ONE CALL
1-800-252-1116
www.gopherstateonecall.org

Penn. Reg. No. 213, 346, 300
Toll-Free: 1-800-252-1116

E-9.8



E-9.10



1" = 100'

Route	PIERZ EAST
City	Pierz
County	Morrison
File Name	PIERZ EAST ROUTE
Work Order #	N.152214



TRACKING

Signed By: DSP 2/14/17

Checked By: -

Permit List

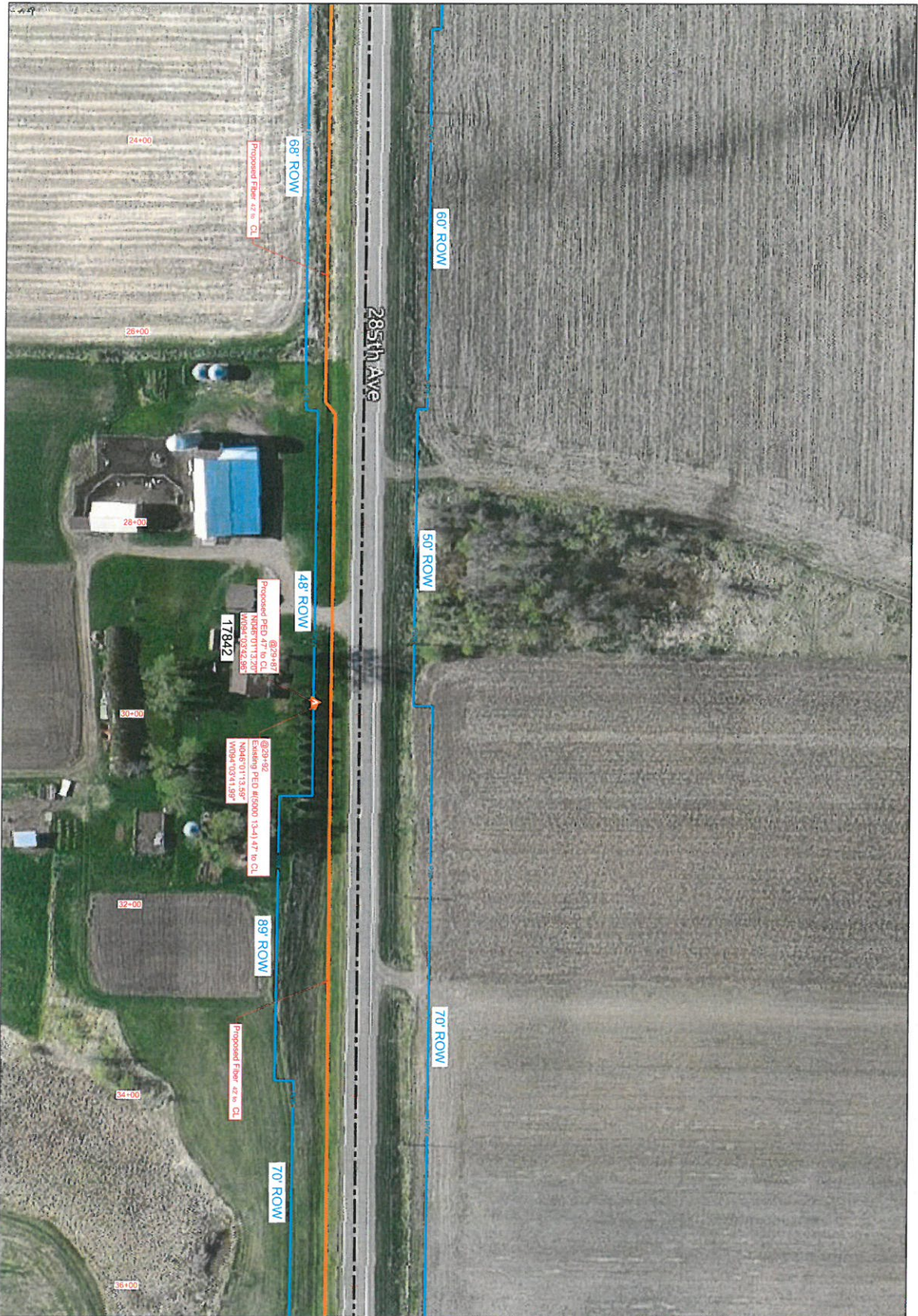
MORRISON COUNTY 23

Prepared by:

GSOC
 GOPHER STATE ONE CALL
 1-800-252-1116
 www.gopherstateonecall.org

Permit No. MW 17345-300
 12/22/2016

E-9.9



1" = 100'

Route
PIERZ EAST

City
Pierz

County
Morrison

Transmittal
PIERZ EAST ROUTE

Work Order #
N.152214



TRACKING

Saved By:
OSR 2/14/17

Drawn By:

Permit List

MORRISON COUNTY 23

Prepared by:



compass
consultants, inc.
Pierz, MN 56158-3800
Tel: 507-251-1300

E-9.10

GSOC

GOPHER STATE ONE CALL
1-800-252-1116
www.gopherstateonecall.org



1" = 100'

Route
PIERZ EAST

City
Piez

County
Morrison

File Name
PIERZ EAST ROUTE

Work Order #
N.152214



TRACKING

Started By: 2/14/17

Op: 2/14/17

Created By:

Permit List

MORRISON COUNTY 23

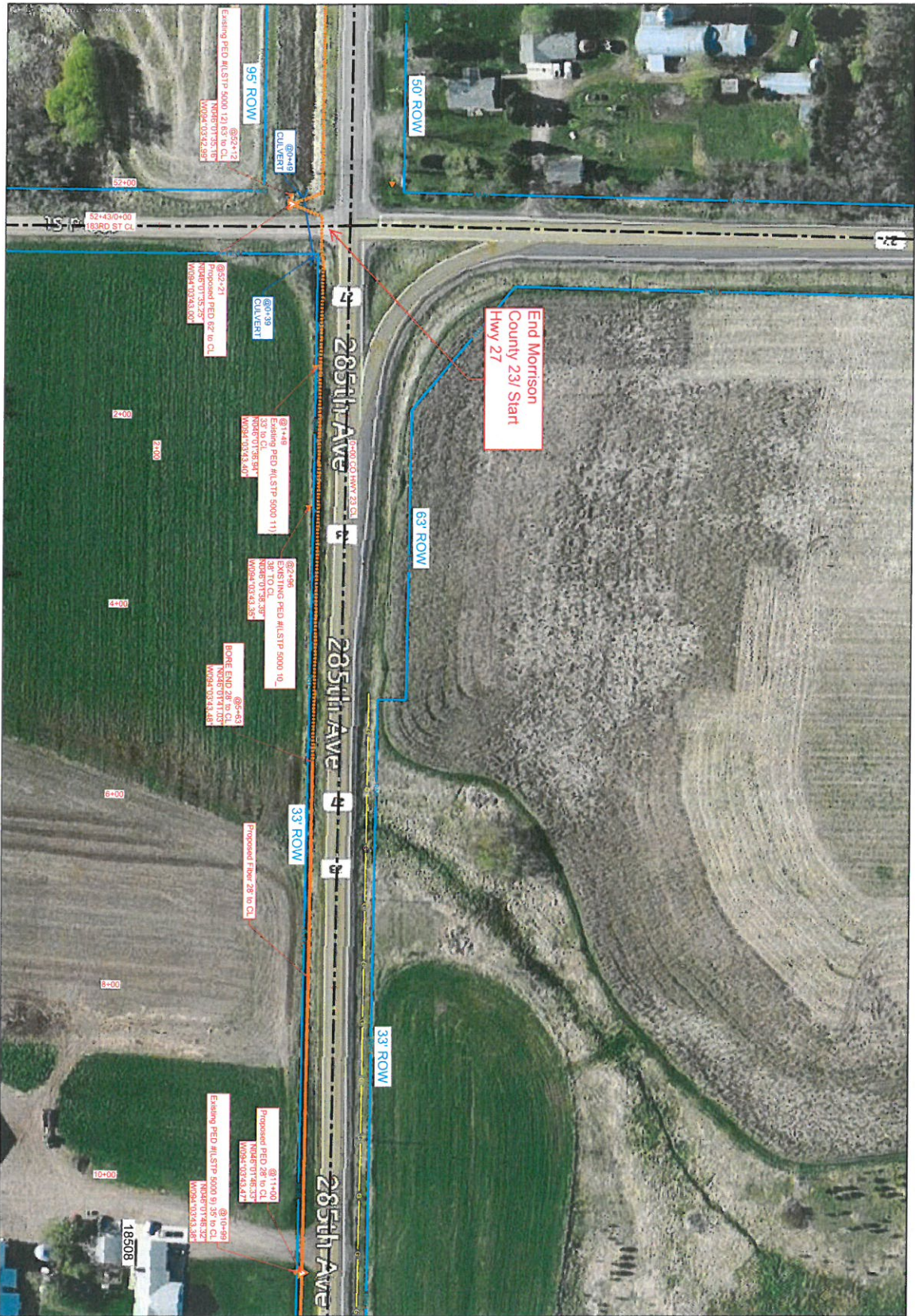
Prepared by:



E-9.11

GSOC

GOPHER STATE ONE CALL
1-800-252-1116
www.gopherstateonecall.org



1" = 100'

Route	PIERZ EAST
City	Pierz
County	Morrison
Filename	PIERZ EAST ROUTE
Work Order #	N.152214



TRACKING

Signed By: [Signature]
 Date: 2/14/17

Permit List
 NAD07 27
 MORRISON COUNTY 23

GSOC
 GOPHER STATE ONE CALL
 1-800-252-1116
 www.gopherstateonecall.org

Prepared by:
compass
 CONSULTANTS INC.
 PIERZ, MN 56158-9630
 507-735-2222

E-9.12



NOTES:

*New Midnode on post mounted next to existing ped# (LSTP 5000 15)

Equipment Install Type: Cool Ped: Post: Existing Cabinet:

Address: NE Corner of Intersection of 173rd St (Co Rd 267) & 285th Ave (Co Rd (23))

Power Company: Minnesota Power

Prepared By:	MJS	Lat / Long:	SEC	19	Node Plan
COMPASS CONSULTANTS, INC.		N046°00'44.26"	TWP	41N	
Trust.com		W094°03'42.46"	RANGE	29W	
Date:	3/18/17	SW 1/4 of SW 1/4	COUNTY	Morrison	Pierz - Node #25 N.191136