



 1" = 5000'

Route	PIERZ EAST
City	Pierz
County	Morrison
Filename	PIERZ EAST ROUTE
Work Order #	N.15214



TRACKING
 Started By: 214417
 OSP: 214417
 Created By: 22117
 MTR: 22117
 Permit List

Prepared by:


GSOC
 GOPHER STATE ONE CALL
 1-800-252-1116
 www.gopherstateonecall.org

PIERZ, MN 56578-3000
 1-800-252-1116
 www.gopherstateonecall.org

OVERVIEW

Legend












Fiber Linetypes

-  Proposed Underground Fiber - Bore
-  Proposed Underground Fiber - Plow
-  Proposed UG Fiber in Existing Duct










Other Linetypes

-  RW - Right of Way
-  CL - Center Line

Other Utility Linetypes

-  Storm Sewer
-  Sanitary Sewer
-  Gas Line
-  Tele./Comm. Line
-  Water Line
-  Electric Line
-  Street Light/Traffic signal
-  District Cooling
-  District Heating
-  Force Main
-  Other Utility or Unknown

Symbols

-  Proposed Handhole
-  Existing Handhole
-  Proposed Ped
-  Existing Ped
-  Proposed Node
-  Existing Node
-  Manhole
-  Proposed Splice Point
-  Existing Splice Point

Abbreviations

- CL - Center Line
- RW - Right of Way
- BOC - Back of Curb
- EOR - Edge of Road
- SMW - Sidewalk
- HH - Handhole
- MH - Manhole
- HDPE - High Density Polyethylene



1" = 100'

Route
PIERZ EAST
City
Pierz
County
Morrison
Firmname
PIERZ EAST ROUTE
Work Order #
N.152214



TRACKING
Sawed By
OSP 2/14/17
Drafted By
MRT 2/21/17
Permit List

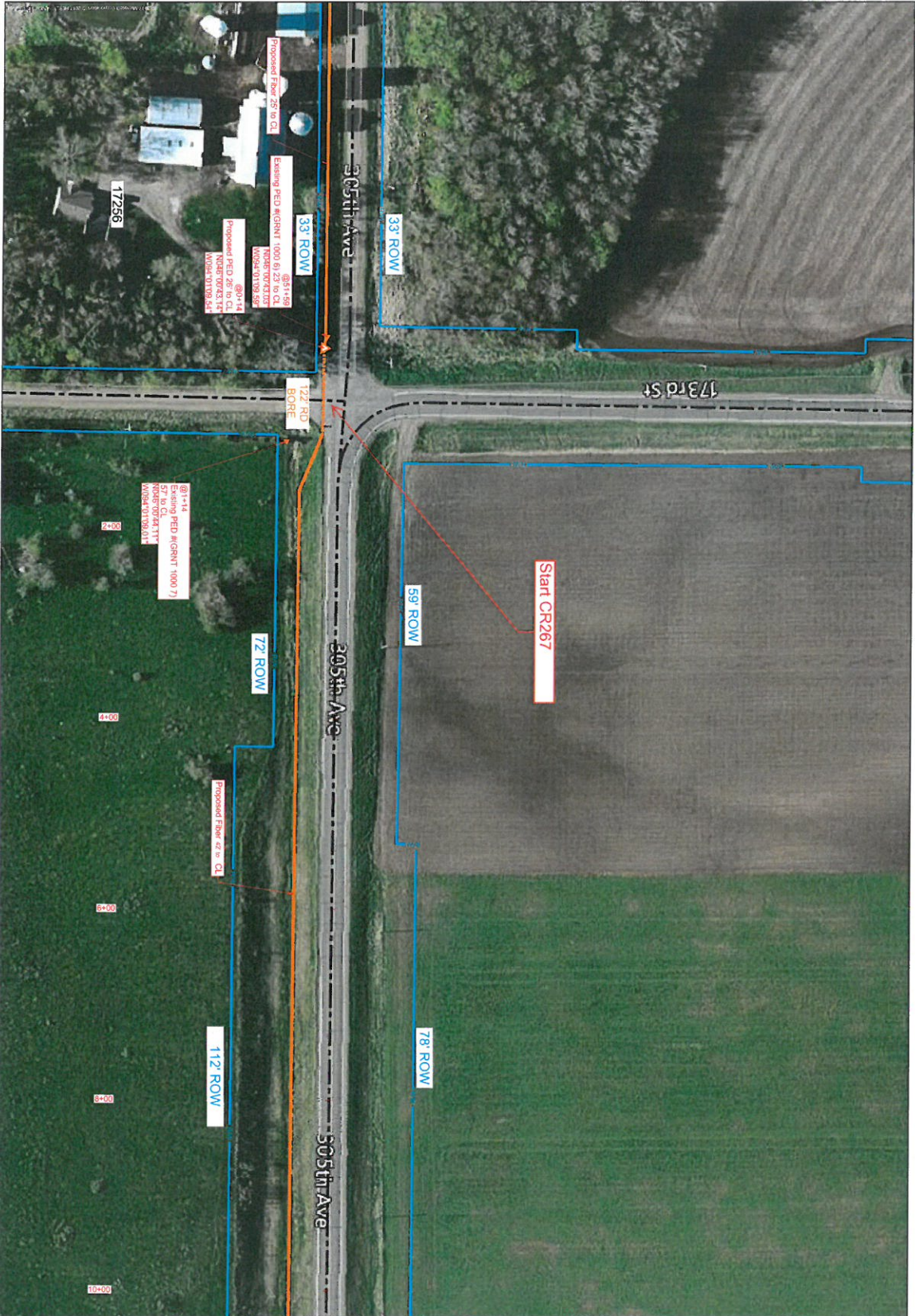
GSOC
GOPHER STATE ONE CALL
1-800-252-1116
www.gopherstateonecall.org

Prepared by

Fisher, M.D. 213.346.5300
T.M.D. 213.346.5300

Legend

E-17.7



E-17.9



1" = 100'

Route	PIERZ EAST
City	Pierz
County	Morrison
Filename	PIERZ EAST ROUTE
Work Order #	N.152214



TRACKING

Drawn By: OSR 2/14/17

Permit List

GRANITE TWP 305TH AVE 333 MORRISON COUNTY 287

GSOC
 GOPHER STATE ONE CALL
 1-800-252-1116
 www.gopherstateonecall.org

Prepared by:
compass
 CONSULTANTS INC.
 1400 W. 13th St.
 Moorhead, MN 56501

E-17.8



TRACKING

Served By: OSP 214117

Prepared By: **Permit List**

MORRISON COUNTY 267
DNK

CenturyLink

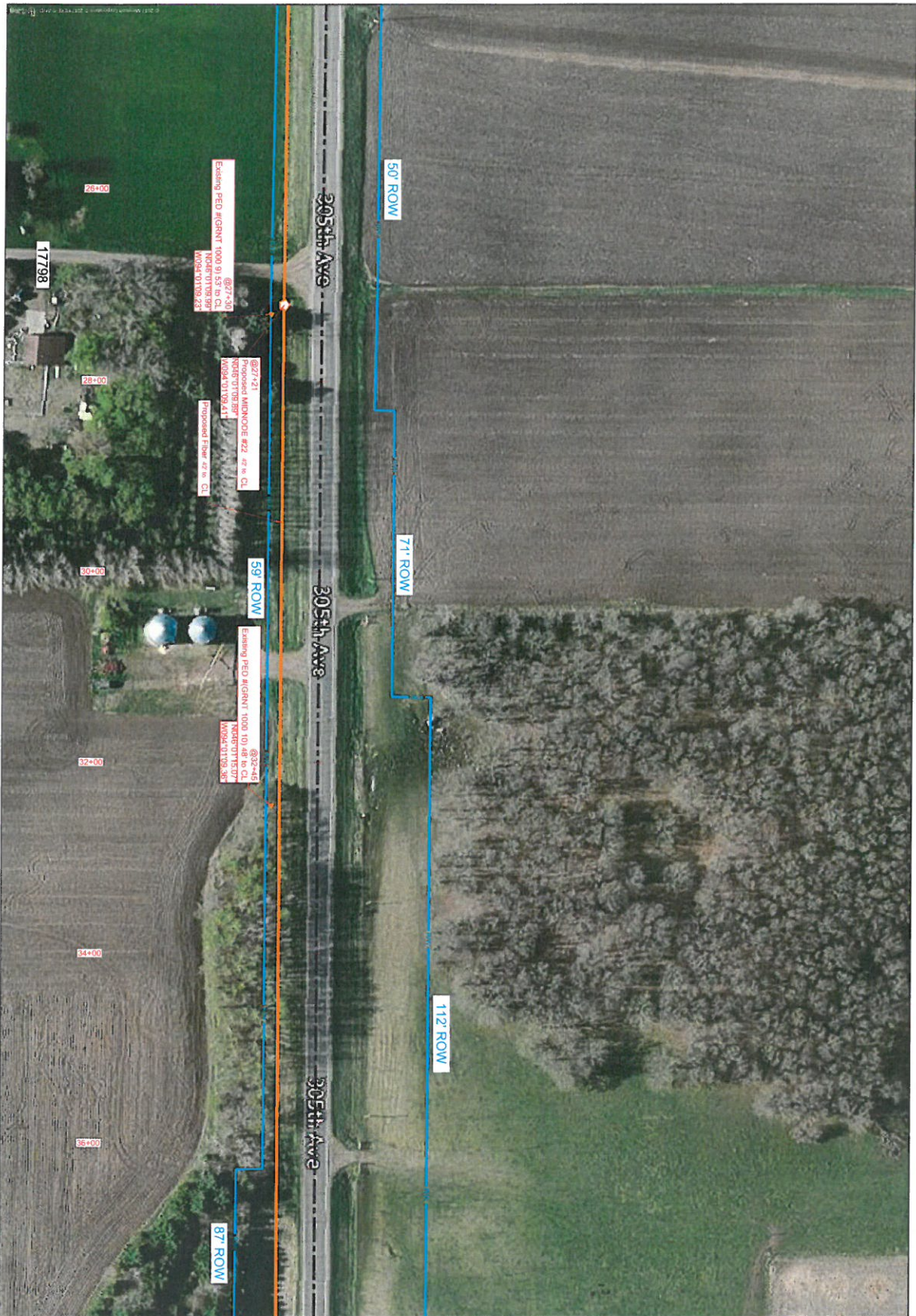
Route: PIERZ EAST
 City: Pierz
 County: Morrison
 Filename: PIERZ EAST ROUTE
 Work Order #: N.152214

1" = 100'




Prepared By: **compass**
 PIERZ, MN 56583-5800
 1-800-252-1116
 www.gopherstateonlinecall.com

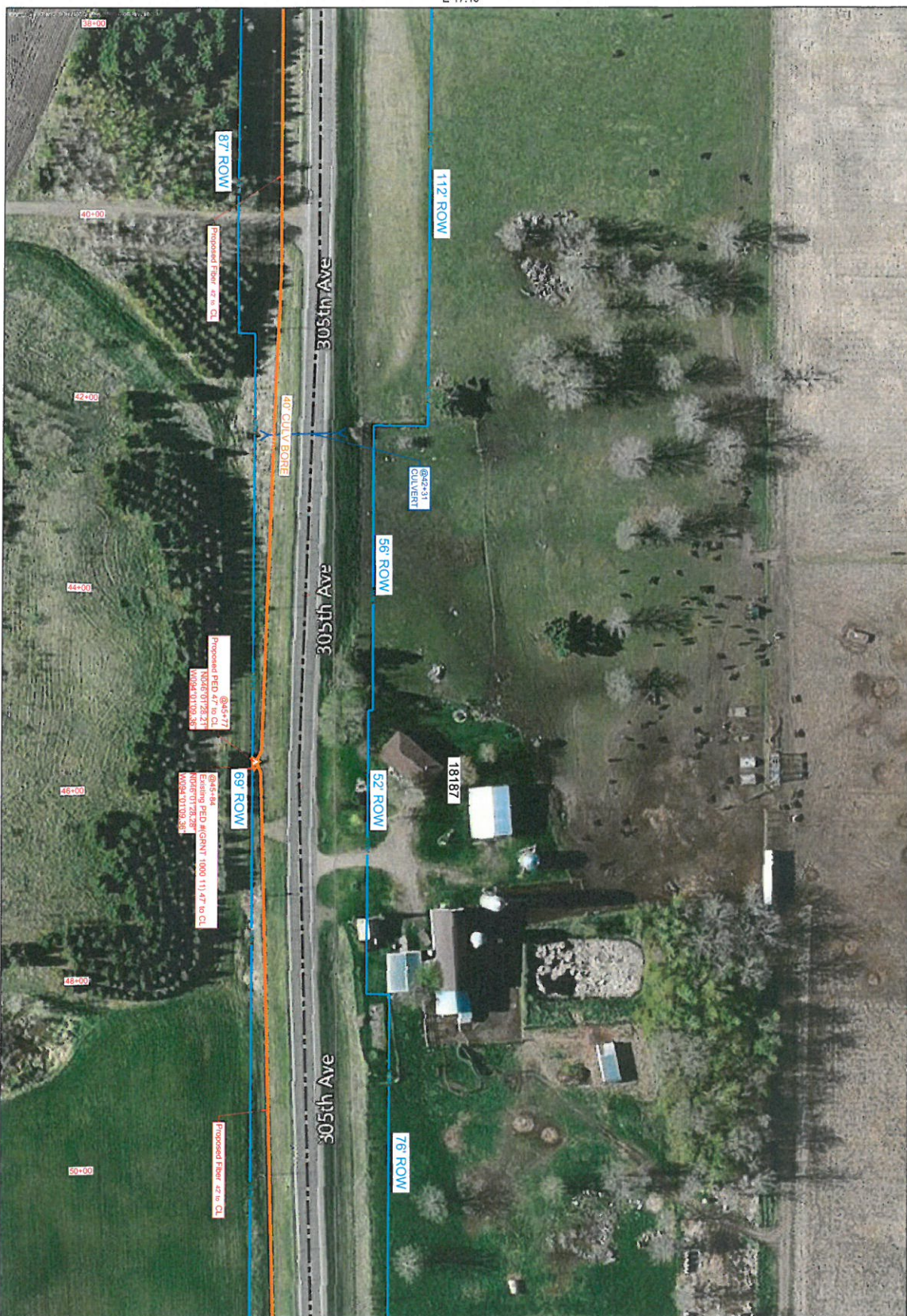
GSOC
 GOPHER STATE ONE CALL


E-17.9



E-17.11

 1" = 100'	Route PIERZ EAST
	City Pierz
County Morrison	Filename PIERZ EAST ROUTE
Work Order # N.19214	Prepared By COMPASS CONSULTANTS INC.
	Signed By OSP 2/14/17
TRACKING	Drawn By
Permit List	MORRISON COUNTY 287
Prepared By  COMPASS CONSULTANTS INC. PIERZ, MN 55955-3000 1-800-252-1116 www.gopherstateonecall.org	Gopher State One Call 1-800-252-1116 www.gopherstateonecall.org





1" = 100'


Route
PIERZ EAST

City
Pierz

County
Morrison

File Name
PIERZ EAST ROUTE

Work Order #
N.152214



CenturyLink


TRACKING

Signed By
OSR

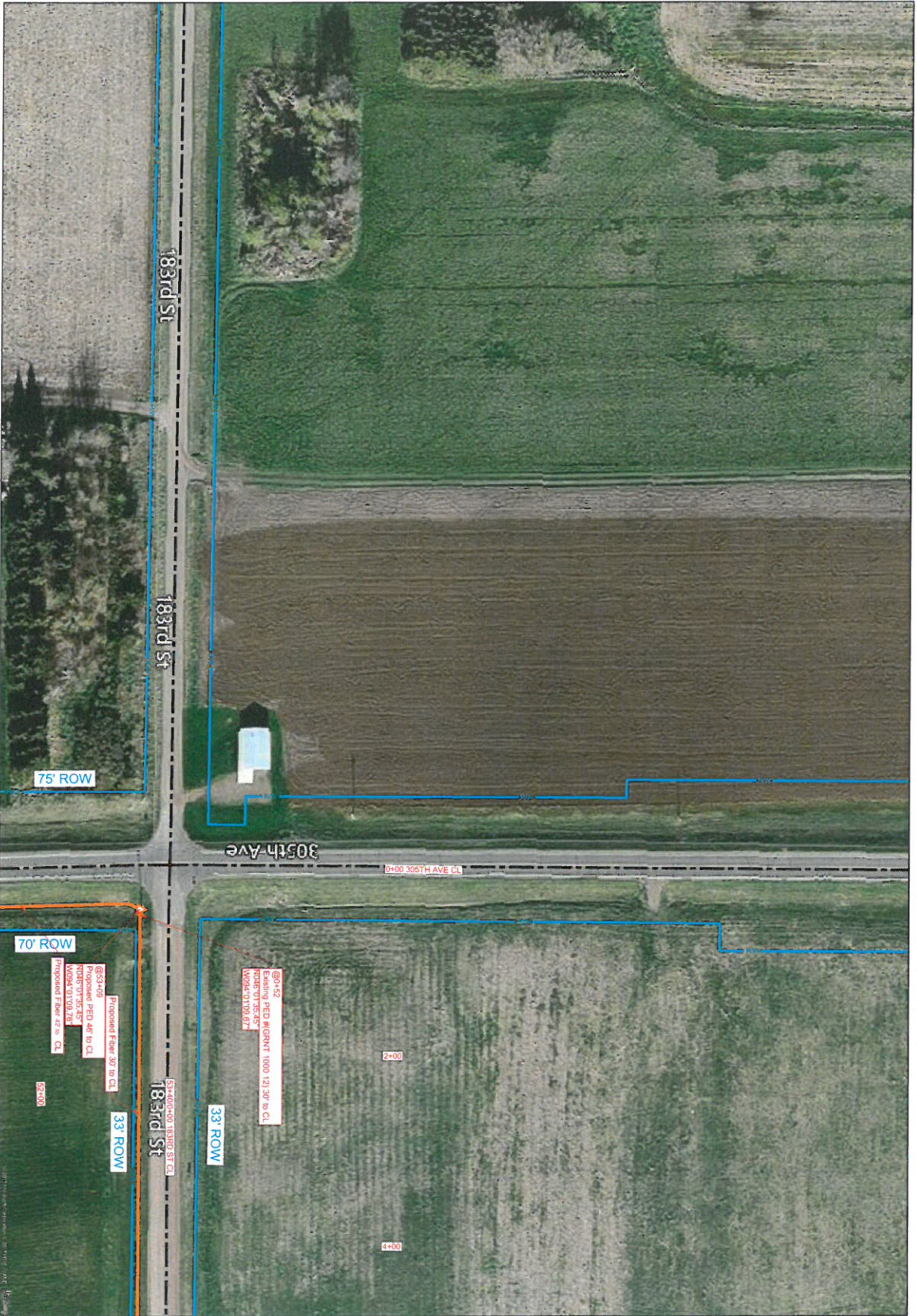
Created By
-

Permit List

MORRISON COUNTY 287

Prepared by:
 **compass**
CONSULTANTS INC.
1500 W. 135th Street
Trenton, MO 64683

GSOC
GOPHER STATE ONE CALL
1-800-252-1118
www.gopherstateonecall.org



E-17.11

E-13



1" = 100'

Route	PIERZ EAST
City	Pierz
County	Morrison
Filename	PIERZ EAST ROUTE
Work Order #	N.152214



TRACKING

Signed By	OSP	2/14/17
Drafted By	MRT	2/21/17

Permit List	MORRISON COUNTY 267 MORRISON COUNTY 268
-------------	--

GSOC
GOPHER STATE ONE CALL
1-800-252-1116
www.gopherstateonecall.org



E-17.12