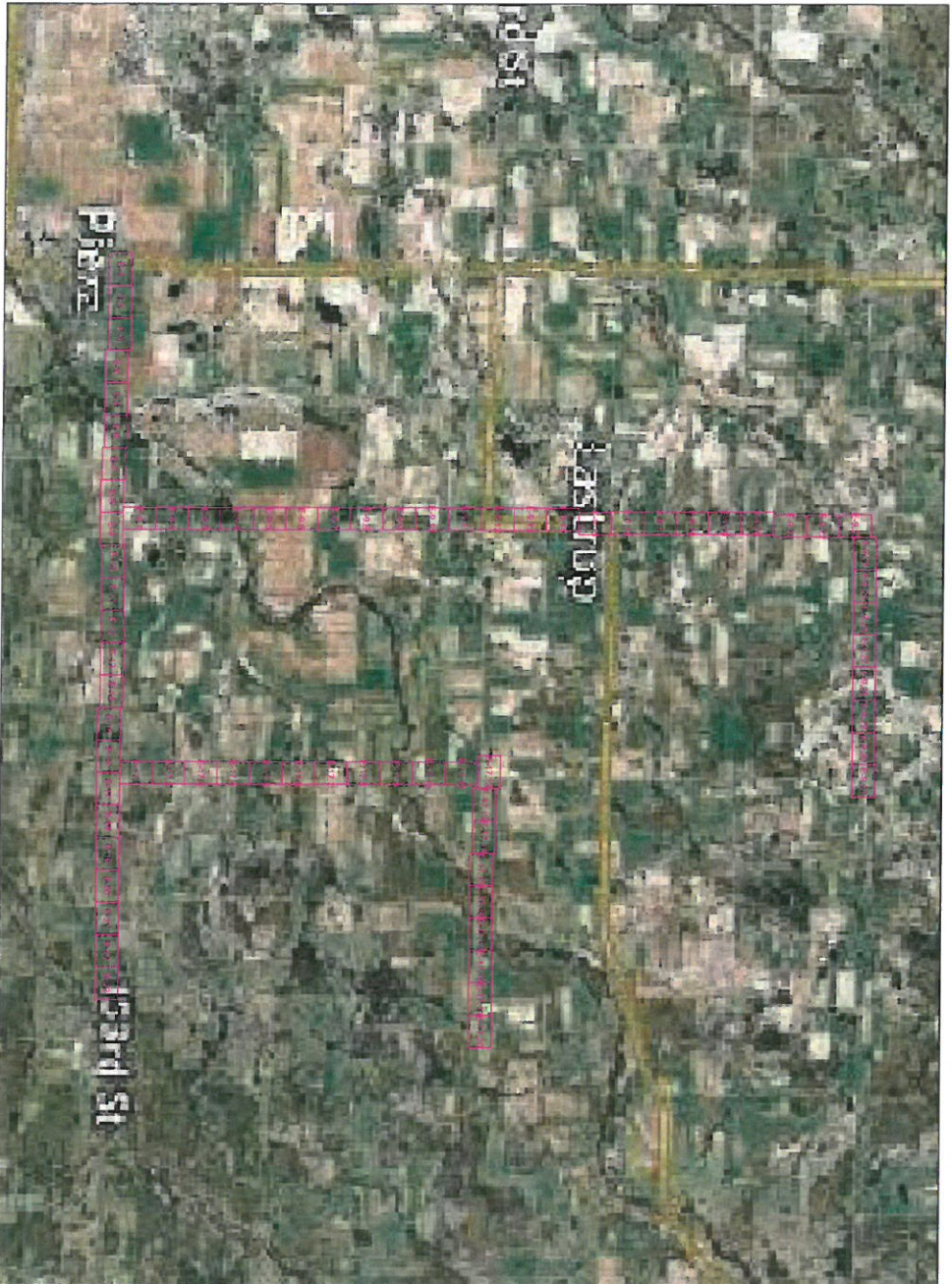


Pierz East Route



1" = 5000'

Route	PIERZ EAST
City	Pierz
County	Morrison
Traverse	PIERZ EAST ROUTE
Work Order #	N.152214



Survey By	2/4/17
OSP	22/17
Drawn By	
MKT	
Permit List	

GSOC
 GOPHER STATE ONE CALL
 1-800-252-1116
 www.gopherstateonecall.org

Prepared by:

 Compass Consultants Inc.
 Pierz, MN 56478-3600
 1-800-252-1116
 www.gopherstateonecall.org

Overview

Legend












Fiber Linetypes

-  Proposed Underground Fiber - Bore
-  Proposed Underground Fiber - Flow
-  Proposed UG Fiber in Existing Duct




Other Linetypes

-  R/W - Right of Way
-  CL - Center Line

Other Utility Linetypes

-  Storm Sewer
-  Sanitary Sewer
-  Gas Line
-  Tele./Comm. Line
-  Water Line
-  Electric Line
-  Street light/Traffic signal
-  District Cooling
-  District Heating
-  Force Main
-  Other Utility or Unknown

Symbols

-  Proposed Handhole
-  Existing Handhole
-  Proposed Ped
-  Existing Ped
-  Proposed Node
-  Existing Node
-  Culvert
-  Manhole
-  Proposed Splice Point
-  Existing Splice Point

Abbreviations

- CL - Center Line
- R/W - Right of Way
- BOC - Back of Curb
- EOR - Edge of Road
- S/W - Sidewalk
- HH - Handhole
- MH - Manhole
- HDPE - High Density Polyethylene



1" = 100'

Route
PIERZ EAST

City
Pierz

County
Morrison

Parish
PIERZ EAST ROUTE

Work Order #
N.152214



TRACKING

Issued By: 2/14/17
 Quer: 2/14/17
 Drawn By: 2/21/17
 WKT

Permit List

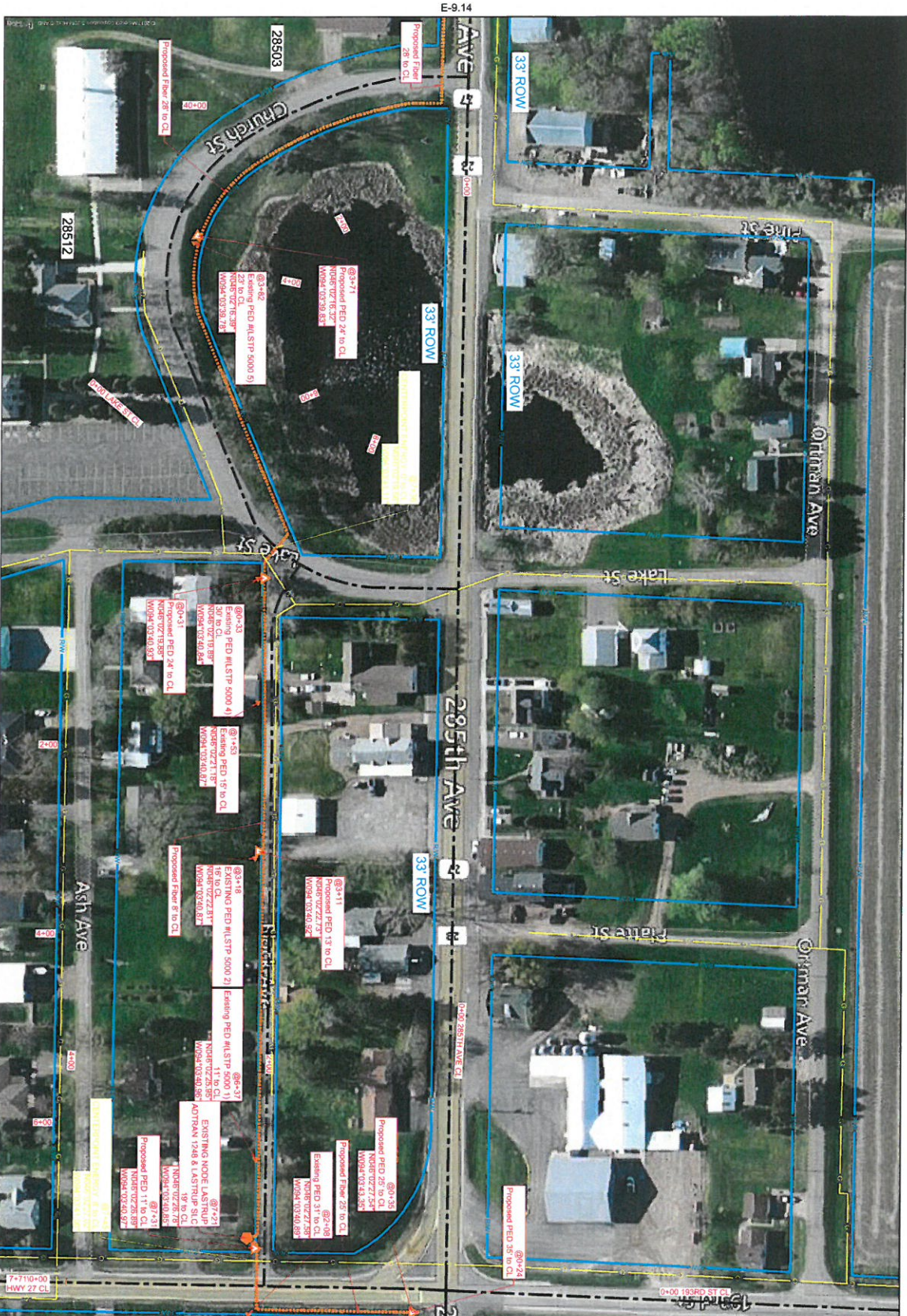
Prepared By:

 compass
 consultants, inc.
 1400 S. 10th St.
 Pierre, SD 57501-3000
 605.773.2222

Legend

GSOC

GOPHER STATE ONE CALL
 1-800-252-1116
 www.gopherstateonecall.org



E-9.14

E-9.16



1" = 100'

Route	PIERZ EAST
City	Pierz
County	Morrison
Filename	PIERZ EAST ROUTE
Work Order #	N.15214



TRACKING
 Served By: 2/14/17
 OSP:
 Ordered By:

Permit List
 WNDOT 27
 CITY OF LASTRUP
 CENTERLINE ENERGY

Prepared by:



GSOC
 GOPHER STATE ONE CALL
 1-800-252-1116
 www.gopherstateonecall.org

Faxline: MN 133-346-300
 13333333333

E-9.15



Route
PIERZ EAST

City
Pierz

County
Morrison

Traverse
PIERZ EAST ROUTE

Work Order #
N 152214



TRACKING

Skewed By:
OSR 2/14/17

Drawn By:

Permit List

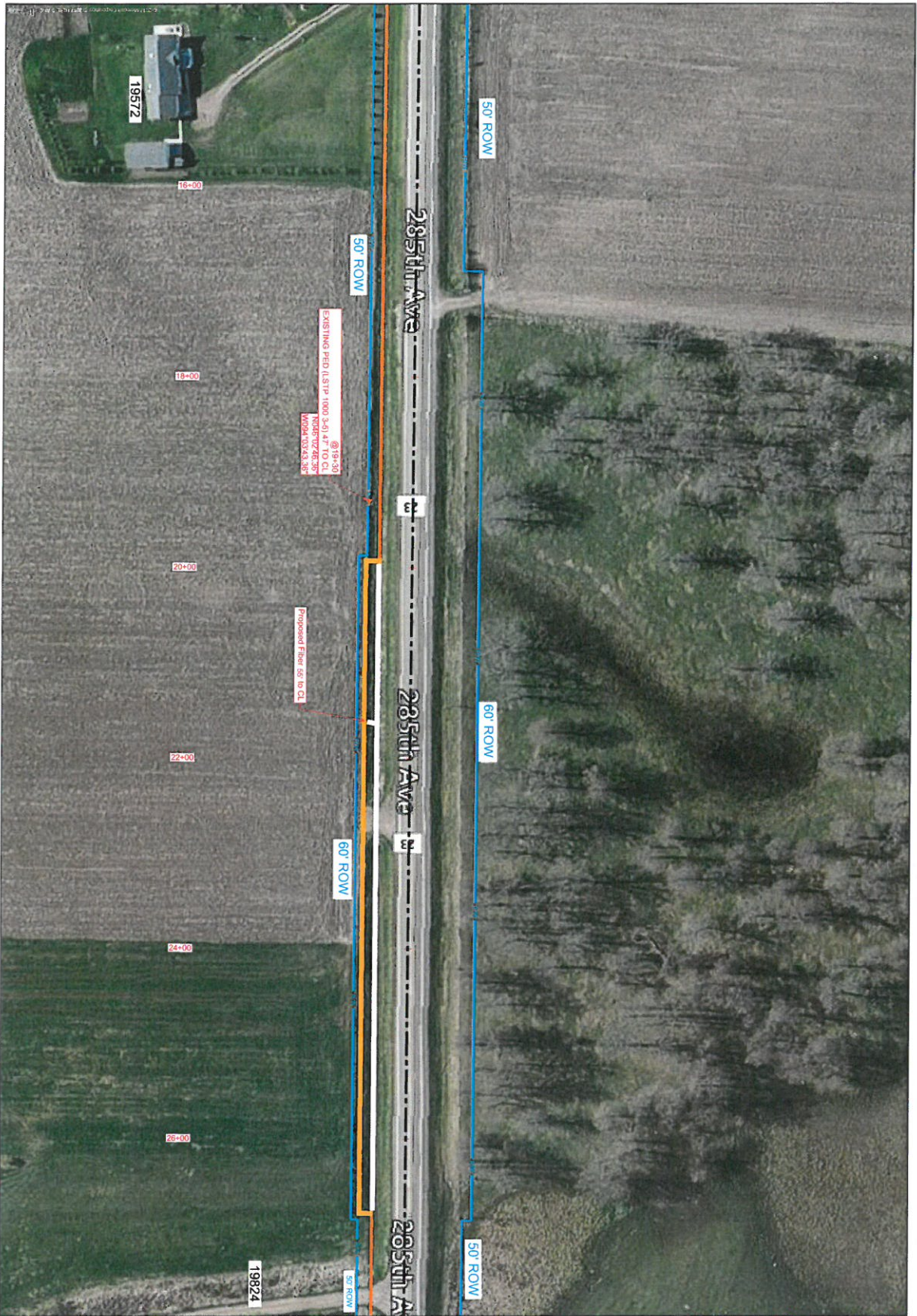
MORRISON COUNTY 23

GSOC
GOPHER STATE ONE CALL
1-800-252-1116
www.gopherstateonecall.org

Prepared by:
compass
consultants inc.
Pierz, MN 55936-3400
Track@compass.com

E-9.16

E-9.16



E-9.18



1" = 100'

Route	PIERZ EAST
City	Pierz
County	Morrison
Traverse	PIERZ EAST ROUTE
Work Order #	N.152214



TRACKING

Survey By: 2/14/17
 Drawn By: [blank]
 Permit List

MORRISON COUNTY 23

Prepared by:

GSOC
 GOPHER STATE ONE CALL
 1-800-252-1116
 www.gopherstateonecall.org

E-9.17

E-9.17



E-9.19



1" = 100'

Route	PIERZ EAST
City	Pierz
County	Morrison
Filename	PIERZ EAST ROUTE
Work Order #	N.152214



TRACKING

Drawn By: ZH/117
 Date: 2/14/17

Permit List

MORRISON COUNTY 23



Prepared by:
GSOC
 GOPHER STATE ONE CALL
 1-800-252-1116
 www.gopherstateonecall.org

E-9.18



1" = 100'

Route	PIERZ EAST
City	Pierz
County	Morrison
File Name	PIERZ EAST ROUTE
Work Order #	N.152214



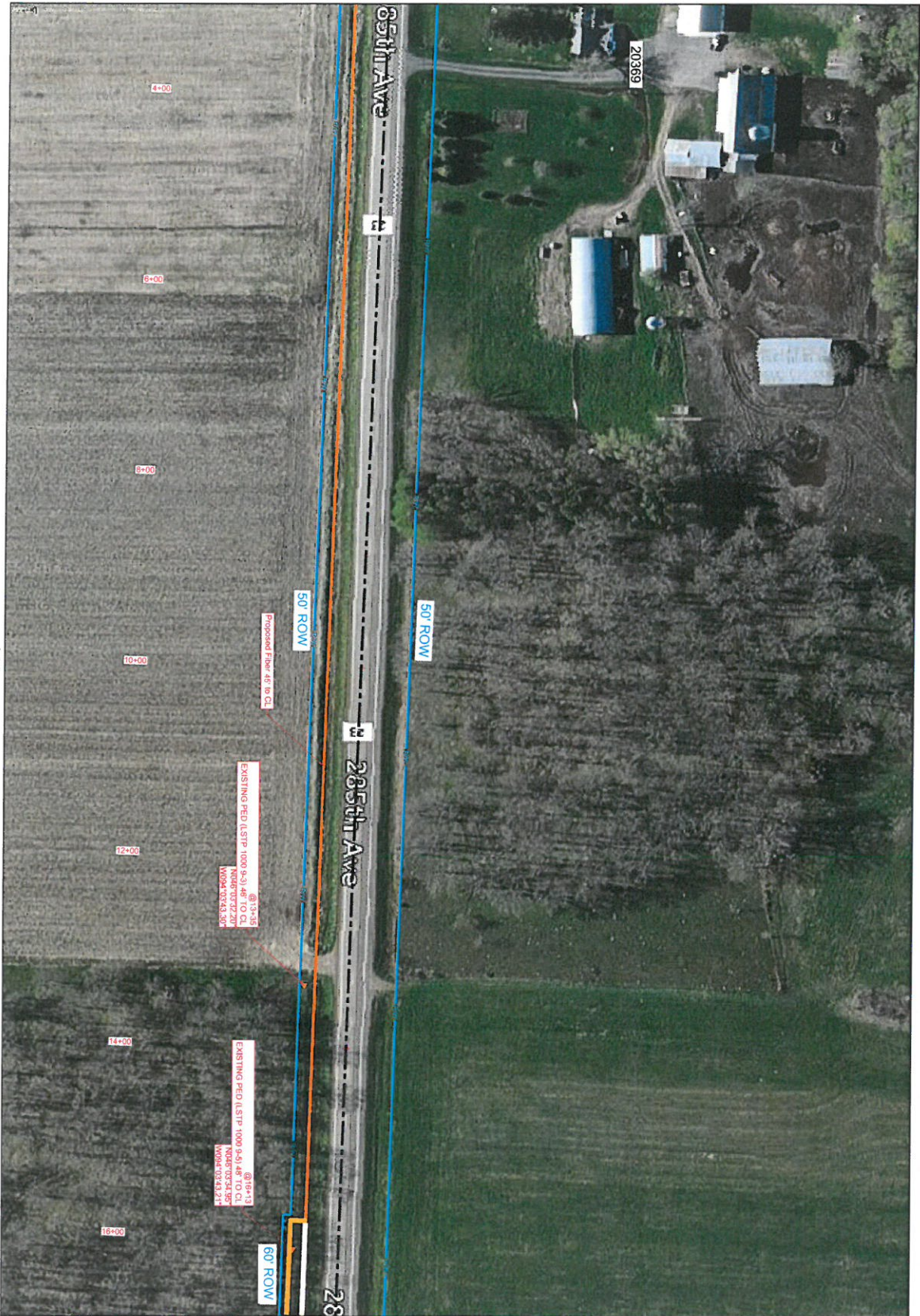
Drawn By:	2/14/17
Checked By:	

Permit List
MORRISON COUNTY 23

GSOC
 GOPHER STATE ONE CALL
 1-800-252-1116
 www.gopherstateonecall.org

Prepared by:
compass
 consultants, inc.
 Morris, MN 55456-1600
 763-536-2222

E-9.19



E-9.21



1" = 100'

Route	PIERZ EAST
City	Pierz
County	Morrison
Parish	
PIERZ EAST ROUTE	
Work Order #	N.152214

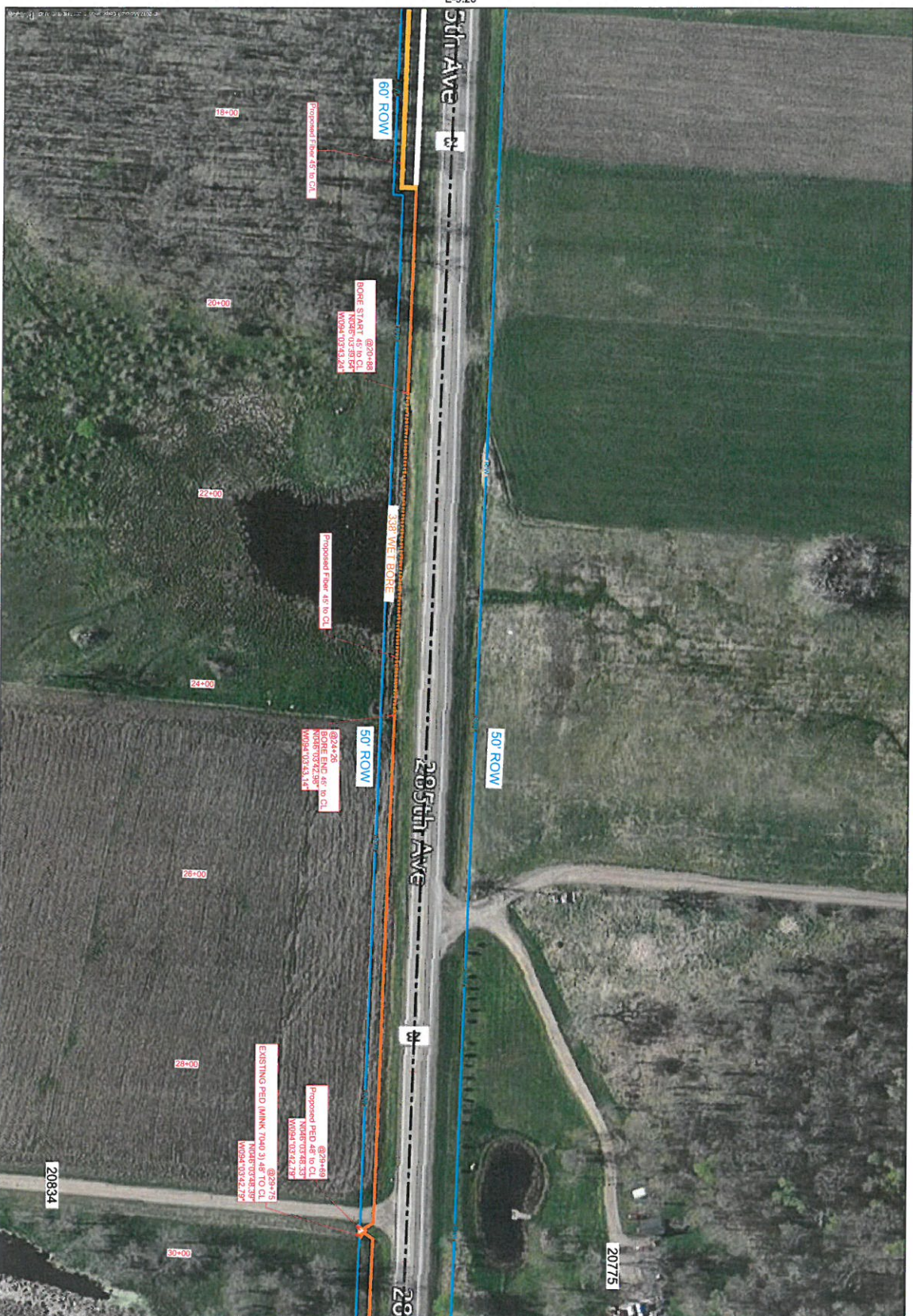


TRACKING	
Signed By:	2/14/17
CS#	
Drawn By:	
Permit List	
MORRISON COUNTY 23	

GSOC
 GOPHER STATE ONE CALL
 1-800-252-1116
 www.gopherstateonecall.org

Prepared by:
 compass consultants, inc.
 Pierz, MN 56158-1800
 TRUCKING@COMPASS.COM

E-9.20



E-9.20

E-9.22



1" = 100'

Route	PIERZ EAST
City	Pierz
County	Morrison
Parish	
State	MO
Project Name	PIERZ EAST ROUTE
WPA Order #	N.152214



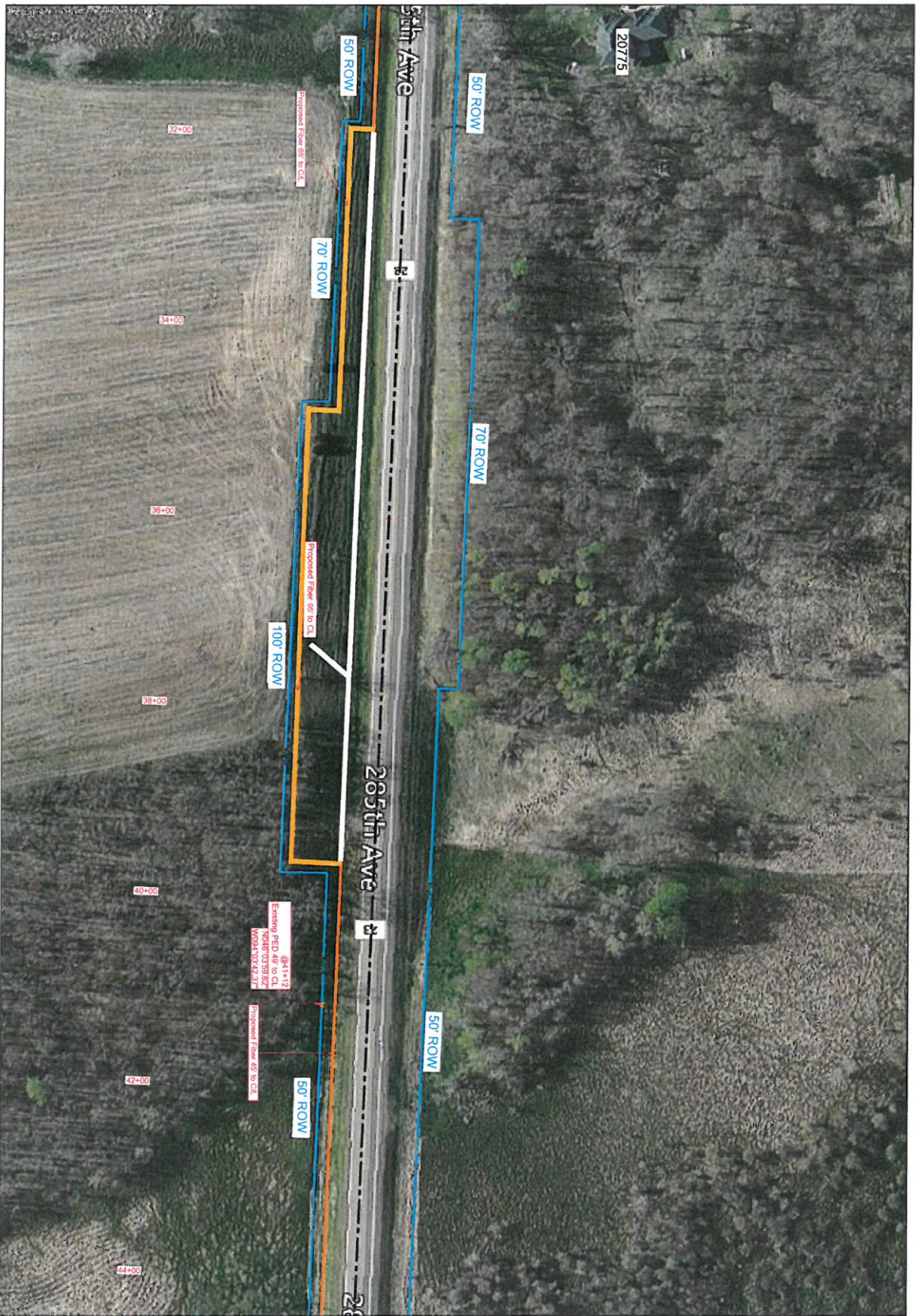
TRACKING
Drawn By: 2/14/17
Checked By:
Permit List
MORRISON COUNTY 23


GSOC
 GOPHER STATE ONE CALL
 1-800-252-1116
 www.gopherstateonecall.org

Prepared by:

compass
 consultants, inc.
 P.O. Box 213
 St. Louis, MO 63103

E-9.21



E-9.21

E-9.23



1" = 100'

Route	PIERZ EAST
City	Pierz
County	Morrison
Filename	PIERZ EAST ROUTE
Work Order #	N.152214



TRACKING

Scaled By: 2/14/17
 Drawn By: [Signature]

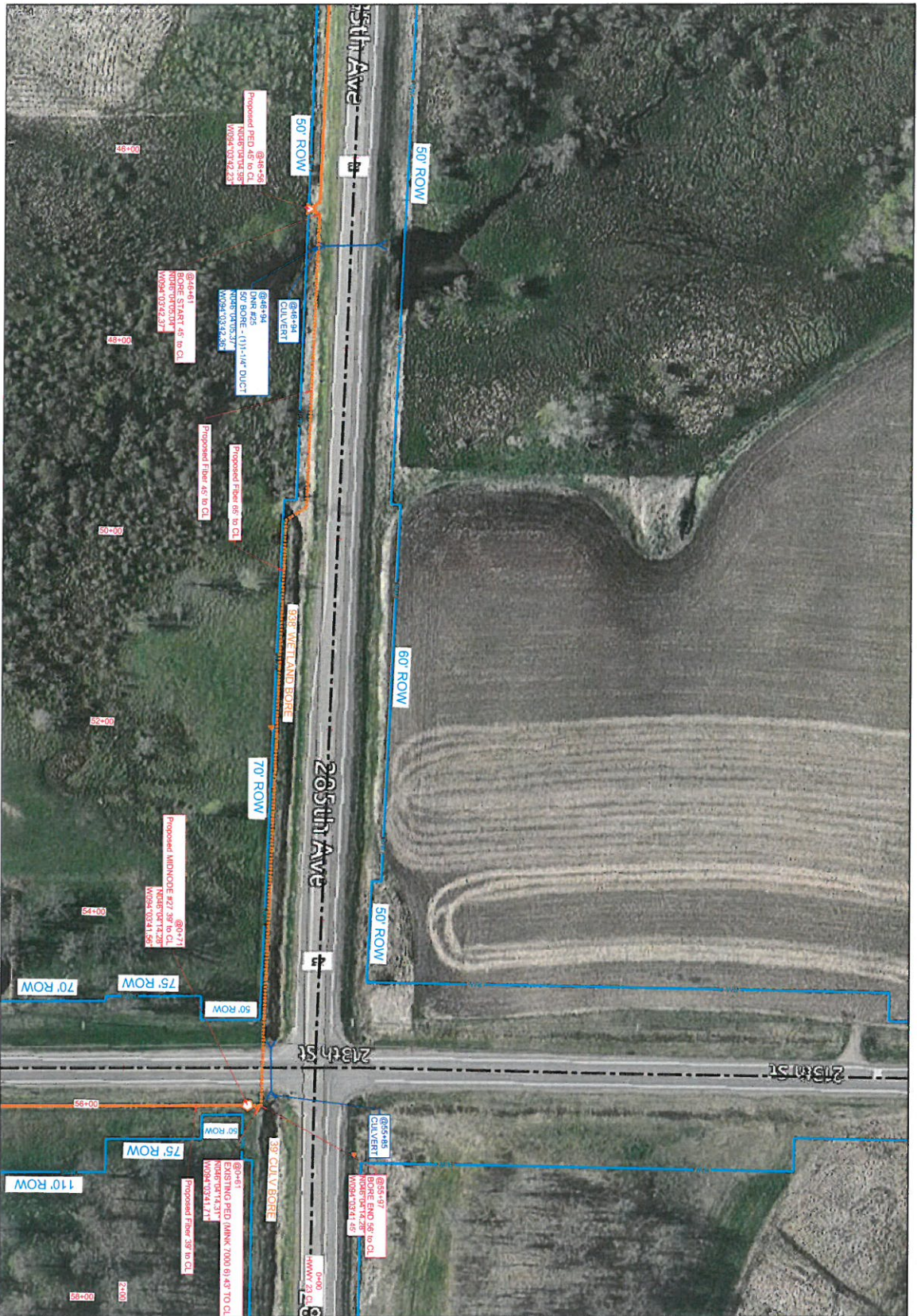
Permit List

MORRISON COUNTY 23

GSOC
 GOPHER STATE ONE CALL
 1-800-252-1116
 www.gopherstateonecall.org






Prepared by:
compass
 consultants, inc.
 Parkville, MO 64476-3600
 1-800-231-3333

E-9.22



E-9.22

E-9.24

	
	
Route	PIERZ EAST
City	Pierz
County	Morrison
Filename	PIERZ EAST ROUTE
Work Order #	N.152214
	
TRACKING	
Survey By	Z14417
CSR	
Drawn By:	
Permit List	
MORRISON COUNTY 23 MORRISON COUNTY 47 DNR	
	
GOPHER STATE ONE CALL 1-800-252-1116 www.gopherstateonecall.org	
Prepared by: 	
PIERZ, MN 55954-3600 Telephone: 507-344-1300	
E-9.23	