



COVERSHEET

	RUS Code:	W/O #:	446109
	EXT 740 C:	WP #:	
	Loan Nbr: BB8	LOC #:	86-000-18-07302
	Loan Ywr: 2017	Name:	SUBSTATION-LITTLE FALLS
	AFF #:	(H) Phone #:	6324219
	Elec:	(W) Phone #:	
	RFCd:	(C) Phone #:	
	By:	Acct #:	

City:	Staked By: LUKE M KASELLA
Sec: 31	Date: 12/28/2018 12:00:00AM
Twp: 40	Signed By:
Rg: 31	09/06/2018

Tailgate Session	
Job Steps:	Work Procedures:
PPE Needed:	Job Hazards:
Source Control Verified/Size:	Equipment Needed:
Personal Tools:	1-Shot/K-Fuse Size:
Crew:	Date:
Comments:	

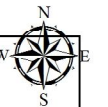
Gopher State	
Locate #:	Date OK:

Comments 2:
Comments 3:

Septic:	Row 1:	Rd Permit:	<input checked="" type="checkbox"/>
Priv Elec:	Row 2:	Cty Permit:	
LP Line:	Line Ext \$ Bore/Push \$ Permit \$ Ped/Loop \$ Total \$	Fees:	
Sprinkler:	Backfill Comments:	TWP Permit:	
Final Grade:		State Permit:	
Brushing:		DNR Permit:	
Trees:		Joint Trench:	
Easements:		Notify TWP:	

Type of Device:	Size of Device:	Box/Switch #:
Reel ID:	Start Ftg:	End Ftg:
Reel ID:	Start Ftg:	End Ftg:

CONDUCTOR SUMMARY			
STATUS	CONDUCTOR	TYPE	QTY (FT)
	4 ACSR	PRIMARY	380
INSTALL	1/0 15KV JAC 220 MIL		30
INSTALL	1/0 ACSR		1114
INSTALL	4/0 ACSR	PRIMARY	27348
	4 ACSR		370
RETIRE	1/0 25KV JAC		10
RETIRE	1/0 ACSR	PRIMARY	2004
RETIRE	4 ACSR		27364



1	Ext	300	1/0 ACSR
	Ext	900	4/0 ACSR
	Ext	1	40-4
	Ext	1	C6.31L
	Ext	1	G3.3
	Ext	1	H1.1
	Ext	1	OWNER LOOPCT LOOP
	New	1	E1.5
	New	3	L1.5
	New	1	L2.5
	Ret	4	E1.1L
	Ret	4	F2.10
	Ret	3	L1.5
	Ret	1	L2.5

2	New	1100	4/0 ACSR
	New	1	40-4
	New	1	C6.31L
	New	3	E1
	New	1	E1.3L
	New	4	F2.10
	New	1	H1.1

3	New	1100	4/0 ACSR
	New	1	40-4
	New	1	C1.11P
	New	1	H1.1

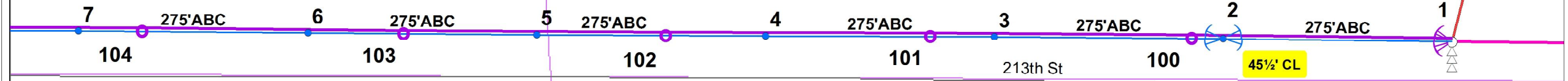
4	New	1100	4/0 ACSR
	New	1	40-4
	New	1	C1.11P
	New	1	H1.1

5	New	1100	4/0 ACSR
	New	1	40-4
	New	1	C1.11P
	New	1	H1.1

6	New	1100	4/0 ACSR
	New	1	40-4
	New	1	C1.11P
	New	1	H1.1

7	New	1100	4/0 ACSR
	New	1	40-4
	New	1	C1.11P
	New	1	H1.1

71-000-31-10000
COUNTY RD 47 & 175TH AVE



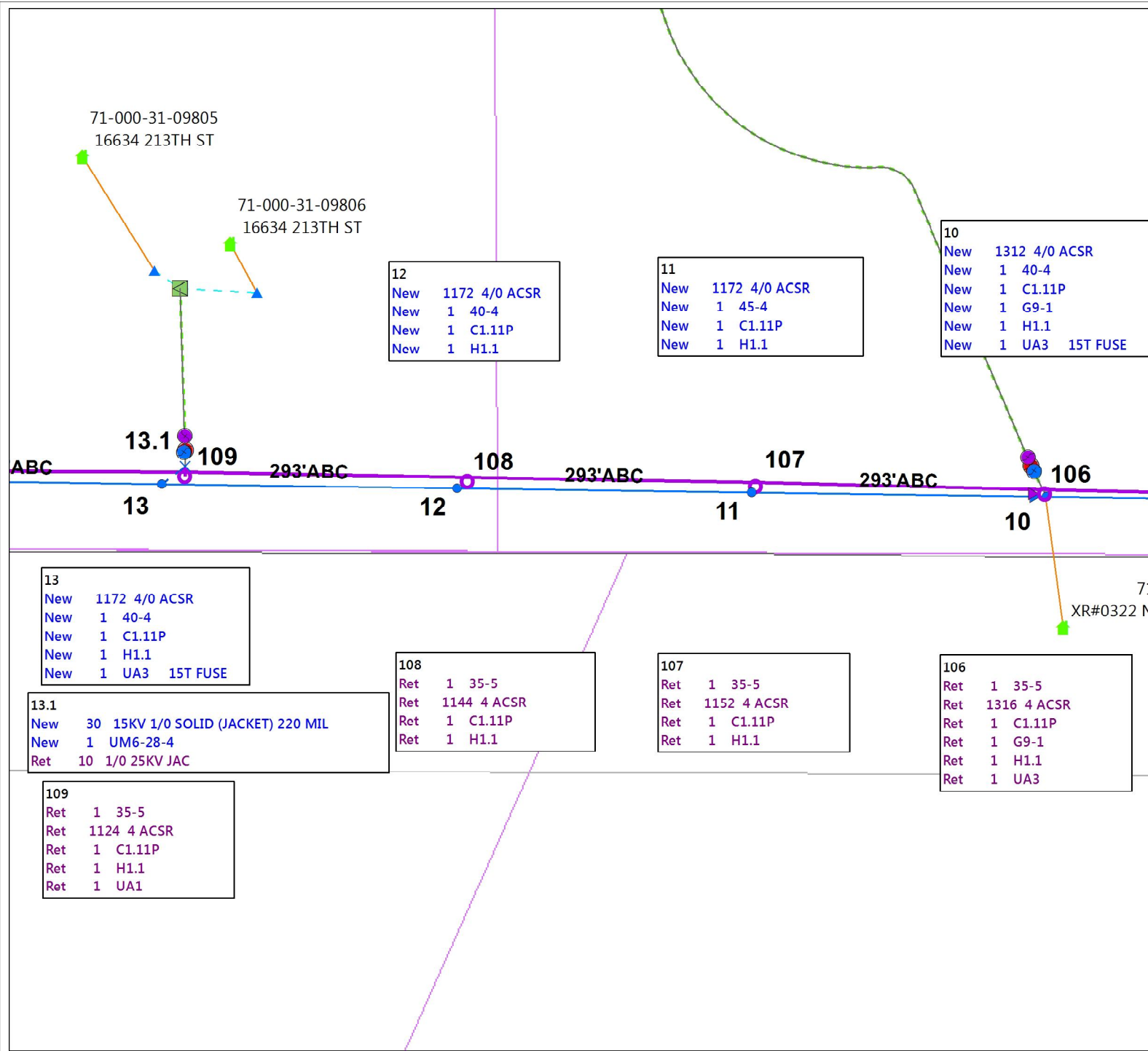
104	Ret	1256	4 ACSR
	Ret	1	40-5
	Ret	1	C1.11P
	Ret	1	H1.1

103	Ret	1	30-6
	Ret	1256	4 ACSR
	Ret	1	C1.11P
	Ret	1	H1.1

102	Ret	1	30-6
	Ret	1272	4 ACSR
	Ret	1	C1.11P
	Ret	1	H1.1

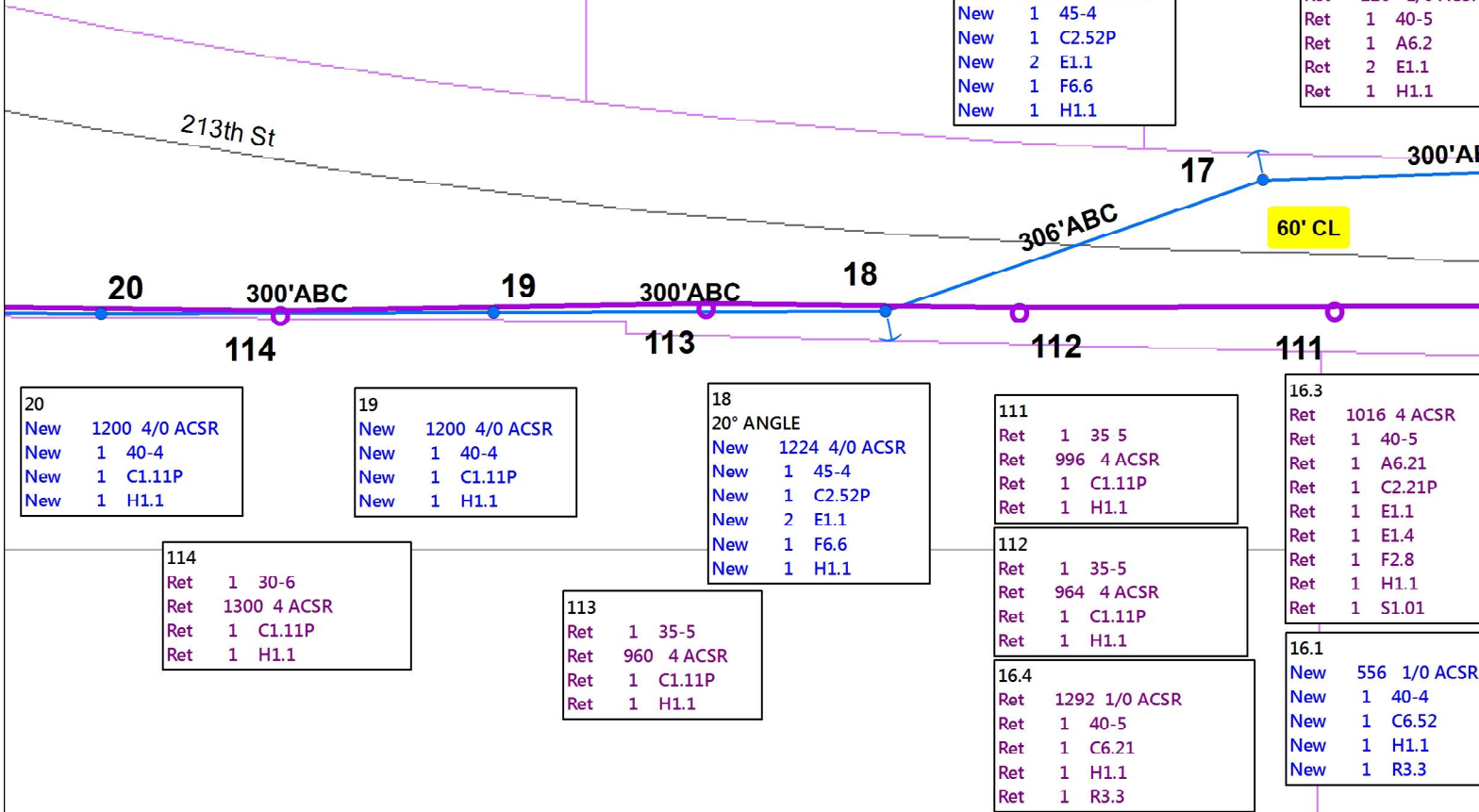
101	Ret	1	30-6
	Ret	1252	4 ACSR
	Ret	1	C1.11P
	Ret	1	H1.1

100	Ret	1	30-6
	Ret	1248	4 ACSR
	Ret	1	C1.11P
	Ret	1	H1.1



16			
Ext	1	F1.8	
Ext	1	F1.8	
New	940	4/0 ACSR	
New	1	40-4	
New	1	C2.21P	
New	1	C5.71L10	
New	3	E1	
New	1	E1.5	
New	1	F2.10	
New	1	H1.1	
New	1	L1.5	
New	1	L2.5	
New	1	S1.01 1/0	
Ret	220	1/0 ACSR	
Ret	1	40-5	
Ret	1	A6.2	
Ret	2	E1.1	
Ret	1	H1.1	

17			
20° ANGLE			
New	1200	4/0 ACSR	
New	1	45-4	
New	1	C2.52P	
New	2	E1.1	
New	1	F6.6	
New	1	H1.1	



20			
New	1200	4/0 ACSR	
New	1	40-4	
New	1	C1.11P	
New	1	H1.1	

19			
New	1200	4/0 ACSR	
New	1	40-4	
New	1	C1.11P	
New	1	H1.1	

18			
20° ANGLE			
New	1224	4/0 ACSR	
New	1	45-4	
New	1	C2.52P	
New	2	E1.1	
New	1	F6.6	
New	1	H1.1	

111			
Ret	1	35 5	
Ret	996	4 ACSR	
Ret	1	C1.11P	
Ret	1	H1.1	

16.3			
Ret	1016	4 ACSR	
Ret	1	40-5	
Ret	1	A6.21	
Ret	1	C2.21P	
Ret	1	E1.1	
Ret	1	E1.4	
Ret	1	F2.8	
Ret	1	H1.1	
Ret	1	S1.01	

114			
Ret	1	30-6	
Ret	1300	4 ACSR	
Ret	1	C1.11P	
Ret	1	H1.1	

113			
Ret	1	35-5	
Ret	960	4 ACSR	
Ret	1	C1.11P	
Ret	1	H1.1	

112			
Ret	1	35-5	
Ret	964	4 ACSR	
Ret	1	C1.11P	
Ret	1	H1.1	

16.4			
Ret	1292	1/0 ACSR	
Ret	1	40-5	
Ret	1	C6.21	
Ret	1	H1.1	
Ret	1	R3.3	

16.1			
New	556	1/0 ACSR	
New	1	40-4	
New	1	C6.52	
New	1	H1.1	
New	1	R3.3	

79-000-01-00/01
SW CORNER OF 213ST AND

213th St

25
Ext 1 40-4
Ext 1 C6.31L
Ext 4 E1
Ext 4 F2.10
Ext 1 H1.1
Ext 1 UC1
New 1200 4/0 ACSR
New 3 L1.5
New 1 L2.5
Ret 1324 4 ACSR
Ret 3 L1.5
Ret 1 L2.5

24
New 1204 4/0 ACSR
New 1 40-4
New 1 C1.11P
New 1 H1.1

23
New 1200 4/0 ACSR
New 1 40-4
New 1 C1.11P
New 1 H1.1

Hwy 371 South

Hwy 371 North

47 Off On 371 N

25

300'ABC

24

301'ABC

23

118

117

118
Ret 1 35-5
Ret 1320 4 ACSR
Ret 1 C1.11P
Ret 1 H1.1

117
Ret 1 30-6
Ret 1304 4 ACSR
Ret 1 C1.11P
Ret 1 H1.1