

SOLL1214				
FN6930400666X1	14	16	26	
	49	41	34	
	2	13	0	20
	21	21	30	27
	7	3	8	1
	50.08	2.72		1
J/J				

SOLL1215				
NA/SOLL11M	23	20	17	
	49	43	34	
	5	2	0	2
	21	21	38	38
	1	0	8	1
	49.19	0.54		2

L1216			
DATE	24	24	
TIME	43	34	
	0	20	
	30	29	
	8	1	
	1.09		
	2		

NODE 30LL12			
106	107	101	102
VAC	VAC	VAC	VAC
1068	918	406	416
NA	NA	NA	NA

Remove original
4ft from case &
plug. Resplice fiber
according to documentation
Burn 12

Relocate or
remove anchor
for road project

Pull out
old fiber from
conduit
Cut fiber
where

Pole transfer
at cross
Back to
new pole

pull fiber through
Back to here

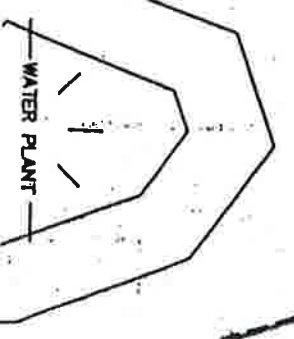
remove
ped from N side of
S 5th Ave & relocate it
to S side after fiber
is removed from conduit
& place ped
intercept it & place ped
over top for future use
conduit

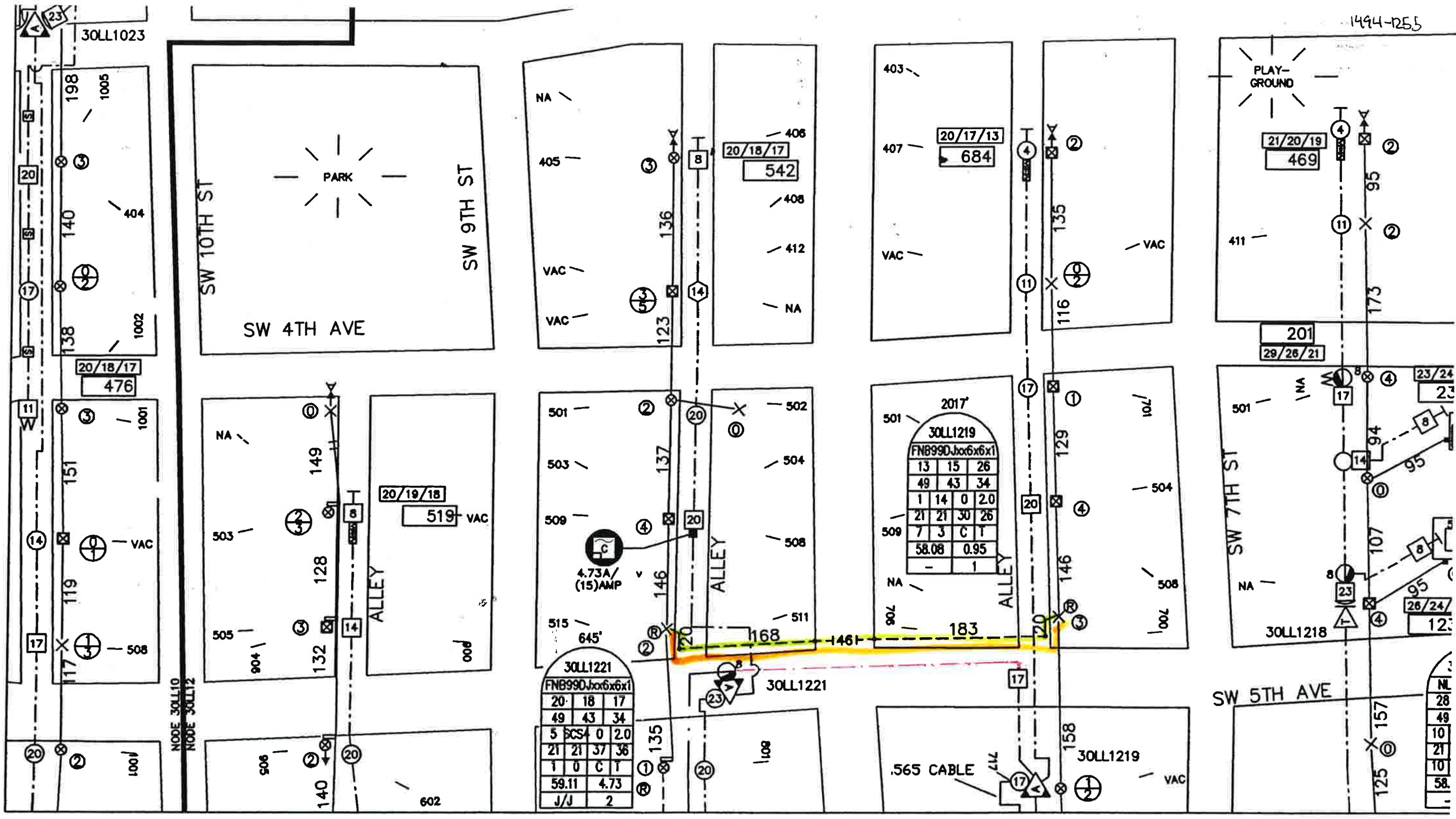
*Make sure to keep
Tim with Tri City paving
updated with progress of
relocation 320-3824853

*Place conduit to rear
of new row. Pull. 625
thru conduit. Move pedestal
Back. Saving any drops associated
with ped relocation.

- new old running line
make sure it is as far
back in row as possible
- Pull new 625 through
2" conduit that will be
placed

MISSISSIPPI RIVER





ROUTE SYMBOLS	QTY.	ROUTE SYMBOLS	QTY.	ROUTE SYMBOLS	QTY.	FOOTAGE	SIZE	CABLE DESCRIPTION	EXPRESS FEEDER	DESIGN SYMBOLS	NODE/AMP/LE DA
LD. LONG DROP	0	⊙ PUSH POLE	0	○ AER. SINGLE DWELL. ACT./POT.	202/216		FIBER				
→ EXISTING ANCHOR	11	× POWER POLE	38	▽ AER. COMMERCIAL UNITS	9	STRAND	1.0				
⊗ SET ANCHOR	12	○ PHONE POLE	0	□ AER. MULTI-DWELLING UNITS	8		8.75				
↓ SIDEWALK GUY	0	⊗ JOINT USE POLE	43	○ U-G SINGLE DWELL. ACT./POT.	9/9	U-G	860				
⊗ SIDEWALK SET GUY	0	● CATV SET POLE	0	▽ U-G COMMERCIAL UNITS	0		840				
→ POLE TO POLE GUY	0	⊗ TRANS. POLE	32	□ U-G MULTI-DWELLING UNITS	0	TOTAL	750				
++ OVERHEAD GUY	1	○ CONC./METAL POLE	0	□ MOTEL UNITS	0		715				
⊙ RISER	11	□ PEDESTAL	12	- - U-G BORE	3		700				
							650				
							625				
							585				
							540				
							500				
							412				
							137				