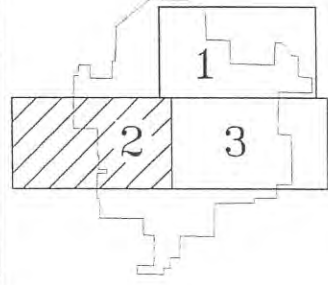


16  
GREY EAGLE  
TWP.

ELMDALE  
TWP.

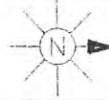
KRAIN  
TWP.



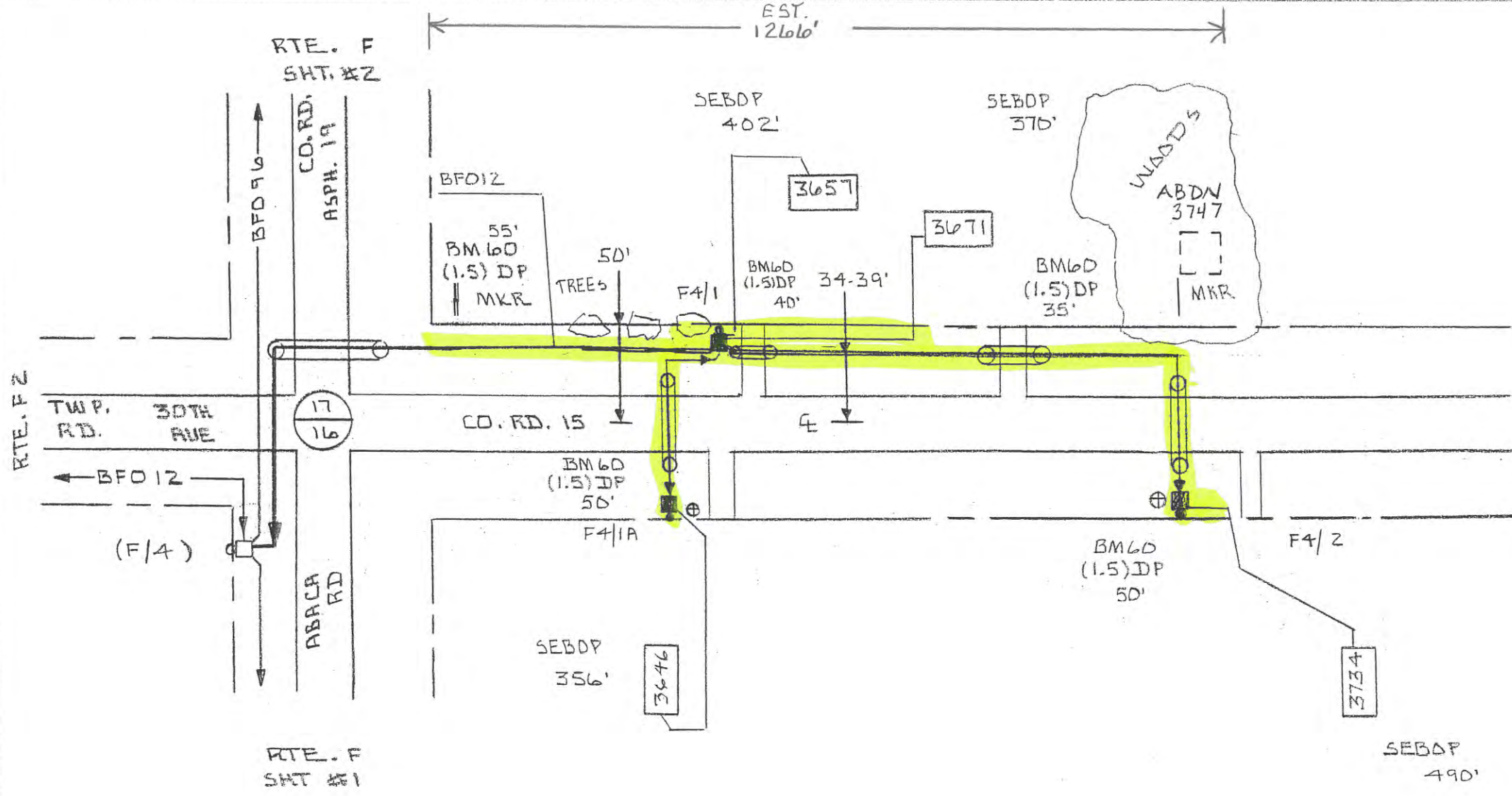
PROJECT NO.	UPSALA CO-OP TELEPHONE ASS'N UPSALA STAKING KEY 2 OF 3			ISS. NO.
602	DRAWN BY: RLK	DATE: 8-26-02	SCALE: NTS	MAP NO. UPSLXT02
	FINLEY ENGINEERING COMPANY, SLAYTON, MN. 56172 (507)-777-2000			FILE: 602/UPSALA

2011 FIBER

N



SEC 17-16	STAKED BY LM	EXCHANGE UPSALA	LEAD F4
TWP 127N	DATE 12-09	STAKING SHEET AND PLANT RECORD	SHEET 1 OF 1
COUNTY MORRISON	RGE 31 W	REL	REV.
EST. 1266'		PROJECT	MAP REF.



PED OR STAP	PED		POL		MISC.				SPICE		CABLE		MISC NOTES
	BD	BA	BDO	BDD	BMZ	BM	BM60	BM	HD-1	BFD	SEBDP	NID	
(F/4)	23	33	8A	6A	5/8x8	53	(1.5)DP	83		12	4	FD	
		(1)	(1)				55						
F4/1		1	1		1		40	1	3	970	402	1	3657
								1			370	1	3671
							35				356	1	3646
F4/1A		1	1		1		50		1	166			
								1					
F4/2		1	1		1		50	1	1	686			
					1			1			490	1	3734
TOTAL		3	3		7	2	230	4	5	1822	1618	4	