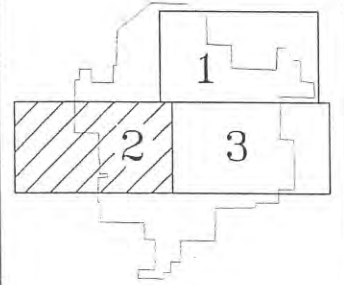


16  
GREY EAGLE  
TWP.

ELMDALE  
TWP. 8

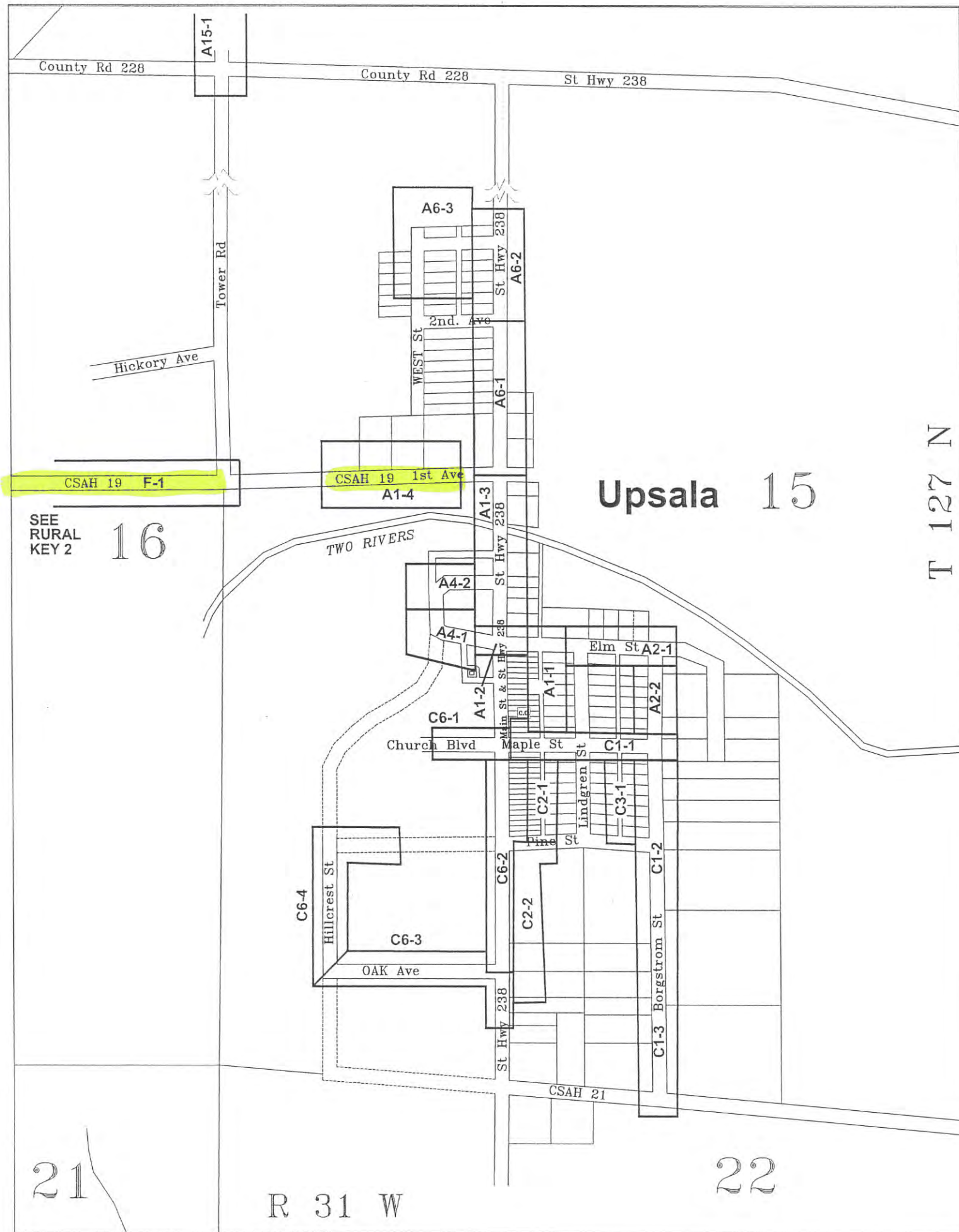
KRAIN  
TWP.



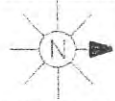
PROJECT NO.	UPSALA CO-OP TELEPHONE ASS'N UPSALA STAKING KEY 2 OF 3			ISS. NO.
602	DRAWN BY: RLK	DATE: 8-26-02	SCALE: NTS	MAP NO. UPSLXT02
	FINLEY ENGINEERING COMPANY, SLAYTON, MN. 56172 (507)-777-2000			FILE: 602/UPSALA
				04

2011 FIBER





2011 FIBER  
 UPSALA URBAN NI  
 KEY 1 OF 1  
 DATE: 3/1/10



MARR - TODD

SEC 19-30 / 24

STAKED BY LM

EXCHANGE UPSALA

LEAD F

TWP. 127N

DATE 12-09

STAKING SHEET AND PLANT RECORD

SHEET 7 OF 7

COUNTY MORRISON - TODD

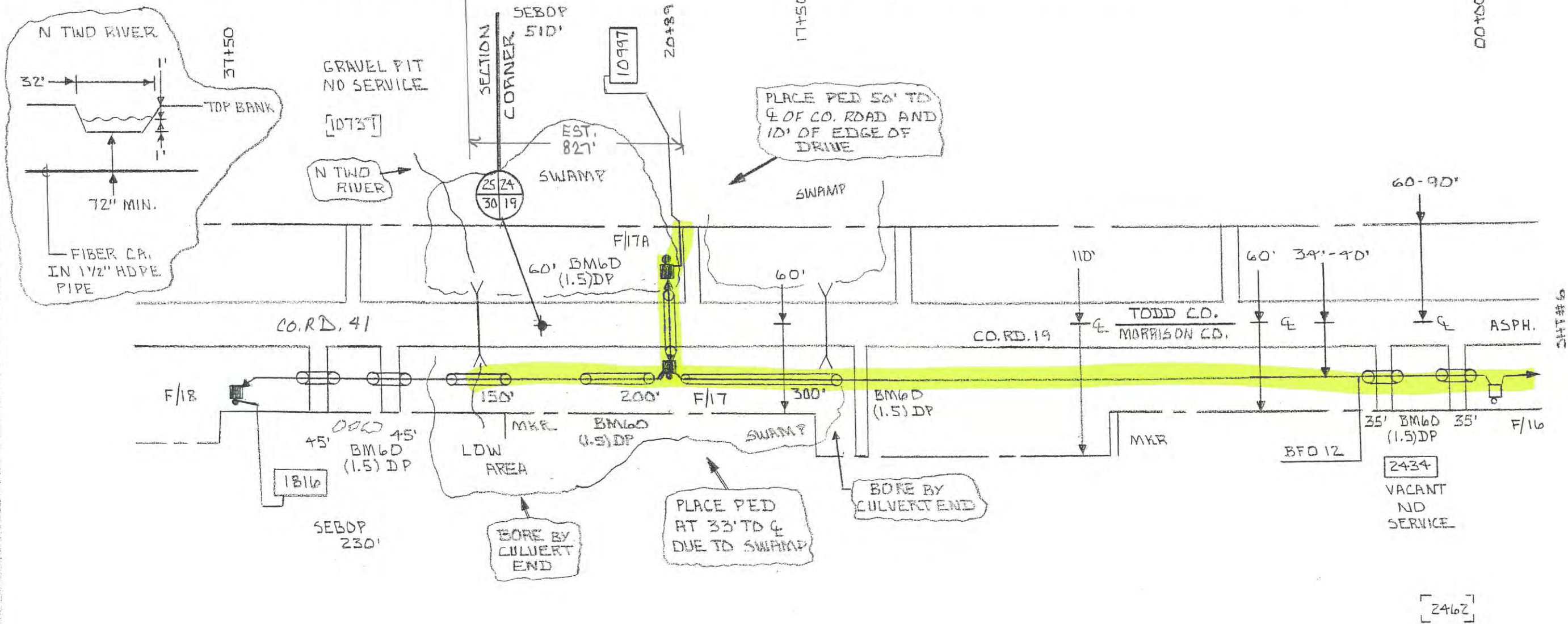
RGE 32W

REL

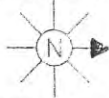
REV.

PROJECT

MAP REF



SEC OR STAK	PED		POLE		MISC			SPEC		CABLE		MISC NOTES
	SD	BD	BDD	BR	BM2	BM3	BM6D	HD-1	BFO	SEBOP	NLD	
(F/16)			(1)	(1)								
							35					
							35					
						1						
							300					
F/17		1	1		1			1	2150			
F/17A		1	1		1		60	1	110	510	1	10997
						1	200					
							150					
							45					
F/18		1	1		1		45	1	1720	230	1	1816
TOTAL		3	3		5	2	870	3	3980	740	2	



MDRR - TDID

SEC 18-19 / 13-29 STAKED BY LM

TWP 127N-127N DATE 12-09

RGE 32W-32W REL REV PROJECT

EXCHANGE UPSALA

STAKING SHEET AND PLANT RECORD

LEAD F

SHEET 6 OF 7

MAP REF.

COUNTY MORRISON - TDID

30+10

HALF SECTION

10+51

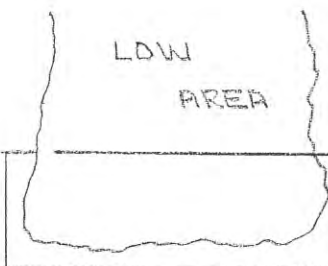
02+09

00+00

SECTION CORNER



TRAILER ND SERVICE [11433]



TRAILER REMOVED [11681]



TILE

50-80'

BFO 12

MORRISON LINE RD. C.D. RD. 19

COUNTY LINE

ROUTE F2D

N. C. RD.

ABACA FED.

C.D. RD. 19

SHT # 5

SHT # 7

[VAC.] ND SERVICE

F/16 BM60 (1.5) DP 40'

60'

35' 35' BM60 (1.5) DP

90-110' 35' BM60 (1.5) DP

MKR BM60 (1.5) DP 45'

2768

F/15 60'

(F/14) BFO 12

BFO 45

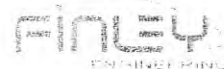
24162

SEBDF 730'

PLDW AROUND CULVERT END

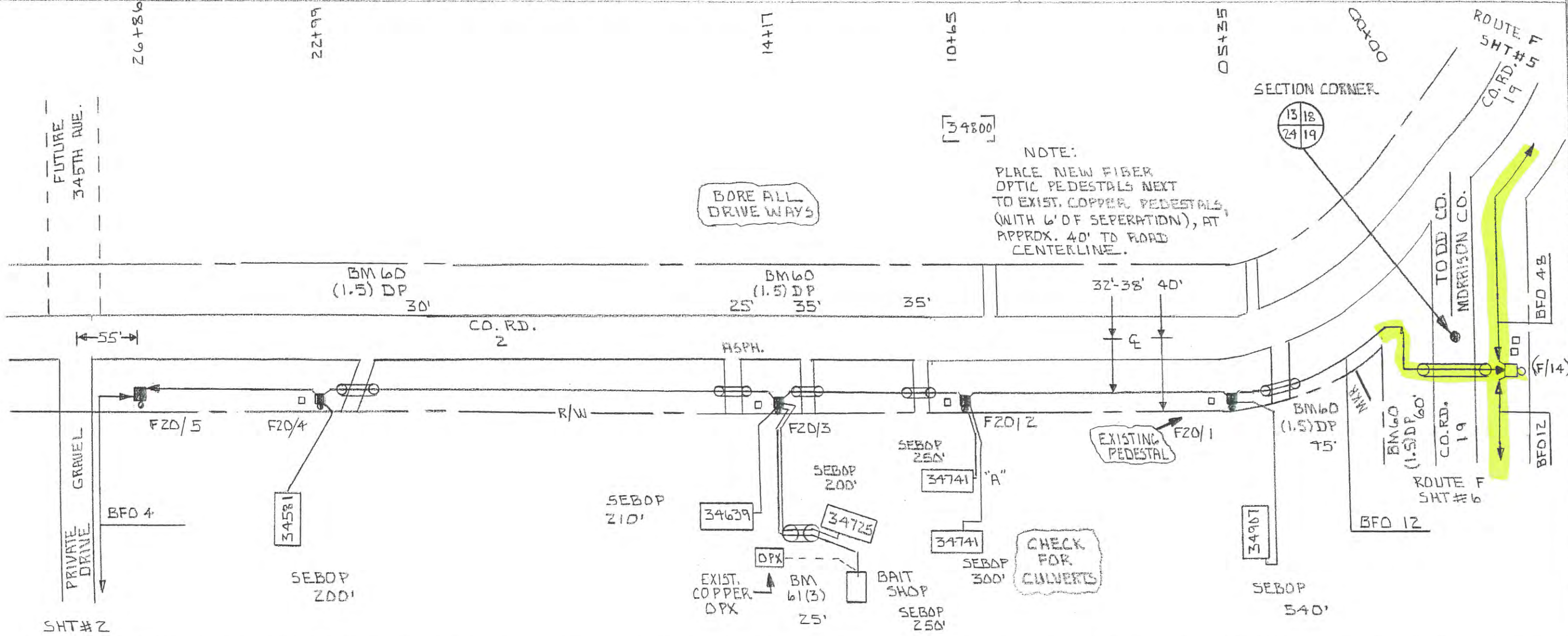
SEBDF 190'

PED OR STA#	PED			MISC				SPLICE		CABLE			MISC NOTES
	BD	BA 23	BDD 6A	BM 5/8x8	BM 53	BM60 (1.5) DP	BM 83	HD-1	BFO 12	SEBDF 4	NID FD		
(F/14)		(1)	(1)										
F/15		1	1	/		45	1	1	2416	190'	1	2768	
						35							
						35							
						35							
F/16		1	1	/		40	1	1	2880	730	1	24162	
TOTAL		2	2		4	190	2	2	3126	920	2		



TODD - MORRISON

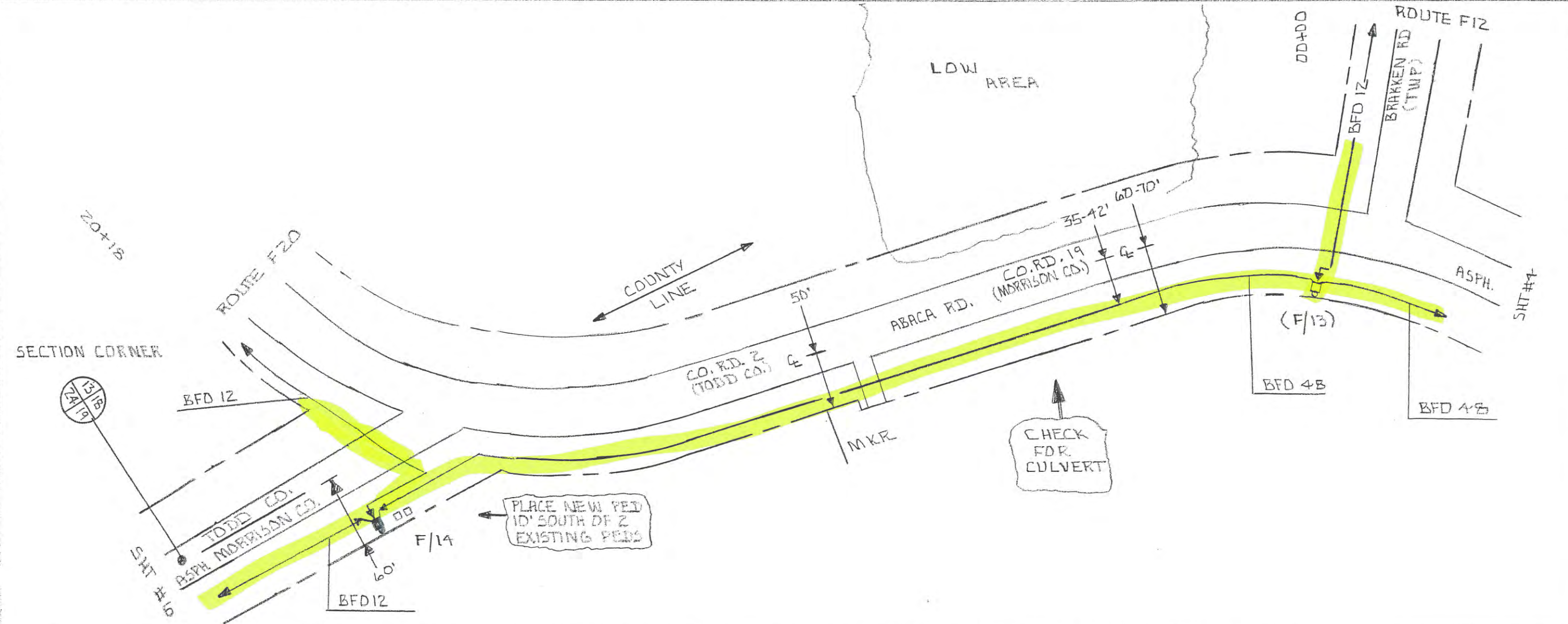
SEC 24 - 19	STAKED BY LM	EXCHANGE UPSALA	LEAD FZD
TWP 127 N	DATE 12-09	STAKING SHEET AND PLANT RECORD	SHEET 1 OF 2
COUNTY TODD - MORRISON	RGF 32 W	REL	REV
PROJECT			MAP REF



REL OF SHEET	RED	POL	MIS.				SP. 10'		CABLE		MISC NOTES			
(F14)	BD	BA 23	BDA BA	BDO 6A	BMZ 5/8x8	BM 53	BM 61(3)	BM60 (1.5)DP	BM B3	HD-1	BFO 12	SEBOP 4	NID FO	
		(1)	(1)					60						
								45						
FZD/1		1		1	/	/		35	1	1	610	540	1	34907
FZD/2		1		1	/	/		35	1	2	560	250	1	34741 A
FZD/3		1		1	/	/		25	1	3	380	200	1	34725
					/	/		25	1			250	1	BAIT SHOP (34725)
FZD/4		1		1	/	/		30	1			210	1	34639
					/	/			1			200	1	34581
FZD/5		1		1	1					1	420			
		5		5	12	1	25	230	7	8	2888	1950	7	

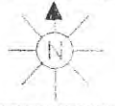


SEC 18	STAKED BY LM	EXCHANGE DPSALA	LEAD F
TWP 127N	DATE 12-09	STAKING SHEET AND PLANT RECORD	SHEET 5 OF 7
COUNTY MORRISON	RGE 31W	REL	REV.
PROJECT		MAP REF.	

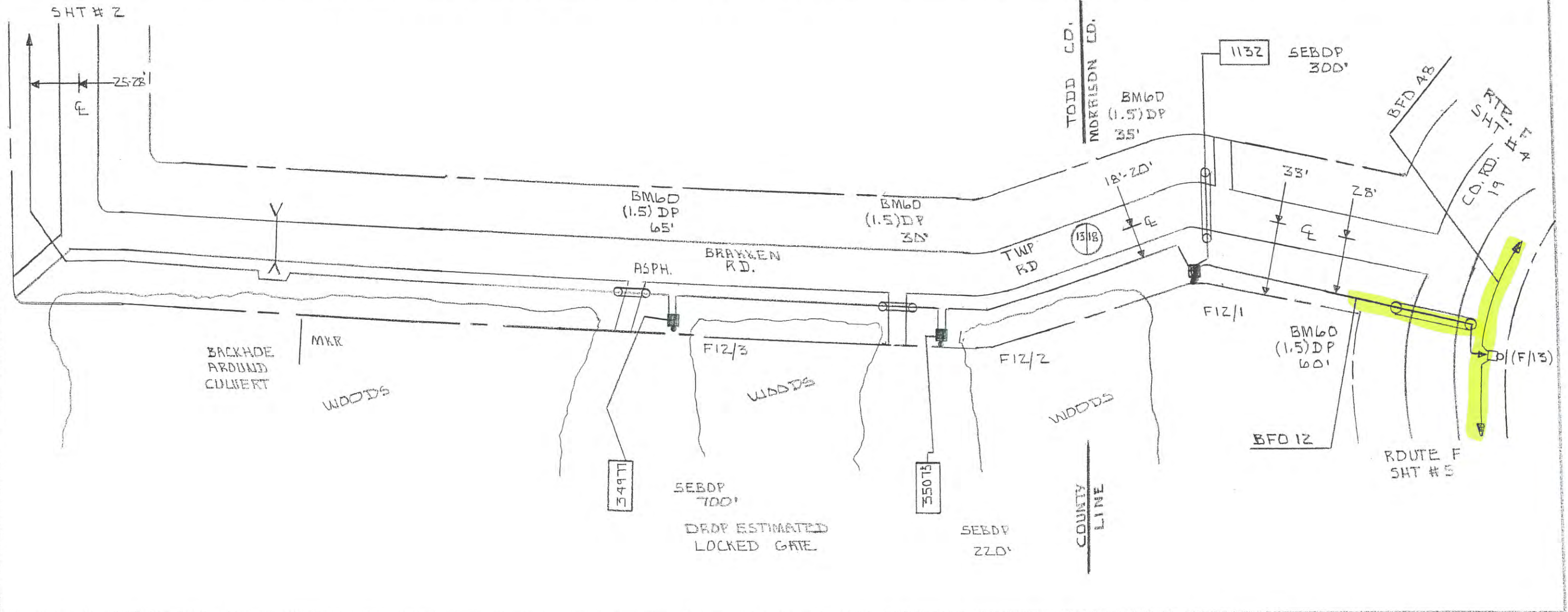


PED OR STAK	POLE				MISC		SPLICE	CABLE				MISC. NOTES	
	BD	BA	BDD	BDD	BM 2	BM		BFD					
(F13)		23	BR	BR	5/8x8	S3	HD-1	BFD	4B				
		(1)	(1)										
F/14							24		2074				
							24		2074				

MORRISON - TODD



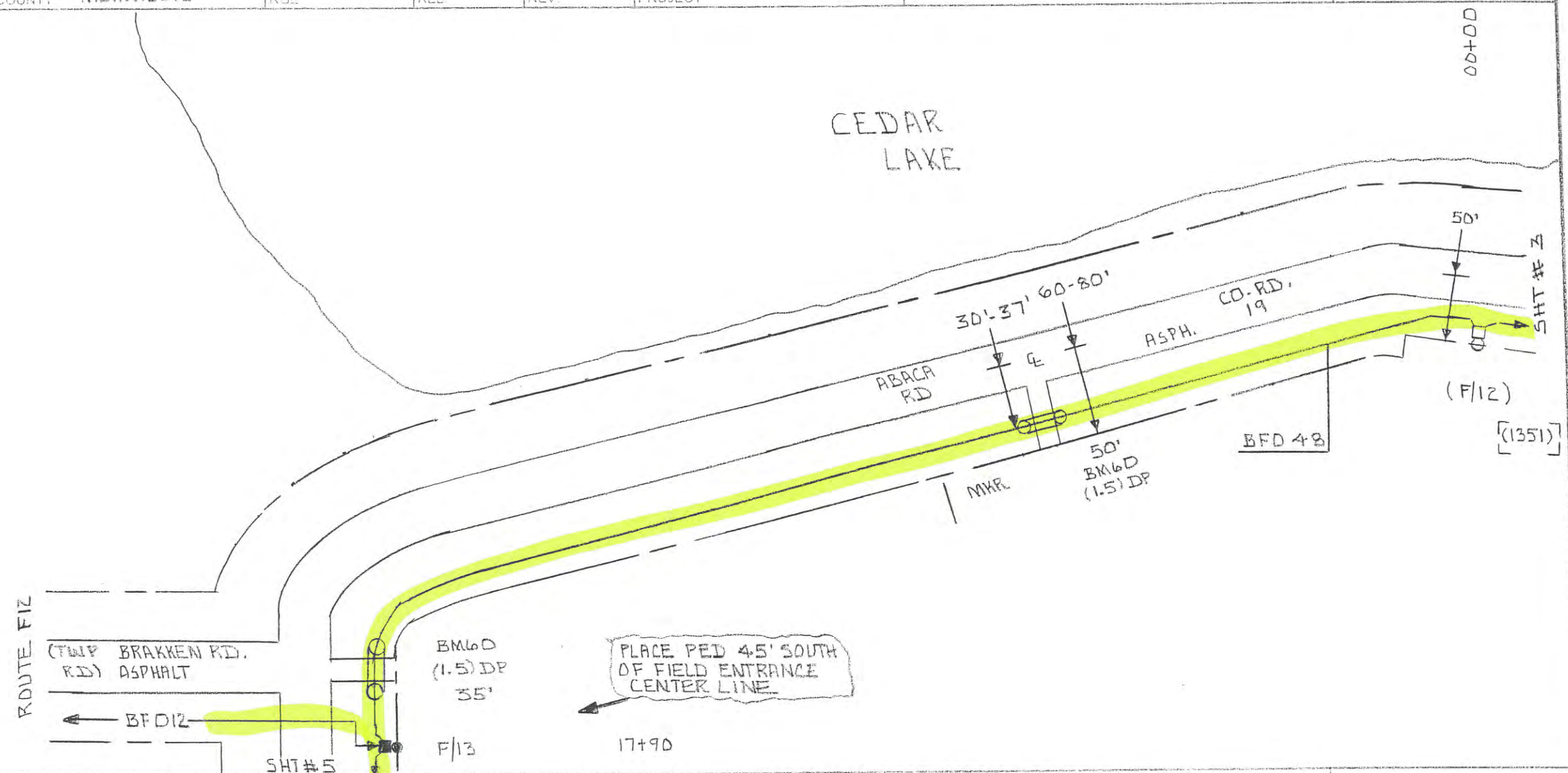
SECTION 13 - 13	STAKED BY LM	EXCHANGE UPSALA	LEAD FIZ
TWP. 127N	DATE 12-09	STAKING SHEET AND PLANT RECORD	SHEET 1 OF 2
COUNTY MORRISON - TODD	RANGE 31W - 32W	PROJECT	MAP REF.



Pole	SD	POLE			MISC				SPLIT		TABLE		MISC. NOTES
		BA	BDD	BDD	BMZ	BM	BM60	BM	HD-1	BFO 12	SEBOP	NID	
(F/13)		23	8A	6A	5/8x8	53	(1.5)DP	83				FO	
		(1)	(1)				60						
F12/1		1		1	/		35	1	1	356	300	1	1132
F12/2		1		1	/		30	1	1	590	220	1	35073
F12/3		1		1	/		65	1	1	490	700	1	34977
						1							
		3		3		6	1	190	3	3	1436	3	

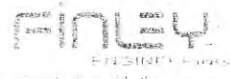


SEC. 18	STAKED BY LM	EXCHANGE UPSALA	LEAD F
TWP 12TN	DATE 12-09	STAKING SHEET AND PLANT RECORD	SHEET A OF 7
COUNTY MORRISON	RGE 31W	REL	REV
PROJECT		MAP REF.	

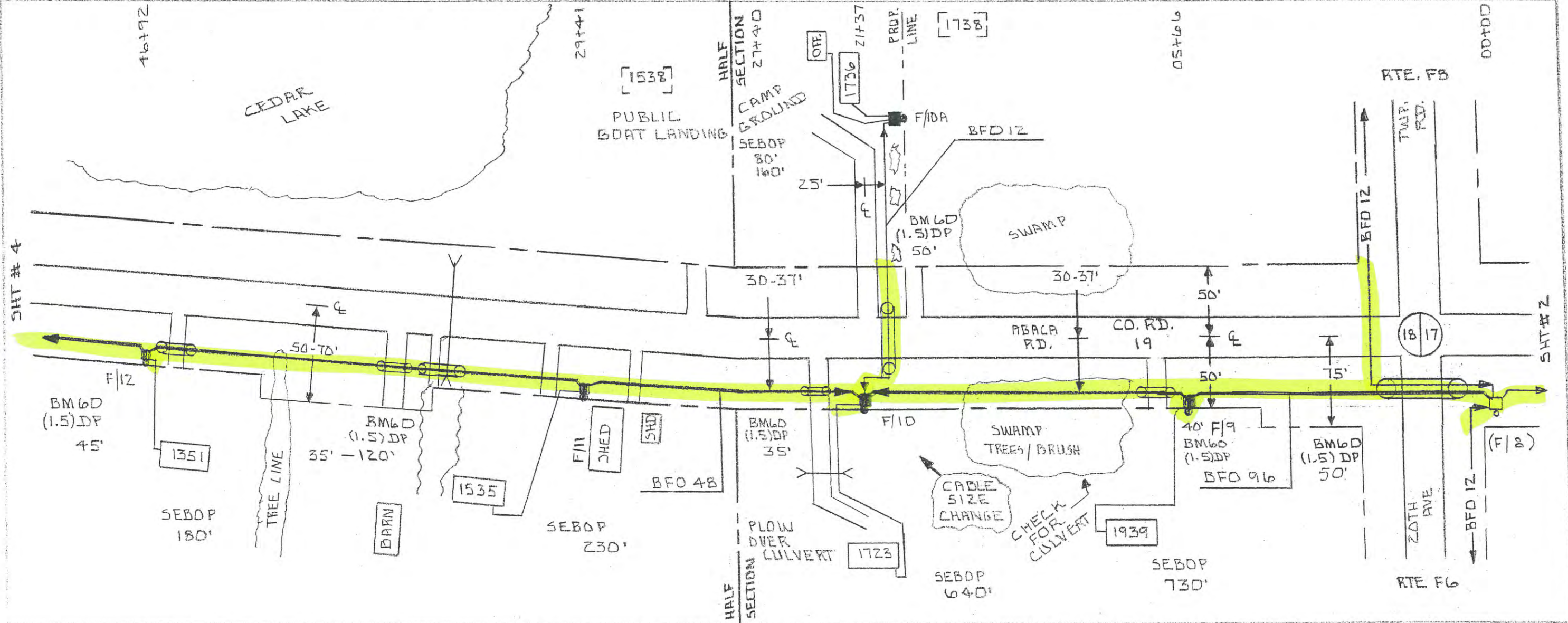


PED OR STAP	MED	POLE	MISC.			SP	CABLE	MISC. NOTES
			BM	BM60	BM60			
(F/12)	BD 23 (1)	BA	BDD BA (1)	BM 53 (1.5) DP	BM60 (1.5) DP	HD-1	BFD 4B	
					50			
F/13	1	1			35	10	1850	
TOTAL	1	1		1	85	10	1850	

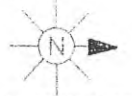




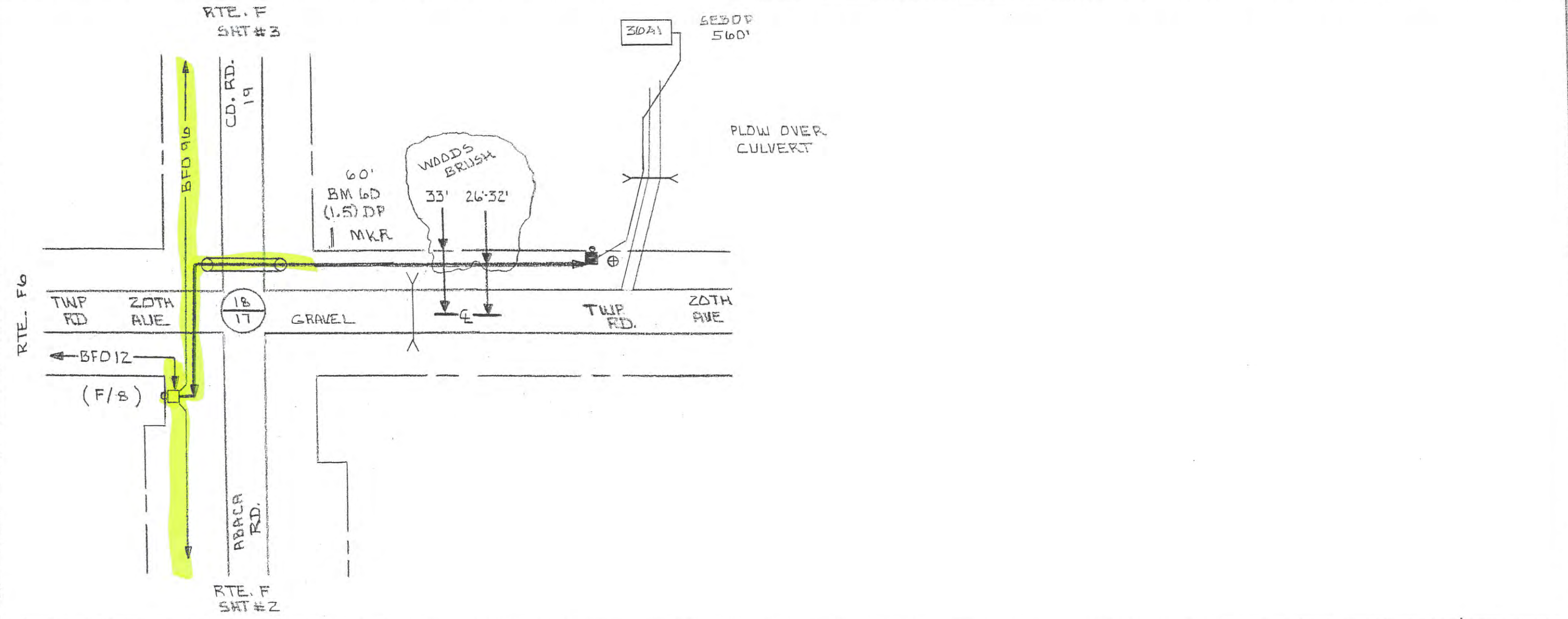
SEC 18	STAKED BY LM	EXCHANGE UPSALA	LEAD F
TWP 127N	DATE 12-09	STAKING SHEET AND PLANT RECORD	SHEET 3 OF 7
COUNTY MORRISON	RGE. Z1W	PROJECT	MAP REF.



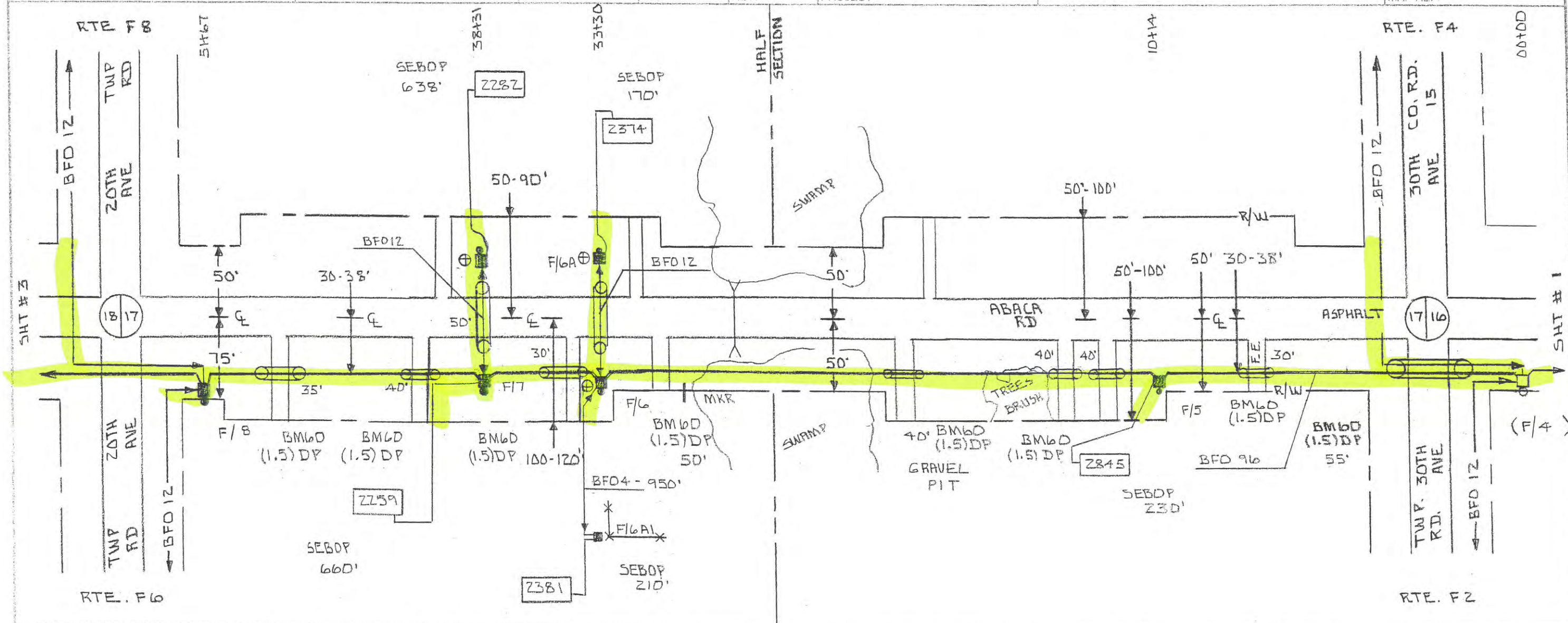
Pole or Structure	Pole				Misc			Splice			Cable		Misc Notes	
	SD	BA 23	BDD 8A	BDD 6A	BMZ 5/8x8	BM6D (1.5)DP	BM 83	HO-1	BFO 96	BFO 48	BFO 12	SEBOP 4		ND FD
(F/8)		(1)	(1)											
F/9		1	1			55	1	1	616			730	1	1939
F/10		1	1			40	1	4	1628			640	1	1723
F/10A		1		1		50	1	2			846	100	1	1736
							1					180	1	1736 OFFICE
F/11		1	1			35	1	1		858		230	1	1535
						120								
F/12		1	1			45	1	1		2010		180	1	1531
TOTAL		5	4	1		260	6	9	2244	2068	846	2060	6	



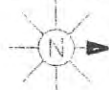
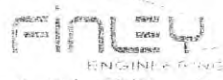
SEC 17-18	STAKED BY LM	EXCHANGE LPSALA	LEAD FB
TWP 127N	DATE 12-09	STAKING SHEET AND PLANT RECORD	SHEET 1 OF 1
COUNTY MARRISON	RGE 31W	REL	REV.
PROJECT		MAP REF.	



REC OF STAKE	RED		POLI		MISC				SPACE		CABLE		MISC NOTES
	3D	BA 23	BDD 8A	BDD 6A	BM 2 5/8x8	BM 53	BM 60 (1.5) DP	BM 83	HD-1	BFD 12	SEBOP 4	MID FO	
(F/B)		(1)	(1)				60						
					1								
FB/1		1	1		1			1		1020		1	3641
											560		
		1	1		2	1	60	1		1020	560	1	



PED OR STAKE	PED				POLE				MISC		SPLICE			CABLE			MISC. NOTES	
	BD	BA	BDD	BDD	BDD	BDD	BDD	BDD	BMZ	BM	BM60	BM	HO-1	BFO	BFO	BFO		SEBOP
(F/4)		23	SA	6A	4A			5/8x8	53	55				96	12	4	4	
F/5		1	1					40	1	1			1058			230	1	2845
F/6		1	1					45	1	3			2386			210	1	2381
F/6A		1		1				50	1	1				130		170	1	2374
F/6A1		1			1			30							950			
F/7		1	1					50	1	3			536			660	1	2259
F/7A		1		1				40	1	1				130		630	1	2282
								35										
F/8		1	1							4			1388					
TOTAL		7	4	2	1			12	1	415		5	13	5368	260	950	1900	5

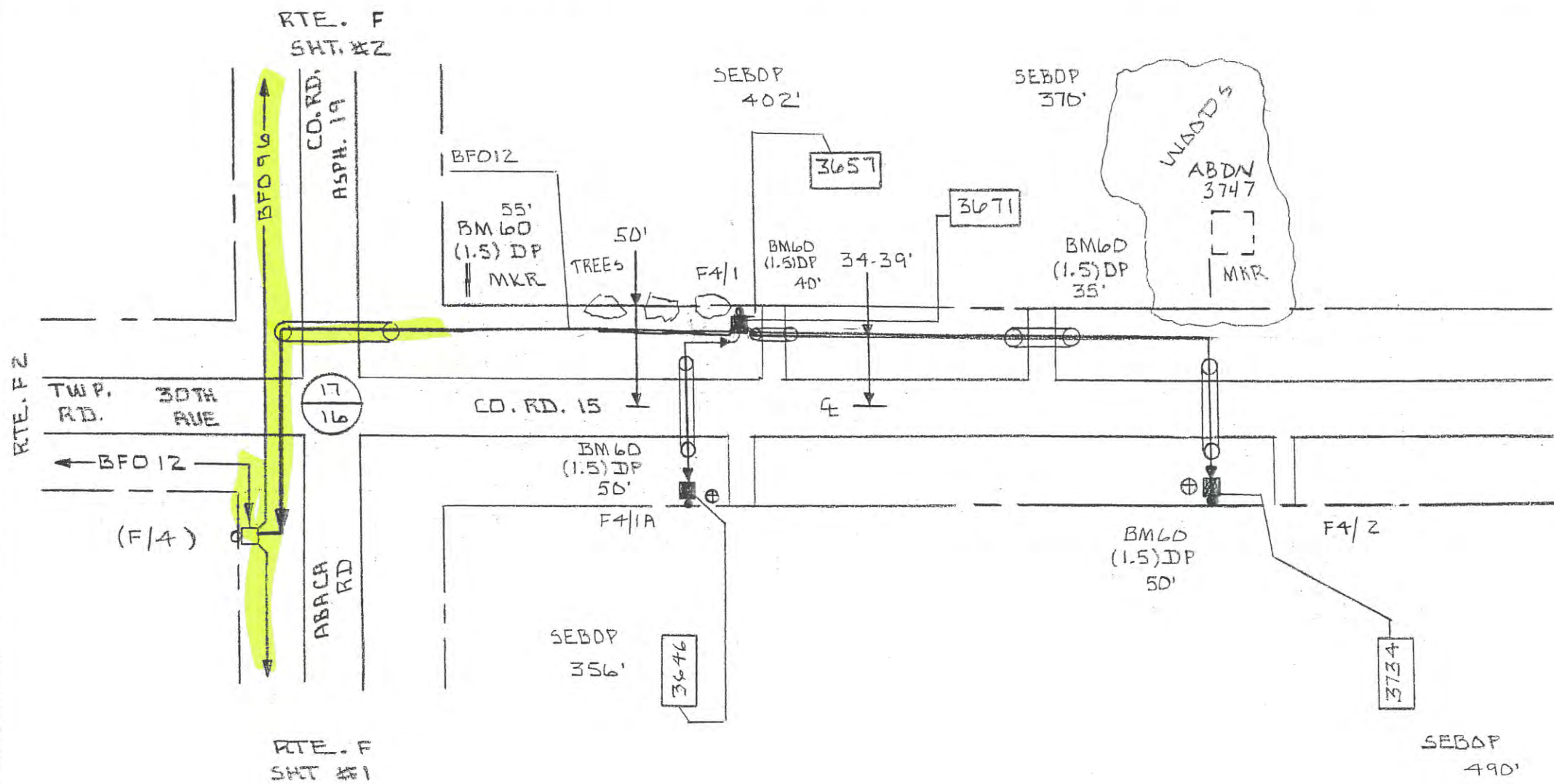


COUNTY MORRISON

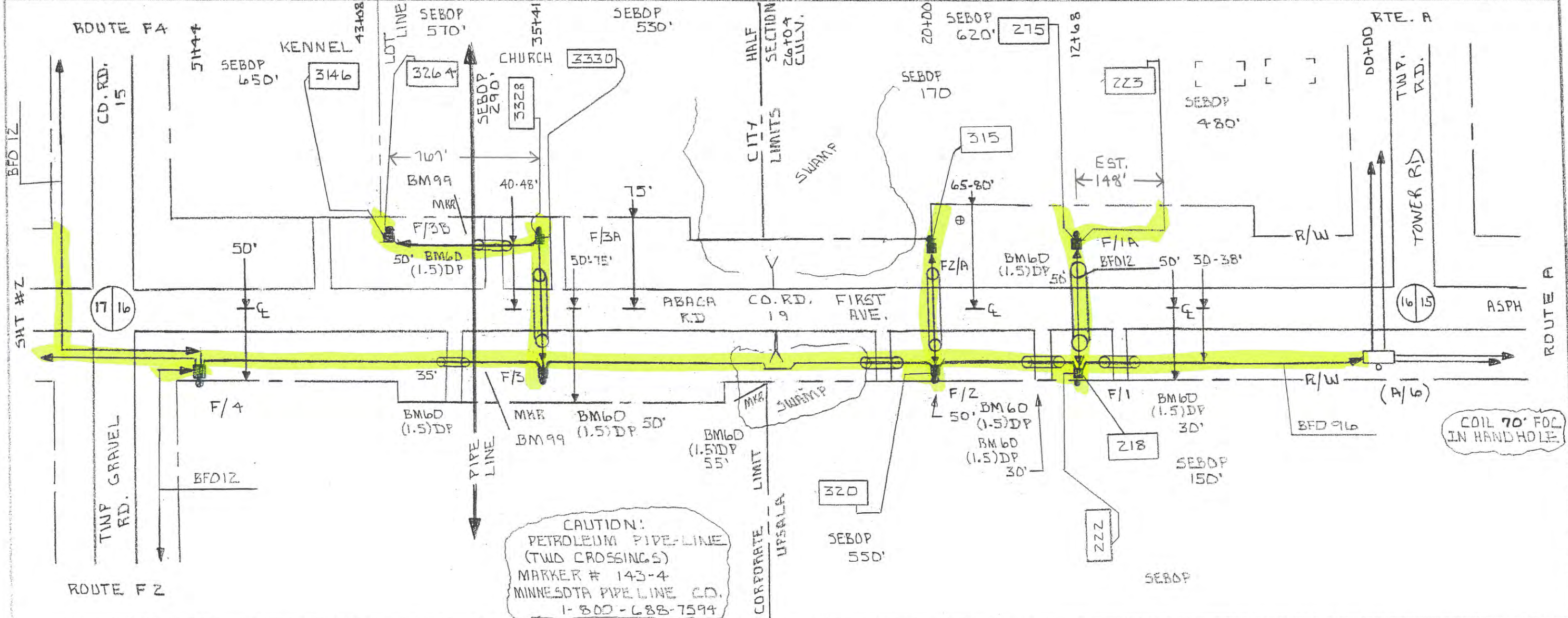
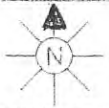
SEC 17-16 STAKED BY LM  
 TWP 127N DATE 12-09  
 RGE 31W REL REV. PROJECT

EXCHANGE UPSALA  
 STAKING SHEET AND PLANT RECORD

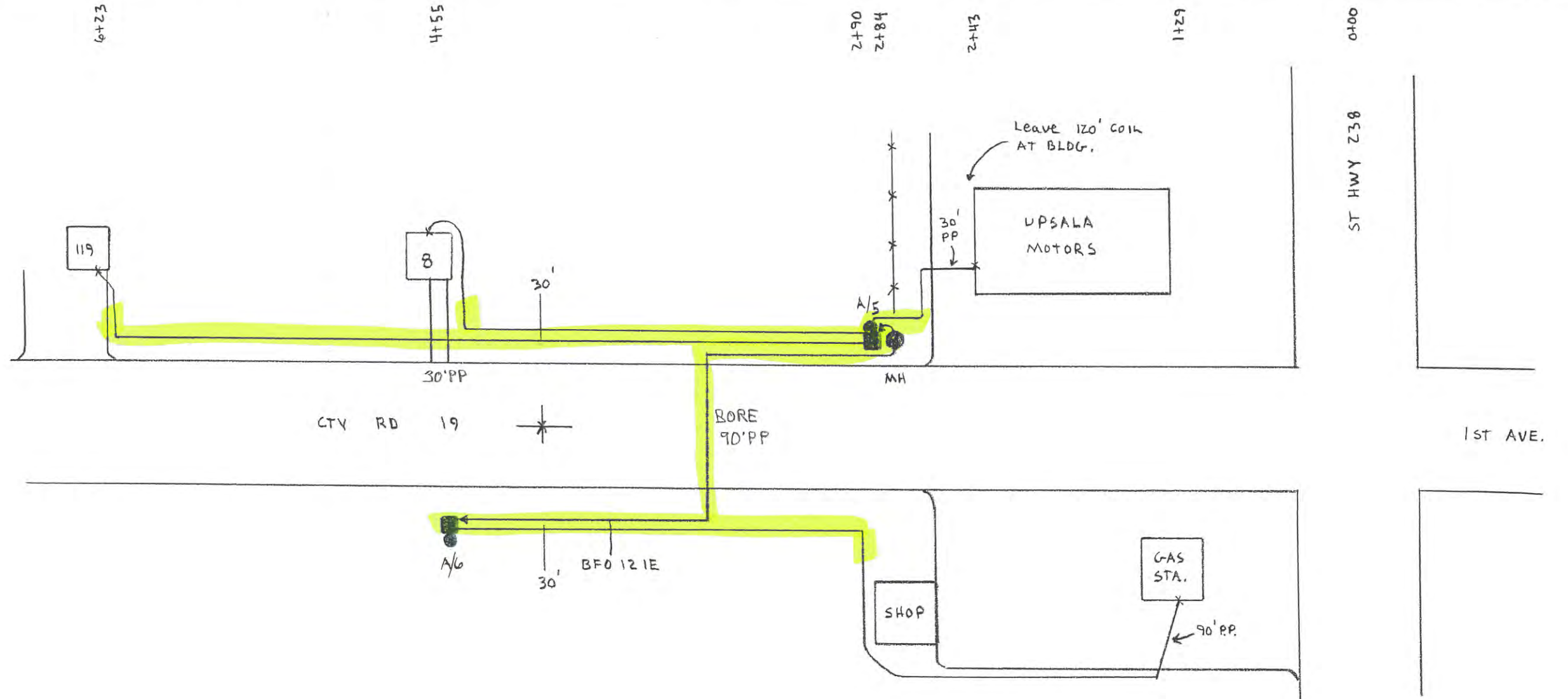
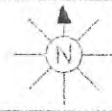
LEAD F4  
 SHEET 1 OF 1  
 MAP REF.



PED OR STAP	MED		POLR		MISC				SPLICE		CABLE		MISC NOTES
	BD	BA	BDO	BDD	BMZ	BM	BMLD	BM	HD-1	BFD	SEBDP	N/D	
(F/4)		23	8A	6A	5/8x8	53	(1.5)DP	83		12	4	FD	
		(1)	(1)				55						
F4/1		1	1		1	1	40	1	3	970	402	1	3657
											370	1	3671
											356	1	3646
F4/1A		1	1		1		50		1	166			
							35						
F4/2		1	1		1		50	1	1	686			
								1			490	1	3734
TOTAL		3	3		7	2	230	4	5	1822	1618	4	



LINE OR STAKE	PED				MISC				SPLICE				CABLE				MISC. NOTES
	BD	BA	BDO	BDO	BMZ	BM	BM60	BM	BM	HD-1	BFO	BFO	SEBOP	N/D	FO		
(A/6)		23	8A	6A	5/8x8	53	(1.5)DP	83	99		96	12	A				
F/1		1	1				30			5	1348		150	1	218		
F/1A		1		1			50			2		130	480	1	223		
F/2		1	1				30			2	772		620	1	275		
F/2A		1		1			50			1		130	550	1	320		
F/3		1	1				55			5	1598		170	1	315		
F/3A		1		1			50		1	2		130	290	1	3328		
F/3B		1		1			50		1	2		802	530	1	3320		
F/4		1	1				35			8	1656		570	1	3264		
TOTAL		8	4	4		18	2	350	10	2	5374	1192	4380	10			



PED OR STA#	PED		POLE		BM		MISC.				SPLICE		CABLE			MISC. NOTES
	BD	BA	60 (1.5)DP	83	2 (5/8)X6					H0 -1	BFO 12 IE		SEBOP	NID (FO)		
A/5	(08)	(23)								15						
UPSALA MOTORS			30	1	1								230	1		
8				1	1								340	1		
119				1	1								500	1		
A/6	(08)	(23)							1		300					
GAS STA.			90	1	1								610	1		
TOTAL			120	4	4				16		300		1680	4		