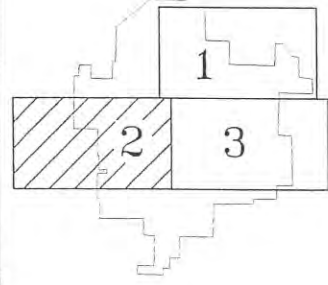


16
GREY EAGLE
TWP.

ELMDALE
TWP.

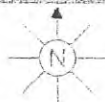
KRAIN
TWP.



PROJECT NO.	UPSALA CO-OP TELEPHONE ASS'N UPSALA STAKING KEY 2 OF 3			ISS. NO.
602	DRAWN BY: RLK	DATE: 8-26-02	SCALE: NTS	MAP NO. UPSLXT02
	FINLEY ENGINEERING COMPANY, SLAYTON, MN. 56172 (507)-777-2000			FILE: 602/UPSALA
				04

2011 FIBER

N



COUNTY MORRISON

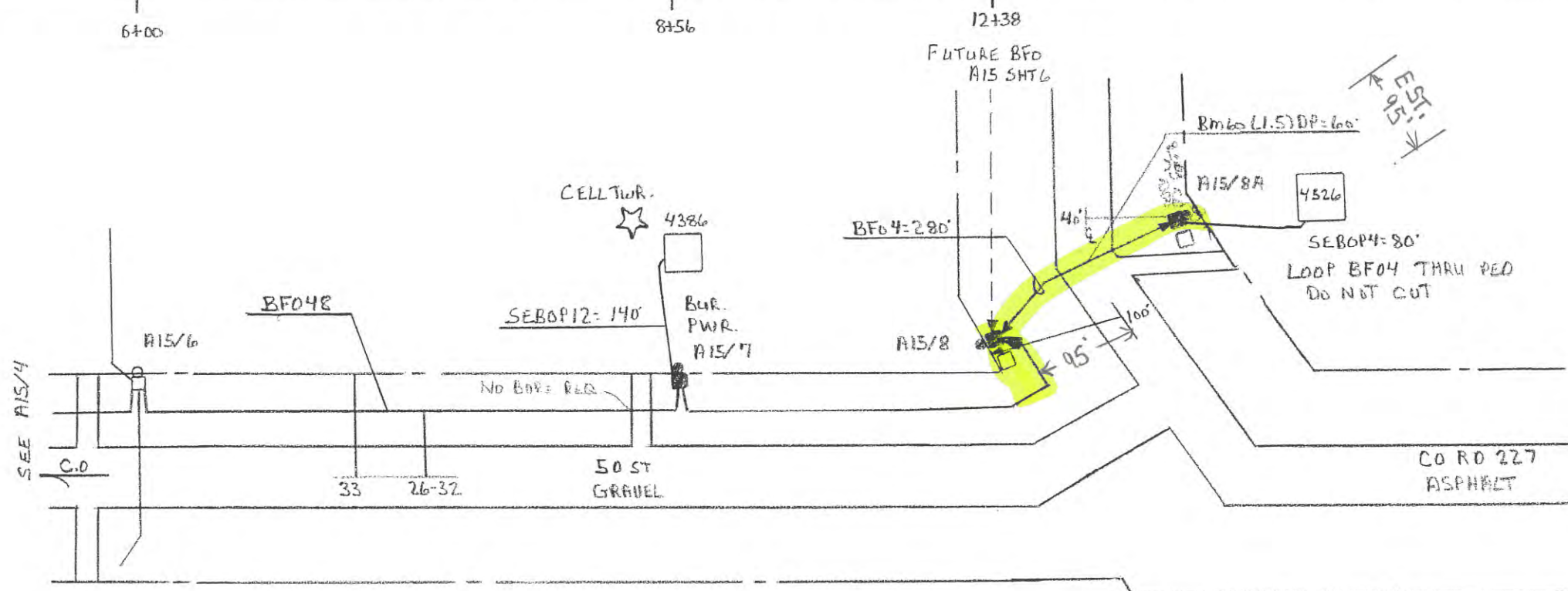
SET 3
TWP. 127N
RGE. 31W

STAKED BY FEL
DATE 12/09
REL
REV

PROJECT

EXCHANGE UPSALA
STAKING SHEET AND PLANT RECORD

LEAD AIS
SHEET 5 OF 5
MAP REF.



POI	SET	POLI	MISC				NO.	CABLE		MISC NOTES			
NO.	BA	BDO	BDO	Bm2	Bm60		BFO	BFO	BM	SEBOP	SEBOP	NID	
(AIS/6)	23	4A	2A	58x8	(1.5)DP		4	48	83	4	12	(FO)	
AIS/7	1		1	1		6		896			140	1	4386 CELL TOWER
AIS/8	1		1	1		1		422					
AIS/8A	1	1		1	60		280		1	80		1	4526
TOTAL	3	1	2	5	60	7	280	1318	2	80	140	2	