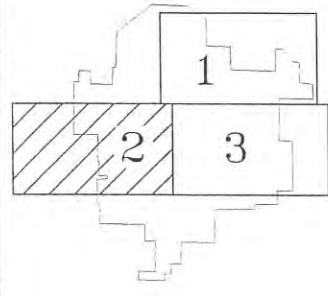


16
GREY EAGLE
TWP.

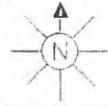
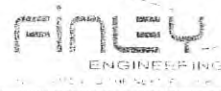
ELMDALE
TWP. 8

KRAIN
TWP.



PROJECT NO.	UPSALA CO-OP TELEPHONE ASS'N UPSALA STAKING KEY 2 OF 3			ISS. NO.
602	DRAWN BY: RLK	DATE: 8-26-02	SCALE: NTS	MAP NO. UPSLXT02
	FINLEY ENGINEERING COMPANY, SLAYTON, MN. 56172 (507)-777-2000			FILE: 602/UPSALA
				04

2011 FIBER



COUNTY MORRISON

SEP 30 STAKED BY FEC

TWP 127N DATE 1-10

RGE 31W REL REV PROJECT

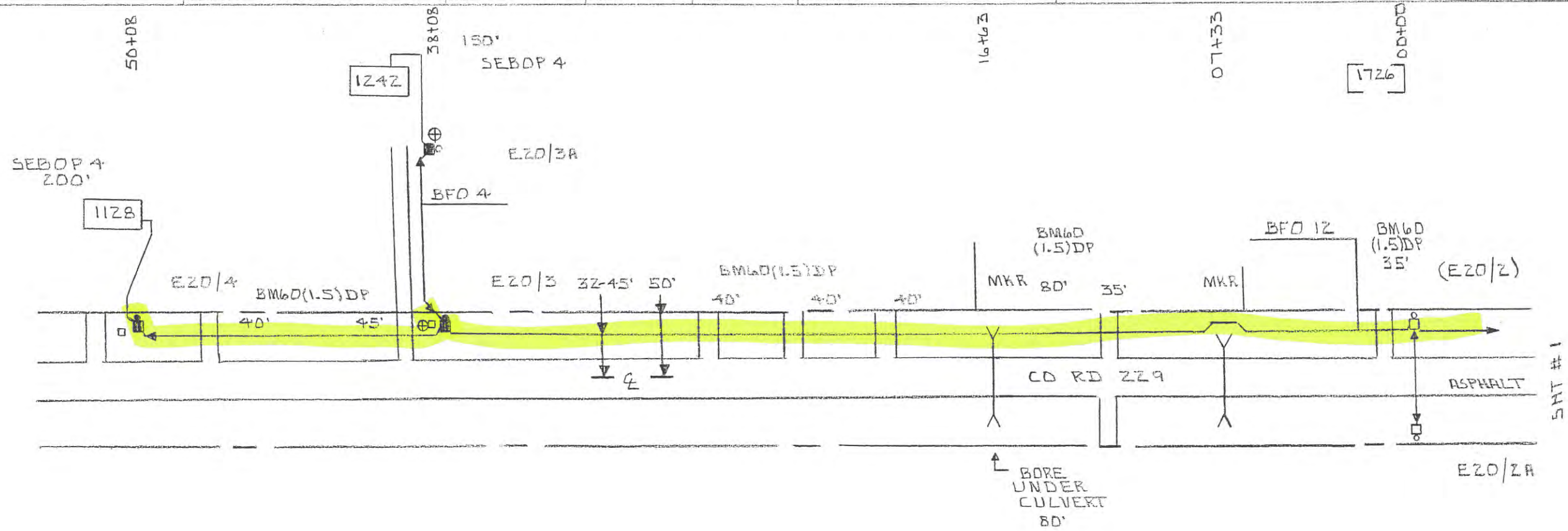
EXCHANGE LPSALA

STAKING SHEET AND PLANT RECORD

LEAD E 20

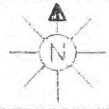
SHEET 2 OF 2

MAP REF.

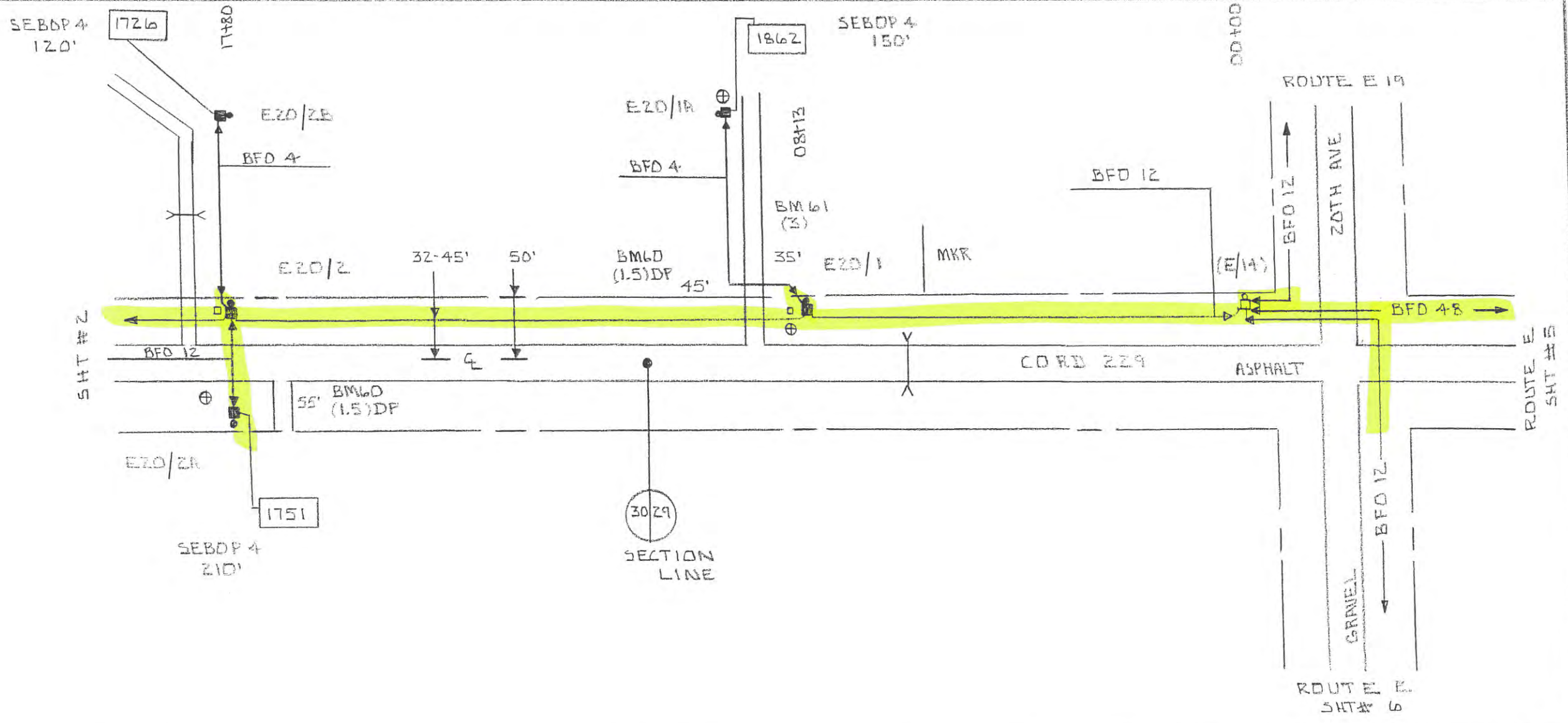


SHT #1

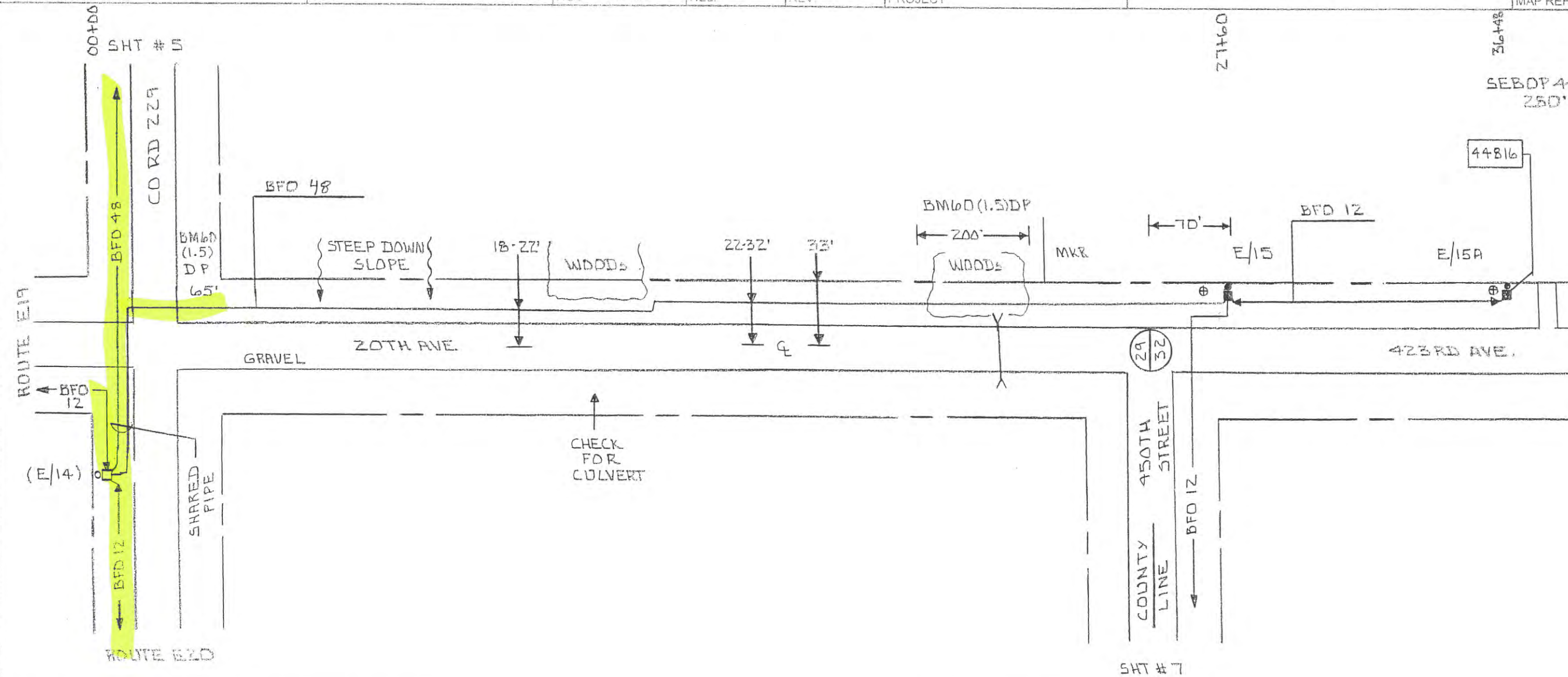
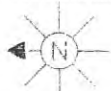
PED OR STA#	PED POLE		MISC					SPLICE		CABLE		N/D FD	MISC. NOTES
	BD	BA 23	BDO 6R	BDO 4R	BM 2 5/8x8	BM 53	BM 60 (1.5)DP	BM 83	HO-1	BFD 12	BFD 4		
(E20/2)		(1)	(1)				35						
							1 35						
							1 80						
							40						
							40						
							40						
E20/3		1	1		1			1		3908			
E20/3A		1		1	1			1		1108	150		1 1242
E20/4		1	1		1		45	1		1264			
					1		40				200		1 1128
TOTAL		3	2	1	5	2	355	2	3	5172	1108	350	2



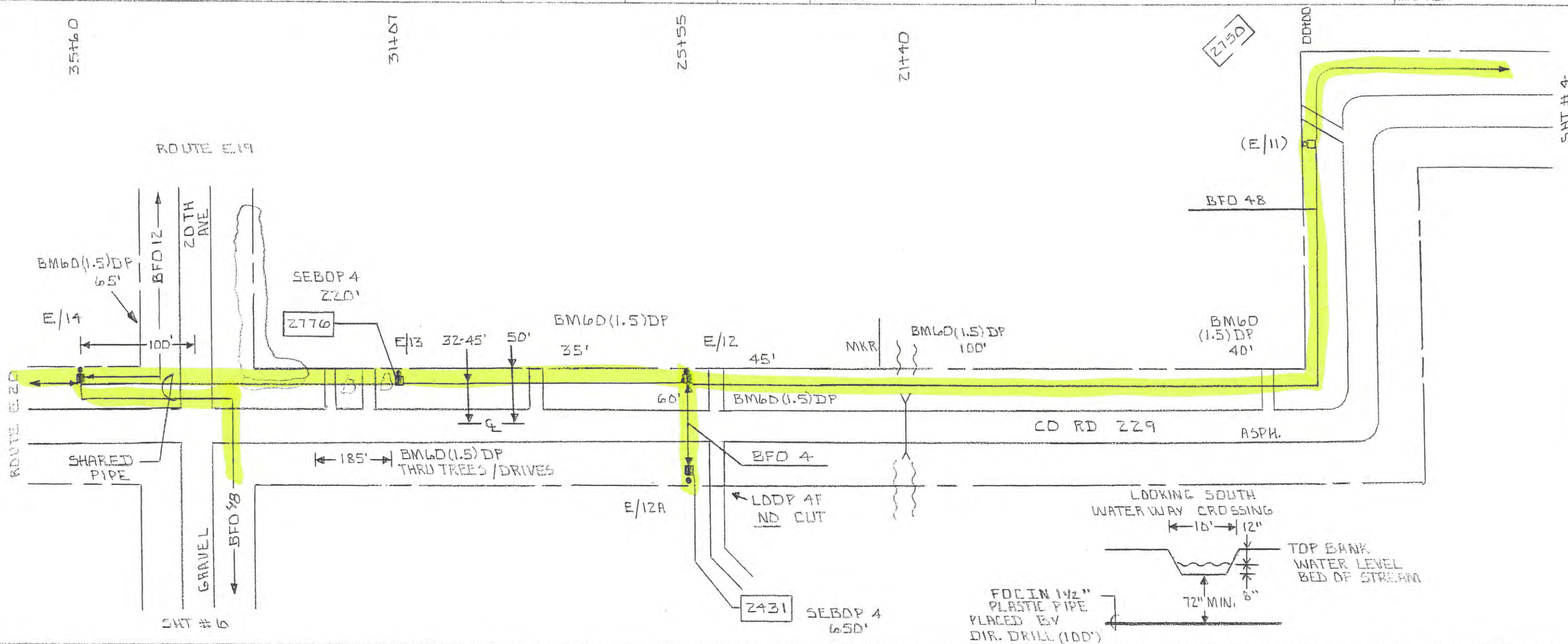
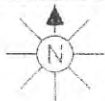
SEC 29-30	STAKED BY FEC	EXCHANGE LPSALA	LEAD E2D
TWP 127 N	DATE 1-10	STAKING SHEET AND PLANT RECORD	SHEET 1 OF 2
COUNTY MDRRISON	RGE. 31 W	PROJECT	MAP REF.



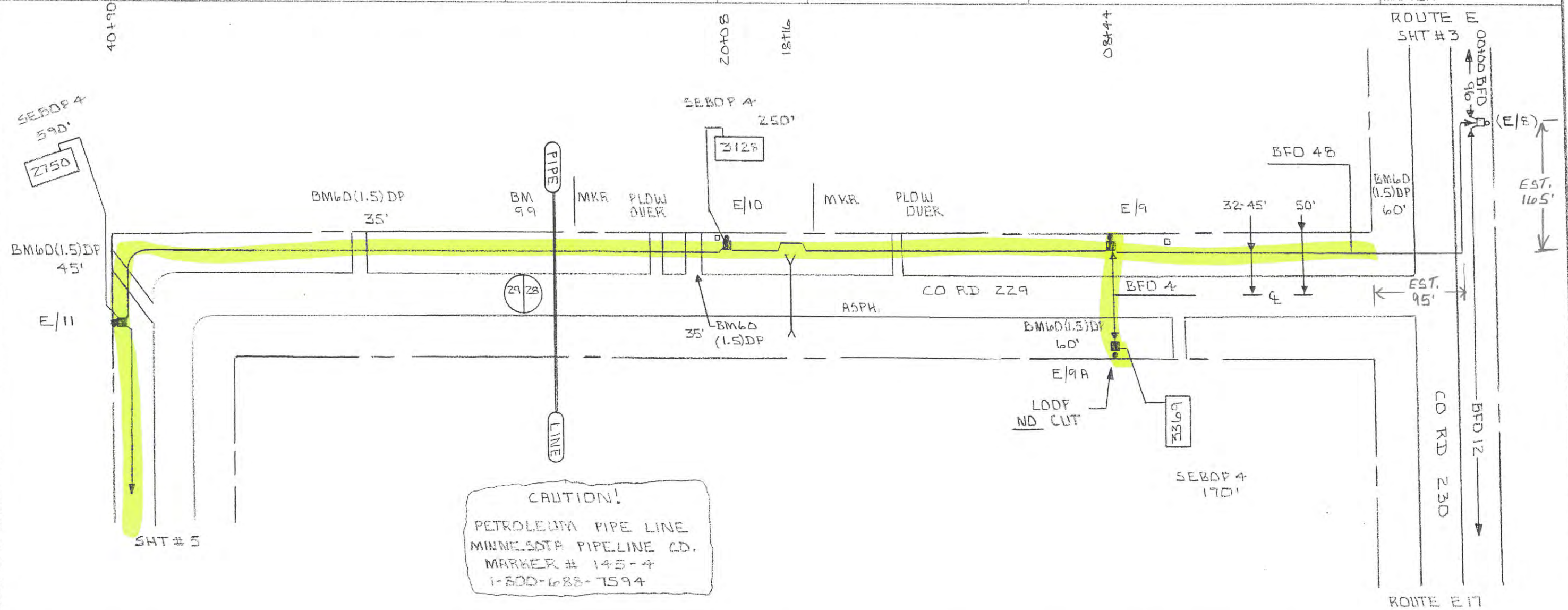
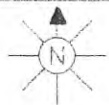
E2D SHT	ED	POLE	MISC				SPUR				CABLE				MISC. NOTES	
			B4 23	BDO 8A	BDO 6A	BDO 4A	BM2 5/8x8	BM 53	BM60 (1.5)DP (3)	BM 83	RD-1	BFO 12	BFO 4	SEBOP 4		NID FD
(E/14)			(1)	(1)												
E2D/1							1				872					
E2D/1A								35				680			1862	
E2D/2								45		2	1030					
E2D/2A								55			130					
E2D/2A									1				210		1751 METER ON ASE.	
E2D/2B												770				
E2D/2B									1				120		1726	
TOTAL			5	3	2		7	1	100	35	3	6	2032	1450	480	3



PED DP STR	PED		POL		MISC				SPICE		CABLE				MISC NOTES
	30	BA 23	BDD BA	BDD 6A	BM 53	BM 53	BM 60 (1.5) DP	BM 83	HO-1	BFD 12	BFO 48	SEBOP 4	NID FD		
(E/14)		(1)	(1)				65								
E/15		1	1		1		200		21		2966				
E/15A		1		1				1		930		280	1	44816	
TOTAL		2	1	1		3	265	1	22	930	2966	280	1		



PED OR STAKE	PED		MISC				SPLICE		CABLE			MISC NOTES			
	BD	POLE	BA 23	BDO 3A	BDO 6A	BM 5/8X3	BM 53	BM 83	HD-1	BFO 48	BFO 4		SEBOP 4	NID PD	
(E/11)		(1)	(1)												
E/12										2648					
E/12A											140				
												650	1 2431		
E/13															
E/14															
TOTAL		4	3	1		6	1	530	2	17		3778	140	870	2



CAUTION!
PETROLEUM PIPE LINE
MINNESOTA PIPELINE CO.
MARKER # 145-4
1-800-688-7594

PED OF STA#	PED POLE			MISC						SPLICE		CABLE			MISC. NOTES
	BD	BA 23	BDO 8R	BDO 6R	BMZ 518X8	BM 53	BM6D (1.5)DP	BM 83	BM 99	HO-1	BFD 48	BFD 4	SEBOP 4	NID FO	
(E/8)		(1)	(1)												
E/9		1	1				60				902				
E/9A		1		1				1			130		170	1 3369	
E/10		1	1								1120		250	1 3128	
E/11		1	1				35 45		1		2158		590	1 2750	
TOTAL		4	3	1		7	2	140	3	1	3		1010	3	