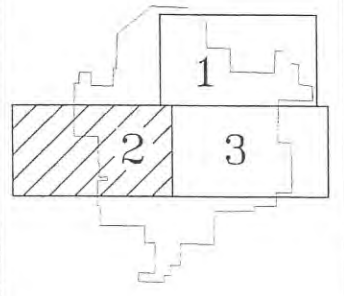


16  
GREY EAGLE  
TWP.

ELMDALE  
TWP. 8

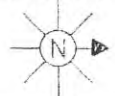
KRAIN  
TWP.



PROJECT NO.	UPSALA CO-OP TELEPHONE ASS'N UPSALA STAKING KEY 2 OF 3			ISS. NO.
602	DRAWN BY: RLK	DATE: 8-26-02	SCALE: NTS	MAP NO. UPSLXT02
	FINLEY ENGINEERING COMPANY, SLAYTON, MN. 56172 (507)-777-2000			FILE: 602/UPSALA
				04

2011 FIBER



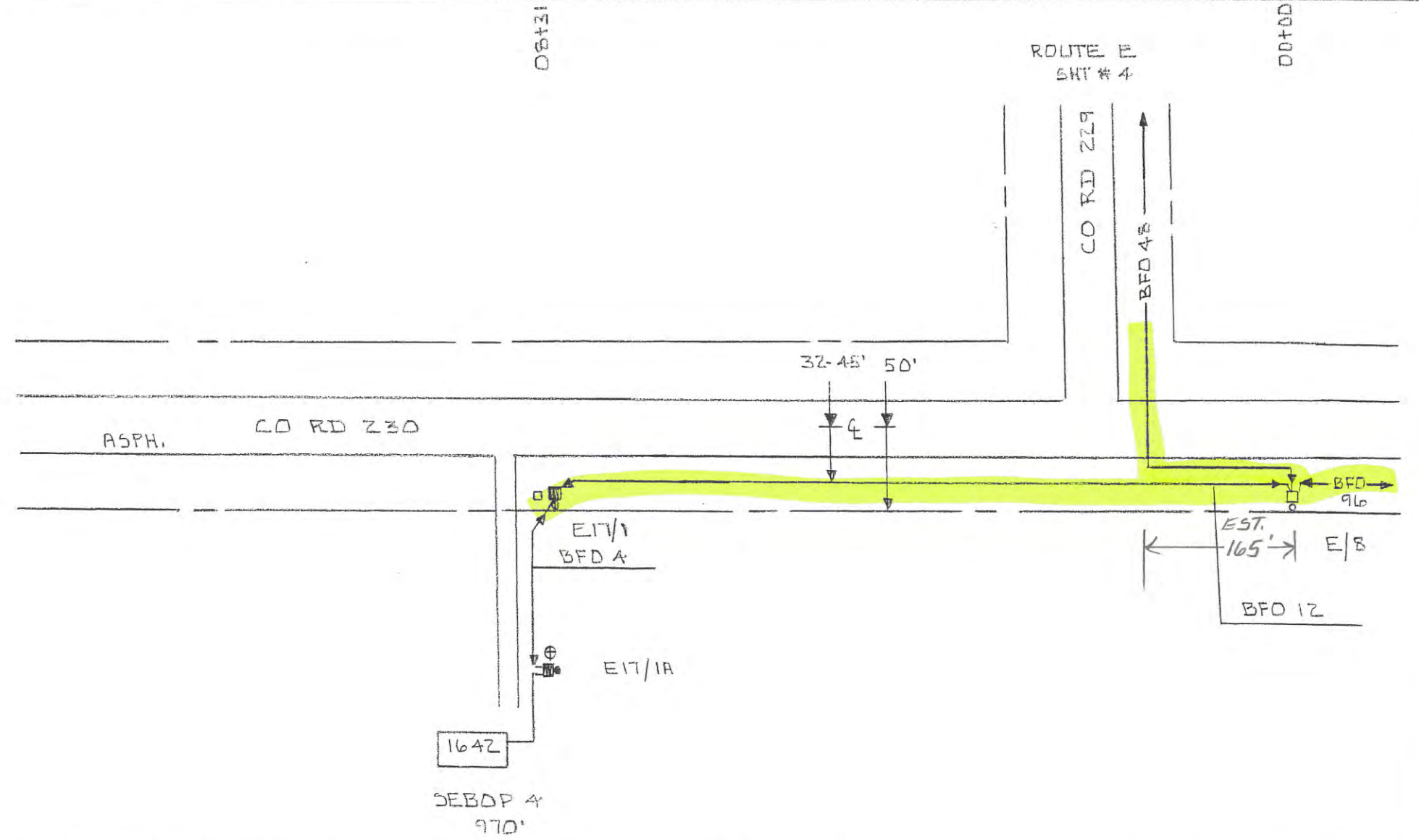


COUNTY MADISON

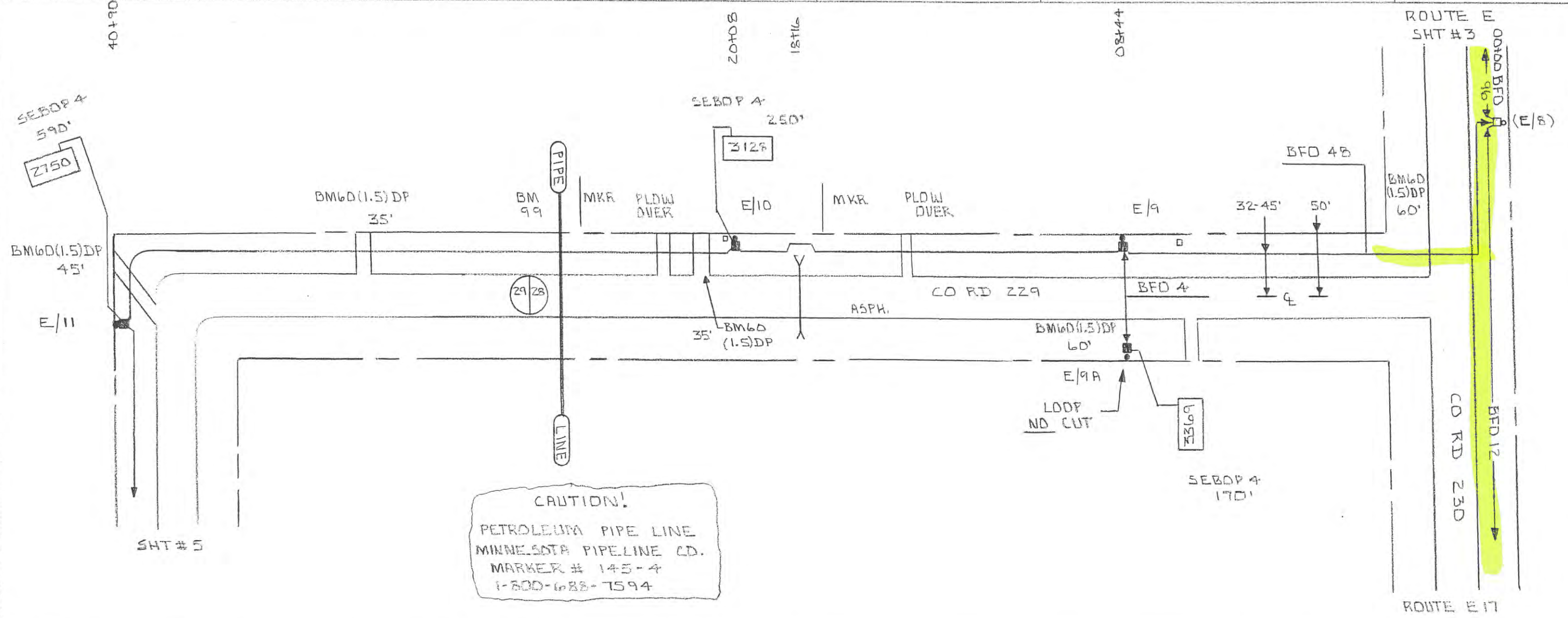
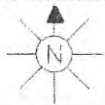
SEC 28 STAKED BY FEC  
 TWP 12TN DATE 1-10  
 RGE 31W REL REV PROJECT

EXCHANGE UPSRLA  
 STAKING SHEET AND PLANT RECORD

LEAD E17  
 SHEET 1 OF 1  
 MAP REF

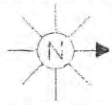
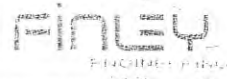


PED OR STAR	PED POLE		MISC				BM	HD-1	SPLICE		CABLE			NID	FO	MISC. NOTES
	BD	BA	BDD	BDD	BDD	BMZ			BFD	BFD	SEBOP					
(E/S)		23	8A	6A	4A	5/8x8	83			12	4	4				
E17/1		1		1						890						
E17/1A		1			1	1	1				660	340		1	1642	
TOTAL		2		1	1	3	1		2	890	660	340		1		



**CAUTION!**  
PETROLEUM PIPE LINE  
MINNESOTA PIPE LINE CO.  
MARKER # 145-4  
1-800-688-7594

PED OR STA#	POLE				MISC					SPLICE		CABLE				MISC. NOTES
	BD	BA 23	BDD 8A	BDO 6A	BM 2 5/8 X 8	BM 53	BM 6D (1.5) DP	BM 83	BM 99	HO-1	BFD 48	BFD 4	SEBOP 4	NID FD		
(E/8)		(1)	(1)													
E/9		1	1		1		60			1	902					
E/9A		1		1	1			1			130	170	1	3369		
E/10		1	1		1					1	1120					
					1			1				250	1	3128		
E/11		1	1		1		35 45		1	1	2158					
					1			1				590	1	2750		
TOTAL		4	3	1	7	2	140	3	1	3	4180	130	1010	3		

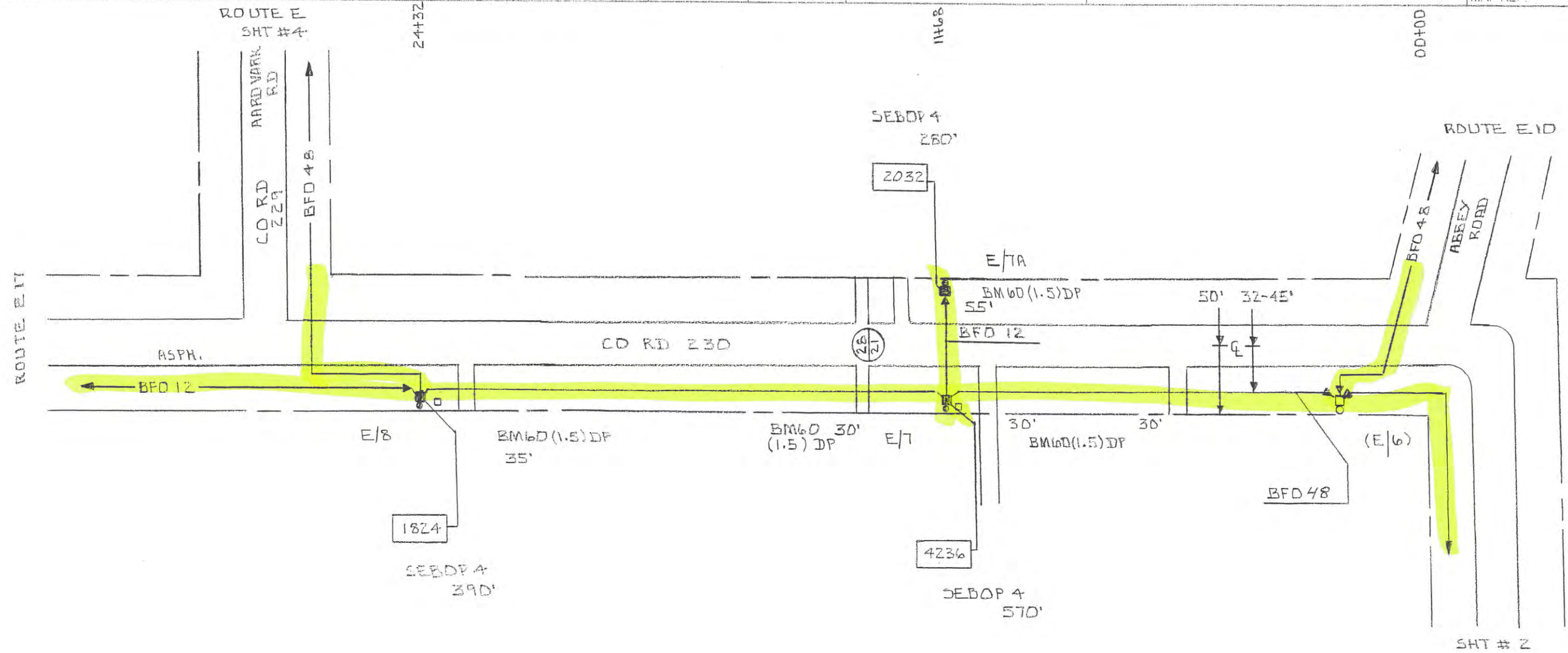


COUNTY MORRISON

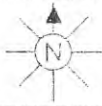
SEC 21-28 STAKED BY FEC  
 TWP 127N DATE 1-10  
 RGE 31W REL. REV. PROJECT

EXCHANGE UPSALA  
 STAKING SHEET AND PLANT RECORD

LEAD E  
 SHEET 3 OF 8  
 MAP REF.



P.O. OF STAKE	POLE		MISC				SPI 5.0		CABLE			MISC. NOTES	
	BD	BA	BDD	BDD	BM2	BM60	HD-1	BFD	BFD	SEBOP	NLD		
(E/6)		23	BA	BA	5/8 XS	(1.5) DP			48	12	4	FD	
						30							
E/7		1	1		1	30	2		1240				
E/7A		1		1	1	55	1			126	570	1	4236
					1		1				280	1	2032
						30							
E/8		1	1		1	35	4		1332				
					1		1				390	1	1824
TOTAL		3	2	1	6	180	7		2572	126	1240	3	

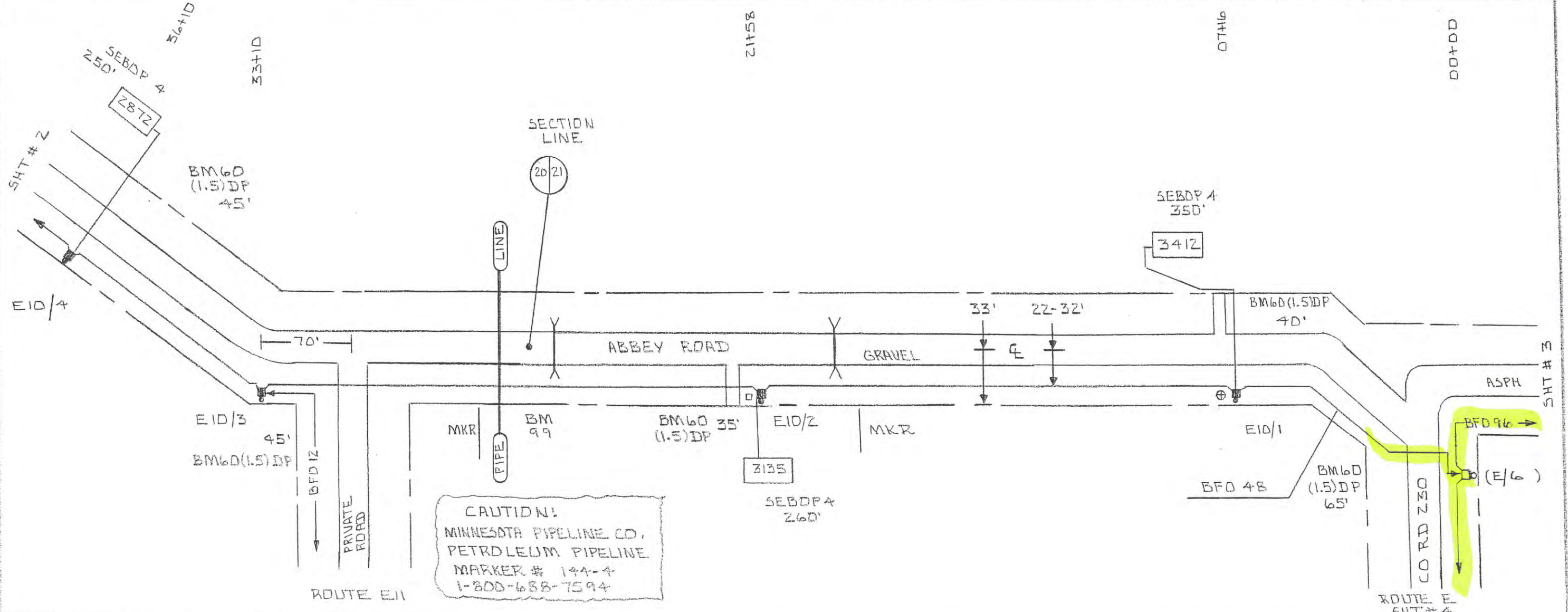


COUNTY MORRISON

SEC 20-21 STAKED BY FEC  
TWP 127N DATE 1-10  
RGE 31W REL REV PROJECT

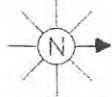
EXCHANGE LPSALA  
STAKING SHEET AND PLANT RECORD

LEAD E10  
SHEET 1 OF 4  
MAP REF



**CAUTION!**  
MINNESOTA PIPELINE CO.  
PETROLEUM PIPELINE  
MARKER # 194-4  
1-800-688-7594

SEC OF SPAN	ED POLE		MIS.						CABLE		MISC. NOTES		
	BD	BA	BDD	BA2	BM	BM60	BM	BM	HD-1	BFD		SEBDP	NID
(E/6)		73 (1)	8A (1)	5/8X8	53	(1.5)DP	83	99					
E10/1		1	1	1		65			1	836			
E10/2		1	1	1		40			1	1502	350	1	3412
E10/3		1	1	1	1	35					260	1	3135
E10/4		1	1	1		45		1		1206			
		1	1	1		45			1	346			
		4	4	7	2	230	3	1	7	3890	250	1	2872
											860	3	

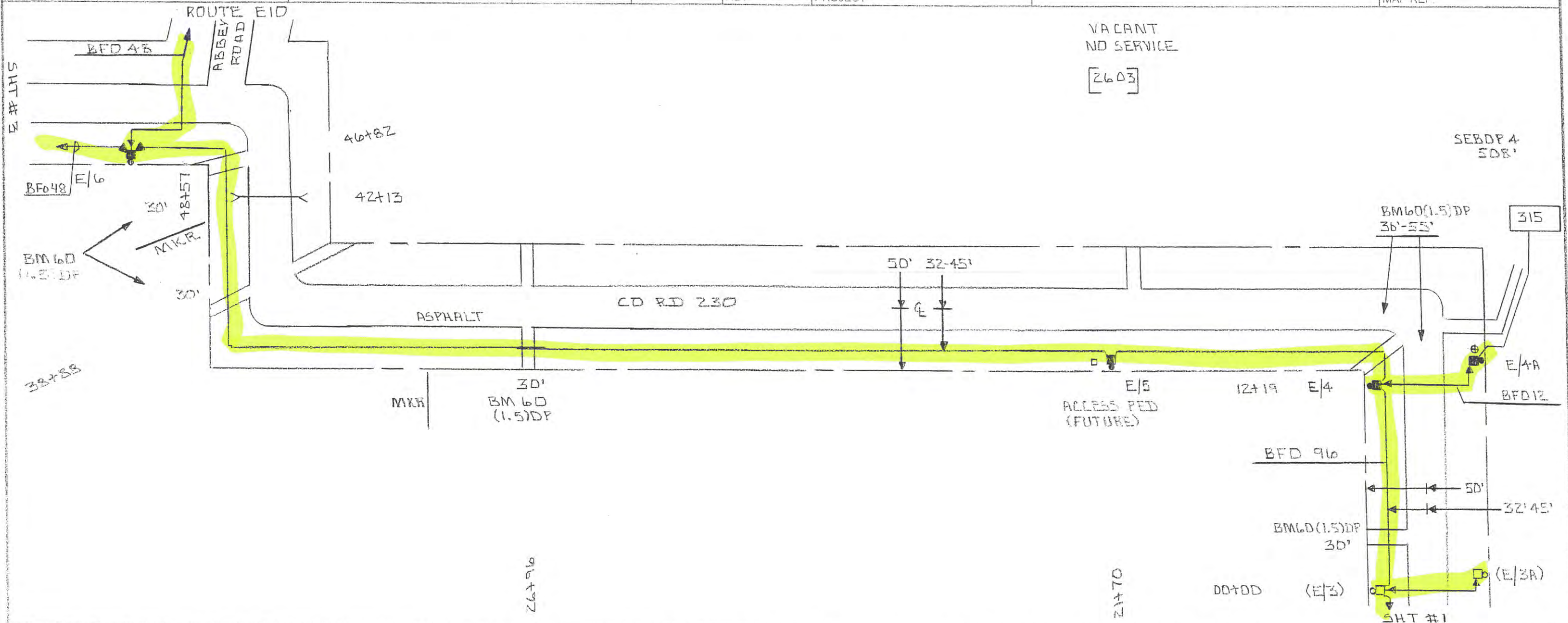


COUNTY MORRISON

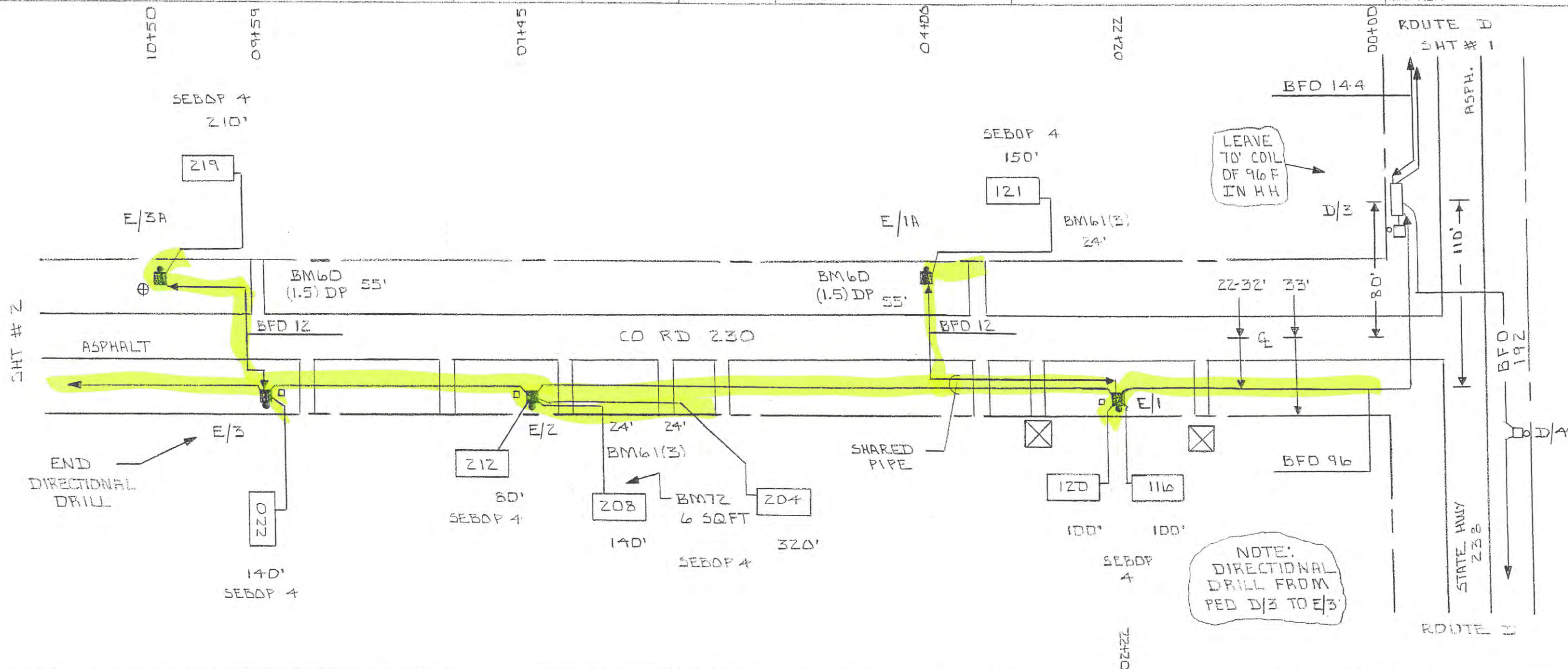
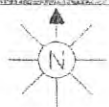
SEC 21 STAKED BY FEL  
 TWP 127N DATE 1-10  
 RGE 21W REL REV PROJECT

EXCHANGE UPSALA  
 STAKING SHEET AND PLANT RECORD

LEAD E  
 SHEET 2 OF 8  
 MAP REF.



PED OF STA#	RED POLE		MISC					SPLIC		CABLE				MISC NOTES
	BD	BA 23	BDD 8A	EDD 6A	BM2 5/8x8	BM 53	BM 60 (1.5)DP 30	BM 83	HD-1	BFD 96	BFD 12	SEBDP 4	NID FD	
(E/3)							30							
E/4		1	1		1			1		1266				
E/4A		1		1	1		55	1		140		508	1 315	
E/5		1	1		1		30			1016				
							30							
E/6		1	1		1		30	84		2868				
TOTAL		4	3	1	5	2	205	86		5150	140	508	1	



PED OR STA#	PED POLE		MISC.				SPICE		CABLE				MISC. NOTES	
	BD.	BA 23	BDD 8A	BDD 6A	BM 5/8X8	BM 60 (1.5) DP	BM 61 (3)	BM 72	BM 83	HD-1	BFD 96	BFD 12		SEBOP 4
(HAND HOLE)														
E/1		1	1		1	340			1	4	420		100	1 116
E/1A		1		1	1	55	24		1	1	268		150	1 121
E/2		1	1		1	540	24		1	3	560		320	1 204
							24	6	1				140	1 208
									1				80	1 212
E/3		1	1		1	232			1	3	252		140	1 220
E/3A		1		1	1	55			1	1	184		210	1 219
TOTAL		5	3	2	5	1222	72	6	8	12	1232	452	1240	8