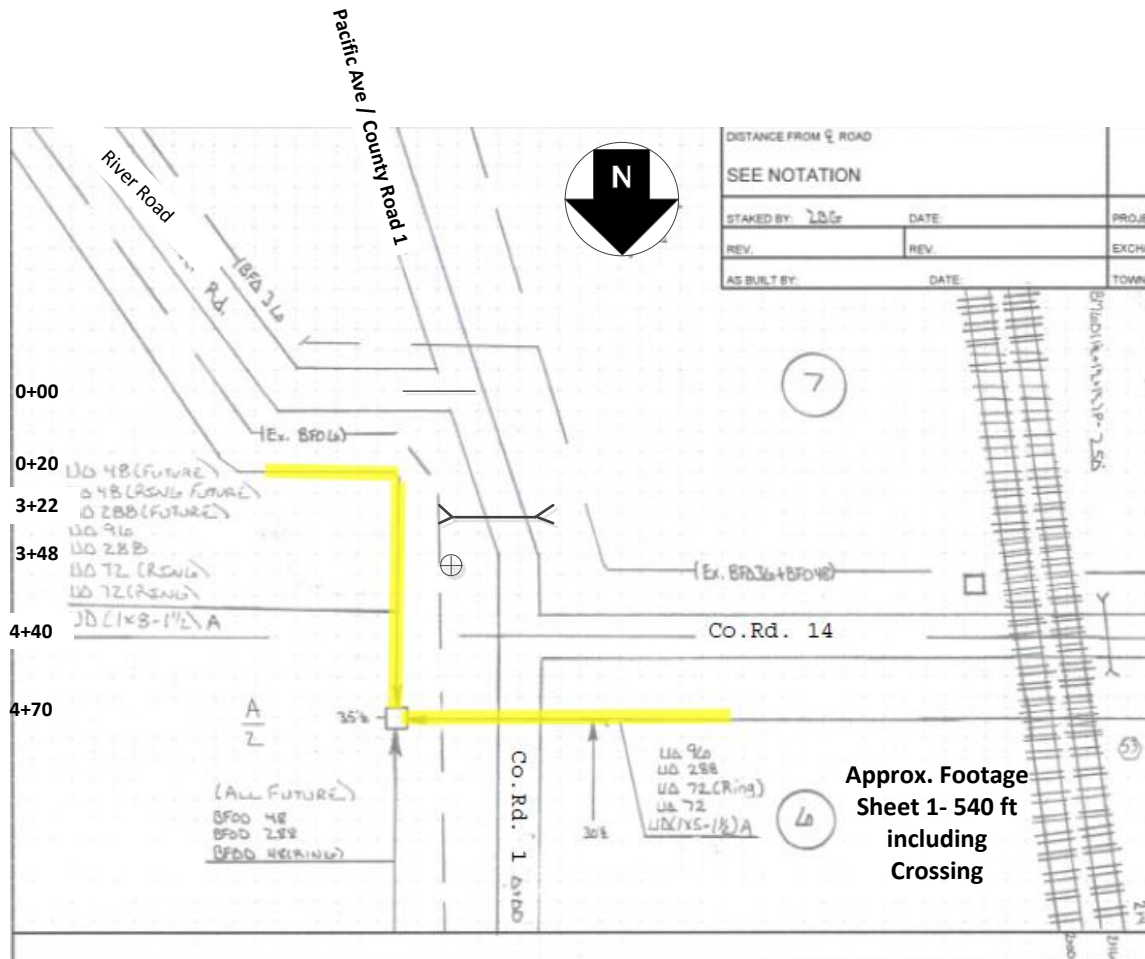


Randall, Proposed Route Highlighted in Yellow County Road 1



Randall
T 130 N
R 30 W
S 6, 7

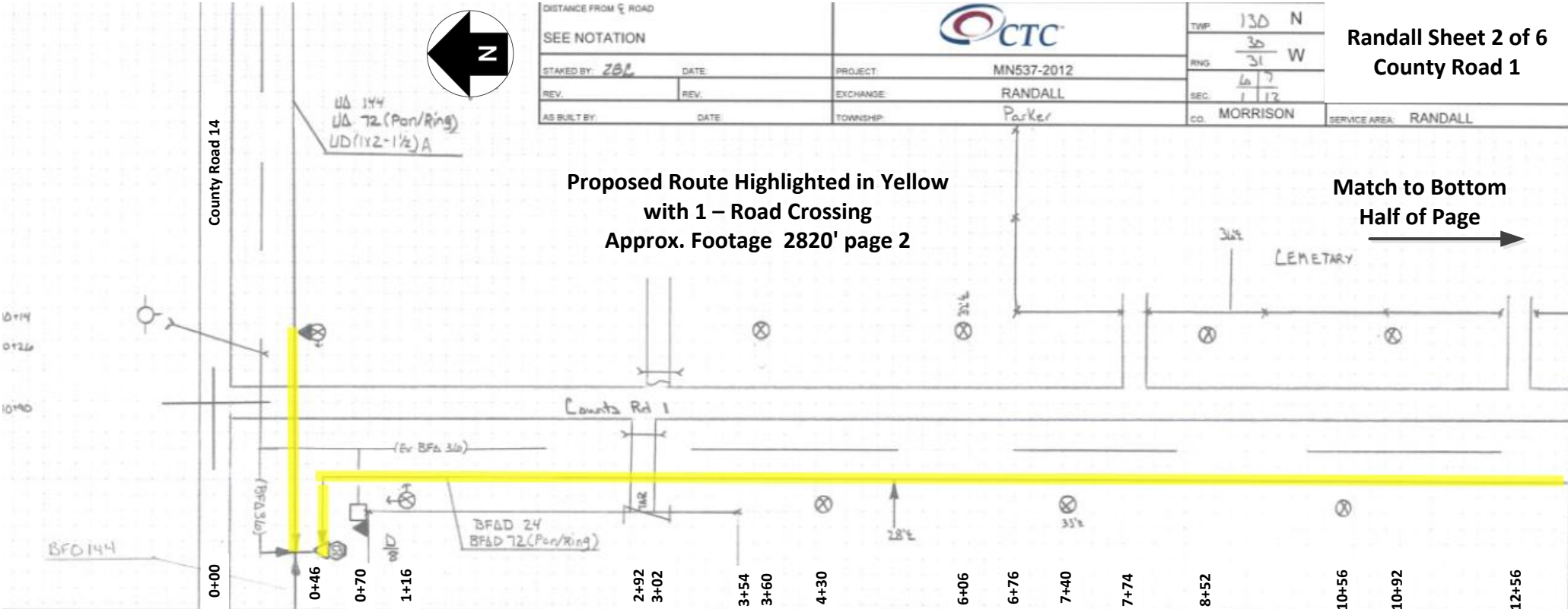
Approx. Footage
Sheet 1- 540 ft
including
Crossing

DISTANCE FROM E ROAD		SEE NOTATION		PROJECT: MN537-2012		TWP: 130 N
STAKED BY: ZBL		DATE:	EXCHANGE: RANDALL		RNG: 30 W	
REV.		REV.	TOWNSHIP: Parker		SEC: 12	
AS BUILT BY:		DATE:	CO: MORRISON		SERVICE AREA: RANDALL	

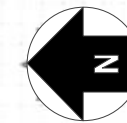


Proposed Route Highlighted in Yellow
with 1 - Road Crossing
Approx. Footage 2820' page 2

Match to Bottom
Half of Page

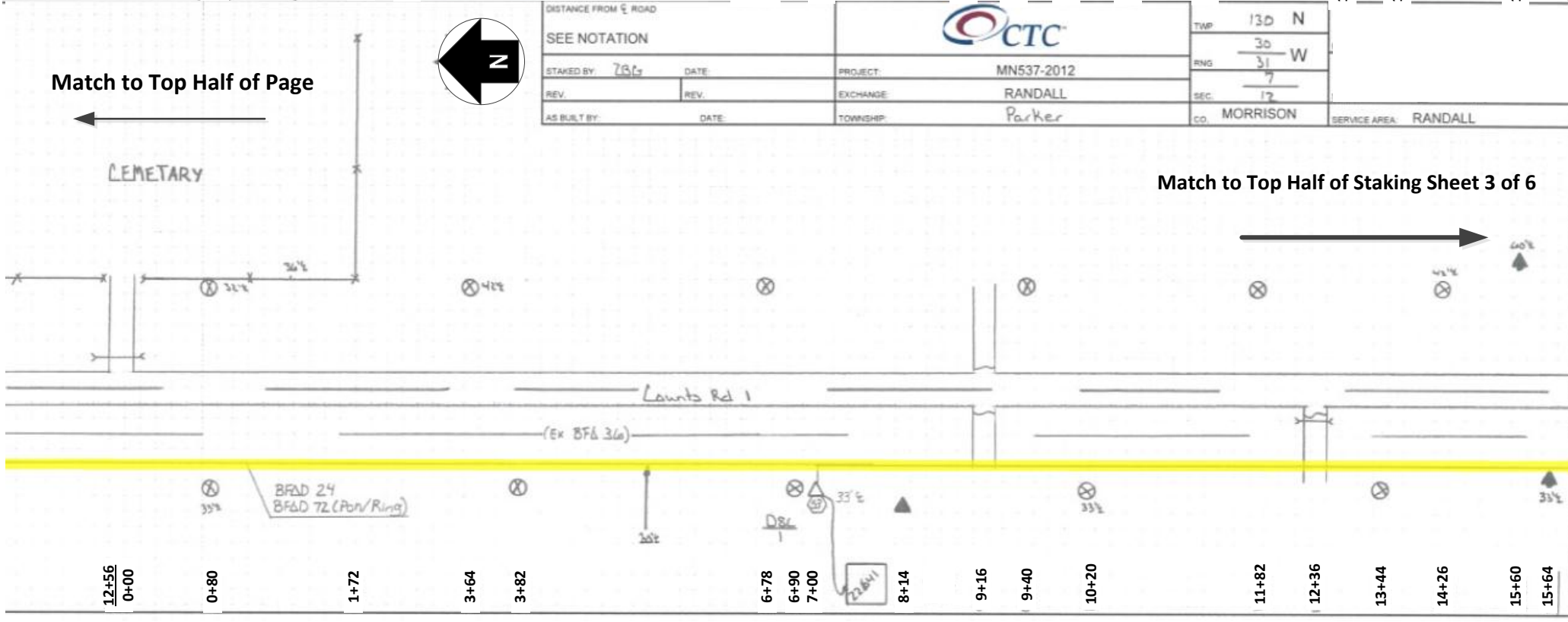


DISTANCE FROM E ROAD		SEE NOTATION		PROJECT: MN537-2012		TWP: 130 N
STAKED BY: ZBL		DATE:	EXCHANGE: RANDALL		RNG: 30 W	
REV.		REV.	TOWNSHIP: Parker		SEC: 12	
AS BUILT BY:		DATE:	CO: MORRISON		SERVICE AREA: RANDALL	



Match to Top Half of Page

Match to Top Half of Staking Sheet 3 of 6



0+14
0+26
0+40

County Road 14

0+00

0+46

0+70

1+16

2+92

3+02

3+54

3+60

4+30

6+06

6+76

7+40

7+74

8+52

10+56

10+92

12+56

12+56

0+00

0+80

1+72

3+64

3+82

6+78

6+90

7+00

8+14

9+16

9+40

10+20

11+82

12+36

13+44

14+26

15+60

15+64



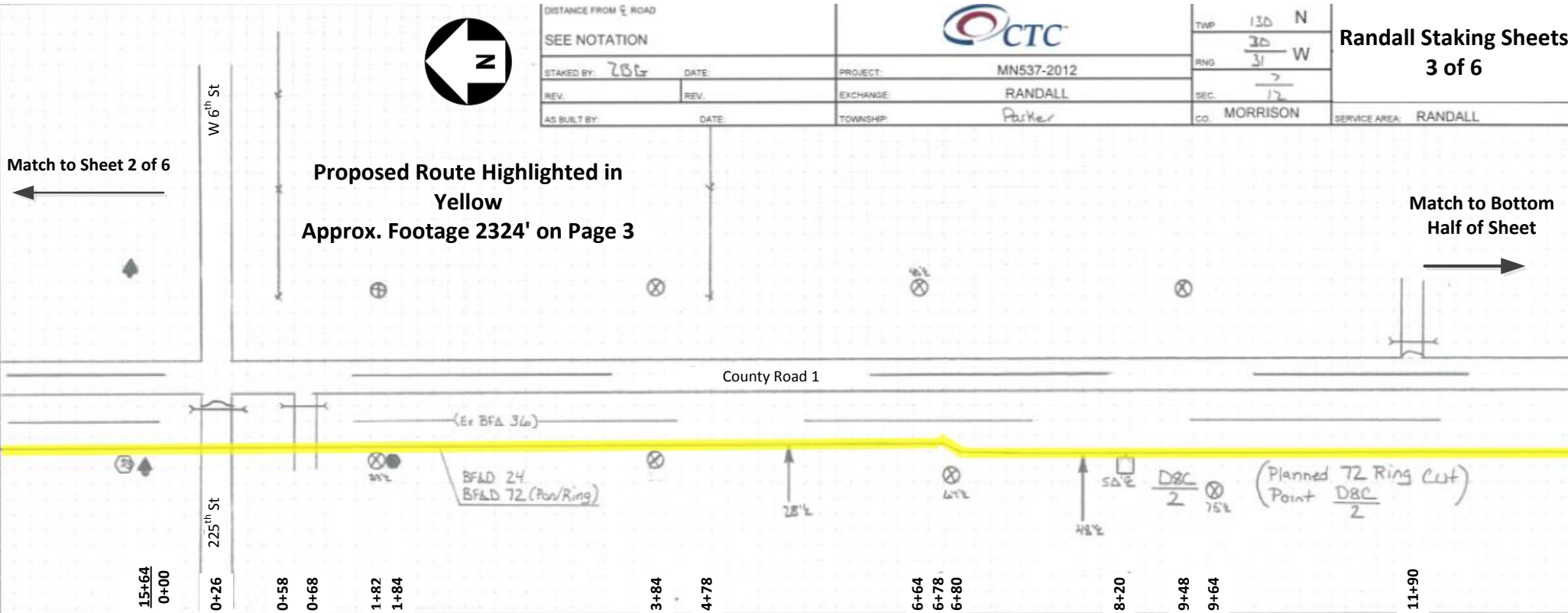
DISTANCE FROM ROAD		TWP 130 N	
SEE NOTATION		RNG 30 W	
STAKED BY: ZBL	DATE:	PROJECT: MN537-2012	SEC. 7
REV.	REV.	EXCHANGE: RANDALL	CO. MORRISON
AS BUILT BY:	DATE:	TOWNSHIP: Parker	SERVICE AREA: RANDALL



Proposed Route Highlighted in Yellow
Approx. Footage 2324' on Page 3

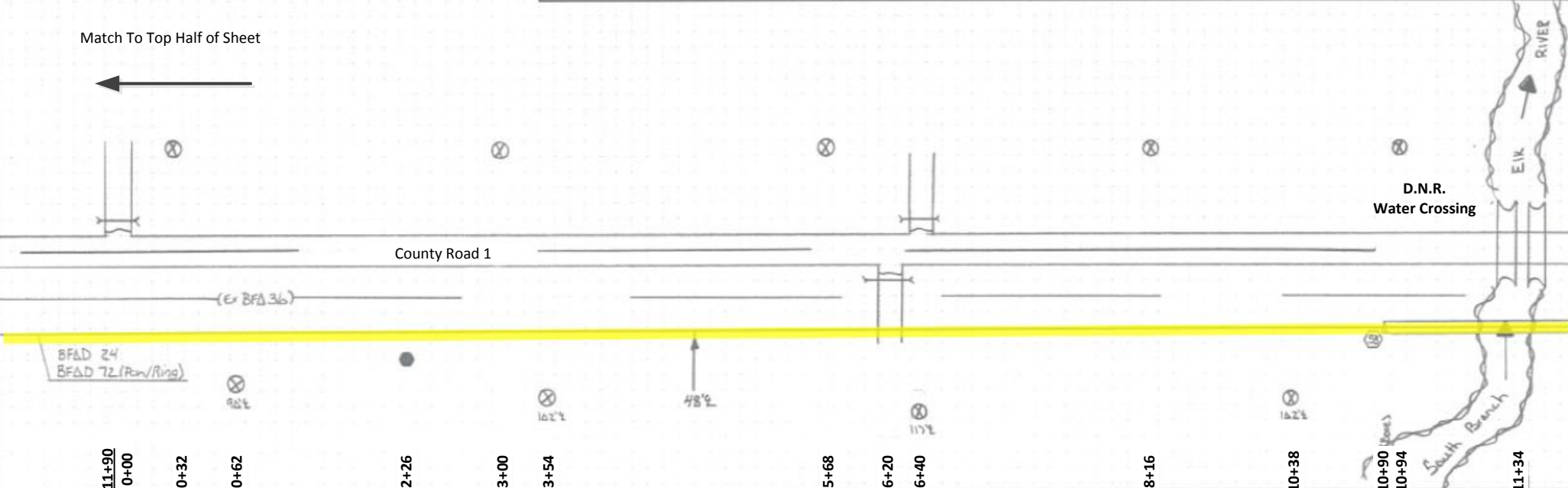
Match to Sheet 2 of 6

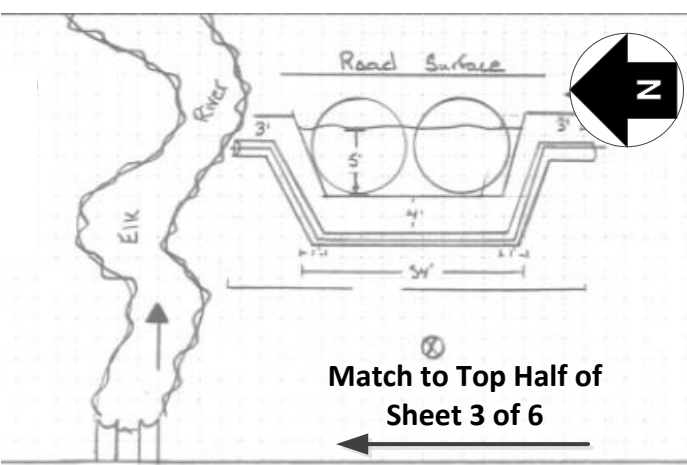
Match to Bottom Half of Sheet



SEE NOTATION		TWP 130 N	
STAKED BY: ZBL		RNG 30 W	
REV.	REV.	PROJECT: MN537-2012	SEC. 7
AS BUILT BY:	DATE:	EXCHANGE: RANDALL	CO. MORRISON
		TOWNSHIP: Parker	SERVICE AREA: RANDALL

Match To Top Half of Sheet





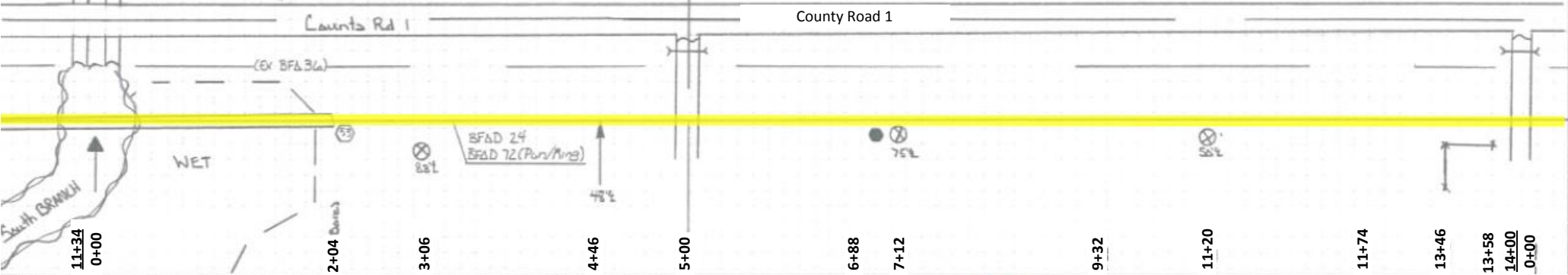
DISTANCE FROM \bar{C} ROAD		SEE NOTATION				TWP	130 N
STAKED BY: ZBL		DATE:		PROJECT: MN537-2012		RNG	30 W
REV.		REV.		EXCHANGE: RANDALL		SEC.	7 18 12 13
AS BUILT BY:		DATE:		TOWNSHIP: Parker		CO.	MORRISON
						SERVICE AREA:	RANDALL

**Randall Staking
Sheet 4 of 6**

**Proposed Route
Highlighted in Yellow
Approx. Footage Page 4-
2532'**

**Match to Bottom
Half of Page**

**Match to Top Half of
Sheet 3 of 6**



DISTANCE FROM \bar{C} ROAD		SEE NOTATION				TWP	130 N
STAKED BY: ZBL		DATE:		PROJECT: MN537-2012		RNG	30 W
REV.		REV.		EXCHANGE: RANDALL		SEC.	18 13
AS BUILT BY:		DATE:		TOWNSHIP:		CO.	MORRISON
						SERVICE AREA:	RANDALL

Match to Top Half of Page

**Match to top
of Staking
Sheet 5 of 6**



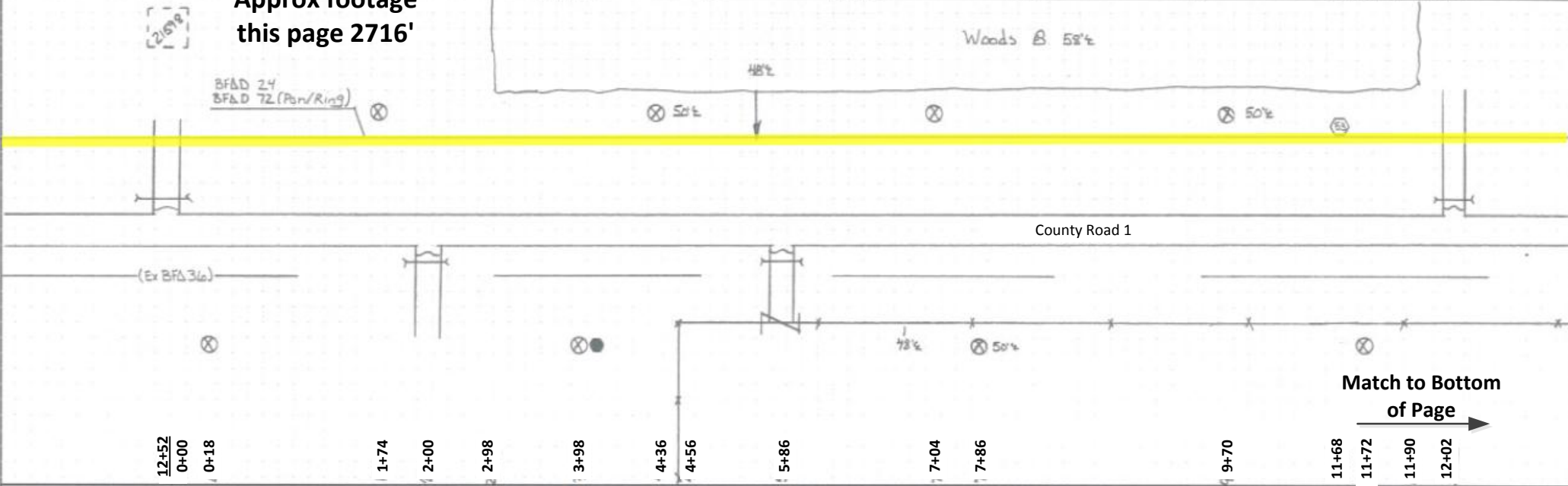
Match to Bottom of Staking Sheet 4 of 5

Proposed Route Highlighted in Yellow
Approx footage this page 2716'

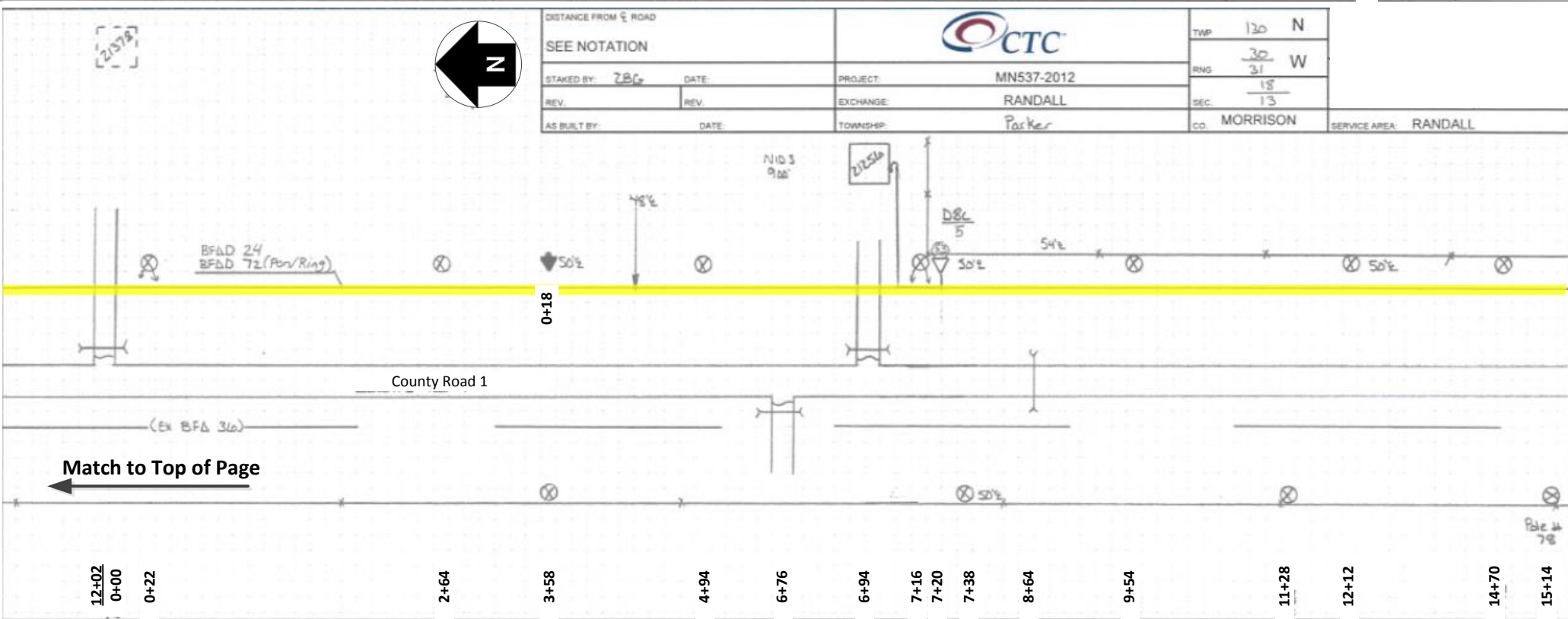


DISTANCE FROM E ROAD		SEE NOTATION				TWP	136	N
STAKED BY: ZBC		DATE:		PROJECT: MN537-2012		RNG	30	W
REV.		REV.		EXCHANGE: RANDALL		SEC.	18	
AS BUILT BY:		DATE:		TOWNSHIP: Parker		CO.	MORRISON	SERVICE AREA: RANDALL

Randall Staking Sheets 5 of 6



Match to Bottom of Page



Match to Top of Page

Proposed Route Highlighted in Yellow
Approx. Footage this page 798'
Approx Footage for all of County Road #1-11,730 Feet / 2.22 Miles

Match to Bottom of
Page 5

