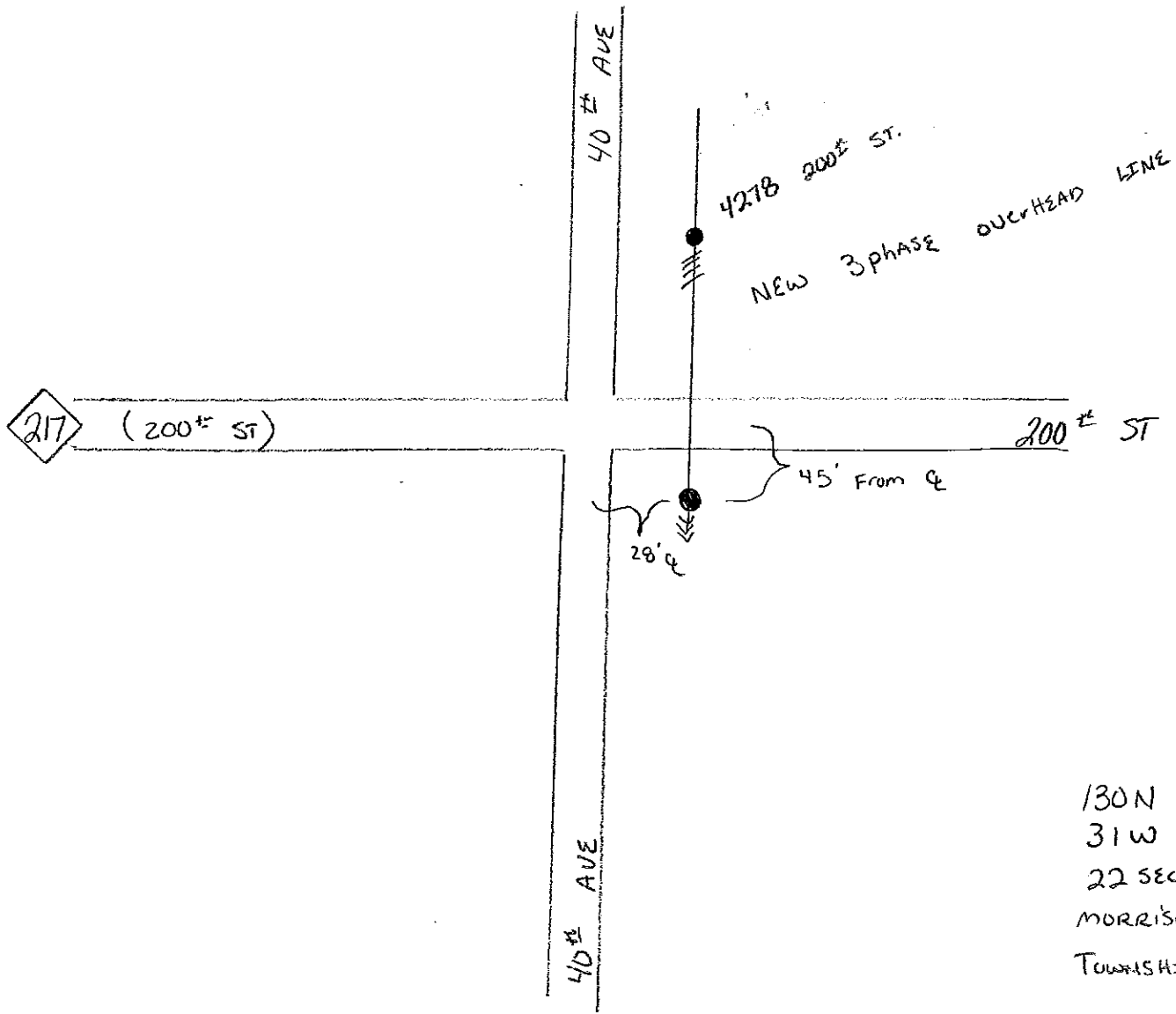


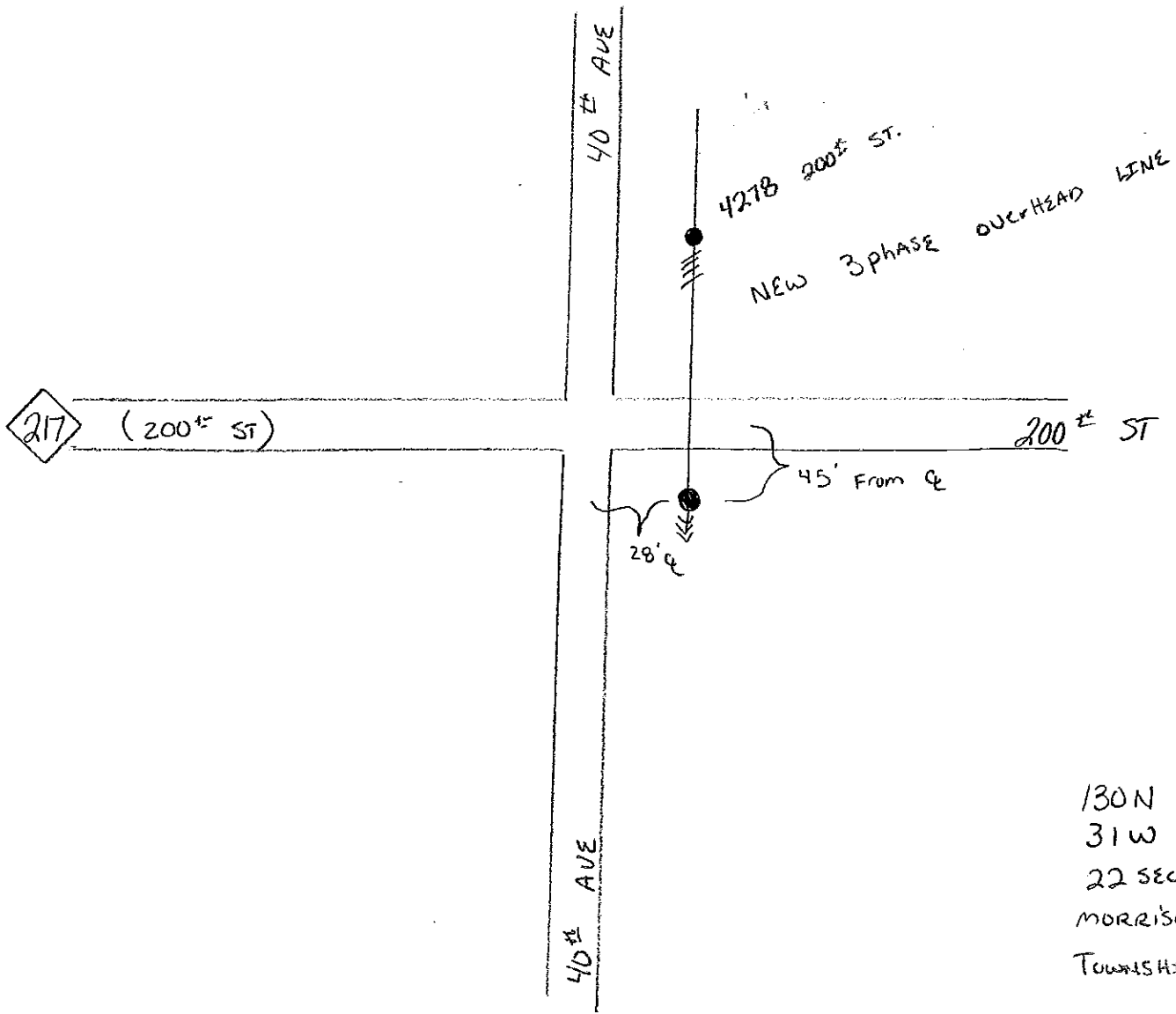
STEARNS ELECTRIC ASSOCIATION



130N  
31W  
22 SECTION  
MORRISON COUNTY  
TOWNSHIP PARKER

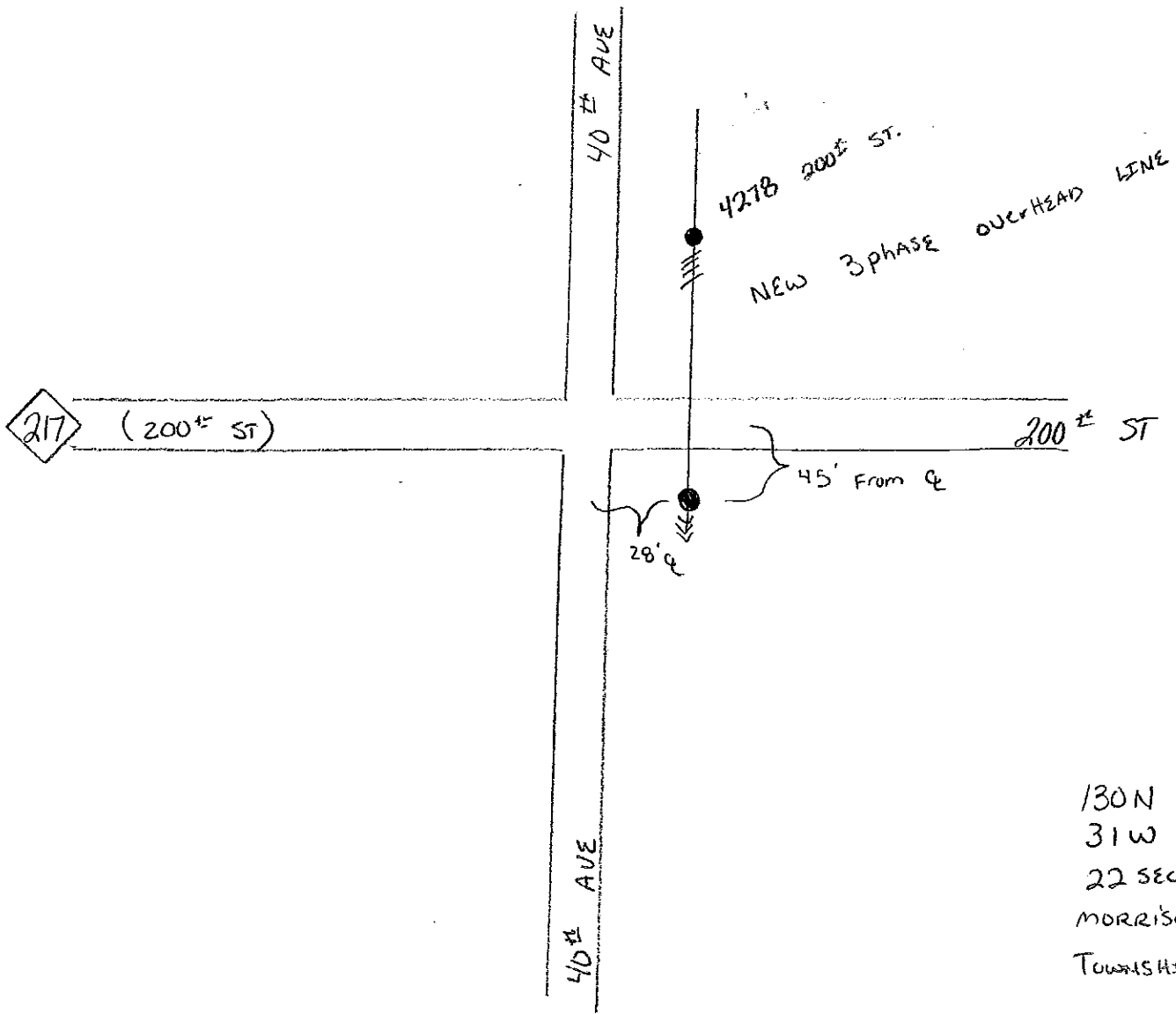


STEARNS ELECTRIC ASSOCIATION



130N  
31W  
22 SECTION  
MORRISON COUNTY  
TOWNSHIP PARKER

STEARNS ELECTRIC ASSOCIATION



130N  
31W  
22 SECTION  
MORRISON COUNTY  
TOWNSHIP PARKER