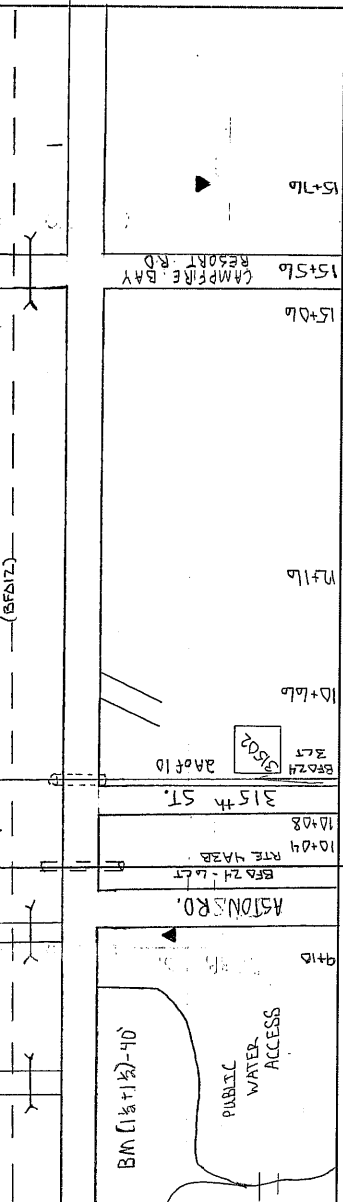


DISTANCE FROM E ROAD
 SEE NOTATION
 STAKED BY: AJB
 DATE: 10-19-11
 REV.
 AS BUILT BY:
 DATE: 3/5/12
 PROJECT: MN537-2012
 EXCHANGE: LINCOLN
 TOWNSHIP: SCANDIA VALLEY (W)
 COUNTY: MORRISON
 SERVICE AREA: LINCOLN

TWP 132 N
 RING 21 W
 SEC. 20
 ROUTE: 11A
 SHEET: 2 OF 10



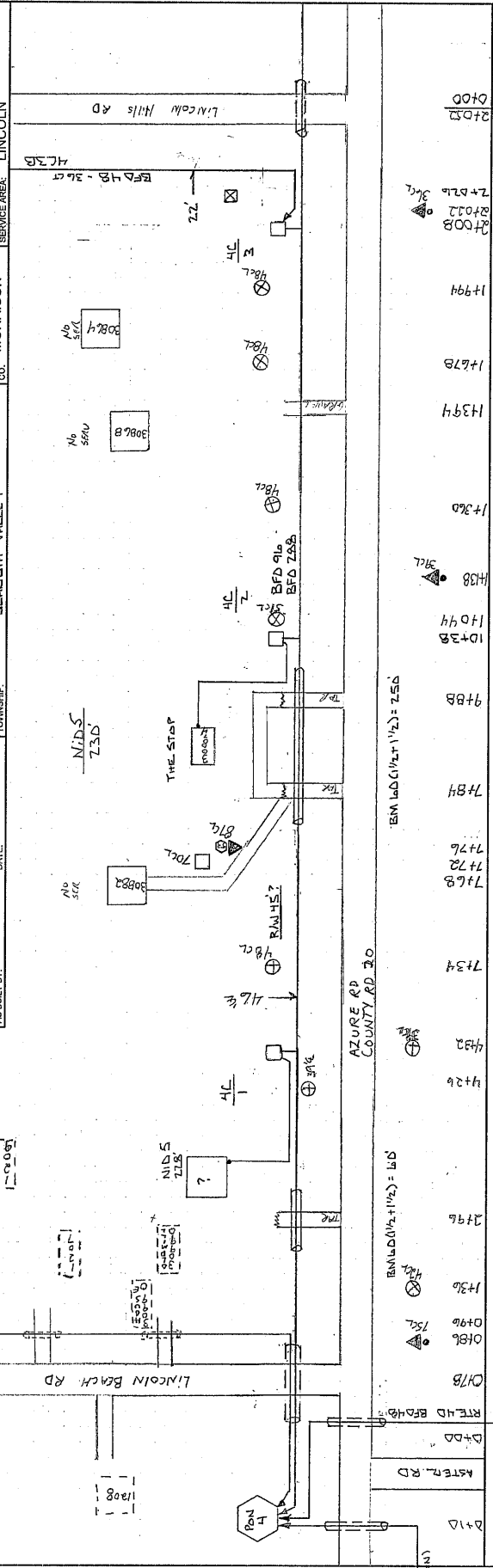
BA	BDO	BFO	BH	BM	HBF	HO	NID	SUB NO.	SEG	UD	UO
14+06			1(36960)	2 60 (980)(13315)	0 (288)	-1	3				
14+08		(48) 288) b POM	1	1 40	1	10	1	31465	350		
14+10		1022 EXPRESS									
14+12											
14+14											
14+16											
14+18											
14+20											
14+22											
14+24											
14+26											
14+28											
14+30											
14+32											
14+34											
14+36											
14+38											
14+40											
14+42											
14+44											
14+46											
14+48											
14+50											
14+52											
14+54											
14+56											
14+58											
14+60											
14+62											
14+64											
14+66											
14+68											
14+70											
14+72											
14+74											
14+76											
14+78											
14+80											
14+82											
14+84											
14+86											
14+88											
14+90											
14+92											
14+94											
14+96											
14+98											
14+100											

15+76
 15+78
 15+80
 15+82
 15+84
 15+86
 15+88
 15+90
 15+92
 15+94
 15+96
 15+98
 16+00
 16+02
 16+04
 16+06
 16+08
 16+10
 16+12
 16+14
 16+16
 16+18
 16+20
 16+22
 16+24
 16+26
 16+28
 16+30
 16+32
 16+34
 16+36
 16+38
 16+40
 16+42
 16+44
 16+46
 16+48
 16+50
 16+52
 16+54
 16+56
 16+58
 16+60
 16+62
 16+64
 16+66
 16+68
 16+70
 16+72
 16+74
 16+76
 16+78
 16+80
 16+82
 16+84
 16+86
 16+88
 16+90
 16+92
 16+94
 16+96
 16+98
 17+00

DISTANCE FROM E. ROAD
 SEE NOTATION
 STATED BY: D.M.E.
 DATE: 8/5/2011
 PROJECT: MNS37-2012
 EXCHANGE: LINCOLN
 AS BUILT BY: DATE:

TRIP: 137 N
 RING: 31 W
 SEC: 33
 CO: MORRISON
 SERVICE AREA: LINCOLN

ROUTE: 4C
 SHEET: 1 OF 13



HOUSING NO.	BA	BDO	BFO	BH	BM	HBF	HO	NID	SUB NO.	SE		UD	UO
										B	B		
1				1	1	1	1	5	5B		4	12	
2				1	1	1	2	1	30814	230			
3				1	1	1	310						
					3	3	39	1	1	228	230		

2496
 1336
 0886
 C7/B
 R7E4D BFD4B
 D4DD
 R7E7L RD
 241D
 RTE 4A
 BFD 40 (P/N)
 BFD 208
 4432
 4426
 7178
 7172
 7176
 7184
 9488
 1044
 1438
 1430
 1434
 1478
 1494
 2400B
 24032
 2426
 2400

RMADD(1/2, 1/2) = 750
 RMADD(1/2, 1/2) = 750
 RMADD(1/2, 1/2) = 750
 RMADD(1/2, 1/2) = 750

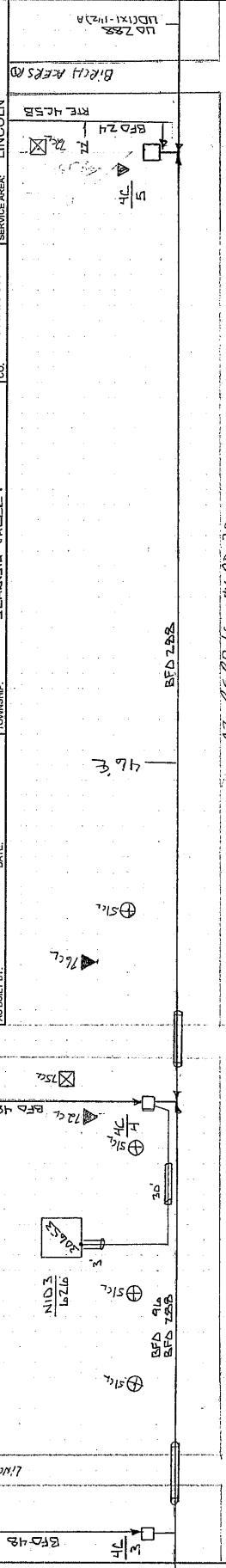
LINCOLN BEACH RD
 AZURE RD COUNTY RD 30
 LINCOLN HILLS RD

NIDS 730
 THE STAP
 BFD 910
 BFD 750
 BFD 40 (P/N)
 BFD 208

DISTANCE FROM Q ROAD
 SEE NOTATION
 STAKED BY: DJL E
 DATE: 8/19/2011
 PROJECT: MN537-2012
 EXCHANGE: LINCOLN
 TOWNSHIP: SCLANDIA VALLEY-1
 T.M. BLD LN
 REV. DATE
 AS BUILT BY: DATE

TYP 132 N
 RING 31 W
 SEC. 31
 CO. MORRISON
 SERVICE AREA: LINCOLN

ROUTE: 4C
 SHEET: 7 OF 13



AZURE RD / COUNTY RD 20
 R R Access
 BFD 4B
 BFD 4C
 BFD 4D
 BFD 288
 BFD 289
 BFD 290
 BFD 291
 BFD 292
 BFD 293
 BFD 294
 BFD 295
 BFD 296
 BFD 297
 BFD 298
 BFD 299
 BFD 300
 BFD 301
 BFD 302
 BFD 303
 BFD 304
 BFD 305
 BFD 306
 BFD 307
 BFD 308
 BFD 309
 BFD 310
 BFD 311
 BFD 312
 BFD 313
 BFD 314
 BFD 315
 BFD 316
 BFD 317
 BFD 318
 BFD 319
 BFD 320
 BFD 321
 BFD 322
 BFD 323
 BFD 324
 BFD 325
 BFD 326
 BFD 327
 BFD 328
 BFD 329
 BFD 330
 BFD 331
 BFD 332
 BFD 333
 BFD 334
 BFD 335
 BFD 336
 BFD 337
 BFD 338
 BFD 339
 BFD 340
 BFD 341
 BFD 342
 BFD 343
 BFD 344
 BFD 345
 BFD 346
 BFD 347
 BFD 348
 BFD 349
 BFD 350
 BFD 351
 BFD 352
 BFD 353
 BFD 354
 BFD 355
 BFD 356
 BFD 357
 BFD 358
 BFD 359
 BFD 360
 BFD 361
 BFD 362
 BFD 363
 BFD 364
 BFD 365
 BFD 366
 BFD 367
 BFD 368
 BFD 369
 BFD 370
 BFD 371
 BFD 372
 BFD 373
 BFD 374
 BFD 375
 BFD 376
 BFD 377
 BFD 378
 BFD 379
 BFD 380
 BFD 381
 BFD 382
 BFD 383
 BFD 384
 BFD 385
 BFD 386
 BFD 387
 BFD 388
 BFD 389
 BFD 390
 BFD 391
 BFD 392
 BFD 393
 BFD 394
 BFD 395
 BFD 396
 BFD 397
 BFD 398
 BFD 399
 BFD 400
 BFD 401
 BFD 402
 BFD 403
 BFD 404
 BFD 405
 BFD 406
 BFD 407
 BFD 408
 BFD 409
 BFD 410
 BFD 411
 BFD 412
 BFD 413
 BFD 414
 BFD 415
 BFD 416
 BFD 417
 BFD 418
 BFD 419
 BFD 420
 BFD 421
 BFD 422
 BFD 423
 BFD 424
 BFD 425
 BFD 426
 BFD 427
 BFD 428
 BFD 429
 BFD 430
 BFD 431
 BFD 432
 BFD 433
 BFD 434
 BFD 435
 BFD 436
 BFD 437
 BFD 438
 BFD 439
 BFD 440
 BFD 441
 BFD 442
 BFD 443
 BFD 444
 BFD 445
 BFD 446
 BFD 447
 BFD 448
 BFD 449
 BFD 450
 BFD 451
 BFD 452
 BFD 453
 BFD 454
 BFD 455
 BFD 456
 BFD 457
 BFD 458
 BFD 459
 BFD 460
 BFD 461
 BFD 462
 BFD 463
 BFD 464
 BFD 465
 BFD 466
 BFD 467
 BFD 468
 BFD 469
 BFD 470
 BFD 471
 BFD 472
 BFD 473
 BFD 474
 BFD 475
 BFD 476
 BFD 477
 BFD 478
 BFD 479
 BFD 480
 BFD 481
 BFD 482
 BFD 483
 BFD 484
 BFD 485
 BFD 486
 BFD 487
 BFD 488
 BFD 489
 BFD 490
 BFD 491
 BFD 492
 BFD 493
 BFD 494
 BFD 495
 BFD 496
 BFD 497
 BFD 498
 BFD 499
 BFD 500
 BFD 501
 BFD 502
 BFD 503
 BFD 504
 BFD 505
 BFD 506
 BFD 507
 BFD 508
 BFD 509
 BFD 510
 BFD 511
 BFD 512
 BFD 513
 BFD 514
 BFD 515
 BFD 516
 BFD 517
 BFD 518
 BFD 519
 BFD 520
 BFD 521
 BFD 522
 BFD 523
 BFD 524
 BFD 525
 BFD 526
 BFD 527
 BFD 528
 BFD 529
 BFD 530
 BFD 531
 BFD 532
 BFD 533
 BFD 534
 BFD 535
 BFD 536
 BFD 537
 BFD 538
 BFD 539
 BFD 540
 BFD 541
 BFD 542
 BFD 543
 BFD 544
 BFD 545
 BFD 546
 BFD 547
 BFD 548
 BFD 549
 BFD 550
 BFD 551
 BFD 552
 BFD 553
 BFD 554
 BFD 555
 BFD 556
 BFD 557
 BFD 558
 BFD 559
 BFD 560
 BFD 561
 BFD 562
 BFD 563
 BFD 564
 BFD 565
 BFD 566
 BFD 567
 BFD 568
 BFD 569
 BFD 570
 BFD 571
 BFD 572
 BFD 573
 BFD 574
 BFD 575
 BFD 576
 BFD 577
 BFD 578
 BFD 579
 BFD 580
 BFD 581
 BFD 582
 BFD 583
 BFD 584
 BFD 585
 BFD 586
 BFD 587
 BFD 588
 BFD 589
 BFD 590
 BFD 591
 BFD 592
 BFD 593
 BFD 594
 BFD 595
 BFD 596
 BFD 597
 BFD 598
 BFD 599
 BFD 600
 BFD 601
 BFD 602
 BFD 603
 BFD 604
 BFD 605
 BFD 606
 BFD 607
 BFD 608
 BFD 609
 BFD 610
 BFD 611
 BFD 612
 BFD 613
 BFD 614
 BFD 615
 BFD 616
 BFD 617
 BFD 618
 BFD 619
 BFD 620
 BFD 621
 BFD 622
 BFD 623
 BFD 624
 BFD 625
 BFD 626
 BFD 627
 BFD 628
 BFD 629
 BFD 630
 BFD 631
 BFD 632
 BFD 633
 BFD 634
 BFD 635
 BFD 636
 BFD 637
 BFD 638
 BFD 639
 BFD 640
 BFD 641
 BFD 642
 BFD 643
 BFD 644
 BFD 645
 BFD 646
 BFD 647
 BFD 648
 BFD 649
 BFD 650
 BFD 651
 BFD 652
 BFD 653
 BFD 654
 BFD 655
 BFD 656
 BFD 657
 BFD 658
 BFD 659
 BFD 660
 BFD 661
 BFD 662
 BFD 663
 BFD 664
 BFD 665
 BFD 666
 BFD 667
 BFD 668
 BFD 669
 BFD 670
 BFD 671
 BFD 672
 BFD 673
 BFD 674
 BFD 675
 BFD 676
 BFD 677
 BFD 678
 BFD 679
 BFD 680
 BFD 681
 BFD 682
 BFD 683
 BFD 684
 BFD 685
 BFD 686
 BFD 687
 BFD 688
 BFD 689
 BFD 690
 BFD 691
 BFD 692
 BFD 693
 BFD 694
 BFD 695
 BFD 696
 BFD 697
 BFD 698
 BFD 699
 BFD 700
 BFD 701
 BFD 702
 BFD 703
 BFD 704
 BFD 705
 BFD 706
 BFD 707
 BFD 708
 BFD 709
 BFD 710
 BFD 711
 BFD 712
 BFD 713
 BFD 714
 BFD 715
 BFD 716
 BFD 717
 BFD 718
 BFD 719
 BFD 720
 BFD 721
 BFD 722
 BFD 723
 BFD 724
 BFD 725
 BFD 726
 BFD 727
 BFD 728
 BFD 729
 BFD 730
 BFD 731
 BFD 732
 BFD 733
 BFD 734
 BFD 735
 BFD 736
 BFD 737
 BFD 738
 BFD 739
 BFD 740
 BFD 741
 BFD 742
 BFD 743
 BFD 744
 BFD 745
 BFD 746
 BFD 747
 BFD 748
 BFD 749
 BFD 750
 BFD 751
 BFD 752
 BFD 753
 BFD 754
 BFD 755
 BFD 756
 BFD 757
 BFD 758
 BFD 759
 BFD 760
 BFD 761
 BFD 762
 BFD 763
 BFD 764
 BFD 765
 BFD 766
 BFD 767
 BFD 768
 BFD 769
 BFD 770
 BFD 771
 BFD 772
 BFD 773
 BFD 774
 BFD 775
 BFD 776
 BFD 777
 BFD 778
 BFD 779
 BFD 780
 BFD 781
 BFD 782
 BFD 783
 BFD 784
 BFD 785
 BFD 786
 BFD 787
 BFD 788
 BFD 789
 BFD 790
 BFD 791
 BFD 792
 BFD 793
 BFD 794
 BFD 795
 BFD 796
 BFD 797
 BFD 798
 BFD 799
 BFD 800
 BFD 801
 BFD 802
 BFD 803
 BFD 804
 BFD 805
 BFD 806
 BFD 807
 BFD 808
 BFD 809
 BFD 810
 BFD 811
 BFD 812
 BFD 813
 BFD 814
 BFD 815
 BFD 816
 BFD 817
 BFD 818
 BFD 819
 BFD 820
 BFD 821
 BFD 822
 BFD 823
 BFD 824
 BFD 825
 BFD 826
 BFD 827
 BFD 828
 BFD 829
 BFD 830
 BFD 831
 BFD 832
 BFD 833
 BFD 834
 BFD 835
 BFD 836
 BFD 837
 BFD 838
 BFD 839
 BFD 840
 BFD 841
 BFD 842
 BFD 843
 BFD 844
 BFD 845
 BFD 846
 BFD 847
 BFD 848
 BFD 849
 BFD 850
 BFD 851
 BFD 852
 BFD 853
 BFD 854
 BFD 855
 BFD 856
 BFD 857
 BFD 858
 BFD 859
 BFD 860
 BFD 861
 BFD 862
 BFD 863
 BFD 864
 BFD 865
 BFD 866
 BFD 867
 BFD 868
 BFD 869
 BFD 870
 BFD 871
 BFD 872
 BFD 873
 BFD 874
 BFD 875
 BFD 876
 BFD 877
 BFD 878
 BFD 879
 BFD 880
 BFD 881
 BFD 882
 BFD 883
 BFD 884
 BFD 885
 BFD 886
 BFD 887
 BFD 888
 BFD 889
 BFD 890
 BFD 891
 BFD 892
 BFD 893
 BFD 894
 BFD 895
 BFD 896
 BFD 897
 BFD 898
 BFD 899
 BFD 900
 BFD 901
 BFD 902
 BFD 903
 BFD 904
 BFD 905
 BFD 906
 BFD 907
 BFD 908
 BFD 909
 BFD 910
 BFD 911
 BFD 912
 BFD 913
 BFD 914
 BFD 915

