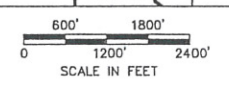
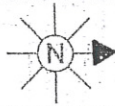


DATE	REVISION AND PURPOSE	DRAWN BY
4-1-12	PROPOSED 2012 CONSTRUCTION	FEC
9-1-12	AS BUILT	FEC

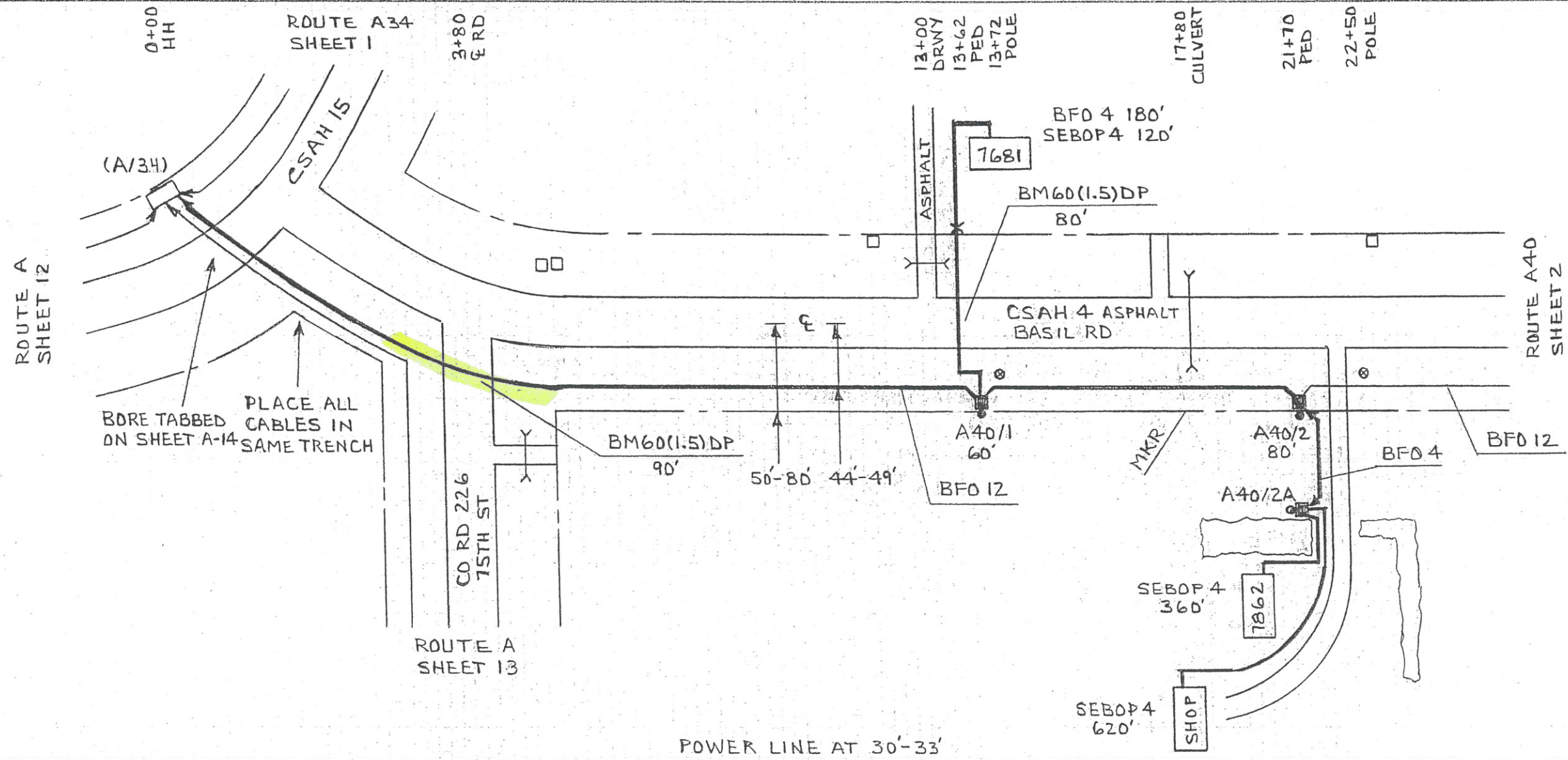
**PROPOSED LEGEND**

- TYPE OF CABLE (FIBER) AND SIZE
- FIBER DROP (4 PAIR)
- DUCT
- FIBER PED
- FACILITY CHANGE
- FIBER HANDHOLE
- FIBER MANHOLE





COUNTY MORRISON	SEC. 28	STAKED BY FEC-JM	EXCHANGE UPSALA	LEAD A40
	TWP. 128N	DATE 2-12	STAKING SHEET AND PLANT RECORD	SHEET 1 OF 2
	RGE. 31W	REL. REV.	PROJECT	MAP REF.



POWER LINE AT 30'-33'

PED OR STA#	PED		POLE		MISC.			SPLICE			CABLE			MISC. NOTES
	BD	BA	BDO	BDO	BM2	BM	BM60	BM	H0-1	BFO	BFO	SEBOP	NID	
(A/34)	23	8A	6A	(5/8)(8)	S3	(1.5)DP	83			12	4	4	(FO)	
A40/1		1	1		1	90		1		1458	180	120	1	7681
A40/2		1	1		1			2		880				
A40/2A		1	1		1		1	2			590	360	1	7862
					1		1					620	1	SHOP
TOTAL		3	3		6	170	3	5		2338	770	1100	3	



SEC. 28 STAKED BY FEC-JM  
 TWP. 128N DATE 3-12  
 RGE. 31W REL. REV. PROJECT

EXCHANGE UPSALA  
 STAKING SHEET AND PLANT RECORD

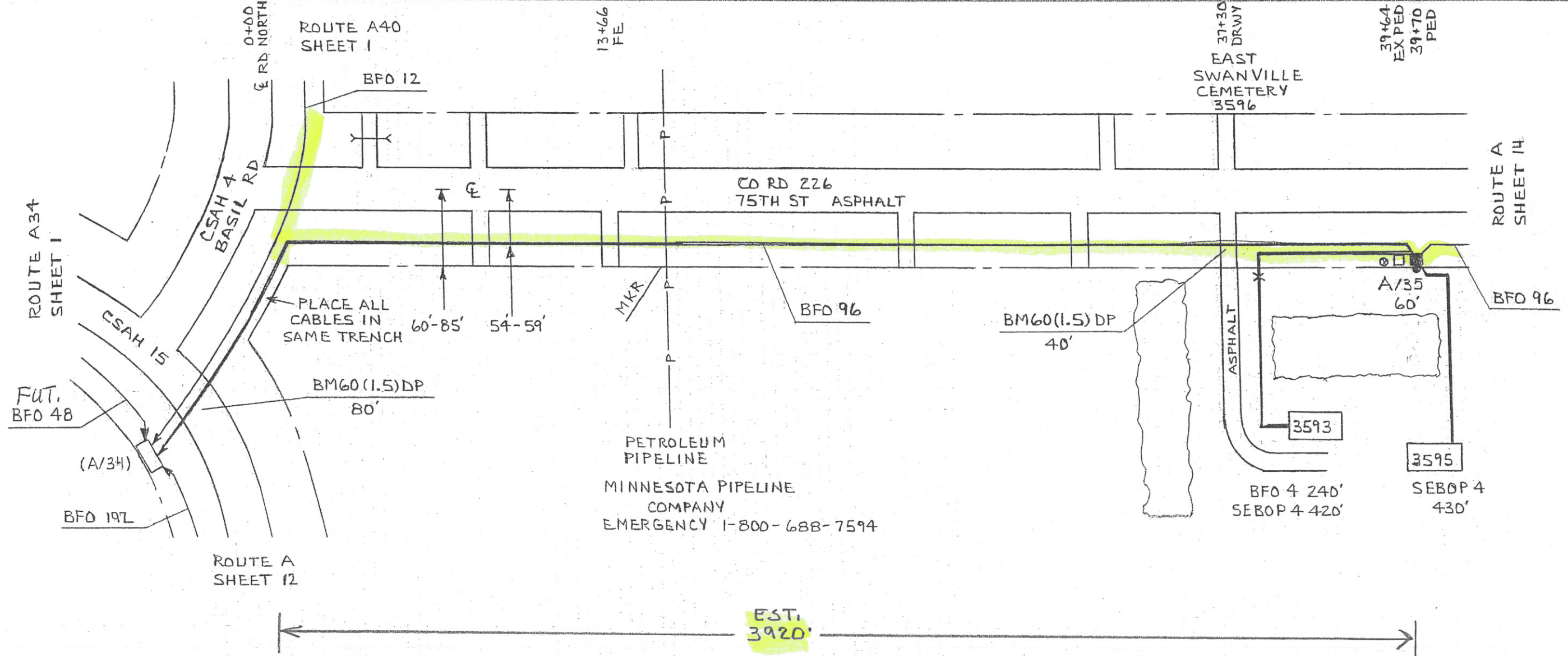
LEAD A  
 SHEET 13 OF 25  
 MAP REF.

COUNTY MORRISON

13+66  
FE

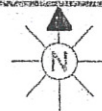
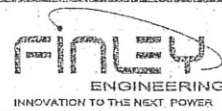
37+30  
DRWY  
EAST SWANVILLE CEMETERY 3596

39+64  
EXPED  
39+70  
PED

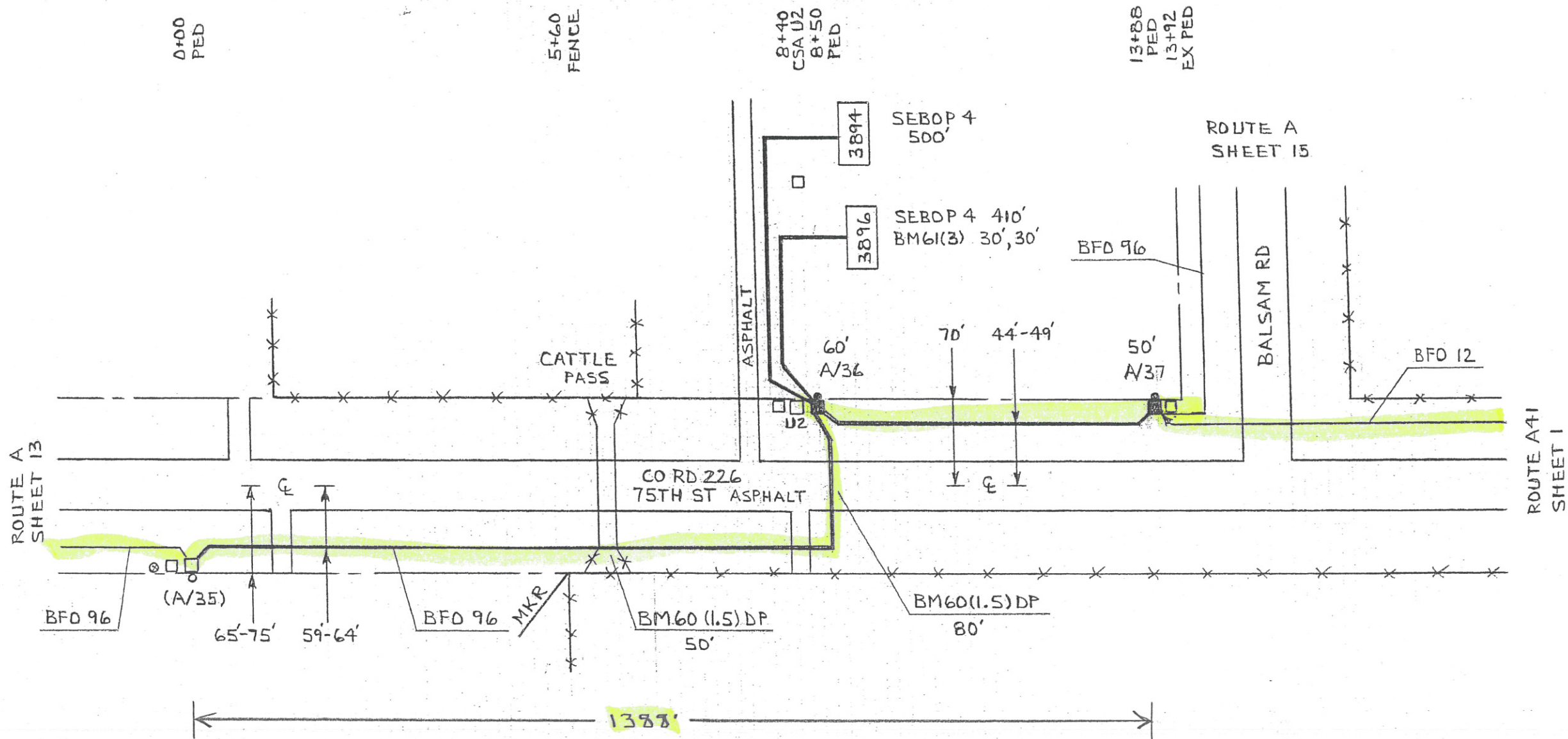


EST. 3920'

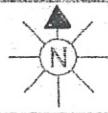
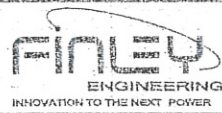
PED OR STA#	PED			POLE			MISC.			SPLICE			CABLE			MISC. NOTES
	BD	BA	BDO	BA	BDO	BA	BM2 (5/8)(8)	BM 53	BM60 (1.5)DP	BM 83	BM 99	HD-1	BFO 96	BFO 4	SEBO P 4	
(A/34)																
A/35		1	1				1	1	80		1	2	4382			
							1			1				240	420	1 3593
							1			1					430	1 3595
TOTAL		1	1				3	1	120	2	1	2	4382	240	850	2



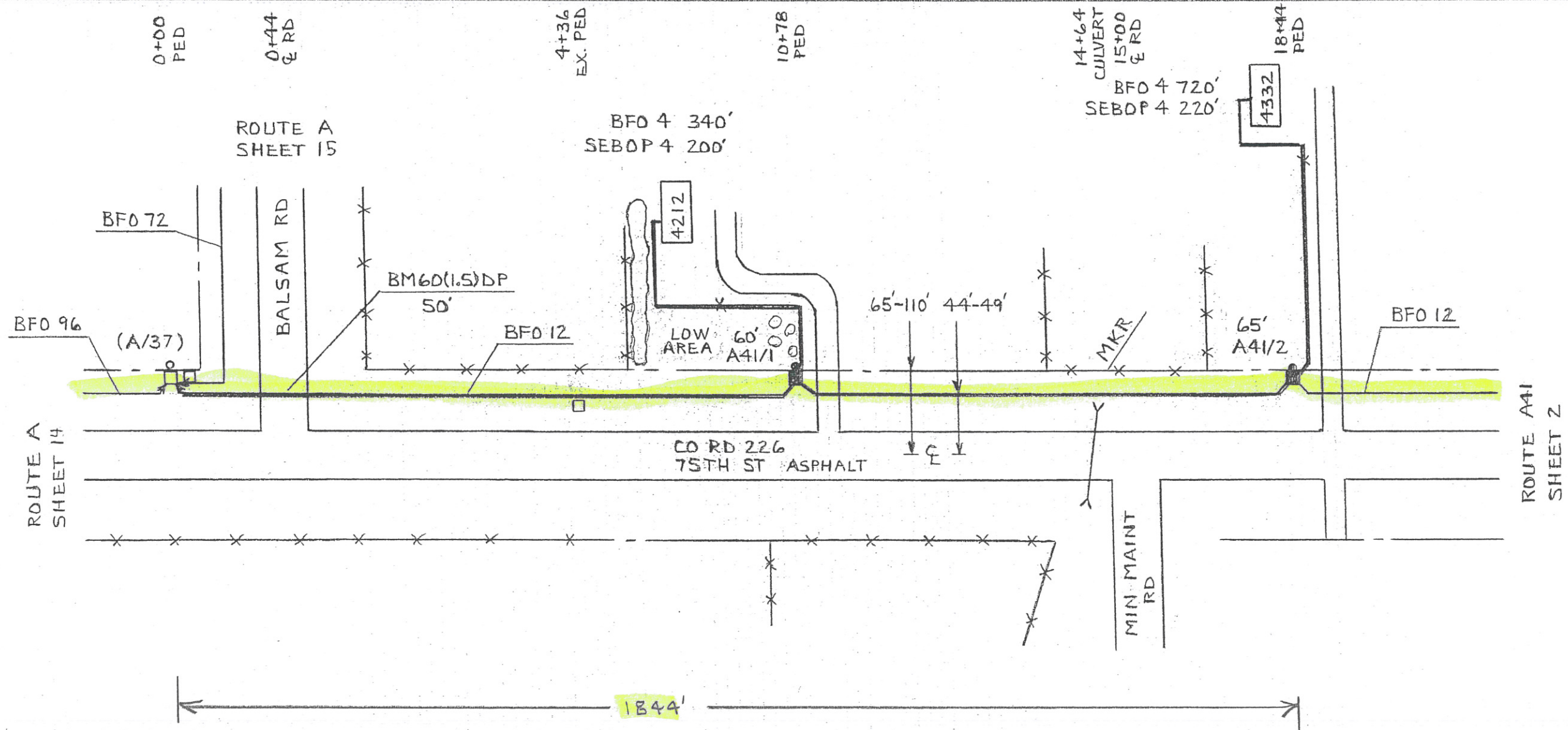
COUNTY MORRISON	SEC. 28	STAKED BY FEC-JM	EXCHANGE UPSALA	LEAD A
	TWP. 128N	DATE 3-12	STAKING SHEET AND PLANT RECORD	SHEET 14 OF 25
	RGE. 31W	REL. REV.	PROJECT	MAP REF.



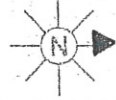
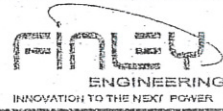
PED OR STA#	PED			MISC.					SPLICE			CABLE				MISC. NOTES
	BD	BA 23	BDD BA	BM2 (5/8)X8	BM 53	BM60 (1.5)DP	BM61 (3)	BM 83	HO-1	BFD 96	SEBOP 4	NID (FO)				
(A/35)																
A/36		1	1			50			2	1022						
							30	1			500		1	3894		
							30	1			410		1	3896		
A/37		1	1						8	582						
TOTAL		2	2		4	1	130	60	2	10	1604		910	2		



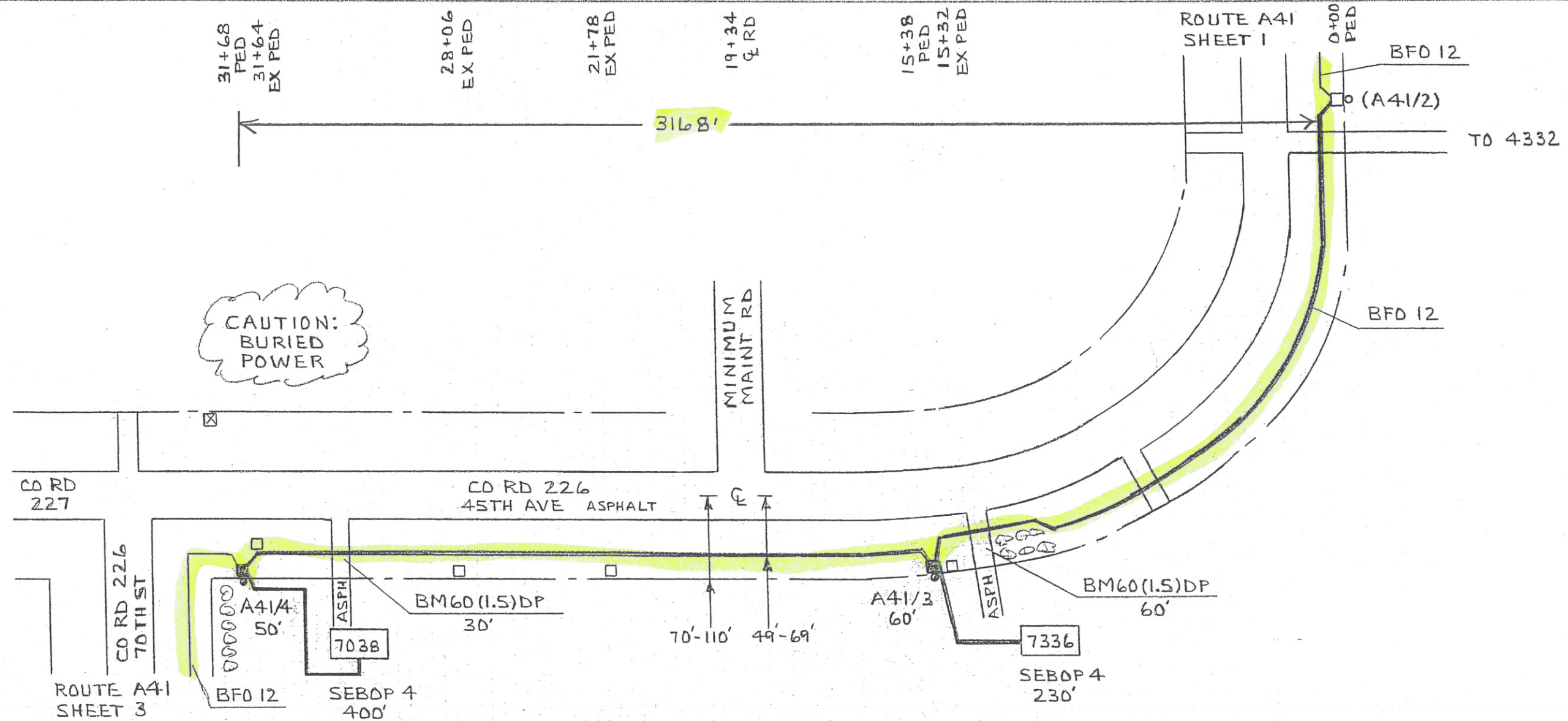
COUNTY	MORRISON	SEC.	27	STAKED BY	FEC-JM	EXCHANGE	UPSALA	LEAD	A41
		TWP.	12BN	DATE	3-12	STAKING SHEET AND PLANT RECORD			SHEET 1 OF 3
		RGE.	31W	REL.	REV.	PROJECT		MAP REF.	



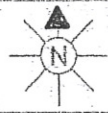
PED OR STA#	PED		MISC.				SPLICE		CABLE			MISC. NOTES				
	BD	POLE	BM2 (9/8)(8)	BM 53	BM60 (1.5)DP	BM 83	H0-1	BFO 12	BFO 4	SEBOP 4	NID (FO)					
(A/37)																
A41/1					50			1122	340	200	1	4212				
A41/2								824	720	220	1	4332				
TOTAL		2	2		3	1	50		2	2		1946	1060	420		2



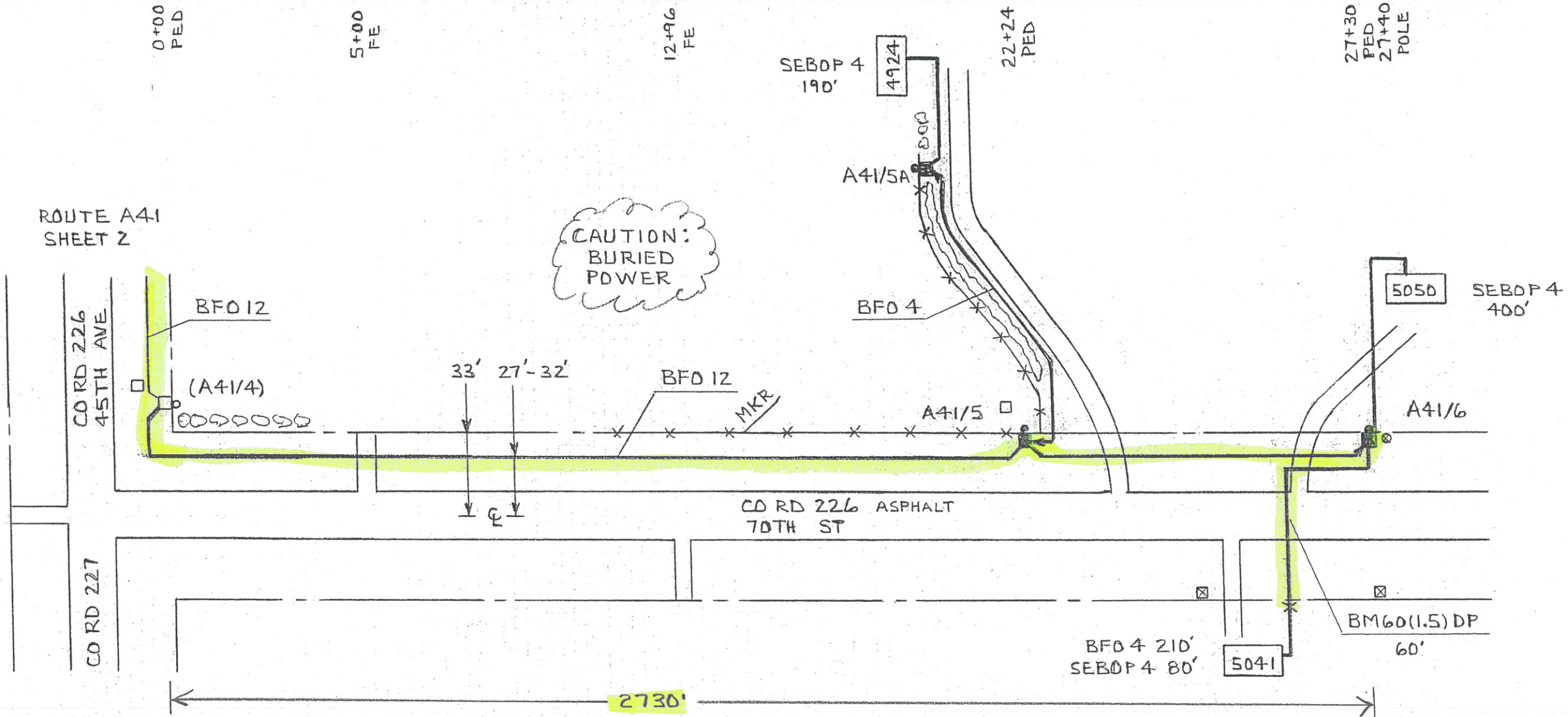
COUNTY MORRISON		SEC. 27	STAKED BY FEC-JM	EXCHANGE UPSALA	LEAD A41
		TWP. 128N	DATE 3-12	STAKING SHEET AND PLANT RECORD	SHEET 2 OF 3
		RGE. 31W	REL. REV.	PROJECT	MAP REF.



PED OR STA#	PED		POLE		MISC.			SPLICE		CABLE			MISC. NOTES
	BD	BA	BDO		BM2	BM60	BM	H0-1	BFD	SEBOP		NID	
		23	6A		(5/8)8	(1.5)DP	83		12	4		(FO)	
(A41/2)													
A41/3		1	1		1	60	1	1	1620		230	1	7336
A41/4		1	1		1	30	1	1	1654		400	1	7038
TOTAL		2	2		4	90	2	2	3274		630	2	



SEC. 27	STAKED BY FEC-JM	EXCHANGE UPSALA	LEAD A41
TWP. 128N	DATE 3-12	STAKING SHEET AND PLANT RECORD	SHEET 3 OF 3
COUNTY MORRISON	RGE. 31W	REL.	MAP REF.



PED OR STA#	PED		MISC.				SPLICE		CABLE				MISC. NOTES
	BD	POLE	BA	BDA	BM2 (7)(8)	BM 53	BM60 (1.5) DP	BM 83	HO-1	BFD 12	BFD 4	SEBOP 4	
(A41/4)													
A41/5			1	1					1	2304			
A41/5A			1	1					1	1440			
A41/6			1	1					2	540			
											190		1 4924
											80		1 5041
											400		1 5050
TOTAL			3	3					4	2844	1650	670	3