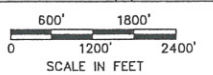
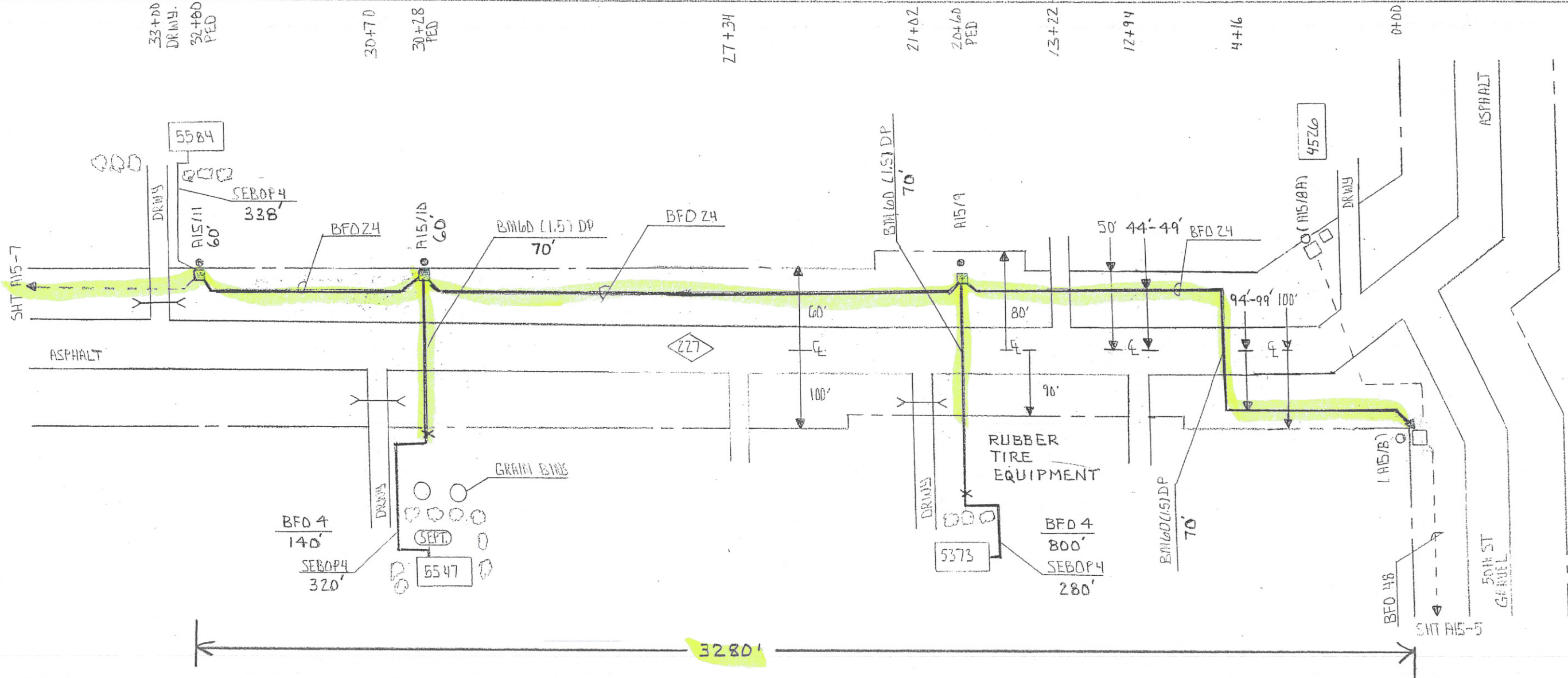
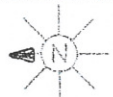


DATE	REVISION AND PURPOSE	DRAWN BY
4-1-12	PROPOSED 2012 CONSTRUCTION	FEC
3-1-12	AS BUILT	FEC

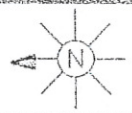
- PROPOSED LEGEND**
- TYPE OF CABLE (FIBER) AND SIZE
  - FIBER
  - FIBER DROP (4 PAIR)
  - DUCT
  - FIBER PED
  - FACILITY CHANGE
  - FIBER HANDHOLE
  - FIBER MANHOLE







PED OR STA#	PED		POLE	MISC.			SPLICE		CABLE			MISC. NOTES					
	BD	BA		BDD				BFD	BFO		SEBOP		BWM	TID			
		23	6A														
(R15/8)																	
R15/9						70											
R15/9 to 5373						70			2110	800		280	1	1			
R15/10																	
R15/10 to 5547						70			1008	140		320	1	1			
R15/11																	
R15/11 to 5584									292			338	1	1			
TOTAL		3	3			5		210	3			3410	940		938	3	3



COUNTY MORRISON

SEC. 3

STAKED BY TP

EXCHANGE UPSALA

LEAD A15

TWP. 127N

DATE 1/12

STAKING SHEET AND PLANT RECORD

SHEET 7 OF 9

RGE. 31W

REL.

REV.

PROJECT

MAP REF.

58+60

56+06  
DRAIN  
55+66  
PED

51+68  
CULVERT

51+40

47+76

42+30

33+00  
DRAIN  
32+80  
PED

5972  
BFO 4  
850'  
SERDP 4  
140'

RUBBER  
TIRE  
EQUIPMENT

BFO 24

44'-49'

5584

SHT A15-B

DRAIN

A15/12  
45'



45th AVE

↓ 9

DRAIN

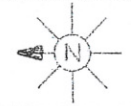
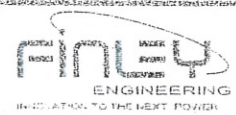
A15/11

ASPHALT

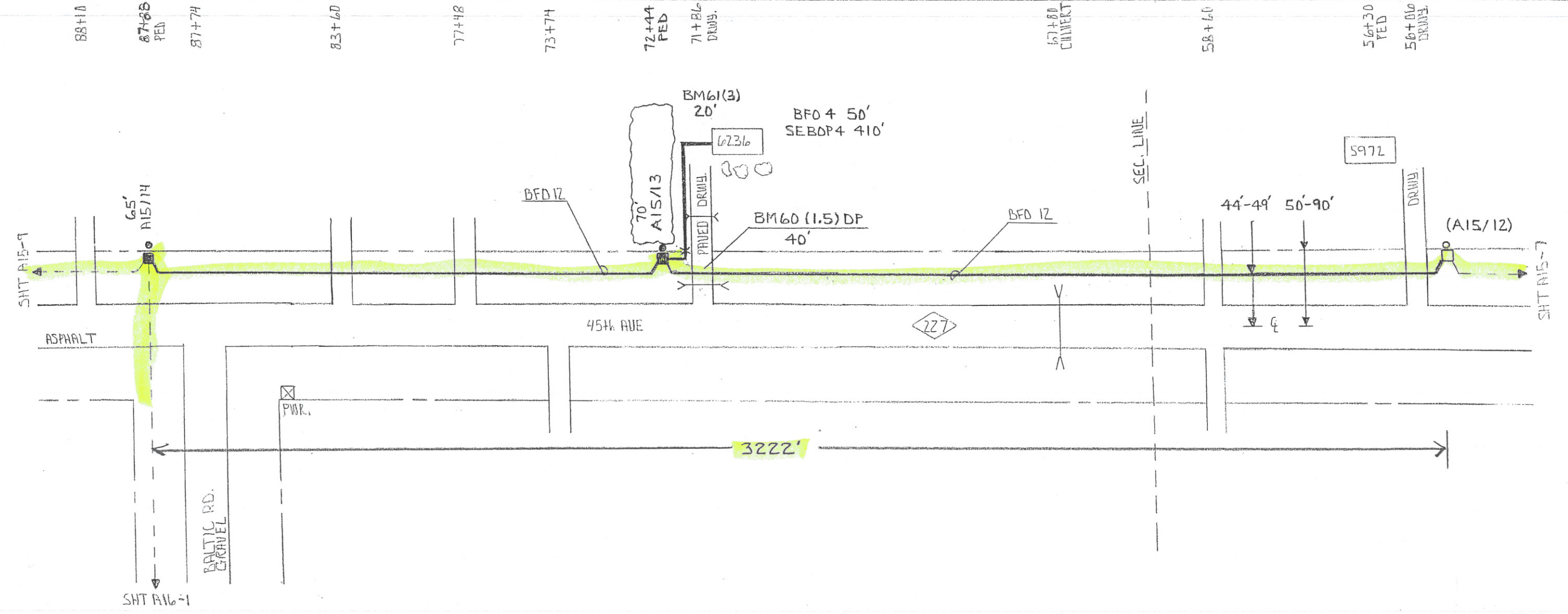
SHT A15-6



PED OR STA#	PED		POLE				MISC.				SPLICE			CABLE				MISC. NOTES
	BD	BA	BDO	BWZ	BWZ					HD	BFO	BFO			SERDP	BM	NID	
(A15/11)		Z3	6A	(5/8/2)	(5/8/2)					1	24	4			4	83	(FD)	
A15/12		1	1	1	1					13	2326	850			140	1	1	
A15/12 to 5972				1														
TOTAL		1	1	2						13	2326	850			140	1	1	



COUNTY MDRRISON		SEC. 34/3	STAKED BY TP	EXCHANGE UPSALA		LEAD A15
		TWP. 127N	DATE 1/12	STAKING SHEET AND PLANT RECORD		SHEET 8 OF 9
		RGE. 31W	REL.	REV.	PROJECT	MAP REF.



PED OR STA#	PED		POLE		MISC.					SPLICE			CABLE			MISC. NOTES
	BD	BA	BDD	BJD	BMZ	BM60	BM61			HD	BFO	BFO		SEBOP	BM	
(A15/12)		75	6A	8A	(5/8X8)	(1.5)DP	(3)			1	12	4		4	83	(FD)
A15/13		1	1		1					1	1560					
A15/13 to 6236					1		20					50		410	1	1
A15/14		1	1		1		40			3	1678					
TOTAL		2	2		3	40	20			4	3238	50		410	1	1



COUNTY MARRISON

SEC. 34

STAKED BY TP

EXCHANGE UPS/LR

LEAD A16

TWP. 127N

DATE 1/12

STAKING SHEET AND PLANT RECORD

SHEET 1 OF 2

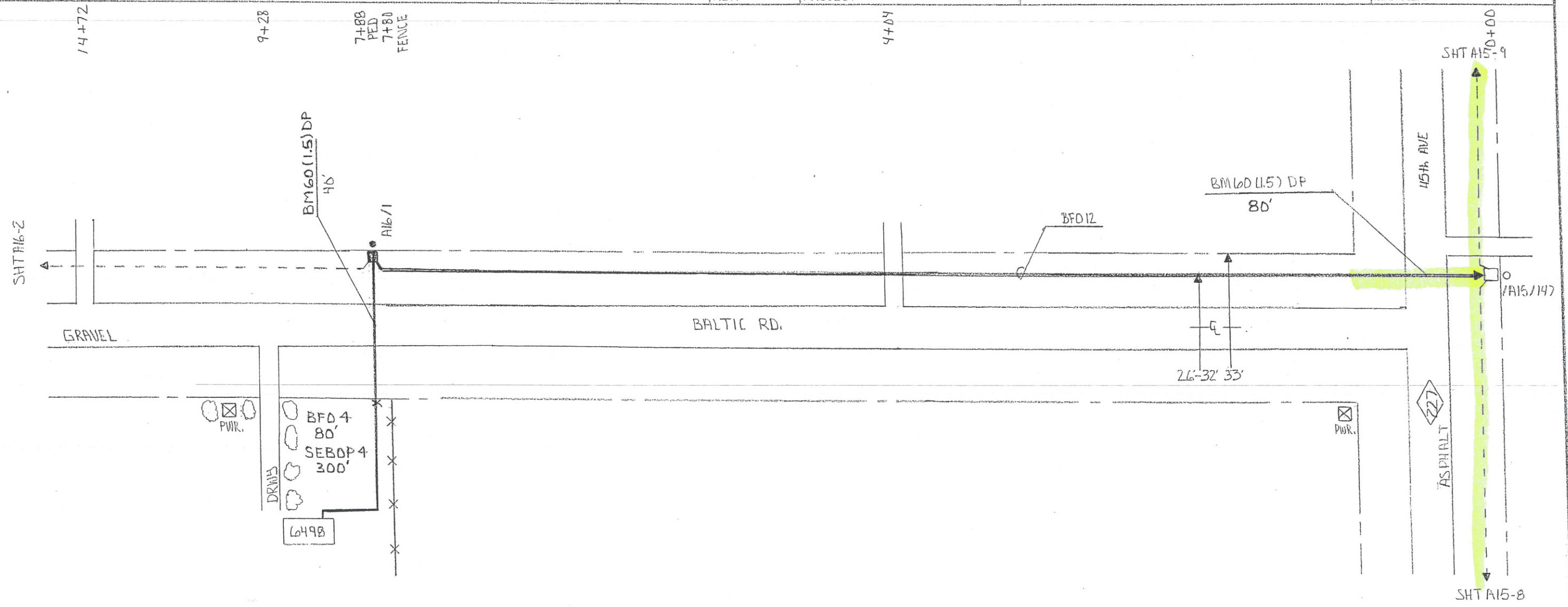
RGE. 21W

REL.

REV.

PROJECT

MAP REF.



PED OR STA#	PED		MISC.					SPLICE		CABLE					MISC. NOTES
	BD	BA 23	BDO 6A	BMD (5/8) 18	BMD (1.5) DP		NO 1		BFD 12	BFD 4		SEBOP 4	EM 83	NO (FO)	
(A15/14)															
A16/1		1	1	1	60		1		820						
A16/1 to 649B					40					80		300	1	1	
TOTAL		1	1	1	100		1		820	80		300	1	1	

