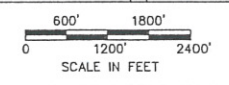
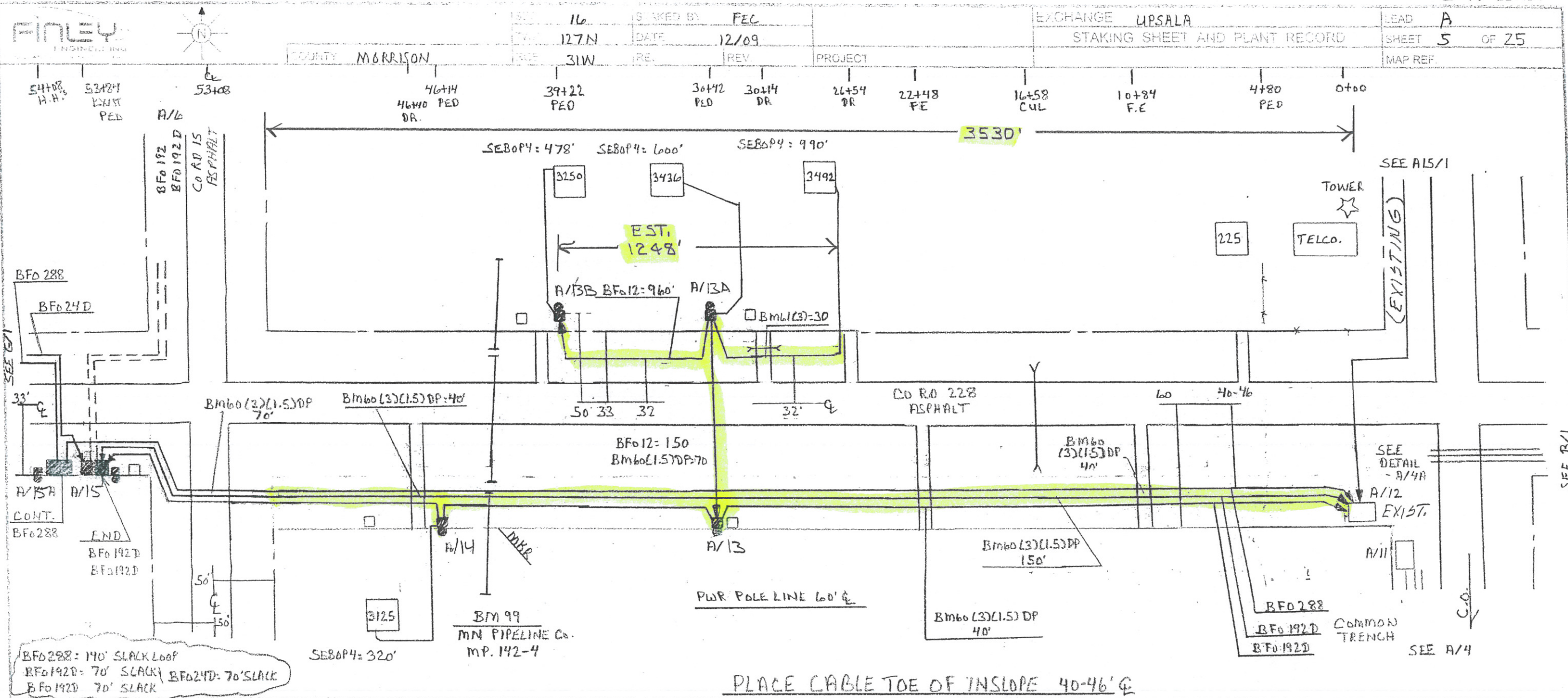


DATE	REVISION AND PURPOSE	DRAWN BY
4-1-12	PROPOSED 2012 CONSTRUCTION	FRC
3-1-12	AS BUILT	FRC

**PROPOSED LEGEND**

- TYPE OF CABLE (FIBER) AND SIZE
- FIBER
- FIBER DROP (4 PAIR)
- DUCT
- FIBER PED
- FACILITY CHANGE
- FIBER HANDHOLE
- FIBER MANHOLE





BFO 288 = 140' SLACK LOOP  
 BFO 192D = 70' SLACK  
 BFO 24D = 70' SLACK  
 BFO 192D = 70' SLACK

PLACE CABLE TOE OF INSLOPE 40-46' @

POL OR STAF	POL		MISC.										SPLICE				CABLE				MISC. NOTES
	SD 3A(Loc)	BA 23	BTD 6A	BDB 1DA	BHF (30x60x36)T	BM2 5/8x8	BM 53	BM60 (1.5)DP	BM60 (3x1.5)DP	BM61 (3)	BM 99	HBFO (192)(3)	Ho 1	BFO 12	BFO 192D	BFO 192D	BFO 288	BM 83	SEBOP 4	H/D (FO)	
(A/12)																					
A/13									40				6		3180	3112	3112				
									150												
									40												
A/13A								70					2	150							
										30								1	990	1	3492
																		1	600	1	3436
A/13B													1	960							
																		1	478	1	3250
	3	2	1																		
													9	1110	3180	3112	3112				3 2068 3

SEE SHT #54 FOR REMAINS TAG.