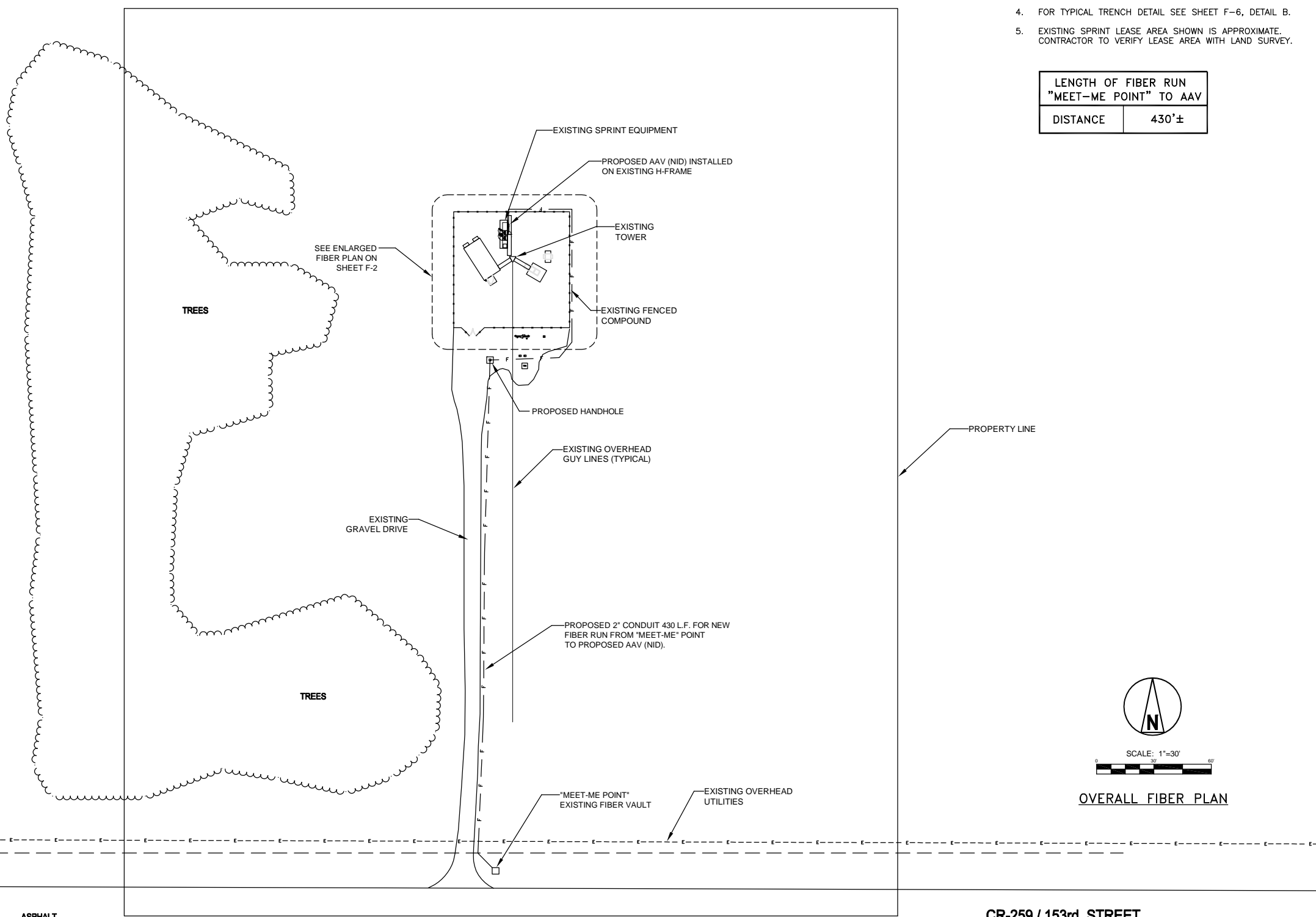


DIRT RACE TRACK

NOTES

1. PROPERTY LINES SHOWN ARE APPROXIMATE AND DONE WITHOUT THE BENEFIT OF A SITE SURVEY.
2. CONDUIT ROUTING IS DIAGRAMMATICALLY SHOWN ON PLANS AND ARE ONLY APPROXIMATIONS. THE EXACT LOCATION AND ROUTING SHALL BE FIELD VERIFIED.
3. UTILITY AND ACCESS EASEMENTS SHOWN ARE APPROXIMATE LOCATION. CONTRACTOR TO VERIFY EXACT LOCATION.
4. FOR TYPICAL TRENCH DETAIL SEE SHEET F-6, DETAIL B.
5. EXISTING SPRINT LEASE AREA SHOWN IS APPROXIMATE. CONTRACTOR TO VERIFY LEASE AREA WITH LAND SURVEY.

LENGTH OF FIBER RUN "MEET-ME POINT" TO AAV	
DISTANCE	430'±



SCALE: 1"=30'

OVERALL FIBER PLAN

6580 SPRINT PARKWAY
OVERLAND PARK, KANSAS 66251

CONTACT: JAMIE ABBY (616) 745-4777
49357 PONTIAC TRAIL, WIXOM, MI 48393

PROJECT NO:	1233414
DRAWN BY:	TCM
CHECKED BY:	MTM

REV	DATE	DESCRIPTION
A	09/19/12	AW CD 90s

LANDTECH
Professional Surveying & Engineering

CONTACT: MATTHEW MOKANYK, PE
(231) 943-0050 mattm@landtechps.com
1275 McGregor Way, Grawn, MI 49637

I hereby certify that the plan, specification, or report was prepared by me or under my direct supervision and that I am a duly Licensed Professional Engineer under the laws of the State of Minnesota.

Printed Name: Matthew T. Mokanyk, PE
Signature: *Matthew T. Mokanyk*
Date: 09/20/12 License # 44736

IT IS A VIOLATION OF LAW FOR ANY PERSON, UNLESS THEY ARE ACTING UNDER THE DIRECTION OF A LICENSED PROFESSIONAL ENGINEER, TO ALTER THIS DOCUMENT.

MS03NP126
LITTLE FALLS MN 1
15812 153rd STREET
LITTLE FALLS, MN 56345

SHEET TITLE
OVERALL FIBER PLAN

SHEET NUMBER
F-1