

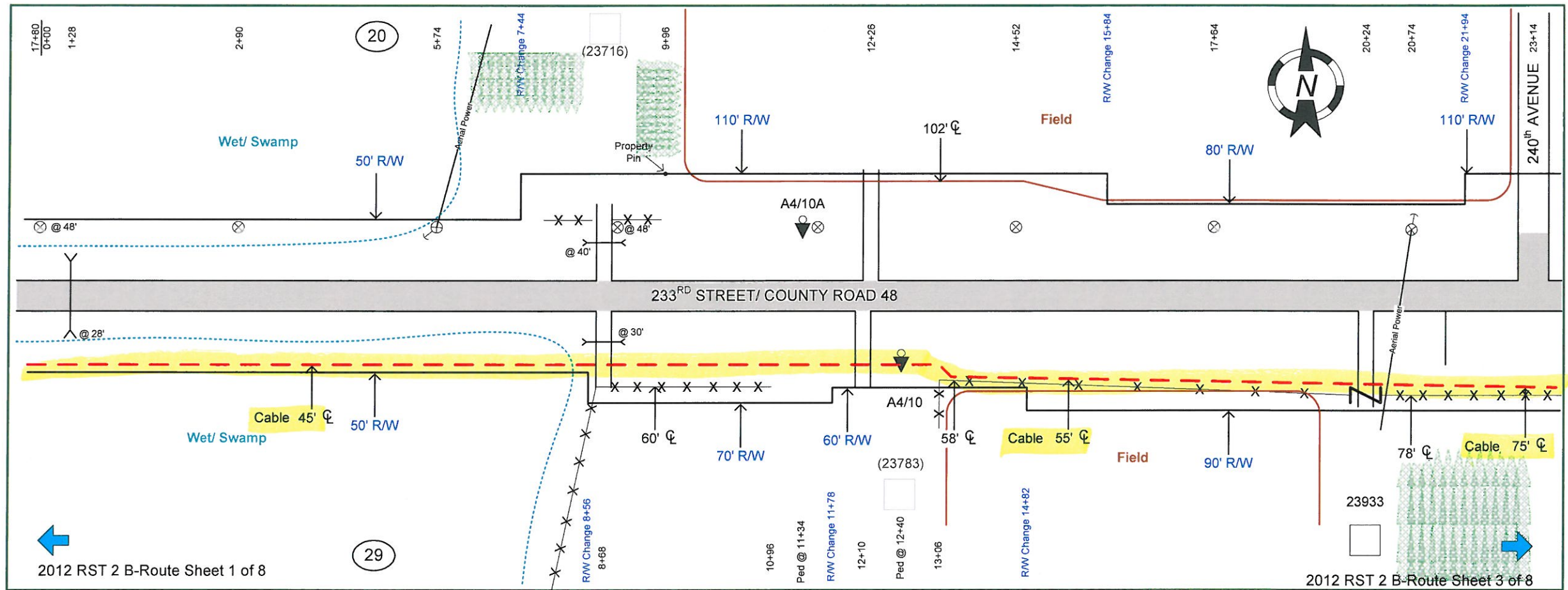
30 29 2012 RST 2 B-Route Sheet 2 of 8

From	To	PType	Units	Feet	Remarks

**As Staked**  
**Consolidated Telephone Company**

Name: 2012 RST 2 B-Route Sheet 1 of 8  
 WO: 2012 - Freedhem  
 Exch: Freedhem  
 Route: B  
 ROW: Varies  
 State: Minnesota  
 County: Morrison  
 Range: 30W  
 Twsp: 42N Section: 30 & 29  
 Township: Platte

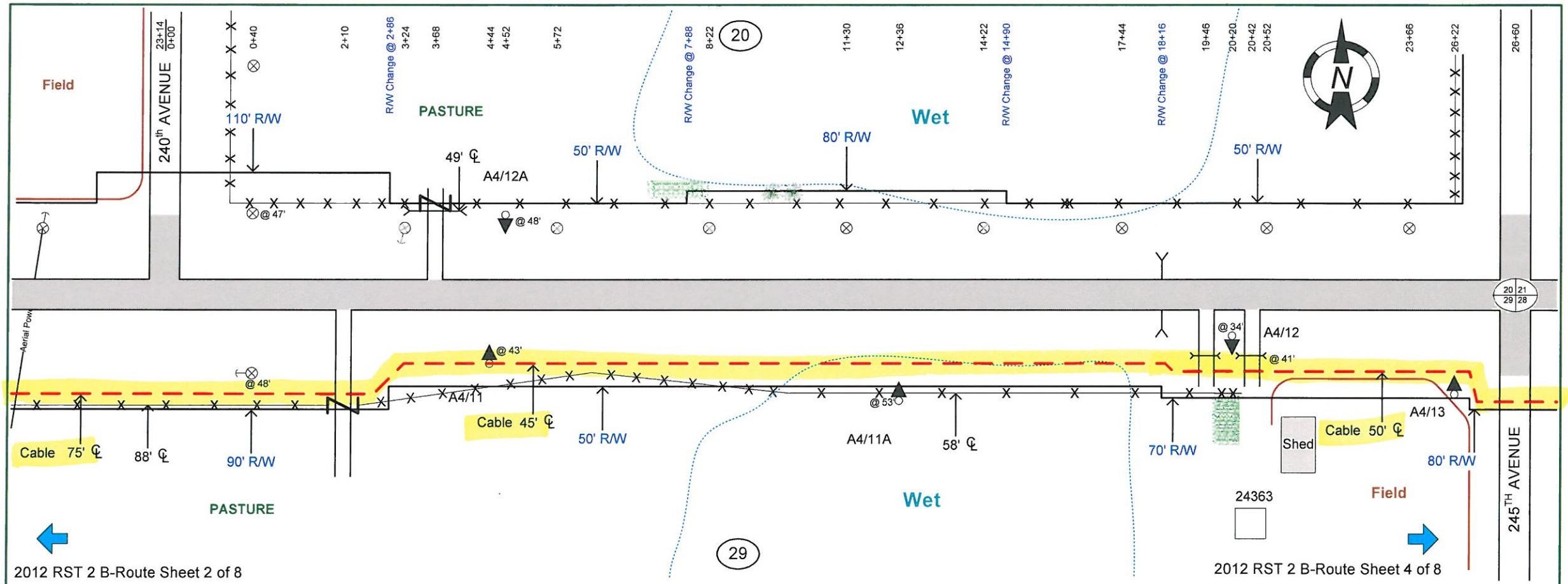
Staked By: EMD Date: 11-13-12  
 Revised By: \_\_\_\_\_ Date: \_\_\_\_\_  
 Revised By: \_\_\_\_\_ Date: \_\_\_\_\_  
 Revised By: \_\_\_\_\_ Date: \_\_\_\_\_  
 As-Built By: \_\_\_\_\_ Date: \_\_\_\_\_



From	To	PType	Units	Feet	Remarks

**As Staked**  
**Consolidated Telephone Company**  
 Name: 2012 RST 2 B-Route Sheet 2 of 8  
 WO: 2012 - Freedhem  
 Exch: Freedhem  
 Route: B  
 ROW: Varies  
 State: Minnesota  
 County: Morrison  
 Range: 30W  
 Twp: 42N Section: 29  
 Township: Platte

Staked By: EMD Date: 11-13-12  
 Revised By: \_\_\_\_\_ Date: \_\_\_\_\_  
 Revised By: \_\_\_\_\_ Date: \_\_\_\_\_  
 Revised By: \_\_\_\_\_ Date: \_\_\_\_\_  
 As-Built By: \_\_\_\_\_ Date: \_\_\_\_\_



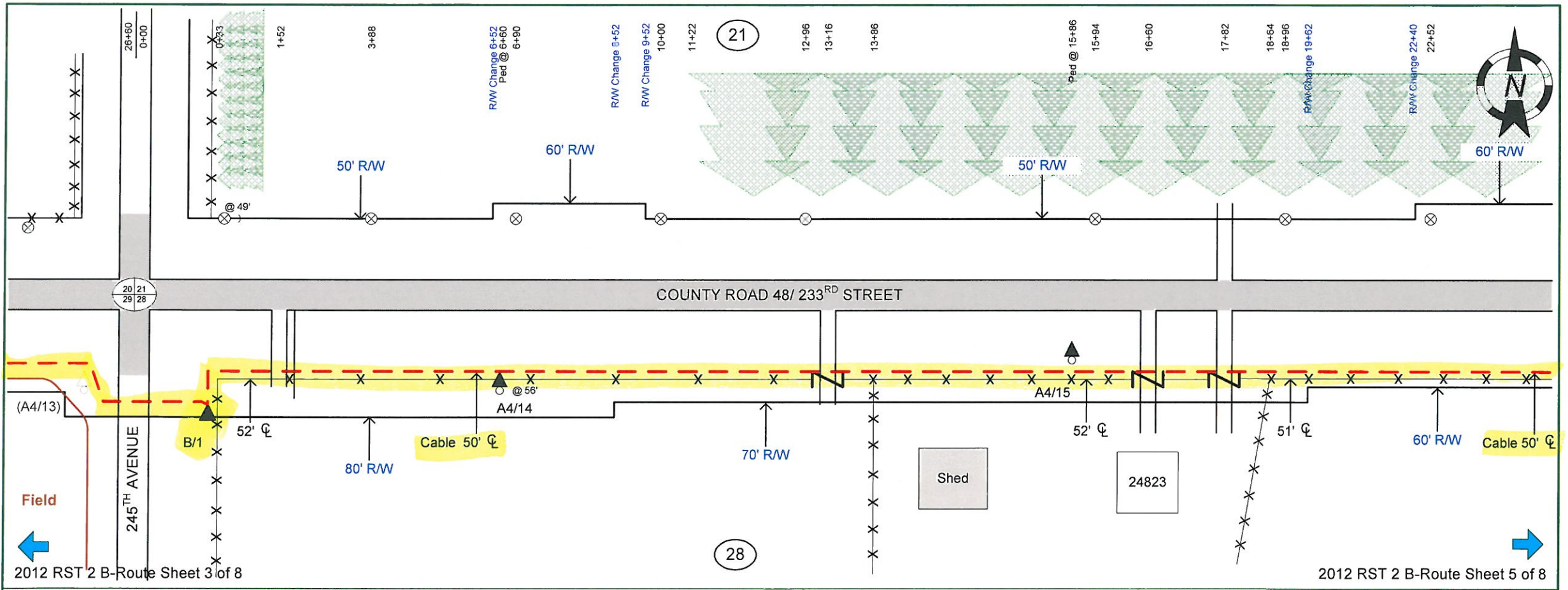
2012 RST 2 B-Route Sheet 2 of 8

2012 RST 2 B-Route Sheet 4 of 8

From	To	PType	Units	Feet	Remarks

**As Staked**  
**Consolidated Telephone Company**  
 Name: 2012 RST 2 B-Route Sheet 3 of 8  
 WO: 2012 - Freedhem  
 Exch: Freedhem  
 Route: B  
 ROW: Varies  
 State: Minnesota  
 County: Morrison  
 Range: 30W  
 Twp: 42N Section: 29 & 28  
 Township: Platte

Staked By: EMD Date: 11-13-12  
 Revised By: \_\_\_\_\_ Date: \_\_\_\_\_  
 Revised By: \_\_\_\_\_ Date: \_\_\_\_\_  
 Revised By: \_\_\_\_\_ Date: \_\_\_\_\_  
 As-Built By: \_\_\_\_\_ Date: \_\_\_\_\_

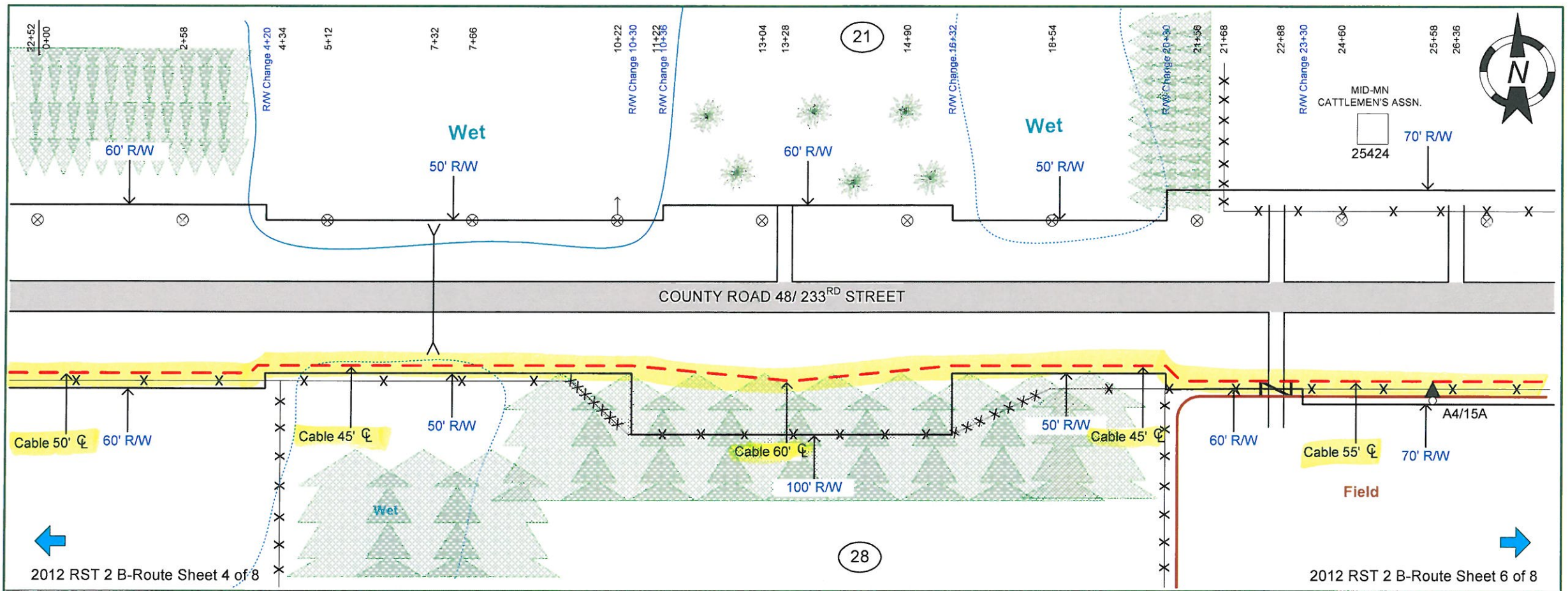


2012 RST 2 B-Route Sheet 3 of 8

2012 RST 2 B-Route Sheet 5 of 8

From	To	PType	Units	Feet	BM	Remarks
(A4/CO-48SAI)	B/1	BDO5(SGC)	BFO 48	55555	2(5/8)(8) 1	Loop
	B/1				53 1	
	B/1				60(1)(1.25) 120	

**CTC** **As Staked**  
**Consolidated Telephone Company**  
 Name: 2012 RST 2 B-Route Sheet 4 of 8  
 WO: 2012 - Freedhem  
 Exch: Freedhem  
 Route: B  
 ROW: Varies  
 State: Minnesota  
 County: Morrison  
 Range: 30W  
 Twsp: 42N Section: 29 & 28  
 Township: Platte  
 Staked By: EMD Date: 11-13-12  
 Revised By: \_\_\_\_\_ Date: \_\_\_\_\_  
 Revised By: \_\_\_\_\_ Date: \_\_\_\_\_  
 Revised By: \_\_\_\_\_ Date: \_\_\_\_\_  
 As-Built By: \_\_\_\_\_ Date: \_\_\_\_\_



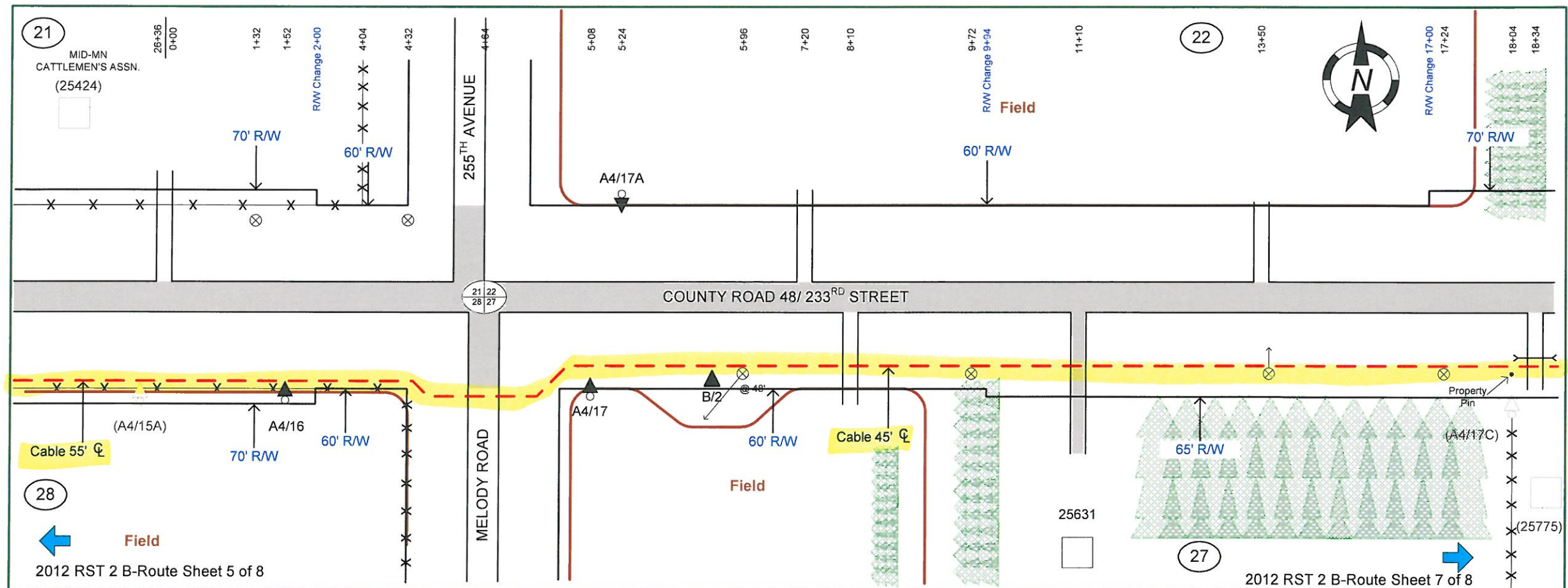
2012 RST 2 B-Route Sheet 4 of 8

2012 RST 2 B-Route Sheet 6 of 8

From	To	PType	Units	Feet	Remarks

**As Staked**  
**Consolidated Telephone Company**  
 Name: 2012 RST 2 B-Route Sheet 5 of 8  
 WO: 2012 - Freedhem  
 Exch: Freedhem  
 Route: B  
 ROW: Varies  
 State: Minnesota  
 County: Morrison  
 Range: 30W  
 Twp: 42N Section: 28  
 Township: Platte

Staked By: EMD Date: 11-13-12  
 Revised By: \_\_\_\_\_ Date: \_\_\_\_\_  
 Revised By: \_\_\_\_\_ Date: \_\_\_\_\_  
 Revised By: \_\_\_\_\_ Date: \_\_\_\_\_  
 As-Built By: \_\_\_\_\_ Date: \_\_\_\_\_



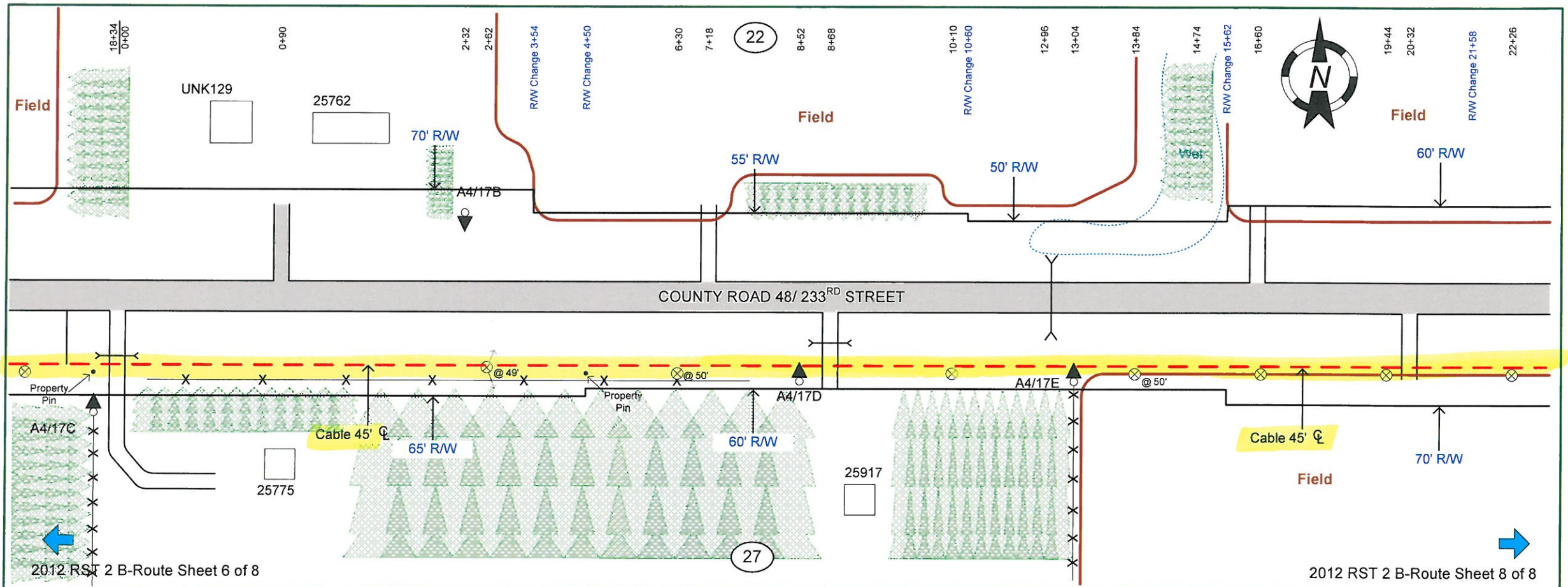
28  
 ← Field  
 2012 RST 2 B-Route Sheet 5 of 8

2012 RST 2 B-Route Sheet 7 of 8 →

From	To	PType	Units	Feet	BM	Remarks
(B/1)	B/2	BDO5(SGC)	BFO 48	66666	2(5/8)(8) 1	Loop
	B/2				53 1	

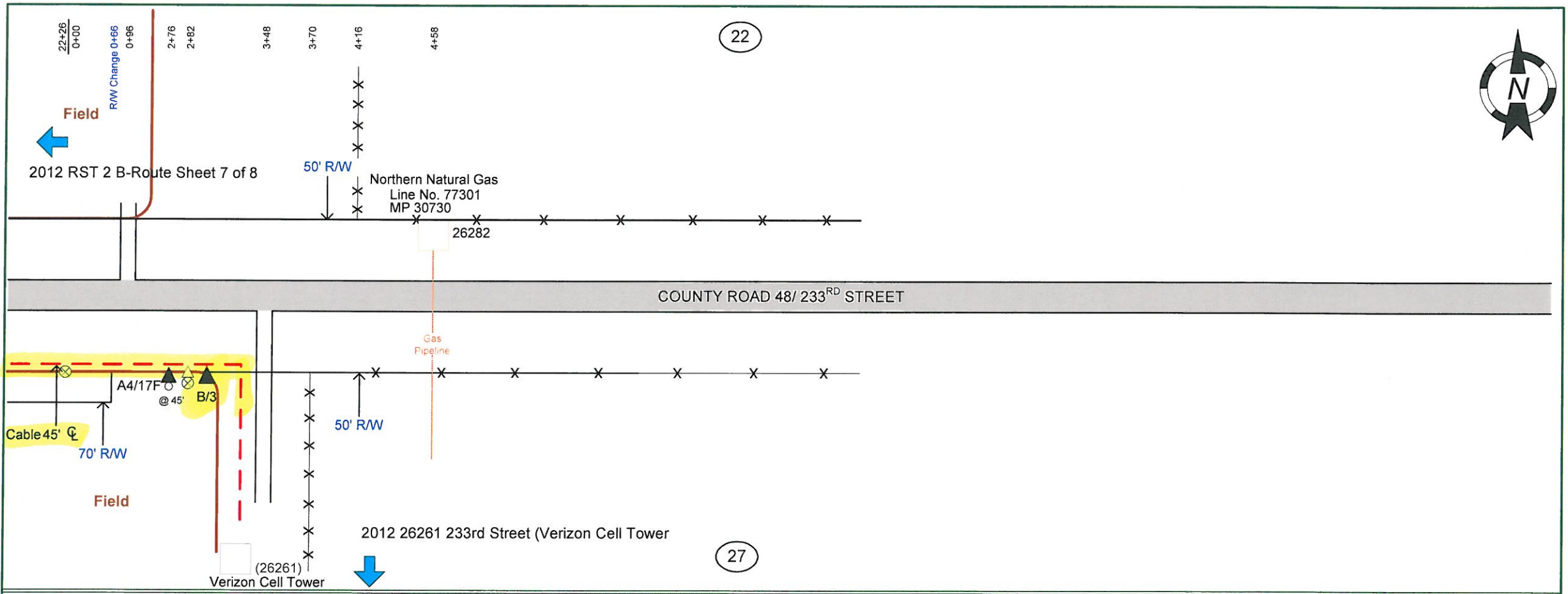
**As Staked**  
**Consolidated Telephone Company**  
 Name: 2012 RST 2 B-Route Sheet 6 of 8  
 WO: 2012 - Freedhem  
 Exch: Freedhem  
 Route: B  
 ROW: Varies  
 State: Minnesota  
 County: Morrison  
 Range: 30W  
 Twsp: 42N Section: 28 & 27  
 Township: Platte

Staked By: EMD Date: 11-13-12  
 Revised By: \_\_\_\_\_ Date: \_\_\_\_\_  
 Revised By: \_\_\_\_\_ Date: \_\_\_\_\_  
 Revised By: \_\_\_\_\_ Date: \_\_\_\_\_  
 As-Built By: \_\_\_\_\_ Date: \_\_\_\_\_



From	To	PType	Units	Feet	Remarks

<b>As Staked</b>	
<b>Consolidated Telephone Company</b>	
Name:	2012 RST 2 B-Route Sheet 7 of 8
WO:	2012 - Freedhem
Exch:	Freedhem
Route:	B
ROW:	Varies
State:	Minnesota
County:	Morrison
Range:	30W
Twsp:	42N Section: 27
Township:	Platte
Staked By:	EMD Date: 11-13-12
Revised By:	Date: _____
Revised By:	Date: _____
Revised By:	Date: _____
As-Built By:	Date: _____



From	To	PType	Units	Feet	BM	Remarks
(B/2)	B/3	BDO5(SGC)	BFO 48	7777	2(5/8)(8) 1	
	B/3				53 1	

**As Staked**  
**Consolidated Telephone Company**  
 Name: 2012 RST 2 B-Route Sheet 8 of 8  
 WO: 2012 - Freedhem  
 Exch: Freedhem  
 Route: B  
 ROW: Varies  
 State: Minnesota  
 County: Morrison  
 Range: 30W  
 Twsp: 42N Section: 27  
 Township: Platte

Staked By: EMD Date: 11-13-12  
 Revised By: \_\_\_\_\_ Date: \_\_\_\_\_  
 Revised By: \_\_\_\_\_ Date: \_\_\_\_\_  
 Revised By: \_\_\_\_\_ Date: \_\_\_\_\_  
 As-Built By: \_\_\_\_\_ Date: \_\_\_\_\_