

STR #8 TO STR #15
SW, 0.528 OPGW, -40 DEG F INITIAL, 4500# DT, 376' RS
COND, 785 ACSR 267, 212 DEG F FINAL, 7500# DT, 375' RS

STR #15 TO STR #16
SW, 0.528 OPGW, -40 DEG F INITIAL, 300# DT, 62' RS
COND, 785 ACSR 267, 212 DEG F FINAL, 300# DT, 63' RS

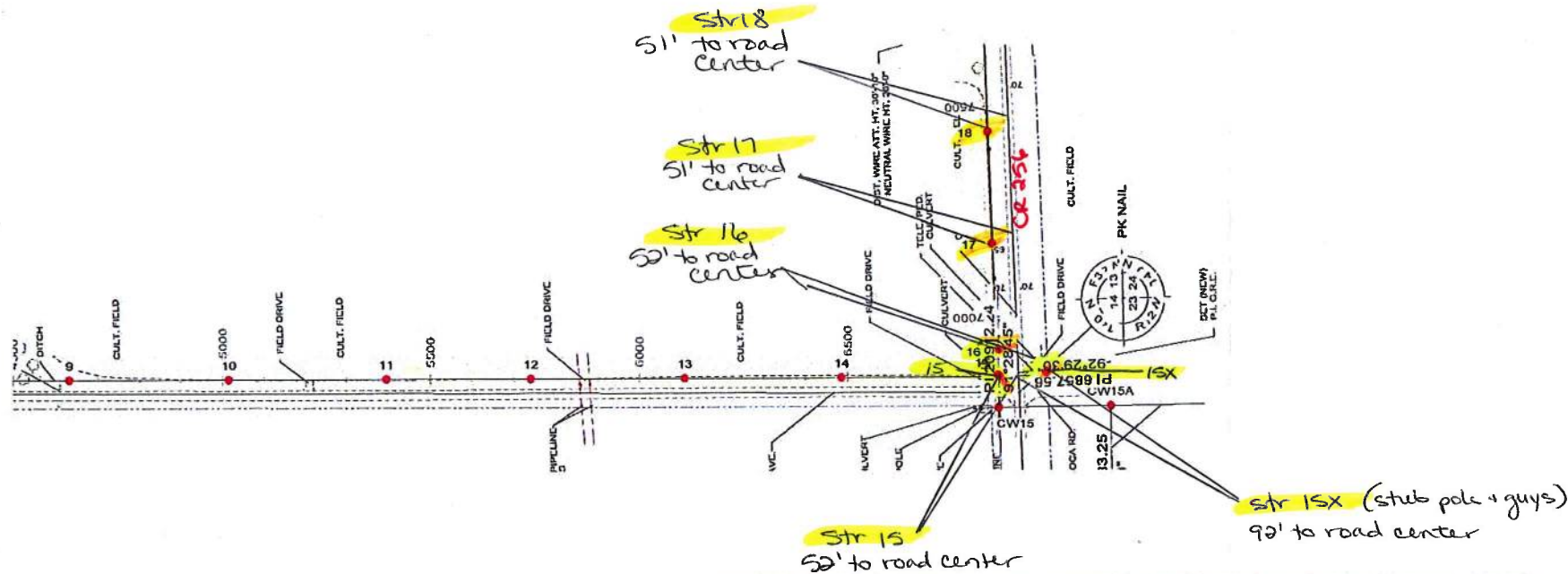
STR #16 TO STR #47
SW, 0.528 OPGW, -40 DEG F INITIAL, 4000# DT, 262' RS
COND, 785 ACSR 287, 212 DEG F FINAL, 7500# DT, 262' RS

DISTRIBUTION UNDERBUILD
STR #CW15 TO RISER STR #37
3PH & NEUT, 10 ACSR, 120 DEG F FINAL, 2058# DT, 254' RS
SEE STAKING SHEETS FOR INDIVIDUAL TAP TENSIONS/RULING SPANS.

APPROVED FOR CONSTRUCTION
PROJECT NO. 75881 ISSUE NO. 1

I HEREBY CERTIFY THAT THIS PLAN, SPECIFICATION, OR REPORT WAS PREPARED BY ME OR UNDER MY DIRECT SUPERVISION AND THAT I AM A DULY LICENSED PROFESSIONAL ENGINEER UNDER THE LAWS OF THE STATE OF MINNESOTA.

Kerby M. Nester
KERBY M. NESTER DWG. REV. 1
DATE: 11-2-2012 REG. NO. 49593

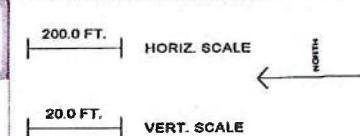


NOTE: REFER TO THE STRUCTURE LIST FOR DETAILED DESIGN INFORMATION.

APPROVALS	DATE	DESIGN DATA
DRAWN BY: MS	6/2012	CONDUCTOR: 785 ACSR 267 DESIGN TENSION: SEE STAKINGSHEET RULING SPAN: SEE STAKINGSHEET
DESIGN BY: KMN	9/2012	SHIELD WIRE: 0.528 OPGW DESIGN TENSION: SEE STAKINGSHEET RULING SPAN: SEE STAKINGSHEET
CHECKED BY: RSJ	11/2012	
APPROVED BY: KMN	11/2012	

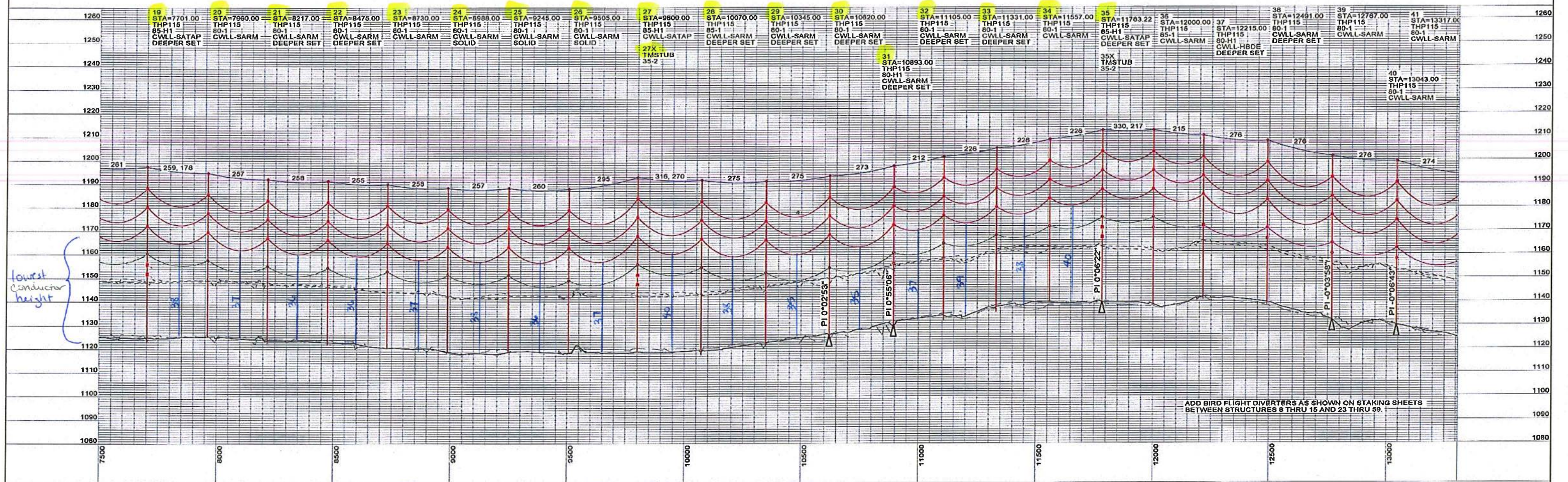
GREAT RIVER ENERGY

CW-LL LINE
115 KV TRANSMISSION LINE



DWG. NO.
CWLL-91D
REVISION: 0
SHEET 2 OF 5

REVISIONS



ADD BIRD FLIGHT DIVERTERS AS SHOWN ON STAKING SHEETS BETWEEN STRUCTURES 8 THRU 15 AND 23 THRU 59.

STR #16 TO STR #47
SW, 0.528 OPGW, -40 DEG F INITIAL, 4000# DT, 262' RS
COND, 795 ACSR 26/7, 212 DEG F FINAL, 7600# DT, 282' RS

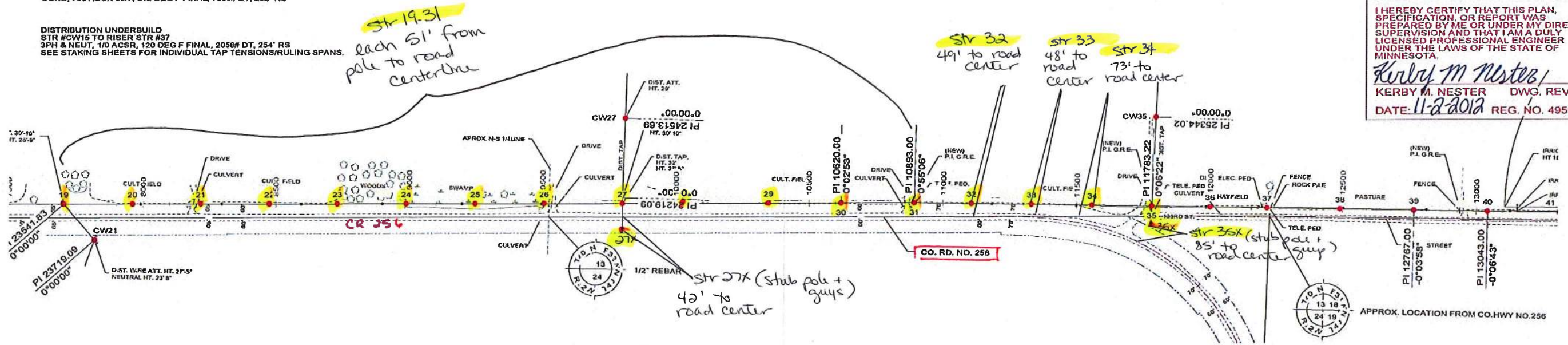
DISTRIBUTION UNDERBUILD
STR #CW15 TO RISER STR #37
3PH & NEUT, 1/0 ACSR, 120 DEG F FINAL, 2056# DT, 254' RS
SEE STAKING SHEETS FOR INDIVIDUAL TAP TENSIONS/RULING SPANS.

DISTRIBUTION UNDERBUILD
RISER STR #37 TO STR #47Y
3PH & NEUT, 4/0 ACSR 6/1, 120 DEG F FINAL, 3171# DT, 272' RS

APPROVED FOR CONSTRUCTION
PROJECT NO. 75881 ISSUE NO. 1

I HEREBY CERTIFY THAT THIS PLAN, SPECIFICATION, OR REPORT WAS PREPARED BY ME OR UNDER MY DIRECT SUPERVISION AND THAT I AM A DULY LICENSED PROFESSIONAL ENGINEER UNDER THE LAWS OF THE STATE OF MINNESOTA.

Kerby M Nester
KERBY M. NESTER DWG. REV. 1
DATE: 11-2-2012 REG. NO. 49593

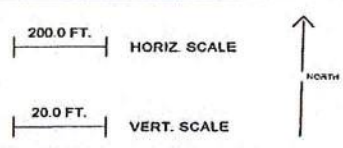


NOTE: REFER TO THE STRUCTURE LIST FOR DETAILED DESIGN INFORMATION.

APPROVALS	DATE	DESIGN DATA
DRAWN BY: MS	6/2012	CONDUCTOR: 795 ACSR 26/7 DESIGN TENSION: SEE STAKINGSHEET RULING SPAN: SEE STAKINGSHEET
DESIGN BY: KMN	9/2012	SHIELD WIRE: 0.528 OPGW DESIGN TENSION: SEE STAKINGSHEET RULING SPAN: SEE STAKINGSHEET
CHECKED BY: RSJ	11/2012	
APPROVED BY: KMN	11/2012	

GREAT RIVER ENERGY

CW-LL LINE
115 KV TRANSMISSION LINE



DWG. NO.
CWLL-91D
REVISION: 0
SHEET 3 OF 5

REVISIONS