

CR 220

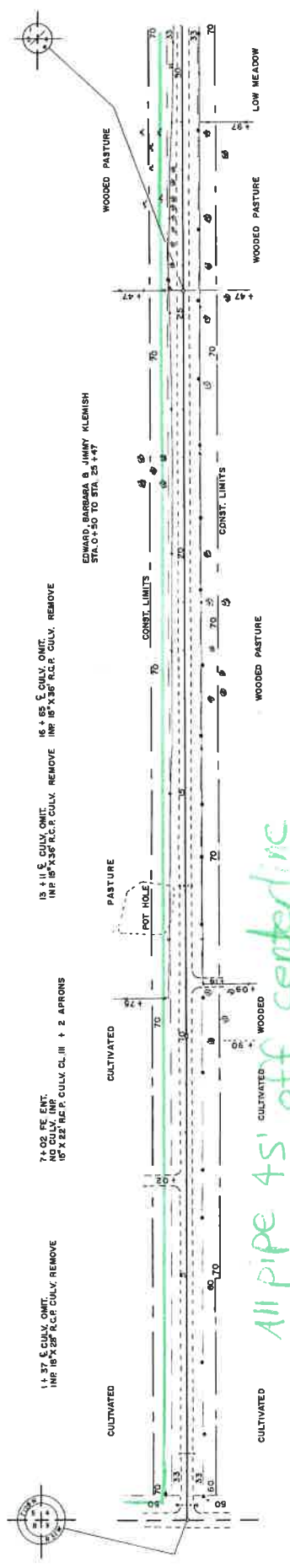
BASIC WIDTH OF RIGHT OF WAY IS 66 FT.  
ALL RIGHT OF WAY OUTSIDE OF 66 FT.  
IS COVERED BY SUPPLEMENT.

81.28 +472  
Δ 1° 0' 12" LT.



PL 0+00

PL 10+00



1+37 E CULV. OMIT.  
IMP 18" X 28" R.C.P. CULV. REMOVE

7+02 FE ENT.  
NO CULV. IMP.  
IMP 18" X 28" R.C.P. CULV. REMOVE

13+11 E CULV. OMIT.  
IMP 18" X 36" R.C.P. CULV. REMOVE

0+35 E CULV.  
IMP 18" X 28" R.C.P. CULV. REMOVE

11+14 FE ENT.  
NO CULV. IMP.  
IMP 18" X 28" R.C.P. CULV. REMOVE

ARTHUR & LETHA BLISE  
STA 0+20 TO STA 11+09

BUTY DANH & EDWARD, BARBARA & JIMMY KLEMISH  
STA 11+09 TO STA 30+09

LT.  
RT.

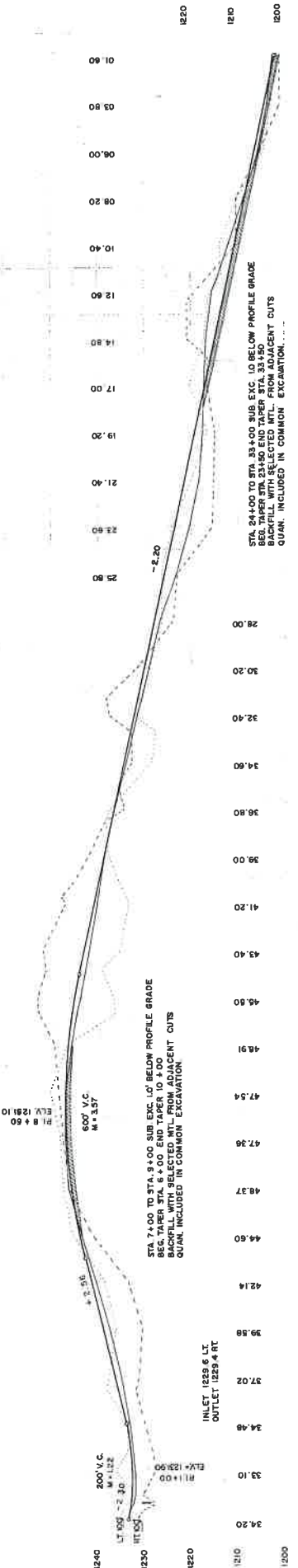
B.M. ELY + 1230.96  
RIP 304 IN 8' CLM CLUSTER  
RT. 100 STA 2+7.26

ICL BR 0.05 AC  
ICL BR 0.05 AC

CL B GR 0.20 AC  
CL B GR 0.20 AC

CL B GR 0.30 AC  
CLOJAC 8 (R) 0.20 AC

B.M. ELY + 1206.31  
RIP 304 IN 8' CLM CLUSTER  
RT. 100 STA 28+9.2



3.5' DT. 6 RT.

Station	Elevation	Notes
0+00	+18.23	
0+10	+18.23	
0+20	+18.23	
0+30	+18.23	
0+40	+18.23	
0+50	+18.23	
0+60	+18.23	
0+70	+18.23	
0+80	+18.23	
0+90	+18.23	
1+00	+18.23	
1+10	+18.23	
1+20	+18.23	
1+30	+18.23	
1+40	+18.23	
1+50	+18.23	
1+60	+18.23	
1+70	+18.23	
1+80	+18.23	
1+90	+18.23	
2+00	+18.23	
2+10	+18.23	
2+20	+18.23	
2+30	+18.23	
2+40	+18.23	
2+50	+18.23	
2+60	+18.23	
2+70	+18.23	
2+80	+18.23	
2+90	+18.23	
3+00	+18.23	
3+10	+18.23	
3+20	+18.23	
3+30	+18.23	
3+40	+18.23	
3+50	+18.23	
3+60	+18.23	
3+70	+18.23	
3+80	+18.23	
3+90	+18.23	
4+00	+18.23	
4+10	+18.23	
4+20	+18.23	
4+30	+18.23	
4+40	+18.23	
4+50	+18.23	
4+60	+18.23	
4+70	+18.23	
4+80	+18.23	
4+90	+18.23	
5+00	+18.23	
5+10	+18.23	
5+20	+18.23	
5+30	+18.23	
5+40	+18.23	
5+50	+18.23	
5+60	+18.23	
5+70	+18.23	
5+80	+18.23	
5+90	+18.23	
6+00	+18.23	
6+10	+18.23	
6+20	+18.23	
6+30	+18.23	
6+40	+18.23	
6+50	+18.23	
6+60	+18.23	
6+70	+18.23	
6+80	+18.23	
6+90	+18.23	
7+00	+18.23	
7+10	+18.23	
7+20	+18.23	
7+30	+18.23	
7+40	+18.23	
7+50	+18.23	
7+60	+18.23	
7+70	+18.23	
7+80	+18.23	
7+90	+18.23	
8+00	+18.23	
8+10	+18.23	
8+20	+18.23	
8+30	+18.23	
8+40	+18.23	
8+50	+18.23	
8+60	+18.23	
8+70	+18.23	
8+80	+18.23	
8+90	+18.23	
9+00	+18.23	
9+10	+18.23	
9+20	+18.23	
9+30	+18.23	
9+40	+18.23	
9+50	+18.23	
9+60	+18.23	
9+70	+18.23	
9+80	+18.23	
9+90	+18.23	
10+00	+18.23	
10+10	+18.23	
10+20	+18.23	
10+30	+18.23	
10+40	+18.23	
10+50	+18.23	
10+60	+18.23	
10+70	+18.23	
10+80	+18.23	
10+90	+18.23	
11+00	+18.23	
11+10	+18.23	
11+20	+18.23	
11+30	+18.23	
11+40	+18.23	
11+50	+18.23	
11+60	+18.23	
11+70	+18.23	
11+80	+18.23	
11+90	+18.23	
12+00	+18.23	

EXC. 3010  
EMB. 2235

EXC. 9260  
EMB. 6708

CO. RD. - 220

73 - 220

SHEET 3 OF 37 SHEETS

BASIC WIDTH OF RIGHT OF WAY IS 66 FT.  
ALL RIGHT OF WAY OUTSIDE OF 66 FT.  
IS COVERED BY SLOPE EASEMENT.

HERBERT S. ANNICE BESEMAN  
STA. 34+75 TO 50+70

34+20 P.M. ENT.  
IMP. 12" X 20" R.C.P. CULV. REMOVE  
15' X 32' R.C.P. CULV. CL. III + 2 APRONS

45+00 P.M. ENT.  
IMP. 12" X 20" R.C.P. REMOVE  
15' X 26' R.C.P. CULV. CL. III + 2 APRONS

WALTER B. ESTHER MILLER  
STA. 58+70 TO 60+70

PI. 46+76.3  
Δ = 4° 22' LT.  
L = 218.4  
T = 218.4  
L = 436.7  
S = 41  
R = 5729.85

PI. 46+16.3  
Δ = 4° 22' LT.

62+65.7 TWP RD.  
NO CULV. IMP.  
15' X 32' R.C.P. CULV. CL. III + 2 APRONS

62+89.7 TWP RD.  
NO CULV. IMP.  
15' X 32' R.C.P. CULV. CL. III + 2 APRONS

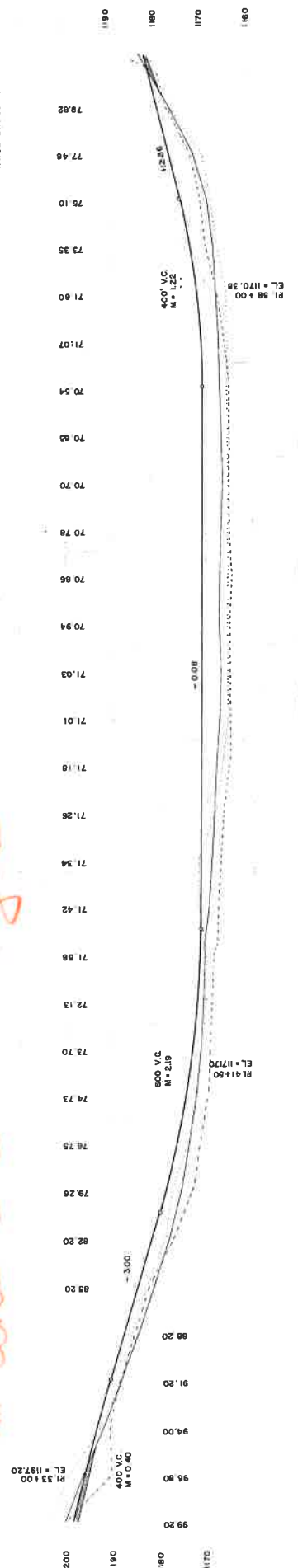


*All pipe is 4" HDPE except 2" crossing under road*

*All pipe is 15' off center line*

*All bores 3' under ditch grade*

8.M. EL = 1184.61  
S.M. EL = 1184.61  
RT. 82' STA. 63+00



3' 5" DITCH RT.

Station	Excavation (Exc.)	Embankment (Emb.)
34+00	10.385	10.889
35		
36		
37		
38		
39		
40		
41		
42		
43		
44		
45		
46		
47		
48		
49		
50		
51		
52		
53		
54		
55		
56		
57		
58		
59		
60		
61		
62		
63		
64		
65		
66		
67		
68		
69		
70		
71		
72		
73		
74		
75		
76		
77		
78		
79		
80		
81		
82		
83		
84		
85		
86		
87		
88		
89		
90		
91		
92		
93		
94		
95		
96		
97		
98		
99		
100		

POT. 85 + 28.9  
 POT. 85 + 82.3  
 POT. 85 + 56.5  
 E. OF RAIL ROAD TRACK

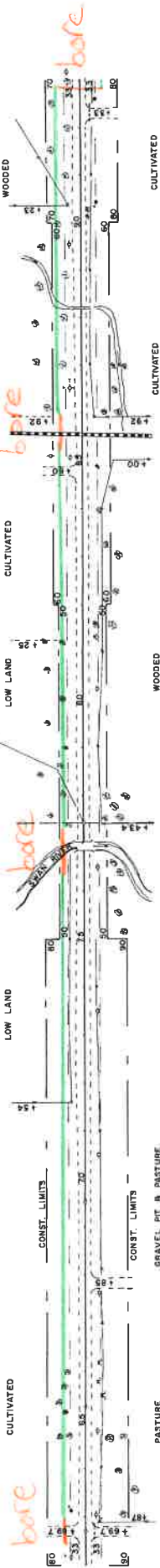
81 + 77 + 43.4  
 & 77 + 37.8 RT.



76 + 95.4 E. OF BOX CULV.  
 INP. 26' X 33.6 TRIPLE BOX  
 DO NOT DISTURB

84 + 80 FE. ENT.  
 NO CULV. OR  
 NONE REQ'D

88 + 16 E. OF BOX CULV.  
 NO CULV. OR  
 NONE REQ'D



67 + 85 GRAVEL RT. ENT.  
 NONE REQ'D

92 + 33 FE. ENT.  
 INP. 12' X 33" MET. & R.C.P. REMOVE  
 IP. X.32 R.C.P. CULV. CL. II + 2 APRONS

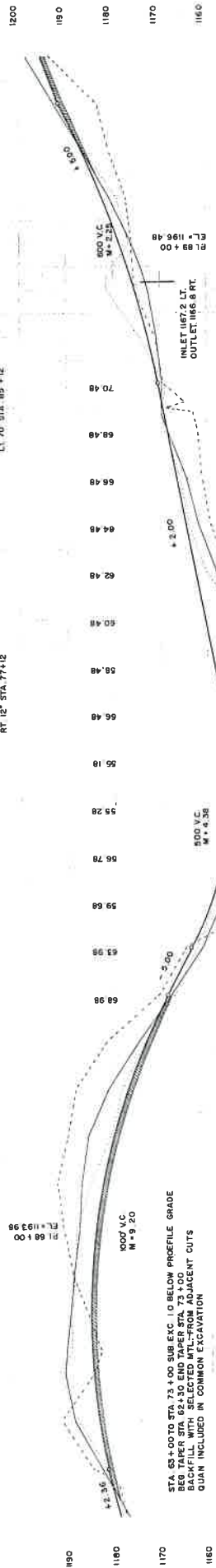
ROY L. & ELEANOR K. OSWALD  
 STA. 77 + 43.4 TO STA. 103 + 90.2

ROY L. & ELEANOR K. OSWALD  
 STA. 77 + 43.4 TO STA. 103 + 90.2

LT. CL & GR 0.10 AC  
 RT. CL & GR 0.10 AC

CL & GR 1.85 AC  
 CL & GR 0.15 AC  
 CL & GR 0.15 AC

*All pipe 45' off centerline*  
*All bores 3' under ditch grade*



STA. 63 + 00 TO STA. 73 + 00 SUB. EXC. 1.0 BELOW PROFFILE GRADE  
 BEG. TAPER STA. 62 + 30 END TAPER STA. 73 + 00  
 BACKFILL WITH SELECTED MTL-FROM ADJACENT CUTS  
 QUANT. INCLUDED IN COMMON EXCAVATION

INLET 1167.2 LT.  
 OUTLET 1166.8 RT.

3' DT. LIMIT

EMC 12.374  
 EMB 9.307

PL 103 + 202  
B + 0' 80 RT.

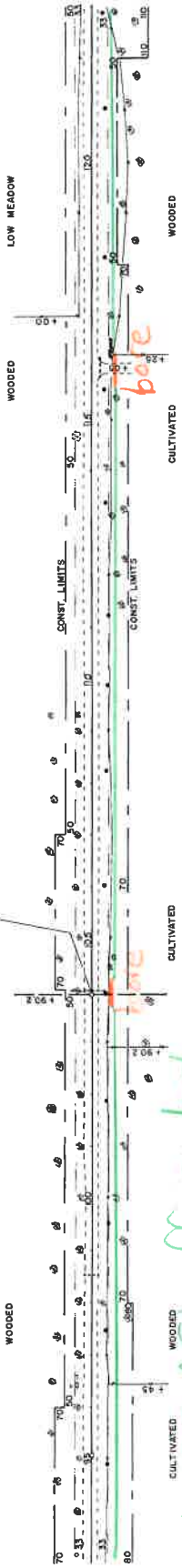
POT. 95 + 071

104 + 00 E. CULV. MOVE TO STA. 105 + 00  
IMP. 24" X 28" MET.  
24" R.C.P. CULV. CL. + 2 APRONS

98 + 54 E. CULV. OMIT.  
IMP. 18" X 28" R.C.P. CULV. REMOVE

WARREN W. & SUEPFA, SAN  
STA. 90 + 23 TO STA. 117 + 00

ROY R. & EILEEN JOHANNES  
STA. 117 + 00 TO STA. 150 + 24.2



*All pipe 45' off centerline*  
*All bores 3' below ditch grade*

ANDREW P. & CAROLYN K. SPINALE & ELISA RUSAM  
STA. 103 + 98.2 TO STA. 150 + 24.2

115 + 08 6" 5" INT.  
IMP. 24" X 28" MET.  
24" X 28" R.C.P. CULV. CL. 11 + 2 APRONS



B.M. EL. = 1198.89  
SPK. IN. OF ELM.  
RT. BT. STA. 103 + 90

STA. 91 + 00 TO STA. 97 + 00 SUB. EXC. 1.0' BELOW PROFILE GRADE  
BEG. TAPER STA. 90 + 50 END TAPER STA. 97 + 30  
BACKFILL WITH SELECTED MTL. FROM ADJACENT CUTS  
QUAN. INCLUDED IN COMMON EXCAVATION.

EL. 123 + 00  
EL. 1202.84  
M = 2.24

EL. 1192.0 RT.  
OUTLET 1197.0 LT.  
PI 105 + 00  
PI 100 + 48  
M = 0.36

EL. 1205.48  
EL. 1205.00  
M = 4.20

EL. 1202.84  
M = 2.24

EL. 123 + 00  
EL. 1202.84  
M = 2.24

POT. 127 + 39.40  
 RL 130 + 24.2  
 Δ = 0' 02' 30" LT.

POT. 140 + 41.2

ARNOLD B. CLARA ERLING B. RUDOLPH B. CLARA SWAKE  
 STA 130 + 24.2 TO STA. 143 + 44

VERDELL B. LIDA MAY PEPPER  
 STA 143 + 44 TO STA. 157 + 05

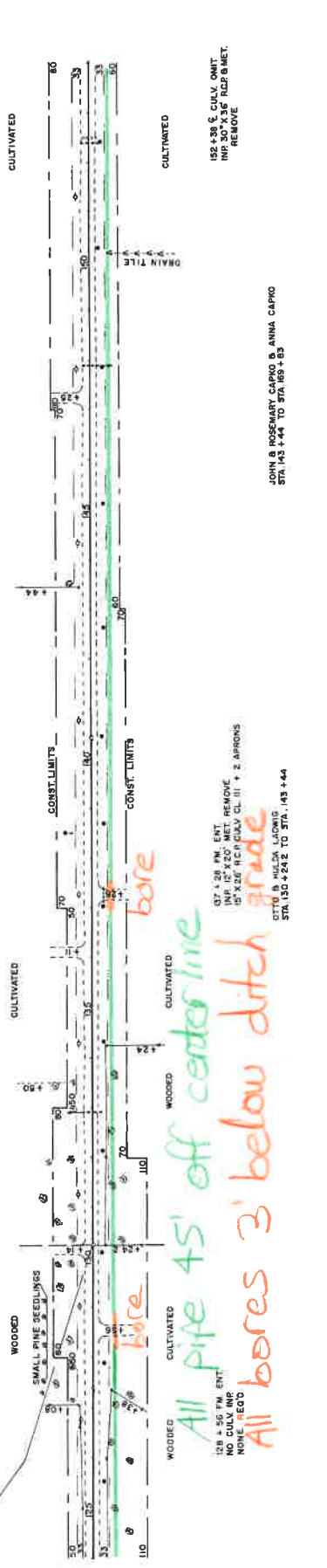
130 + 14 F.M. ENT.  
 NO CULV. IMP  
 NONE REQD.

132 + 9.4 E. CULV.  
 IMP 60' X 48' CP CULV. REMOVE  
 60' X 48' RCF. CULV. CL. II + 2 APRONS

136 + 11 F.M. ENT.  
 NO CULV. IMP  
 15' X 28' RCF. CULV. CL. + 2 APRONS

147 + 25 F.E. ENT.  
 IMP 60' X 48' CP CULV. REMOVE  
 65' SPAN X 48' RCF. CULV. CL. II + 2 APRONS

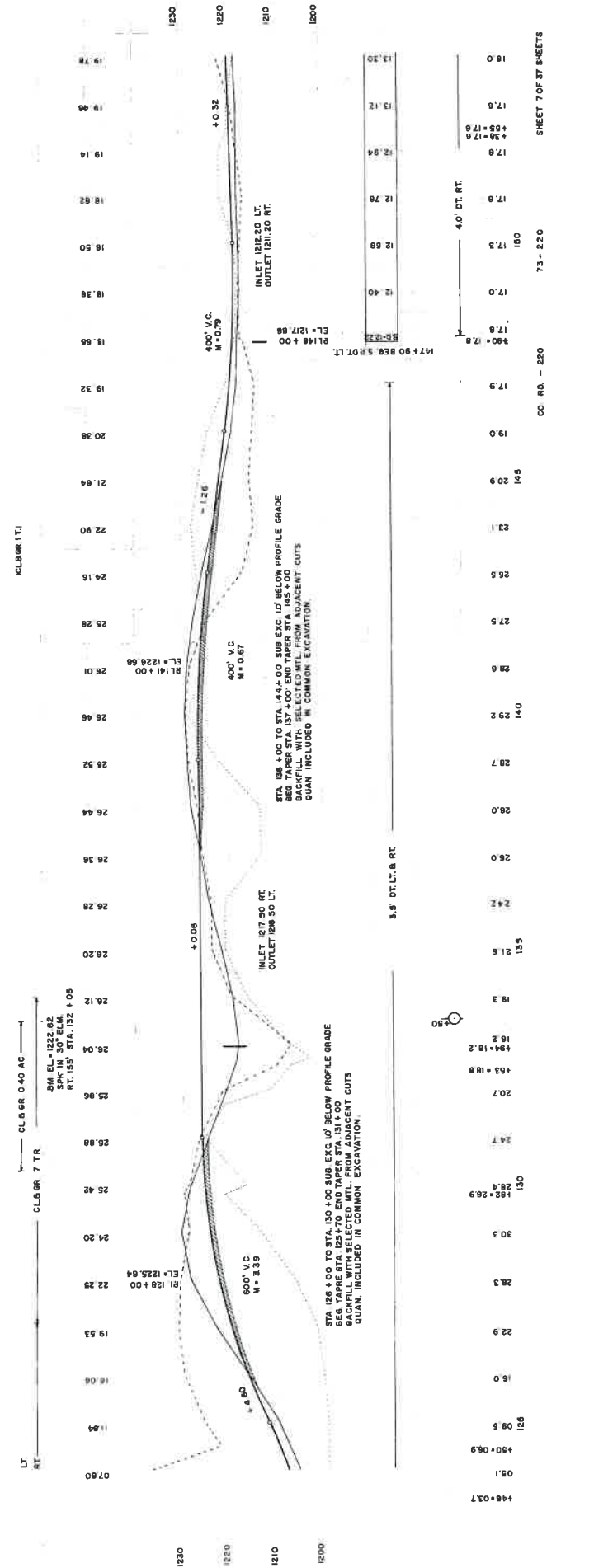
147 + 30 E. CULV.  
 IMP 60' X 48' CP CULV. REMOVE  
 65' SPAN X 48' RCF. CULV. CL. II + 2 APRONS.  
 152 + 95 E. CULV. ENT.  
 IMP 60' X 48' CP CULV. REMOVE  
 65' SPAN X 48' RCF. CULV. REMOVE



*All pipe 45' off centerline*  
*All bores 3' below ditch grade*  
*bare*

JOHN B. ROSEMARY CARRO B. ANNA CARRO  
 STA 143 + 44 TO STA 159 + 03

OTTIE M. WILSON LOWMEYER  
 STA 143 + 44 TO STA. 143 + 44



*All pipe 45' off centerline*  
*All bores 3' below ditch grade*  
*bare*

JOHN B. ROSEMARY CARRO B. ANNA CARRO  
 STA 143 + 44 TO STA 159 + 03

OTTIE M. WILSON LOWMEYER  
 STA 143 + 44 TO STA. 143 + 44

SHEET 7 OF 37 SHEETS

CO. RD. - 220

73 - 220

BASIC WIDTH OF RIGHT OF WAY IS 66 FT.  
ALL RIGHT OF WAY OUTSIDE OF 66 FT.  
IS COVERED BY SLOPE EMBANKMENT.

PI 156 + 61.5  
2 - 10' 4.5 30' LT.

POST 168 + 400.0 B.S.  
NORTHERN NATURAL GASLINE

POST 182 + 99.5

156 + 63 TWP RD.  
IMP 48" X 36" MET. + APRON REMOVE  
80' SPAN X 40' X 22' ARCH CULV. CL.III + 2 APRONS

167 + 77 E. CULV. OMIT.  
IMP 18" X 36" MET. REMOVE

OTTO'S CLASS. TRAMWAY  
STA. 189 + 483 TO STA. 208 + 02

*2" HDPE going west including bore under CR 220*

*bore*

*bore under CR 220*

*CULTIVATED*

*CULTIVATED*

156 + 63 TWP RD.  
IMP 48" X 36" MET. + APRON REMOVE  
24" X 32' 60'S CULV. CL.III + 2 APRONS

111.5 E. PM ENT.  
NO CULV. IMP  
15' X 20' R.C.P. CULV. CL.III + 2 APRONS

115.1 S. C. CULV.  
IMP 18" X 36" MET. REMOVE  
24" X 36' R.C.P. CULV. CL.III + 2 APRONS

*CULTIVATED*

*CULTIVATED*

*All pipe 45' off center line  
bore 3' under ditch grade  
4" HDPE going south and east*

LESLIE & MARYANNE CIGNON & HERBERT A & INEZ BERGSTROM  
STA. 169 + 63 TO STA. 182 + 99.5

LT.

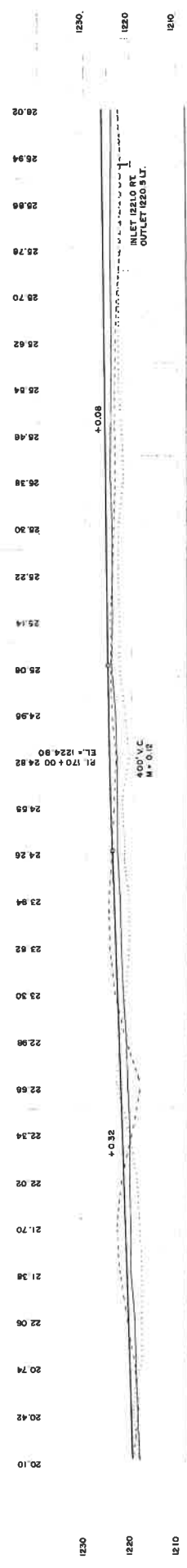
B.M. EL. = 1232.50  
SPK IN PP  
RT 243 STA. 156 + 65

CL 8 BR. 4 TR

400' V.C.  
M = 0.12

EL. = 1224.80  
PI 170 + 00 24.82

EL. = 1225.22  
SPK IN 18" ELEM.  
RT 243 STA. 156 + 70



4.0' DT. RT.

EL. = 1224.80  
PI 170 + 00 24.82

400' V.C.  
M = 0.12

CL 8 BR. 4 TR

EL. = 1225.22  
SPK IN 18" ELEM.  
RT 243 STA. 156 + 70

EL. = 1224.80  
PI 170 + 00 24.82

EL. = 1232.50  
SPK IN PP  
RT 243 STA. 156 + 65

STATION	GROUND ELEVATION	PROPOSED PIPE ELEVATION
1200	13.48	13.48
1201	13.84	13.84
1202	14.02	14.02
1203	14.20	14.20
1204	14.38	14.38
1205	14.56	14.56
1206	14.74	14.74
1207	14.92	14.92
1208	15.10	15.10
1209	15.28	15.28
1210	15.46	15.46
1211	15.64	15.64
1212	15.82	15.82
1213	16.00	16.00
1214	16.18	16.18
1215	16.36	16.36
1216	16.54	16.54
1217	16.72	16.72
1218	16.90	16.90
1219	17.08	17.08
1220	17.26	17.26
1221	17.44	17.44
1222	17.62	17.62
1223	17.80	17.80
1224	17.98	17.98
1225	18.16	18.16
1226	18.34	18.34
1227	18.52	18.52
1228	18.70	18.70
1229	18.88	18.88
1230	19.06	19.06

CO. RD. - 220 73 - 220 SHEET 8 OF 37 SHEETS